

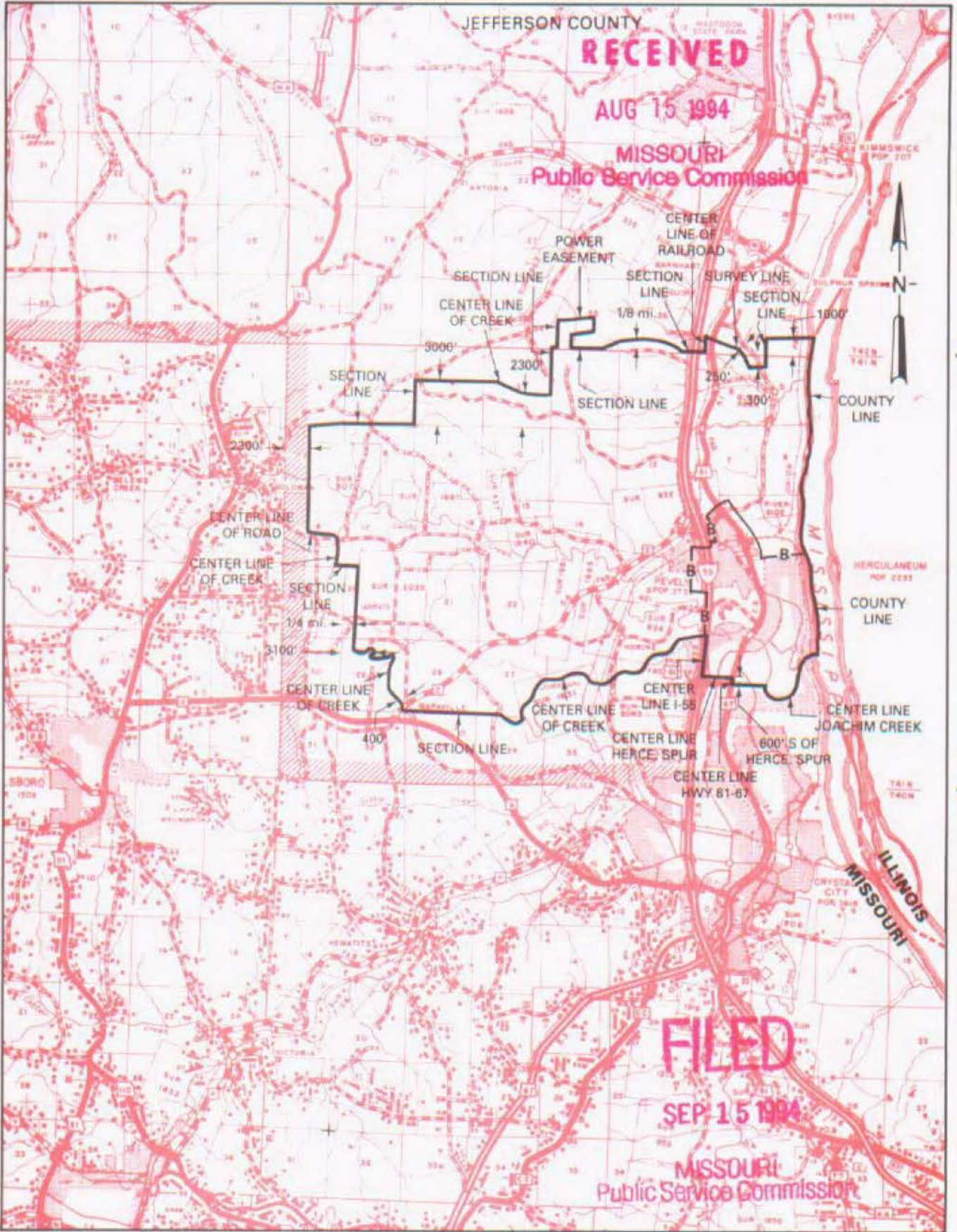
NO SUPPLEMENT TO THIS TARIFF WILL BE ISSUED EXCEPT FOR THE PURPOSE OF CANCELING THIS TARIFF.

Herculaneum-Pevely, Missouri

P. S. C. Mo. No. 17

6th REVISED SHEET 3
REPLACING 5th REVISED SHEET 3

EXCHANGE AREA MAP



Cancelled
December 17, 2008
Missouri Public
Service Commission
JI-2009-0374

R4E | R5E

R5E | R6E

By M. H. SCHULTEIS, Executive Director - External Affairs
Southwestern Bell Telephone Company
St. Louis, Missouri

Issued: August 15, 1994

Effective: September 15, 1994

NO SUPPLEMENT TO THIS TARIFF WILL BE ISSUED EXCEPT FOR THE PURPOSE OF CANCELING THIS TARIFF.

P. S. C. Mo. No. 17
EXCHANGE AREA MAP

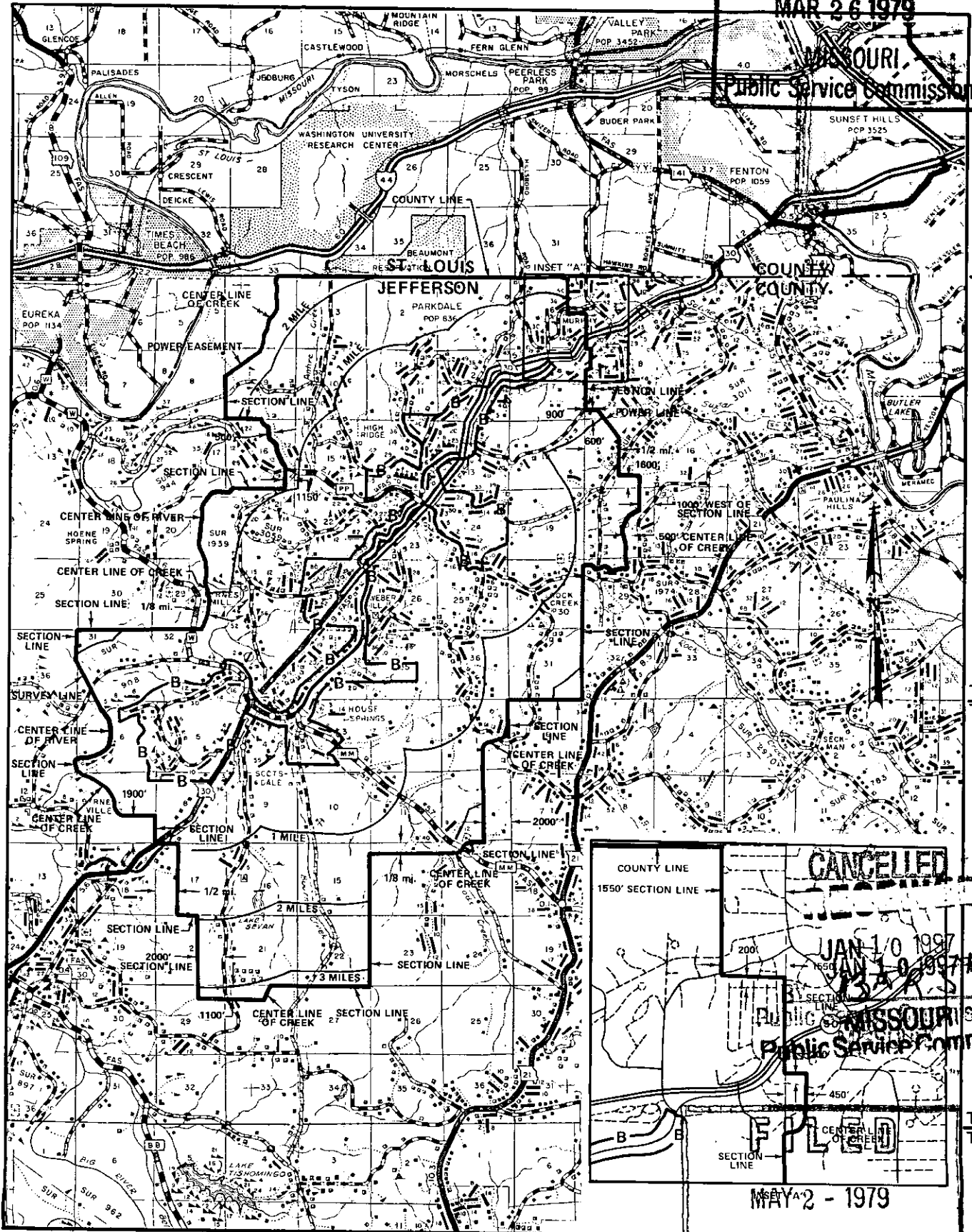
REPLACING THE REVISED SHEET 3

High Ridge Missouri

RECEIVED

MAR 26 1979

MISSOURI
Public Service Commission



T44N
T43N

T43N
T42N

T42N
T41N

R3E|R4E

R4E|R5E

R5E|R6E

By R. R. SHOCKLEY, Vice President, Missouri
Southwestern Bell Telephone Company

St. Louis, Missouri

Public Service Commission

Issued: APRIL 2, 1979

Effective: MAY 2, 1979