

SBC Missouri
Exchange Area Map
Kansas City Metropolitan
East Independence Zone
PSC MO No. 17
5th Revised Sheet 7

Non-Scannable Map

(Viewable in the Data Center
located at:
200 Madison Street, 1st Floor
Jefferson City MO)

SBC Missouri
Exchange Area Map
Kansas City Metropolitan
Kansas City Zone Area
PSC MO No. 17
1st Revised Sheet 10

Non-Scannable Map

(Viewable in the Data Center
located at:
200 Madison Street, 1st Floor
Jefferson City MO)

No supplement to this tariff will be issued except for the purpose of canceling this tariff.

**SOUTHWESTERN BELL TELEPHONE COMPANY
METROPOLITAN EXCHANGE TARIFF**
SUPERSEDING ALL TARIFFS PREVIOUSLY ISSUED

RECEIVED
OCT 14 1968
MISSOURI
Public Service Commission

Note: This sheet is canceled with the introduction of the wide area service plan.

FILED
JAN 11 1969
Public Service Commission

○ Indicates removal of text.

Issued ~~October 14, 1968~~

Effective: January 11, 1969

~~CANCELLED~~
May 1, 2014
Missouri Public
Service Commission
JL-2014-0379

By R. R. SHOCKLEY, Vice President and General Manager
St. Louis, Missouri

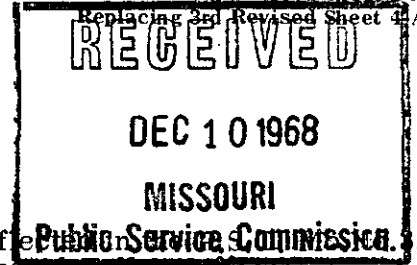
No supplement to this tariff will be issued except for the purpose of canceling this tariff.

P.S.C. Mo.—No.17

KANSAS CITY METROPOLITAN EXCHANGE

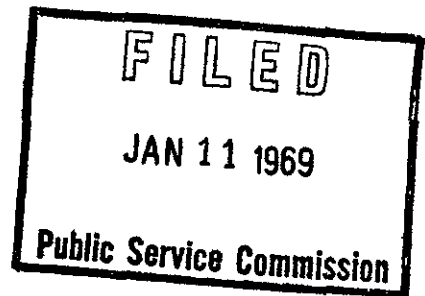
4th Revised Sheet 4-A

Replacing 3rd Revised Sheet 4-A



The information previously contained on this sheet is now reflected in the "Message Toll Telephone Service" section of the General Toll Tariff.

For any rates or practices relating to two-point exception services, refer to the General Toll Tariff.



Issued: December 11, 1968

Effective: January 11, 1969

~~CANCELLED~~

May 1, 2014

Missouri Public

Service Commission

JL-2014-0379

By R. R. SHOCKLEY, Vice President and General Manager
Southwestern Bell Telephone Company
St. Louis, Missouri

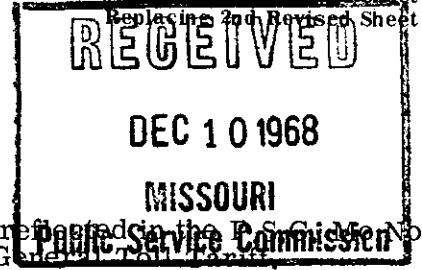
No supplement to this tariff will be issued except for the purpose of canceling this tariff.

P.S.C. Mo.—No.17

KANSAS CITY METROPOLITAN EXCHANGE

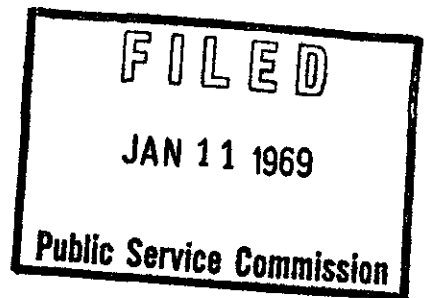
3rd Revised Sheet 4-B

Replacing 2nd Revised Sheet 4-B



The information previously contained on this sheet is now reflected in the P.S.C. Mo. No. 3, of the "Message Toll Telephone Service" section of the General Tariff.

For any rates or practices relating to two-point exception services, refer to the General Toll Tariff.



Issued: December 11, 1968

Effective: January 11, 1969

CANCELLED

May 1, 2014

Missouri Public
Service Commission

JL-2014-0379

By R. R. SHOCKLEY, Vice President and General Manager
Southwestern Bell Telephone Company
St. Louis, Missouri

No supplement to this tariff will be issued except for the purpose of canceling this tariff.

KANSAS CITY METROPOLITAN EXCHANGE

2ND REVISED SHEET 5.
REPLACING 1ST REVISED SHEET 5

SOUTHWESTERN BELL TELEPHONE COMPANY
METROPOLITAN EXCHANGE TARIFF
SUPERSEDING ALL TARIFFS PREVIOUSLY ISSUED

RECEIVED
OCT 14 1968
MISSOURI
Public Service Commission

Note: This sheet is canceled with the introduction of the wide area service plan.

FILED
JAN 11 1969
Public Service Commission

○ Indicates removal of text.

Issued: October 14, 1968

Effective: January 11, 1969

CANCELLED
May 1, 2014
Missouri Public
Service Commission
JL-2014-0379

By R. R. SHOCKLEY, Vice President and General Manager
St. Louis, Missouri

No supplement to this tariff will be issued except for the purpose of cancelling this tariff.

P.S.C. Mo.—No.17

KANSAS CITY METROPOLITAN EXCHANGE

2nd Revised Sheet 5-A

Replacing 1st Revised Sheet 5-A
RECEIVED
DEC 10 1968
MISSOURI
Public Service Commission

The information previously contained on this sheet is now reflected in the P.S.C. Mo. No. 3, of the "Message Toll Telephone Service" section of the General Toll Tariff.

For any rates or practices relating to two-point exception services, refer to the General Toll Tariff.

FILED
JAN 11 1969
Public Service Commission

Issued December 11, 1968

Effective: January 11, 1969

CANCELLED
May 1, 2014 By R. R. SHOCKLEY, Vice President and General Manager
Missouri Public Southwestern Bell Telephone Company
Service Commission St. Louis, Missouri

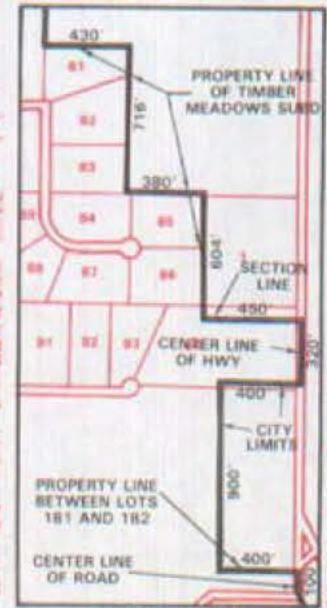
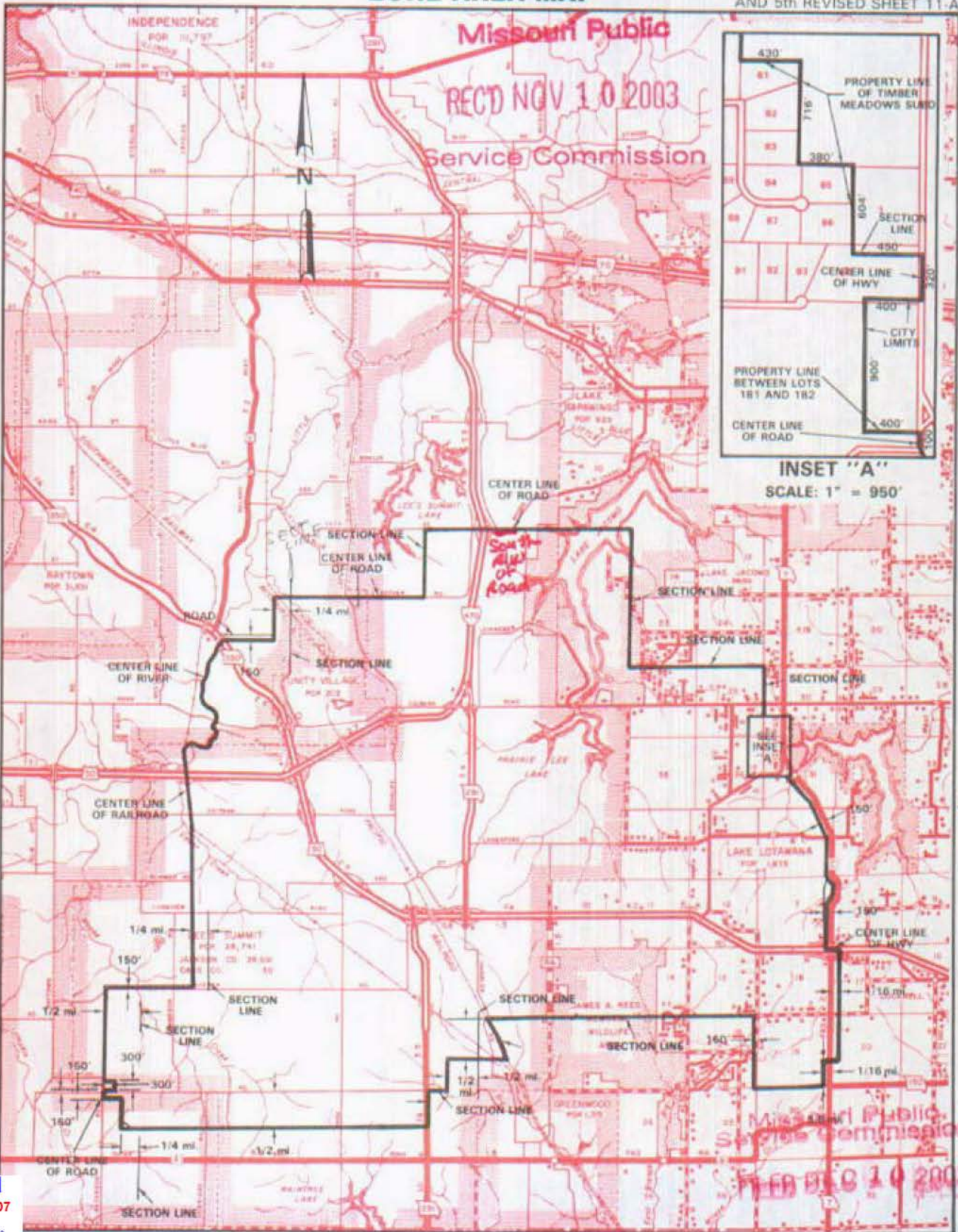
JL-2014-0379

NO SUPPLEMENT TO THIS TARIFF WILL BE ISSUED EXCEPT FOR THE PURPOSE OF CANCELING THIS TARIFF.

Kansas City Metropolitan Exchange
LEE'S SUMMIT ZONE

P. S. C. Mo. No. 17
ZONE AREA MAP

REPLACING 9th REVISED SHEET 11-B
8th REVISED SHEET 11-B
AND 5th REVISED SHEET 11-A



T49N
T48N

T48N
T47N

Cancelled
February 18, 2007

Missouri Public
Service Commission

November 10, 2003

Issued: August 27, 1990

R32W/R31W
By *Cindy Bonbrley*
R. D. BARRON, PRESIDENT, MISSOURI DIVISION
Southwestern Bell Telephone Company, d/b/a SBC Missouri
St. Louis, Missouri

R31W/R30W
Effective: October 22, 1990
December 10, 2003

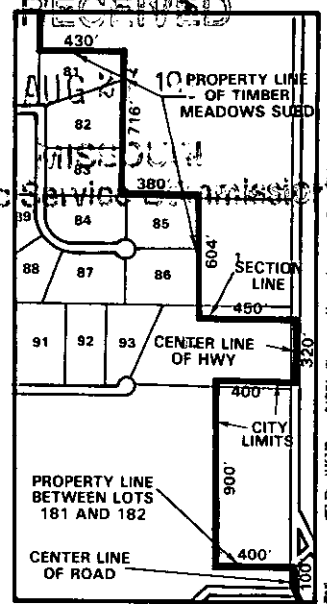
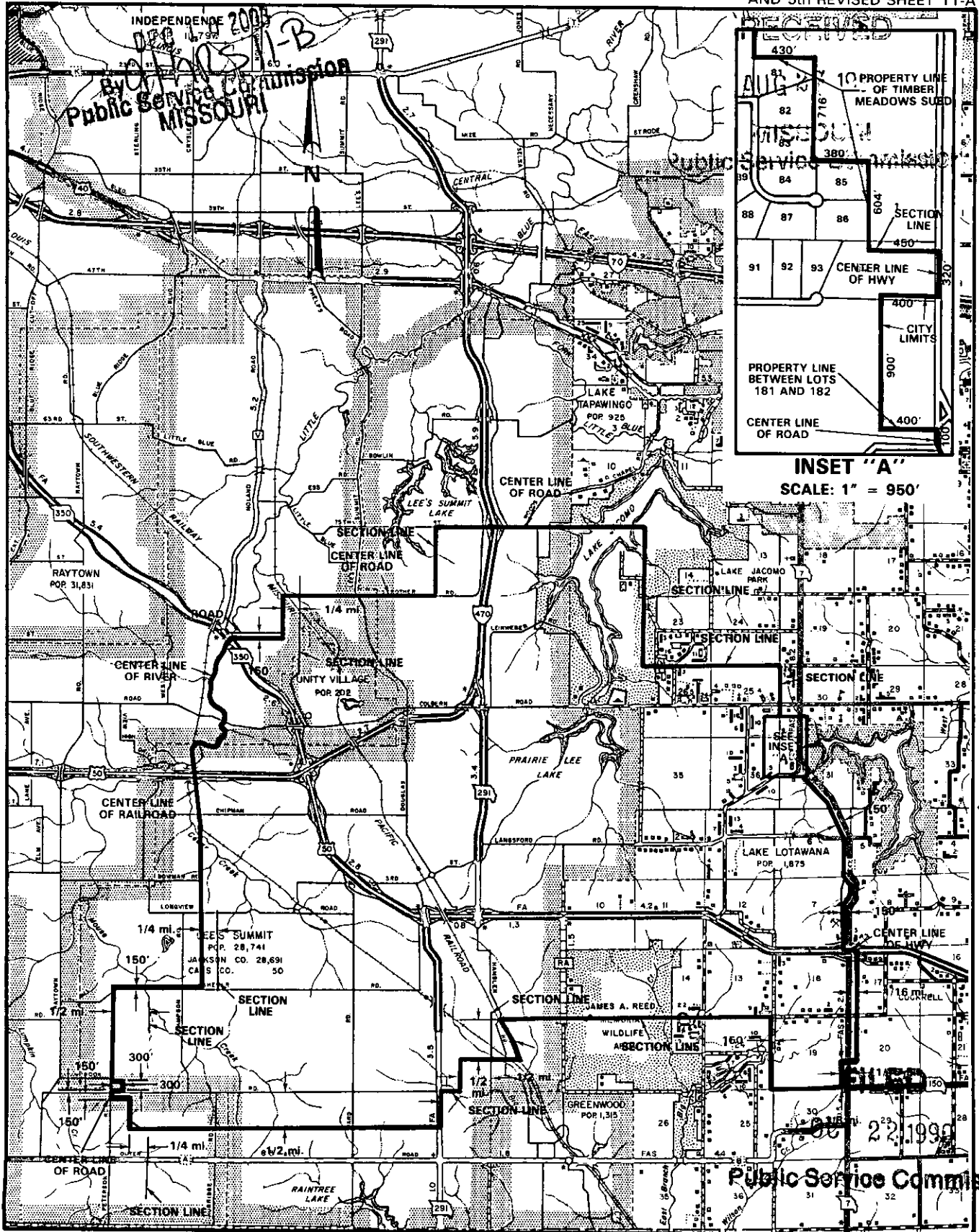
NO SUPPLEMENT TO THIS TARIFF WILL BE ISSUED EXCEPT FOR THE PURPOSE OF CANCELING THIS TARIFF.

CANCELLED

**P. S. C. Mo. No. 17
ZONE AREA MAP**

**Kansas City
Metropolitan Exchange
LEE'S SUMMIT ZONE**

8th REVISED SHEET 11-B
REPLACING 7th REVISED SHEET 11-B
AND 5th REVISED SHEET 11-A



INSET "A"
SCALE: 1" = 950'

T49N
T48N

T48N
T47N

R32W/R31W

R31W/R30W

By R. D. BARRON, PRESIDENT, MISSOURI DIVISION
Southwestern Bell Telephone Company
St. Louis, Missouri

Issued: August 27, 1990

Effective: October 22, 1990

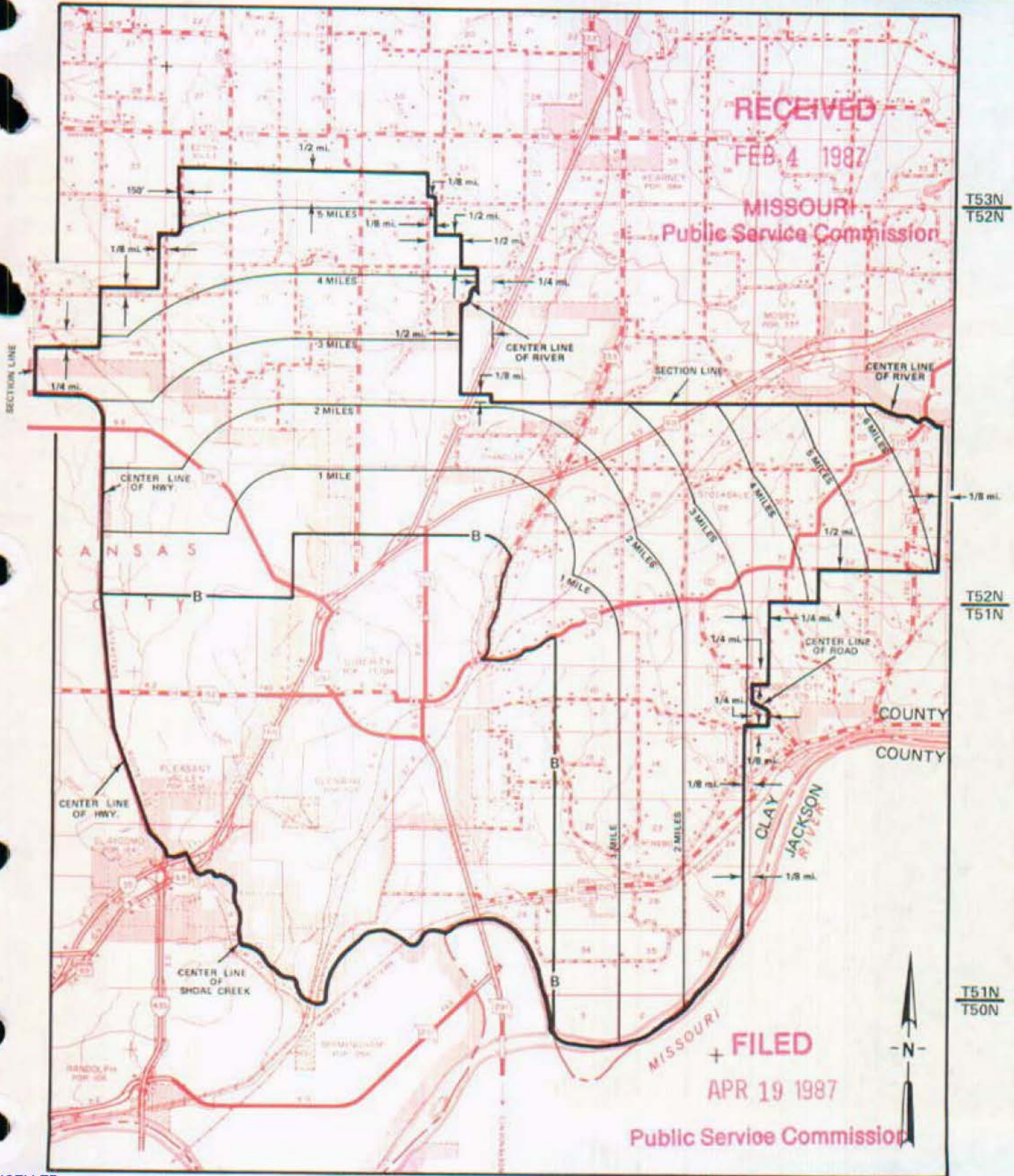
NO SUPPLEMENT TO THIS TARIFF WILL
BE ISSUED EXCEPT FOR THE PURPOSE OF
CANCELING THIS TARIFF.

P. S. C. Mo. No. 17

Kansas City
Metropolitan Exchange
LIBERTY ZONE

EXCHANGE AREA MAP

8th REVISED SHEET 12-B
REPLACING 7th REVISED SHEET 12-B



CANCELLED
Aug. 11, 2007
Missouri Public
Service Commission

Issued: February 6, 1987

R32W/R31W
By R. D. BARRON, President, Missouri Division
Southwestern Bell Telephone Company
St. Louis, Missouri

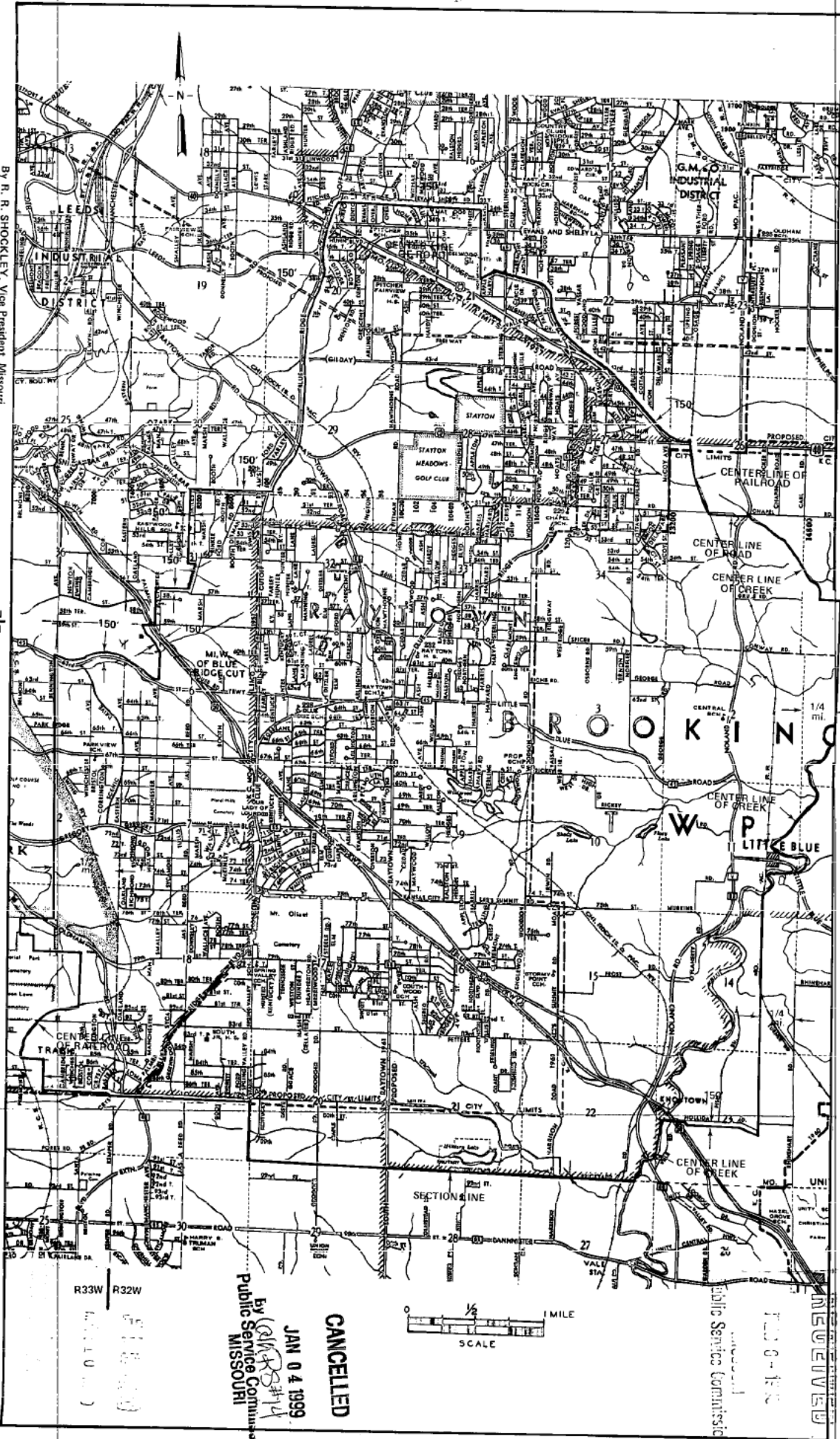
R31W/R30W
Effective: April 19, 1987

NO SUPPLEMENT TO THIS TARIFF WILL BE ISSUED HEREON FOR THE PURPOSE OF CANCELING THIS TARIFF.

P. S. C. Mo. No. 17

ZONE AND BASE RATE AREA MAP

Kansas City
Metropolitan Exchange
RAV TOWN ZONE
5th REVISION SHEET 14
REPLACING 4th REVISION SHEET 14

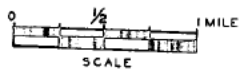


Issued: FEBRUARY 7, 1980

By R. R. SHOCKLEY, Vice President, Missouri
Southwestern Bell Telephone Company
St. Louis, Missouri

T49N
T48N

CANCELLED
JAN 04 1989
By Public Service Commission
MISSOURI



Effective: MAR 13 1980