

NO SUPPLEMENT TO THIS TARIFF WILL BE ISSUED EXCEPT FOR THE PURPOSE OF CANCELING THIS TARIFF.

P. S. C. Mo. No. 17

Union, Missouri

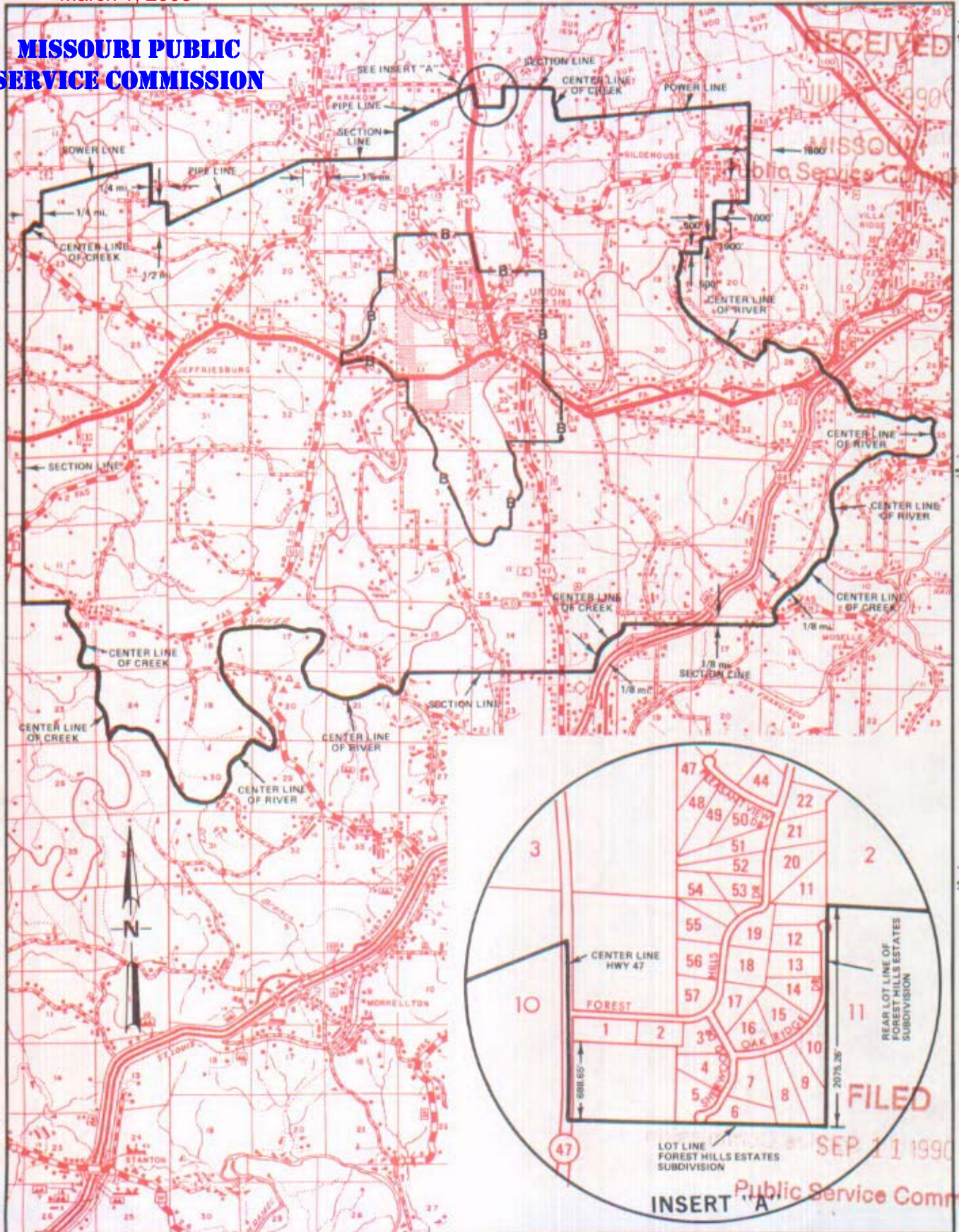
7th REVISED SHEET 3
REPLACING 6th REVISED SHEET 3

CANCELLED

March 1, 2006

EXCHANGE AREA MAP

MISSOURI PUBLIC SERVICE COMMISSION



T44N
T43N

T43N
T42N

T42N
T41N

R2W | R1W

R1W | R2W

Issued: **JUL 16 1990**

By R. D. BARRON, President, Missouri Division
Southwestern Bell Telephone Company
St. Louis, Missouri

Effective: **SEP 11 1990**