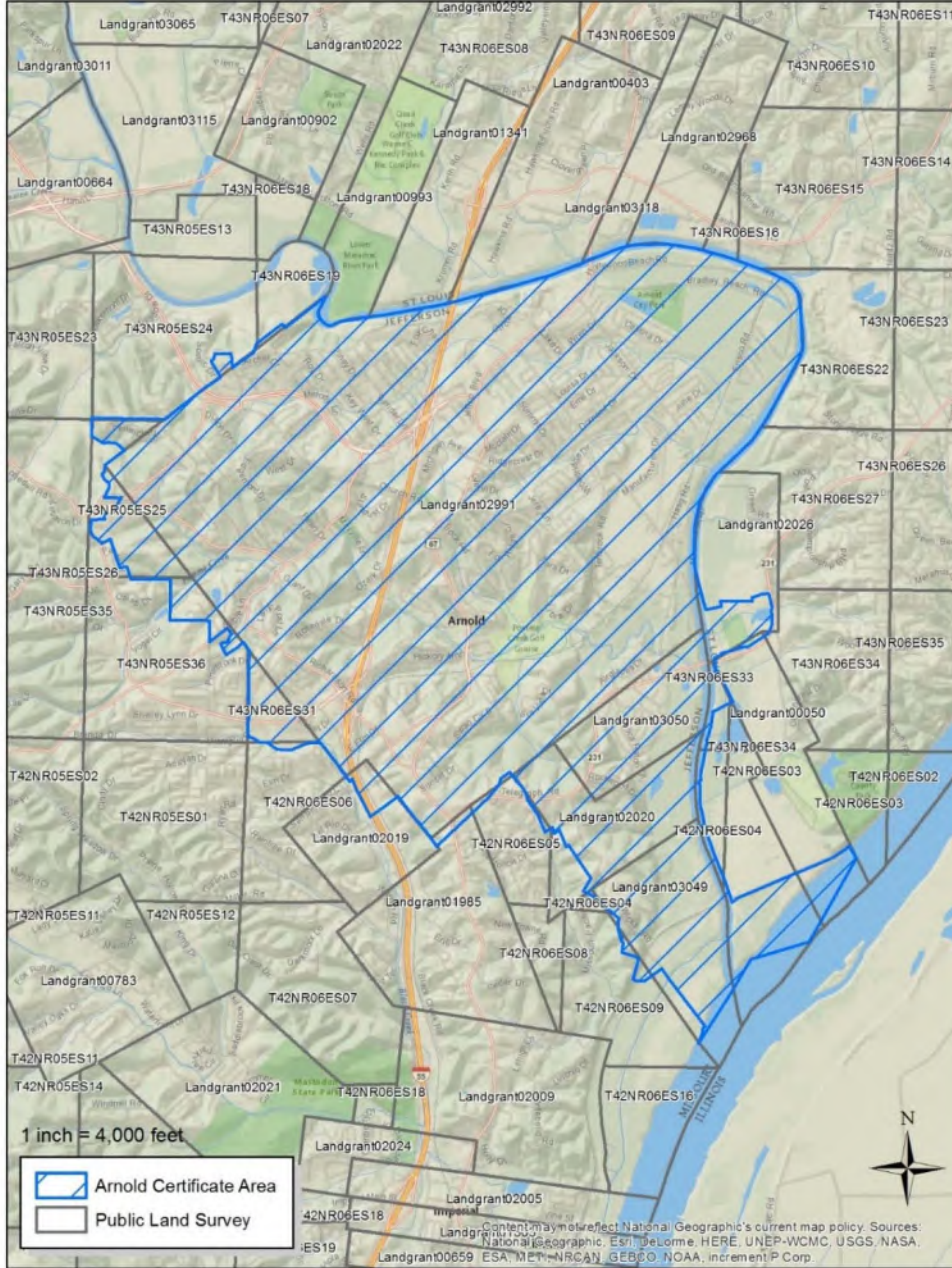


Missouri-American Water Company  
NAME OF ISSUING CORPORATION

FOR City of Arnold & Surrounding Area  
COMMUNITY, TOWN, OR CITY

**Service Area  
Boundary Map**



\* Indicates new rate or text  
+ Indicates change

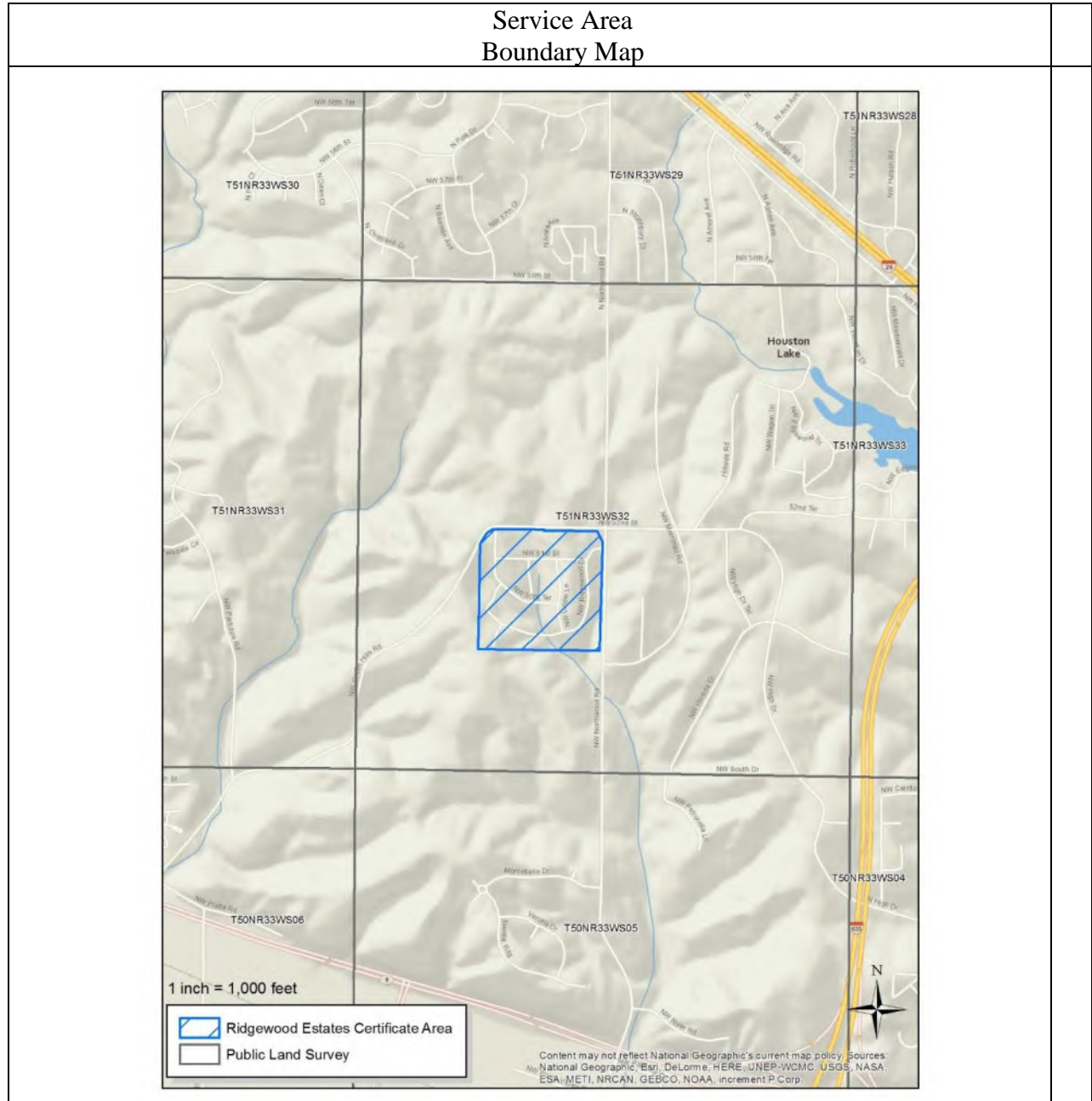
DATE OF ISSUE: April 5, 2017  
ISSUED BY: Cheryl Norton, President  
727 Craig Road, St. Louis, MO 63141

DATE EFFECTIVE: May 5, 2017

FILED  
Missouri Public  
Service Commission  
ST-2017-0261; YS-2017-0192

Missouri-American Water Company  
NAME OF ISSUING CORPORATION

FOR Platte County  
COMMUNITY, TOWN, OR CITY



\* Indicates new rate or text  
+ Indicates change

DATE OF ISSUE: April 5, 2017  
ISSUED BY: Cheryl Norton, President  
727 Craig Road, St. Louis, MO 63141

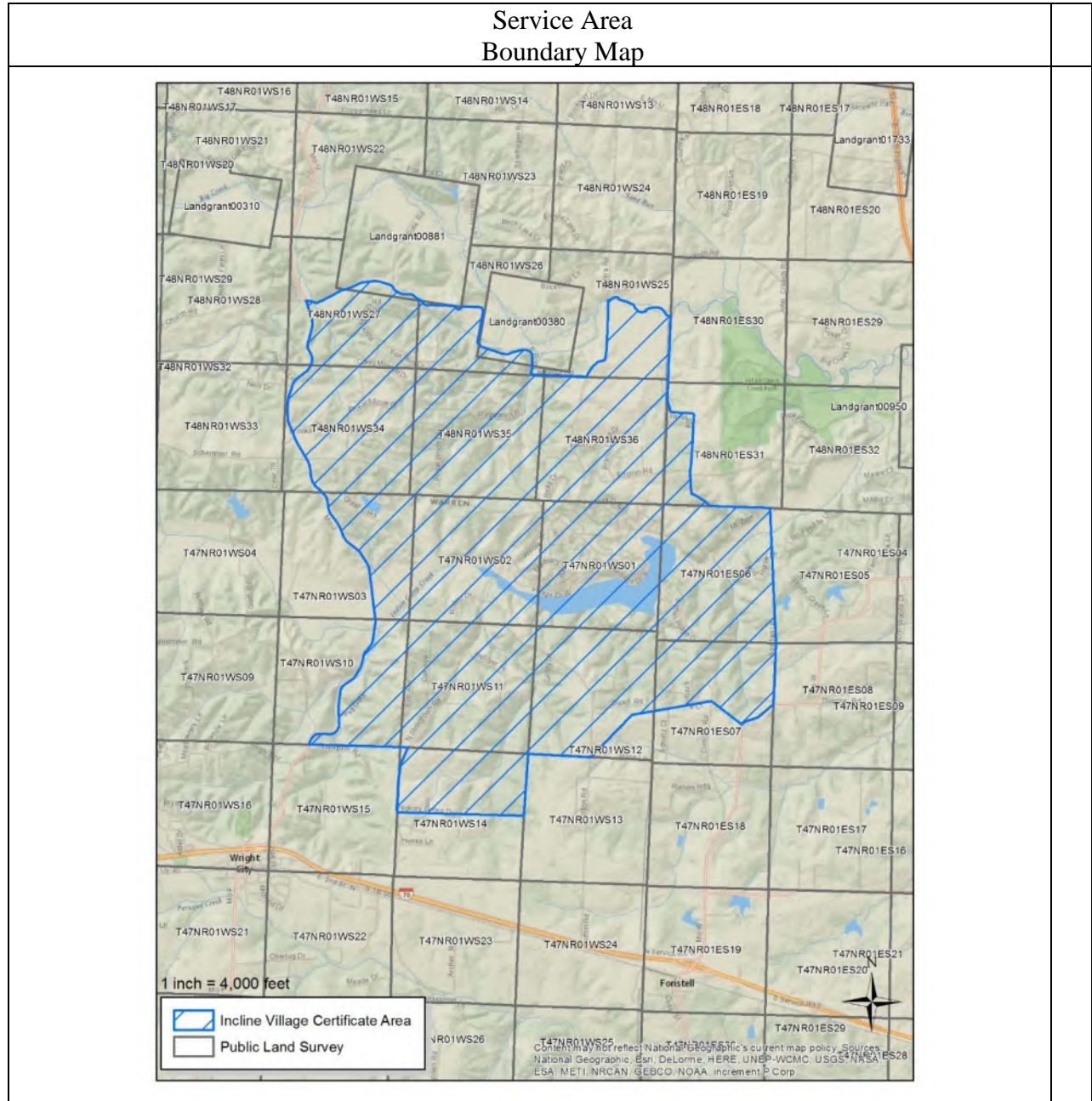
DATE EFFECTIVE: May 5, 2017

FILED  
Missouri Public  
Service Commission  
ST-2017-0261; YS-2017-0192



Missouri-American Water Company  
NAME OF ISSUING CORPORATION

FOR Incline Village  
COMMUNITY, TOWN, OR CITY



\* Indicates new rate or text  
+ Indicates change

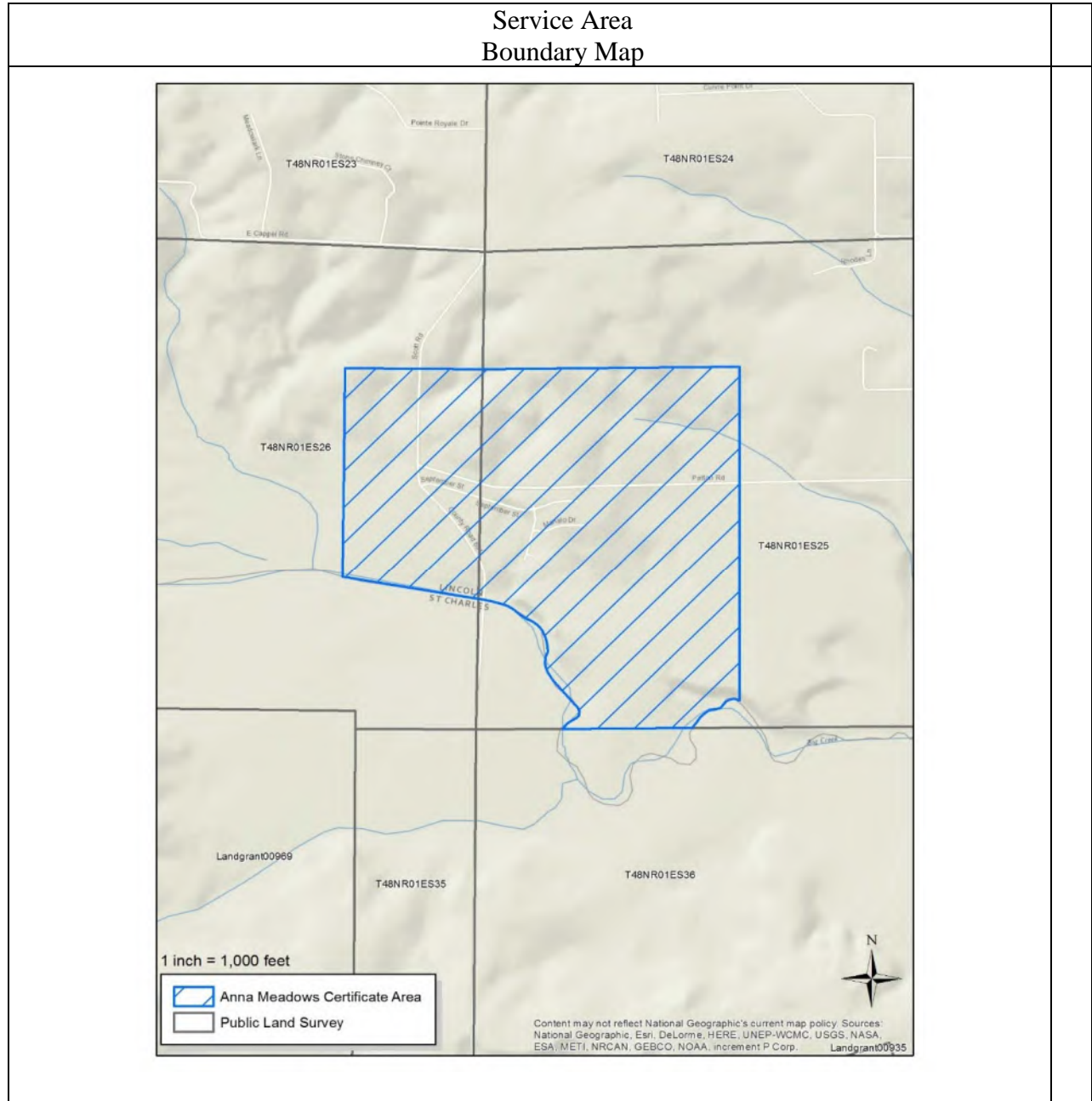
DATE OF ISSUE: April 5, 2017  
ISSUED BY: Cheryl Norton, President  
727 Craig Road, St. Louis, MO 63141

DATE EFFECTIVE: May 5, 2017

FILED  
Missouri Public  
Service Commission  
ST-2017-0261; YS-2017-0192

Missouri-American Water Company  
NAME OF ISSUING CORPORATION

FOR Anna Meadows  
COMMUNITY, TOWN, OR CITY



\* Indicates new rate or text  
+ Indicates change

DATE OF ISSUE: April 5, 2017  
ISSUED BY: Cheryl Norton, President  
727 Craig Road, St. Louis, MO 63141

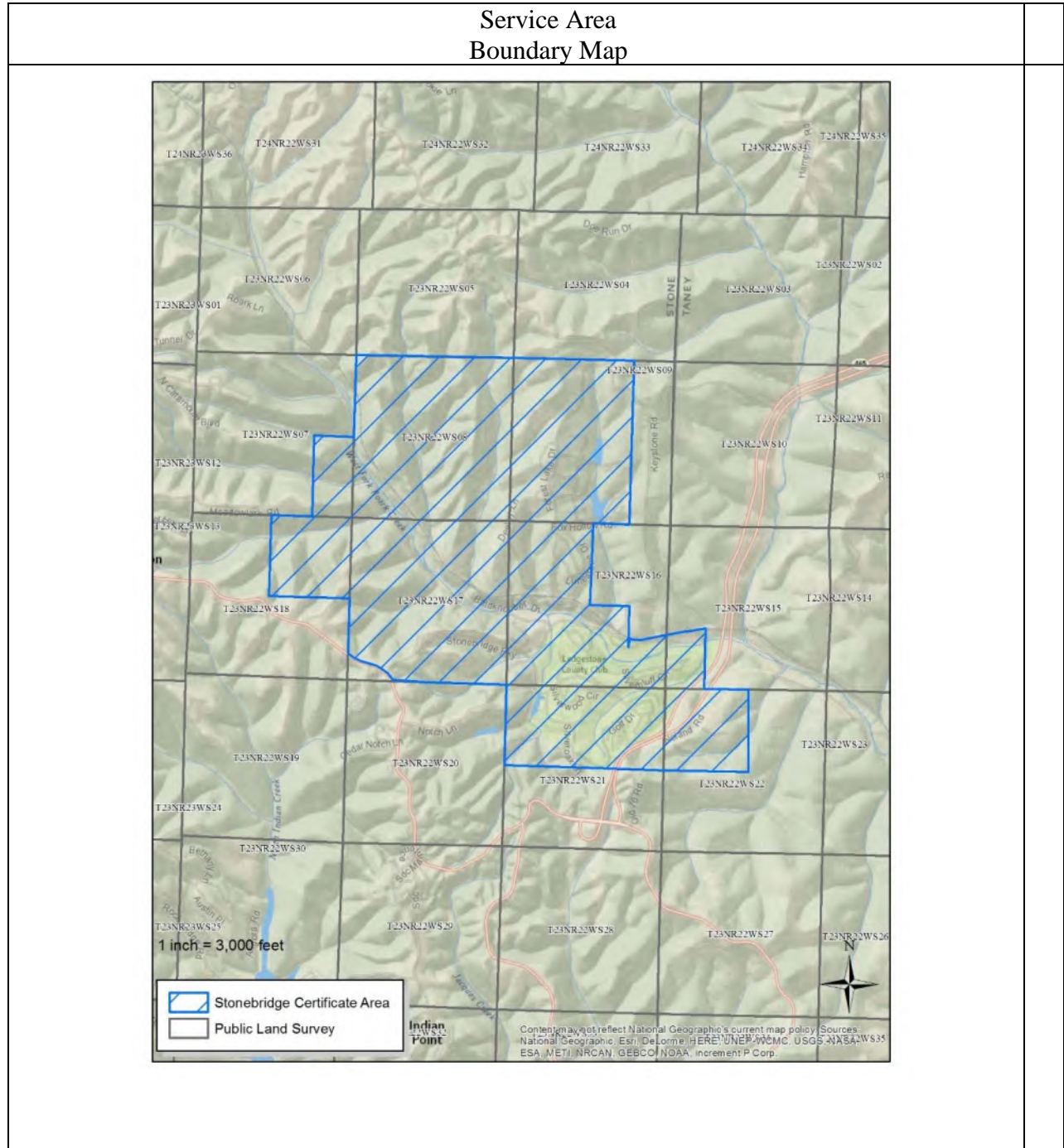
DATE EFFECTIVE: May 5, 2017

FILED  
Missouri Public  
Service Commission  
ST-2017-0261; YS-2017-0192



Missouri-American Water Company  
NAME OF ISSUING CORPORATION

FOR Stonebridge Village  
COMMUNITY, TOWN, OR CITY



\* Indicates new rate or text  
+ Indicates change

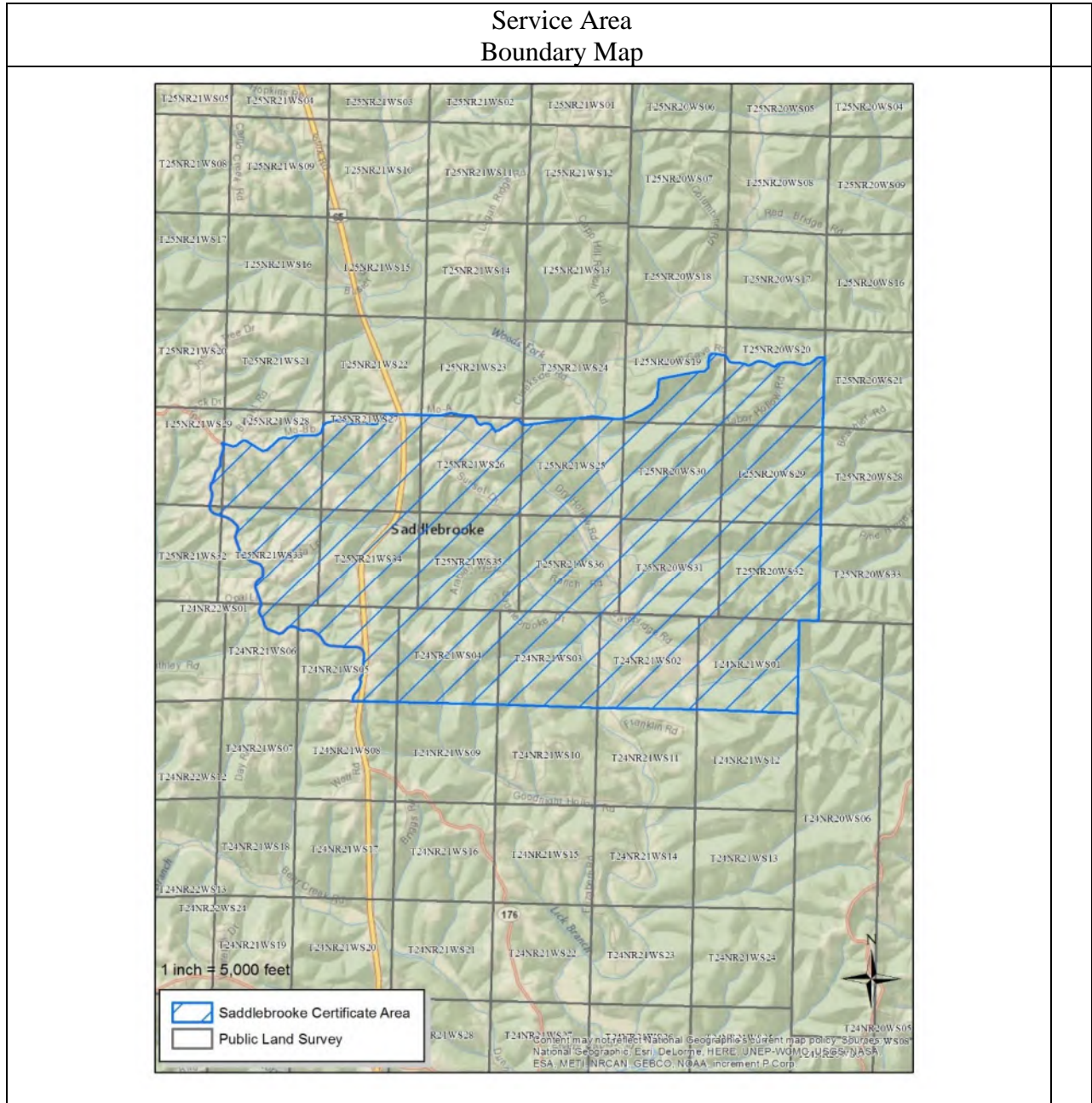
DATE OF ISSUE: April 5, 2017  
ISSUED BY: Cheryl Norton, President  
727 Craig Road, St. Louis, MO 63141

DATE EFFECTIVE: May 5, 2017

**FILED**  
**Missouri Public**  
**Service Commission**  
**ST-2017-0261; YS-2017-0192**

Missouri-American Water Company  
NAME OF ISSUING CORPORATION

FOR Saddlebrooke Village  
COMMUNITY, TOWN, OR CITY



\* Indicates new rate or text  
+ Indicates change

DATE OF ISSUE: April 5, 2017  
ISSUED BY: Cheryl Norton, President  
727 Craig Road, St. Louis, MO 63141

DATE EFFECTIVE: May 5, 2017

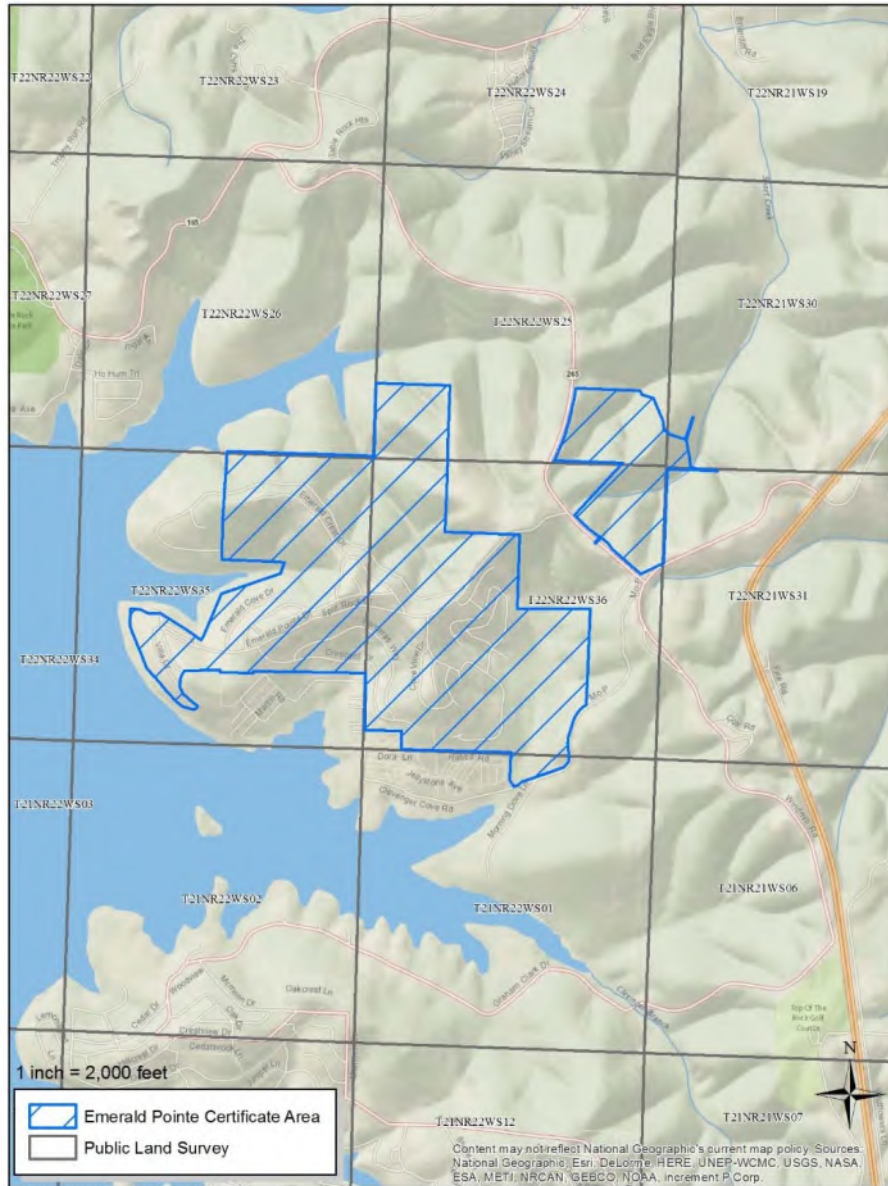
FILED  
Missouri Public  
Service Commission  
ST-2017-0261; YS-2017-0192



Missouri-American Water Company  
NAME OF ISSUING CORPORATION

FOR Emerald Pointe  
COMMUNITY, TOWN, OR CITY

Service Area  
Boundary Map



\* Indicates new rate or text  
+ Indicates change

DATE OF ISSUE: April 5, 2017  
ISSUED BY: Cheryl Norton, President  
727 Craig Road, St. Louis, MO 63141

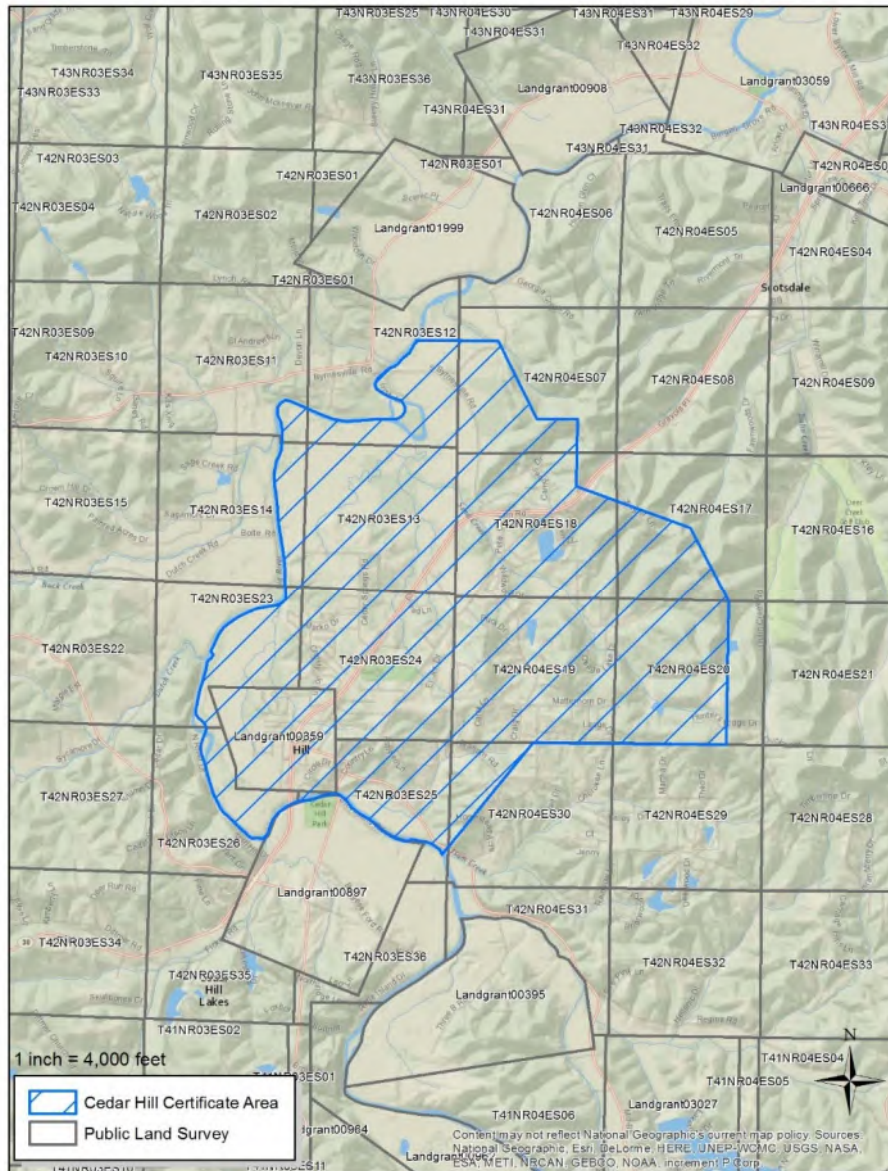
DATE EFFECTIVE: May 5, 2017

FILED  
Missouri Public  
Service Commission  
ST-2017-0261; YS-2017-0192

Missouri-American Water Company  
NAME OF ISSUING CORPORATION

FOR Cedar Hill  
COMMUNITY, TOWN, OR CITY

Service Area  
Boundary Map



\* Indicates new rate or text  
+ Indicates change

DATE OF ISSUE: April 5, 2017  
ISSUED BY: Cheryl Norton, President  
727 Craig Road, St. Louis, MO 63141

DATE EFFECTIVE: May 5, 2017

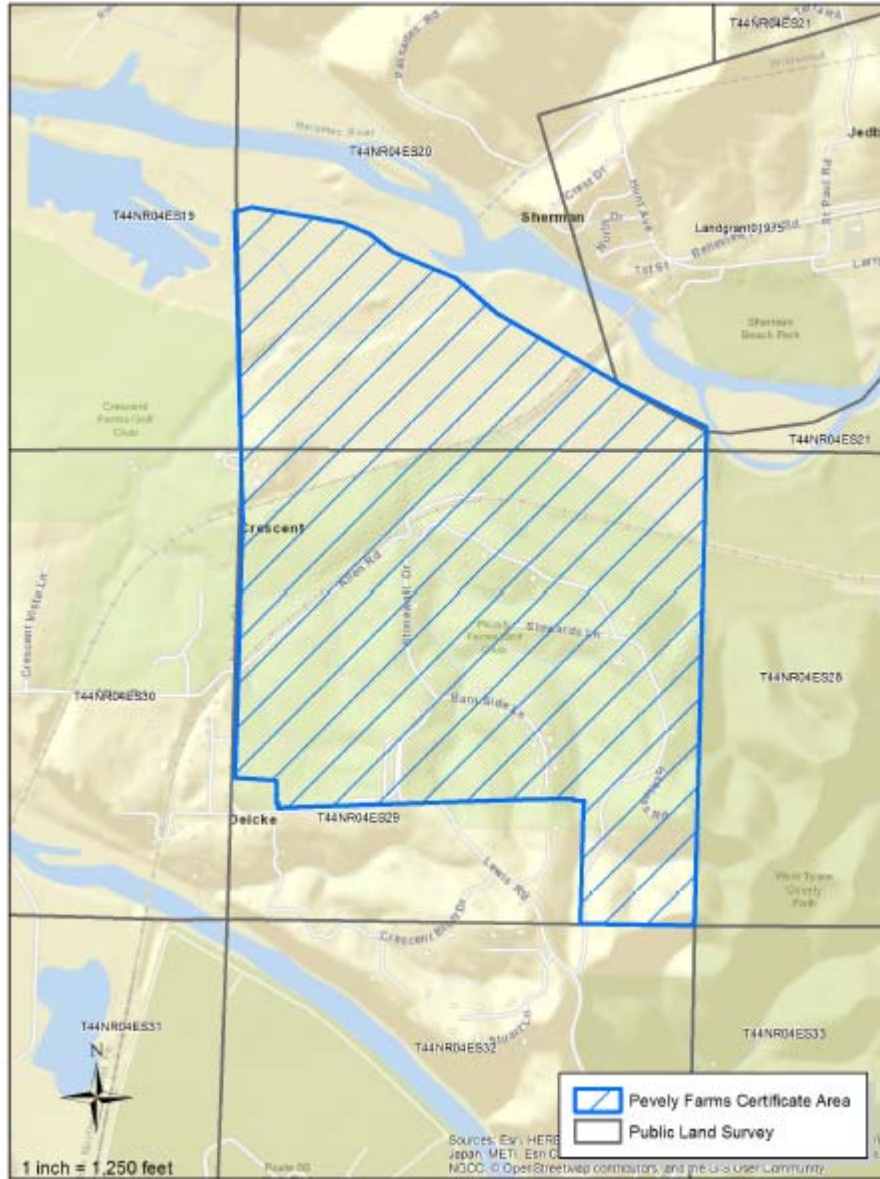
FILED  
Missouri Public  
Service Commission  
ST-2017-0261; YS-2017-0192



Missouri-American Water Company  
NAME OF ISSUING CORPORATION

FOR Pevely Farms  
COMMUNITY, TOWN, OR CITY

Service Area  
Boundary Map



\* Indicates new rate or text  
+ Indicates change

DATE OF ISSUE: August 31, 2017  
ISSUED BY: Cheryl Norton, President  
727 Craig Road, St. Louis, MO 63141

DATE EFFECTIVE: ~~September 30, 2017~~  
September 18, 2017

FILED  
Missouri Public  
Service Commission  
WA-2017-0278; YS-2018-0028

Missouri-American Water Company  
NAME OF ISSUING CORPORATION

FOR Homestead Estates  
COMMUNITY, TOWN, OR CITY

Service Area  
Boundary Map



- \* Indicates new rate or text
- + Indicates change

DATE OF ISSUE November 9, 2017 DATE EFFECTIVE ~~December 9, 2017~~ **November 15, 2017**  
 Month Day Year Month Day Year

ISSUED BY Cheryl Norton, President  
727 Craig Road, St. Louis, MO 63141

**FILED**  
**Missouri Public**  
**Service Commission**  
**SA-2018-0019; YS-2018-0059**





Missouri-American Water Company  
NAME OF ISSUING CORPORATION

FOR Meramec (Fenton)  
COMMUNITY, TOWN, OR CITY

Service Area  
Boundary Map



\* Indicates new rate or text  
+ Indicates change

DATE OF ISSUE: April 5, 2017  
ISSUED BY: Cheryl Norton, President  
727 Craig Road, St. Louis, MO 63141

DATE EFFECTIVE: May 5, 2017

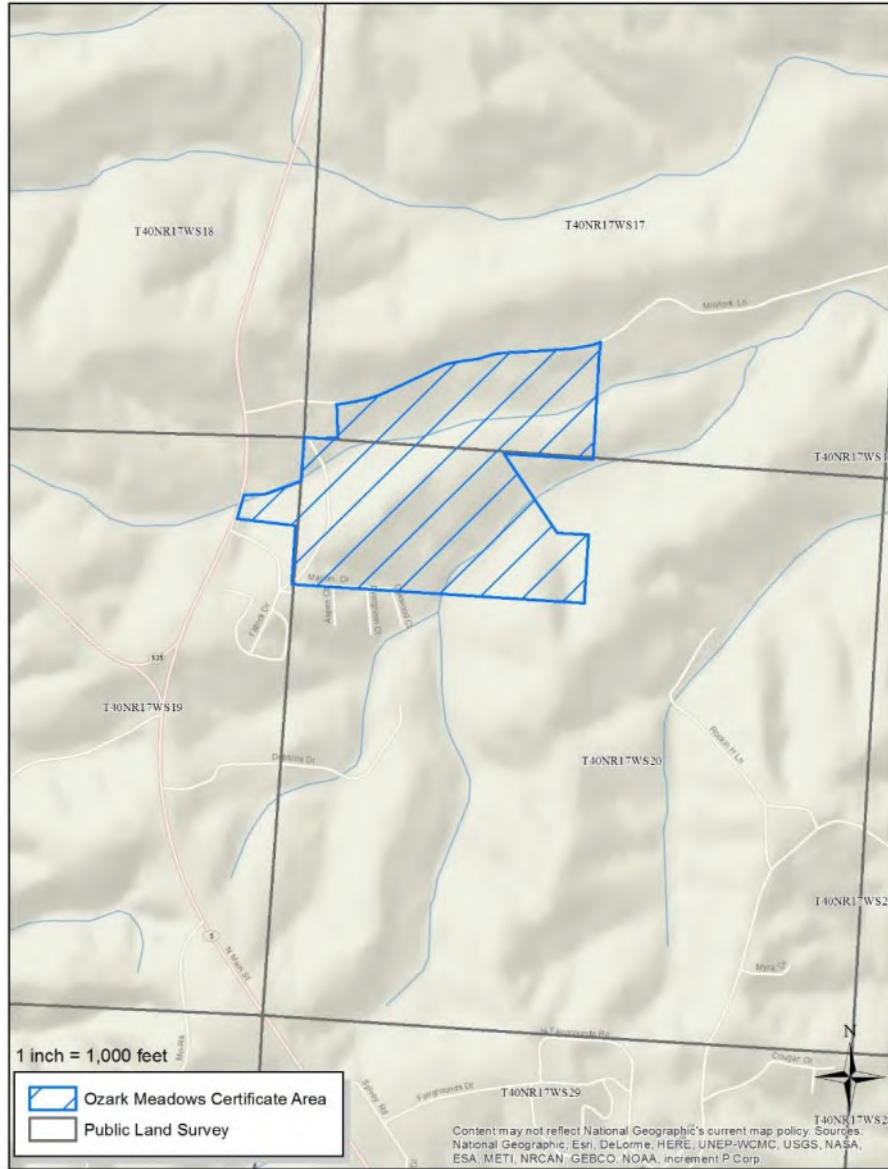
FILED  
Missouri Public  
Service Commission  
ST-2017-0261; YS-2017-0192



Missouri-American Water Company  
NAME OF ISSUING CORPORATION

FOR Morgan County (Ozark Meadows)  
COMMUNITY, TOWN, OR CITY

Service Area  
Boundary Map



\* Indicates new rate or text  
+ Indicates change

DATE OF ISSUE: April 5, 2017  
ISSUED BY: Cheryl Norton, President  
727 Craig Road, St. Louis, MO 63141

DATE EFFECTIVE: May 5, 2017

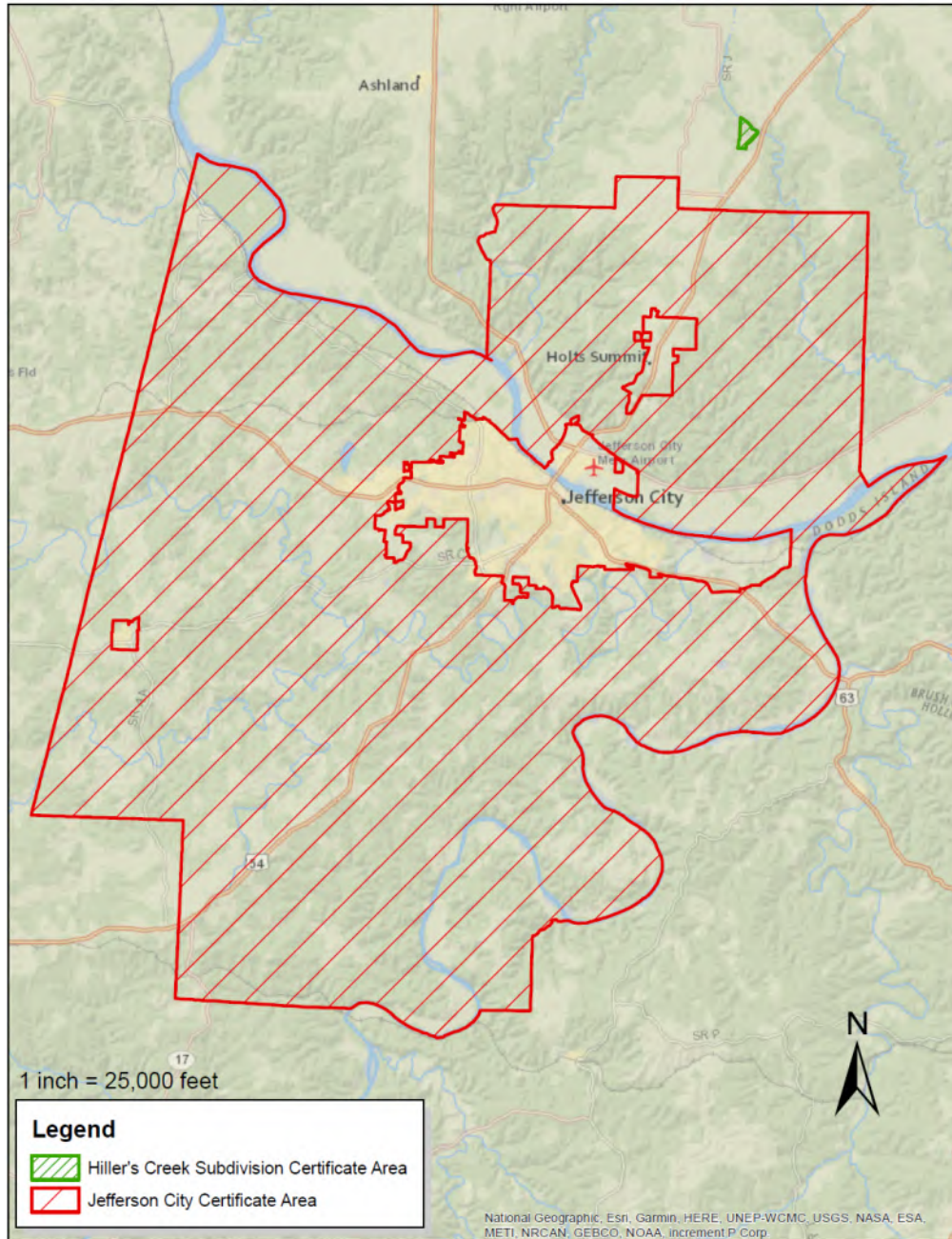
FILED  
Missouri Public  
Service Commission  
ST-2017-0261; YS-2017-0192

Missouri-American Water Company  
Name of Issuing Corporation

For

Cole & Callaway Counties (Jefferson City)  
Community, Town or City

**Sewer Service Area  
Boundary Area Map**



\* Indicates new rate or text

+ Indicates change

Date of Issue:

August 12, 2019

Effective Date:

September 11, 2019

Issued By:

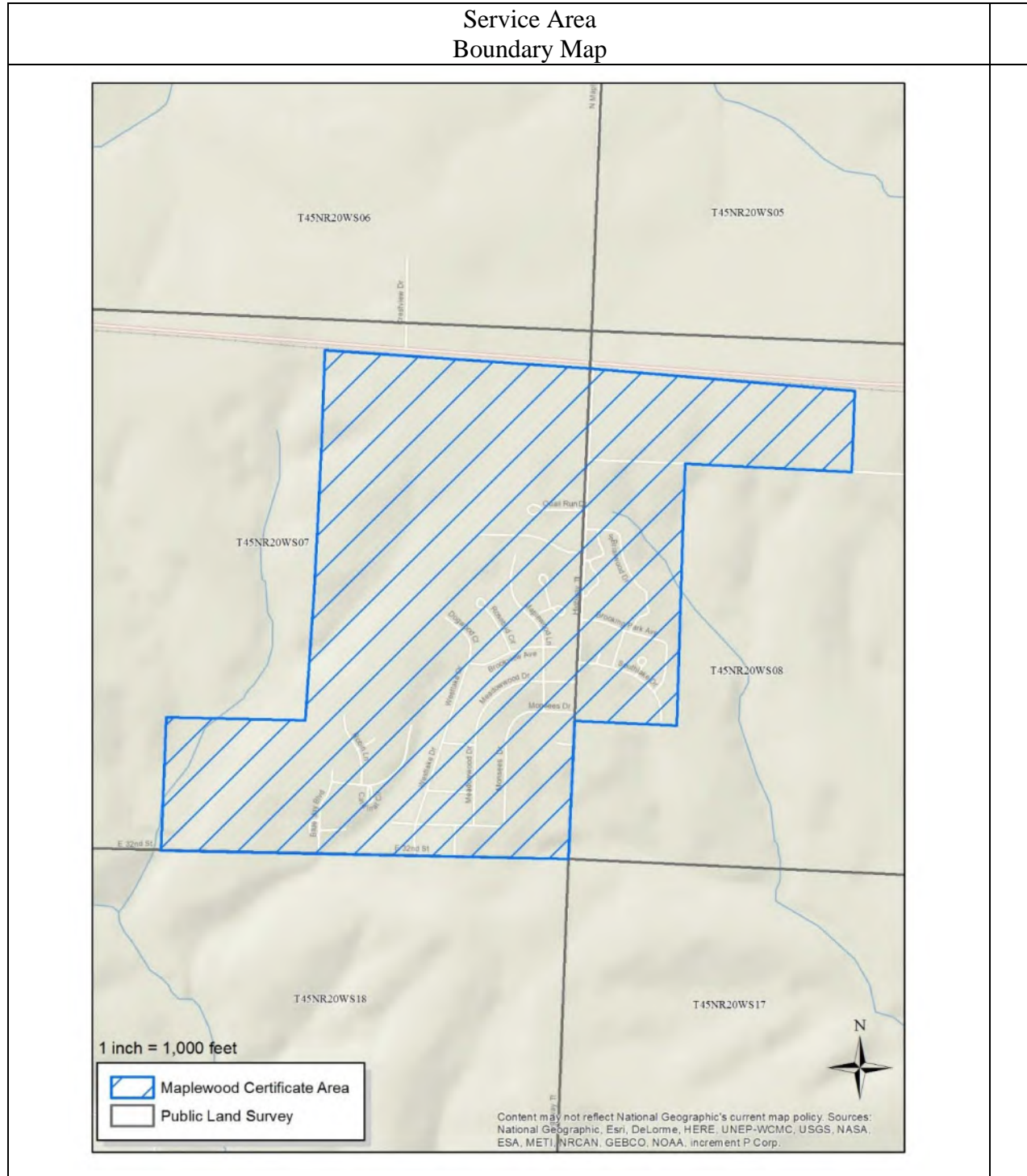
Deborah D. Dewey, President  
727 Craig Road, St. Louis, MO 63141

**FILED**  
**Missouri Public**  
**Service Commission**  
**SA-2019-0334; YS-2020-0026**



Missouri-American Water Company  
NAME OF ISSUING CORPORATION

FOR Pettis County (Maplewood)  
COMMUNITY, TOWN, OR CITY



\* Indicates new rate or text  
+ Indicates change

DATE OF ISSUE: April 5, 2017  
ISSUED BY: Cheryl Norton, President  
727 Craig Road, St. Louis, MO 63141

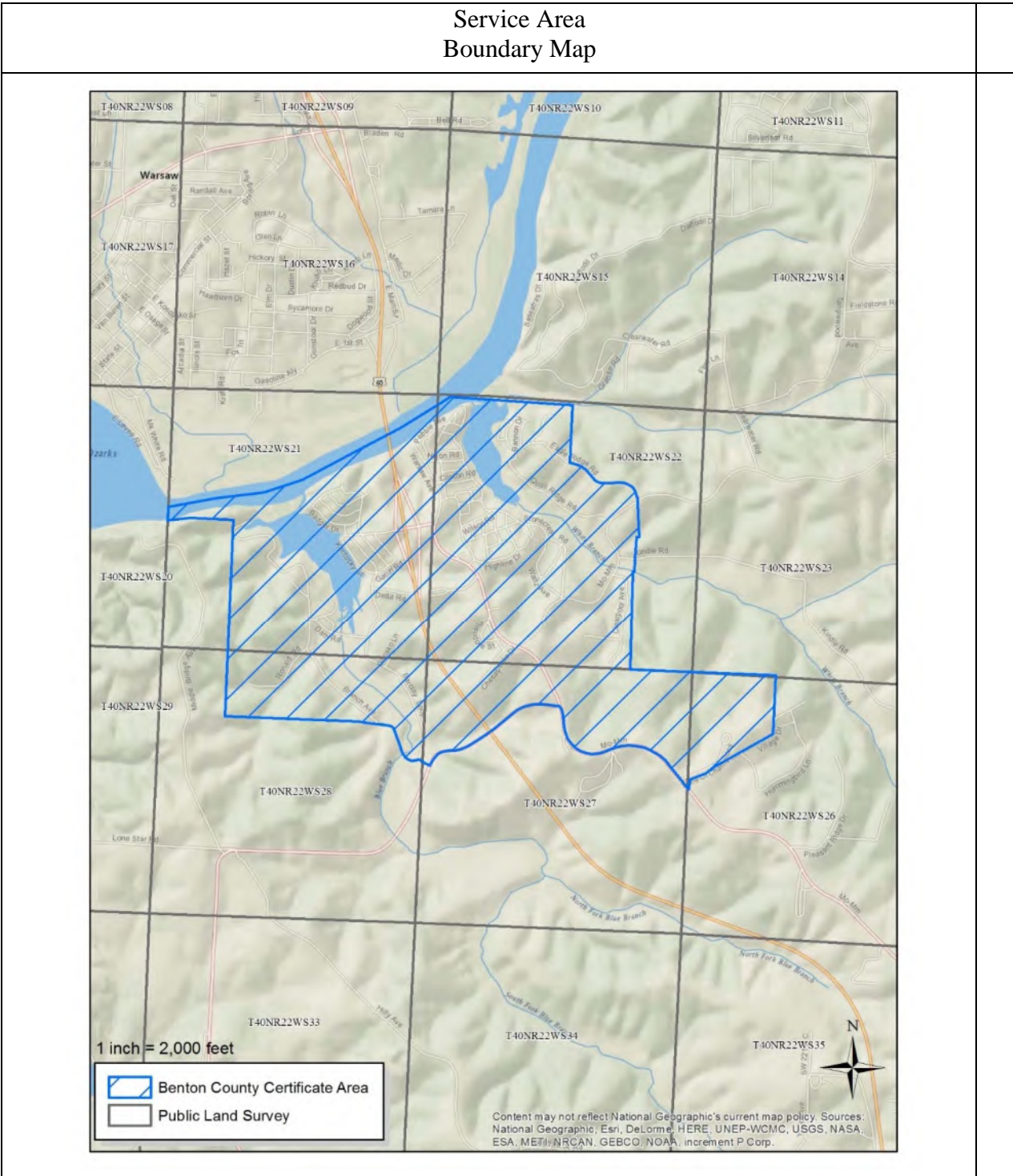
DATE EFFECTIVE: May 5, 2017

FILED  
Missouri Public  
Service Commission  
ST-2017-0261; YS-2017-0192

Missouri-American Water Company  
NAME OF ISSUING CORPORATION

FOR Benton County  
COMMUNITY, TOWN, OR CITY

Service Area  
Boundary Map



\* Indicates new rate or text  
+ Indicates change

DATE OF ISSUE: April 5, 2017  
ISSUED BY: Cheryl Norton, President  
727 Craig Road, St. Louis, MO 63141

DATE EFFECTIVE: May 5, 2017

FILED  
Missouri Public  
Service Commission  
ST-2017-0261; YS-2017-0192



Missouri-American Water Company  
NAME OF ISSUING CORPORATION

FOR Hickory Hills & Temple Terrace  
COMMUNITY, TOWN, OR CITY



\* Indicates new rate or text  
+ Indicates change

DATE OF ISSUE: April 5, 2017  
ISSUED BY: Cheryl Norton, President  
727 Craig Road, St. Louis, MO 63141

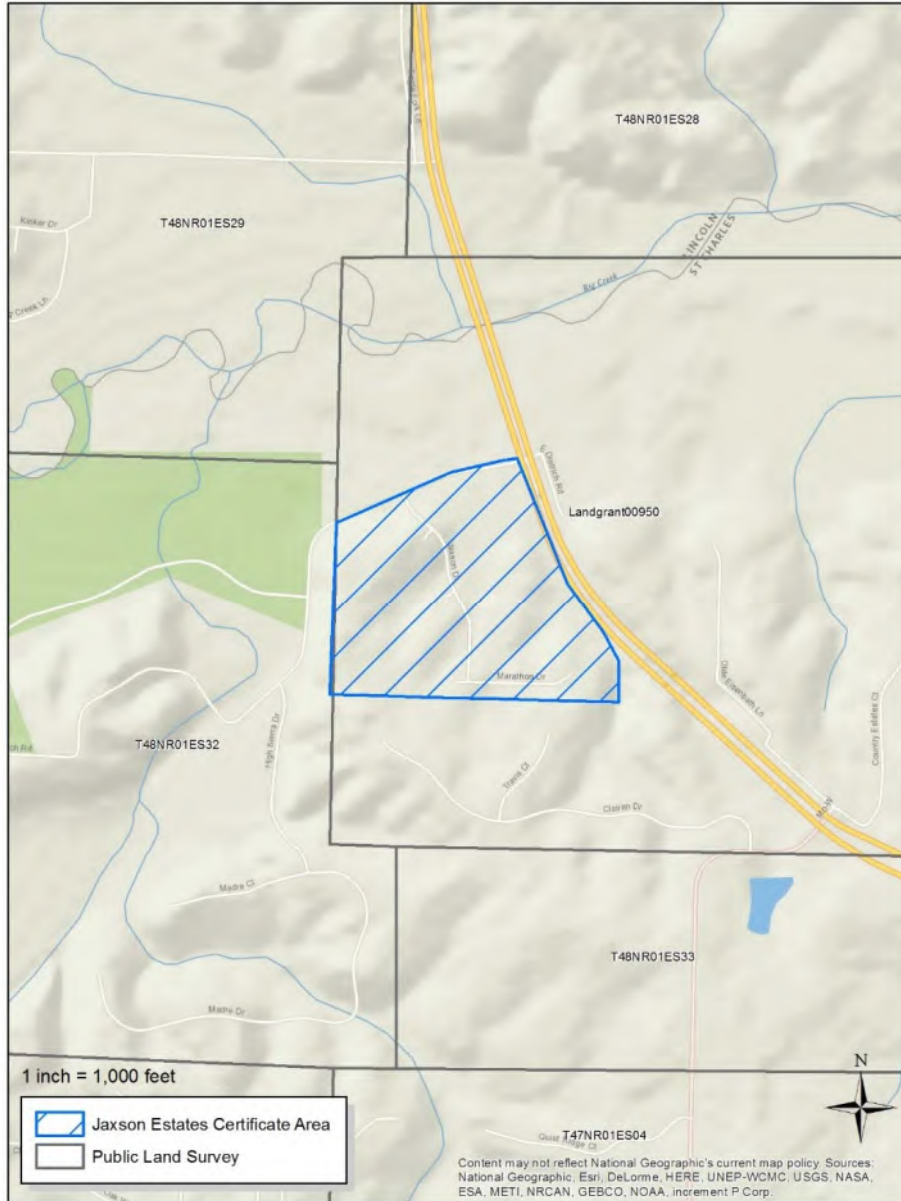
DATE EFFECTIVE: May 5, 2017

FILED  
Missouri Public  
Service Commission  
ST-2017-0261; YS-2017-0192

Missouri-American Water Company  
NAME OF ISSUING CORPORATION

FOR Jaxson Estates  
COMMUNITY, TOWN, OR CITY

Service Area  
Boundary Map



\* Indicates new rate or text  
+ Indicates change

DATE OF ISSUE: April 5, 2017  
ISSUED BY: Cheryl Norton, President  
727 Craig Road, St. Louis, MO 63141

DATE EFFECTIVE: May 5, 2017

FILED  
Missouri Public  
Service Commission  
ST-2017-0261; YS-2017-0192

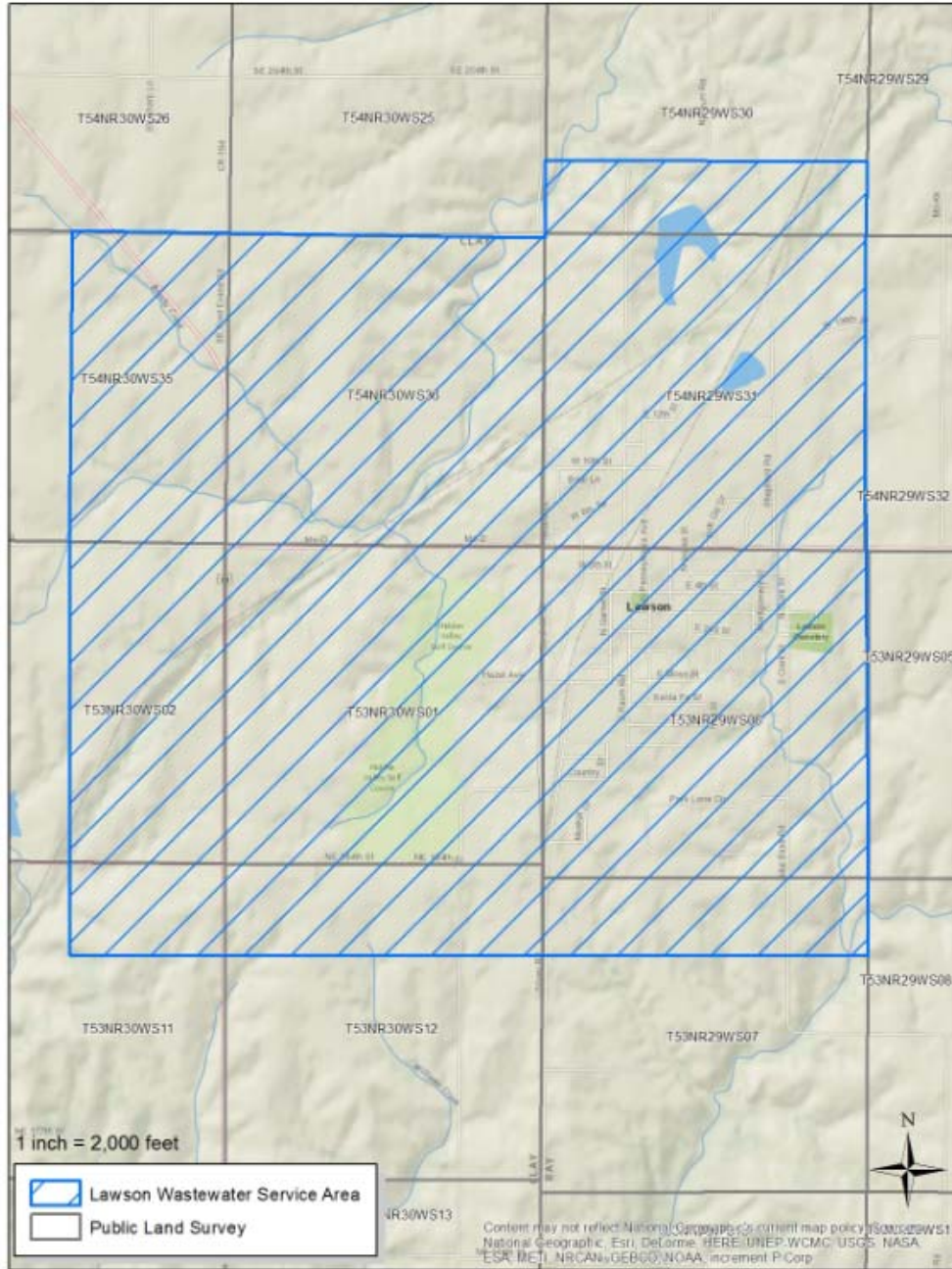


Missouri-American Water Company  
Name of Issuing Corporation

For

City of Lawson  
Community, Town or City

**Sewer Service Area  
Boundary Area Map**



\* Indicates new rate or text

+ Indicates change

Date of Issue: July 20, 2018

Effective Date:

August 19, 2018

Issued By: Cheryl Norton, President  
727 Craig Road, St. Louis, MO 63141

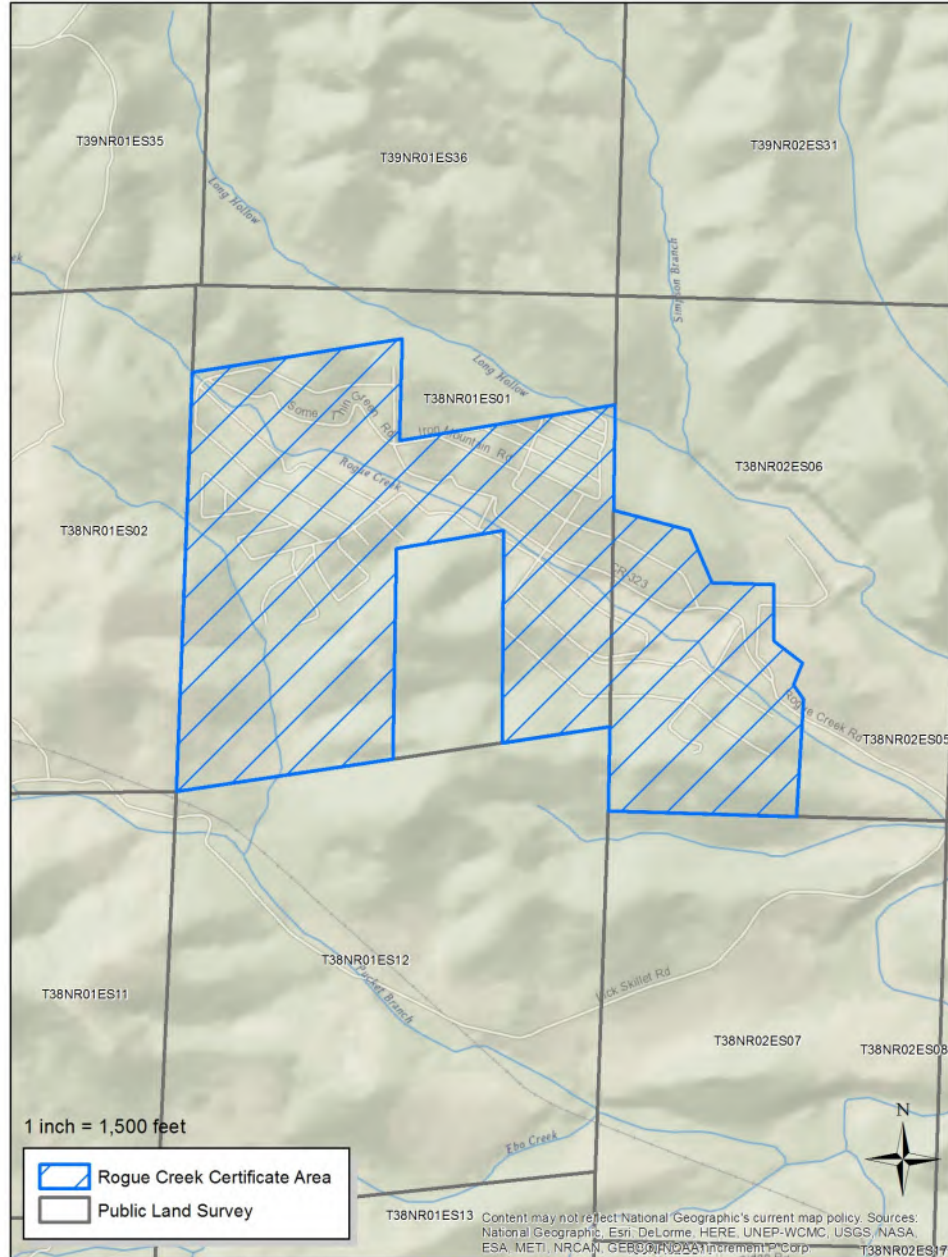
**FILED**  
**Missouri Public**  
**Service Commission**  
**WA-2018-0222; YS-2019-0007**

Missouri-American Water Company  
Name of Issuing Corporation

For

Rogue Creek  
Community, Town or City

**Sewer Service Area  
Boundary Area Map**



\* *Indicates new rate or text*

+ *Indicates change*

Date of Issue: November 8, 2018      Effective Date: December 8, 2018

Issued By: Cheryl Norton, President  
727 Craig Road, St. Louis, MO 63141

**FILED**  
**Missouri Public**  
**Service Commission**  
**WM-2019-0018; YS-2019-0088**

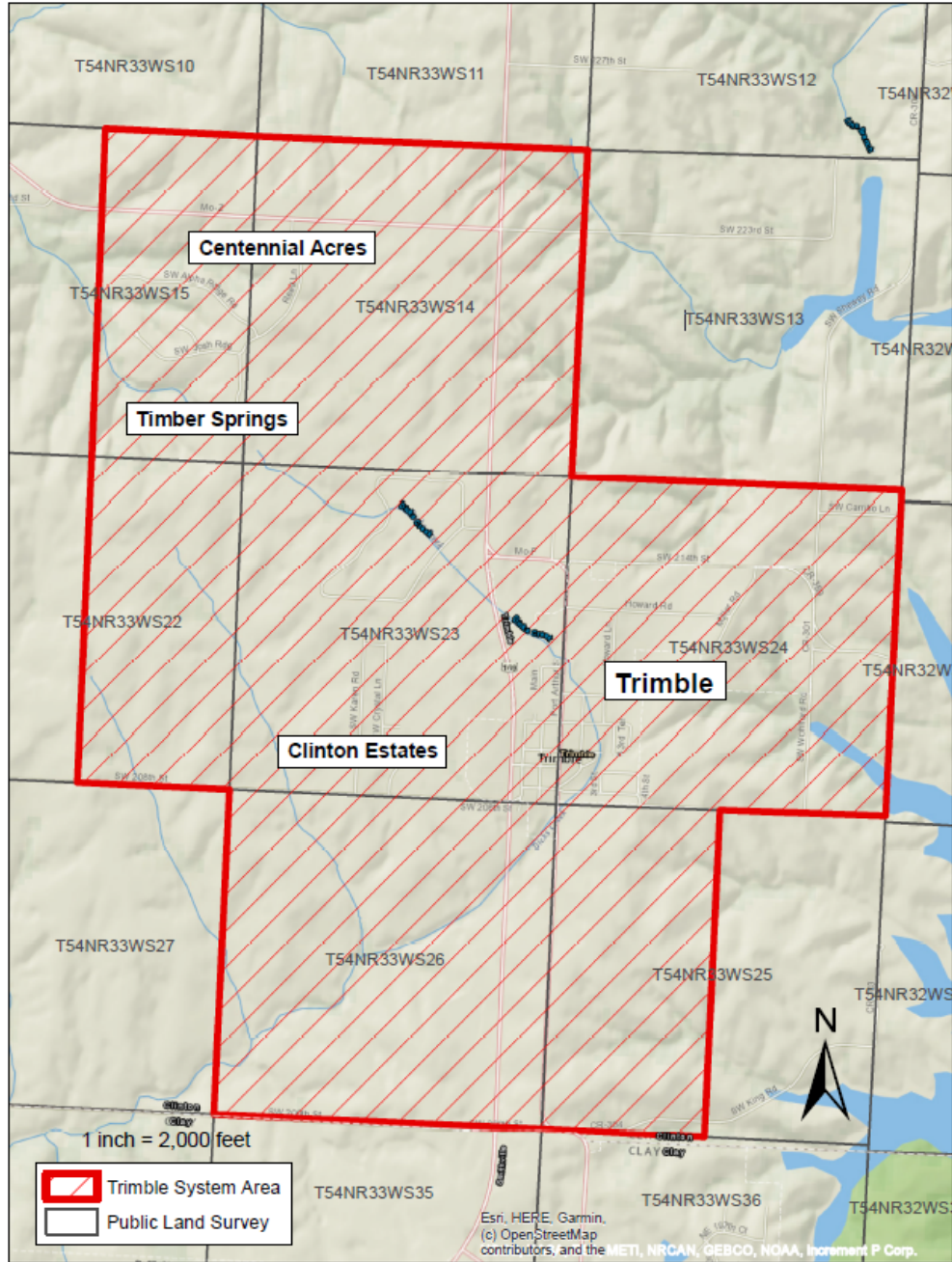


Missouri-American Water Company  
Name of Issuing Corporation

For

Timber Springs  
Community, Town or City

### Sewer Service Area Boundary Area Map



\* Indicates new rate or text

+ Indicates change

Date of Issue:

March 24, 2021

Effective Date:

April 9, 2021

~~April 23, 2021~~

Issued By:

Deborah D. Dewey, President  
727 Craig Road, St. Louis, MO 63141

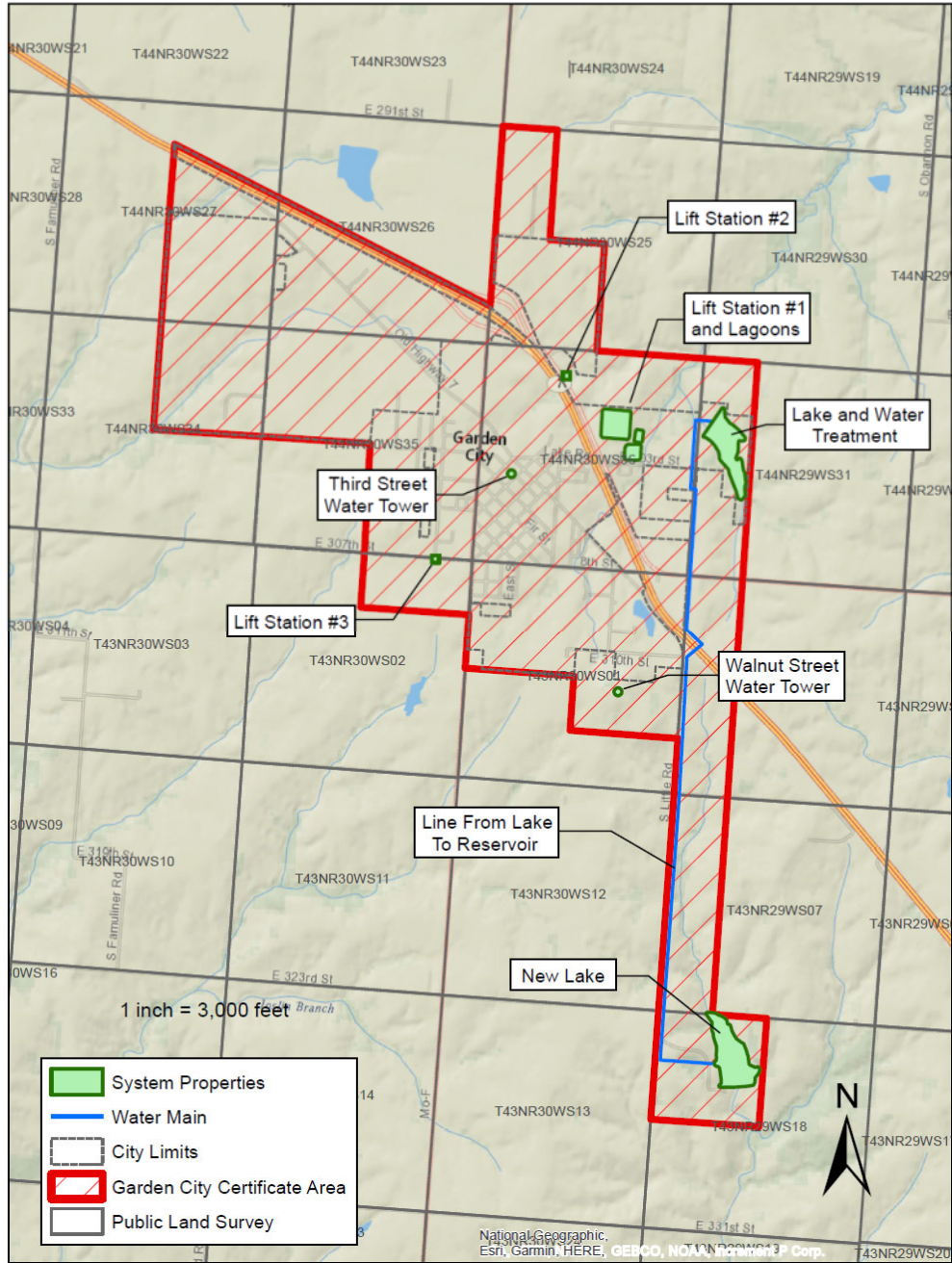
**FILED**  
**Missouri Public**  
**Service Commission**  
**SA-2021-0074; JS-2021-0173**

Missouri-American Water Company  
Name of Issuing Corporation

For

Garden City  
Community, Town or City

### Sewer Service Area Boundary Area Map



\* Indicates new rate or text

+ Indicates change

Date of Issue: November 9, 2021

Effective Date:

December 9, 2021

Issued By: Rich C. Svindland, President  
727 Craig Road, St. Louis, MO 63141

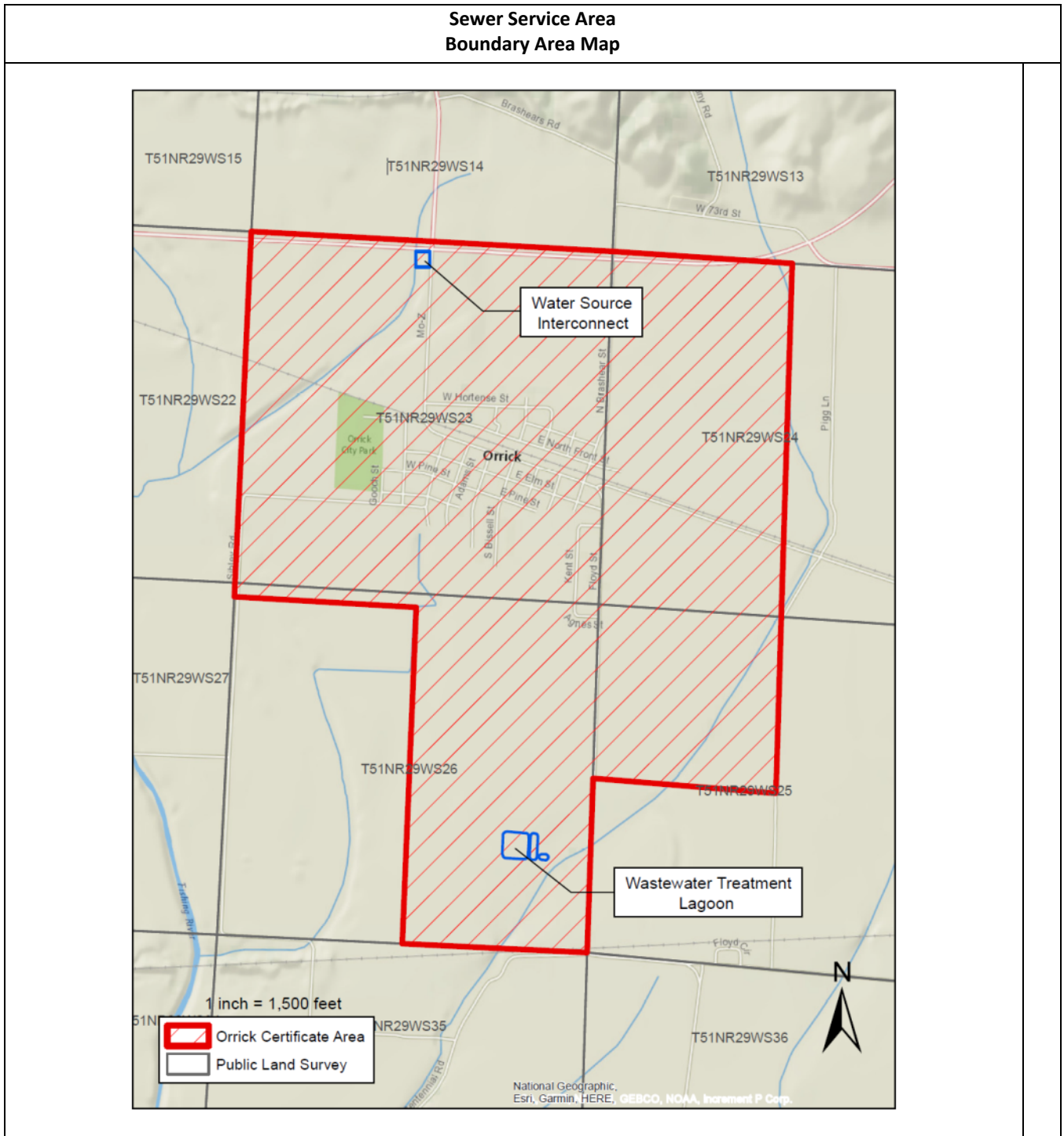
**FILED**  
**Missouri Public**  
**Service Commission**  
**WA-2021-0391; JS-2022-0150**



Missouri-American Water Company  
Name of Issuing Corporation

For

Orrick  
Community, Town or City



\* Indicates new rate or text

+ Indicates change

Date of Issue:

December 20, 2021

Effective Date:

January 19, 2022

Issued By:

Rich C. Svindland, President  
727 Craig Road, St. Louis, MO 63141

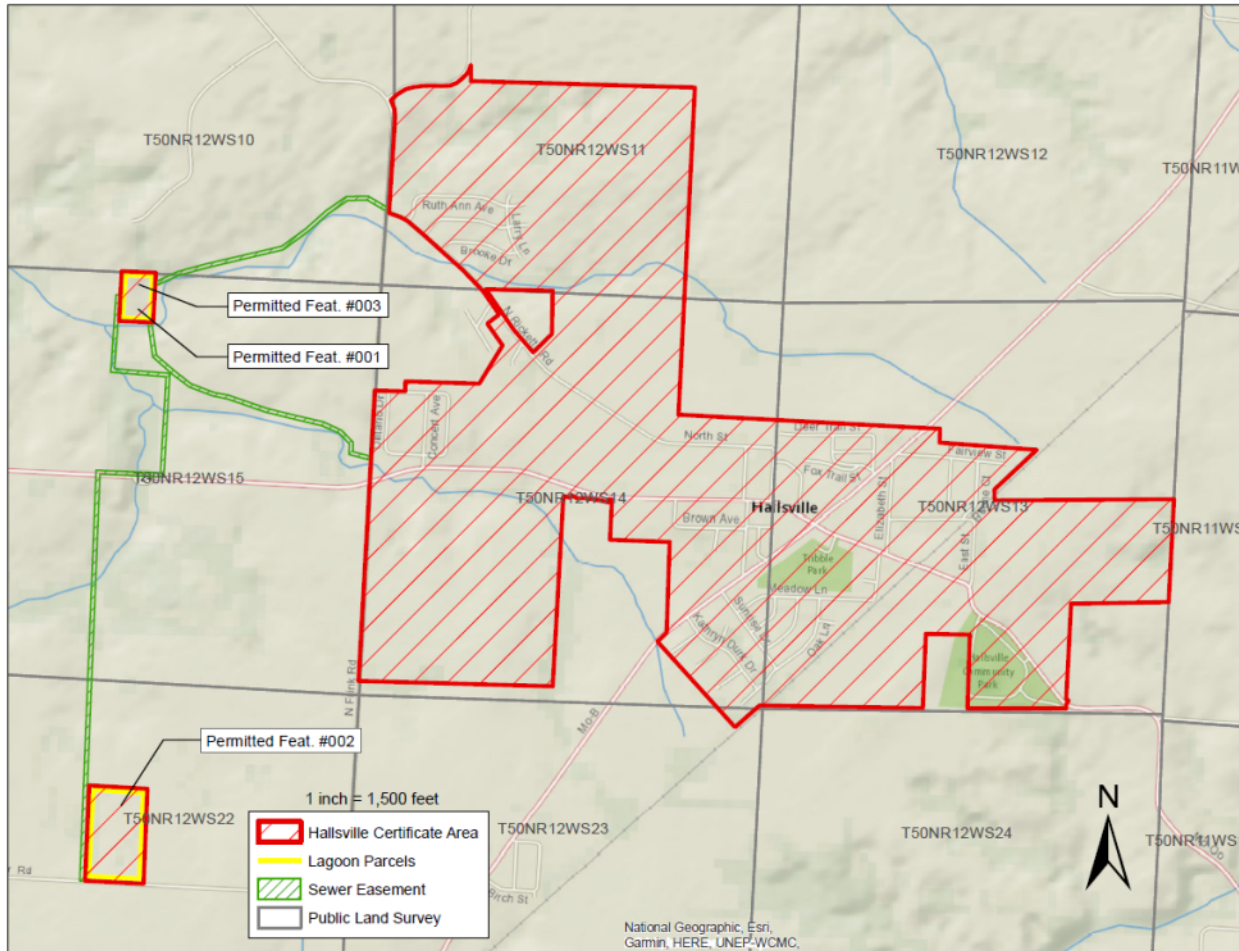
**FILED**  
Missouri Public  
Service Commission  
WA-2022-0049; YS-2022-0188

Missouri-American Water Company  
Name of Issuing Corporation

For

Hallsville  
Community, Town or City

**Sewer Service Area  
Boundary Area Map**



\* Indicates new rate or text

+ Indicates change

Date of Issue:

February 1, 2022

Effective Date:

February 25, 2022

~~March 3, 2022~~

Issued By:

Rich C. Svindland, President  
727 Craig Road, St. Louis, MO 63141

**FILED**  
**Missouri Public**  
**Service Commission**  
**SA-2021-0017; JS-2022-0219**

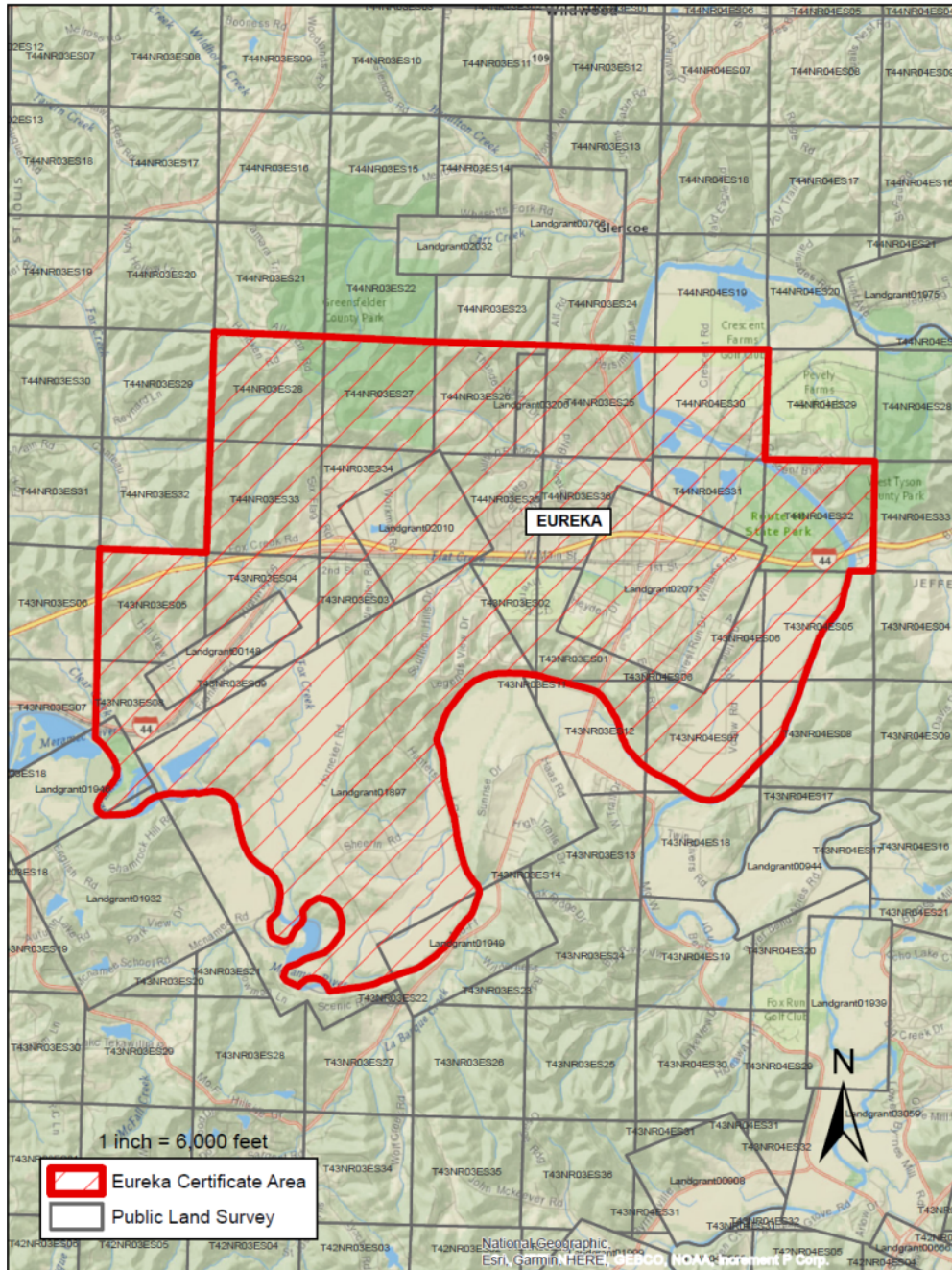


Missouri-American Water Company  
Name of Issuing Corporation

For

City of Eureka  
Community, Town or City

**Sewer Service Area  
Boundary Area Map**



\* Indicates new rate or text

+ Indicates change

Date of Issue: July 5, 2022

Effective Date:

August 4, 2022

Issued By:

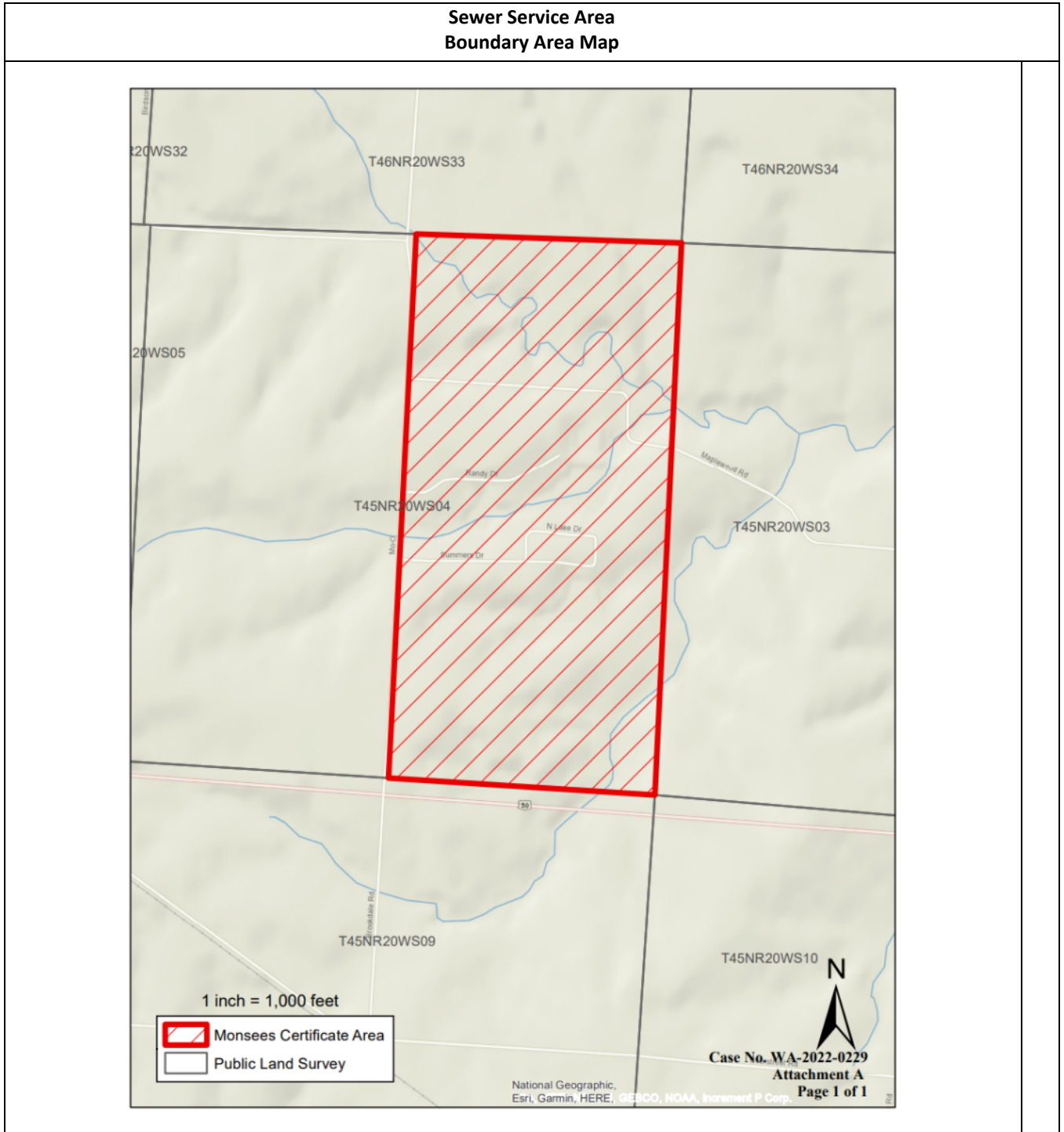
Rich C. Svindland, President  
727 Craig Road, St. Louis, MO 63141

**FILED**  
**Missouri Public**  
**Service Commission**  
**WA-2021-0376; YS-2023-0007**

Missouri-American Water Company  
Name of Issuing Corporation

For

Monsees Lake Estates  
Community, Town or City



\* *Indicates new rate or text*

+ *Indicates change*

Date of Issue: September 6, 2022      Effective Date: October 6, 2022

Issued By: Rich C. Svindland, President  
727 Craig Road, St. Louis, MO 63141

**FILED**  
Missouri Public  
Service Commission  
WA-2022-0229; YS-2023-0051

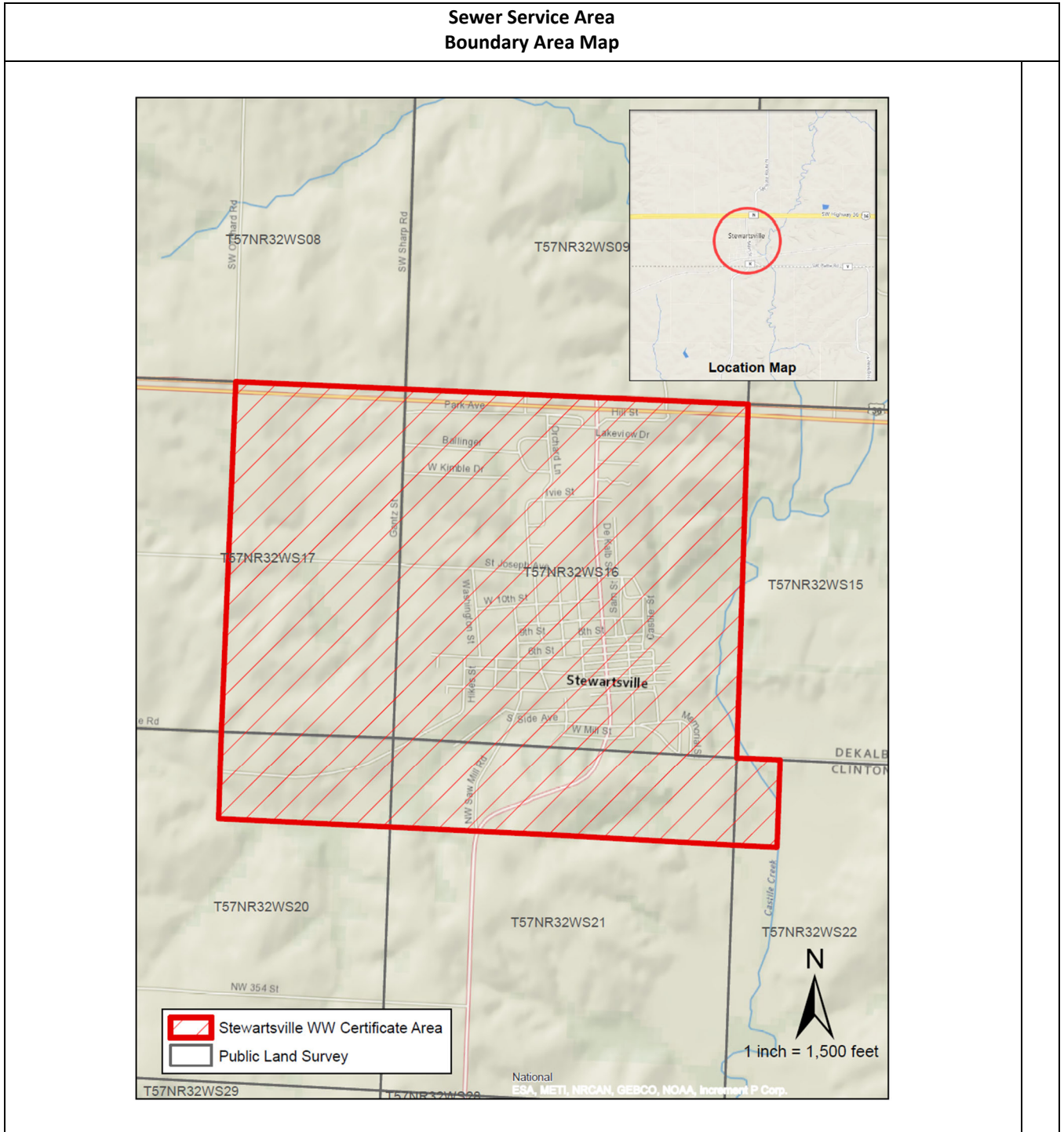




Missouri-American Water Company  
Name of Issuing Corporation

For

Stewartsville  
Community, Town or City



FILED - Missouri Public Service Commission - 02/11/2023 - WA-2022-0311 - YS-2023-0130

\* Indicates new rate or text

+ Indicates change

Date of Issue: January 17, 2023

Effective Date: ~~February 16, 2023~~  
**February 11, 2023**

Issued By: Rich C. Svindland, President  
727 Craig Road, St. Louis, MO 63141

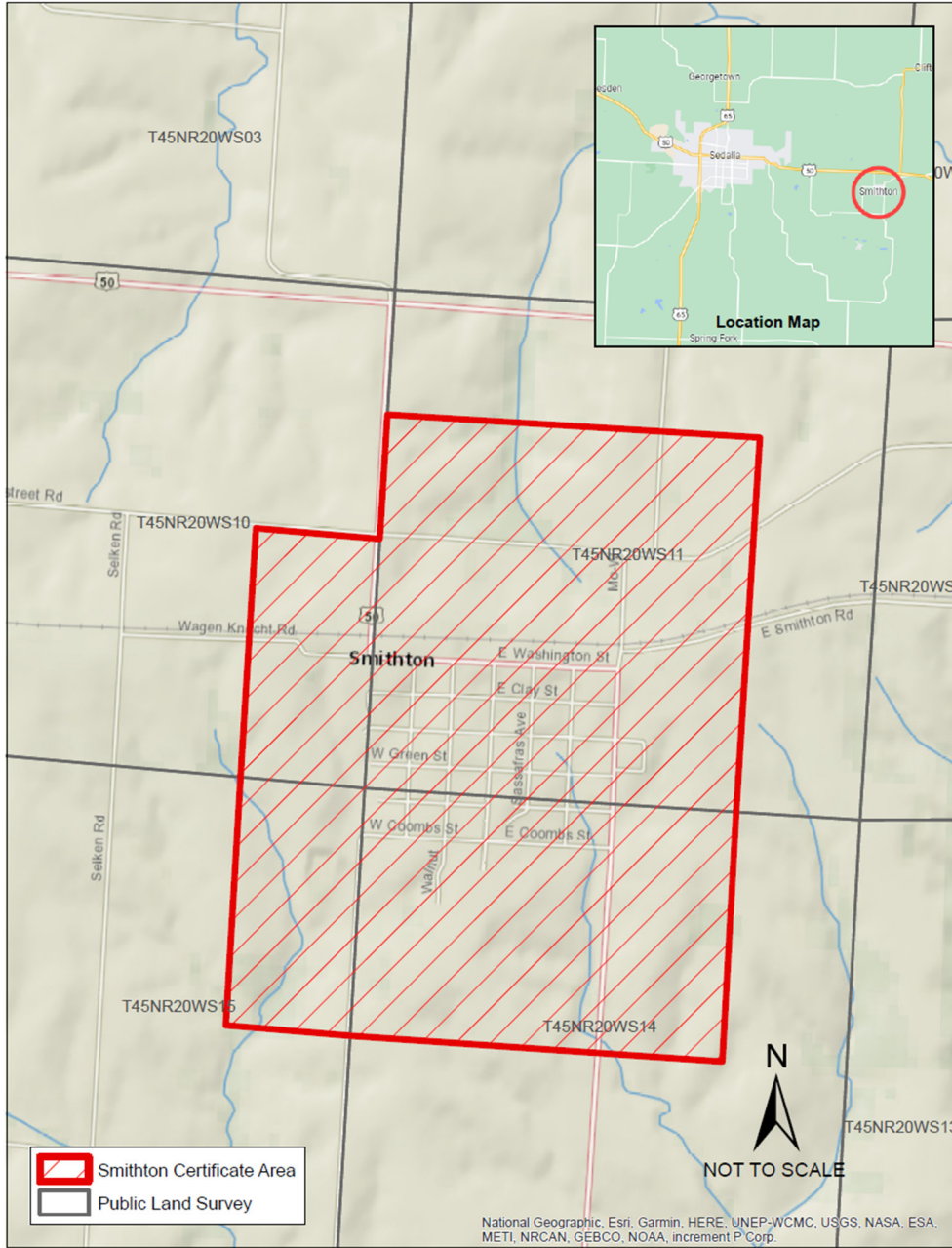


Missouri-American Water Company  
Name of Issuing Corporation

For

Smithton  
Community, Town or City

**Sewer Service Area  
Boundary Area Map**



FILED - Missouri Public Service Commission - 02/28/2023 - WA-2023-0071 - YS-2023-0150

\* Indicates new rate or text

+ Indicates change

Date of Issue: February 13, 2023

Effective Date: ~~March 15, 2023~~

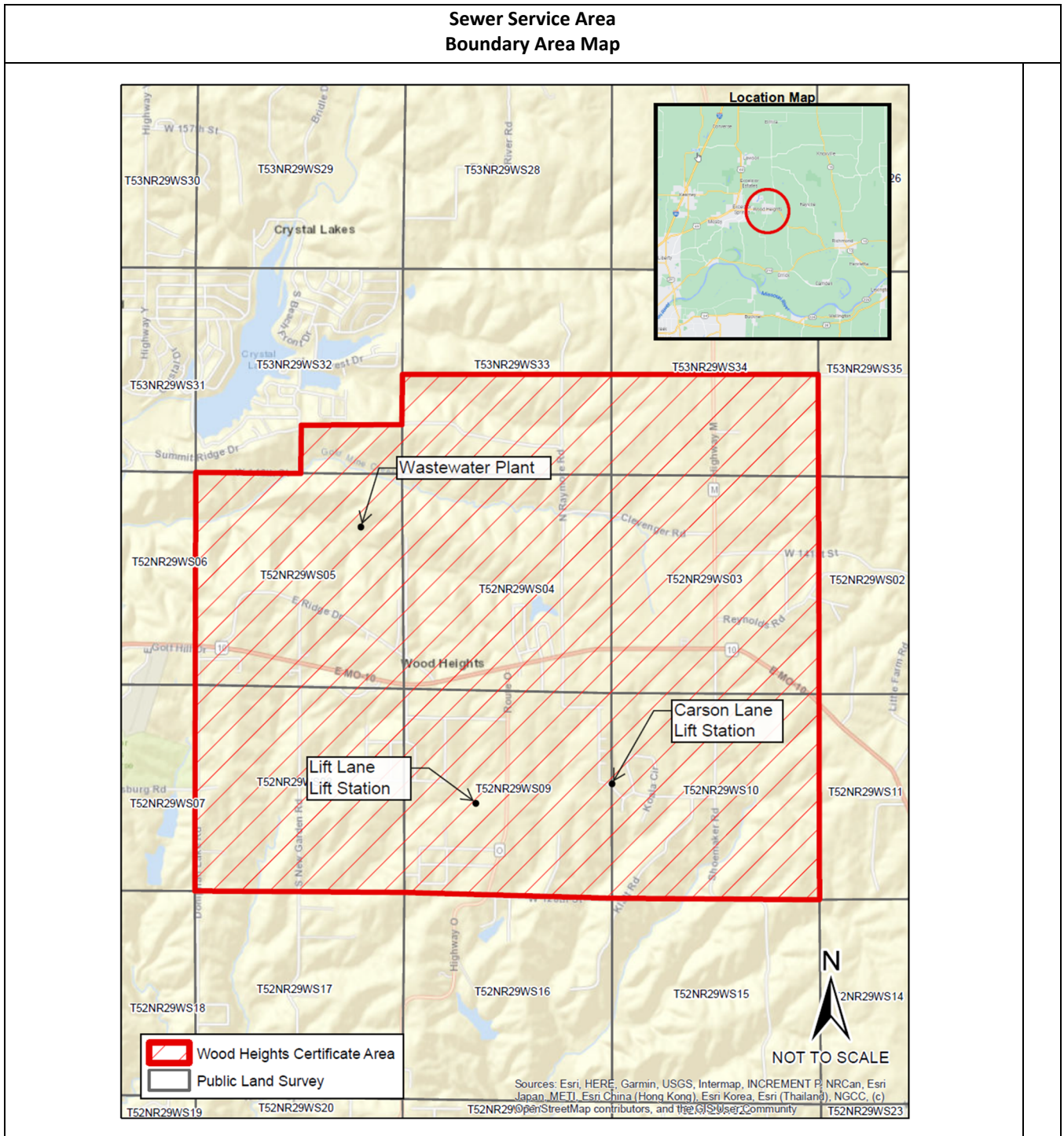
**February 28, 2023**

Issued By: Rich C. Svindland, President  
727 Craig Road, St. Louis, MO 63141

Missouri-American Water Company  
Name of Issuing Corporation

For

Wood Heights  
Community, Town or City



FILED - Missouri Public Service Commission - 07/14/2023 - WA-2023-0345 - YS-2023-0219

\* Indicates new rate or text

+ Indicates change

Date of Issue: June 14, 2023 Effective Date: July 14, 2023

Issued By: Rich C. Svindland, President  
727 Craig Road, St. Louis, MO 63141

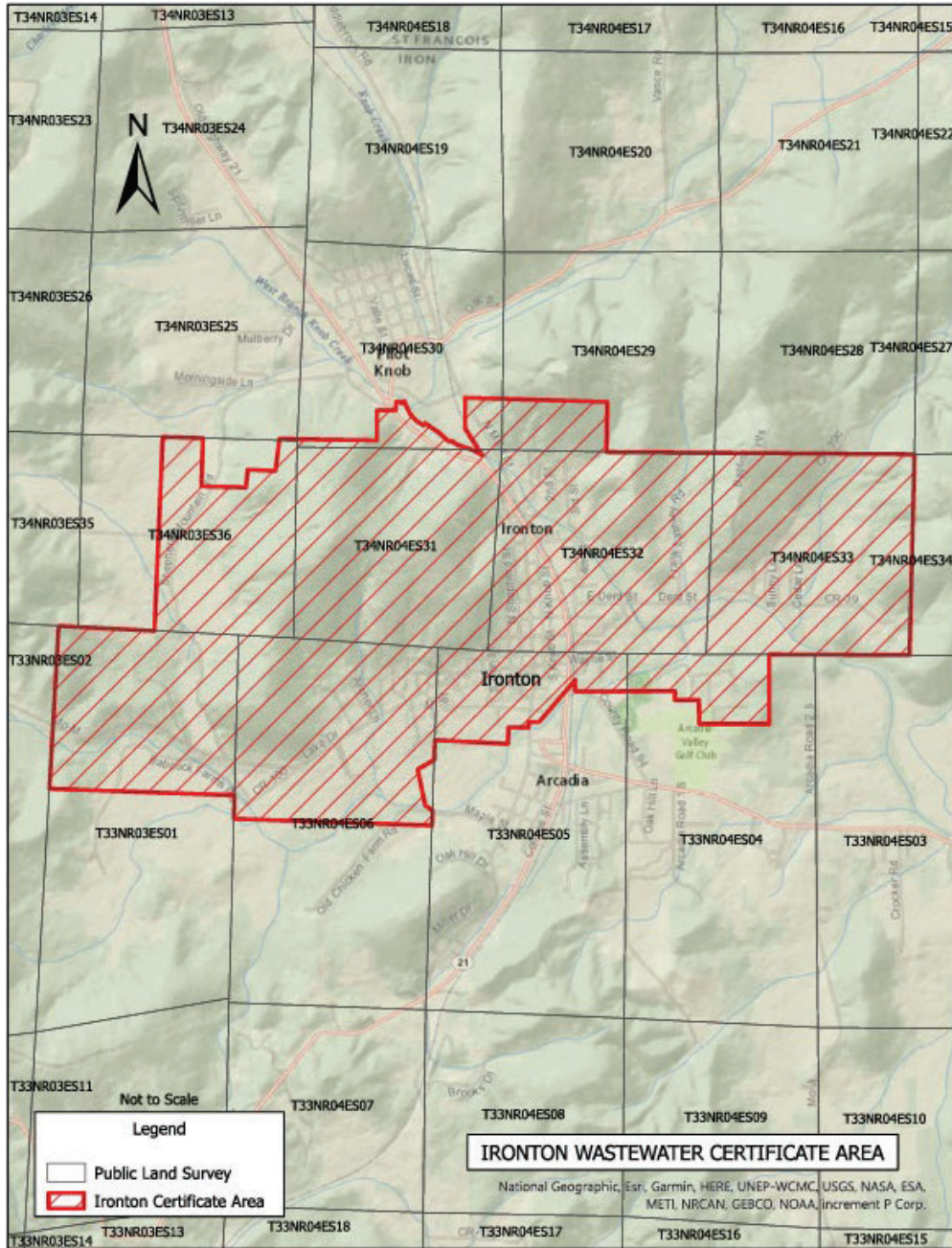


Missouri-American Water Company  
Name of Issuing Corporation

For

Ironton  
Community, Town or City

**Sewer Service Area  
Boundary Area Map**



FILED - Missouri Public Service Commission - 12/12/2023 - WA-2023-0434 - JS-2024-0068

\* Indicates new rate or text

+ Indicates change

Date of Issue: November 15, 2023      Effective Date: December 15, 2023  
December 12, 2023

Issued By: Rich C. Svindland, President  
727 Craig Road, St. Louis, MO 63141