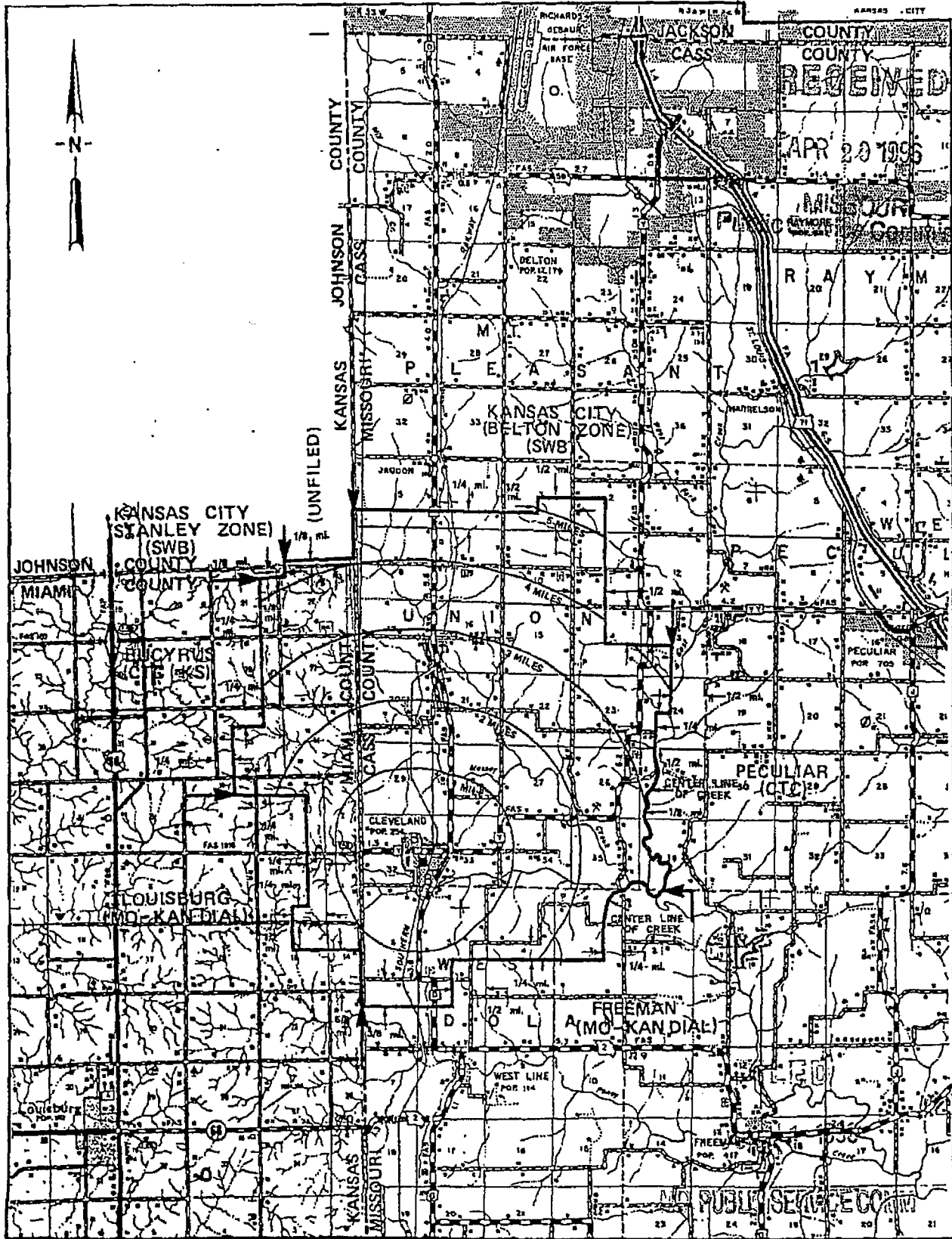


CLEVELAND EXCHANGE
CASS COUNTY, MISSOURI &
MIAMI COUNTY, KANSAS
EXCHANGE AREA MAP

PSC Mo. No. 1
Section 4
1st Revised Sheet 7
Cancelling Original Sheet 7



R25E | R33W

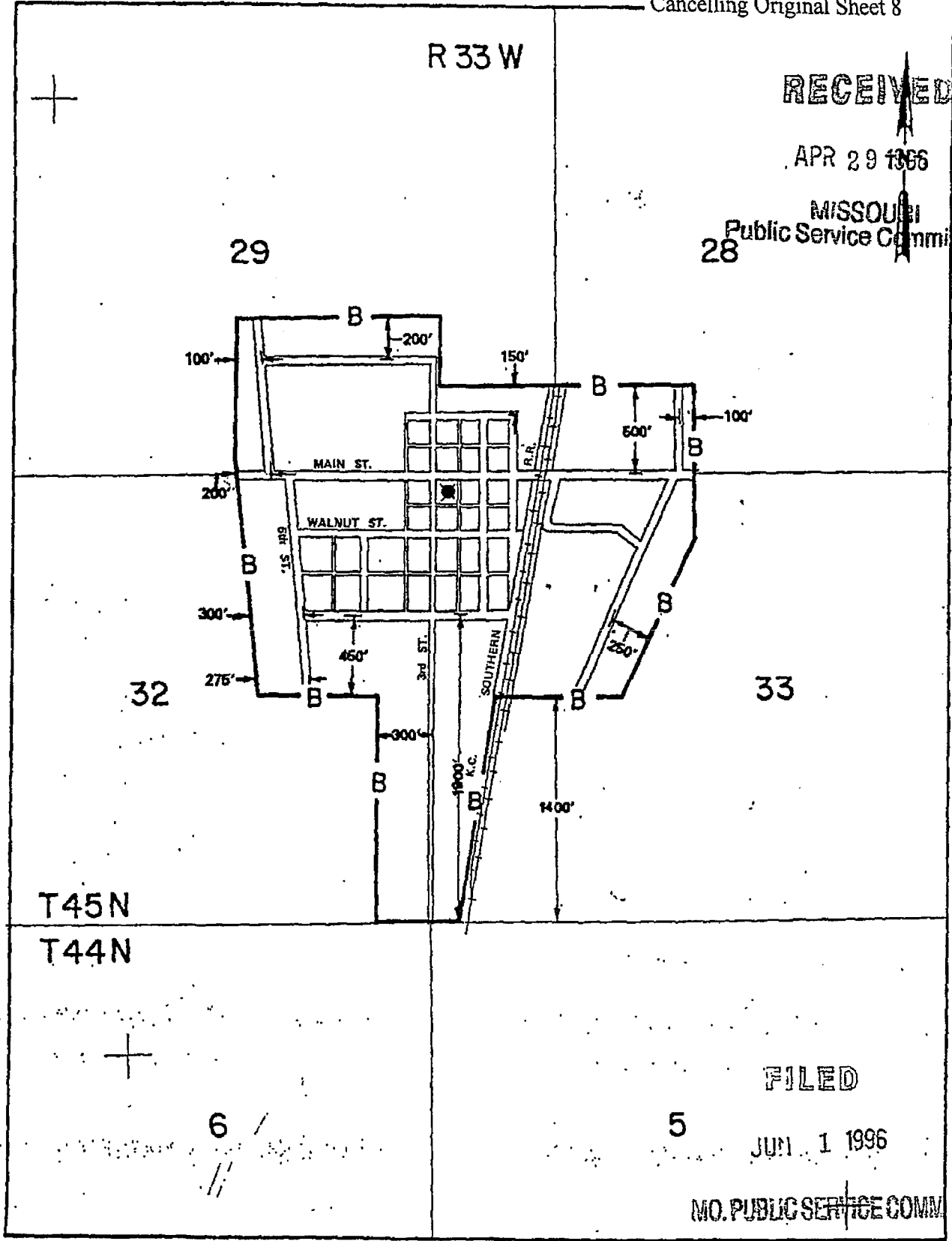
R33E | R32W

Issued: April 29, 1996

Kenneth M. Matzdorff
President
Peculiar, MO

Effective: June 1, 1996

Exhibit 16



RECEIVED

APR 29 1966

MISSOURI
Public Service Commission

33

FILED

JUN 1 1966

MO. PUBLIC SERVICE COMM.

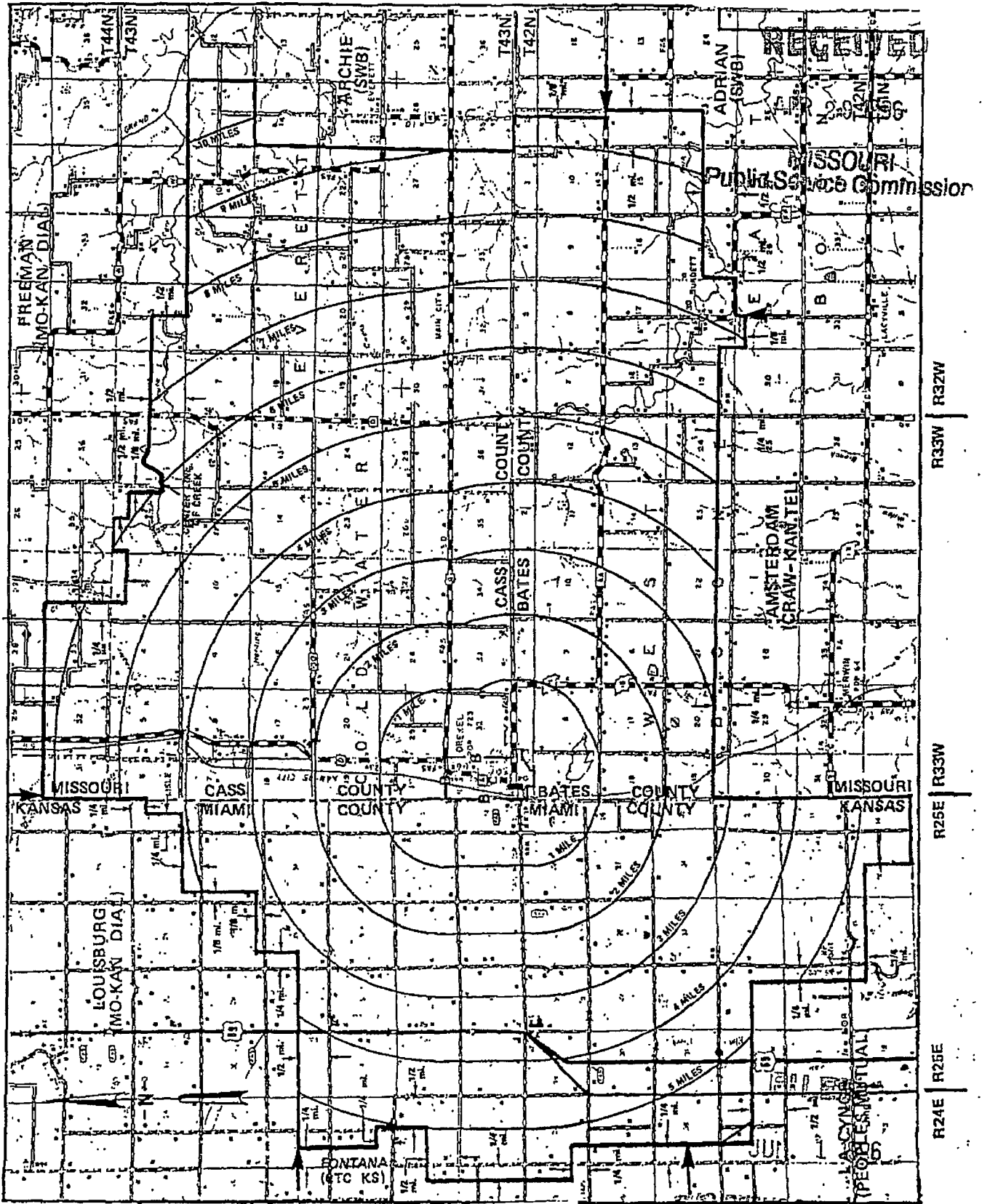
Issued: April 29, 1966

Kenneth M. Matzdorff
President
Peculiar, MO

Effective: June 1, 1966

Cass County Telephone Company
DREXEL EXCHANGE
CASS & BATES COUNTIES, MISSOURI
& MIAMI COUNTY, KANSAS
EXCHANGE AREA MAP

PSC Mo. No. 1
 Section 4
 1st Revised Sheet 11
 Cancelling Original Sheet 11



T17S
 T18S
 Kenneth M. Matzdorff
 President
 Peculiar, MO

T18S
 T19S
PUBLIC SERVICE COMPANY
 Effective: June 1, 1996

R 34 W R 33 W

30

29

RECEIVED

APR 29 1996

MISSOURI
Public Service Commission

N

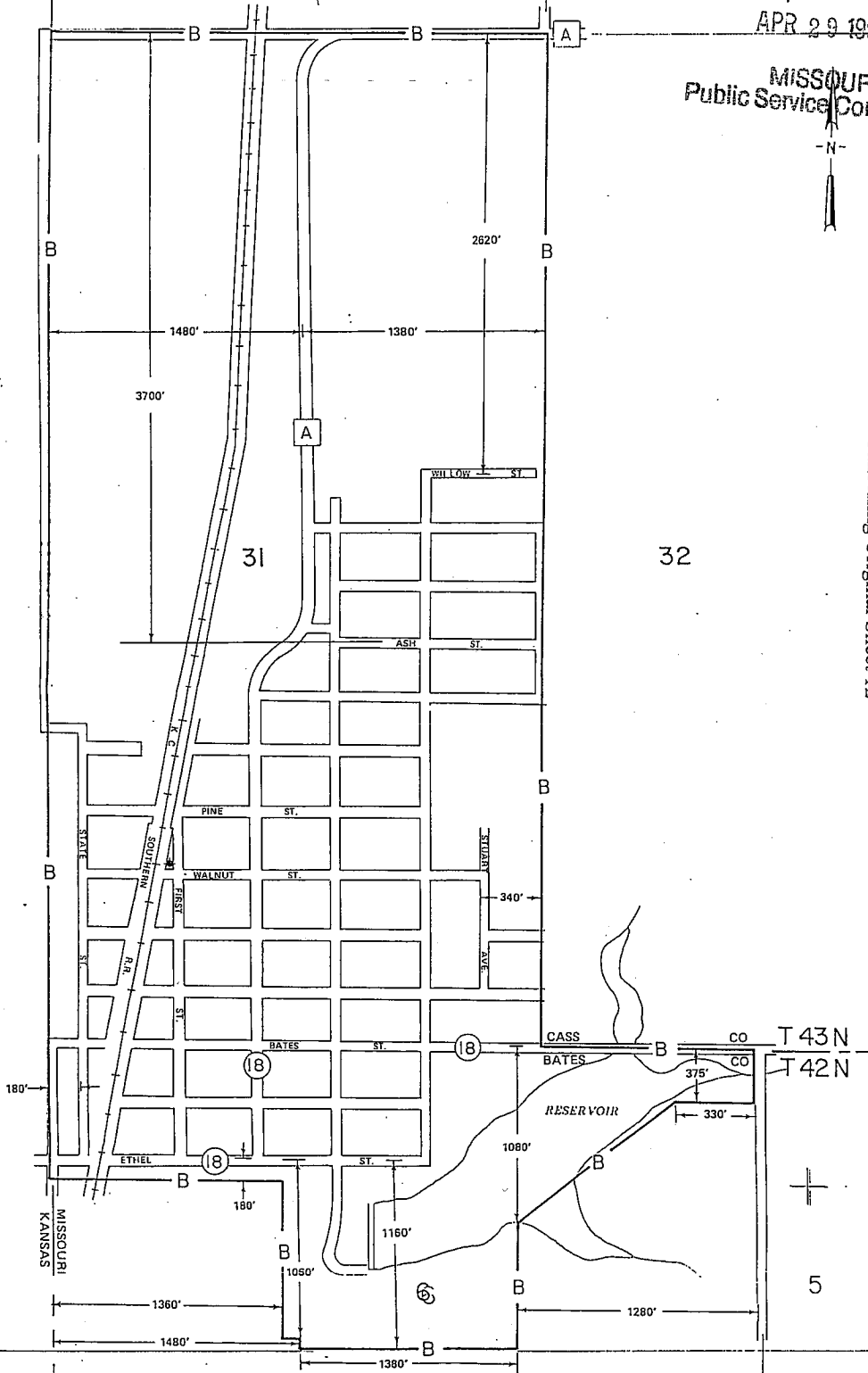
Cass County Telephone Company
DREXEL EXCHANGE
CASS & BATES COUNTIES
BASE RATE AREA MAP

PSC Mo. No. 1
Section 4
1st Revised Sheet 12
Cancelling Original Sheet 12

Issued April 29, 1996

Kenneth M. Matzdorff
President
Peculiar, MO

Effective: June 1, 1996



7

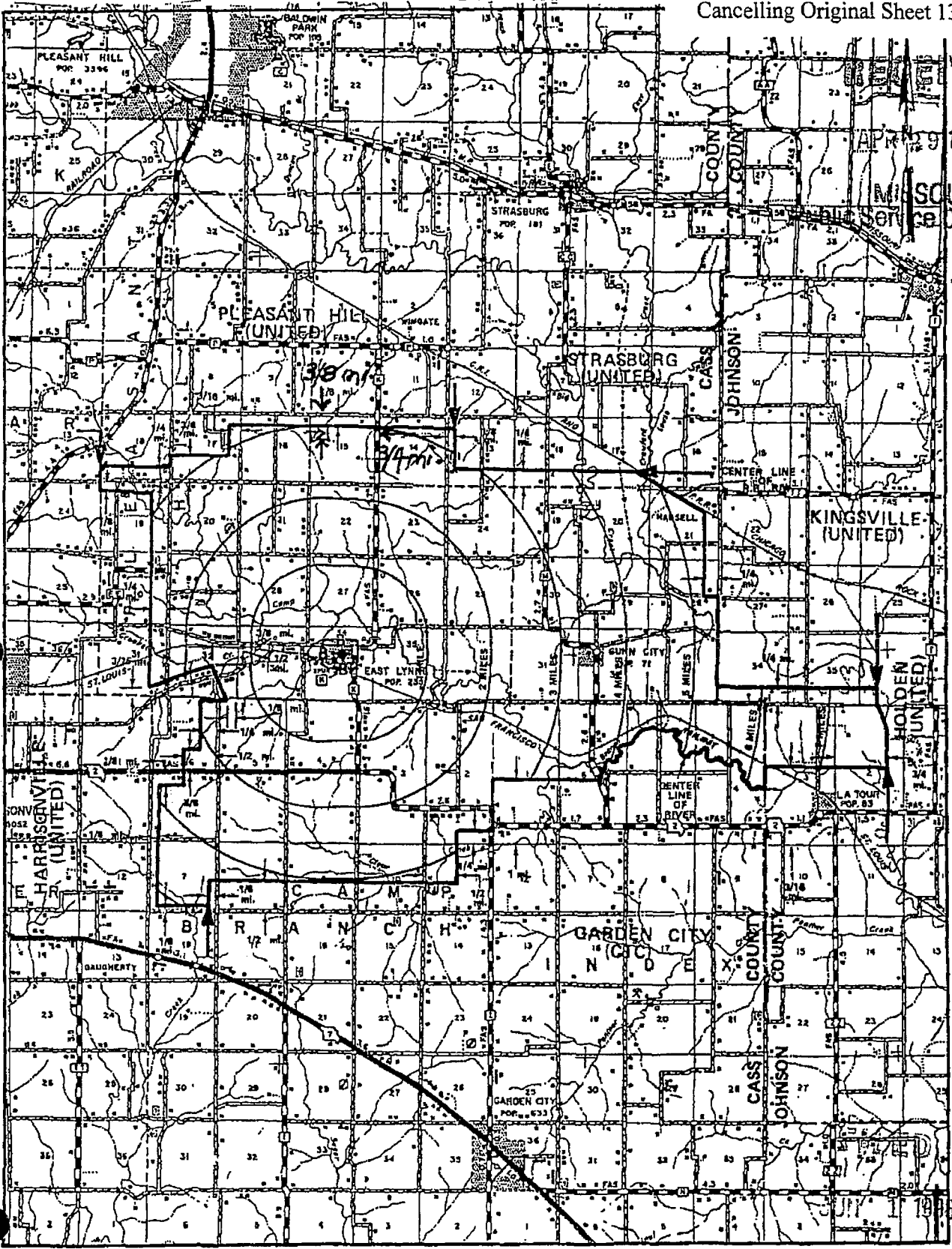
5

8

Cass County Telephone Company

EAST LYNNE EXCHANGE
CASS & JOHNSON COUNTIES
EXCHANGE AREA MAP

PSC Mo. No. 1
Section 4
1st Revised Sheet 13
Cancelling Original Sheet 13



RECEIVED

APR 29 1996

MISSOURI
Public Service Commission

T46N
T45N

T45N
T44N

T44N
T43N

R31W | R30W

R30W | R29W

MO. PUBLIC SERVICE COMM

Issued: April 29, 1996

Kenneth M. Matzdorff
President
Peculiar, MO

Effective: June 1, 1996

RECEIVED

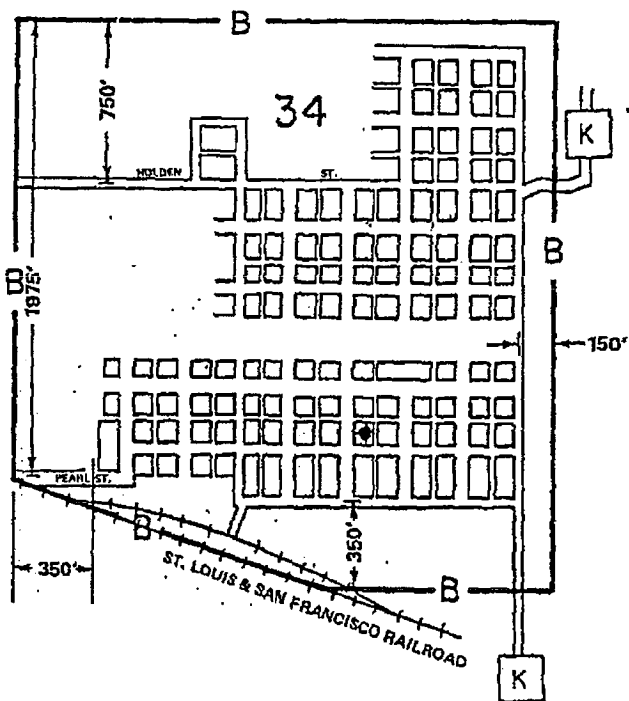
APR 29 1996

MISSOURI
Public Service Commission



R 30 W

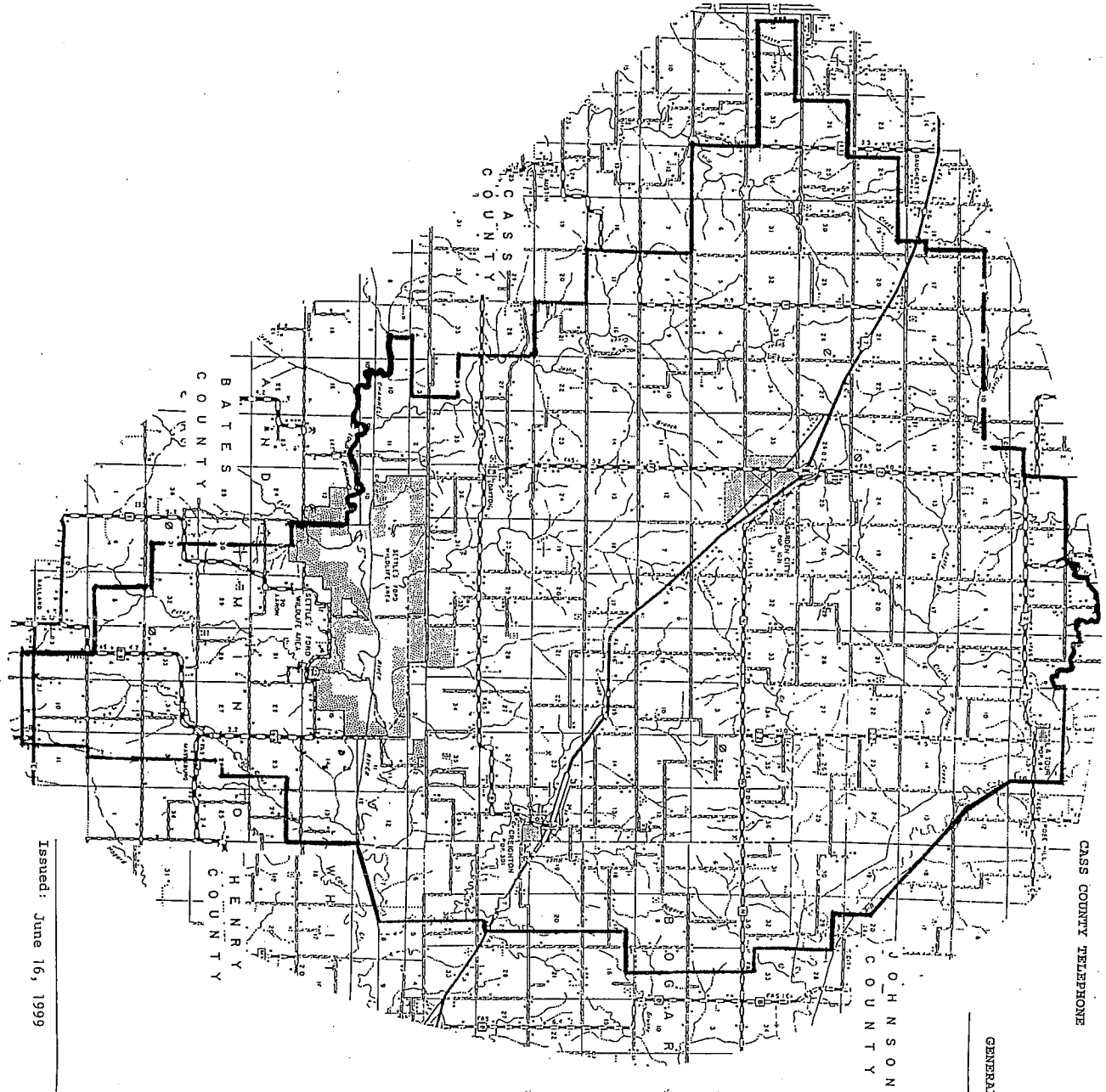
T 45 N



FILED

JUN 1 1996

MO. PUBLIC SERVICE COMM



CASS COUNTY TELEPHONE

GENERAL AND LOCAL EXCHANGE TARIFF

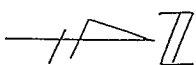
PSC NO. NO. 1
 Section 4
 2nd Revised Sheet 15
 Cancelling 1st Revised Sheet 15

MISSOURI PUBLIC SERVICE COMMISSION

RECEIVED
 JUN 16 1999

CASS COUNTY TELEPHONE COMPANY
 EXCHANGE BOUNDARY—GARDEN CITY/CREIGHTON

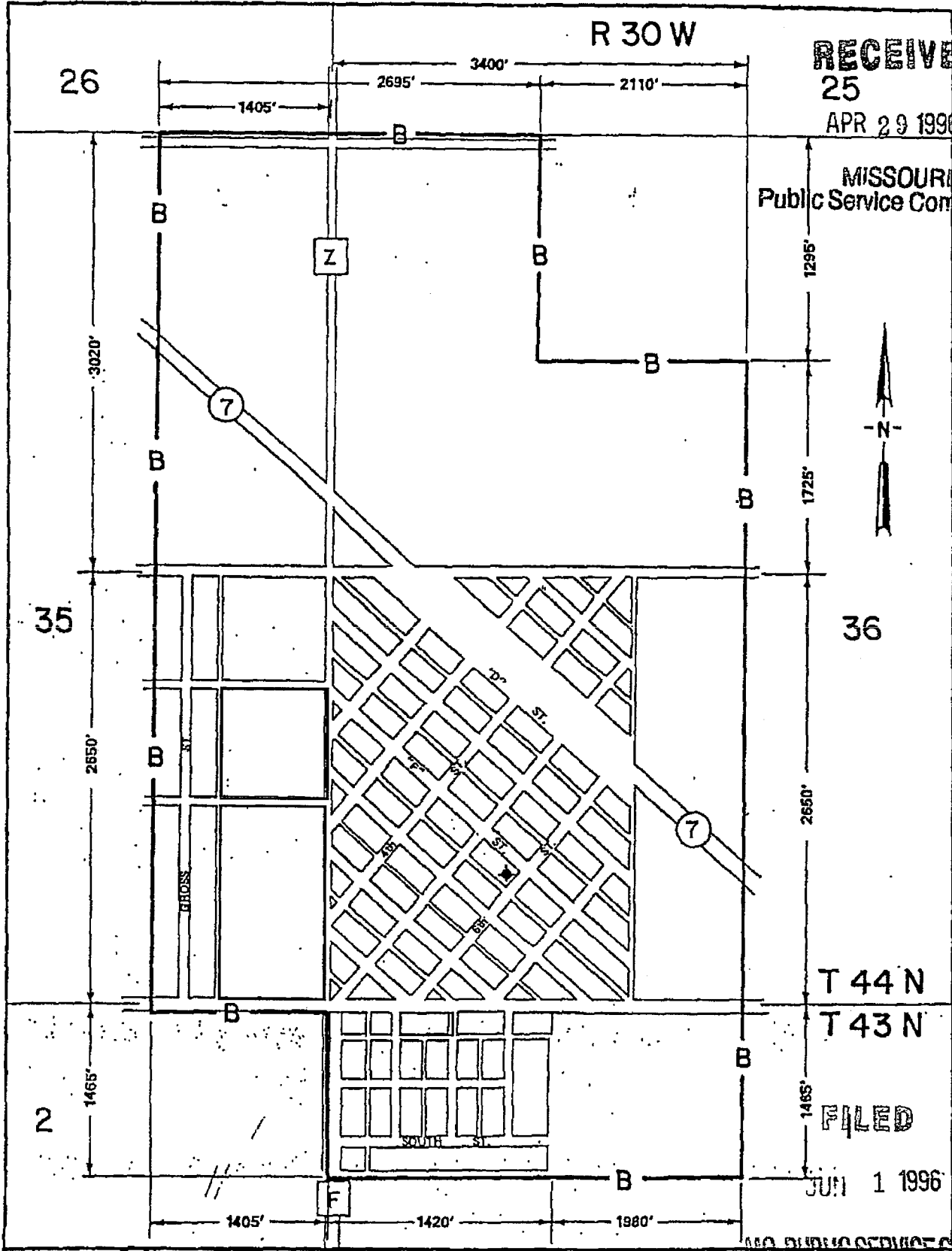
Missouri Public
 Service Commission
 FILED AUG 20 1999



Issued: June 16, 1999

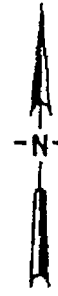
Effective: JULY 15 1999
 AUG 20 1999

Kenneth Matzdorff
 President
 Peculiar, Missouri



RECEIVED
25
APR 29 1996

MISSOURI
Public Service Commission



T 44 N
T 43 N

FILED
JUN 1 1996

MO. PUBLIC SERVICE COMMISSION

Issued: April 29, 1996

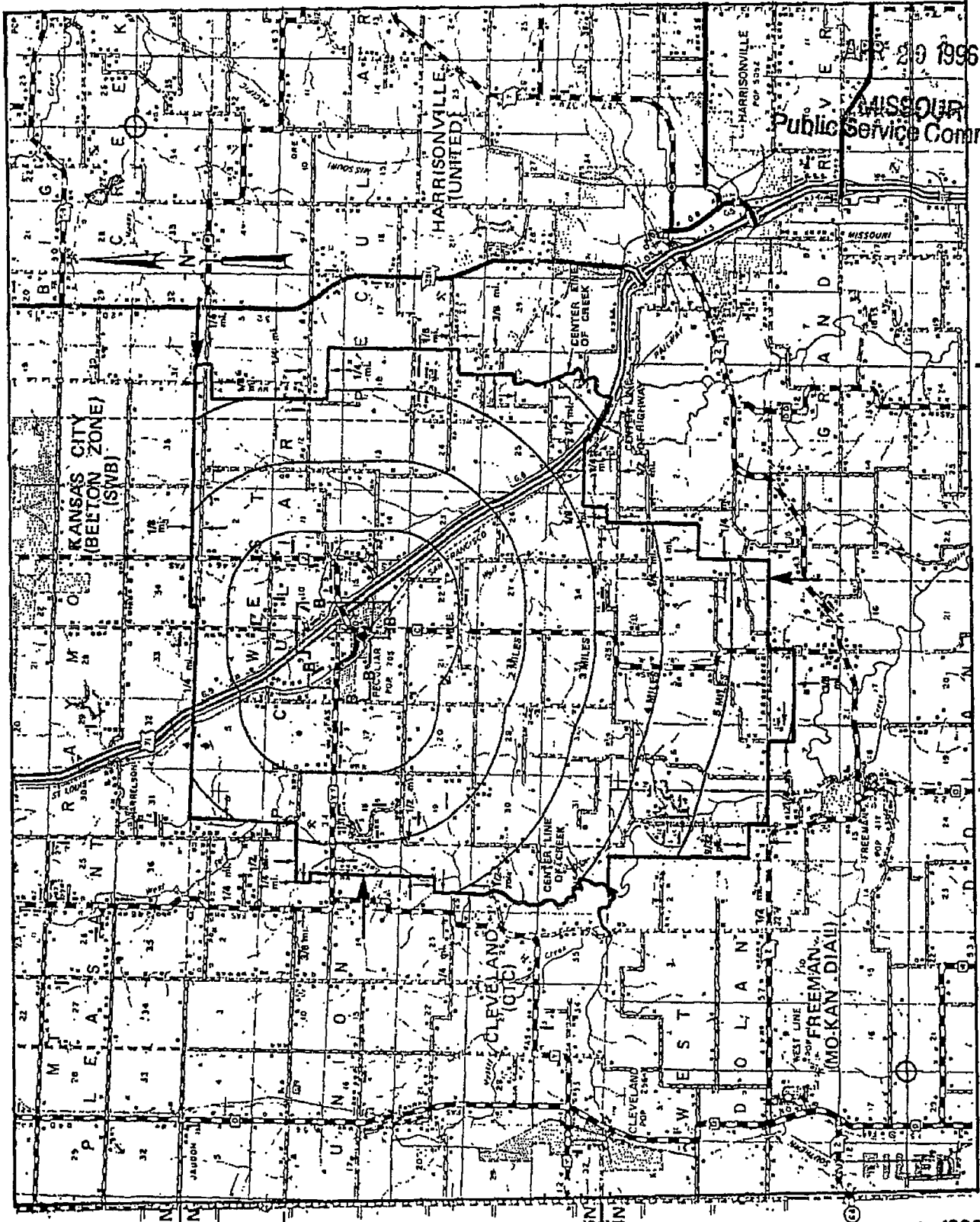
Kenneth M. Matzdorff
President
Peculiar, MO

Effective: June 1, 1996

RECEIVED

APR 29 1996

MISSOURI
Public Service Commission



OSNHOP T45N T45N A L N D O C T45N T44N

JUN 1 1996

Issued: April 29, 1996

Kenneth M. Matzdorff
President
Peculiar, MO

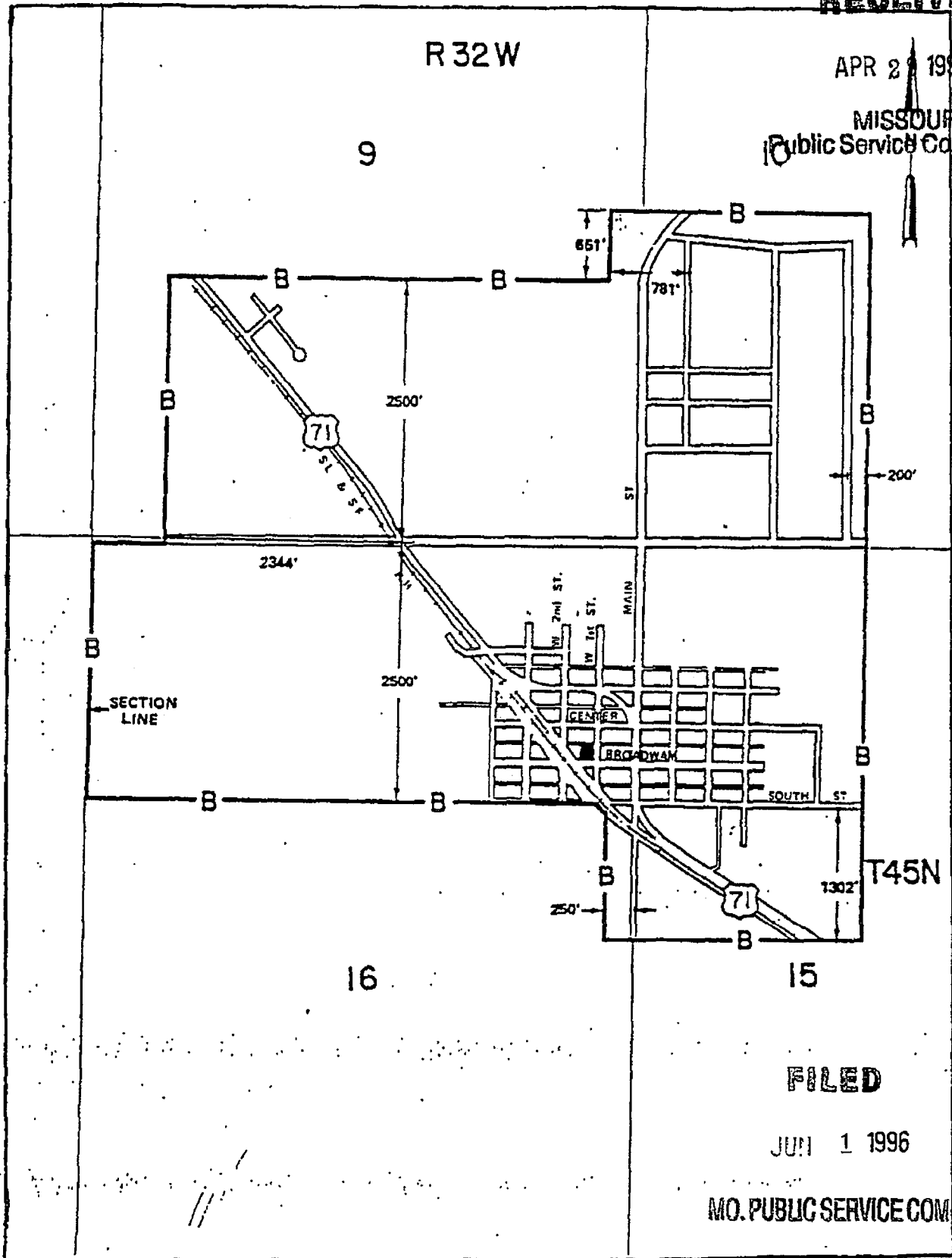
Effective: June 1, 1996

MO. PUBLIC SERVICE COMM

RECEIVED

APR 29 1996

MISSOURI
Public Service Commission



FILED

JUN 1 1996

MO. PUBLIC SERVICE COMM

Issued: April 29, 1996

Kenneth M. Matzdorff
President
Peculiar, MO

Effective: June 1, 1996