

EC-2024-0372

Complainants submit their Motion to Strike Staff report confidential exhibits A & B.

1) Attachment 1 is definitely a partial copy of the recertified letter that Ameren Missouri submitted to Staff for their report in which Ameren Missouri intentionally left out three specific pages.

2) Attachment 2. Again is an altered, forged, counterfeit document that resembles again <https://www2.ameren.com/Common/AccountActivity.aspx>

Attachment 2 is the user account dashboard for the account billing, in which doesn't specify actual daily kilowatt hour usage daily. Instead Ameren Missouri or labeled in Attachment 2, Ameren Missouri offers the total overall kilowatt hours used, instead of daily.

Under Commission's own rules set into policy. The utility provider itself is supposed to have those readily available for customers, for inquiry purposes. It's indented right in the Commission's rules, regulations and tariffs.

Attached by the Complainant is a copy of Landis+gyr's command center in which the provider should have had daily meter readings or kilowatt hour usage.

In addition all Ameren Missouri has to do is actually give a copy of the report in Command Center from Landis+gyr and it would give a detailed breakdown exhibited in this picture attached. In addition attached is all the features that are available from command center. In fact they offer daily reports and kilowatt usage.

In fact, this printout again, shows no vendor attachment or isn't offered by their own software vendor. All readouts and printouts offered in Landis+gyr are offered under letterhead and include the detail energy consumption breakdown daily.

Complainant would also like to ask a couple questions more importantly to Staff and Ameren Missouri prior to any requests.

Q. Please admit that Ameren Missouri failed to include the notarized document which included three other dispute pages to Staff of the Commission?

Q Please admit that Ameren Missouri's confidential attachment 2 is a counterfeit document, just like the payment agreement given to staff in EC-2023-0395 and fails to display any software vendor information or detailed daily usage of kilowatt hours used daily?

Please admit that Ameren Missouri's legal counsel and Regulatory Liasion
mass produced a counterfeit document and legal counsel instructed
Ameren's regulatory department to produce and craf a counterfeit energy
usage report and failed to include daily usage breakdowns of kilowatt hours
and isn't readily available.

Brett Felber
8/8/2024

A handwritten signature in black ink, appearing to be 'Brett Felber', written over the typed name and date. The signature is stylized and somewhat illegible due to overlapping lines.

Command Center



Overview

Command Center™ software is the gateway for all Gridstream® metering technologies and the control point for grid management network sensors. It's the critical link for opening access to valuable data for utility systems and directing actions which occur within the distributed intelligence residing at the network's edge.

Command Center brings data from any communication technology—including RF Mesh, PLC and cellular; and for any commodity such as electricity, natural gas and water—into a single application. Command Center's innovative platform is designed for growth and extensibility to ensure a future ready solution for our customers.

OPERATIONS SUPPORT COMMAND CENTER INTELLIGENCE PERFORMS FUNCTIONS INCLUDING:

- Remote endpoint programming
- Time-of-use period and rate configuration
- Basic validation and exception management
- Billing extract generation
- Remote disconnect management
- Critical peak usage analysis

OPERATIONAL PROCESSES SUPPORTED INCLUDES:

- Load control index creation
- Billing support and exception reports
- On-demand device command and control
- System mapping and real-time awareness
- Network management analytics and statistics
- Demand response management of devices
- Voltage monitoring

FEATURES & BENEFITS: WHY LANDIS+GYR MAKES A DIFFERENCE

- Robust management of the AMI system
- Network management analytics and statistics
- Validation, storage and presentation of collected data
- Seamless integration to other utility applications
- Monitoring and alerting of standard and -user-configurable conditions
- In-depth analysis and reporting monitoring systems

INNOVATIVE, FLEXIBLE & SECURE

- Modular Software Architecture & deployment
- Market-leading security implementation
- Proven scalability to support the world's largest utilities
- Integration based on Service Oriented Architecture



**ROBUST MANAGEMENT
OF THE AMI SYSTEM**



**SEAMLESS INTEGRATION
TO OTHER
UTILITY APPLICATIONS**



**INNOVATIVE,
FLEXIBLE & SECURE**

Command Center

PLATFORM INTEGRATION AND STANDARDS LEADERSHIP

As a MultiSpeak® and IEC 61968-9 (CIM) compliant solution, Command Center provides unparalleled integration capabilities.

Command Center's standards-based design, combined with an extensive web service library of more than 100 pre-built interfaces, makes it ready to use right from the start. The fact is Landis+Gyr's proven integration solutions empower hundreds of utilities to integrate their advanced metering and grid management solutions with back-office applications. And with unparalleled industry-leading vendor partnerships and dedicated integration teams, Landis+Gyr provides the key to integration success.

In addition to real-time application interfaces, Command Center delivers pre-built, yet flexible data extracts, in formats readily supported by adjacent systems. Every byte of processed data is available for use.

Fully integrated with Landis+Gyr MDMS, and interoperable with systems including billing, customer service, engineering analysis, outage management, demand response, load management and field service applications, Command Center enhances productivity and delivers unmatched energy resource management and collaboration.

SYSTEM REQUIREMENT

Command Center is engineered to simultaneously process and validate meter readings for millions of devices quickly and efficiently. It can be configured as a stand-alone solution on a single server platform or scaled to a multiple-server platform. In addition, it can operate in either a Microsoft or Unix environment supporting a Microsoft SQL or Oracle database platform. Command Center hosting and management is also offered as a service with Landis+Gyr Cloud Services.

LANDIS+GYR SMART GRID SERVICES AND CUSTOMER SUPPORT

When you partner with Landis+Gyr and deploy an AMI system powered by Command Center, you'll have access to support and services expertise unequaled in the industry. You can rely on our technical support 24/7/365 with each Command Center installation. The Landis+Gyr Smart Grid Services team delivers unrivaled expertise and leverages decades of in-the-field experience to maximize the value of your investment and ensure business objectives are met.

NETWORK MONITORING AND MANAGEMENT FEATURES

- Administrative dashboards
- Exception reporting
- Reading collection statistics
- Mapping
- Network management
 - Message communication statistics
 - Device latency statistics
 - Collector capacity
- Command, error and event tracking and reporting
- Interfaces available for data delivery to industry network monitoring systems

GET IN TOUCH.

For more information and nationwide warranty terms, visit us at landisgyr.com or call us at 888-390-5733.

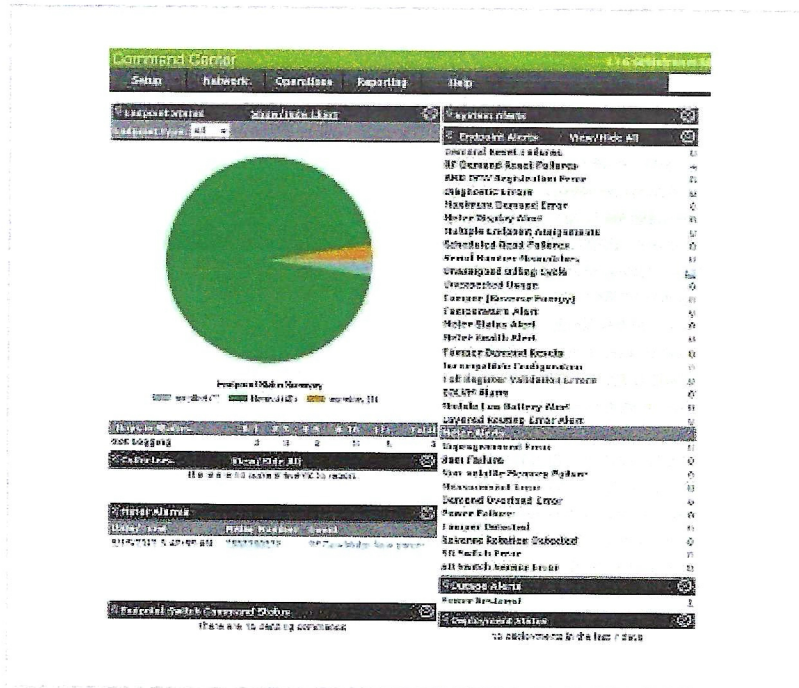


LET'S BUILD A BRIGHTER FUTURE TOGETHER

Since 1896, Landis+Gyr has been a global leader of energy management solutions. We've provided more than 3,500 utility companies all over the world with the broadest portfolio of products and services in the industry. With a worldwide team of 1,300+ engineers and research professionals, as well as an ISO certification for quality and environmental processes, we are committed to improving energy efficiency, streamlining operations, and improving customer service for utility providers.

AVAILABILITY

Americas



Command Center

Command Center is the browser-based operating software for managing the network and devices across the Gridstream Connect IoT platform. It installs seamlessly, or can run on hosted servers, and provides a secure platform for data and system management throughout the utility. Reports are tailored for use by billing, finance, customer service, operations, distribution planning, and... Read more



View features

Contact Us (<https://www.landisgyr.com/contact/>)

Description:

Command Center is the browser-based operating software for managing the network and devices across the Gridstream Connect IoT platform. It installs seamlessly, or can run on hosted servers, and provides a secure platform for data and system management throughout the utility. Reports are tailored for use by billing, finance, customer service, operations, distribution planning, and engineering departments. Multiple integration partners and cross-platform functionality ensure Command Center will integrate into the entire business.

Features

Documents

FEATURES

Key features include:

- Support for multiple applications, including AMI and personal energy management
- Reliability indices reporting capabilities
- Power interruption reporting
- System diagnostics
- Remote programming of time-based billing structures
- Tamper detection
- Available hosting service reduces demands on utility staff