

**BEFORE THE PUBLIC SERVICE COMMISSION  
OF THE STATE OF MISSOURI**

In the Matter of the Application of Union Electric )  
Company d/b/a Ameren Missouri for a Certificate )  
of Convenience and Necessity to Construct, Own, ) File No. EA-2025-0028  
Operate and Maintain a Transmission Substation in )  
Cooper County, Missouri. )

**AFFIDAVIT**

1. My name is Chris Korsmeyer. I am the Senior Real Estate Agent for Ameren Services Company, which is a subsidiary of Ameren Corporation and an affiliate of Union Electric Company d/b/a Ameren Missouri, the Applicant in the above-captioned matter.

2. On September 23, 2024, Ameren Missouri mailed notice of its application in this proceeding to all owners of land, or their designee, as stated in the records of the applicable county assessor's office as of September 18, 2024, who would be directly affected by the New Facilities described in Ameren Missouri's application for a CCN, as required by 20 CSR 4240-20.045(6)(K)(1) and (2).

3. True and accurate copies of Ameren Missouri's form notice letters are attached and included as Attachment A and Attachment B to this Affidavit. Two forms of notice were sent – one to landowners with habitable structures located within 300 feet of a planned transmission line, and a second form was sent to a landowner from whom a permanent easement will be sought to facilitate the new transmission lines.

4. A CONFIDENTIAL list of all directly affected landowners, as that term is defined by 20 CSR 4240-20.045(6)(K)(1), to whom Ameren Missouri sent the above referenced notice is provided on page 3 of this Affidavit.

5. I am authorized to make this statement on behalf of Ameren Missouri.

6. Under penalty of perjury, I declare that the foregoing is true and correct to the best of my knowledge and belief.

A handwritten signature in cursive script that reads "Chris Korsmeyer". The signature is written in black ink and is positioned above a horizontal line.

Chris Korsmeyer  
Senior Real Estate Agent  
Ameren Services Company

Date: October 08, 2024

**EA-2025-0028**

**Page 3 of Appendix 3  
is Confidential in its  
Entirety**



1901 Chouteau Avenue  
PO Box 66149  
St. Louis, MO 63166-6149  
Ameren.com

DATE

NAME  
ADDRESS  
ADDRESS  
CITY, STATE, ZIP

RE: Notice of Application – Union Electric Company d/b/a Ameren Missouri, Cooper Substation and Associated Transmission Lines

Dear \_\_\_\_\_,

Ameren Missouri recognizes the importance of keeping stakeholders informed about projects that may affect them. You are receiving this letter because public records show that you own property adjacent to the route of a new or relocated transmission line that Ameren Missouri is planning to build.

Specifically, those records show that you own property just west of what will be a short transmission line that will run from south to north. Public records also show that one of these new or relocated transmission lines may fall within 300 feet of habitable structure(s) located on your property. These transmission lines will be part and parcel with a new transmission substation (the "Cooper Substation"). Attached for your review is a project map illustrating the expected location of the new transmission lines as well as the Cooper Substation.

In the coming days, Ameren Missouri will submit an application to the Missouri Public Service Commission (PSC) for a Certificate of Convenience and Necessity. The expected timing for a PSC decision is the first half of 2025.

If approved by the PSC, this transmission line will be built on land that Ameren Missouri currently owns, located just east of your property. Construction is expected to begin shortly after Ameren Missouri obtains a Certificate of Convenience and Necessity (second quarter of 2025). Ameren Missouri's goal is to have these new transmission lines, as well as the new Cooper Substation, in service by Dec. 1, 2027.

The goal of this new substation and ancillary transmission lines is to improve local and regional energy reliability and promote access to diverse energy resources.

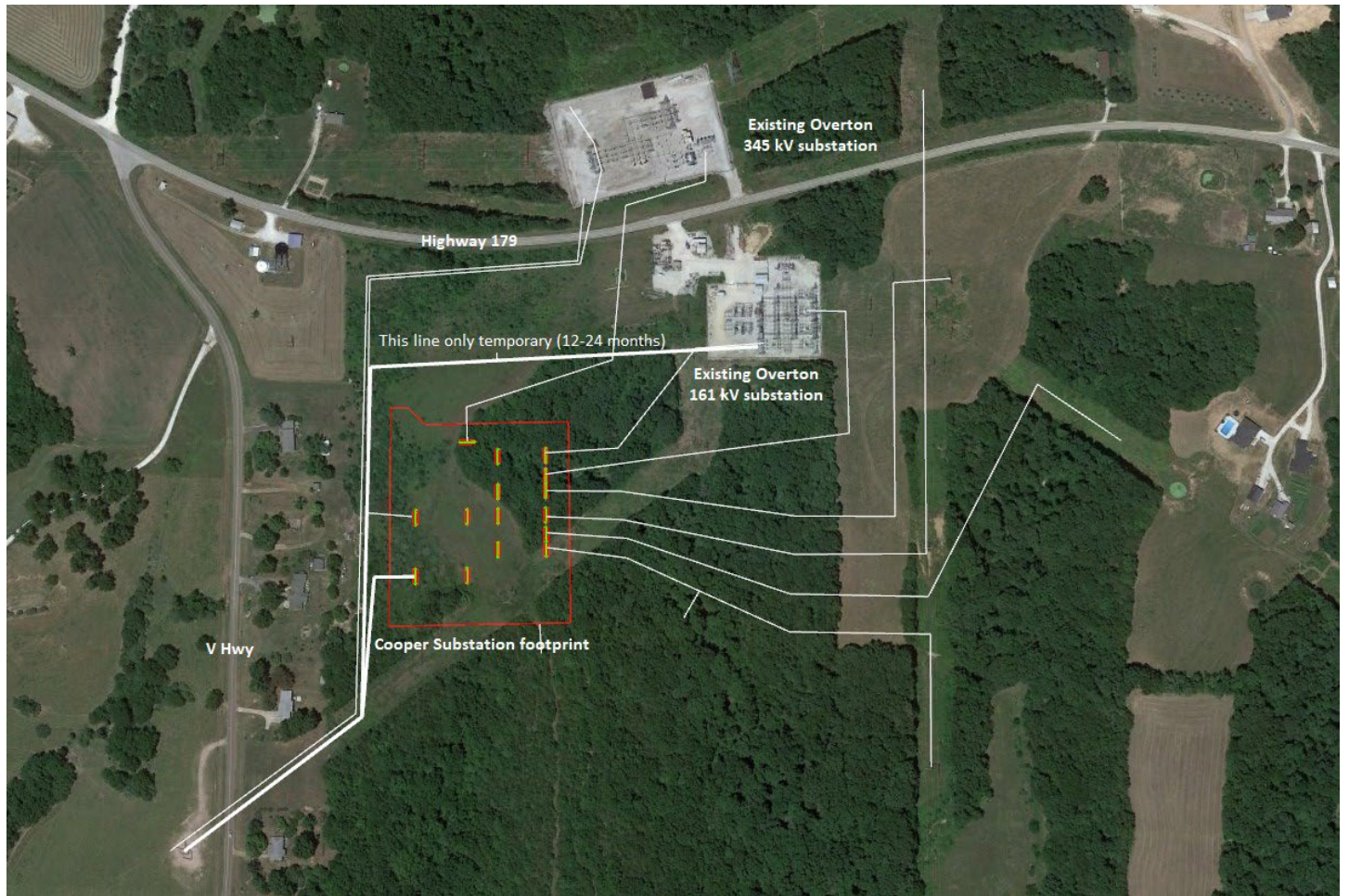
Should you have questions about the proposed transmission lines or if you would like to share additional information, please contact the project team by telephone at 314-278-8697 or by email at [SGardner2@ameren.com](mailto:SGardner2@ameren.com) . If you have questions for the Missouri Public Service Commission Staff please call 573-751-3234 or email [pscinfo@psc.mo.gov](mailto:pscinfo@psc.mo.gov), or for the Office of Public Counsel, please call 573-751-4857 or email [mopco@opc.mo.gov](mailto:mopco@opc.mo.gov) .

Public collaboration remains a top priority for our team and we appreciate your participation throughout our engagement process. Thank you for your time and feedback as we develop this important program to ensure safe, reliable and affordable energy for Central Missouri.

Sincerely,

Samuel F. Gardner  
Project Manager II  
Ameren Services Company as agent for  
Ameren Missouri

**FIGURE 1 – PLAN VIEW OF ANTICIPATED TRANSMISSION LINES  
AND COOPER SUBSTATION**





1901 Chouteau Avenue  
PO Box 66149  
St. Louis, MO 63166-6149  
Ameren.com

DATE

NAME  
ADDRESS  
ADDRESS  
CITY, STATE, ZIP

RE: Notice of Application – Union Electric Company d/b/a Ameren Missouri, Cooper Substation and Associated Transmission Lines

Dear \_\_\_\_\_,

Ameren Missouri recognizes the importance of keeping stakeholders informed about projects that may affect them. You are receiving this letter because public records show that you own property along the route of new transmission lines that Ameren Missouri is proposing to develop as part of an upcoming transmission substation project (the "Cooper Substation").

Attached for your review is a project map illustrating the expected locations of the new or re-routed transmission lines as well as the Cooper Substation (see Figure 1 below). Much of the land in Figure 1 is owned by Ameren Missouri. Some of the land in the eastern portion of Figure 1 is owned by others, including you, and Ameren Missouri seeks to obtain 100 ft-wide easements (50 ft from the center of the transmission line) over some of this land in order to facilitate some of the transmission lines shown in Figure 1. Aerial illustrations of the transmission lines that necessitate easements are shown in Figures 2 through 6. In Figures 2 through 5, the portions outlined in yellow represent the approximate locations of new easements that Ameren Missouri will seek to obtain. For Figure 6, the top polygon outlined in yellow illustrates Ameren Missouri's existing easement. The bottom polygon in Figure 6 represents the expansion of the existing easement that will be necessary.

In the coming days, Ameren Missouri will submit an application to the Missouri Public Service Commission (PSC) for a Certificate of Convenience and Necessity. The expected timing for a PSC decision is the first half of 2025.

If approved by the PSC, construction of the Cooper Substation and associated transmission lines is expected to begin shortly after Ameren Missouri obtains a Certificate of Convenience and Necessity (second quarter of 2025). Ameren Missouri's goal is to have these new transmission lines, as well as the new Cooper Substation, in service by Dec. 1, 2027. The goal of this new substation and ancillary transmission lines is to improve local and regional energy reliability and promote access to diverse energy resources.

Should you have questions about the proposed transmission line or if you would like to share additional information, please contact the project team by telephone at 314-278-8697 or by email at [SGardner2@ameren.com](mailto:SGardner2@ameren.com) . If you have questions for the Missouri Public Service Commission Staff please call 573-751-3234 or email [pscinfo@psc.mo.gov](mailto:pscinfo@psc.mo.gov), or for the Office of Public Counsel, please call 573-751-4857 or email [mopco@opc.mo.gov](mailto:mopco@opc.mo.gov) .

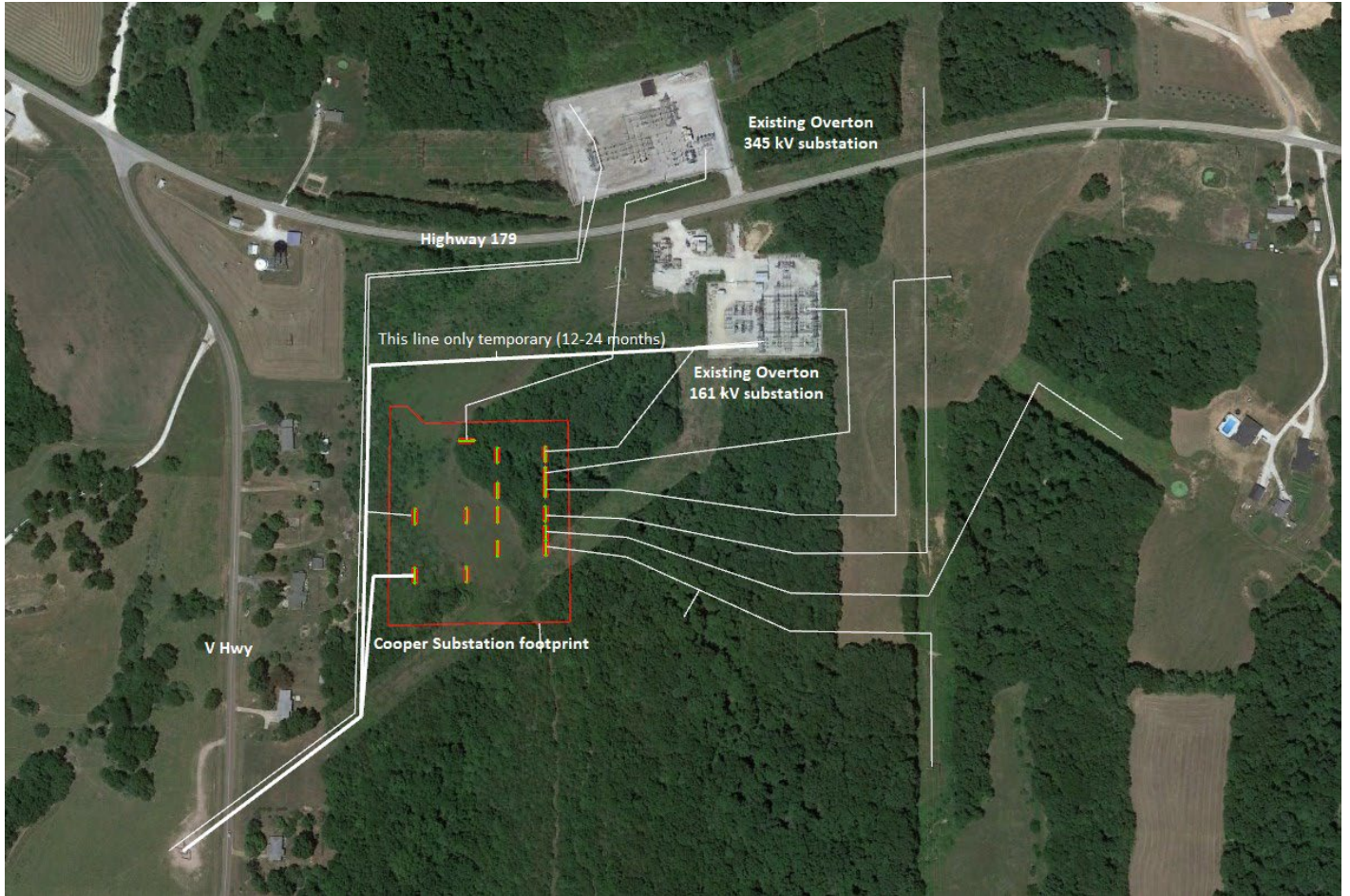
Public collaboration remains a top priority for our team and we appreciate your participation throughout our engagement process. Thank you for your time and feedback as we develop this important program to ensure safe, reliable and affordable energy for Central Missouri.

Sincerely,

Samuel F. Gardner  
Project Manager II  
Ameren Services Company as agent for  
Ameren Missouri



**FIGURE 1 – PLAN VIEW OF ANTICIPATED TRANSMISSION LINES  
AND COOPER SUBSTATION**



**FIGURE 2 – PLAN VIEW OF EASEMENT NEEDED FOR COOPER – CALIFORNIA 161kV**  
(anticipated easement outlined in yellow)



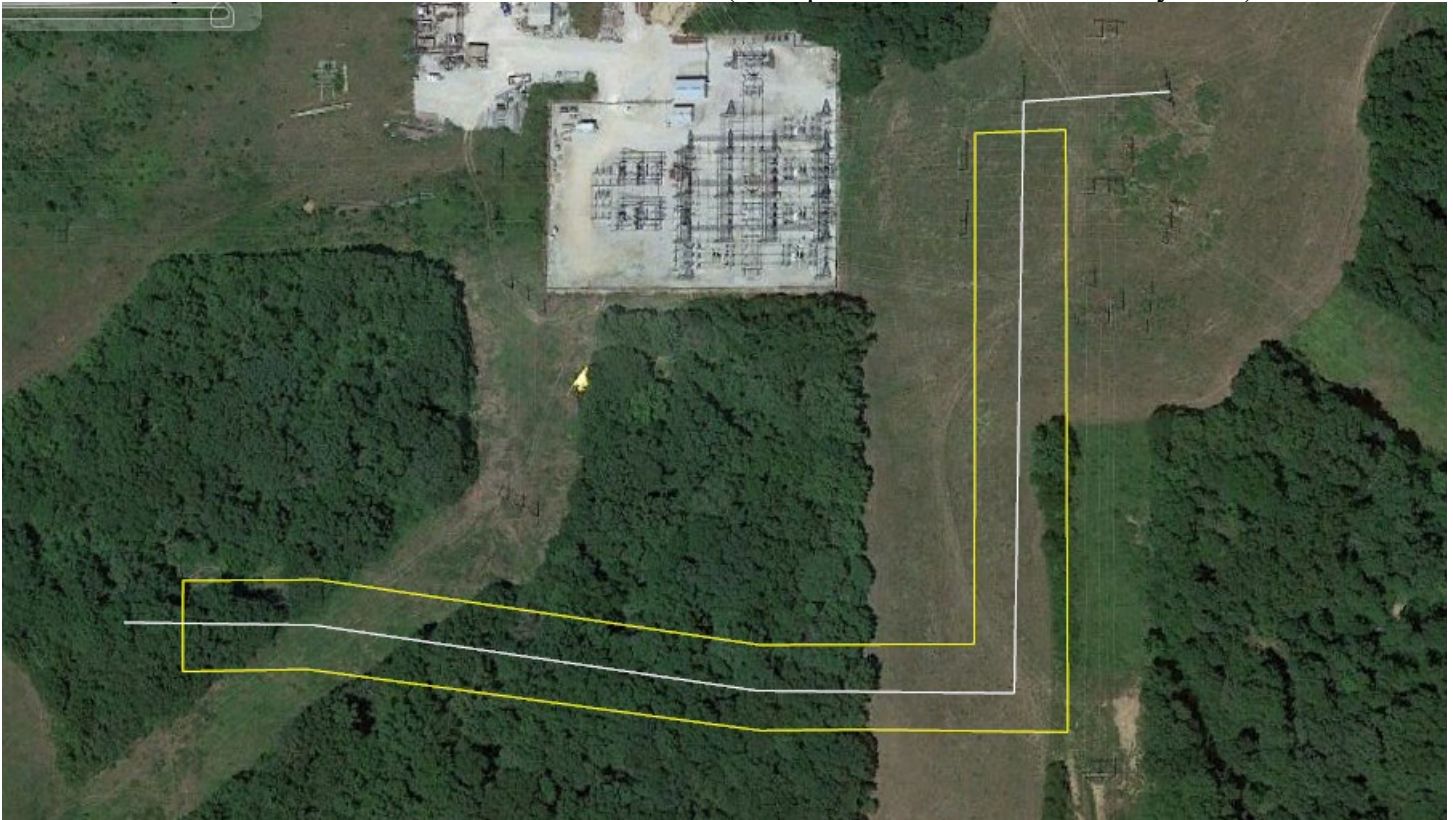
**FIGURE 3 – PLAN VIEW OF EASEMENT NEEDED FOR LOY MARTIN – COOPER 161 kV**  
(anticipated easement outlined in yellow)



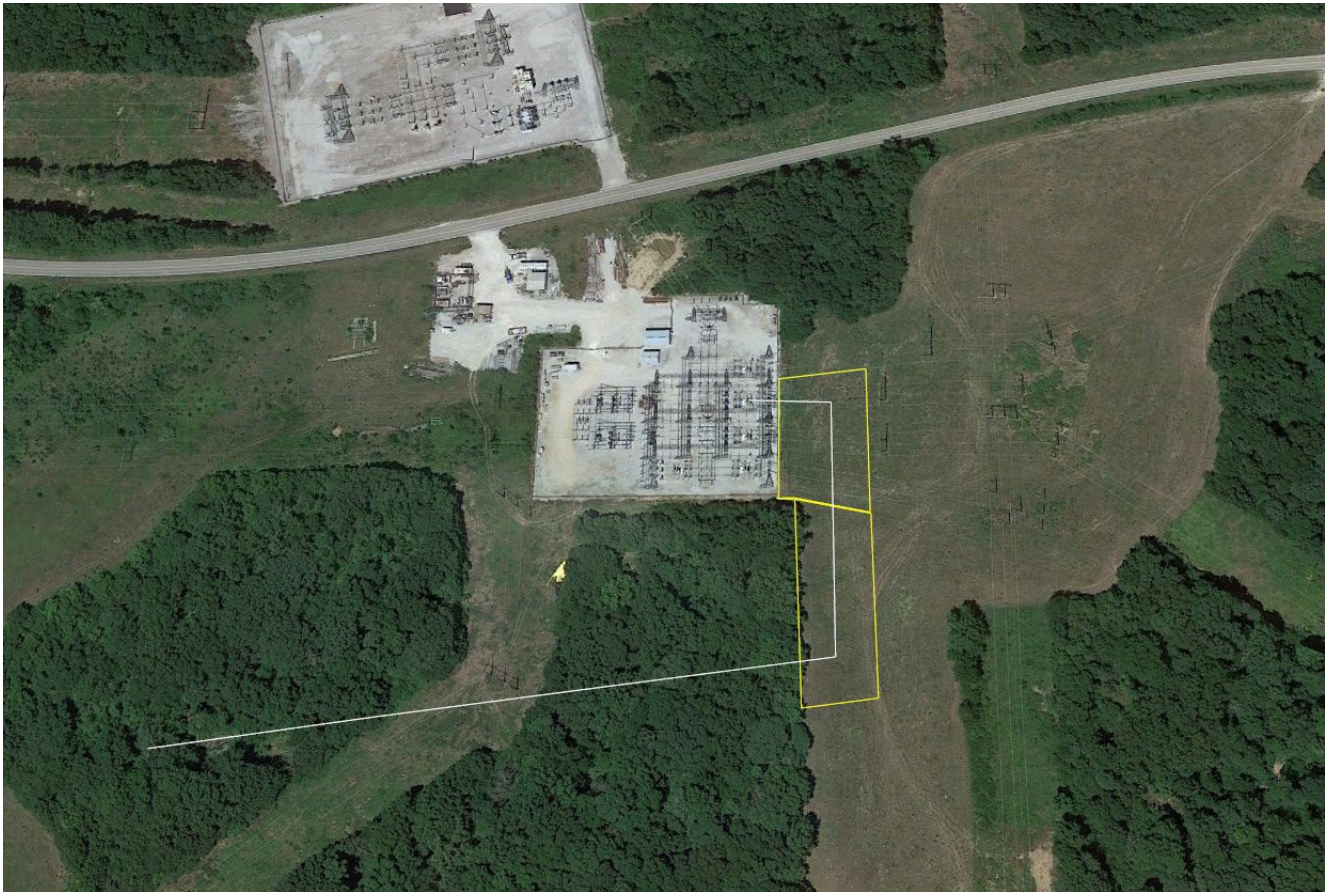
**FIGURE 4 – PLAN VIEW OF EASEMENT NEEDED FOR COOPER—MOBERLY 161kV**  
(anticipated easement outlined in yellow)



**FIGURE 5 – CW&L – COOPER 161kV** (anticipated easement outlined in yellow)



**FIGURE 6 – TIE LINE FOR 69KV SUBSTATION**



Top polygon outlined in yellow is the existing easement; bottom polygon outlined in yellow represents the necessary easement expansion