

NO SUPPLEMENT TO THIS TARIFF WILL BE ISSUED EXCEPT FOR THE PURPOSE OF CANCELING THIS TARIFF.

P. S. C. Mo. No. 17

### BASE RATE AREA MAP

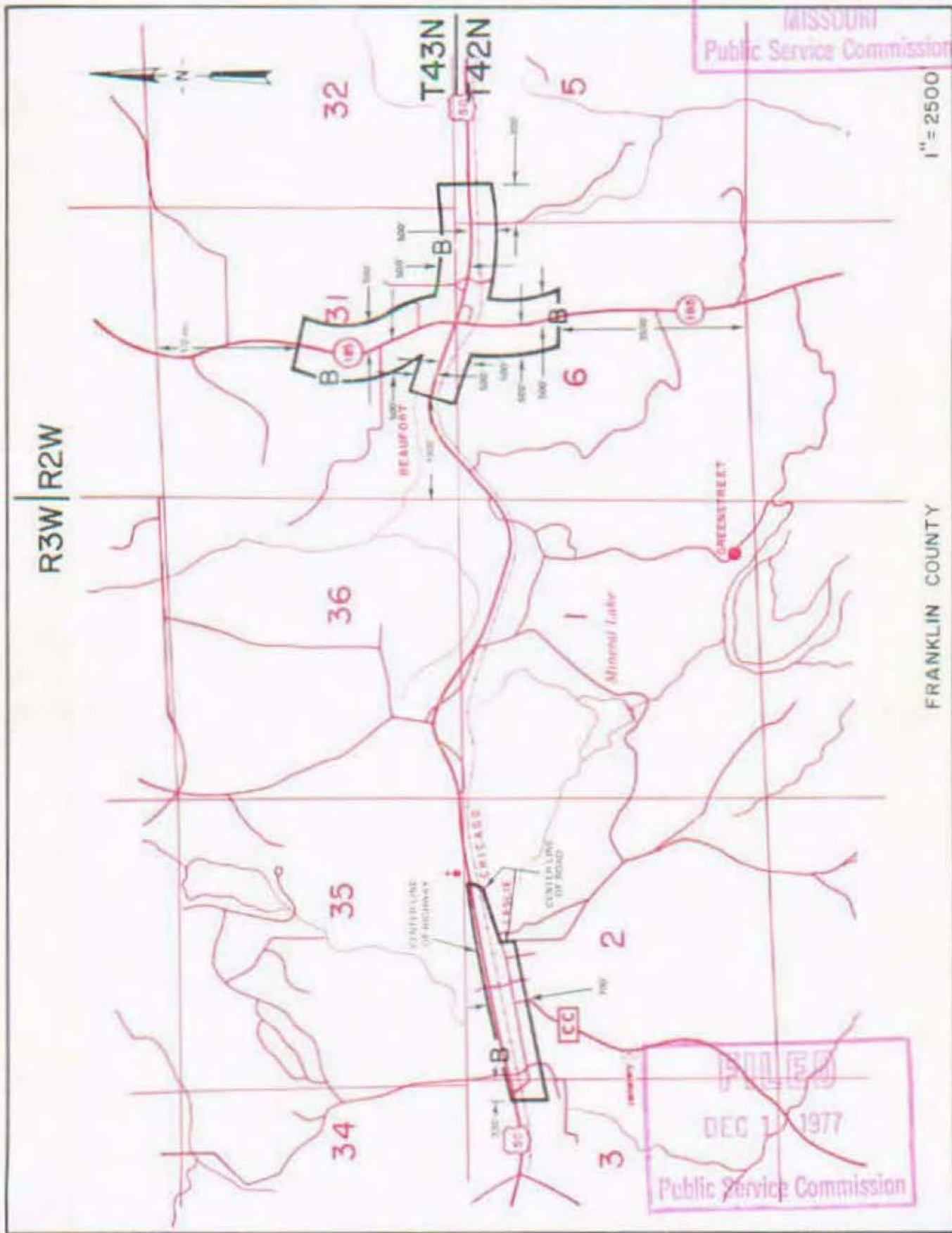
Beaufort, Missouri

OR REVISED SHEET 2,  
REPLACING ORIGINAL SHEET 2

MAY 20 1977

MISSOURI  
Public Service Commission

1" = 2500'



CANCELLED - Missouri Public Service Commission - 05/01/2024 - TN-2024-0278 - JI-2024-0142

By R. R. SHOCKLEY, Vice President, Missouri  
Southwestern Bell Telephone

DEC 1 1977

NO SUPPLEMENT TO THIS TARIFF WILL BE ISSUED EXCEPT FOR THE PURPOSE OF CANCELING THIS TARIFF.

Beaufort, Missouri

P. S. C. Mo. No. 17

# EXCHANGE AREA MAP

REPLACING

8<sup>th</sup> Revised Sheet 3  
7<sup>th</sup> Revised Sheet 3

CANCELLED - Missouri Public Service Commission - 05/01/2024 - TN-2024-0278 - JI-2024-0142



T44N  
T43N

T43N  
T42N

T42N  
T41N

R3W | R2W

R2W | R1W

By CINDY BRINKLEY, President-Missouri  
Southwestern Bell Telephone, L.P., d/b/a AT&T Missouri  
St. Louis, Missouri

Issued: January 30, 2006

Effective: March 1, 2006

NO SUPPLEMENT TO THIS TARIFF WILL BE ISSUED EXCEPT FOR THE PURPOSE OF CANCELING THIS TARIFF.

P. S. C. Mo. No. 17

# EXCHANGE AREA MAP

REPLACING 7th REVISED SHEET 3  
6th REVISED SHEET 3

MAY 20 1977

MISSOURI  
Public Service Commission



R4W | R3W

R3W | R2W

DEC 1 1977 R2W | R1W

By R. R. SHOCKLEY, Vice President, Missouri  
Southwestern Bell Telephone Company

May 23 1977

Public Service Commission DEC 1 1977

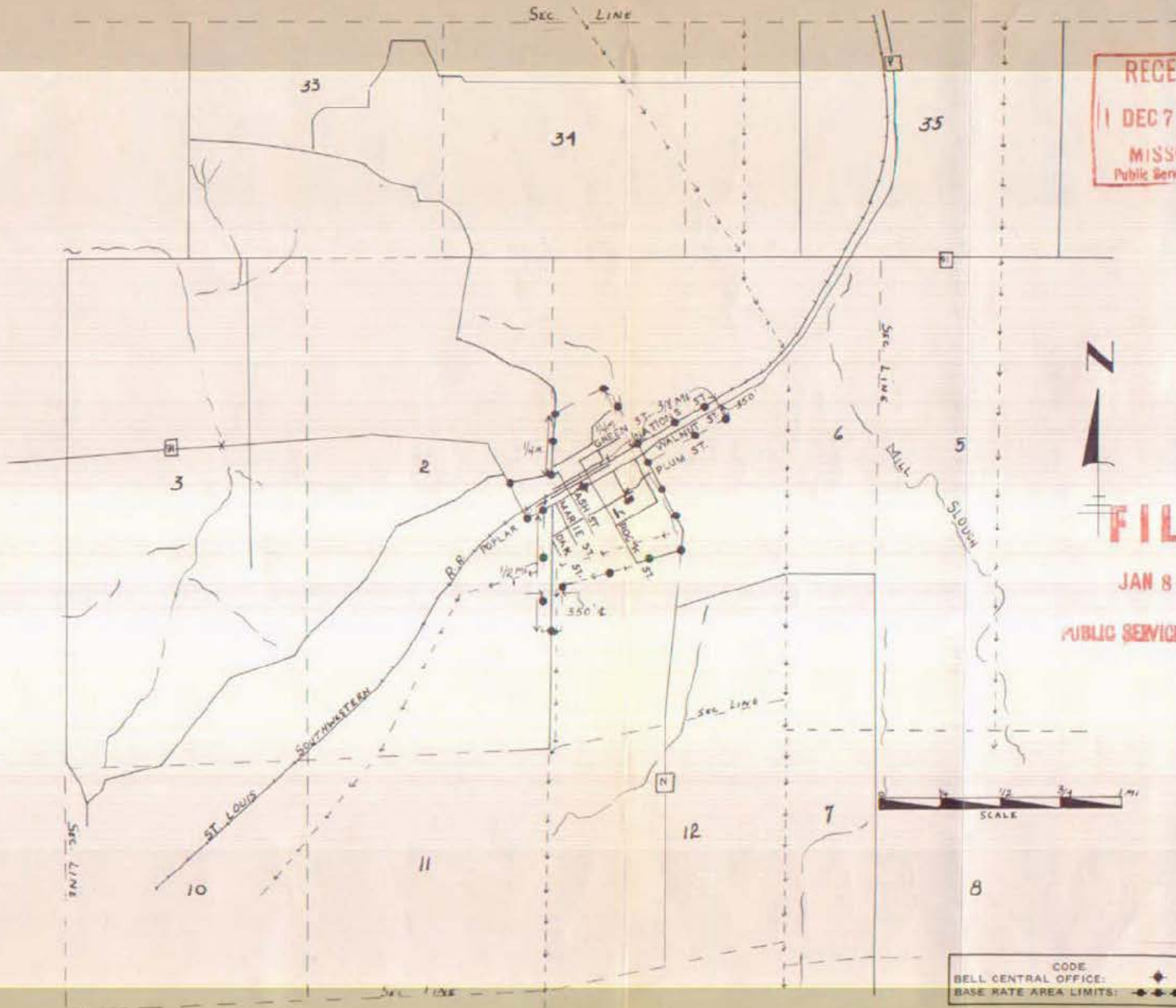
NO SUPPLEMENT TO THIS TARIFF WILL BE ISSUED EXCEPT FOR THE PURPOSE OF CANCELING THIS TARIFF.

P. S. C. Mo. No. 17  
BASE RATE AREA MAP

Bell City, Missouri  
ORIGINAL SHEET 2  
REPLACING SOUTHEAST MISSOURI  
TELEPHONE COMPANY P. S. C. Mo. No. 2  
2nd REVISED SHEET 2

BELL CITY, MO.

CANCELLED - Missouri Public Service Commission - 05/01/2024 - TN-2024-0278 - JI-2024-0142



RECEIVED  
DEC 7 1955  
MISSOURI  
Public Service Comm.

FILED  
JAN 8 1956  
PUBLIC SERVICE COMMISSION

Issued: December 8, 1955

By J. R. PETERSON, General Manager  
Southwestern Bell Telephone Company  
St. Louis, Missouri

Effective: January 8, 1956

NO SUPPLEMENT TO THIS TARIFF WILL BE ISSUED EXCEPT FOR THE PURPOSE OF CANCELING THIS TARIFF.

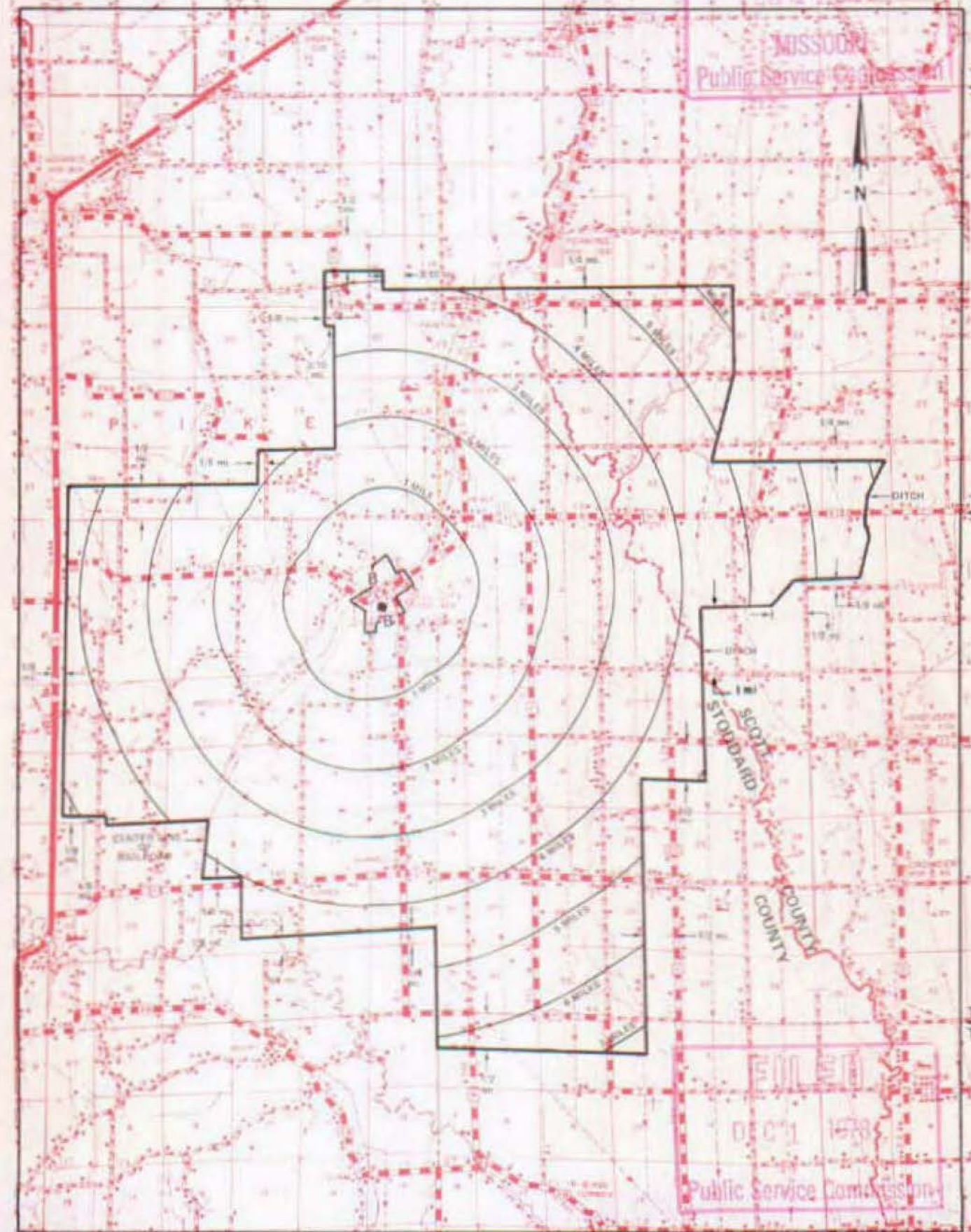
# P. S. C. Mo. No. 17 EXCHANGE AREA MAP

Bell City, Missouri  
**RECEIVED**  
4th REVISED SHEET 3  
REPLACING 3rd REVISED SHEET 3  
FEB 11 1977  
MISSOURI  
Public Service Commission

T29N  
T28N

T28N  
T27N

T27N  
T26N



R9E | R10E

R10E | R11E

R11E | R12E

By R. R. SHOCKLEY, Vice President, Missouri  
Southwestern Bell Telephone Company

**FILED**  
DEC 1 1978  
Public Service Commission

DEC 1 1978

CANCELLED - Missouri Public Service Commission - 05/01/2024 - TN-2024-0278 - JI-2024-0142

SBC PSC MO #17

Benton, Missouri

Original Sheet 2

Replacing 1<sup>st</sup> Revised Sheet 1-A

Southeast Missouri Tele. Company

P.S.C. Mo. No. 2

# Non-Scannable Map

(Is viewable in the Data Center  
200 Madison Street, 1<sup>st</sup> Floor  
Jefferson City MO)

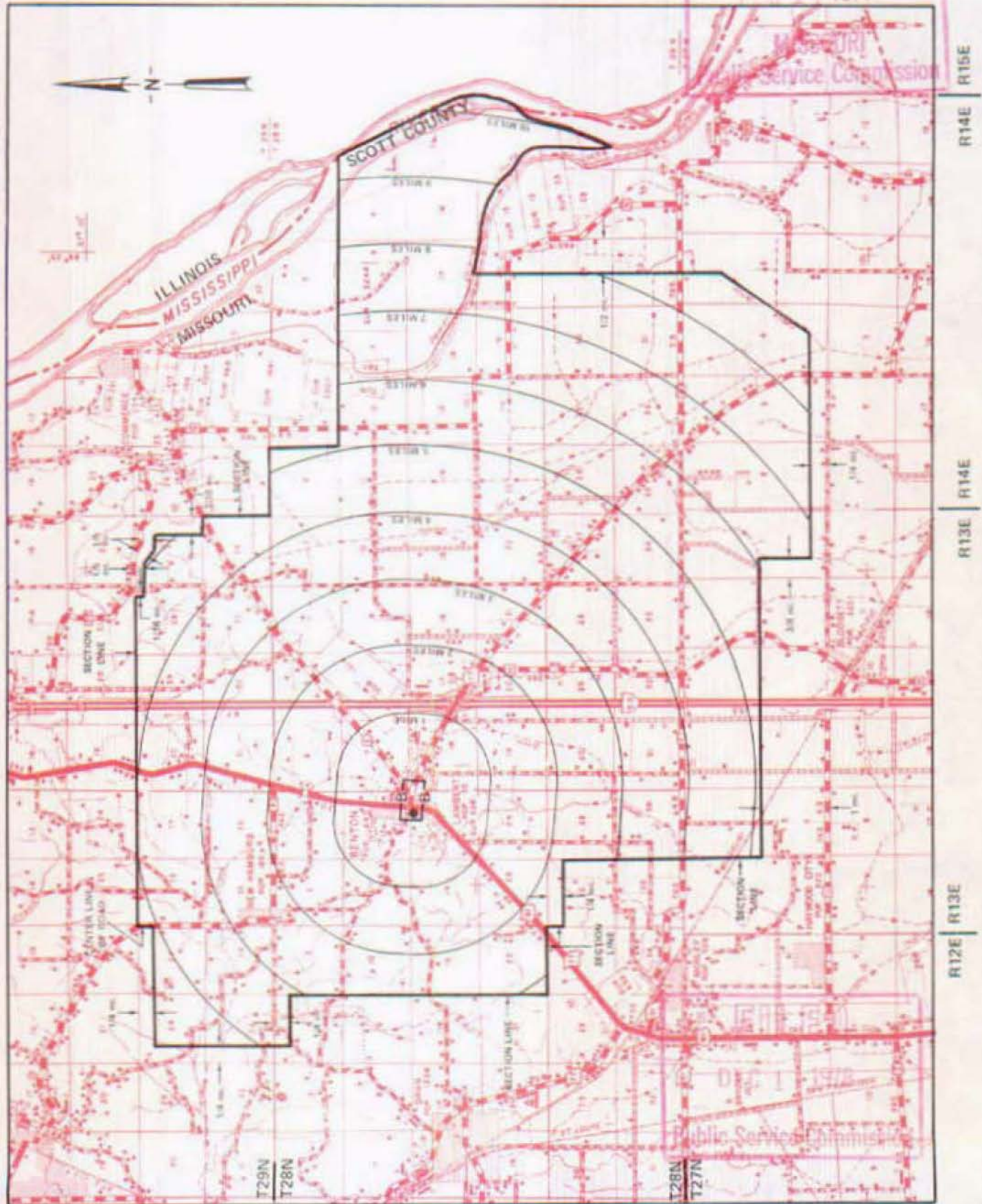
NO SUPPLEMENT TO THIS TARIFF WILL BE ISSUED EXCEPT FOR THE PURPOSE OF CANCELING THIS TARIFF.

# P. S. C. Mo. No. 17 EXCHANGE AREA MAP

Benton, Missouri  
3rd REVISED SHEET 3  
REPLACING 2nd REVISED SHEET 3

FEB 14 1977

MISSOURI  
Public Service Commission



CANCELLED - Missouri Public Service Commission - 05/01/2024 - TN-2024-0278 - JI-2024-0142

By R. R. SHOCKLEY, Vice President, Missouri  
Southwestern Bell Telephone Company  
St. Louis, Missouri

Issued: February 15, 1977

DEC 1 1978  
Effective April 15, 1977

SBC PSC MO #17  
Billings, Missouri  
2<sup>nd</sup> Revised Sheet 2  
Replacing 1<sup>st</sup> Revised Sheet 2

# Non-Scannable Map

(Is viewable in the Data Center  
200 Madison Street, 1<sup>st</sup> Floor  
Jefferson City MO)



RECEIVED

Billings, Missouri

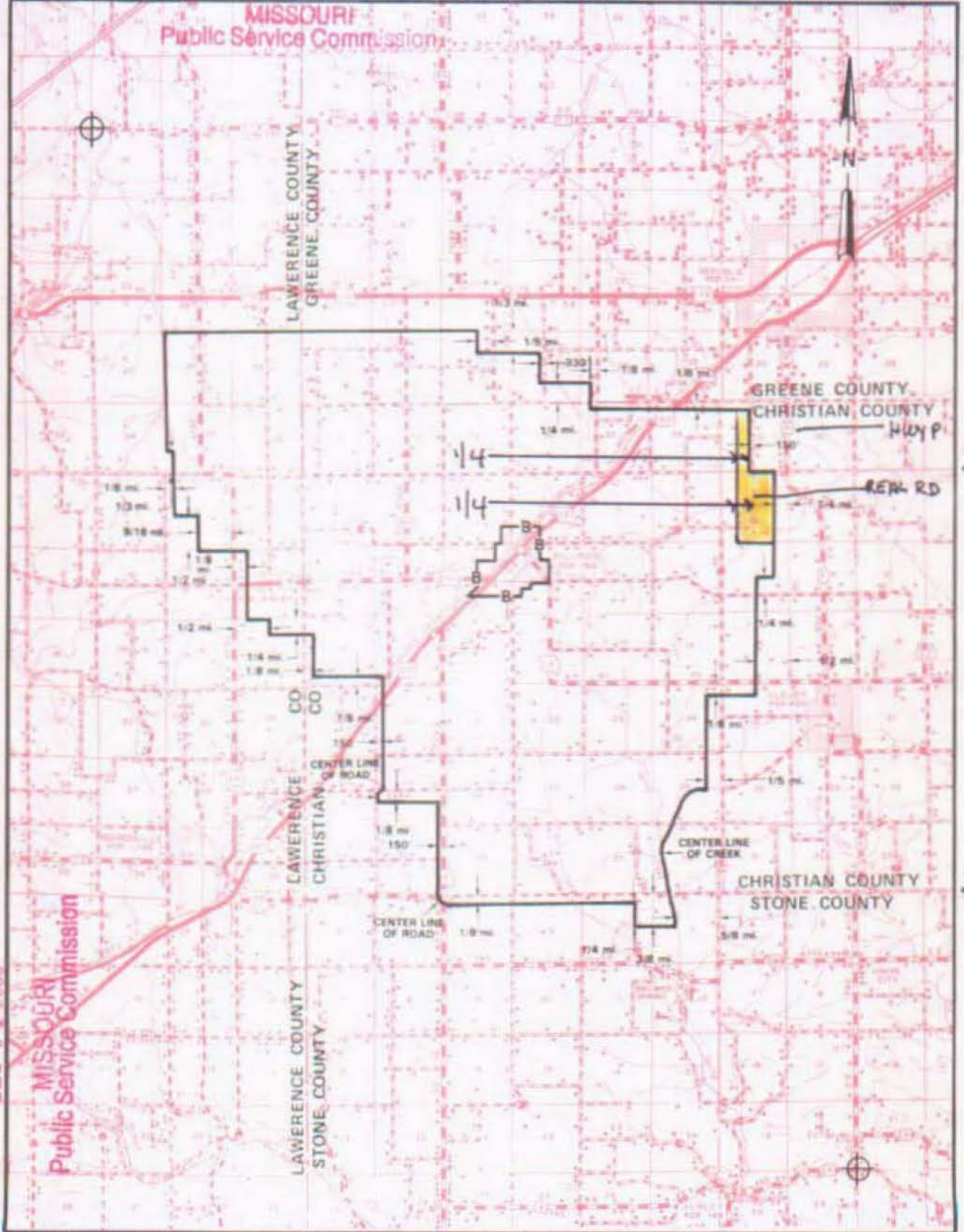
NO SUPPLEMENT TO THIS TARIFF WILL BE ISSUED EXCEPT FOR THE PURPOSE OF CANCELING THIS TARIFF.

P. S. C. Mo. No. 17  
**EXCHANGE AREA MAP**

3<sup>rd</sup> REVISED SHEET 3  
REPLACING 2<sup>nd</sup> REVISED SHEET 3

MISSOURI  
Public Service Commission

T29N  
T28N



T28N  
T27N

T27N  
T26N

CANCELLED - Missouri Public Service Commission - 05/01/2024 - TN-2024-0278 - JI-2024-0142

DEC 04 2000

MISSOURI  
Public Service Commission

R25W | R24W | R23W  
PAN NEWTON

November 3, 2000

By R. D. BARRON, PRESIDENT, MISSOURI DIVISION

December 4, 2000

Issued: February 19, 1991

Southwestern Bell Telephone Company  
St. Louis, Missouri

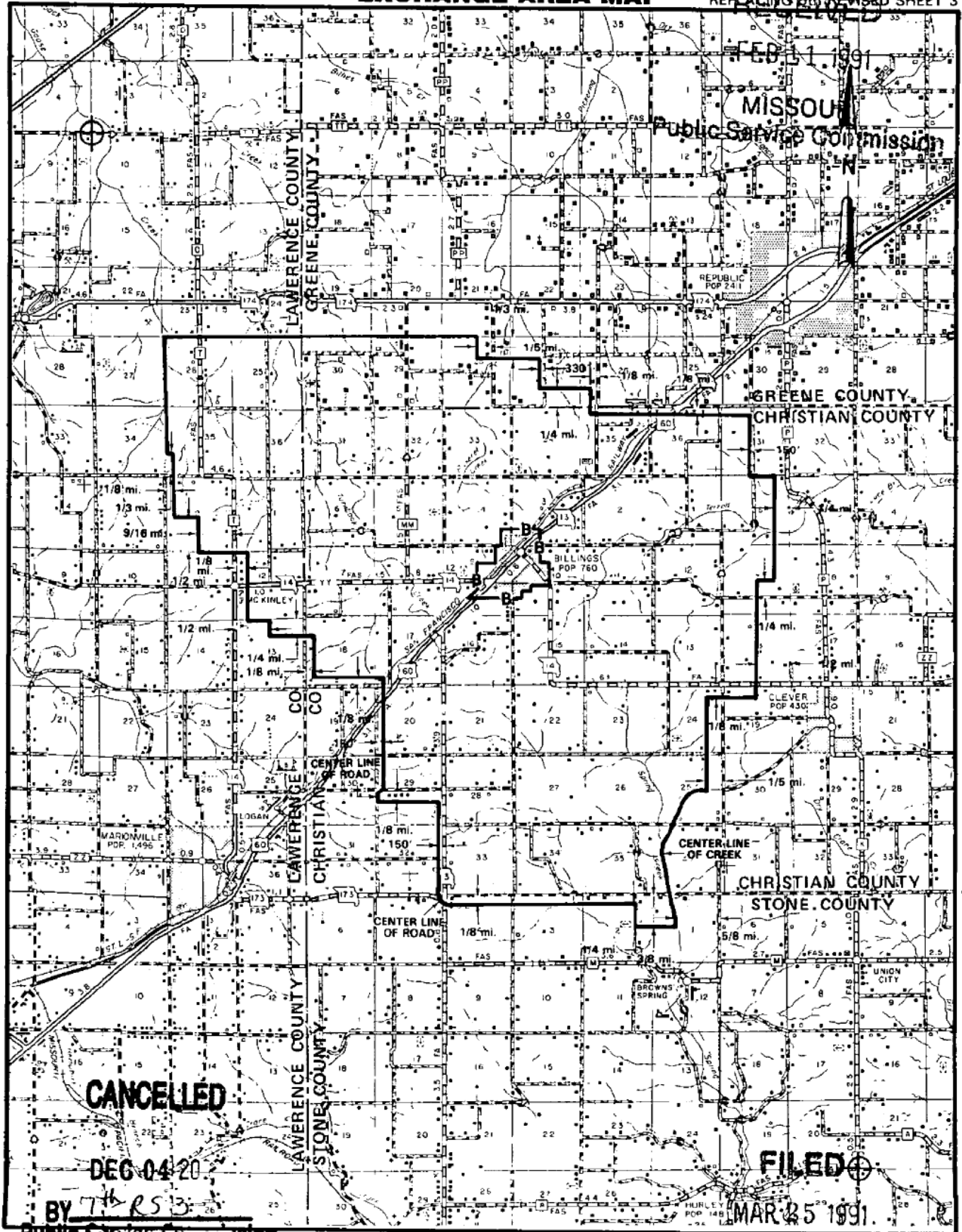
Effective: March 25, 1991

NO SUPPLEMENT TO THIS TARIFF WILL BE ISSUED EXCEPT FOR THE PURPOSE OF CANCELING THIS TARIFF.

# P. S. C. Mo. No. 17 EXCHANGE AREA MAP

6th REVISED SHEET 3  
REPLACING 5th REVISED SHEET 3

Billings, Missouri



T29N  
T28N

T28N  
T27N

T27N  
T26N

**CANCELLED**

DEC 04 20

BY 7th RS 3

**FILED**

MAR 25 1991

Public Service Commission  
MISSOURI  
R25W | R24W

By R. D. BARRON, PRESIDENT, MISSOURI DIVISION  
Southwestern Bell Telephone Company  
St. Louis, Missouri

Public Service Commission  
R24W | R23W

Issued: February 19, 1991

Effective: March 25, 1991

SBC PSC MO #17  
Bismarck, Missouri  
1<sup>st</sup> Revised Sheet 2  
Replacing Original Sheet 2

# Non-Scannable Map

(Is viewable in the Data Center  
200 Madison Street, 1<sup>st</sup> Floor  
Jefferson City MO)

NO SUPPLEMENT TO THIS TARIFF WILL BE ISSUED EXCEPT FOR THE PURPOSE OF CANCELING THIS TARIFF.

P. S. C. Mo. No. 17

Bismarck, Missouri

EXCHANGE AREA MAP

7<sup>th</sup> REVISED SHEET 3  
REPLACING 7<sup>th</sup> REVISED SHEET 3

Missouri Public Service Commission

REC'D APR 19 1999

T37N

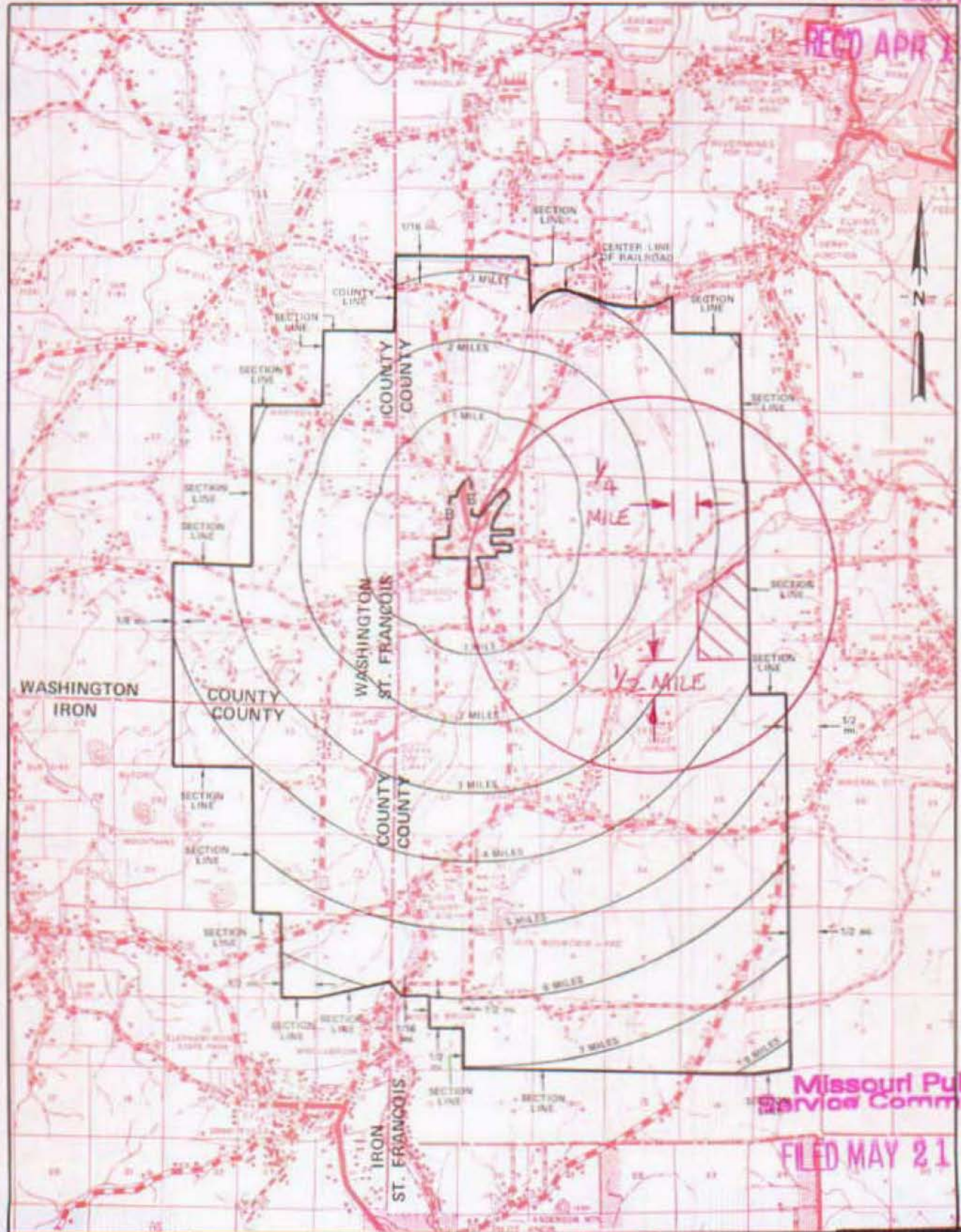
T36N

T36N

T35N

T35N

T34N



CANCELLED - Missouri Public Service Commission - 05/01/2024 - TN-2024-0278 - JI-2024-0142

Missouri Public Service Commission

FILED MAY 21 1999

APR 19 1999

R3E | R4E Priscilla Hill-Ardoin  
By R. R. SHOCKLEY, Vice President, Missouri  
Southwestern Bell Telephone Company

R4E | R5E MAY 19 1999

Effective: JUL 1 MAY 21 1999

May 10, 1977

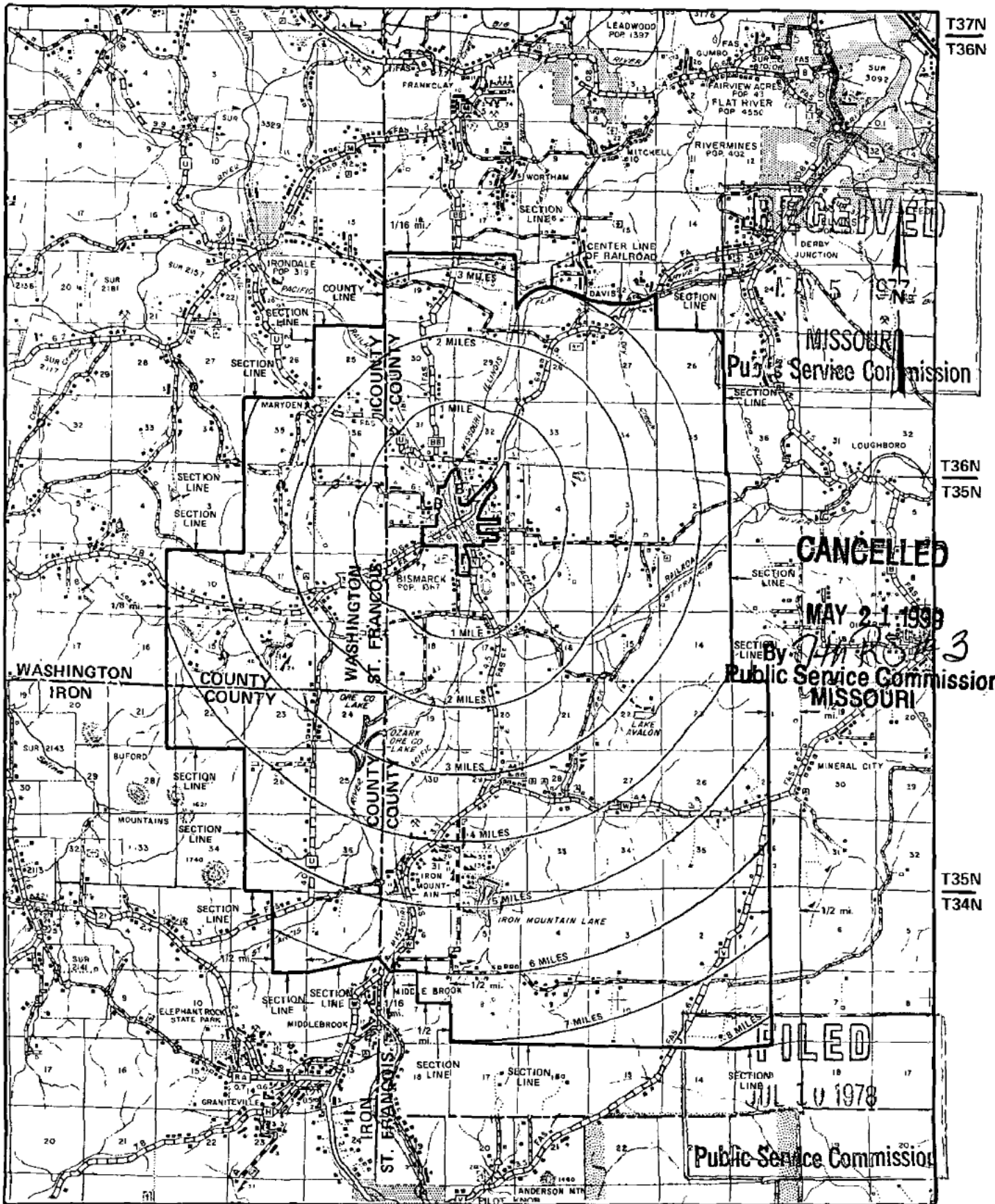
NO SUPPLEMENT TO THIS TARIFF WILL BE ISSUED EXCEPT FOR THE PURPOSE OF CANCELING THIS TARIFF.

P. S. C. Mo. No. 17

Bismarck, Missouri

6th REVISED SHEET 3  
REPLACING 5th REVISED SHEET 3

# EXCHANGE AREA MAP



R3E | R4E

R4E | R5E

By R. R. SHOCKLEY, Vice President, Missouri  
Southwestern Bell Telephone Company  
St. Louis, Missouri

Issued: May 10, 1977

Effective: JUL 10 1978

SBC PSC MO #17  
Bloomfield, Missouri  
Original Sheet 2  
Replacing 1<sup>st</sup> Revised Sheet 1-A

# Non-Scannable Map

(Is viewable in the Data Center  
200 Madison Street, 1<sup>st</sup> Floor  
Jefferson City MO)

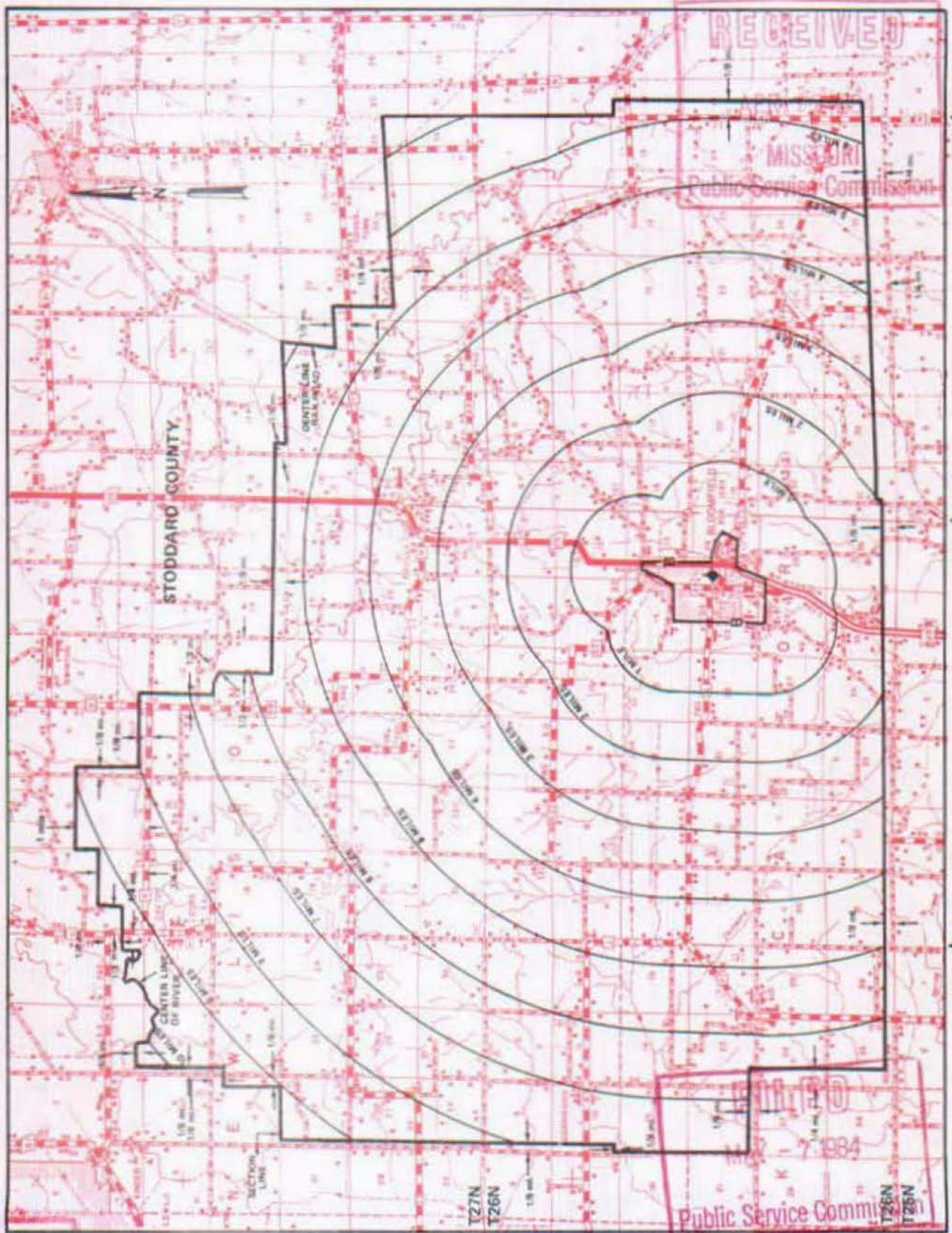
NO SUPPLEMENT TO THIS TARIFF WILL BE ISSUED EXCEPT FOR THE PURPOSE OF CANCELING THIS TARIFF.

P. S. C. Mo. No. 17

Bloomfield, Missouri

EXCHANGE AREA MAP

8th REVISED SHEET 3  
REPLACING 7th REVISED SHEET 3



By R. D. BARRON, President, Missouri DIVISION  
Southwestern Bell Telephone Company

Issued: APRIL 6, 1984

CANCELLED - Missouri Public Service Commission - 05/01/2024 - TN-2024-0278 - JI-2024-0142

NO SUPPLEMENT TO THIS TARIFF WILL BE ISSUED EXCEPT FOR THE PURPOSE OF CANCELING THIS TARIFF.

P. S. C. Mo. No. 17

Bloomdsdale, Missouri

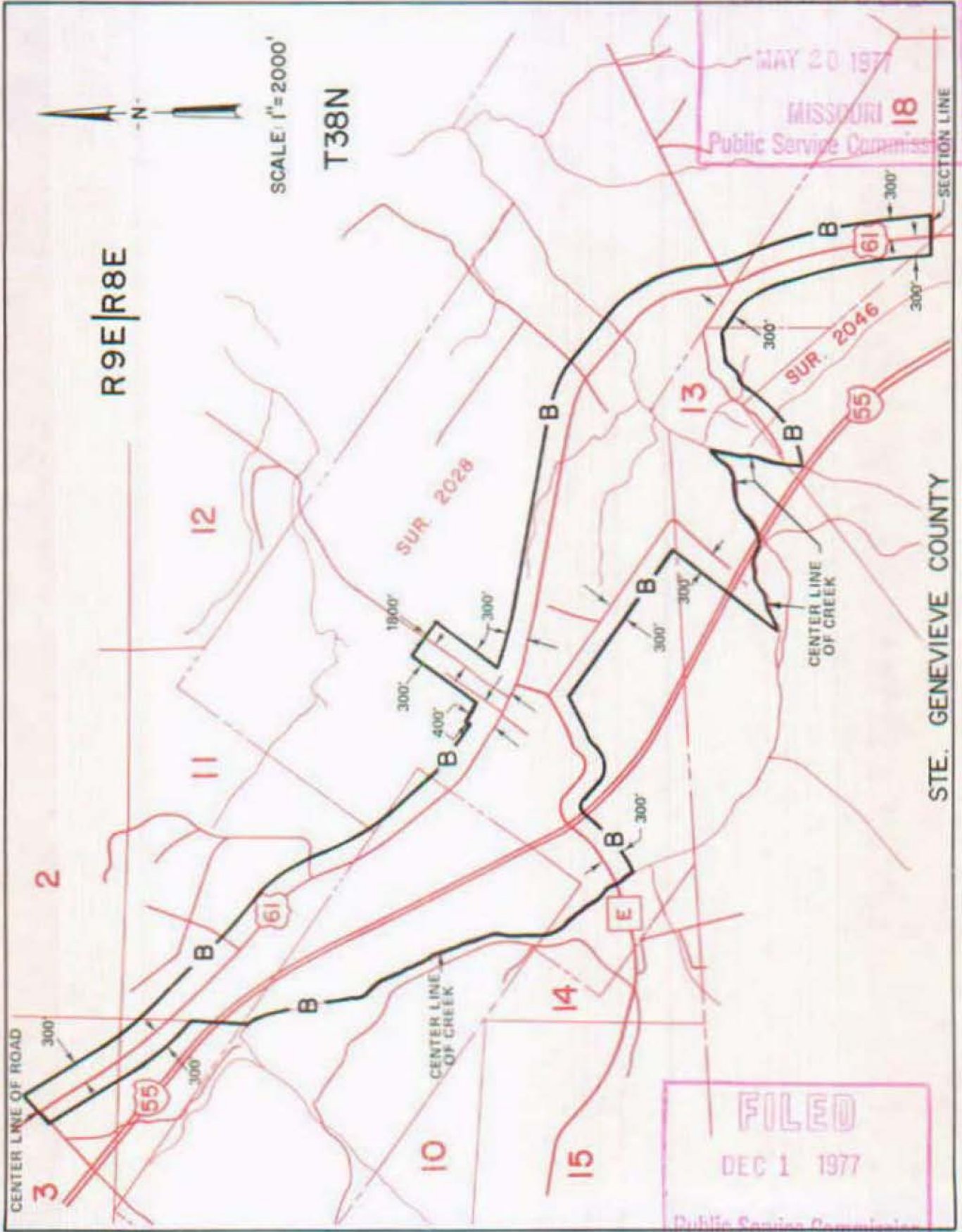
### BASE RATE AREA MAP

2nd REVISED SHEET 2  
REPLACING 1st REVISED SHEET 2

RECEIVED

MAY 20 1977

MISSOURI PUBLIC SERVICE COMMISSION



CANCELLED - Missouri Public Service Commission - 05/01/2024 - TN-2024-0278 - JI-2024-0142

FILED

DEC 1 1977

Public Service Commission

By R. R. SHOCKLEY, Vice President, Missouri  
Southwestern Bell Telephone  
St. Louis, Missouri

Issued May 23 1977

Effective: DEC 1 1977



NO SUPPLEMENT TO THIS TARIFF WILL BE ISSUED EXCEPT FOR THE PURPOSE OF CANCELING THIS TARIFF.

P. S. C. Mo. No. 17  
EXCHANGE AREA MAP

Bloomdsale, Missouri

12th REVISED SHEET 3  
REPLACING 11th REVISED SHEET 3

RECEIVED

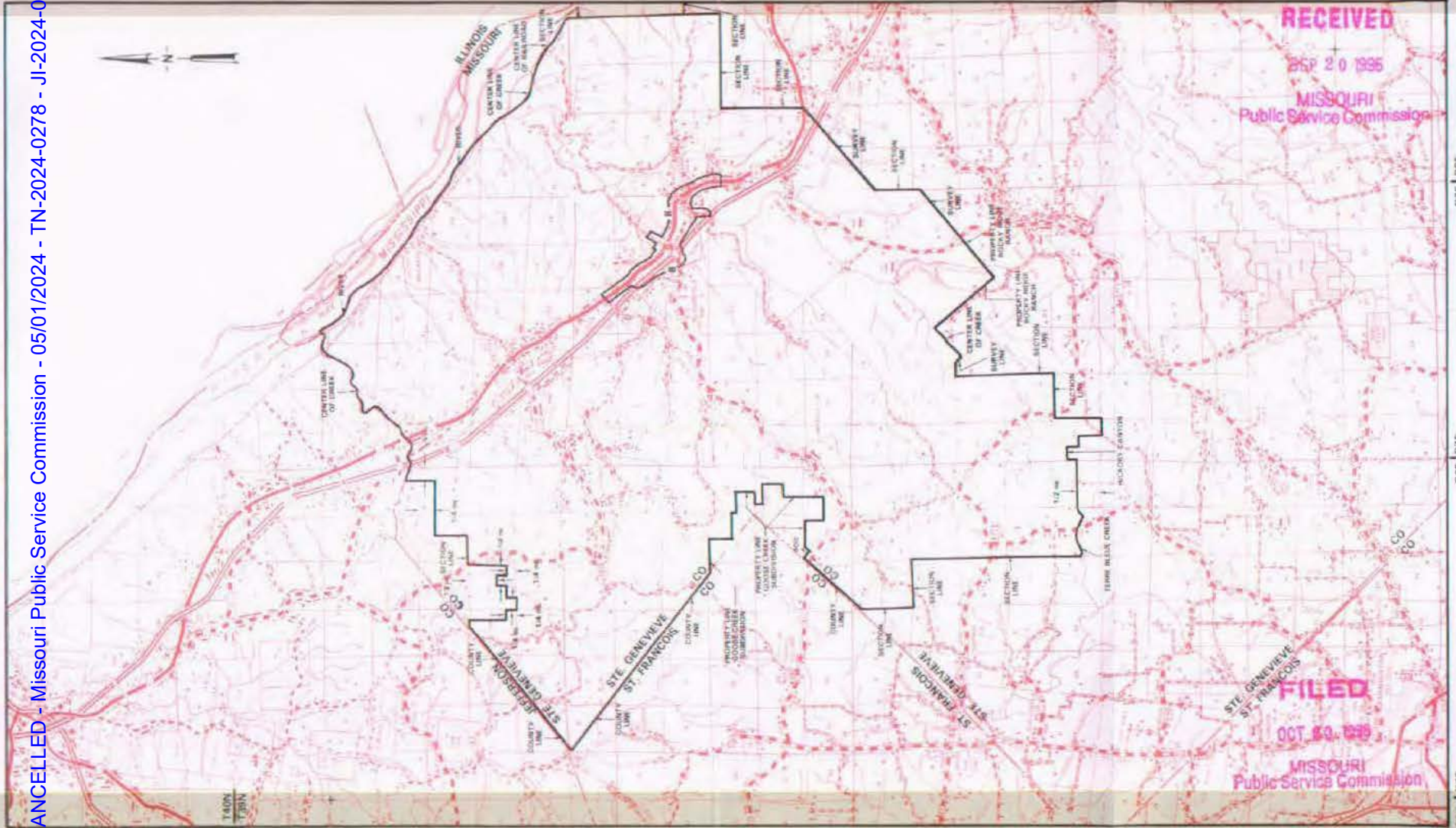
SEP 20 1995

MISSOURI  
Public Service Commission

FILED

OCT 20 1995

MISSOURI  
Public Service Commission



CANCELLED - Missouri Public Service Commission - 05/01/2024 - TN-2024-0278 - JI-2024-0142

By KAREN JENNINGS, President - Missouri  
Southwestern Bell Telephone Company  
St. Louis, Missouri

Issued: September 20, 1995

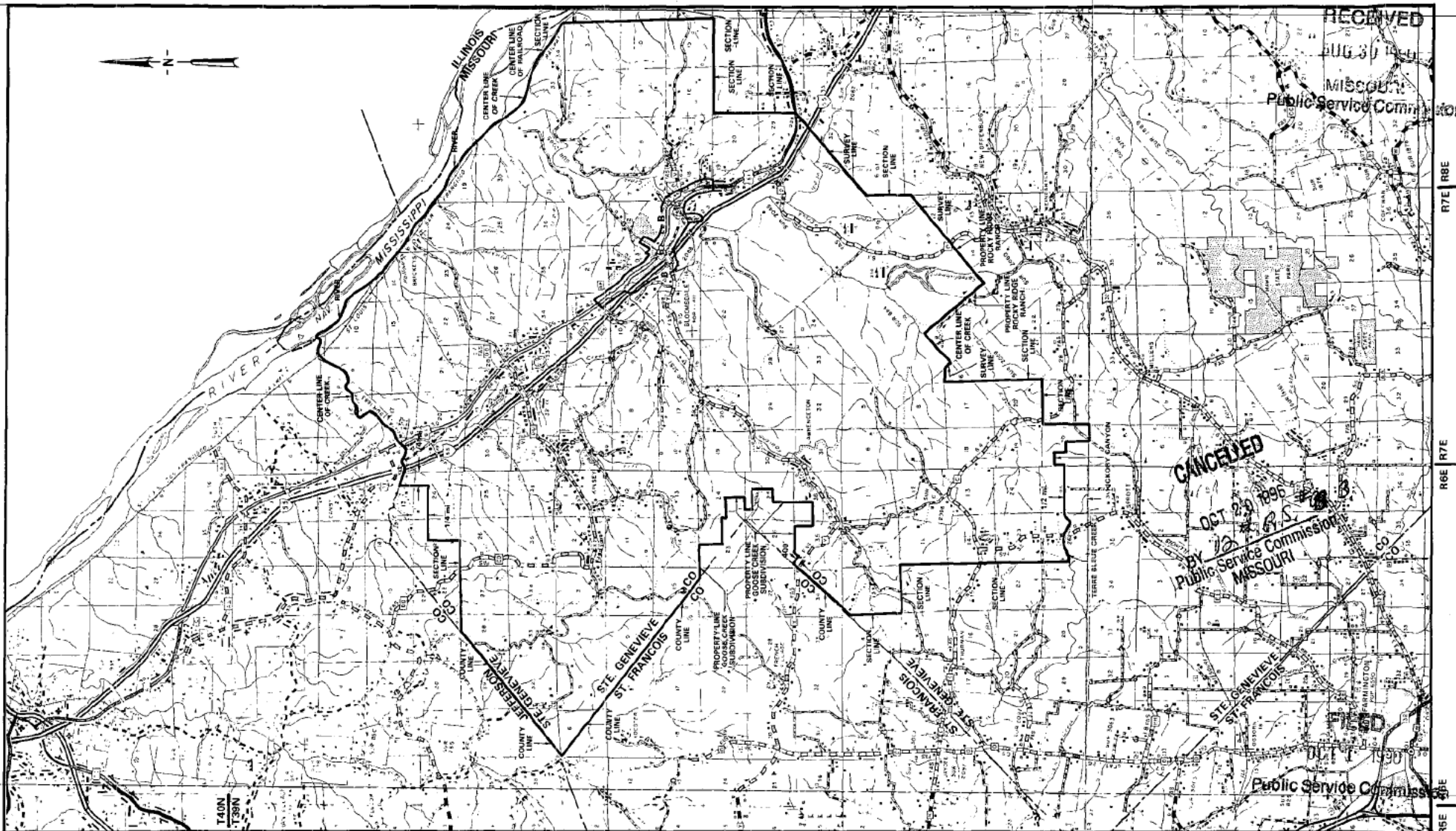
Effective: October 20, 1996

NO SUPPLEMENT TO THIS TARIFF WILL BE ISSUED EXCEPT FOR THE PURPOSE OF CANCELING THIS TARIFF.

### P. S. C. Mo. No. 17 EXCHANGE AREA MAP

Bloomdsale, Missouri

11th REVISED SHEET 3  
REPLACING 10th REVISED SHEET 3



By R. D. BARRON, PRESIDENT, MISSOURI DIVISION  
Southwestern Bell Telephone Company  
St. Louis, Missouri

Issued: August 30, 1990

Effective: October 1, 1990

NO SUPPLEMENT TO THIS TARIFF WILL BE ISSUED EXCEPT FOR THE PURPOSE OF CANCELING THIS TARIFF.

Missouri Portion Blytheville, Arkansas

# P. S. C. Mo. No. 17 EXCHANGE AREA MAP

**RECEIVED**  
10th REVISED SHEET 2  
REPLACING 9th REVISED SHEET 2  
**SEP 25 1978**  
MISSOURI  
Public Service Commission



T17N  
T16N

By R. R. SHOCKLEY, Vice President, Missouri  
Southwestern Bell Telephone Company

**FILED**  
**APR 1 - 1979**  
Public Service Commission

APR 1 - 1979

CANCELLED - Missouri Public Service Commission - 05/01/2024 - TN-2024-0278 - JI-2024-0142

R10E | R11E  
R11E | R12E

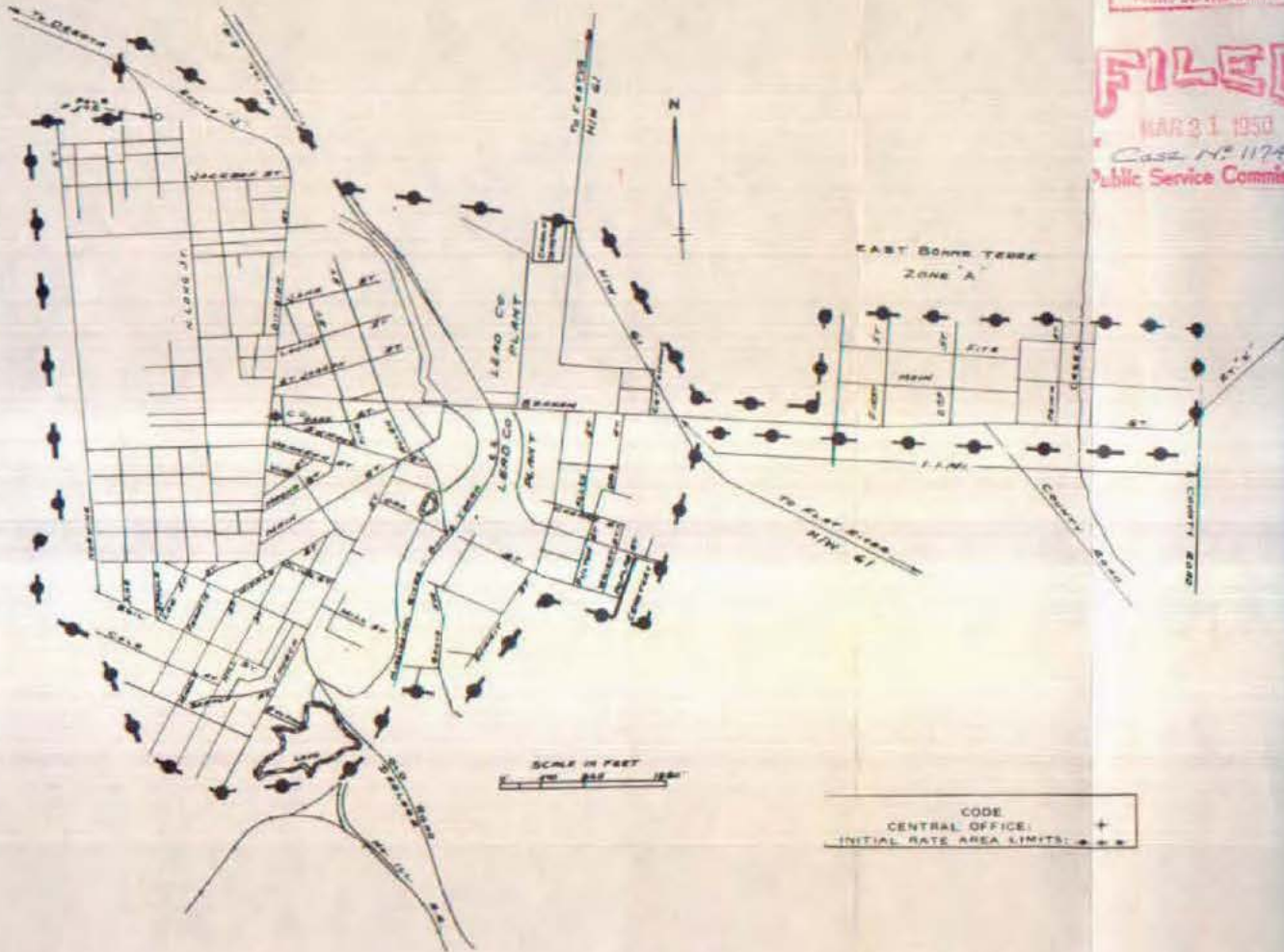
NO SUPPLEMENT TO THIS TARIFF WILL  
BE ISSUED EXCEPT FOR THE PURPOSE OF  
CANCELING THIS TARIFF.

Bonne Terre, Mo.  
FIRST REVISED SHEET 1-A  
REPLACING ORIGINAL SHEET 1-A

P. S. C. Mo. No. 2  
SOUTHEAST MISSOURI TELEPHONE COMPANY  
**INITIAL RATE AREA MAP**

**RECEIVED**  
MAR 21 1950  
MISSOURI  
Public Service Comm.

**FILED**  
MAR 21 1950  
Case No. 11742  
Public Service Commission



CANCELLED - Missouri Public Service Commission - 05/01/2024 - TN-2024-0278 - JI-2024-0142

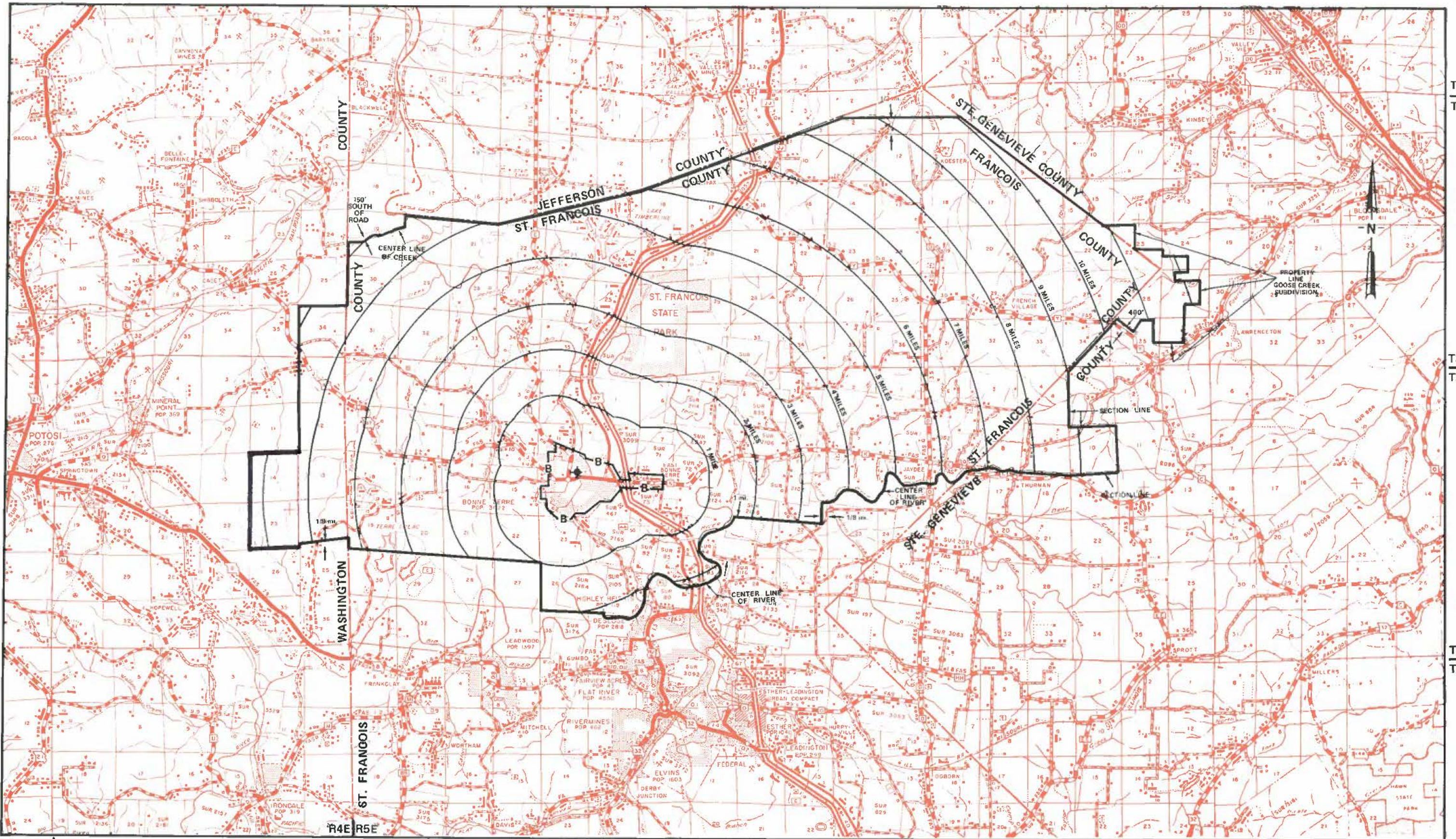
Issued: March 20, 1950

By C. W. BOUTIN, President and General Manager  
Cape Girardeau, Mo.

Effective: March 21, 1950

P. S. C. Mo. No. 17  
**EXCHANGE AREA MAP**

CANCELLED - Missouri Public Service Commission - 05/01/2024 - TN-2024-0278 - JI-2024-0142



THIS TARIFF WILL  
BE FOR THE PURPOSE OF  
FF.

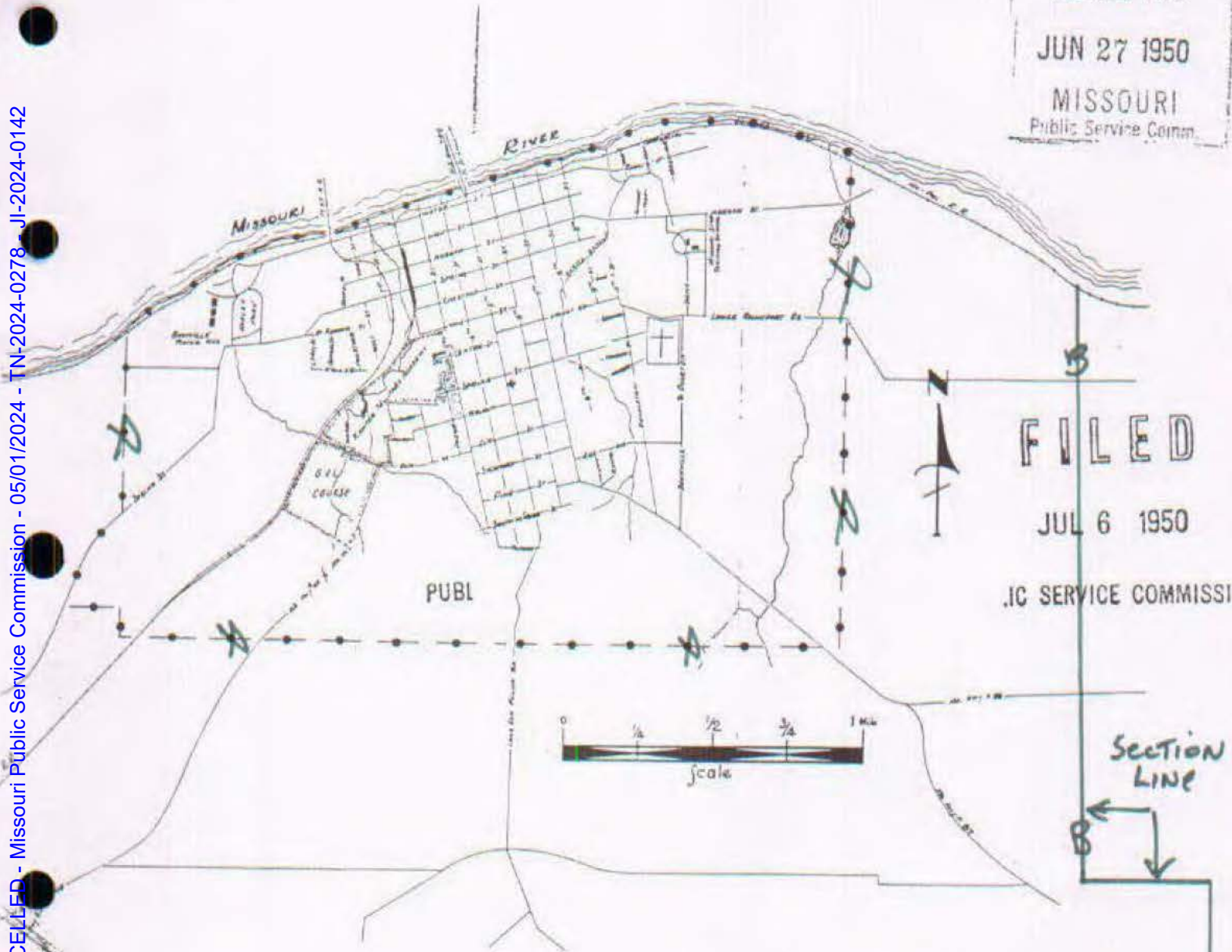
2nd Boonville, Missouri  
FIRST REVISED SHEET 2  
REPLACING ORIGINAL SHEET 2  
1st Revised

P. S. C.-Mo. No. 17

### BASE RATE AREA MAP

RECEIVED  
JUN 27 1950  
MISSOURI  
Public Service Comm.

CANCELLED - Missouri Public Service Commission - 05/01/2024 - TN-2024-0278 - JI-2024-0142





FILED


JUL 6 1950

MISSOURI PUBLIC SERVICE COMMISSION

SECTION LINE

**CODE**  
 BELL CENTRAL OFFICE:   
 BASE RATE AREA LIMITS: 

Current Base Rate Area   
Proposed Base Rate Area 

SECTION LINE 

B

1/2 mile from Center of I-70

B

SEP 12 1998

Priscilla Hill-Arbin, President-Missouri  
By H. R. TOWLES, General Manager  
Southwestern Bell Telephone Company  
St. Louis, Missouri

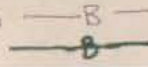
Effective: July 6, 1950  
~~SEP 26 1998~~  
OCT 12 1998

CANCELLED - Missouri Public Service Commission - 05/01/2024 - TN-2024-0278 - JI-2024-0142

NO SUPPLEMENT TO THIS TARIFF WILL BE ISSUED EXCEPT FOR THE PURPOSE OF CANCELING THIS TARIFF.

P. S. C. Mo. No. 17  
EXCHANGE AREA MAP

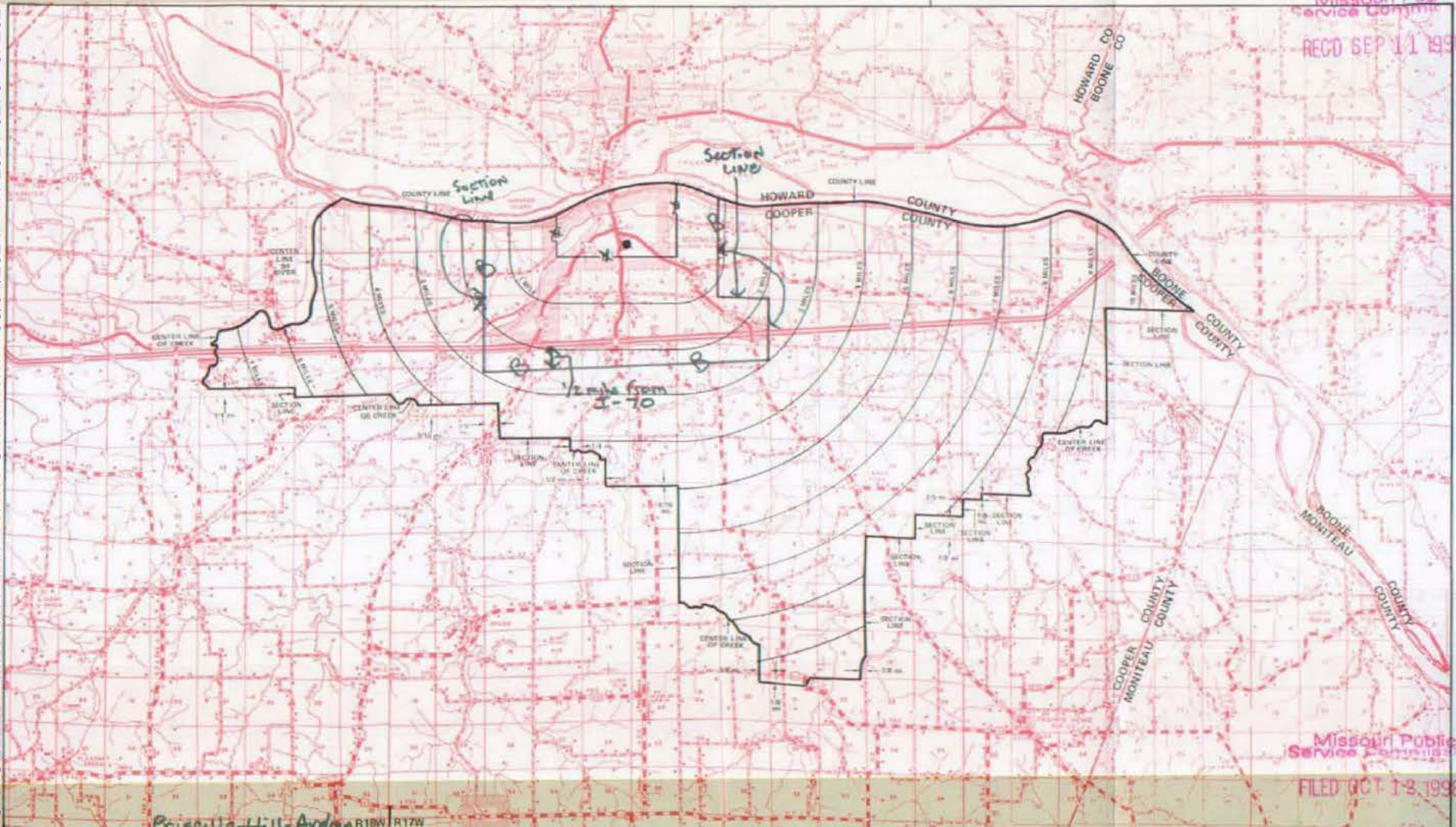
Current Base Rate Area  
Proposed Base Rate Area



Boonville, Missouri  
REPLACING REVISED SHEET 3  
REPLACING REVISED SHEET 3

Missouri Public Service Commission

RECD SEP 11 1998



T49N  
T48N

T49N  
T47N

Missouri Public Service Commission

FILED OCT 12 1998

SEP 12 1998  
By Priscilla Hill Avdan  
Southwestern Bell Telephone Company  
St. Louis, Missouri

By H. H. SHOCKLEY, Vice President, Missouri  
Southwestern Bell Telephone Company  
St. Louis, Missouri

R17W | R16W

R18W | R15W

R15W | R14W

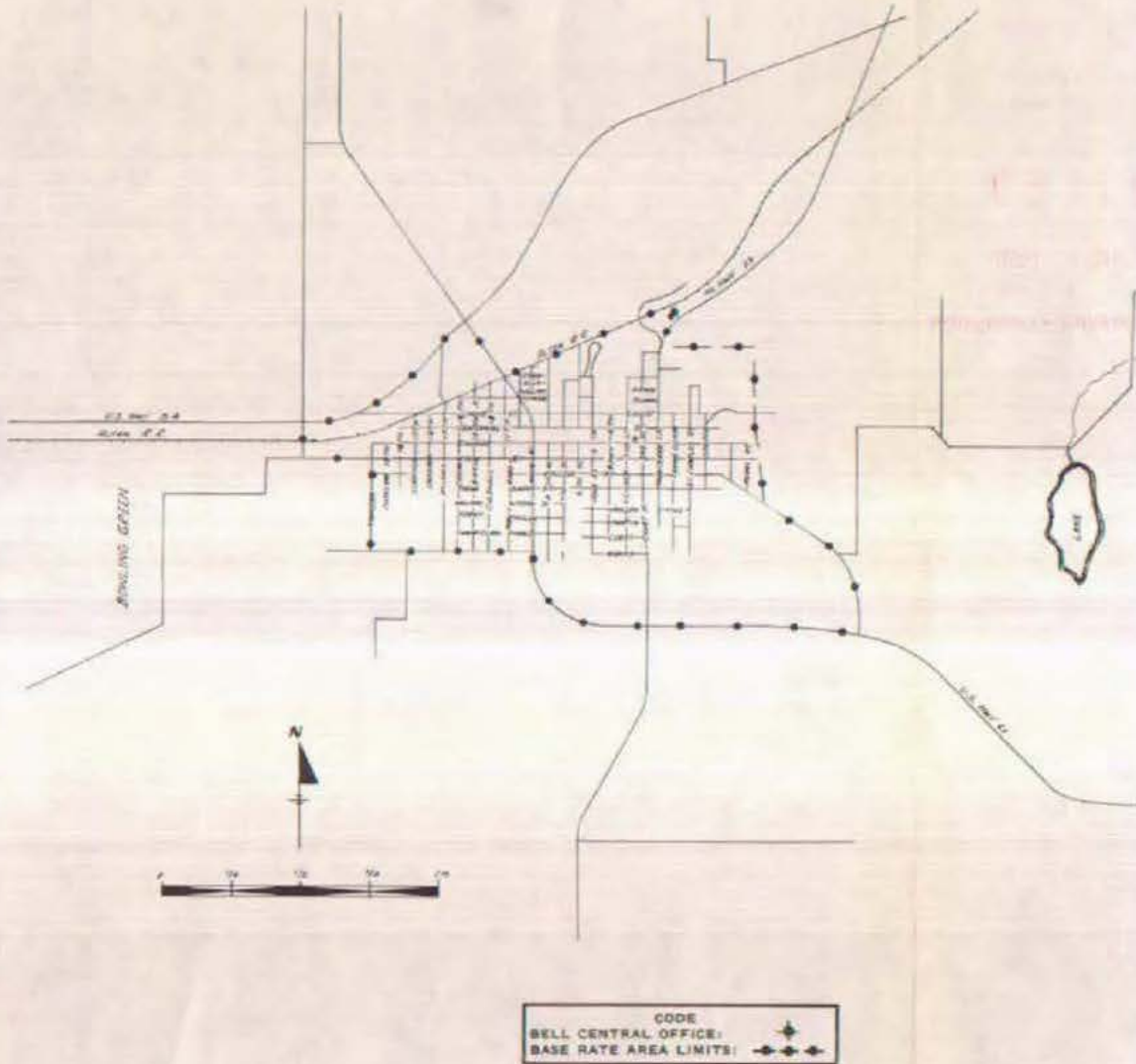
SEP 12 1998  
DEC 01 1998

Effective: \_\_\_\_\_

NO SUPPLEMENT TO THIS TARIFF WILL BE ISSUED EXCEPT FOR THE PURPOSE OF CANCELING THIS TARIFF.

Bowling Green, Missouri  
ORIGINAL SHEET 2  
REPLACING ORIGINAL SHEET 1-A

P. S. C.-Mo. No. 17  
BASE RATE AREA MAP



Issued: June 27, 1950

Effective: July 6, 1950

By H. R. TOWLES, General Manager  
Southwestern Bell Telephone Company  
St. Louis, Missouri

CANCELLED - Missouri Public Service Commission - 05/01/2024 - TN-2024-0278 - JI-2024-0142



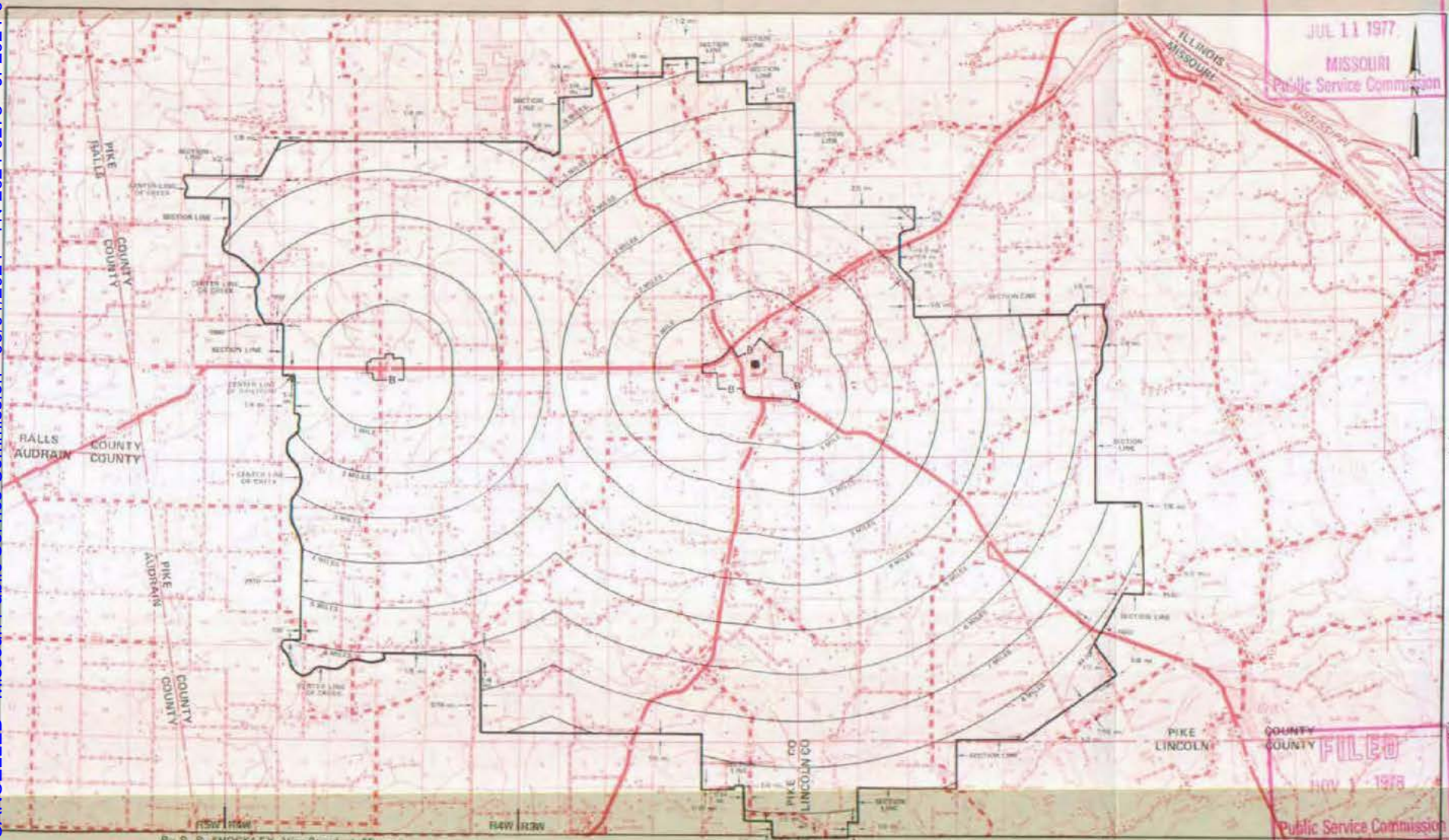
CANCELLED - Missouri Public Service Commission - 05/01/2024 - TN-2024-0278 - JI-2024-0142

NO SUPPLEMENT TO THIS TARIFF WILL BE ISSUED EXCEPT FOR THE PURPOSE OF CANCELING THIS TARIFF.

### P. S. C. Mo. No. 17 EXCHANGE AREA MAP

Bowling Green, Missouri

RECEIVED  
JUL 11 1977  
MISSOURI  
Public Service Commission



By R. R. SHOCKLEY, Vice President, Missouri  
Southwestern Bell Telephone Company  
St. Louis, Missouri

Issued July 11, 1977

FILED  
NOV 1 1978  
Public Service Commission

Effective: NOV 1 - 1978

SBC PSC MO #17  
Brookfield, Missouri  
2<sup>nd</sup> Revised Sheet 2  
Replacing 1<sup>st</sup> Sheet 2

# Non-Scannable Map

(Is viewable in the Data Center  
200 Madison Street, 1<sup>st</sup> Floor  
Jefferson City MO)

NO SUPPLEMENT TO THIS TARIFF WILL BE ISSUED EXCEPT FOR THE PURPOSE OF CANCELING THIS TARIFF.

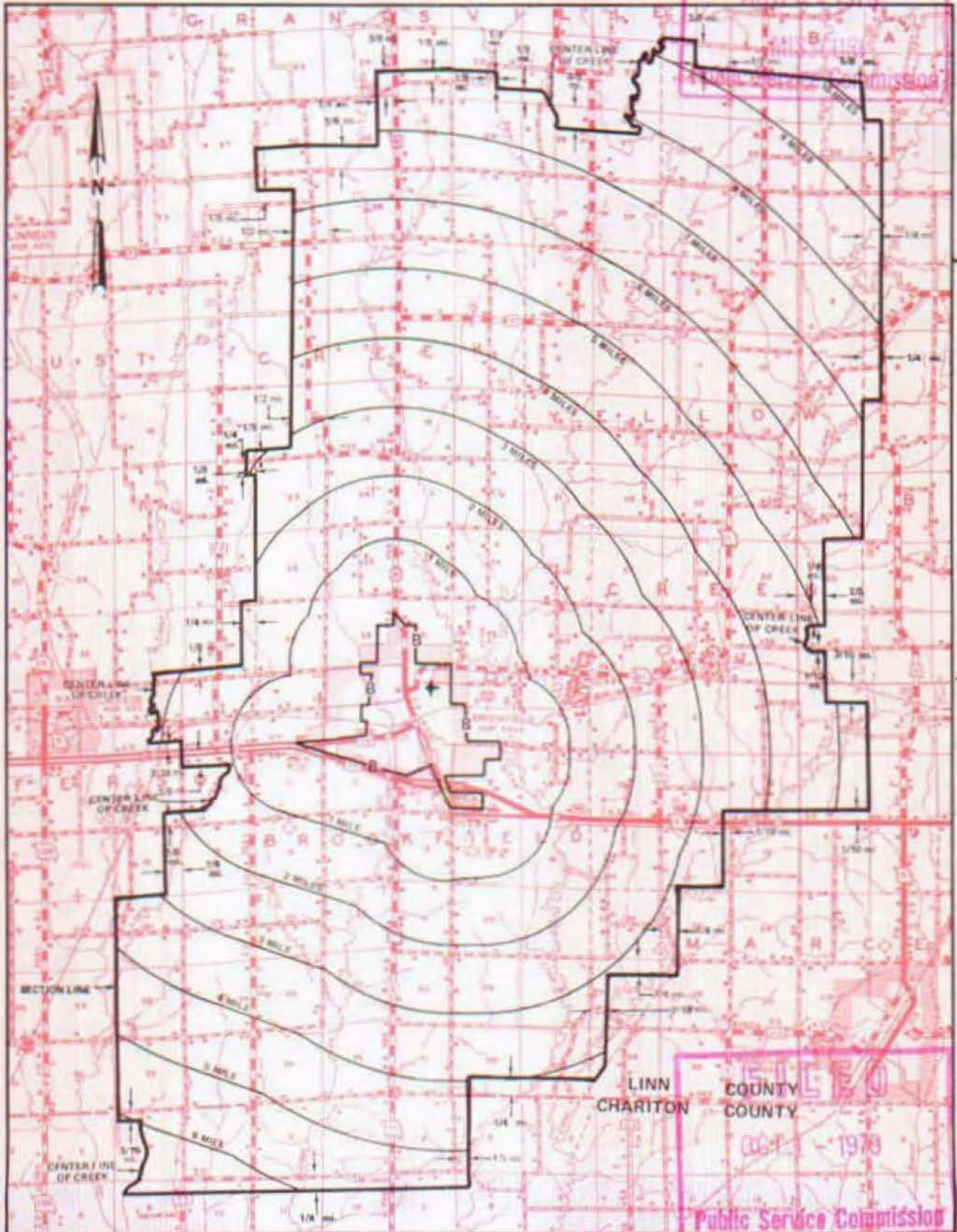
P. S. C. Mo. No. 17

EXCHANGE AREA MAP

Brookfield, Missouri

RECEIVED  
16th REVISED SHEET 3  
REPLACING 14th REVISED SHEET 3

AUG 24 1979



FILED  
OCT 1 1979  
Public Service Commission

R20W | R19W  
By R. R. SHOCKLEY, Vice President, Missouri  
Southwestern Bell Telephone Company

OCT 1 1979

CANCELLED - Missouri Public Service Commission - 05/01/2024 - TN-2024-0278 - JI-2024-0142

**P.S.C. Mo. - No. 17**  
**LOCAL EXCHANGE - MISSOURI PORTION TARIFF**

Southwestern Bell Telephone  
Company d/b/a AT&T Missouri

Section 2  
32nd Revised Sheet 1  
Replacing 31st Revised Sheet 1

**MISSOURI PORTION - BLYTHEVILLE, ARKANSAS EXCHANGE**

**1. GENERAL**

This Tariff is governed, except as otherwise specified herein, by all other Tariffs of the Southwestern Bell Telephone Company on file in the State of Missouri, which are hereby made a part of this Tariff. Unless otherwise specified, the charges quoted in this Tariff or in any other Missouri Tariff are for periods of one month, are payable monthly in advance and entitle the customer to exchange telephone service within the Blytheville Exchange Area and Extended Area Service to the Dell, Arkansas, Exchange.

This exchange area includes, in addition in the Missouri portion, certain territory in the State of Arkansas comprising the City of Blytheville and vicinity, as shown on the exchange area map for this exchange.

**2. RATES**

The rates for main and extension service do not include a Telephone Company-provided instrument, except for Semi-Public Service, which includes one station equipped with a coin-collecting device.

2.1 Within the Base Rate Area, As shown on The Related Exchange Area Map:

<u>Class of Service</u>	<u>Current Monthly Rates(1)(2)</u>	
Urban Service		
Business		
Flat Rate -		
One-Party Line	\$75.50	(CR)
Multiline	75.50	(CR)
PBX Trunk	43.00	

(1) For the period of November 26, 2008 through November 25, 2012, prices for residence basic local service in this exchange will be governed by Section 392.245.5(7) RSMo.

(2) For the period of November 26, 2008 through November 25, 2012, prices for business basic local service in this exchange will be governed by Section 392.245.5(7) RSMo.

**P.S.C. Mo. - No. 17**  
**LOCAL EXCHANGE - MISSOURI PORTION TARIFF**

Southwestern Bell Telephone  
Company d/b/a AT&T Missouri

Section 2  
31st Revised Sheet 1  
Replacing 30th Revised Sheet 1

**MISSOURI PORTION - BLYTHEVILLE, ARKANSAS EXCHANGE**

**1. GENERAL**

This Tariff is governed, except as otherwise specified herein, by all other Tariffs of the Southwestern Bell Telephone Company on file in the State of Missouri, which are hereby made a part of this Tariff. Unless otherwise specified, the charges quoted in this Tariff or in any other Missouri Tariff are for periods of one month, are payable monthly in advance and entitle the customer to exchange telephone service within the Blytheville Exchange Area and Extended Area Service to the Dell, Arkansas, Exchange.

This exchange area includes, in addition in the Missouri portion, certain territory in the State of Arkansas comprising the City of Blytheville and vicinity, as shown on the exchange area map for this exchange.

**2. RATES**

The rates for main and extension service do not include a Telephone Company-provided instrument, except for Semi-Public Service, which includes one station equipped with a coin-collecting device.

2.1 Within the Base Rate Area, As shown on The Related Exchange Area Map:

<u>Class of Service</u>	<u>Current Monthly Rates(1)(2)</u>	
Urban Service		
Business		
Flat Rate -		
One-Party Line	\$59.00	(CR)
Multiline	65.00	(CR)
PBX Trunk	43.00	

- (1) For the period of November 26, 2008 through November 25, 2012, prices for residence basic local service in this exchange will be governed by Section 392.245.5(7) RSMo.  
(2) For the period of November 26, 2008 through November 25, 2012, prices for business basic local service in this exchange will be governed by Section 392.245.5(7) RSMo.

Issued: June 25, 2013

Effective: July 5, 2013

CANCELLED  
December 1, 2013  
Missouri Public  
Service Commission  
JI-2014-0226

By JOHN SONDAG, President - Missouri  
St. Louis, Missouri

FILED  
Missouri Public  
Service Commission  
JI-2013-0608

**P.S.C. Mo. - No. 17**  
**LOCAL EXCHANGE - MISSOURI PORTION TARIFF**

Southwestern Bell Telephone  
Company d/b/a AT&T Missouri

Section 2  
30th Revised Sheet 1  
Replacing 29th Revised Sheet 1

**MISSOURI PORTION - BLYTHEVILLE, ARKANSAS EXCHANGE**

**1. GENERAL**

This Tariff is governed, except as otherwise specified herein, by all other Tariffs of the Southwestern Bell Telephone Company on file in the State of Missouri, which are hereby made a part of this Tariff. Unless otherwise specified, the charges quoted in this Tariff or in any other Missouri Tariff are for periods of one month, are payable monthly in advance and entitle the customer to exchange telephone service within the Blytheville Exchange Area and Extended Area Service to the Dell, Arkansas, Exchange.

This exchange area includes, in addition in the Missouri portion, certain territory in the State of Arkansas comprising the City of Blytheville and vicinity, as shown on the exchange area map for this exchange.

**2. RATES**

The rates for main and extension service do not include a Telephone Company-provided instrument, except for Semi-Public Service, which includes one station equipped with a coin-collecting device.

2.1 Within the Base Rate Area, As shown on The Related Exchange Area Map:

<u>Class of Service</u>	<u>Current Monthly Rates(1)(2)</u>	
Urban Service		
Business		
Flat Rate -		
One-Party Line	\$48.00	(CR)
Multiline	62.00	(CR)
PBX Trunk	43.00	

- (1) For the period of November 26, 2008 through November 25, 2012, prices for residence basic local service in this exchange will be governed by Section 392.245.5(7) RSMo.  
(2) For the period of November 26, 2008 through November 25, 2012, prices for business basic local service in this exchange will be governed by Section 392.245.5(7) RSMo.

Issued: December 24, 2012

Effective: January 3, 2013

CANCELLED  
July 5, 2013  
Missouri Public  
Service Commission  
JI-2013-0608

By JOHN SONDAG, President - Missouri  
St. Louis, Missouri

FILED  
Missouri Public  
Service Commission  
JI-2013-0285

**P.S.C. Mo. - No. 17**  
**LOCAL EXCHANGE - MISSOURI PORTION TARIFF**

Southwestern Bell Telephone  
Company d/b/a AT&T Missouri

Section 2  
29th Revised Sheet 1  
Replacing 28th Revised Sheet 1

**MISSOURI PORTION - BLYTHEVILLE, ARKANSAS EXCHANGE**

**1. GENERAL**

This Tariff is governed, except as otherwise specified herein, by all other Tariffs of the Southwestern Bell Telephone Company on file in the State of Missouri, which are hereby made a part of this Tariff. Unless otherwise specified, the charges quoted in this Tariff or in any other Missouri Tariff are for periods of one month, are payable monthly in advance and entitle the customer to exchange telephone service within the Blytheville Exchange Area and Extended Area Service to the Dell, Arkansas, Exchange.

This exchange area includes, in addition in the Missouri portion, certain territory in the State of Arkansas comprising the City of Blytheville and vicinity, as shown on the exchange area map for this exchange.

**2. RATES**

The rates for main and extension service do not include a Telephone Company-provided instrument, except for Semi-Public Service, which includes one station equipped with a coin-collecting device.

2.1 Within the Base Rate Area, As shown on The Related Exchange Area Map:

<u>Class of Service</u>	<u>Current Monthly Rates(1)(2)</u>	
Urban Service		
Business		
Flat Rate -		
One-Party Line	\$39.00	(CR)
Multiline	54.50	(CR)
PBX Trunk	43.00	

- (1) For the period of November 26, 2008 through November 25, 2012, prices for residence basic local service in this exchange will be governed by Section 392.245.5(7) RSMo.  
(2) For the period of November 26, 2008 through November 25, 2012, prices for business basic local service in this exchange will be governed by Section 392.245.5(7) RSMo.

Issued: June 25, 2012

Effective: July 5, 2012

CANCELLED  
January 3, 2013  
Missouri Public  
Service Commission  
JI-2013-0285

By JOHN SONDAG, President - Missouri  
St. Louis, Missouri

FILED  
Missouri Public  
Service Commission  
JI-2012-0834

**P.S.C. Mo. - No. 17**  
**LOCAL EXCHANGE - MISSOURI PORTION TARIFF**

Southwestern Bell Telephone  
Company d/b/a AT&T Missouri

Section 2  
28th Revised Sheet 1  
Replacing 27th Revised Sheet 1

**MISSOURI PORTION - BLYTHEVILLE, ARKANSAS EXCHANGE**

**1. GENERAL**

This Tariff is governed, except as otherwise specified herein, by all other Tariffs of the Southwestern Bell Telephone Company on file in the State of Missouri, which are hereby made a part of this Tariff. Unless otherwise specified, the charges quoted in this Tariff or in any other Missouri Tariff are for periods of one month, are payable monthly in advance and entitle the customer to exchange telephone service within the Blytheville Exchange Area and Extended Area Service to the Dell, Arkansas, Exchange.

This exchange area includes, in addition in the Missouri portion, certain territory in the State of Arkansas comprising the City of Blytheville and vicinity, as shown on the exchange area map for this exchange.

**2. RATES**

The rates for main and extension service do not include a Telephone Company-provided instrument, except for Semi-Public Service, which includes one station equipped with a coin-collecting device.

2.1 Within the Base Rate Area, As shown on The Related Exchange Area Map:

<u>Class of Service</u>	<u>Current Monthly Rates(1)(2)</u>	
Urban Service		
Business		
Flat Rate -		
One-Party Line	\$34.00	(CR)
Multiline	43.00	(CR)
PBX Trunk	43.00	(CR)

- (1) For the period of November 26, 2008 through November 25, 2012, prices for residence basic local service in this exchange will be governed by Section 392.245.5(7) RSMo.  
(2) For the period of November 26, 2008 through November 25, 2012, prices for business basic local service in this exchange will be governed by Section 392.245.5(7) RSMo.

Issued: October 28, 2011

Effective: November 9, 2011

CANCELLED  
July 5, 2012  
Missouri Public  
Service Commission  
JI-2012-0834

By JOHN SONDAG, President - Missouri  
St. Louis, Missouri

FILED  
Missouri Public  
Service Commission  
JI-2012-0194



**P.S.C. Mo. - No. 17**  
**LOCAL EXCHANGE - MISSOURI PORTION TARIFF**

Southwestern Bell Telephone  
Company d/b/a AT&T Missouri

Section 2  
27th Revised Sheet 1  
Replacing 26th Revised Sheet 1

**MISSOURI PORTION - BLYTHEVILLE, ARKANSAS EXCHANGE**

**1. GENERAL**

This Tariff is governed, except as otherwise specified herein, by all other Tariffs of the Southwestern Bell Telephone Company on file in the State of Missouri, which are hereby made a part of this Tariff. Unless otherwise specified, the charges quoted in this Tariff or in any other Missouri Tariff are for periods of one month, are payable monthly in advance and entitle the customer to exchange telephone service within the Blytheville Exchange Area and Extended Area Service to the Dell, Arkansas, Exchange.

This exchange area includes, in addition in the Missouri portion, certain territory in the State of Arkansas comprising the City of Blytheville and vicinity, as shown on the exchange area map for this exchange.

**2. RATES**

The rates for main and extension service do not include a Telephone Company-provided instrument, except for Semi-Public Service, which includes one station equipped with a coin-collecting device.

2.1 Within the Base Rate Area, As shown on The Related Exchange Area Map:

<u>Class of Service</u>	<u>Current Monthly Rates(1)(2)</u>	
Urban Service		
Business		
Flat Rate -		
One-Party Line	\$27.00	(CR)
Multiline	36.00	
PBX Trunk	31.32	

- (1) For the period of November 26, 2008 through November 25, 2012, prices for residence basic local service in this exchange will be governed by Section 392.245.5(7) RSMo.  
(2) For the period of November 26, 2008 through November 25, 2012, prices for business basic local service in this exchange will be governed by Section 392.245.5(7) RSMo.

Issued: May 18, 2011

**CANCELED**  
**November 9, 2011**  
**Missouri Public**  
**Service Commission**  
**JI-2012-0194**

By JOHN SONDAG, President - Missouri  
St. Louis, Missouri

Effective: May 28, 2011

**P.S.C. Mo. - No. 17**  
**LOCAL EXCHANGE - MISSOURI PORTION TARIFF**

Southwestern Bell Telephone  
Company d/b/a AT&T Missouri

Section 2  
26th Revised Sheet 1  
Replacing 25th Revised Sheet 1

**MISSOURI PORTION - BLYTHEVILLE, ARKANSAS EXCHANGE**

**1. GENERAL**

This Tariff is governed, except as otherwise specified herein, by all other Tariffs of the Southwestern Bell Telephone Company on file in the State of Missouri, which are hereby made a part of this Tariff. Unless otherwise specified, the charges quoted in this Tariff or in any other Missouri Tariff are for periods of one month, are payable monthly in advance and entitle the customer to exchange telephone service within the Blytheville Exchange Area and Extended Area Service to the Dell, Arkansas, Exchange.

This exchange area includes, in addition in the Missouri portion, certain territory in the State of Arkansas comprising the City of Blytheville and vicinity, as shown on the exchange area map for this exchange.

**2. RATES**

The rates for main and extension service do not include a Telephone Company-provided instrument, except for Semi-Public Service, which includes one station equipped with a coin-collecting device.

2.1 Within the Base Rate Area, As shown on The Related Exchange Area Map:

<u>Class of Service</u>	<u>Current Monthly Rates(1)(2)</u>	
Urban Service		
Business		
Flat Rate -		
One-Party Line	\$26.00	(CR)
Multiline	36.00	(CR)
PBX Trunk	31.32	

- (1) For the period of November 26, 2008 through November 25, 2012, prices for residence basic local service in this exchange will be governed by Section 392.245.5(7) RSMo.  
(2) For the period of November 26, 2008 through November 25, 2012, prices for business basic local service in this exchange will be governed by Section 392.245.5(7) RSMo.

Issued: December 28, 2009

Effective: January 7, 2010

CANCELLED  
May 28, 2011  
Missouri Public  
Service Commission  
JI-2011-0578

By DAVID NICHOLS, President - Missouri  
St. Louis, Missouri

FILED  
Missouri Public  
Service Commission  
JI-2010-0424

**P.S.C. Mo. - No. 17**  
**LOCAL EXCHANGE - MISSOURI PORTION TARIFF**

Southwestern Bell Telephone  
Company d/b/a AT&T Missouri

Section 2  
25th Revised Sheet 1  
Replacing 24th Revised Sheet 1

**MISSOURI PORTION - BLYTHEVILLE, ARKANSAS EXCHANGE**

(AT)

**1. GENERAL**

This Tariff is governed, except as otherwise specified herein, by all other Tariffs of the Southwestern Bell Telephone Company on file in the State of Missouri, which are hereby made a part of this Tariff. Unless otherwise specified, the charges quoted in this Tariff or in any other Missouri Tariff are for periods of one month, are payable monthly in advance and entitle the customer to exchange telephone service within the Blytheville Exchange Area and Extended Area Service to the Dell, Arkansas, Exchange.

This exchange area includes, in addition in the Missouri portion, certain territory in the State of Arkansas comprising the City of Blytheville and vicinity, as shown on the exchange area map for this exchange.

**2. RATES**

The rates for main and extension service do not include a Telephone Company-provided instrument, except for Semi-Public Service, which includes one station equipped with a coin-collecting device.

2.1 Within the Base Rate Area, As shown on The Related Exchange Area Map:

<u>Class of Service</u>	<u>Current Monthly Rates(1)(2)</u>	(AT)
Urban Service		
Business		
Flat Rate -		
One-Party Line	\$24.71	
Multiline	31.32	
PBX Trunk	31.32	

- (1) For the period of November 26, 2008 through November 25, 2012, prices for residence basic local service in this exchange will be governed by Section 392.245.5(7) RSMo. (AT)
- (2) For the period of November 26, 2008 through November 25, 2012, prices for business basic local service in this exchange will be governed by Section 392.245.5(7) RSMo. (AT)

Issued: July 2, 2009

By DAVID NICHOLS, President - Missouri  
St. Louis, Missouri

Effective: July 12, 2009

CANCELLED  
January 7, 2010  
Missouri Public  
Service Commission  
JI-2010-0424

Filed  
Missouri Public  
Service Commission  
JI-2010-0004

No Supplement to this tariff will be issued except for the purpose of canceling this tariff.

Missouri Portion-  
Blytheville, Arkansas Exchange  
24th Revised Sheet 1  
Replacing 23rd Revised Sheet 1

(RT)

LOCAL EXCHANGE TARIFF

1.1. GENERAL

This Tariff is governed, except as otherwise specified herein, by all other Tariffs of the Southwestern Bell Telephone Company on file in the State of Missouri, which are hereby made a part of this Tariff. Unless otherwise specified, the charges quoted in this Tariff or in any other Missouri Tariff are for periods of one month, are payable monthly in advance and entitle the customer to exchange telephone service within the Blytheville Exchange Area and Extended Area Service to the Dell, Arkansas, Exchange.

This exchange area includes, in addition in the Missouri portion, certain territory in the State of Arkansas comprising the City of Blytheville and vicinity, as shown on the exchange area map for this exchange.

1.2 RATES

The rates for main and extension service do not include a Telephone Company-provided instrument, except for Semi-Public Service, which includes one station equipped with a coin-collecting device.

1.2.1 Within the Base Rate Area, As shown on The Related Exchange Area Map:

<u>Class of Service</u>	<u>Current Monthly Rates(1)</u>
Urban Service	
Business	
Flat Rate -	
One-Party Line	\$24.71(CR)
Multiline	31.32
PBX Trunk	31.32

(1) See Sheet 2 for maximum allowable rates.

Issued: October 17, 2005

Effective: December 1, 2005

By CINDY BRINKLEY, President-SBC Missouri  
Southwestern Bell Telephone, L.P., d/b/a SBC Missouri  
St. Louis, Missouri

No Supplement to this tariff will be issued except for the purpose of canceling this tariff.

Missouri Portion-  
Blytheville, Arkansas, Exchange  
23rd Revised Sheet 1  
Replacing 22nd Revised Sheet 1

SOUTHWESTERN BELL TELEPHONE COMPANY  
LOCAL EXCHANGE TARIFF

1.1. GENERAL

This Tariff is governed, except as otherwise specified herein, by all other Tariffs of the Southwestern Bell Telephone Company on file in the State of Missouri, which are hereby made a part of this Tariff. Unless otherwise specified, the charges quoted in this Tariff or in any other Missouri Tariff are for periods of one month, are payable monthly in advance and entitle the customer to exchange telephone service within the Blytheville Exchange Area and Extended Area Service to the Dell, Arkansas, Exchange.

This exchange area includes, in addition in the Missouri portion, certain territory in the State of Arkansas comprising the City of Blytheville and vicinity, as shown on the exchange area map for this exchange.

1.2 RATES

The rates for main and extension service do not include a Telephone Company-provided instrument, except for Semi-Public Service, which includes one station equipped with a coin-collecting device.

1.2.1 Within the Base Rate Area, As shown on The Related Exchange Area Map:

<u>Class of Service</u>	<u>Current Monthly Rates(1)</u>
Urban Service	
Business	
Flat Rate -	
One-Party Line	\$25.21(CR)
Multiline	31.32
PBX Trunk	31.32

**CANCELLED**

DEC 01 2005

By 24<sup>th</sup> RS 1  
Public Service Commission  
MISSOURI

(1) See Sheet 2 for maximum allowable rates.

Issued: October 15, 2004

Effective: December 1, 2004

By CINDY BRINKLEY, President-SBC Missouri  
Southwestern Bell Telephone, L.P., d/b/a SBC Missouri  
St. Louis, Missouri

**FILED  
MO PSC**

No Supplement to this tariff will be issued except for the purpose of canceling this tariff.

Missouri Portion-  
Blytheville, Arkansas, Exchange  
22nd Revised Sheet 1  
Replacing 21st Revised Sheet 1  
**Missouri Public**

SOUTHWESTERN BELL TELEPHONE COMPANY  
LOCAL EXCHANGE TARIFF

REC'D OCT 15 2003

1.1. GENERAL

This Tariff is governed, except as otherwise specified herein, by all other Tariffs of the **Service Commission** Southwestern Bell Telephone Company on file in the State of Missouri, which are hereby made a part of this Tariff. Unless otherwise specified, the charges quoted in this Tariff or in any other Missouri Tariff are for periods of one month, are payable monthly in advance and entitle the customer to exchange telephone service within the Blytheville Exchange Area and Extended Area Service to the Dell, Arkansas, Exchange.

This exchange area includes, in addition in the Missouri portion, certain territory in the State of Arkansas comprising the City of Blytheville and vicinity, as shown on the exchange area map for this exchange.

1.2 RATES

The rates for main and extension service do not include a Telephone Company-provided instrument, except for Semi-Public Service, which includes one station equipped with a coin-collecting device.

1.2.1 Within the Base Rate Area, As shown on The Related Exchange Area Map:

<u>Class of Service</u>	<u>Current Monthly Rates(1)</u>
Urban Service	
Business	
Flat Rate -	
One-Party Line	\$25.90(CR)
Multiline	31.32
PBX Trunk	31.32

**CANCELLED**

DEC 01 2004  
By *23rd RSI*  
Public Service Commission  
MISSOURI

(1) See Sheet 2 for maximum allowable rates.

Issued: October 15, 2003

Effective: December 1, 2003

By CINDY BRINKLEY, President-SBC Missouri  
Southwestern Bell Telephone, L.P., d/b/a SBC Missouri  
St. Louis, Missouri

Missouri Public  
Service Commission

FILED DEC 01 2003

No Supplement to this tariff will be issued except for the purpose of canceling this tariff.

Missouri Portion-  
Blytheville Arkansas, Exchange  
21st Revised Sheet 1  
Replacing 20th Revised Sheet 1

SOUTHWESTERN BELL TELEPHONE COMPANY  
LOCAL EXCHANGE TARIFF

Missouri Public  
Service Commission

REC'D OCT 15 2002

1.1. GENERAL

This Tariff is governed, except as otherwise specified herein, by all other Tariffs of the Southwestern Bell Telephone Company on file in the State of Missouri, which are hereby made a part of this Tariff. Unless otherwise specified, the charges quoted in this Tariff or in any other Missouri Tariff are for periods of one month, are payable monthly in advance and entitle the customer to exchange telephone service within the Blytheville Exchange Area and Extended Area Service to the Dell, Arkansas, Exchange.

This exchange area includes, in addition in the Missouri portion, certain territory in the State of Arkansas comprising the City of Blytheville and vicinity, as shown on the exchange area map for this exchange.

1.2 RATES

The rates for main and extension service do not include a Telephone Company-provided instrument, except for Semi-Public Service, which includes one station equipped with a coin-collecting device.

1.2.1 Within the Base Rate Area, As shown on The Related Exchange Area Map:

<u>Class of Service</u>	<u>Current Monthly Rates(1)</u>
Urban Service	
Business	
Flat Rate -	
One-Party Line	\$25.91(CR)
Multiline	31.32
PBX Trunk	31.32

**CANCELLED**

DEC 01 2003

2nd 851  
Missouri Public Service Commission  
MISSOURI

Missouri Public  
Service Commission

FILED DEC 01 2002

(1) See Sheet 2 for maximum allowable rates.

Issued: October 15, 2002

Effective: December 1, 2002

By CINDY BRINKLEY, President-Missouri  
Southwestern Bell Telephone, L.P., d/b/a Southwestern Bell Telephone Company  
St. Louis, Missouri

No supplement to this tariff will be issued except for the purpose of canceling this tariff.

MISSOURI PORTION- BLYTHEVILLE,  
ARKANSAS, EXCHANGE  
20th Revised Sheet 1  
Replacing 19th Revised Sheet 1

SOUTHWESTERN BELL TELEPHONE COMPANY  
LOCAL EXCHANGE TARIFF

Missouri Public

REC'D OCT 01 2001

1.1 GENERAL

Service Commission

This Tariff is governed, except as otherwise specified herein, by all other Tariffs of the Southwestern Bell Telephone Company on file in the State of Missouri, which are hereby made a part of this Tariff. Unless otherwise specified, the charges quoted in this Tariff or in any other Missouri Tariff are for periods of one month, are payable monthly in advance and entitle the customer to exchange telephone service within the Blytheville Exchange Area and Extended Area Service to the Dell, Arkansas, Exchange.

This exchange area includes, in addition in the Missouri portion, certain territory in the State of Arkansas comprising the City of Blytheville and vicinity, as shown on the exchange area map for this exchange.

1.2 RATES

The rates for main and extension service do not include a Telephone Company-provided instrument, except for Semi-Public Service, which includes one station equipped with a coin-collecting device.

1.2.1 Within the Base Rate Area, As shown on The Related Exchange Area Map:

<u>CLASS OF SERVICE</u>	<u>CURRENT MONTHLY RATES (1)</u>
Urban Service	
Business	
Flat Rate -	
One-Party Line	\$25.68(CR)
Multiline	31.32
PBX Trunk	31.32

CANCELLED

DEC 01 2002  
219RS1  
Public Service Commission  
MISSOURI

(1) See Sheet 2 for maximum allowable rates.

Issued: October 1, 2001

Effective: December 1, 2001

By JAN NEWTON, President-Missouri  
Southwestern Bell Telephone Company  
St. Louis, Missouri

Missouri Public

FILED DEC 01 2001

Service Commission



No supplement to this tariff will be issued except for the purpose of canceling this tariff.

MISSOURI PORTION- BLYTHEVILLE,  
 ARKANSAS, EXCHANGE  
 19th Revised Sheet 1  
 Replacing 18th Revised Sheet 1

SOUTHWESTERN BELL TELEPHONE COMPANY  
 LOCAL EXCHANGE TARIFF **Missouri Public Service Commission**

REC'D OCT 02 2000

1.1 GENERAL

This Tariff is governed, except as otherwise specified herein, by all other Tariffs of the Southwestern Bell Telephone Company on file in the State of Missouri, which are hereby made a part of this Tariff. Unless otherwise specified, the charges quoted in this Tariff or in any other Missouri Tariff are for periods of one month, are payable monthly in advance and entitle the customer to exchange telephone service within the Blytheville Exchange Area and Extended Area Service to the Dell, Arkansas, Exchange.

This exchange area includes, in addition in the Missouri portion, certain territory in the State of Arkansas comprising the City of Blytheville and vicinity, as shown on the exchange area map for this exchange.

1.2 RATES

The rates for main and extension service do not include a Telephone Company-provided instrument, except for Semi-Public Service, which includes one station equipped with a coin-collecting device.

1.2.1 Within the Base Rate Area, As shown on The Related Exchange Area Map:

(AT)

<u>Class Of Service</u>	<u>Current Monthly Rates (1)</u>
Urban Service	
Business	
Flat Rate -	
One-Party Line	\$25.87(CR)
Multiline	31.32
PBX Trunk	31.32

**CANCELLED**

DEC 01 2001  
 Public Service Commission  
 MISSOURI

Missouri Public Service Commission

FILED DEC 01 2000

(AT)

(1) See Sheet 2 for maximum allowable rates.

Issued: October 2, 2000

Effective: December 1, 2000

By JAN NEWTON, President-Missouri  
 Southwestern Bell Telephone Company  
 St. Louis, Missouri

No supplement to this tariff will be issued except for the purpose of canceling this tariff.

MISSOURI PORTION-BLYTHEVILLE, ARKANSAS, EXCHANGE  
18th Revised Sheet 1  
Replacing 17th Revised Sheet 1

SOUTHWESTERN BELL TELEPHONE COMPANY  
LOCAL EXCHANGE TARIFF

1.1 GENERAL

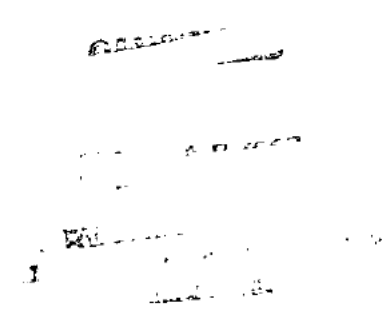
This Tariff is governed, except as otherwise specified herein, by all other Tariffs of the Southwestern Bell Telephone Company on file in the State of Missouri, which are hereby made a part of this Tariff. Unless otherwise specified, the charges quoted in this Tariff or in any other Missouri Tariff are for periods of one month, are payable monthly in advance and entitle the customer to exchange telephone service within the Blytheville Exchange Area and Extended Area Service to the Dell, Arkansas, Exchange.

This exchange area includes, in addition in the Missouri portion, certain territory in the State of Arkansas comprising the City of Blytheville and vicinity, as shown on the exchange area map for this exchange.

1.2 RATES

The rates for main and extension service do not include a Telephone Company-provided instrument except for Semi-Public Service, which includes one station equipped with a coin-collecting device.

(RT)  
(RT)  
(RT)  
(RT)



1.2.1 Within The Base Rate Area, As Shown On The Related Exchange Area Map:

<u>Class of Service</u>	<u>Monthly Rates</u>
Urban Service	
Business	
Flat Rate -	
One-Party Line . . . . .	(CR) \$26.11
Multiline. . . . .	(CR) 31.32
PBX Trunk . . . . .	31.32

**CANCELLED**

DEC 01 2000

By: *R.D.S.*  
Public Service Commission  
MISSOURI

(DR)  
(MR)

**FILED**

Issued: AUG 25 1988

Effective: ~~SEP 30 1988~~  
DEC 1 1988

DEC 1 1988

By R. D. BARRON, President-Missouri Division  
Southwestern Bell Telephone Company  
St. Louis, Missouri

Public Service Commission

**P.S.C. Mo. - No. 17**  
**LOCAL EXCHANGE - MISSOURI PORTION TARIFF**

Southwestern Bell Telephone  
Company d/b/a AT&T Missouri

Section 2  
23rd Revised Sheet 1.1  
Replacing 22nd Revised Sheet 1.1

---

**MISSOURI PORTION - BLYTHEVILLE, ARKANSAS EXCHANGE**

**2. RATES (cont'd)**

2.1 Within the Base Rate Area, As shown on The Related Exchange Area Map: (cont'd)

<u>Class of Service</u>	<u>Current Monthly Rates(1)(2)</u>	
Urban Service (cont'd)		
Residence		
Flat Rate -	\$24.00	
One-Party Line	(3)	(CR)
Multiline	15.00	
PBX Trunk	15.00	

- (1) For the period of November 26, 2008 through November 25, 2012, prices for residence basic local service in this exchange will be governed by Section 392.245.5(7) RSMo.
- (2) For the period of November 26, 2008 through November 25, 2012, prices for business basic local service in this exchange will be governed by Section 392.245.5(7) RSMo.
- (3) A customer eligible under established criteria can receive a discount from his or her bill for residential essential local telecommunications services, in accordance with P.S.C. Mo. – No. 24, Local Exchange Tariff, Section 1.2.2.E, regarding Lifeline Service.

---

Issued: December 24, 2013

**CANCELLED**  
May 1, 2014  
Missouri Public  
Service Commission  
JI-2014-0379

By JOHN SONDAG, President - Missouri  
St. Louis, Missouri

Effective: January 3, 2014

**FILED**  
Missouri Public  
Service Commission  
JI-2014-0269

P.S.C. Mo. - No. 17  
LOCAL EXCHANGE - MISSOURI PORTION TARIFF

Southwestern Bell Telephone  
Company d/b/a AT&T Missouri

Section 2  
22nd Revised Sheet 1.1  
Replacing 21st Revised Sheet 1.1

---

MISSOURI PORTION - BLYTHEVILLE, ARKANSAS EXCHANGE

2. RATES (cont'd)

2.1 Within the Base Rate Area, As shown on The Related Exchange Area Map: (cont'd)

<u>Class of Service</u>	<u>Current Monthly Rates(1)(2)</u>	
Urban Service (cont'd)		
Residence		
Flat Rate -	\$23.00	(CR)
One-Party Line	(3)	
Multiline	15.00	
PBX Trunk	15.00	

- (1) For the period of November 26, 2008 through November 25, 2012, prices for residence basic local service in this exchange will be governed by Section 392.245.5(7) RSMo.
- (2) For the period of November 26, 2008 through November 25, 2012, prices for business basic local service in this exchange will be governed by Section 392.245.5(7) RSMo.
- (3) A customer eligible under established criteria can receive a discount from his or her bill for residential essential local telecommunications services, in accordance with P.S.C. Mo. – No. 24, Local Exchange Tariff, Section 1.2.2.E, regarding Lifeline Service.

---

Issued: December 24, 2012

CANCELLED  
January 3, 2014  
Missouri Public  
Service Commission  
JI-2014-0269

By JOHN SONDAG, President - Missouri  
St. Louis, Missouri

Effective: January 3, 2013

FILED  
Missouri Public  
Service Commission  
JI-2013-0285

P.S.C. Mo. - No. 17  
LOCAL EXCHANGE - MISSOURI PORTION TARIFF

Southwestern Bell Telephone  
Company d/b/a AT&T Missouri

Section 2  
21st Revised Sheet 1.1  
Replacing 20th Revised Sheet 1.1

---

MISSOURI PORTION - BLYTHEVILLE, ARKANSAS EXCHANGE

2. RATES (cont'd)

2.1 Within the Base Rate Area, As shown on The Related Exchange Area Map: (cont'd)

<u>Class of Service</u>	<u>Current Monthly Rates(1)(2)</u>	
Urban Service (cont'd)		
Residence		
Flat Rate -	\$21.00	(CR)
One-Party Line	(3)	
Multiline	15.00	
PBX Trunk	15.00	

- (1) For the period of November 26, 2008 through November 25, 2012, prices for residence basic local service in this exchange will be governed by Section 392.245.5(7) RSMo.
- (2) For the period of November 26, 2008 through November 25, 2012, prices for business basic local service in this exchange will be governed by Section 392.245.5(7) RSMo.
- (3) A customer eligible under established criteria can receive a discount from his or her bill for residential essential local telecommunications services, in accordance with P.S.C. Mo. – No. 24, Local Exchange Tariff, Section 1.2.2.E, regarding Lifeline Service.

---

Issued: July 3, 2012

By JOHN SONDAG, President - Missouri  
St. Louis, Missouri

Effective: July 13, 2012

CANCELLED  
January 3, 2013  
Missouri Public  
Service Commission  
JI-2013-0285

FILED  
Missouri Public  
Service Commission  
JI-2013-0013

P.S.C. Mo. - No. 17  
LOCAL EXCHANGE - MISSOURI PORTION TARIFF

Southwestern Bell Telephone  
Company d/b/a AT&T Missouri

Section 2  
20th Revised Sheet 1.1  
Replacing 19th Revised Sheet 1.1

---

MISSOURI PORTION - BLYTHEVILLE, ARKANSAS EXCHANGE

2. RATES (cont'd)

2.1 Within the Base Rate Area, As shown on The Related Exchange Area Map: (cont'd)

<u>Class of Service</u>	<u>Current Monthly Rates(1)(2)</u>	
Urban Service (cont'd)		
Residence		
Flat Rate -	\$18.50	(CR)
One-Party Line	(3)	
Multiline	15.00	
PBX Trunk	15.00	

- (1) For the period of November 26, 2008 through November 25, 2012, prices for residence basic local service in this exchange will be governed by Section 392.245.5(7) RSMo.
- (2) For the period of November 26, 2008 through November 25, 2012, prices for business basic local service in this exchange will be governed by Section 392.245.5(7) RSMo.
- (3) A customer eligible under established criteria can receive a discount from his or her bill for residential essential local telecommunications services, in accordance with P.S.C. Mo. – No. 24, Local Exchange Tariff, Section 1.2.2.E, regarding Lifeline Service.

---

Issued: July 1, 2011

Effective: July 13, 2011

CANCELLED  
July 13, 2012  
Missouri Public  
Service Commission  
JI-2013-0013

By JOHN SONDAG, President - Missouri  
St. Louis, Missouri

FILED  
Missouri Public  
Service Commission  
JI-2011-0671

**P.S.C. Mo. - No. 17**  
**LOCAL EXCHANGE - MISSOURI PORTION TARIFF**

Southwestern Bell Telephone  
Company d/b/a AT&T Missouri

Section 2  
19th Revised Sheet 1.1  
Replacing 18th Revised Sheet 1.1

---

**MISSOURI PORTION - BLYTHEVILLE, ARKANSAS EXCHANGE**

**2. RATES (cont'd)**

2.1 Within the Base Rate Area, As shown on The Related Exchange Area Map: (cont'd)

<u>Class of Service</u>	<u>Current Monthly Rates(1)(2)</u>	
Urban Service (cont'd)		
Residence		
Flat Rate -	\$16.83	
One-Party Line	(3)	(CR)
Multiline	15.00	
PBX Trunk	15.00	

- (1) For the period of November 26, 2008 through November 25, 2012, prices for residence basic local service in this exchange will be governed by Section 392.245.5(7) RSMo.
- (2) For the period of November 26, 2008 through November 25, 2012, prices for business basic local service in this exchange will be governed by Section 392.245.5(7) RSMo.
- (3) A customer eligible under established criteria can receive a discount from his or her bill for residential essential local telecommunications services, in accordance with P.S.C. Mo. – No. 24, Local Exchange Tariff, Section 1.2.2.E, regarding Lifeline Service.

---

Issued: June 29, 2010

**CANCELED**  
**JI-2011-0671**  
**Missouri Public**  
**Service Commission**  
**JI-2011-0671**

By DAVID NICHOLS, President - Missouri  
St. Louis, Missouri

Effective: July 9, 2010

**FILED**  
**Missouri Public**  
**Service Commission**  
**JI-2010-0755**

**P.S.C. Mo. - No. 17**  
**LOCAL EXCHANGE - MISSOURI PORTION TARIFF**

Southwestern Bell Telephone  
Company d/b/a AT&T Missouri

Section 2  
18th Revised Sheet 1.1  
Replacing 17th Revised Sheet 1.1

---

17th Revised Sheet 1.1 was previously 17th Revised Sheet 1.01 (AT)

**MISSOURI PORTION - BLYTHEVILLE, ARKANSAS EXCHANGE** (AT)

**2. RATES (cont'd)**

2.1 Within the Base Rate Area, As shown on The Related Exchange Area Map: (cont'd)

<u>Class of Service</u>	<u>Current Monthly Rates(1)(2)</u>	(AT)
Urban Service (cont'd)		
Residence		
Flat Rate -	\$13.83	(CR)
One-Party Line	(3)	(CT)
Multiline	15.00	
PBX Trunk	15.00	

- (1) For the period of November 26, 2008 through November 25, 2012, prices for residence basic local service in this exchange will be governed by Section 392.245.5(7) RSMo. (AT)
- (2) For the period of November 26, 2008 through November 25, 2012, prices for business basic local service in this exchange will be governed by Section 392.245.5(7) RSMo. (AT)
- (3) A customer eligible under established criteria can receive a discount from his or her bill for residential essential local telecommunications services, in accordance with P.S.C. Mo. – No. 24, Local Exchange Tariff, Section 1.2.2.E, regarding Lifeline Service. (CT)



No Supplement to this tariff will be issued except for the purpose of canceling this tariff.

Missouri Portion-  
Blytheville, Arkansas Exchange  
17th Revised Sheet 1.01  
Replacing 16th Revised Sheet 1.01

LOCAL EXCHANGE TARIFF

1.2 RATES (cont'd)

1.2.1 Within the Base Rate Area, As shown on The Related Exchange Area Map: (cont'd)

<u>Class of Service</u>	<u>Current Monthly Rates(1)</u>
Urban Service (cont'd)	
Residence	
Flat Rate -	
One-Party Line	\$11.83(CR)
Lifeline	(2)
Multiline	15.00
PBX Trunk	15.00

- (1) See Sheet 2 for maximum allowable rates.
- (2) A customer eligible under established criteria can receive a discount from his or her bill for residential essential local telecommunications services, in accordance with P.S.C. Mo. – No. 24, Local Exchange Tariff, Section 1.2.2.E, regarding Lifeline Service.

Issued: October 17, 2005

Effective: December 1, 2005

By CINDY BRINKLEY, President-SBC Missouri  
Southwestern Bell Telephone, L.P., d/b/a SBC Missouri  
St. Louis, Missouri

No Supplement to this tariff will be issued except for the purpose of canceling this tariff.

Missouri Portion-  
Blytheville, Arkansas Exchange  
16th Revised Sheet 1.01  
Replacing 15th Revised Sheet 1.01

(RT)

LOCAL EXCHANGE TARIFF

1.2 RATES (cont'd)

1.2.1 Within the Base Rate Area, As shown on The Related Exchange Area Map: (cont'd)

<u>Class of Service</u>	<u>Current Monthly Rates(1)</u>
Urban Service (cont'd)	
Residence	
Flat Rate -	
One-Party Line	\$12.07
Lifeline	(2)
Multiline	15.00
PBX Trunk	15.00

(CT)(CR)

**CANCELLED**

DEC 01 2005  
By *17th RS 1.01*  
**Public Service Commission**  
**MISSOURI**

- (1) See Sheet 2 for maximum allowable rates.
- (AT) (2) A customer eligible under established criteria can receive a discount from his or her bill for residential essential local telecommunications services, in accordance with P.S.C. Mo. - No. 24, Local Exchange Tariff, Section 1.2.2.E, regarding Lifeline Service.

Issued: April 1, 2005

Effective: May 1, 2005

By CINDY BRINKLEY, President-SBC Missouri  
Southwestern Bell Telephone, L.P., d/b/a SBC Missouri  
St. Louis, Missouri

TO-1998-0329

**FILED**  
**MO PSC**

No Supplement to this tariff will be issued except for the purpose of canceling this tariff.

Missouri Portion-  
Blytheville, Arkansas, Exchange  
15th Revised Sheet 1.01  
Replacing 14th Revised Sheet 1.01

SOUTHWESTERN BELL TELEPHONE COMPANY  
LOCAL EXCHANGE TARIFF

1.2 RATES (cont'd)

1.2.1 Within the Base Rate Area, As shown on The Related Exchange Area Map: (cont'd)

<u>Class of Service</u>	<u>Current Monthly Rates(1)</u>
Urban Service (cont'd)	
Residence	
Flat Rate -	
One-Party Line	\$12.07(CR)
Lifeline(2)	8.57(CR)
Multiline	15.00
PBX Trunk	15.00

**CANCELLED**

MAY 01 2005  
By *Walters 1.01*  
Public Service Commission  
MISSOURI

- (1) See Sheet 2 for maximum allowable rates.
- (2) See P.S.C. Mo. - No. 24, Local Exchange Tariff, Section 1.2.2.E, for description, terms and conditions related to Lifeline Service.

Issued: October 15, 2004

Effective: December 1, 2004

By CINDY BRINKLEY, President-SBC Missouri  
Southwestern Bell Telephone, L.P., d/b/a SBC Missouri  
St. Louis, Missouri

**FILED  
MO PSC**

No Supplement to this tariff will be issued except for the purpose of canceling this tariff.

Missouri Portion-  
Blytheville, Arkansas, Exchange  
14th Revised Sheet 1.01  
Replacing 13th Revised Sheet 1.01  
Missouri Public

SOUTHWESTERN BELL TELEPHONE COMPANY Service Commission  
LOCAL EXCHANGE TARIFF

REC'D MAY 10 2004

1.2 RATES (cont'd)

1.2.1 Within the Base Rate Area, As shown on The Related Exchange Area Map: (cont'd)

	<u>Class of Service</u>	<u>Current Monthly Rates(1)</u>
	Urban Service (cont'd)	
	Residence	
	Flat Rate -	
(AT)	One-Party Line	\$12.40
	Lifeline(2)	8.90(NR)
	Multiline	15.00
	PBX Trunk	15.00

**CANCELLED**

DEC 01 2004  
By *SWRS 1.01*  
Public Service Commission  
MISSOURI

- (1) See Sheet 2 for maximum allowable rates.
- (AT) (2) See P.S.C. Mo. – No. 24, Local Exchange Tariff, Section 1.2.2.E, for description, terms and conditions related to Lifeline Service.

Issued: May 10, 2004

Effective: June 9, 2004

By CINDY BRINKLEY, President-SBC Missouri  
Southwestern Bell Telephone, L.P., d/b/a SBC Missouri  
St. Louis, Missouri

Missouri Public  
Service Commission

FILED JUN 09 2004

No Supplement to this tariff will be issued except for the purpose of canceling this tariff.

Missouri Portion-  
Blytheville, Arkansas, Exchange  
13th Revised Sheet 1.01  
Replacing 12th Revised Sheet 1.01

SOUTHWESTERN BELL TELEPHONE COMPANY  
LOCAL EXCHANGE TARIFF

Missouri Public

1.2 RATES (cont'd)

1.2.1 Within the Base Rate Area, As shown on The Related Exchange Area Map: (cont'd)

REC'D OCT 15 2003

Class of Service

Current Monthly Rates (1) Service Commission

Urban Service (cont'd)

Residence

Flat Rate -

One-Party Line

\$12.40(CR)

Multiline

15.00

PBX Trunk

15.00

**CANCELLED**

JUN 09 2004  
1,144/251.01  
Public Service Commission  
MISSOURI

(1) See Sheet 2 for maximum allowable rates.

Issued: October 15, 2003

Effective: December 1, 2003

By CINDY BRINKLEY, President-SBC Missouri  
Southwestern Bell Telephone, L.P., d/b/a SBC Missouri  
St. Louis, Missouri

Missouri Public  
Service Commission

FILED DEC 01 2003

No Supplement to this tariff will be issued except for the purpose of canceling this tariff.

Missouri Portion-  
Blytheville, Arkansas, Exchange  
12th Revised Sheet 1.01  
Replacing 11th Revised Sheet 1.01

SOUTHWESTERN BELL TELEPHONE COMPANY  
LOCAL EXCHANGE TARIFF

Missouri Public  
Service Commission

1.2 RATES (cont'd)

REC'D OCT 15 2002

1.2.1 Within the Base Rate Area, As shown on The Related Exchange Area Map: (cont'd)

<u>Class of Service</u>	<u>Current Monthly Rates(1)</u>
Urban Service (cont'd)	
Residence	
Flat Rate -	
One-Party Line	\$12.41(CR)
Multiline	15.00
PBX Trunk	15.00

**CANCELLED**

DEC 01 2003  
by 134RS/1.01  
Public Service Commission  
MISSOURI

Missouri Public  
Service Commission

(1) See Sheet 2 for maximum allowable rates.

**FILED DEC 01 2002**

Issued: October 15, 2002

Effective: December 1, 2002

By CINDY BRINKLEY, President-Missouri  
Southwestern Bell Telephone, L.P., d/b/a Southwestern Bell Telephone Company  
St. Louis, Missouri

No supplement to this tariff will be issued except for the purpose of canceling this tariff.

MISSOURI PORTION- BLYTHEVILLE,  
ARKANSAS, EXCHANGE  
11th Revised Sheet 1.01  
Replacing 10th Revised Sheet 1.01

SOUTHWESTERN BELL TELEPHONE COMPANY  
LOCAL EXCHANGE TARIFF

Missouri Public

REC'D OCT 01 2001

1.2 RATES-(Continued)

1.2.1 Within the Base Rate Area, As shown on The Related Exchange Area Map-(Continued).

Service Commission

CLASS OF SERVICE

CURRENT MONTHLY RATES (1)

Urban Service-(Continued)

Residence

Flat Rate -

One-Party Line

\$12.30(CR)

Multiline

15.00

PBX Trunk

15.00

**CANCELLED**

DEC 01 2002

124RS 1.01  
Public Service Commission  
MISSOURI

(1) See Sheet 2 for maximum allowable rates.

Issued: October 1, 2001

Effective: December 1, 2001

By JAN NEWTON, President-Missouri  
Southwestern Bell Telephone Company  
St. Louis, Missouri

Missouri Public

FILED DEC 01 2001

Service Commission

No supplement to this tariff will be issued except for the purpose of canceling this tariff.

MISSOURI PORTION- BLYTHEVILLE, ARKANSAS, EXCHANGE  
10th Revised Sheet 1.01  
Replacing 9th Revised Sheet 1.01

SOUTHWESTERN BELL TELEPHONE COMPANY **Missouri Public Service Commission**  
LOCAL EXCHANGE TARIFF

1.2 RATES-(Continued)

REC'D OCT 02 2000

1.2.1 Within the Base Rate Area, As shown on The Related Exchange Area Map-(Continued):

(AT) CLASS OF SERVICE CURRENT MONTHLY RATES (1)

Urban Service-(Continued)

(RT)  
|  
(RT)

(DR)  
|  
(DR)

Residence	
Flat Rate -	
One-Party Line	\$12.39(CR)
Multiline	15.00
PBX Trunk	15.00

**CANCELLED**

DEC 01 2001  
By *11/4/RS* \$1.01  
Public Service Commission  
MISSOURI  
Missouri Public Service Commission

FILED DEC 01 2000

(RT)  
(RT)  
(CT)

(1) See Sheet 2 for maximum allowable rates.

Issued: October 2, 2000

Effective: December 1, 2000

By JAN NEWTON, President-Missouri  
Southwestern Bell Telephone Company  
St. Louis, Missouri



No supplement to this tariff will be issued except for the purpose of canceling this tariff.

**RECEIVED**  
MISSOURI PORTION-BLYTHEVILLE,  
ARKANSAS, EXCHANGE  
9th Revised Sheet 1.01  
Replacing 8th Revised Sheet 1.01

SOUTHWESTERN BELL TELEPHONE COMPANY  
LOCAL EXCHANGE TARIFF

**MISSOURI**  
**Public Service Commission**

1.2 RATES-(Continued)

1.2.1 Within The Base Rate Area, As Shown On The Related Exchange Area Map:-  
(Continued)

Class of Service	Monthly Rates
Urban Service-(Continued)	
Semi-Public Rate -	
One-Party Line (1) . . . . .	\$15.43
Extension Line (2), each	
Regular	
Rotary Dial . . . . .	1.90
TOUCH-TONE Dial . . . . .	3.45
With Coin-Collecting Device (2)	
Rotary Dial . . . . .	4.05
TOUCH-TONE Dial . . . . .	4.80
Residence	
Flat Rate -	
One-Party Line . . . . .	12.51
	(DR)
Multiline . . . . .	15.00
PBX Trunk . . . . .	15.00

(RT)

**CANCELLED**

DEC 01 2000  
By 10th RSI.01  
Public Service Commission  
MISSOURI

- (1) Local messages originating at semi-public and public telephone are charged at 10 cents each.
- (2) Obsolete-applicable to existing installations at existing locations for existing customers.

**FILED**

Issued: FEB 07 1997

Effective: ~~MAR 10 1997~~ MAR 17 1997

By KAREN JENNINGS, President-Missouri  
Southwestern Bell Telephone Company  
St. Louis, Missouri

**MO.PUBLICSERVICECOMM**

No supplement to this tariff will be issued except for the purpose of canceling this tariff.

MISSOURI PORTION-BLYTHEVILLE,  
ARKANSAS, EXCHANGE  
8th Revised Sheet 1.01  
Replacing 7th Revised Sheet 1.01

SOUTHWESTERN BELL TELEPHONE COMPANY  
LOCAL EXCHANGE TARIFF

1.2 RATES-(Continued)

1.2.1 Within The Base Rate Area, As Shown On The Related Exchange Area Map:-  
(Continued)

<u>Class of Service</u>	<u>Monthly Rates</u>
Urban Service-(Continued)	
Semi-Public Rate -	
One-Party Line(1) . . . . .	(CR) \$15.43
Extension Line(2), each	
Regular	
Rotary Dial . . . . .	(CR) 1.90
TOUCH-TONE Dial . . . . .	(CR) 3.45
With Coin-Collecting Device(2)	
Rotary Dial . . . . .	(CR) 4.05
TOUCH-TONE Dial . . . . .	(CR) 4.80
Residence	
Flat Rate -	
One-Party Line . . . . .	(CR) 12.51
Two-Party Line . . . . .	(CR) 10.00
Multiline. . . . .	(CR) 15.00
(DR) PBX Trunk. . . . .	15.00
(NR)	

CANCELLED

MAR 17 1987  
BY 9th P.S. # 1.01  
Public Service Commission  
MISSOURI

- (1) Local messages originating at semi-public and public telephones are charged at 10 cents each.
- (2) Obsolete-applicable to existing installations at existing locations for existing customers.

Issued: AUG 25 1988

Effective: ~~SEP 20 1988~~ FILED  
DEC 1 1988

By R. D. Barron, President-Missouri Division  
Southwestern Bell Telephone Company  
St. Louis, Missouri

DEC 1 1988

Public Service Commission

P.S.C. Mo. - No. 17  
LOCAL EXCHANGE - MISSOURI PORTION TARIFF

Southwestern Bell Telephone  
Company d/b/a AT&T Missouri

Section 2  
12th Revised Sheet 1.2  
Replacing 11th Revised Sheet 1.2

11th Revised Sheet 1.2 was previously 11th Revised Sheet 1.02 (AT)

**MISSOURI PORTION - BLYTHEVILLE, ARKANSAS EXCHANGE** (AT)

**2. RATES (cont'd)**

2.1 Within the Base Rate Area, As shown on The Related Exchange Area Map: (cont'd)

<u>Class of Service</u>	<u>Current Monthly Rates(4)(5)</u>	(AT)
Suburban Service (1)		
Flat Rate -		
Business – 4-Party (3)	\$19.68	
Residence – 4-Party (3)	10.94	(CR)
Rural Service (1)		
Flat Rate -		
Business – 4-Party (2)	22.35	
Residence – 4-Party (2)	13.64	(CR)

- (1) Applicable where service offered.
- (2) Rate applicable only in an area six to nine miles beyond the base rate area. Beyond nine miles, but not more than 12 miles beyond the base rate area, an additional 24 cent monthly charge applies. Beyond 12 miles from the base rate area, an additional 24 cent monthly charge applies.
- (3) Beyond three miles airline distance of the base rate area boundary, additional monthly charges apply per main suburban telephone—24 cents per one-half mile or fraction thereof airline distance.
- (4) For the period of November 26, 2008 through November 25, 2012, prices for residence basic local service in this exchange will be governed by Section 392.245.5(7) RSMo. (AT)
- (5) For the period of November 26, 2008 through November 25, 2012, prices for business basic local service in this exchange will be governed by Section 392.245.5(7) RSMo. (AT)

Issued: July 2, 2009

Effective: July 12, 2009

**CANCELLED**  
May 1, 2014  
Missouri Public  
Service Commission  
JI-2014-0379

By DAVID NICHOLS, President - Missouri  
St. Louis, Missouri

Filed  
Missouri Public  
Service Commission  
JI-2010-0004

No Supplement to this tariff will be issued except for the purpose of canceling this tariff.

Missouri Portion-  
Blytheville, Arkansas, Exchange  
11th Revised Sheet 1.02  
Replacing 10th Revised Sheet 1.02

(RT)

LOCAL EXCHANGE TARIFF

1.2. RATES (cont'd)

1.2.1 Within the Base Rate Area, As shown on The Related Exchange Area Map: (cont'd)

<u>Class of Service</u>	<u>Current Monthly Rates(4)</u>
Suburban Service (1)	
Flat Rate -	
Business – 4-Party (3)	\$19.68(CR)
Residence – 4-Party (3)	8.94(CR)
Rural Service (1)	
Flat Rate -	
Business – 4-Party (2)	22.35(CR)
Residence – 4-Party (2)	11.64(CR)

- (1) Applicable where service offered.
- (2) Rate applicable only in an area six to nine miles beyond the base rate area. Beyond nine miles, but not more than 12 miles beyond the base rate area, an additional 24 cent monthly charge applies. Beyond 12 miles from the base rate area, an additional 24 cent monthly charge applies.
- (3) Beyond three miles airline distance of the base rate area boundary, additional monthly charges apply per main suburban telephone—24 cents per one-half mile or fraction thereof airline distance.
- (4) See Sheet 2 for maximum allowable rates.

Issued: October 17, 2005

Effective: December 1, 2005

By CINDY BRINKLEY, President-SBC Missouri  
Southwestern Bell Telephone, L.P., d/b/a SBC Missouri  
St. Louis, Missouri

No Supplement to this tariff will be issued except for the purpose of canceling this tariff.

Missouri Portion-  
Blytheville, Arkansas, Exchange  
10th Revised Sheet 1.02  
Replacing 9th Revised Sheet 1.02

SOUTHWESTERN BELL TELEPHONE COMPANY  
LOCAL EXCHANGE TARIFF

1.2. RATES (cont'd)

1.2.1 Within the Base Rate Area, As shown on The Related Exchange Area Map: (cont'd)

<u>Class of Service</u>	<u>Current Monthly Rates(4)</u>
Suburban Service (1)	
Flat Rate -	
Business - 4-Party (3)	\$20.08(CR)
Residence - 4-Party (3)	9.12(CR)
Rural Service (1)	
Flat Rate -	
Business - 4-Party (2)	22.79(CR)
Residence - 4-Party (2)	11.87(CR)

**CANCELLED**

DEC 01 2005

By 114<sup>th</sup> RS 1.02  
Public Service Commission  
MISSOURI

- (1) Applicable where service offered.
- (2) Rate applicable only in an area six to nine miles beyond the base rate area. Beyond nine miles, but not more than 12 miles beyond the base rate area, an additional 24 (CR) cent monthly charge applies. Beyond 12 miles from the base rate area, an additional 24 (CR) cent monthly charge applies.
- (3) Beyond three miles airline distance of the base rate area boundary, additional monthly charges apply per main suburban telephone—24(CR) cents per one-half mile or fraction thereof airline distance.
- (4) See Sheet 2 for maximum allowable rates.

Issued: October 15, 2004

Effective: December 1, 2004

By CINDY BRINKLEY, President-SBC Missouri  
Southwestern Bell Telephone, L.P., d/b/a SBC Missouri  
St. Louis, Missouri

**FILED  
MO PSC**

No Supplement to this tariff will be issued except for the purpose of canceling this tariff.

Missouri Portion-  
Blytheville, Arkansas, Exchange  
9th Revised Sheet 1.02  
Replacing 8th Revised Sheet 1.02

Missouri Public

SOUTHWESTERN BELL TELEPHONE COMPANY  
LOCAL EXCHANGE TARIFF

REC'D OCT 15 2003

1.2. RATES (cont'd)

1.2.1 Within the Base Rate Area, As shown on The Related Exchange Area Map: (cont'd) Services Commission

<u>Class of Service</u>	<u>Current Monthly Rates(4)</u>
<b>Suburban Service (1)</b>	
Flat Rate -	
Business - 4-Party (3)	\$20.63(CR)
Residence - 4-Party (3)	9.37
<b>Rural Service (1)</b>	
Flat Rate -	
Business - 4-Party (2)	23.42(CR)
Residence - 4-Party (2)	12.20(CR)

CANCELLED

DEC 01 2004  
By LAUREN S. 1.02  
Public Service Commission  
MISSOURI

- (1) Applicable where service offered.
- (2) Rate applicable only in an area six to nine miles beyond the base rate area. Beyond nine miles, but not more than 12 miles beyond the base rate area, an additional 25 cent monthly charge applies. Beyond 12 miles from the base rate area, an additional 25 cent monthly charge applies.
- (3) Beyond three miles airline distance of the base rate area boundary, additional monthly charges apply per main suburban telephone—25 cents per one-half mile or fraction thereof airline distance.
- (4) See Sheet 2 for maximum allowable rates.

Issued: October 15, 2003

Effective: December 1, 2003

By CINDY BRINKLEY, President-SBC Missouri  
Southwestern Bell Telephone, L.P., d/b/a SBC Missouri  
St. Louis, Missouri

Missouri Public  
Service Commission

FILED DEC 01 2003

No Supplement to this tariff will be issued except for the purpose of canceling this tariff.

Missouri Portion-  
Blytheville, Arkansas, Exchange  
8th Revised Sheet 1.02  
Replacing 7th Revised Sheet 1.02

SOUTHWESTERN BELL TELEPHONE COMPANY **Missouri Public Service Commission**  
LOCAL EXCHANGE TARIFF

1.2. RATES (cont'd)

**REC'D OCT 15 2002**

1.2.1 Within the Base Rate Area, As shown on The Related Exchange Area Map: (cont'd)

(AT)	<u>Class of Service</u>	<u>Current Monthly Rates(4)</u>
	Suburban Service (1)	
	Flat Rate -	
	Business - 4-Party (3)	\$20.64(CR)
	Residence - 4-Party (3)	9.37(CR)
	Rural Service (1)	
	Flat Rate -	
	Business - 4-Party (2)	23.43(CR)
	Residence - 4-Party (2)	12.21(CR)

**CANCELLED**

DEC 01 2003  
9th BS1.02  
Public Service Commission  
PROC 2003

**Missouri Public Service Commission**

**FILED DEC 01 2002**

- (1) Applicable where service offered.
- (2) Rate applicable only in an area six to nine miles beyond the base rate area. Beyond nine miles, but not more than 12 miles beyond the base rate area, an additional 25 cent monthly charge applies. Beyond 12 miles from the base rate area, an additional 25 cent monthly charge applies.
- (3) Beyond three miles airline distance of the base rate area boundary, additional monthly charges apply per main suburban telephone—25 cents per one-half mile or fraction thereof airline distance.
- (4) See Sheet 2 for maximum allowable rates.

Issued: October 15, 2002

Effective: December 1, 2002

By CINDY BRINKLEY, President-Missouri  
Southwestern Bell Telephone, L.P., d/b/a Southwestern Bell Telephone Company  
St. Louis, Missouri

No supplement to this tariff will be issued except for the purpose of canceling this tariff.

MISSOURI PORTION- BLYTHEVILLE,  
ARKANSAS, EXCHANGE  
7th Revised Sheet 1.02  
Replacing 6th Revised Sheet 1.02

SOUTHWESTERN BELL TELEPHONE COMPANY  
LOCAL EXCHANGE TARIFF

Missouri Public

REC'D OCT 01 2001

1.2 RATES-(Continued)

Service Commission

1.2.2 Outside The Base Rate Area, But Within The Exchange Area:

Current Monthly Rates (4)

Suburban Service (1)

Flat Rate -

Business - 4-Party (3)  
Residence - 4-Party (3)

\$20.46(CR)  
9.29(CR)

Rural Service (1)

Flat Rate -

Business - 4-Party (2)  
Residence - 4-Party (2)

23.22(CR)  
12.10(CR)

CANCELLED

DEC 01 2002  
844 RSI.02  
Missouri Service Commission  
MISSOURI

- (1) Applicable where service offered.
- (2) Rate applicable only in an area six to nine miles beyond the base rate area. Beyond nine miles, but not more than 12 miles beyond the base rate area, an additional 25 cent monthly charge applies. Beyond 12 miles from the base rate area, an additional 25 cent monthly charge applies.
- (3) Beyond three miles airline distance of the base rate area boundary, additional monthly charges apply per main suburban telephone—25 cents per one-half mile or fraction thereof airline distance.
- (4) See Sheet 2 for maximum allowable rates.

Issued: October 1, 2001

Effective: December 1, 2001

By JAN NEWTON, President-Missouri  
Southwestern Bell Telephone Company  
St. Louis, Missouri

Missouri Public

FILED DEC 01 2001

Service Commission



No supplement to this tariff will be issued except for the purpose of canceling this tariff.

MISSOURI PORTION- BLYTHEVILLE, ARKANSAS, EXCHANGE  
6th Revised Sheet 1.02  
Replacing 5th Revised Sheet 1.02

SOUTHWESTERN BELL TELEPHONE COMPANY LOCAL EXCHANGE TARIFF  
Missouri Public Service Commission

REC'D OCT 02 2000

1.2 RATES-(Continued)

1.2.2 Outside The Base Rate Area, But Within The Exchange Area:

(AT)

Current Monthly Rates (4)

Suburban Service (1)

Flat Rate -

Business - 4-Party (3)	\$20.61(CR)
Residence - 4-Party (3)	9.36(CR)

Rural Service (1)

Flat Rate -

Business - 4-Party (2)	23.40(CR)
Residence - 4-Party (2)	12.19(CR)

CANCELLED

DEC 01 2001  
By THRS 1.02  
Public Service Commission  
MISSOURI

- (1) Applicable where service offered.
- (2) Rate applicable only in an area six to nine miles beyond the base rate area. Beyond nine miles, but not more than 12 miles beyond the base rate area, an additional 25 cent monthly charge applies. Beyond 12 miles from the base rate area, an additional 25 cent monthly charge applies.
- (3) Beyond three miles airline distance of the base rate area boundary, additional monthly charges apply per main suburban telephone—25 cents per one-half mile or fraction thereof airline distance.
- (4) See Sheet 2 for maximum allowable rates.

(AT)

Issued: October 2, 2000

Effective: December 1, 2000

By JAN NEWTON, President-Missouri  
Southwestern Bell Telephone Company  
St. Louis, Missouri

Missouri Public Service Commission

FILED DEC 01 2000

No supplement to this tariff will be issued except for the purpose of canceling this tariff.

MISSOURI PORTION-BLYTHEVILLE, ARKANSAS, EXCHANGE  
5th Revised Sheet 1.02  
Replacing 4th Revised Sheet 1.02

SOUTHWESTERN BELL TELEPHONE COMPANY  
LOCAL EXCHANGE TARIFF

1.2 RATES--(Continued)

1.2.2 Outside The Base Rate Area, But Within The Exchange Area:

<u>Class of Service</u>	<u>Monthly Rates</u>
<b>Suburban Service(1)</b>	
Flat Rate -	
Business - 4-Party(3) . . . . .	(CR) \$20.80
Residence - 4-Party(3). . . . .	(CR) 9.45
<b>Rural Service(1)</b>	
Flat Rate -	
Business - 4-Party(2) . . . . .	(CR) 23.62
Residence - 4-Party(2). . . . .	(CR) 12.30

CANCELLED

DEC 01 2000

By 6<sup>th</sup> RSI.02  
Public Service Commission  
MISSOURI

(RT)

- (FC) (1) Applicable where service is offered.
- (FC) (2) Rate applicable only in an area six to nine miles beyond the base rate area. Beyond nine miles, but not more than 12 miles beyond the base rate area, an additional 25-cent monthly charge applies. Beyond 12 miles from the base rate area, an additional 25-cent monthly charge applies.
- (FC) (3) Beyond three miles airline distance of the base rate area boundary, additional monthly charges apply per main suburban telephone--25 cents per one-half mile or fraction thereof airline distance.

Issued: AUG 25 1988

Effective: ~~SEP 29 1988~~  
DEC 1 1988

FILED

DEC 1 1988

By R. D. BARRON, President-Missouri Division  
Southwestern Bell Telephone Company  
St. Louis, Missouri

Public Service Commission

P.S.C. Mo. - No. 17  
LOCAL EXCHANGE - MISSOURI PORTION TARIFF

Southwestern Bell Telephone  
Company d/b/a AT&T Missouri

Section 2  
9th Revised Sheet 2  
Replacing 8th Revised Sheet 2

---

(RT)

(RT)

---

Issued: July 2, 2009

By DAVID NICHOLS, President - Missouri  
St. Louis, Missouri

Effective: July 12, 2009

CANCELLED  
May 1, 2014  
Missouri Public  
Service Commission  
JI-2014-0379

Filed  
Missouri Public  
Service Commission  
JI-2010-0004

**P.S.C. Mo. - No. 17**

**Missouri Portion-**

Southwestern Bell Telephone  
Company d/b/a AT&T Missouri

Blytheville, Arkansas Exchange  
8th Revised Sheet 2  
Replacing 7th Revised Sheet 2

**LOCAL EXCHANGE TARIFF**

---

**1.2. RATES (cont'd)**

1.2.1 Within the Base Rate Area, As shown on The Related Exchange Area Map: (cont'd)

<u>Class of Service</u>	<u>Maximum Rates</u>
Urban Service	
Business	
Flat Rate -	
One-Party Line	\$25.26(CR)
Residence	
Flat Rate -	
One-Party Line	12.10(CR)
Lifeline(1)	8.57
Suburban Service	
Flat Rate -	
Business – 4-Party	20.12(CR)
Residence – 4-Party	9.14(CR)
Rural Service	
Flat Rate -	
Business – 4-Party	22.85(CR)
Residence – 4-Party	11.90(CR)

(1) See P.S.C. Mo. – No. 24, Local Exchange Tariff, Section 1.2.2.E, for description, terms and conditions related to Lifeline Service.

---

Issued: December 31, 2007

Effective: February 16, 2008

By CINDY BRINKLEY, President – Missouri  
St. Louis, Missouri

Cancelled  
July 12, 2009  
Missouri Public  
Service Commission  
JI-2010-0004

FILED  
Missouri Public  
Service Commission

**LOCAL EXCHANGE TARIFF**

---

**1.2. RATES (cont'd)**

1.2.1 Within the Base Rate Area, As shown on The Related Exchange Area Map: (cont'd)

<u>Class of Service</u>	<u>Maximum Rates</u>
Urban Service	
Business	
Flat Rate -	
One-Party Line	\$24.77(CR)
Residence	
Flat Rate -	
One-Party Line	11.86(CR)
Lifeline(1)	8.57
Suburban Service	
Flat Rate -	
Business – 4-Party	19.72(CR)
Residence – 4-Party	8.96(CR)
Rural Service	
Flat Rate -	
Business – 4-Party	22.40(CR)
Residence – 4-Party	11.67(CR)

(1) See P.S.C. Mo. – No. 24, Local Exchange Tariff, Section 1.2.2.E, for description, terms and conditions related to Lifeline Service.

---

Issued: October 17, 2006

Effective: December 1, 2006

By CINDY BRINKLEY, President – Missouri  
St. Louis, Missouri

CANCELLED  
February 16, 2008  
Missouri Public  
Service Commission

**Filed**  
Missouri Public  
Service Commission

No Supplement to this tariff will be issued except for the purpose of canceling this tariff.

Missouri Portion-  
Blytheville, Arkansas, Exchange  
6th Revised Sheet 2  
Replacing 5th Revised Sheet 2

(RT)

LOCAL EXCHANGE TARIFF

1.2. RATES (cont'd)

1.2.1 Within the Base Rate Area, As shown on The Related Exchange Area Map: (cont'd)

<u>Class of Service</u>	<u>Maximum Rates</u>
Urban Service	
Business	
Flat Rate -	
One-Party Line	\$24.71(CR)
Residence	
Flat Rate -	
One-Party Line	11.83(CR)
Lifeline(1)	8.57
Suburban Service	
Flat Rate -	
Business – 4-Party	19.68(CR)
Residence – 4-Party	8.94(CR)
Rural Service	
Flat Rate -	
Business – 4-Party	22.35(CR)
Residence – 4-Party	11.64(CR)

(1) See P.S.C. Mo. – No. 24, Local Exchange Tariff, Section 1.2.2.E, for description, terms and conditions related to Lifeline Service.

Issued: October 17, 2005

Effective: December 1, 2005

By CINDY BRINKLEY, President-SBC Missouri  
Southwestern Bell Telephone, L.P., d/b/a SBC Missouri  
St. Louis, Missouri

**Cancelled**

December 1, 2006

Missouri Public  
Service Commission

**Filed**

Missouri Public  
Service Commission

No Supplement to this tariff will be issued except for the purpose of canceling this tariff.

Missouri Portion-  
Blytheville, Arkansas, Exchange  
5th Revised Sheet 2  
Replacing 4th Revised Sheet 2

SOUTHWESTERN BELL TELEPHONE COMPANY  
LOCAL EXCHANGE TARIFF

1.2. RATES (cont'd)

1.2.1 Within the Base Rate Area, As shown on The Related Exchange Area Map: (cont'd)

<u>Class of Service</u>	<u>Maximum Rates</u>
Urban Service	
Business	
Flat Rate -	
One-Party Line	\$25.21(CR)
Residence	
Flat Rate -	
One-Party Line	12.07
Lifeline(1)	8.57
Suburban Service	
Flat Rate -	
Business - 4-Party	20.08
Residence - 4-Party	9.12
Rural Service	
Flat Rate -	
Business - 4-Party	22.79
Residence - 4-Party	11.87(CR)

**CANCELLED**

DEC 01 2005  
By *67 RS 2*  
Public Service Commission  
MISSOURI

(1) See P.S.C. Mo. - No. 24, Local Exchange Tariff, Section 1.2.2.E, for description, terms and conditions related to Lifeline Service.

Issued: October 15, 2004

Effective: December 1, 2004

By CINDY BRINKLEY, President-SBC Missouri  
Southwestern Bell Telephone, L.P., d/b/a SBC Missouri  
St. Louis, Missouri

**FILED  
MO PSC**

No Supplement to this tariff will be issued except for the purpose of canceling this tariff.

Missouri Portion-  
Blytheville, Arkansas, Exchange  
4th Revised Sheet 2  
Replacing 3rd Revised Sheet 2  
Missouri Public

SOUTHWESTERN BELL TELEPHONE COMPANY Service Commission  
LOCAL EXCHANGE TARIFF

REC'D MAY 10 2004

1.2. RATES (cont'd)

1.2.1 Within the Base Rate Area, As shown on The Related Exchange Area Map: (cont'd)

(CT)	<u>Class of Service</u>	<u>Maximum Rates</u>
	Urban Service	
	Business	
	Flat Rate -	
	One-Party Line	\$25.90
	Residence	
	Flat Rate -	
	One-Party Line	12.40
(AT)	Lifeline(1)	8.90(NR)
	Suburban Service	
	Flat Rate -	
	Business - 4-Party	20.63
	Residence - 4-Party	9.37
	Rural Service	
	Flat Rate -	
	Business - 4-Party	23.42
	Residence - 4-Party	12.20

**CANCELLED**

DEC 01 2004  
By *SMRS2*  
Public Service Commission  
MISSOURI

(RT)  
(FC)(AT) (1) See P.S.C. Mo. - No. 24, Local Exchange Tariff, Section 1.2.2.E, for description, terms and conditions related to Lifeline Service.

Issued: May 10, 2004

Effective: June 9, 2004

By CINDY BRINKLEY, President-SBC Missouri  
Southwestern Bell Telephone, L.P., d/b/a SBC Missouri  
St. Louis, Missouri

Missouri Public  
Service Commission

FILED JUN 09 2004



No Supplement to this tariff will be issued except for the purpose of canceling this tariff.

Missouri Portion-  
Blytheville, Arkansas, Exchange  
3rd Revised Sheet 2  
Replacing 2nd Revised Sheet 2  
MISSOURI Public

SOUTHWESTERN BELL TELEPHONE COMPANY  
LOCAL EXCHANGE TARIFF

REC'D OCT 15 2003

1.2. RATES (cont'd)

1.2.1 Within the Base Rate Area, As shown on The Related Exchange Area Map: (cont'd)

Service Commission

<u>Class of Service</u>	<u>Current Monthly Rates(1)</u>
Urban Service	
Business	
Flat Rate -	
One-Party Line	\$25.90(CR)
Residence	
Flat Rate -	
One-Party Line	12.40(CR)
Suburban Service	
Flat Rate -	
Business - 4-Party	20.63(CR)
Residence - 4-Party	9.37
Rural Service	
Flat Rate -	
Business - 4-Party	23.42(CR)
Residence - 4-Party	12.20(CR)

**CANCELLED**

JUN 09 2004  
by YMB  
Public Service Commission  
MISSOURI

(AT) (1) See Sheet 2 for maximum allowable rates.

Issued: October 15, 2003

Effective: December 1, 2003

By CINDY BRINKLEY, President-SBC Missouri  
Southwestern Bell Telephone, L.P., d/b/a SBC Missouri  
St. Louis, Missouri

Missouri Public  
Service Commission

FILED DEC 01 2003

No Supplement to this tariff will be issued except for the purpose of canceling this tariff.

Missouri Portion-  
Blytheville, Arkansas, Exchange  
2nd Revised Sheet 2  
Replacing 1st Revised Sheet 2

SOUTHWESTERN BELL TELEPHONE COMPANY  
LOCAL EXCHANGE TARIFF

Missouri Public  
Service Commission

1.2 RATES (cont'd)

REC'D OCT 15 2002

1.2.1 Within the Base Rate Area, As shown on The Related Exchange Area Map: (cont'd)

<u>Class of Service</u>	<u>Current Monthly Rates(1)</u>
Urban Service	
Business	
Flat Rate -	
One-Party Line	\$25.91(CR)
Residence	
Flat Rate -	
One-Party Line	12.41(CR)
Suburban Service	
Flat Rate -	
Business - 4-Party	20.64(CR)
Residence - 4-Party	9.37(CR)
Rural Service	
Flat Rate -	
Business - 4-Party	23.43(CR)
Residence - 4-Party	12.21(CR)

**CANCELLED**

DEC 01 2003  
3rd RS 2  
Missouri Public Service Commission  
MISSOURI

Missouri Public  
Service Commission

FILED DEC 01 2002

Issued: October 15, 2002

Effective: December 1, 2002

By CINDY BRINKLEY, President-Missouri  
Southwestern Bell Telephone, L.P., d/b/a Southwestern Bell Telephone Company  
St. Louis, Missouri

No supplement to this tariff will be issued except for the purpose of canceling this tariff.

MISSOURI PORTION- BLYTHEVILLE,  
ARKANSAS, EXCHANGE  
1st Revised Sheet 2  
Replacing Original Sheet 2

Missouri Public

SOUTHWESTERN BELL TELEPHONE COMPANY  
LOCAL EXCHANGE TARIFF

REC'D OCT 01 2001

1.2 RATES-(Continued)

Service Commission

<u>Class of Service</u>	<u>Maximum Monthly Rates</u>
Urban Service Business Flat Rate - One-Party Line	\$25.68 (CR)
Residence Flat Rate - One-Party Line	12.30 (CR)
Suburban Service Flat Rate - Business - 4-Party Residence - 4-Party	20.46 (CR) 9.29 (CR)
Rural Service Flat Rate - Business - 4-Party Residence - 4-Party	23.22 (CR) 12.10 (CR)

(RT)

**CANCELLED**

DEC 01 2002

2nd RSZ  
Missouri Service Commission  
MISSOURI

Issued: October 1, 2001

Effective: December 1, 2001

By JAN NEWTON, President-Missouri  
Southwestern Bell Telephone Company  
St. Louis, Missouri

Missouri Public

FILED DEC 01 2001

Service Commission

No supplement to this tariff will be issued except for the purpose of canceling this tariff.

MISSOURI PORTION- BLYTHEVILLE, ARKANSAS, EXCHANGE  
Original Sheet 2

SOUTHWESTERN BELL TELEPHONE COMPANY  
LOCAL EXCHANGE TARIFF

Missouri Public Service Commission

REC'D OCT 02 2000

1.2 RATES-(Continued)

<u>Class of Service</u>	<u>Maximum Monthly Rates</u>
Urban Service	
Business	
Flat Rate -	
One-Party Line	\$25.87
Residence	
Flat Rate -	
One-Party Line	12.39
Two-Party Line	9.91
Suburban Service	
Flat Rate -	
Business - 4-Party	20.61
Residence - 4-Party	9.36
Rural Service	
Flat Rate -	
Business - 4-Party	23.40
Residence - 4-Party	12.19

**CANCELLED**

DEC 01 2000

19252  
Public Service Commission  
MISSOURI

Missouri Public Service Commission

FILED DEC 01 2000

Issued: October 2, 2000

Effective: December 1, 2000

By JAN NEWTON, President-Missouri  
Southwestern Bell Telephone Company  
St. Louis, Missouri

NO SUPPLEMENT TO THIS TARIFF WILL BE ISSUED EXCEPT FOR THE PURPOSE OF CANCELING THIS TARIFF.

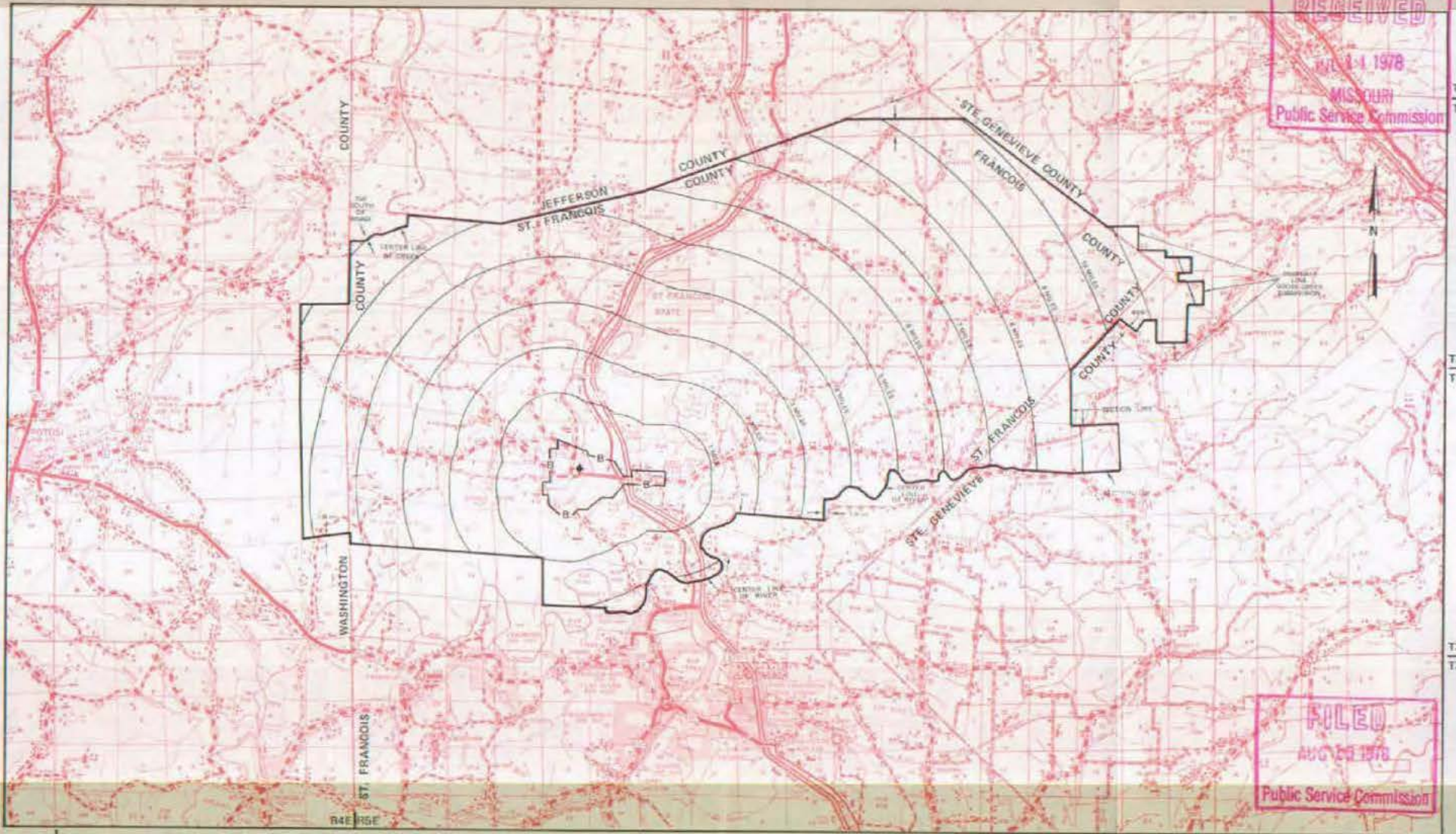
CANCELLED  
April 13, 2012  
Missouri Public  
Service Commission  
JI-2012-0438

P. S. C. Mo. No. 17  
EXCHANGE AREA MAP

Bonne Terre, Missouri

8th REVISED SHEET 3  
REPLACING 7th REVISED SHEET 3

RECEIVED  
JUL 14 1978  
MISSOURI  
Public Service Commission



T39N  
T38N

T38N  
T37N

T37N  
T36N

FILED  
AUG 15 1978  
Public Service Commission

R3E | R4E | R5E | R6E | R7E | R8E

By R. R. SHOCKLEY, Vice President, Missouri  
Southwestern Bell Telephone  
St. Louis, Missouri

Issued: JULY 14, 1978

Effective: AUGUST 15, 1978