

NO SUPPLEMENT TO THIS TARIFF WILL BE ISSUED EXCEPT FOR THE PURPOSE OF CANCELING THIS TARIFF.

Camdenton, Missouri
1st REVISED SHEET 2
REPLACING ORIGINAL SHEET 2

P. S. C. Mo. No. 1
(Canceling all Previous Schedules)

INITIAL RATE AREA MAP

LINNCREEK, MO

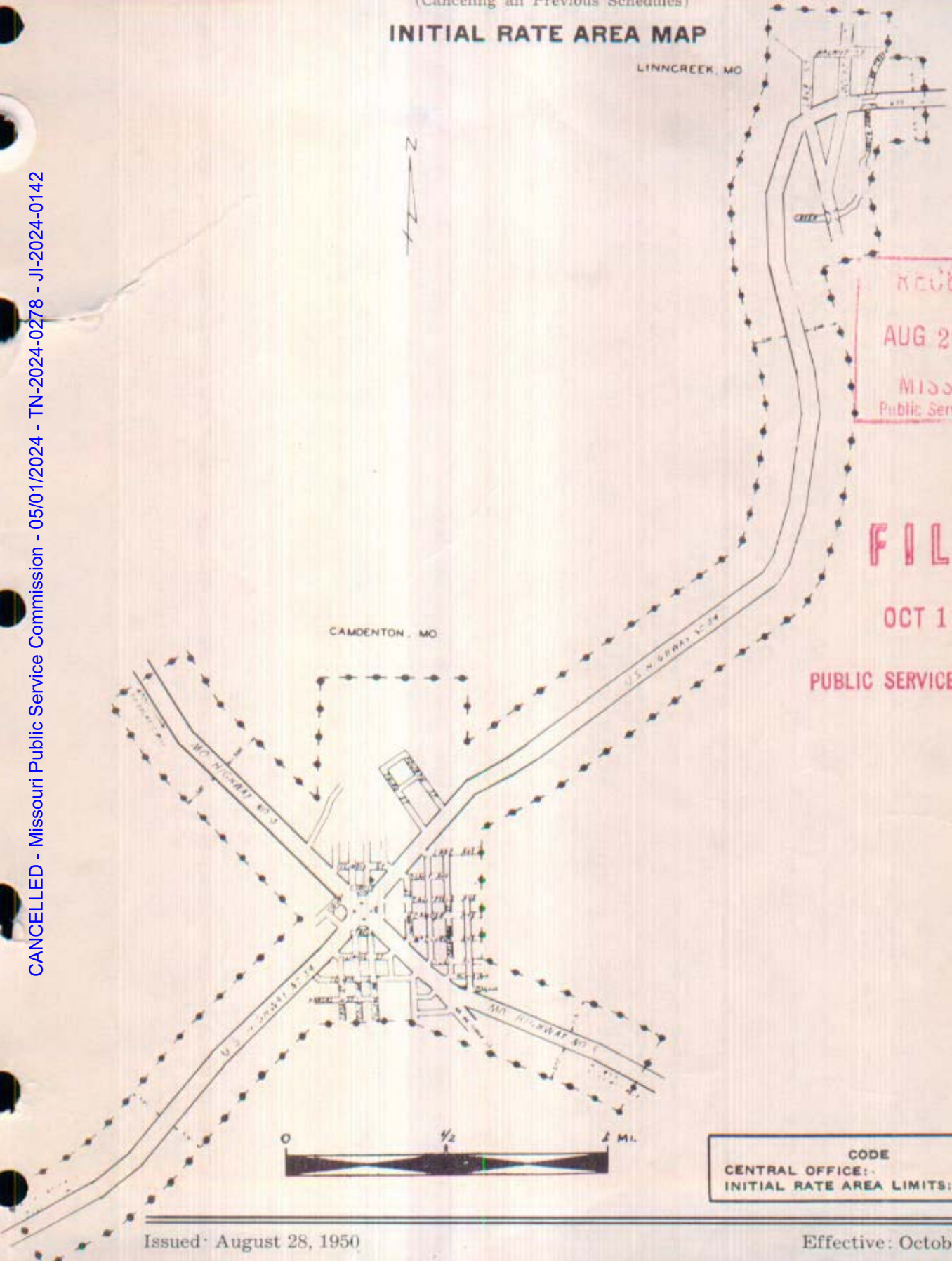


RECEIVED
AUG 29 1950
MISSOURI
Public Service Comm.

FILED
OCT 1 1950

PUBLIC SERVICE COMMISSION

CAMDENTON, MO



CODE
CENTRAL OFFICE: [Symbol]
INITIAL RATE AREA LIMITS: [Symbol]

Issued: August 28, 1950

Effective: October 1, 1950

By T. L. LEONARD, President
Ozark Central Telephone Company
St. Louis, Missouri

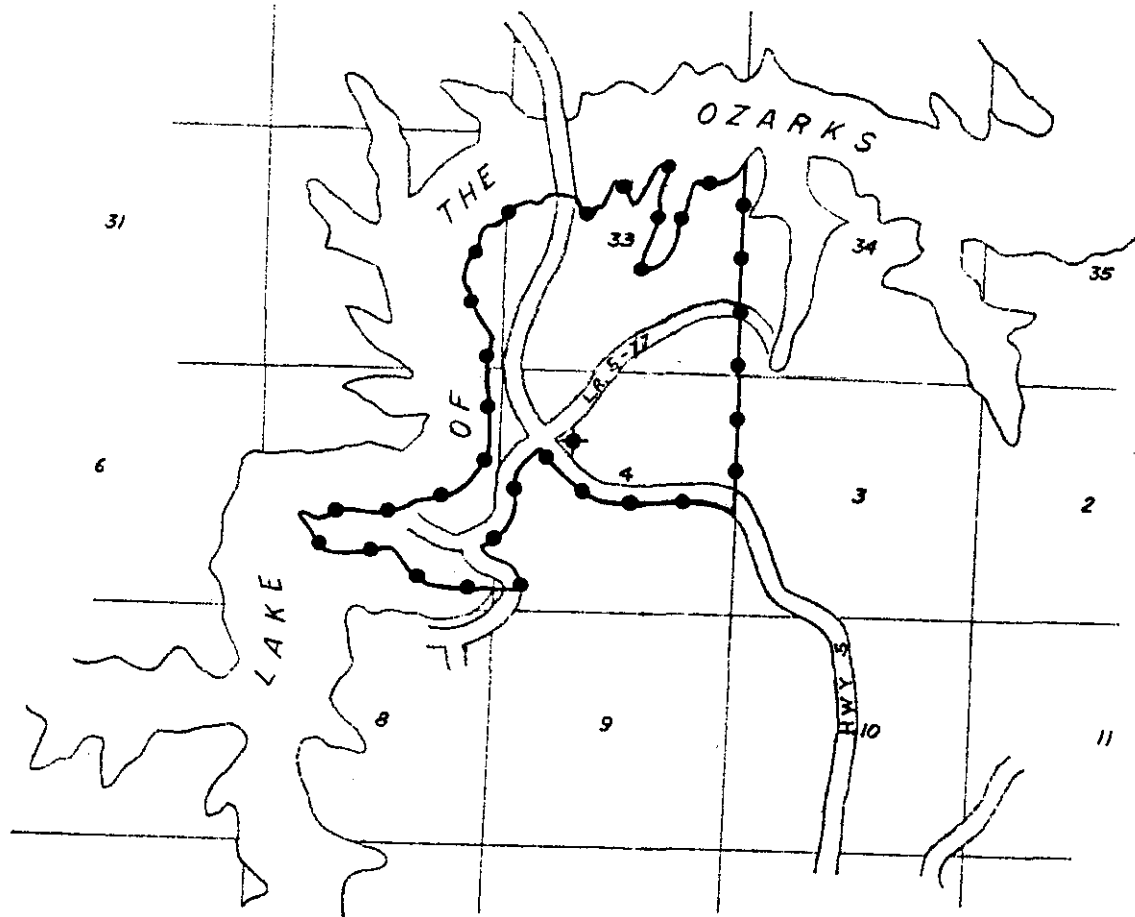
CANCELLED - Missouri Public Service Commission - 05/01/2024 - TN-2024-0278 - JI-2024-0142

P. S. C. Mo. No. 17
Camdenton North
ISLAND BASE RATE AREA

RECEIVED
APR 27 1972
MISSOURI
Public Service Commission

CAMDENTON NORTH ISLAND BASE RATE AREA

CANCELLED - Missouri Public Service Commission - 05/01/2024 - TN-2024-0278 - JI-2024-0142



FILED
JUN 4 1972
Public Service Commission



CODE

BELL CENTRAL OFFICE: ◆

BASE RATE AREA LIMITS: ●●●●●

NO SUPPLEMENT TO THIS TARIFF WILL BE ISSUED EXCEPT FOR THE PURPOSE OF CANCELING THIS TARIFF.

P. S. C. Mo. No. 17
EXCHANGE AREA MAP

Missouri Public Service Commission

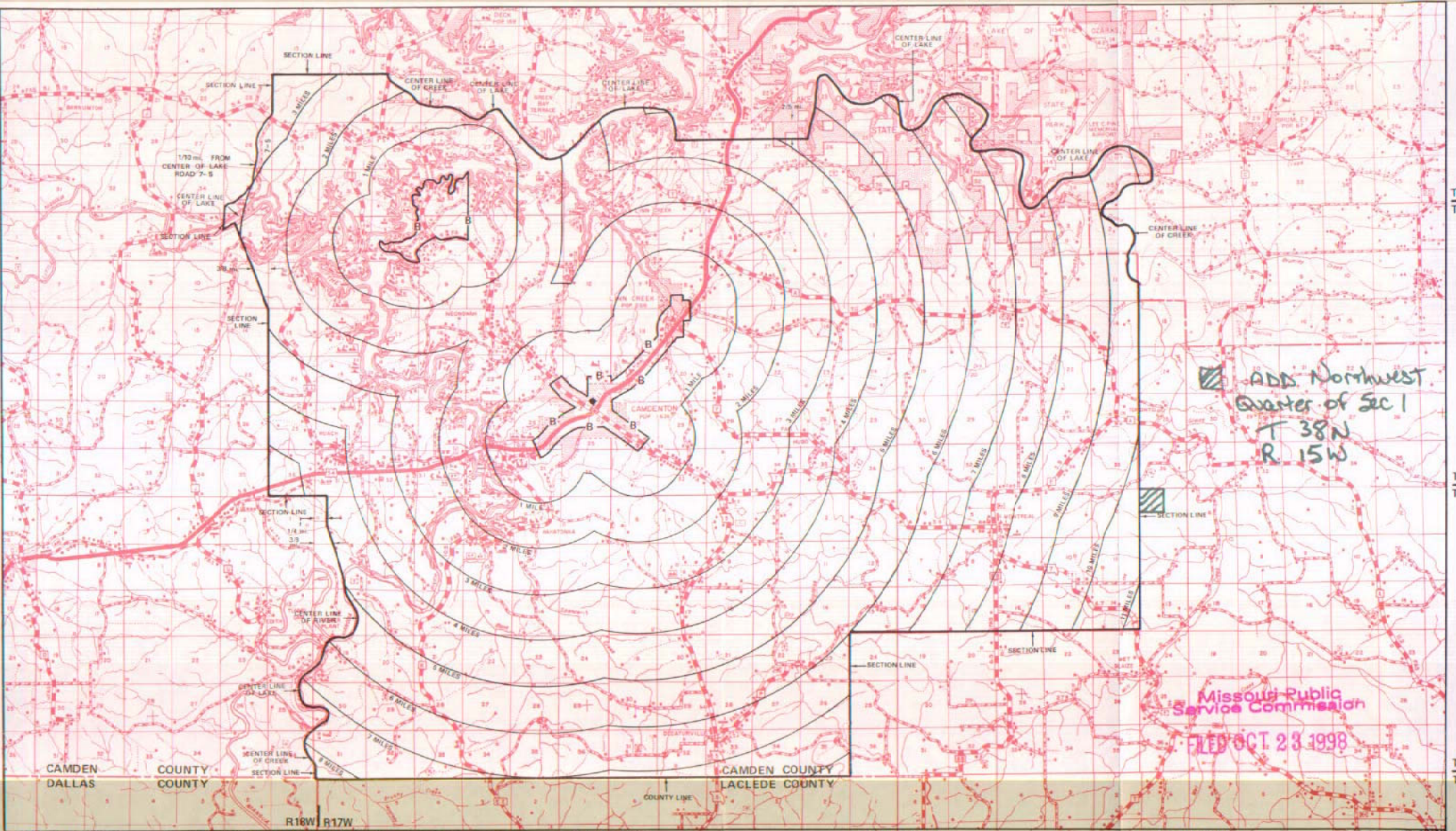
Camdenton, Missouri

REC'D SEP 21 1998

REPLACING 13th REVISED SHEET 3
12th REVISED SHEET 3

13
12

CANCELLED - Missouri Public Service Commission - 05/01/2024 - TN-2024-0278 - JI-2024-0142



ADD Northwest
Quarter of Sec 1
T 38N
R 15W

Missouri Public Service Commission

FILED OCT 23 1998

R19W | R18W | SEP 21 1998

By R. R. SHOCKLEY, Vice President, Missouri Southwestern Bell Telephone Company

Priscilla Hill-Ardoin, St. Louis, Missouri

R17W | R16W

R16W | R15W

R15W | R14W

OCT 23 1998

Issued: MARCH 18 1980

St. Louis, Missouri

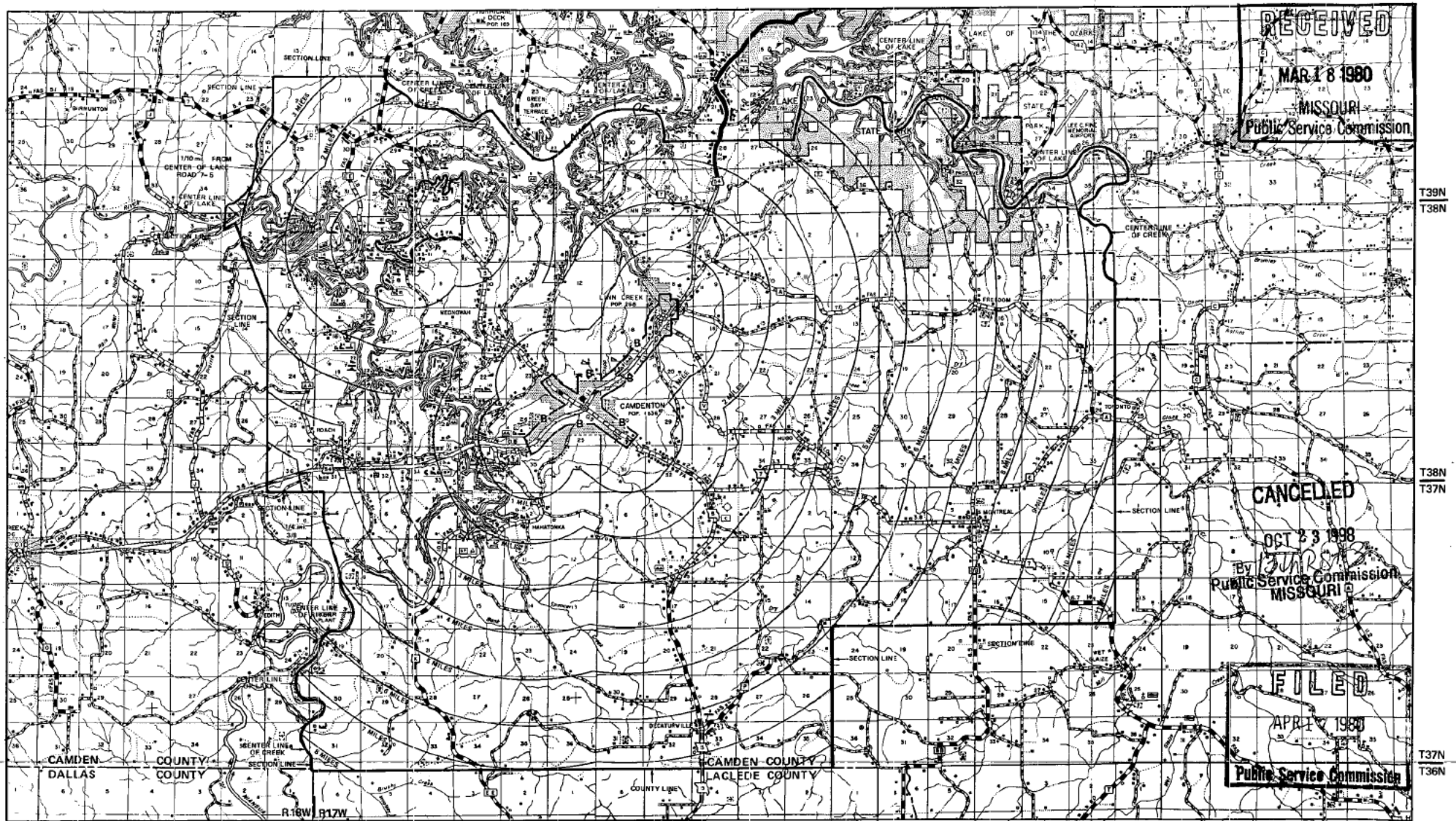
Effective: APRIL 17 1980

NO SUPPLEMENT TO THIS TARIFF WILL BE ISSUED EXCEPT FOR THE PURPOSE OF CANCELING THIS TARIFF.

P. S. C. Mo. No. 17
EXCHANGE AREA MAP

Camdenton, Missouri

12th REVISED SHEET 3
REPLACING 11th REVISED SHEET 3



R19W R18W

By R. R. SHOCKLEY, Vice President, Missouri
Southwestern Bell Telephone Company
St. Louis, Missouri

R17W R16W

R16W R15W

R15W R14W

Issued: MARCH 18, 1980

Effective: APRIL 17, 1980

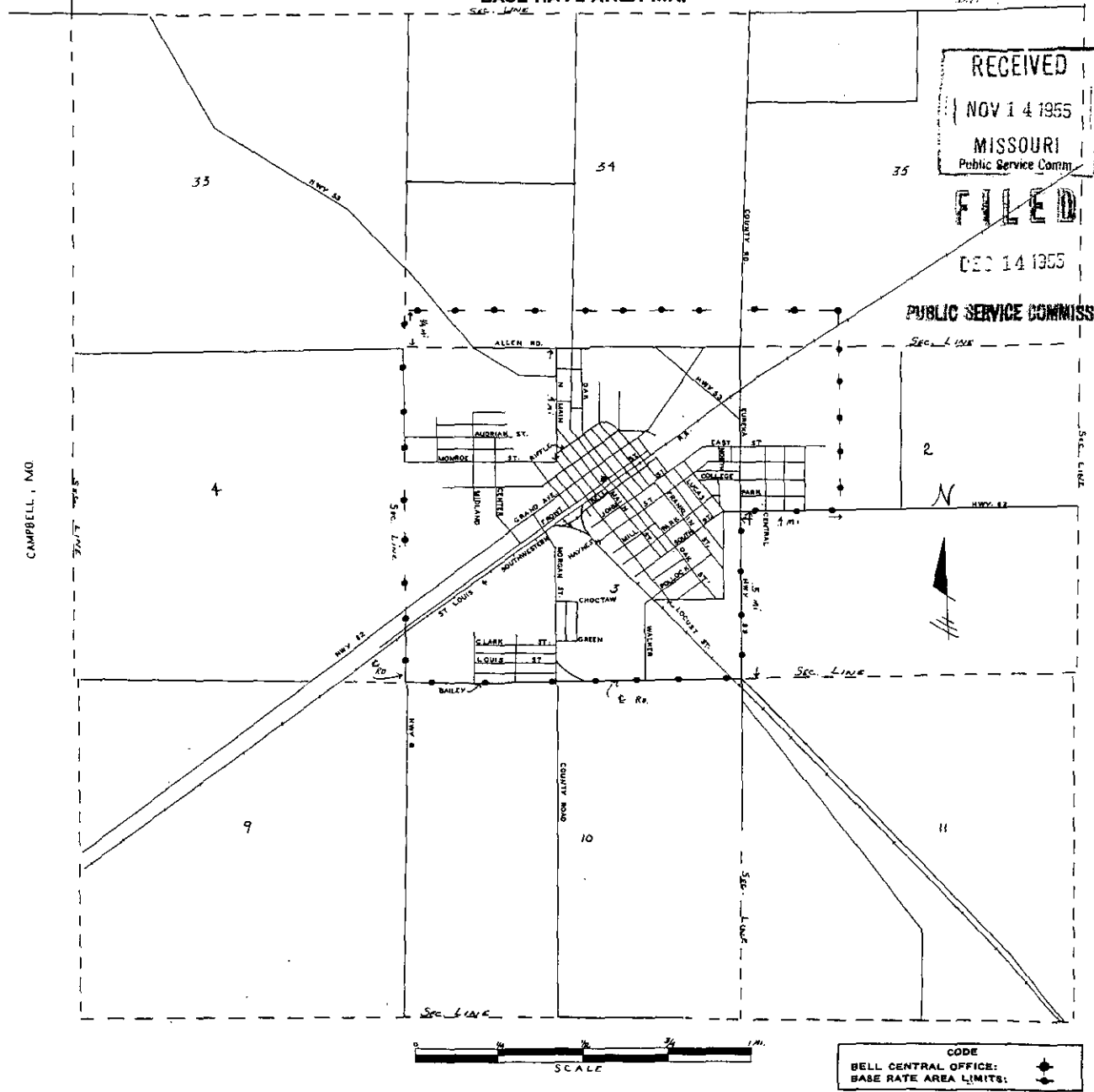
AS SUPPLEMENT TO THE TARIFF WILL
BE ISSUED EXCEPT FOR THE PURPOSE OF
CANCELING THIS TARIFF.

Campbell, MO. LOCAL
ORIGINAL SHEET 2
REPLACING SOUTHEAST MO. TEL. CO.
P. S. C. Mo. No. 2
FIRST REVISED SHEET 1-A

P. S. C. Mo. No. 17 BASE RATE AREA MAP

RECEIVED
NOV 14 1955
MISSOURI
Public Service Comm.
FILED
DEC 14 1955

PUBLIC SERVICE COMMISSION



CANCELLED - Missouri Public Service Commission - 05/01/2024 - TN-2024-0278 - JI-2024-0142

Issued: November 14, 1955

Effective: December 14, 1955

By J. R. PETERSON, General Manager
Southwestern Bell Telephone Company
St. Louis, Missouri

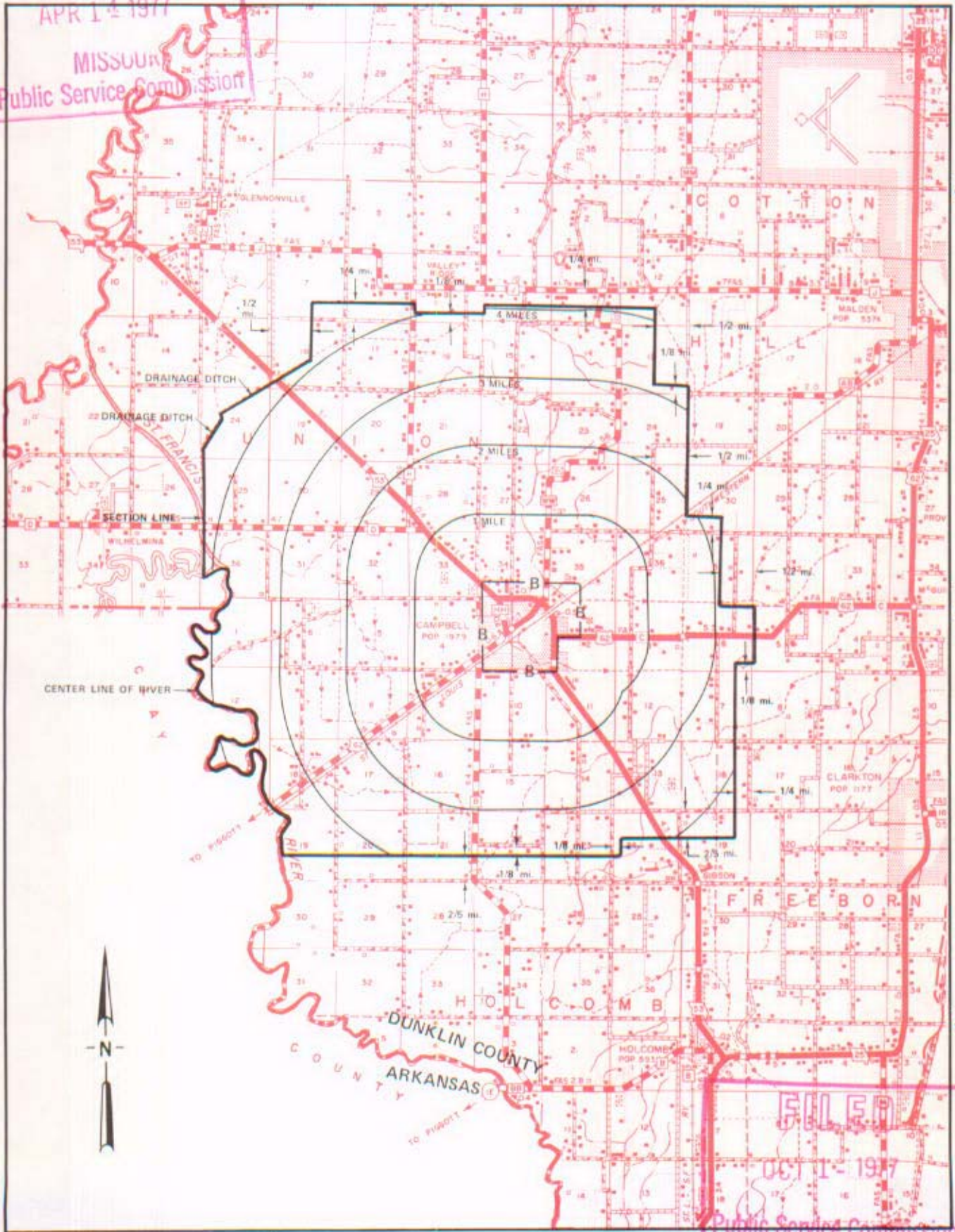
NO SUPPLEMENT TO THIS TARIFF WILL BE ISSUED EXCEPT FOR THE PURPOSE OF CANCELING THIS TARIFF.

Campbell, Missouri

P. S. C. Mo. No. 17

6th REVISED SHEET 3
REPLACING 5th REVISED SHEET 3

EXCHANGE AREA MAP



CANCELLED - Missouri Public Service Commission - 05/01/2024 - TN-2024-0278 - JI-2024-0142

RECEIVED

APR 14 1977

MISSOURI
Public Service Commission

FILED

OCT 1 1977

Public Service Commission

R8E | R9E | R9E | R10E

By R. R. SHOCKLEY, Vice President, Missouri
Southwestern Bell Telephone Company
St. Louis, Missouri

Issued: Apr 14 1977

Effective: OCT 1 1977

SBC PSC MO #17
Cape Girardeau, Missouri
3rd Revised Sheet 2
Replacing 2nd Revised Sheet 2

Non-Scannable Map

(Is viewable in the Data Center
200 Madison Street, 1st Floor
Jefferson City MO)

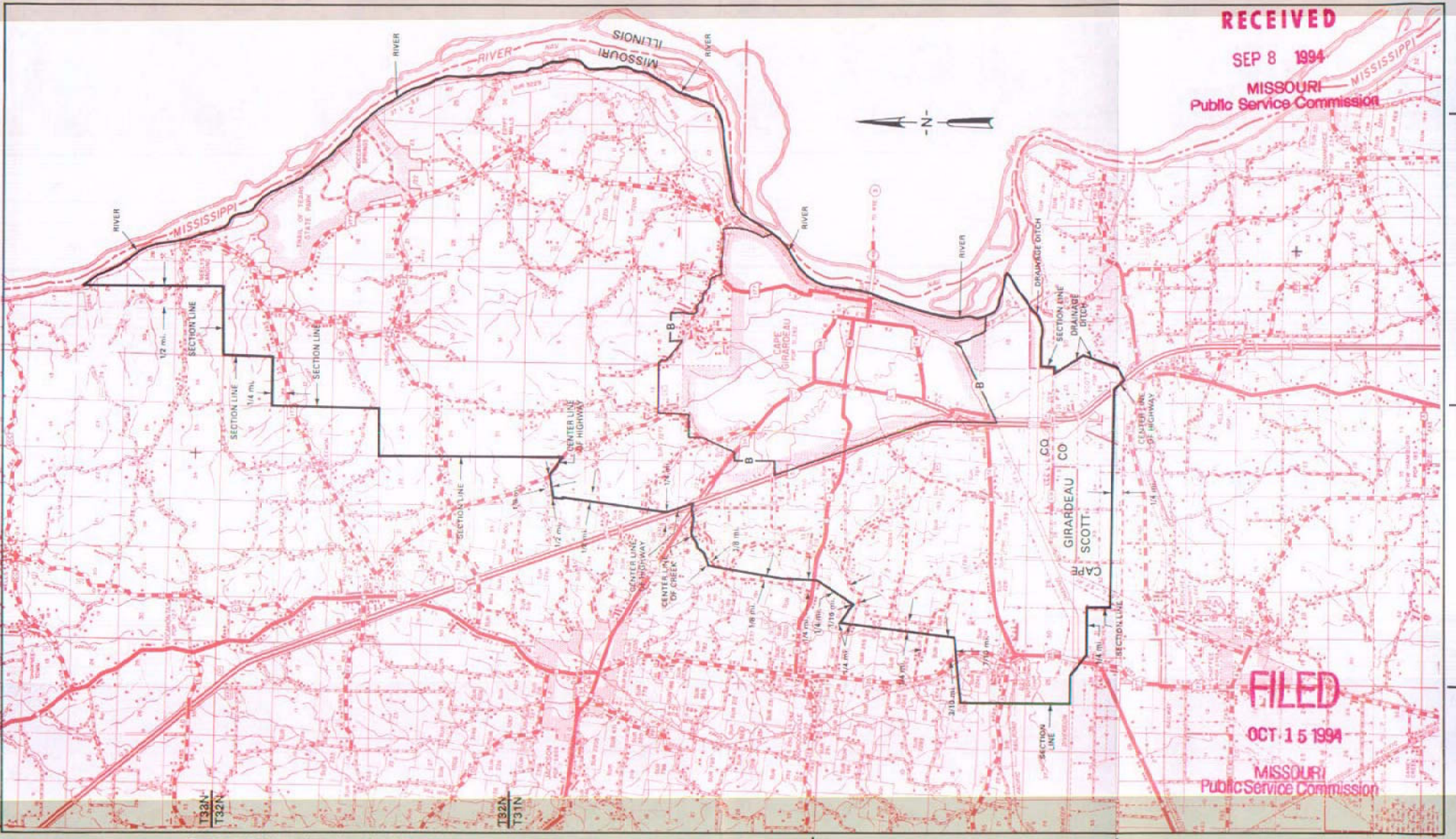
CANCELLED - Missouri Public Service Commission - 05/01/2024 - TN-2024-0278 - JJ-2024-0142

NO SUPPLEMENT TO THIS TARIFF WILL BE ISSUED EXCEPT FOR THE PURPOSE OF CANCELING THIS TARIFF.

P. S. C. Mo. No. 17 EXCHANGE AREA MAP

Cape Girardeau, Missouri
7th REVISED SHEET 3
REPLACING 6th REVISED SHEET 3

RECEIVED
SEP 8 1994
MISSOURI
Public Service Commission



FILED
OCT 15 1994
MISSOURI
Public Service Commission

Issued: September 15, 1994
By HORACE WILKINS, JR., President-Missouri
Southwestern Bell Telephone Company
St. Louis, Missouri

Effective: October 15, 1994

SBC PSC MO #17
Cardwell, Missouri
1st Revised Sheet 2
Replacing Original Sheet 2

Non-Scannable Map

(Is viewable in the Data Center
200 Madison Street, 1st Floor
Jefferson City MO)

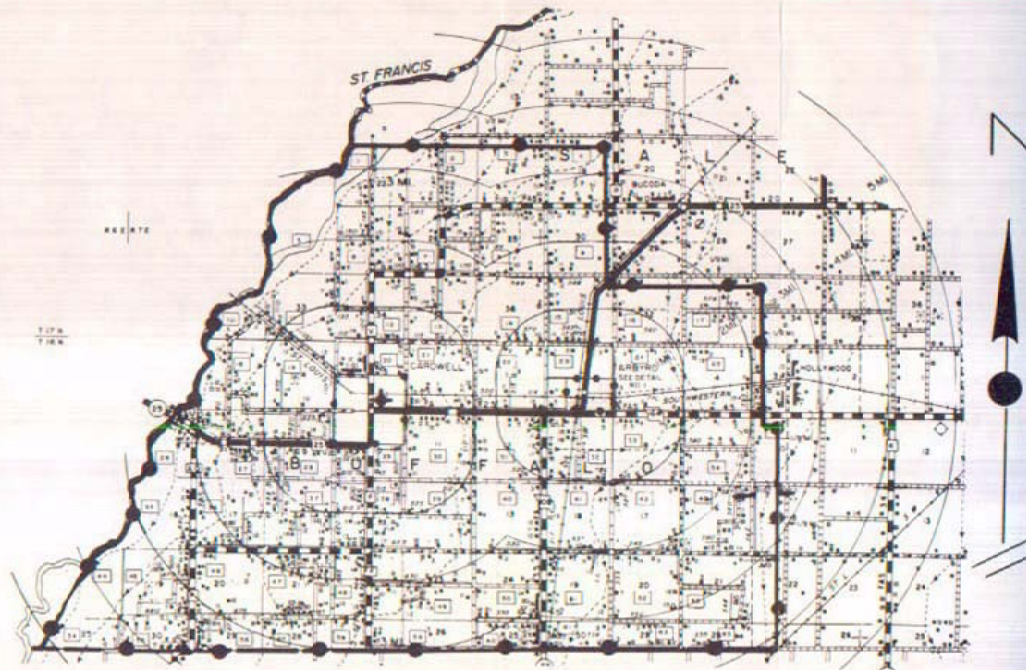
NO SUPPLEMENT TO THIS TARIFF WILL
BE ISSUED EXCEPT FOR THE PURPOSE OF
CANCELING THIS TARIFF.

Cardwell, Missouri
3rd REVISED SHEET 3 -
REPLACING 2nd REVISED SHEET 3 -

P. S. C. Mo. No. 17
EXCHANGE AREA MAP

RECEIVED
JAN 20 1966
MISSOURI
Public Service Comm.

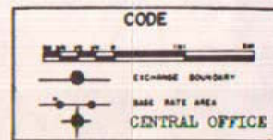
CARDWELL, MO.



FILED

FEB 23 1966

PUBLIC SERVICE COMMISSION



Issued: January 21, 1966

Effective: March 1, 1966

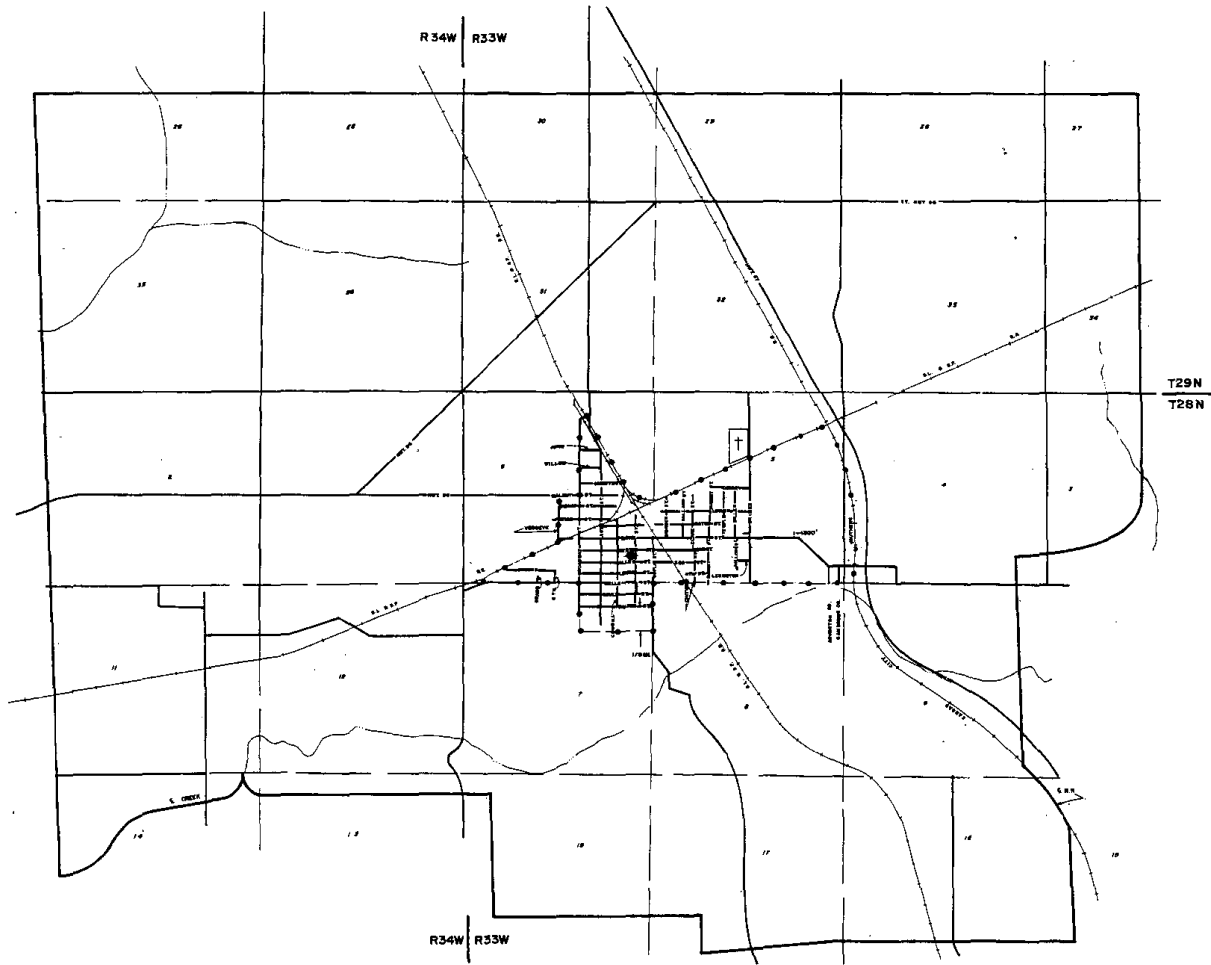
By R. R. SHOCKLEY, Vice President and General Manager
Southwestern Bell Telephone Company
St. Louis, Missouri

CANCELLED - Missouri Public Service Commission - 05/01/2024 - TN-2024-0278 - JI-2024-0142

NO SUPPLEMENT TO THIS TARIFF SHALL BE ISSUED EXCEPT FOR THE PURPOSE OF CANCELING THIS TARIFF.

P. S. C. Mo. No. 17
BASE RATE AREA MAP

Cam Junction, Missouri
REVISED SHEET 2
REPLACING ORIGINAL SHEET 2



CODE

0 1/2 1 1 1/2 2

BASE RATE AREA

TOWNLINE BOUNDARY

CENTRAL OFFICE

RECEIVED

JAN 20 1966

MISSOURI

Public Service Comm.

N

FILED

FEB 23 1966

PUBLIC SERVICE COMMISSION

NO SUPPLEMENT TO THIS TARIFF WILL BE ISSUED EXCEPT FOR THE PURPOSE OF CANCELING THIS TARIFF.

P. S. C. Mo. No. 17 EXCHANGE AREA MAP

Carl Junction, Missouri
RECEIVED
4th REVISED SHEET 3
REPLACING 3rd REVISED SHEET 3

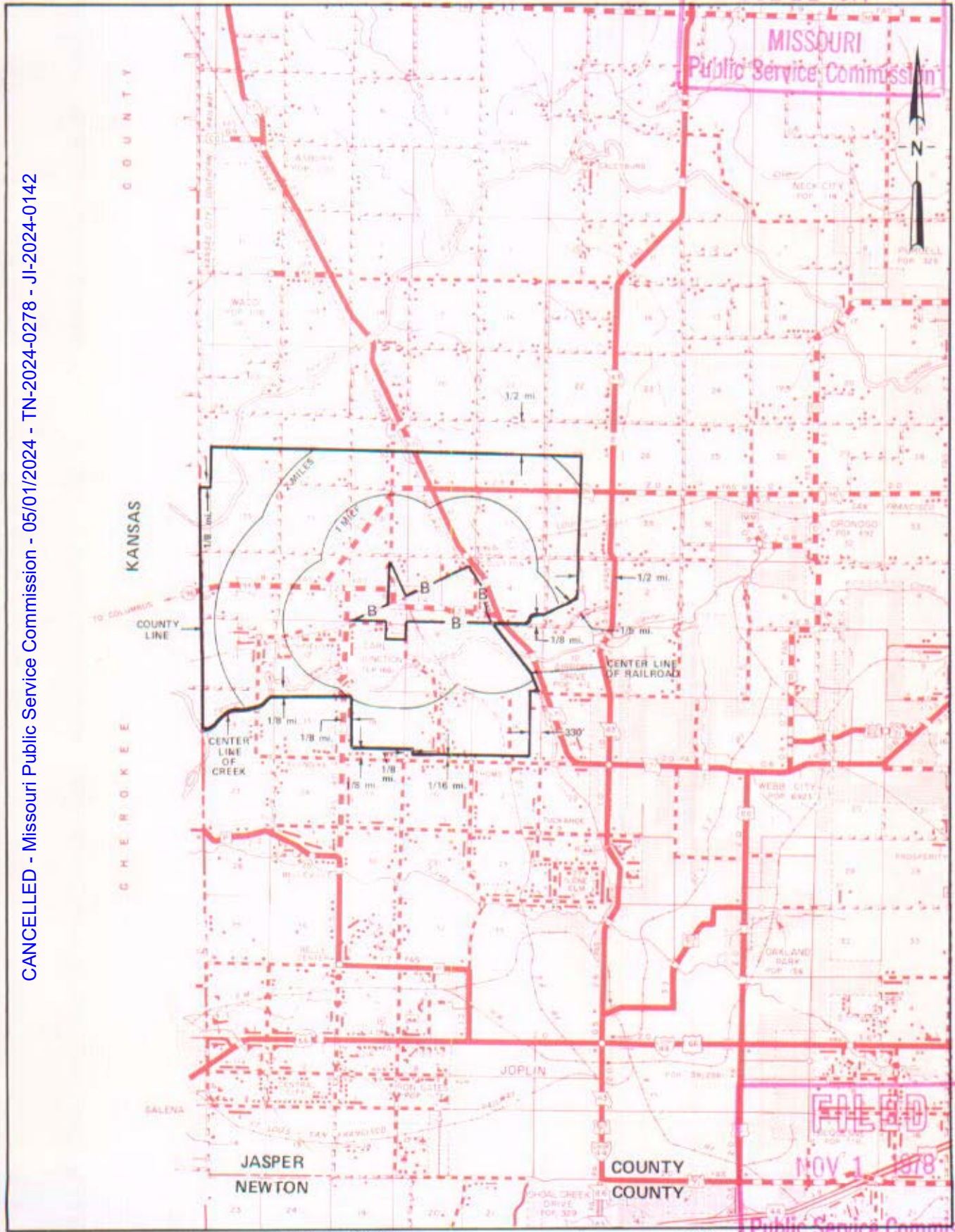
JUL 11 1977

MISSOURI
Public Service Commission

T30N
T29N



CANCELLED - Missouri Public Service Commission - 05/01/2024 - TN-2024-0278 - JI-2024-0142



T29N
T28N

T28N
T27N

FILED

NOV 1 1978

Public Service Commission

R34W | R33W R33W R32W

By R. R. SHOCKLEY, Vice President, Missouri
Southwestern Bell Telephone Company
St. Louis, Missouri

Issued: July 11, 1977

Effective: NOV 1 - 1978

SBC PSC MO #17
Carrollton, Missouri
2nd Revised Sheet 2
Replacing 1st Sheet 2

Non-Scannable Map

(Is viewable in the Data Center
200 Madison Street, 1st Floor
Jefferson City MO)

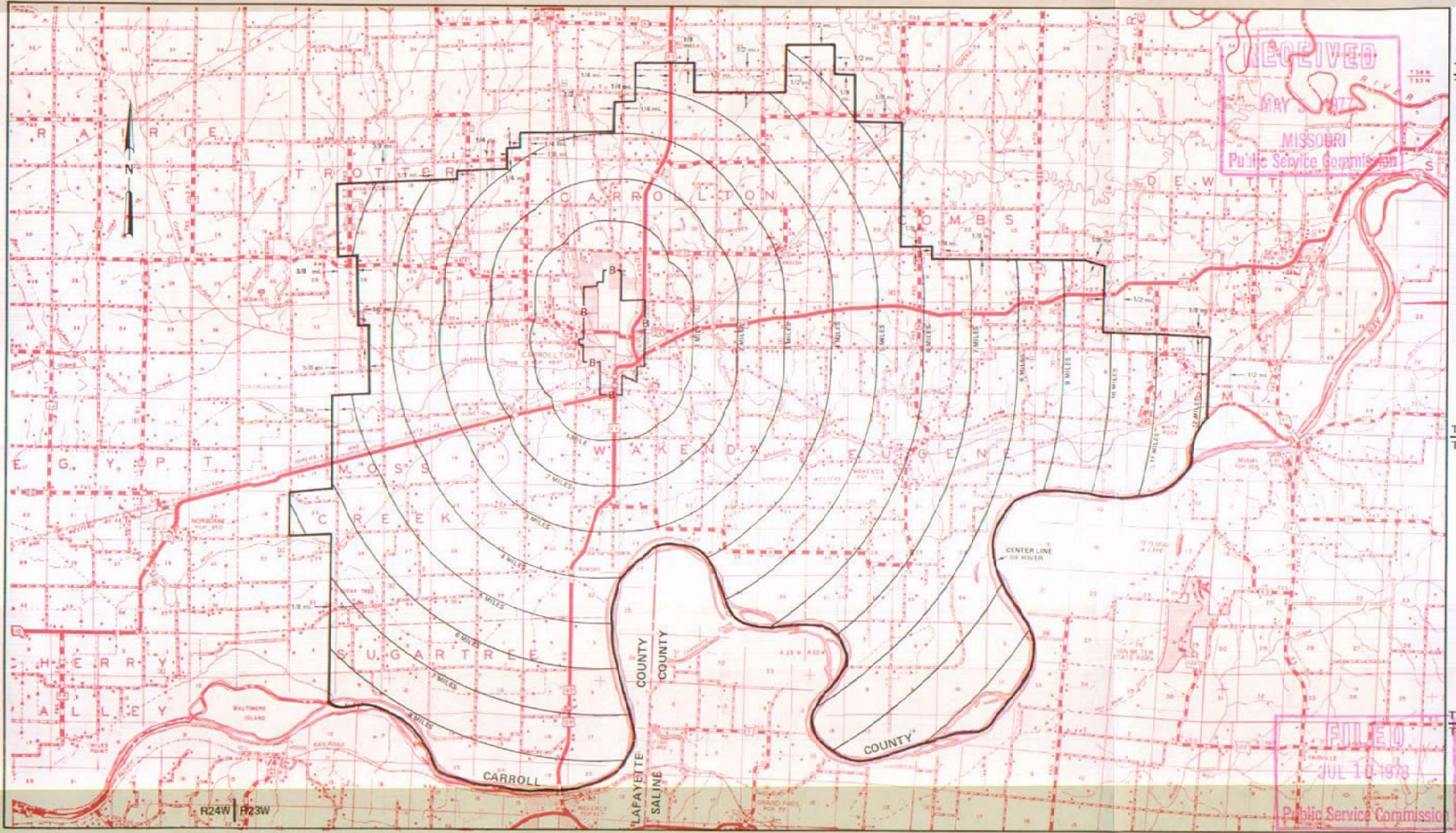
CANCELLED - Missouri Public Service Commission - 05/01/2024 - TN-2024-0278 - JI-2024-0142

NO SUPPLEMENT TO THIS TARIFF WILL BE ISSUED EXCEPT FOR THE PURPOSE OF CANCELING THIS TARIFF.

P. S. C. Mo. No. 17 EXCHANGE AREA MAP

Carrollton, Missouri

7th REVISED SHEET 3
REPLACING 6th REVISED SHEET 3



RECEIVED
MAY 3 1977
MISSOURI
Public Service Commission

FILED
JUL 10 1978
Public Service Commission

Issued: May 10, 1977

By R. R. SHOCKLEY, Vice President, Missouri
Southwestern Bell Telephone Company
St. Louis, Missouri

Effective: JUL 10 1978

SOUTHWESTERN BELL TELEPHONE COMPANY
LOCAL EXCHANGE TARIFF
SUPERSEDING ALL TARIFFS PREVIOUSLY ISSUED

This exchange was included in the Webb City Exchange Area as of July 28, 1928, and, therefore, all rates and rate practices formerly authorized for this exchange are withdrawn.

RECEIVED
APR 12 1930
DAVID P. JAMES, JR.
PUBLIC SERVICE COM.

CANCELLED - Missouri Public Service Commission - 05/01/2024 - TN-2024-0278 - JI-2024-0142

SBC PSC MO #17
Carthage, Missouri
2nd Revised Sheet 2
Replacing 1st Revised Sheet 2

Non-Scannable Map

(Is viewable in the Data Center
200 Madison Street, 1st Floor
Jefferson City MO)

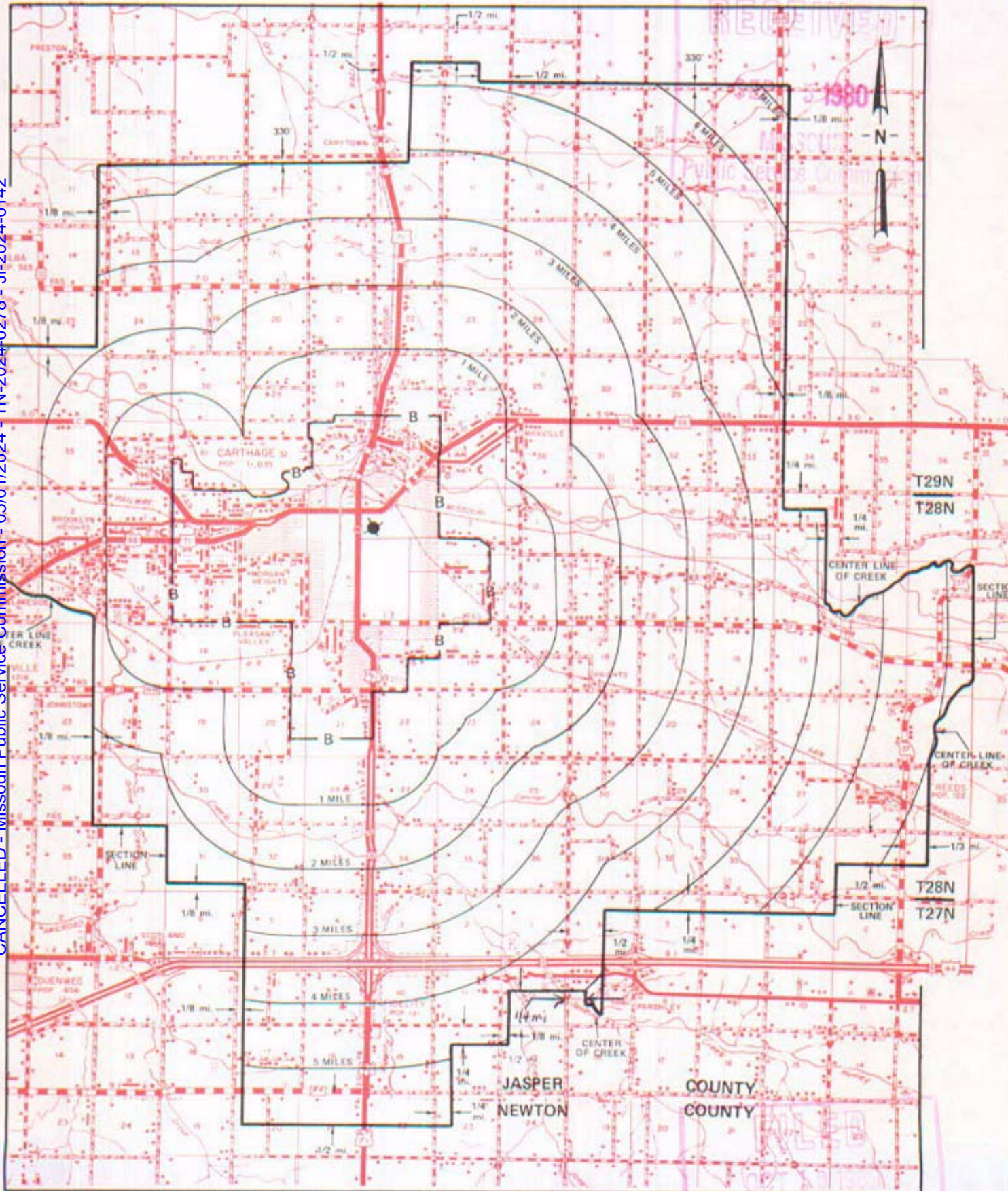
NO SUPPLEMENT TO THIS TARIFF WILL BE ISSUED EXCEPT FOR THE PURPOSE OF CANCELING THIS TARIFF.

P. S. C. Mo. No. 17 EXCHANGE AREA MAP

Carthage, Missouri

10th REVISED SHEET 3
REPLACING 9th REVISED SHEET 3

CANCELLED - Missouri Public Service Commission - 05/01/2024 - TN-2024-0278 - JI-2024-0142



R32W | R31W

R31W | R30W

By R. R. SHOCKLEY, Vice President, Missouri
Southwestern Bell Telephone Company

Public Service Commission
Effective: OCT 10, 1980

Issued: SEPT 9, 1980

NO SUPPLEMENT TO THIS TARIFF WILL BE ISSUED EXCEPT FOR THE PURPOSE OF CANCELING THIS TARIFF.

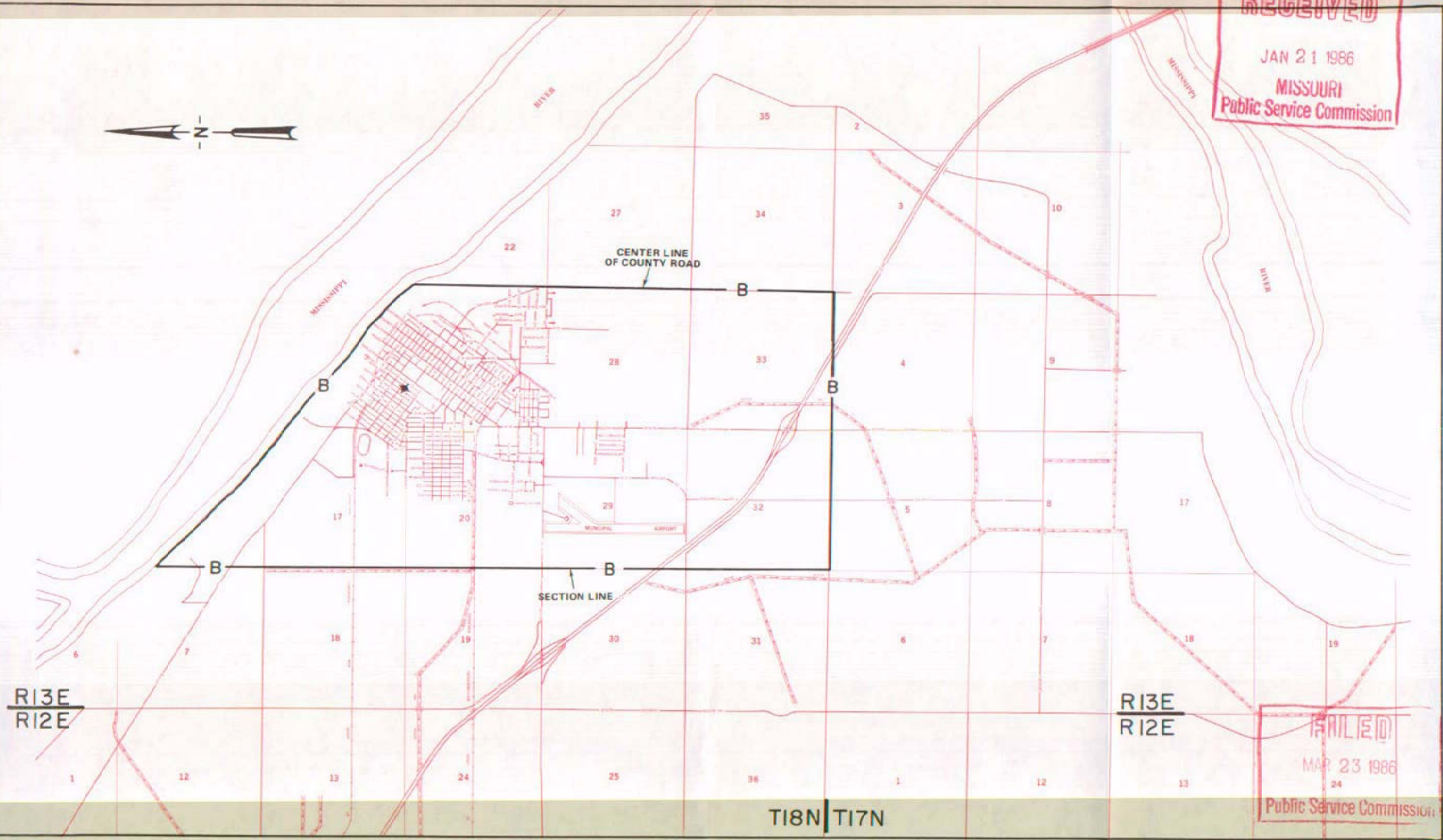
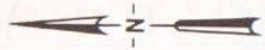
P. S. C. Mo. No. 17

Caruthersville, Missouri

2nd REVISED SHEET 2
REPLACING 1st REVISED SHEET 2

BASE RATE AREA MAP

RECEIVED
JAN 21 1986
MISSOURI
Public Service Commission



CANCELLED - Missouri Public Service Commission - 05/01/2024 - TN-2024-0278 - JI-2024-0142

By R.D. BARRON, PRESIDENT—MISSOURI DIVISION
Southwestern Bell Telephone Company
St. Louis, Missouri

Issued: January 27, 1986

FILED
MAR 23 1986
24
Public Service Commission

Effective: March 23, 1986

NO SUPPLEMENT TO THIS TARIFF WILL BE ISSUED EXCEPT FOR THE PURPOSE OF CANCELING THIS TARIFF.

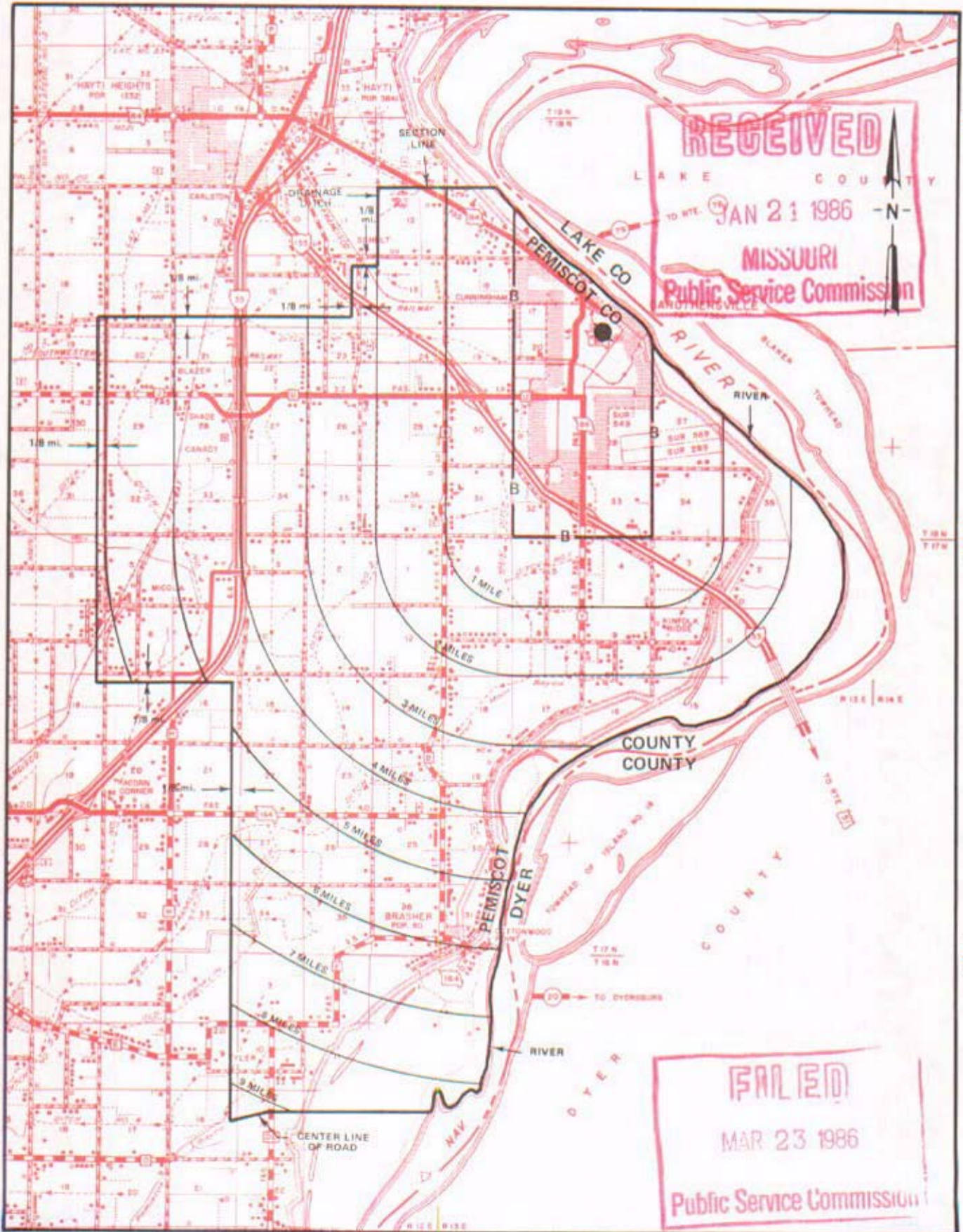
P. S. C. Mo. No. 17

Caruthersville, Missouri

EXCHANGE AREA MAP

5th REVISED SHEET 3
REPLACING 4th REVISED SHEET 3

CANCELLED - Missouri Public Service Commission - 05/01/2024 - TN-2024-0278 - JI-2024-0142



R11W | R12W

R12E | R13E

R13E | R14E

By R.D. BARRON, PRESIDENT—MISSOURI DIVISION
Southwestern Bell Telephone Company

JANUARY 21, 1986

NO SUPPLEMENT TO THIS TARIFF WILL BE ISSUED EXCEPT FOR THE PURPOSE OF CANCELING THIS TARIFF.

P. S. C. Mo. No. 17

Cedar Hill, Missouri

BASE RATE AREA MAP

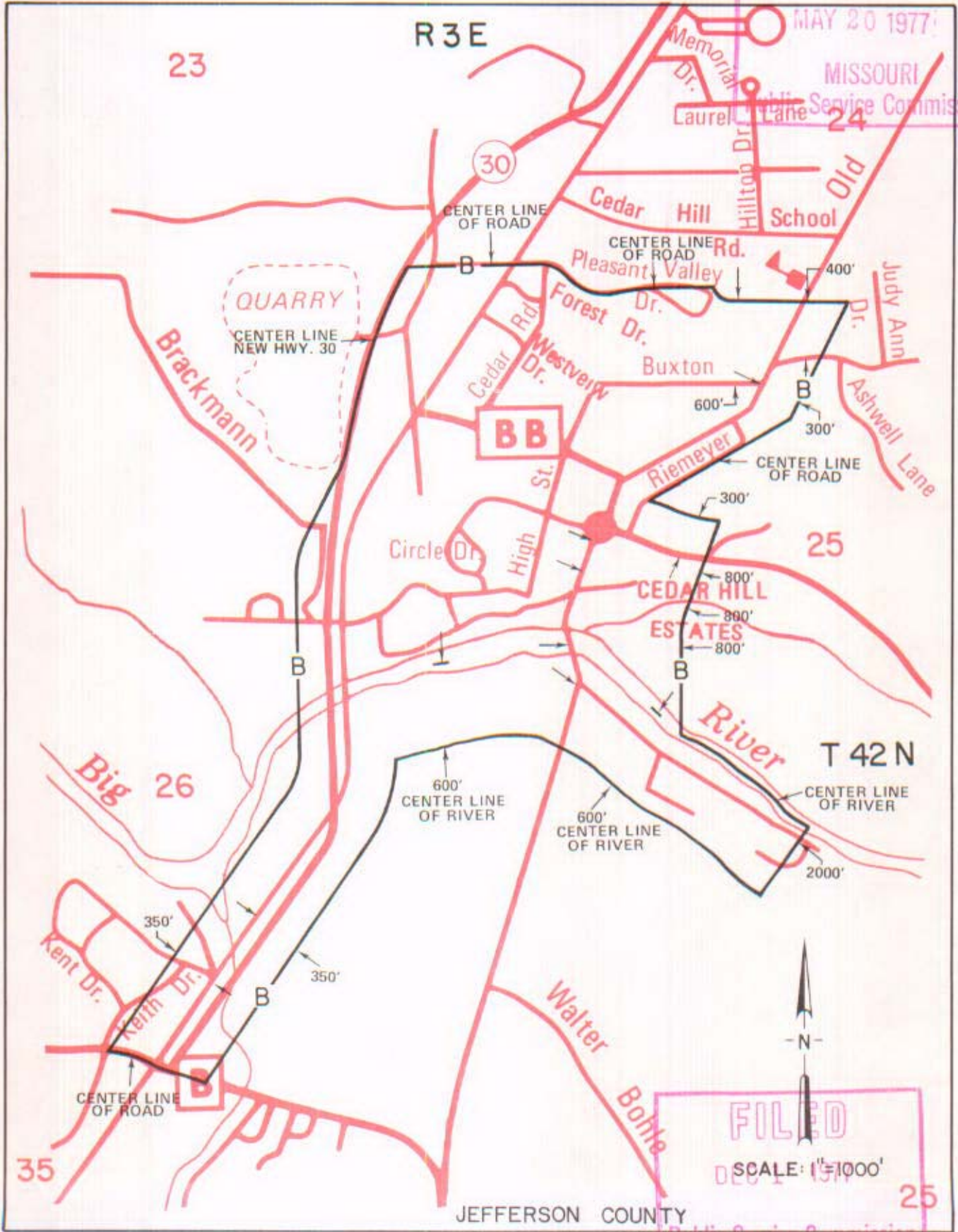
REPLACING 2nd REVISED SHEET 2
1st REVISED SHEET 2

RECEIVED

MAY 20 1977

MISSOURI Public Service Commission

CANCELLED - Missouri Public Service Commission - 05/01/2024 - TN-2024-0278 - JI-2024-0142



By R. R. SHOCKLEY, Vice President, Missouri

Southwestern Bell Telephone
St. Louis, Missouri

Issued: MAY 23 1977

Effective: DEC 1 1977

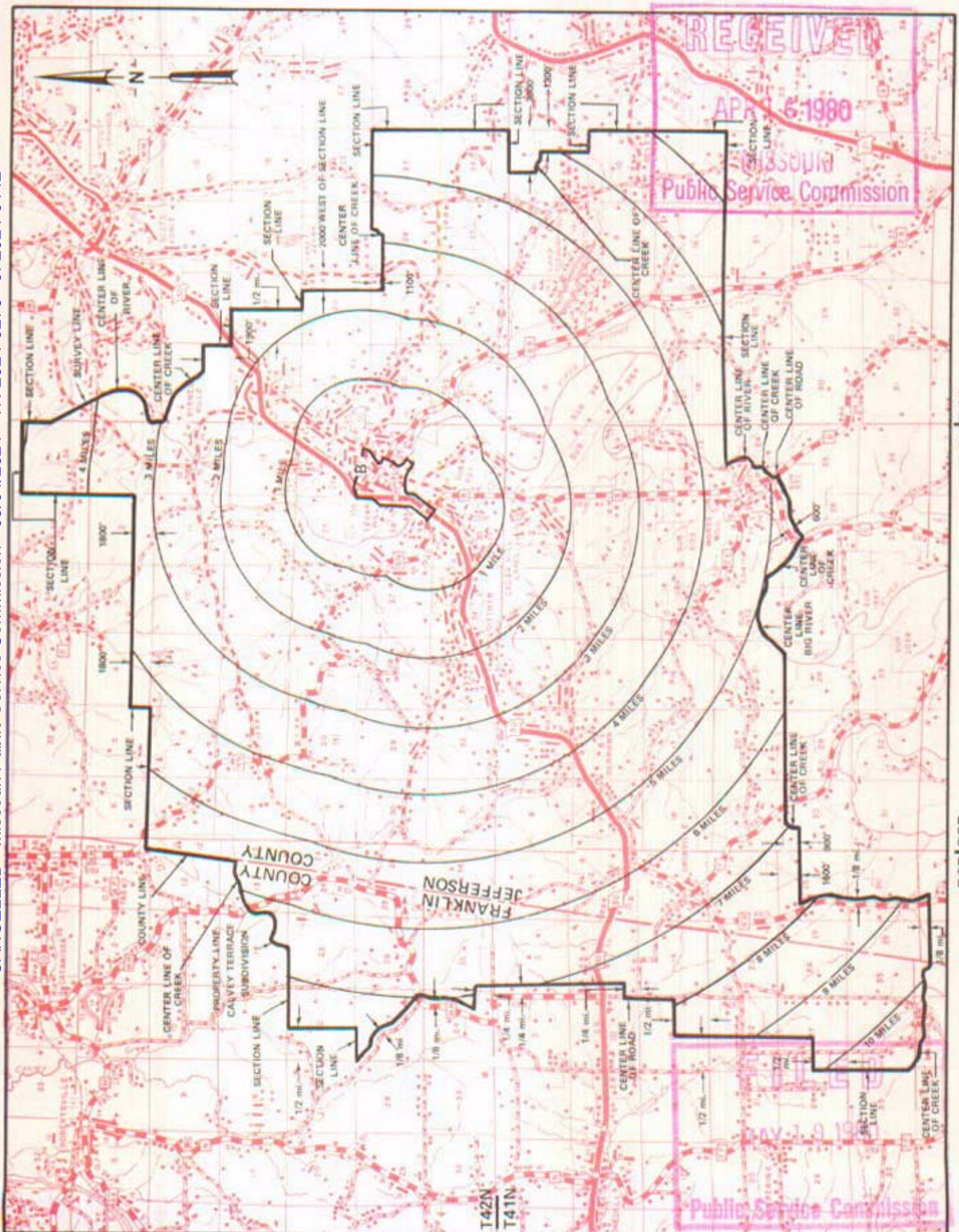
NO SUPPLEMENT TO THIS TARIFF WILL BE ISSUED EXCEPT FOR THE PURPOSE OF CANCELING THIS TARIFF.

P. S. C. Mo. No. 17

Cedar Hill, Missouri

EXCHANGE AREA MAP REPLACING 11th REVISED SHEET 3 10th REVISED SHEET 3

CANCELLED - Missouri Public Service Commission - 05/01/2024 - TN-2024-0278 - JI-2024-0142



By R. R. SHOCKLEY, Vice President, Missouri Southwestern Bell Telephone Company

T43N
T42N

T42N
T41N

T41N
T40N

R5E R4E

R6E R5E

SBC PSC MO #17

Center, Missouri

Original Sheet 2

Replacing Western Light & Telephone

Company's P.S.C. Mo. No. 4

Original Sheet 5

Ralls County

Non-Scannable Map

(Is viewable in the Data Center
200 Madison Street, 1st Floor
Jefferson City MO)

NO SUPPLEMENT TO THIS TARIFF WILL BE ISSUED EXCEPT FOR THE PURPOSE OF CANCELING THIS TARIFF.

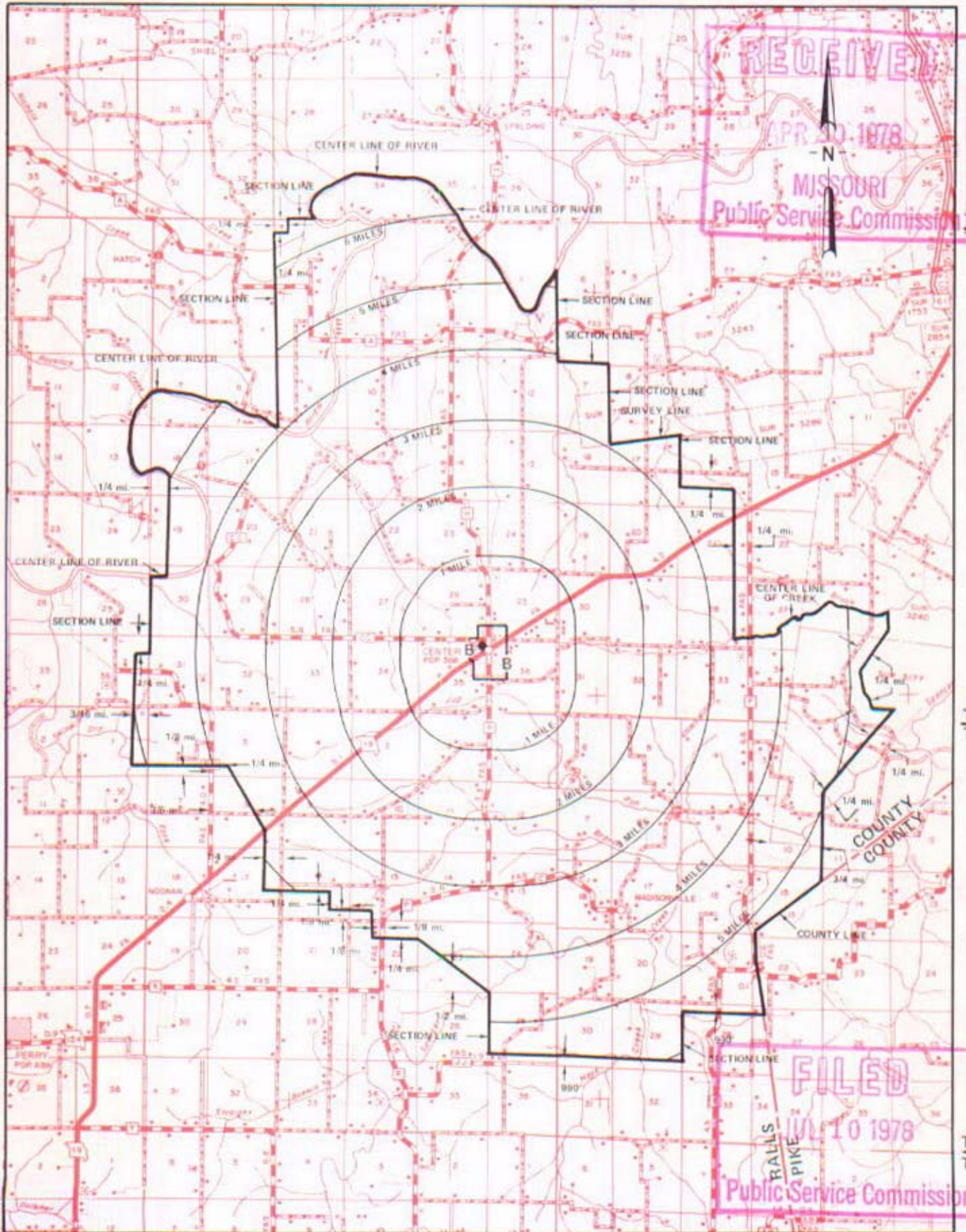
P. S. C. Mo. No. 17

Center, Missouri

EXCHANGE AREA MAP

6th REVISED SHEET 3 REPLACING 5th REVISED SHEET 3

CANCELLED - Missouri Public Service Commission - 05/01/2024 - TN-2024-0278 - JI-2024-0142



RECEIVED
 APR 30 1978
 MISSOURI
 Public Service Commission

FILED
 JUL 10 1978
 RALLS
 PIKE
 Public Service Commission

R7W | R6W

R6W | R5W

By R. R. SHOCKLEY, Vice President, Missouri Southwestern Bell Telephone Company

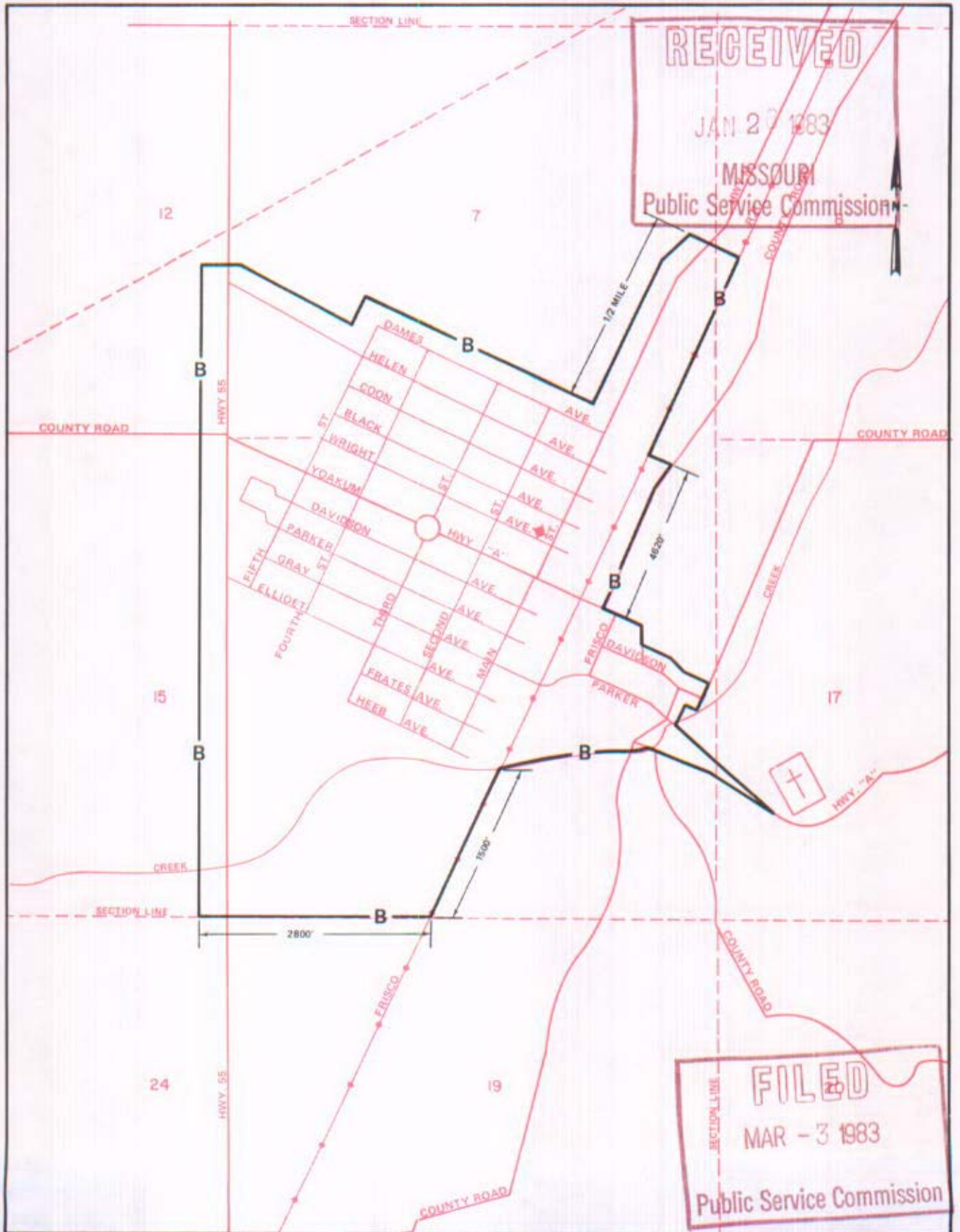
JUL 10 1978

NO SUPPLEMENT TO THIS TARIFF WILL BE ISSUED EXCEPT FOR THE PURPOSE OF CANCELING THIS TARIFF.

P. S. C. Mo. No. 17 BASE RATE AREA MAP

Chaffee, Missouri
2nd REVISED SHEET 2
REPLACING 1st REVISED SHEET 2

CANCELLED - Missouri Public Service Commission - 05/01/2024 - TN-2024-0278 - JI-2024-0142



Issued: FEBRUARY 1, 1983

By R. D. BARRON, Vice President, Missouri
Southwestern Bell Telephone Company
St. Louis, Missouri

Effective: MARCH 3, 1983

NO SUPPLEMENT TO THIS TARIFF WILL BE ISSUED EXCEPT FOR THE PURPOSE OF CANCELING THIS TARIFF.

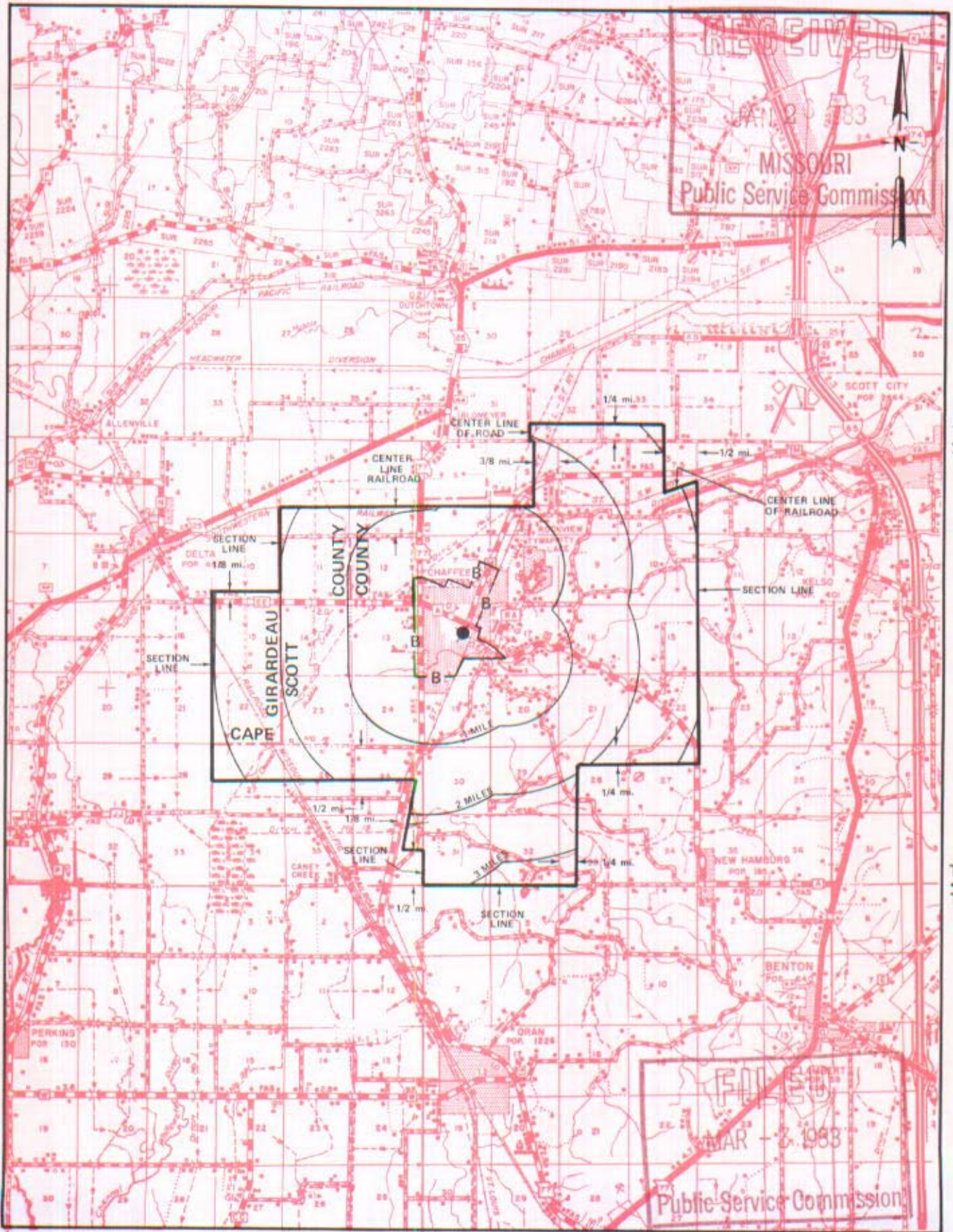
P. S. C. Mo. No. 17

Chaffee, Missouri

EXCHANGE AREA MAP

REPLACING 3rd REVISED SHEET 3
2nd REVISED SHEET 3

CANCELLED - Missouri Public Service Commission - 05/01/2024 - TN-2024-0278 - JI-2024-0142



By R. D. BARRON, Vice President, Missouri
Southwestern Bell Telephone Company
St. Louis, Missouri

Issued: FEBRUARY 1, 1983

Effective: MARCH 3 1983

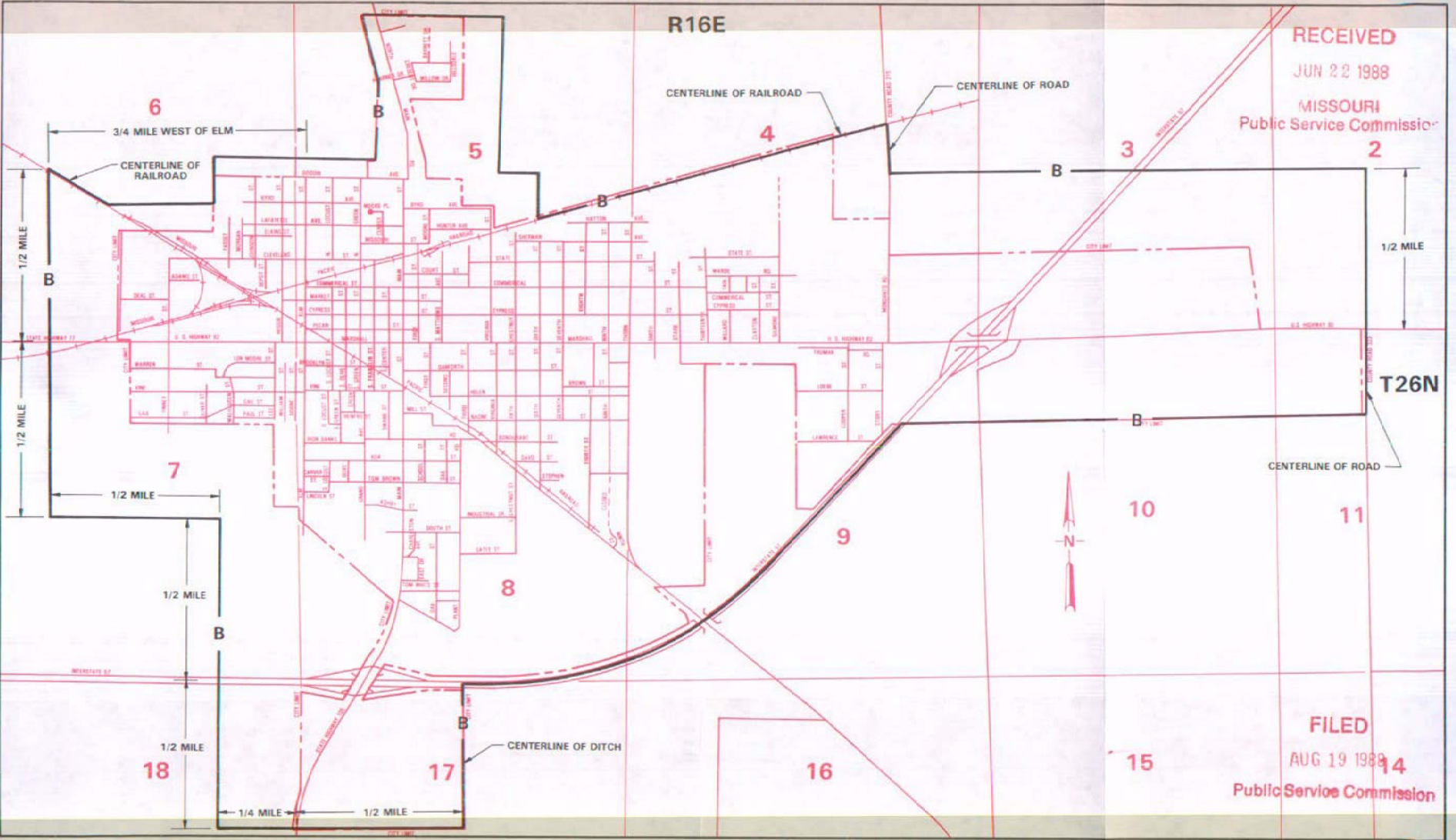
NO SUPPLEMENT TO THIS TARIFF WILL BE ISSUED EXCEPT FOR THE PURPOSE OF CANCELING THIS TARIFF.

P. S. C. Mo. No. 17
BASE RATE AREA MAP

Charleston, Missouri

2nd REVISED SHEET 2
REPLACING 1st REVISED SHEET 2

CANCELLED - Missouri Public Service Commission - 05/01/2024 - TN-2024-0278 - JI-2024-0142



RECEIVED
JUN 22 1988
MISSOURI
Public Service Commission

FILED
AUG 19 1988
Public Service Commission

Issued: JUN 23 1988

By R. D. BARRON, President, Missouri Division
Southwestern Bell Telephone Company
St. Louis, Missouri

Effective: AUG 19 1988

SBC PSC MO #17
Charleston, Missouri
Bertrand Island Bra
Original Sheet 2

Non-Scannable Map

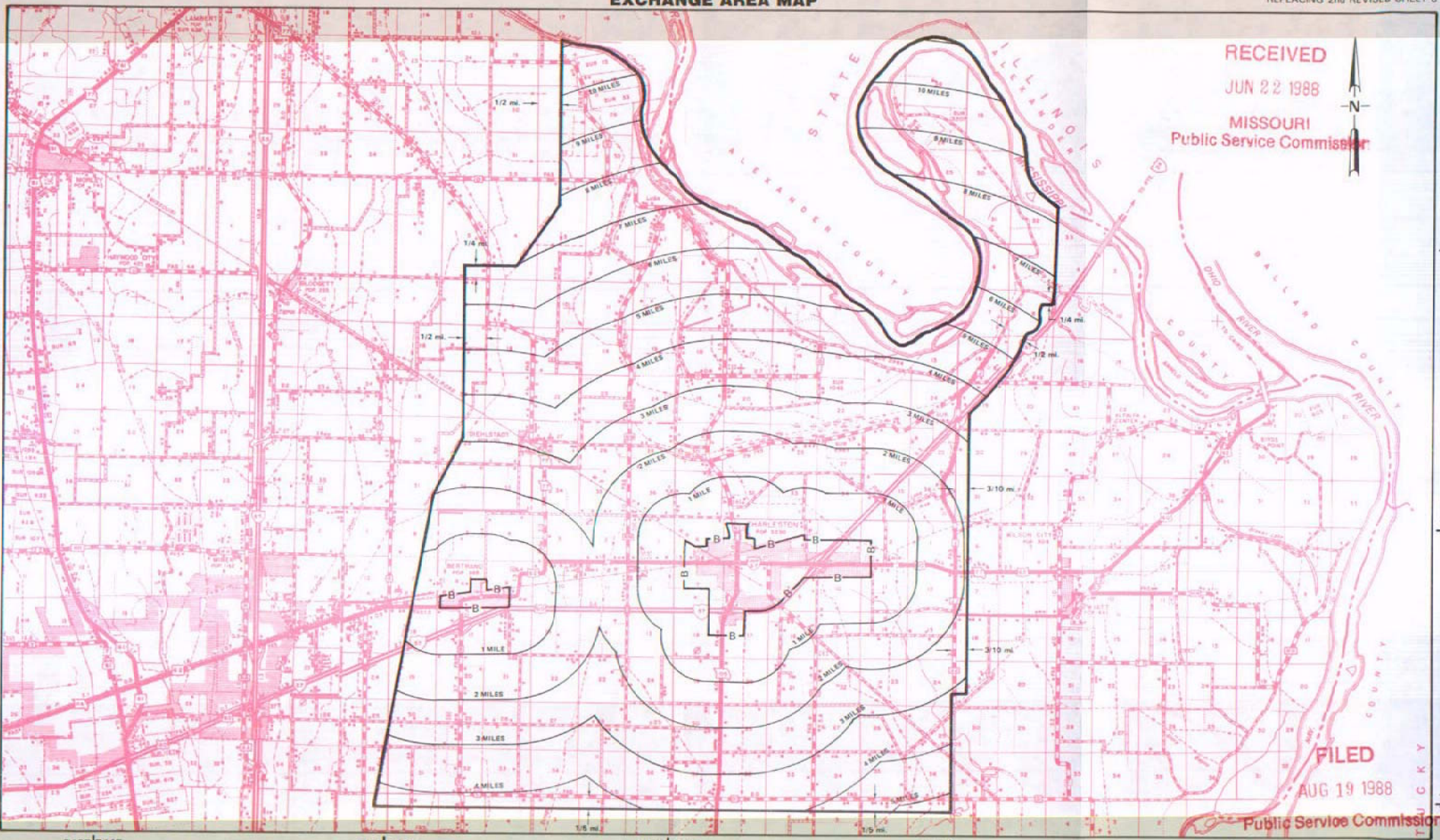
(Is viewable in the Data Center
200 Madison Street, 1st Floor
Jefferson City MO)

CANCELLED - Missouri Public Service Commission - 05/01/2024 - TN-2024-0278 - JI-2024-0142

NO SUPPLEMENT TO THIS TARIFF WILL BE ISSUED EXCEPT FOR THE PURPOSE OF CANCELING THIS TARIFF.

P. S. C. Mo. No. 17 EXCHANGE AREA MAP

Charleston, Missouri
3rd REVISED SHEET 3
REPLACING 2nd REVISED SHEET 3



RECEIVED
JUN 22 1988
MISSOURI
Public Service Commission

FILED
AUG 19 1988

Public Service Commission

Issued: JUN 23 1988

By R. D. BARRON, President, Missouri Division
Southwestern Bell Telephone Company
St. Louis, Missouri

Effective: AUG 19 1988

SBC PSC MO #17
Chesterfield, Missouri
15th Revised Sheet 2
Replacing 14th Revised Sheet 2

Non-Scannable Map

(Is viewable in the Data Center
200 Madison Street, 1st Floor
Jefferson City MO)

NO SUPPLEMENT TO THIS TARIFF WILL BE ISSUED EXCEPT FOR THE PURPOSE OF CANCELING THIS TARIFF.

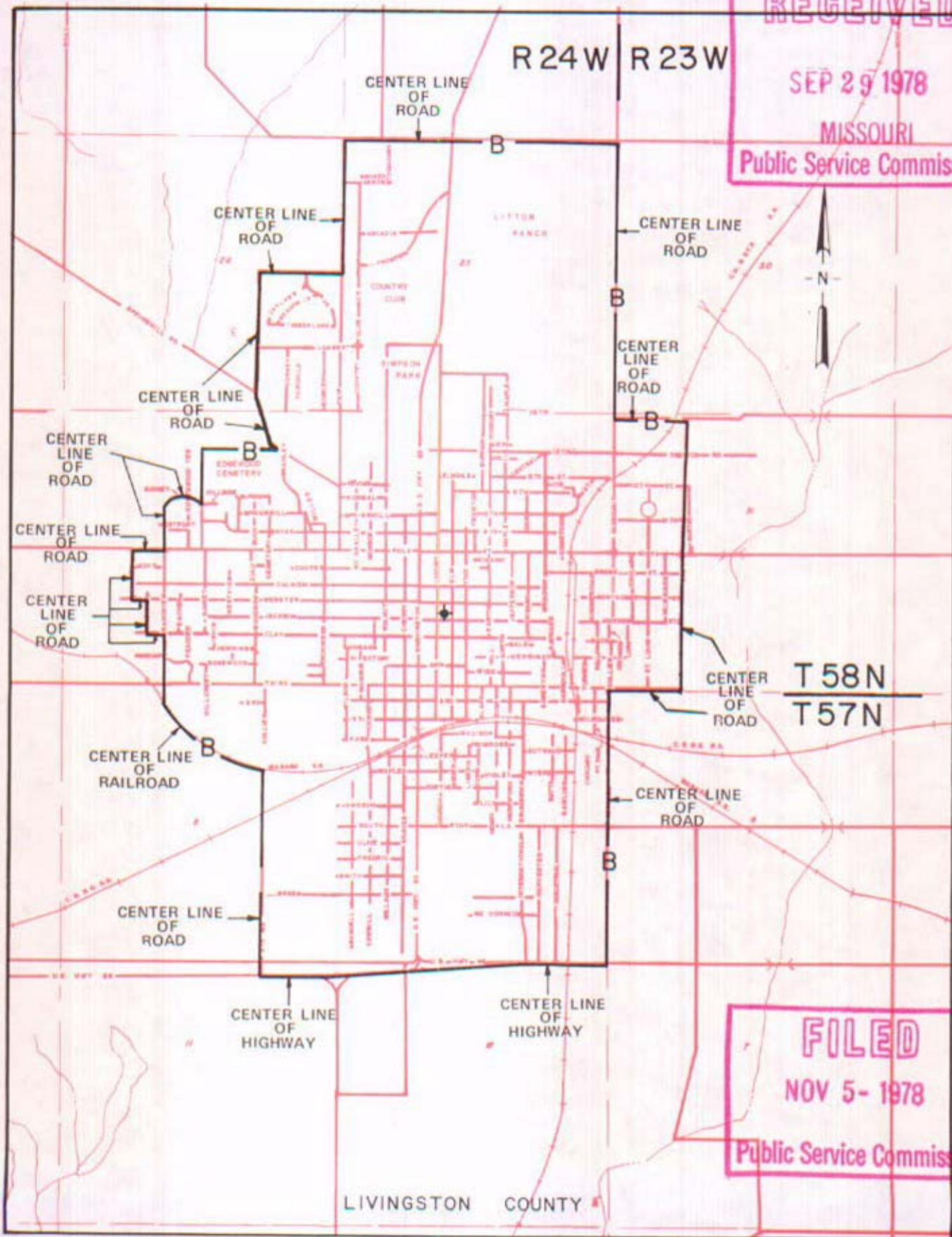
P. S. C. Mo. No. 17

Chillicothe, Missouri

BASE RATE AREA MAP

2nd REVISED SHEET 2 REPLACING 1st REVISED SHEET 2

RECEIVED
SEP 29 1978
MISSOURI
Public Service Commission



FILED
NOV 5- 1978
Public Service Commission

By R. R. SHOCKLEY, Vice President, Missouri Southwestern Bell Telephone Company

CANCELLED - Missouri Public Service Commission - 05/01/2024 - TN-2024-0278 - JI-2024-0142

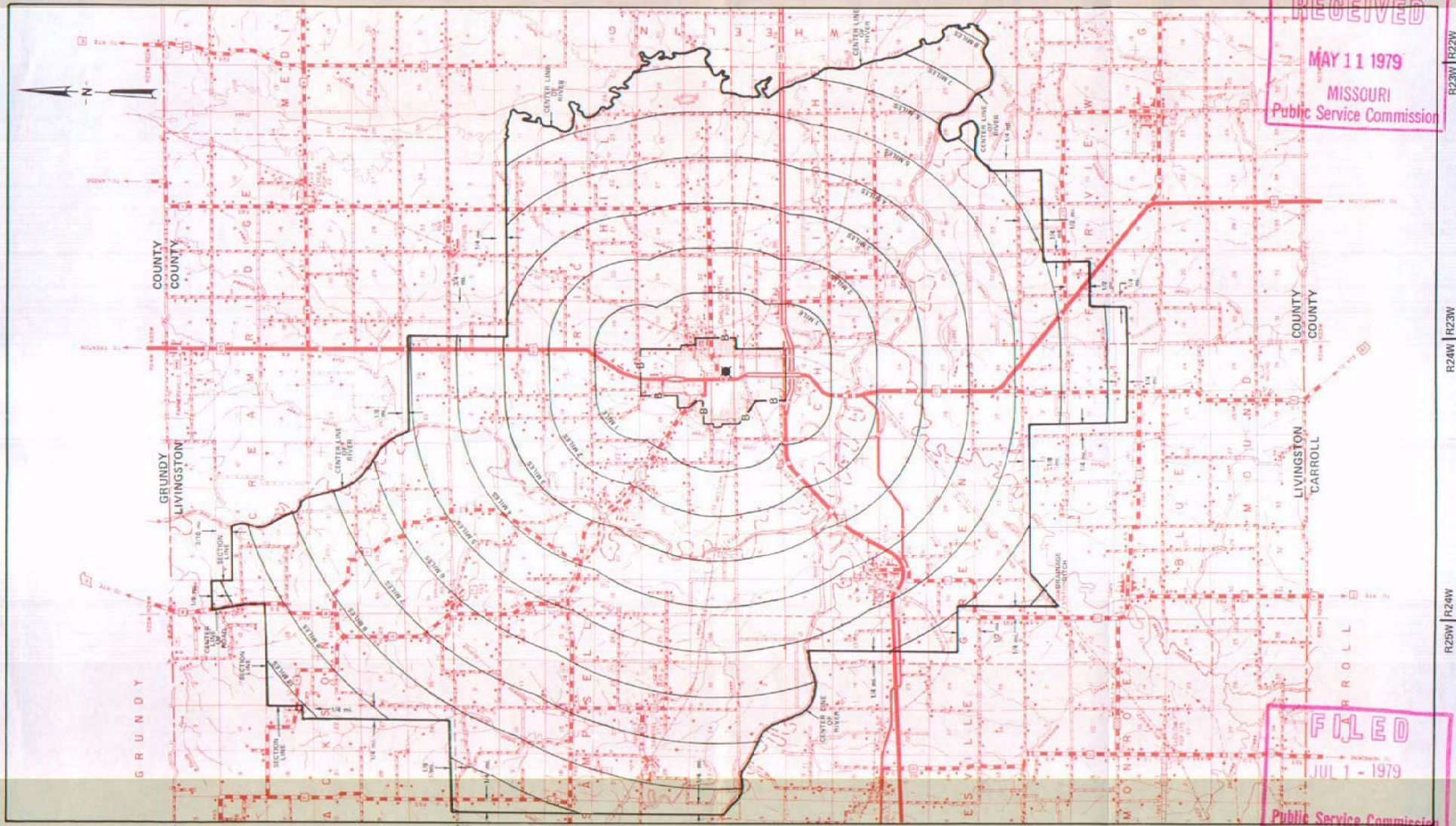
CANCELLED - Missouri Public Service Commission - 05/01/2024 - TN-2024-0278 - JI-2024-0142

NO SUPPLEMENT TO THIS TARIFF WILL BE ISSUED EXCEPT FOR THE PURPOSE OF CANCELING THIS TARIFF.

P. S. C. Mo. No. 17
EXCHANGE AREA MAP

Chillicothe, Missouri
11th REVISED SHEET 3
REPLACING 10th REVISED SHEET 3

RECEIVED
MAY 11 1979
MISSOURI
Public Service Commission



FILED
JUL 1 - 1979
Public Service Commission

Issued: MAY 11, 1979

T58N
T59N
By R. R. SHOCKLEY, Vice President, Missouri
Southwestern Bell Telephone Company
St. Louis, Missouri
T57N

T57N
T56N
Effective: JUL 1 - 1979

NO SUPPLEMENT TO THIS TARIFF WILL BE ISSUED EXCEPT FOR THE PURPOSE OF CANCELING THIS TARIFF.

P. S. C. Mo. No. 17

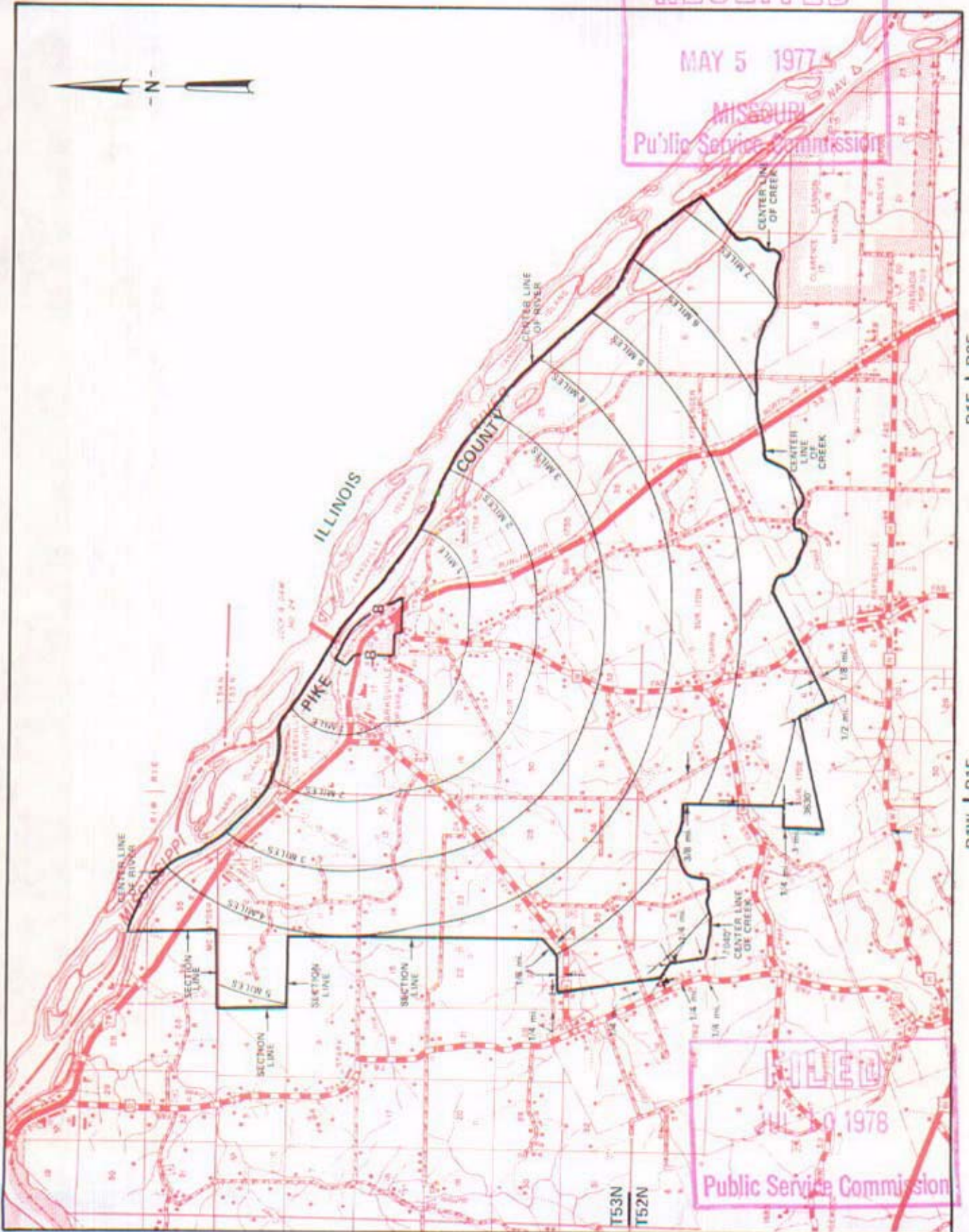
Clarksville, Missouri

EXCHANGE AREA MAP

4th REVISED SHEET 3
REPLACING 3rd REVISED SHEET 3

CANCELLED - Missouri Public Service Commission - 05/01/2024 - TN-2024-0278 - JI-2024-0142

RECEIVED
MAY 5 1977
MISSOURI
Public Service Commission



FILED
JUL 10 1978
Public Service Commission

T54N
T53N

T53N
T52N

R1E | R2E

R1W | R1E

By R. R. SHOCKLEY, Vice President, Missouri
Southwestern Bell Telephone Company

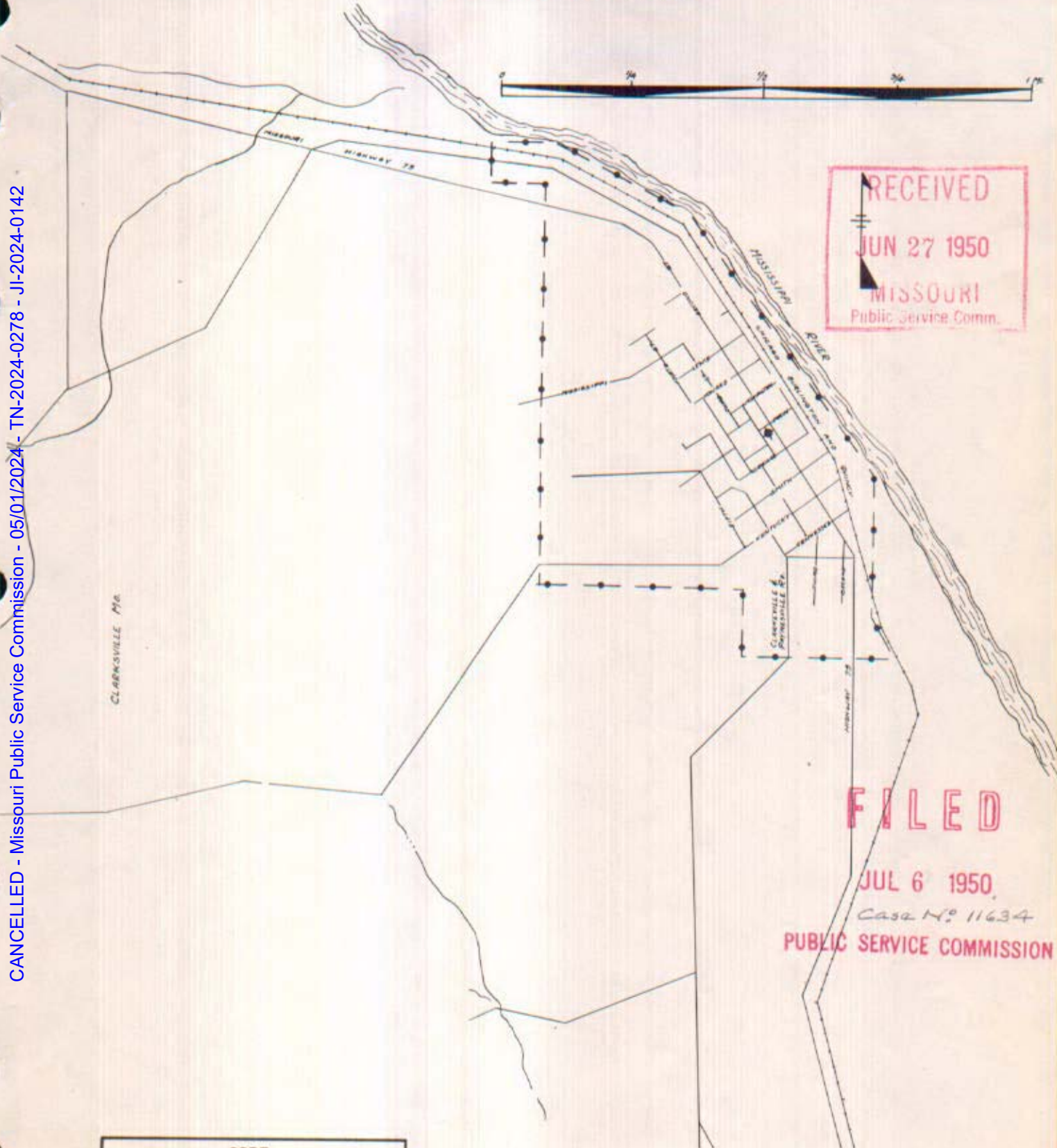
May 10 1977

JUL 10 1978

NO SUPPLEMENT TO THIS TARIFF WILL BE ISSUED EXCEPT FOR THE PURPOSE OF CANCELING THIS TARIFF.

Clarksville, Missouri
ORIGINAL SHEET 2
REPLACING ORIGINAL SHEET 1-A



P. S. C.-Mo. No. 17
BASE RATE AREA MAP



RECEIVED
JUN 27 1950
MISSOURI
Public Service Comm.

FILED
JUL 6 1950
Case No. 11634
PUBLIC SERVICE COMMISSION

CANCELLED - Missouri Public Service Commission - 05/01/2024 - TN-2024-0278 - JI-2024-0142

CODE
BELL CENTRAL OFFICE: 
BASE RATE AREA LIMITS: 

Issued: June 27, 1950

Effective: July 6, 1950

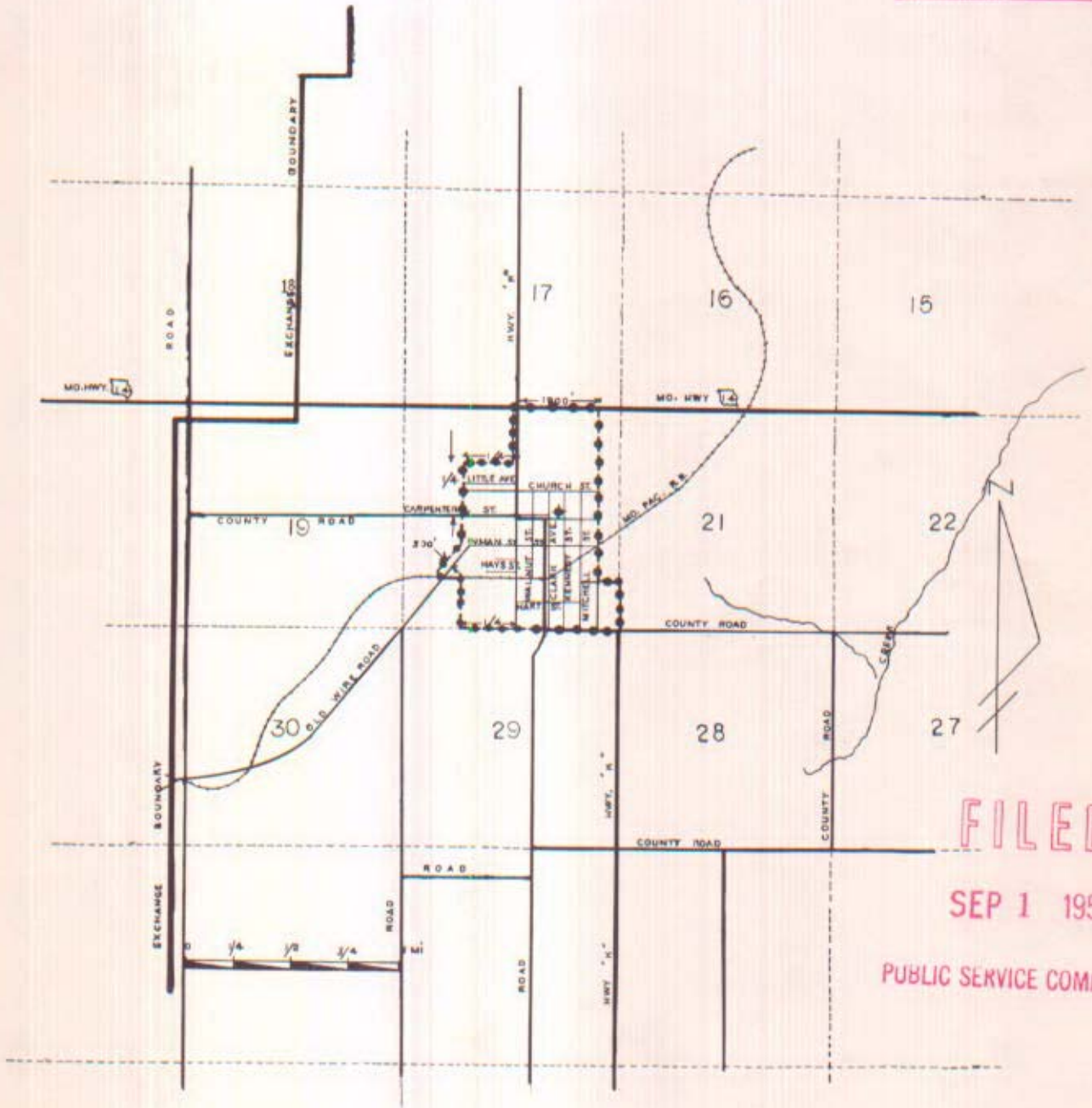
By H. R. TOWLES, General Manager
Southwestern Bell Telephone Company
St. Louis, Missouri

NO SUPPLEMENT TO THIS TARIFF WILL BE ISSUED EXCEPT FOR THE PURPOSE OF CANCELING THIS TARIFF.

Clever, Missouri
ORIGINAL SHEET 2

P. S. C. Mo. No. 17
BASE RATE AREA MAP

RECEIVED
AUG 8 1958
MISSOURI
Public Service Comm.



FILED

SEP 1 1958

PUBLIC SERVICE COMMISSION

CANCELLED - Missouri Public Service Commission - 05/01/2024 - TN-2024-0278 - JI-2024-0142

ISSUED UNDER ORDER OF THE PUBLIC SERVICE COMMISSION IN CASE NO. 13881 ✓

Issued: August 12, 1958

Effective: September 1, 1958

By E. G. GREBER, Vice President and General Manager
Southwestern Bell Telephone Company
St. Louis, Missouri

NO SUPPLEMENT TO THIS TARIFF WILL BE ISSUED EXCEPT FOR THE PURPOSE OF CANCELING THIS TARIFF.

P. S. C. Mo. No. 17

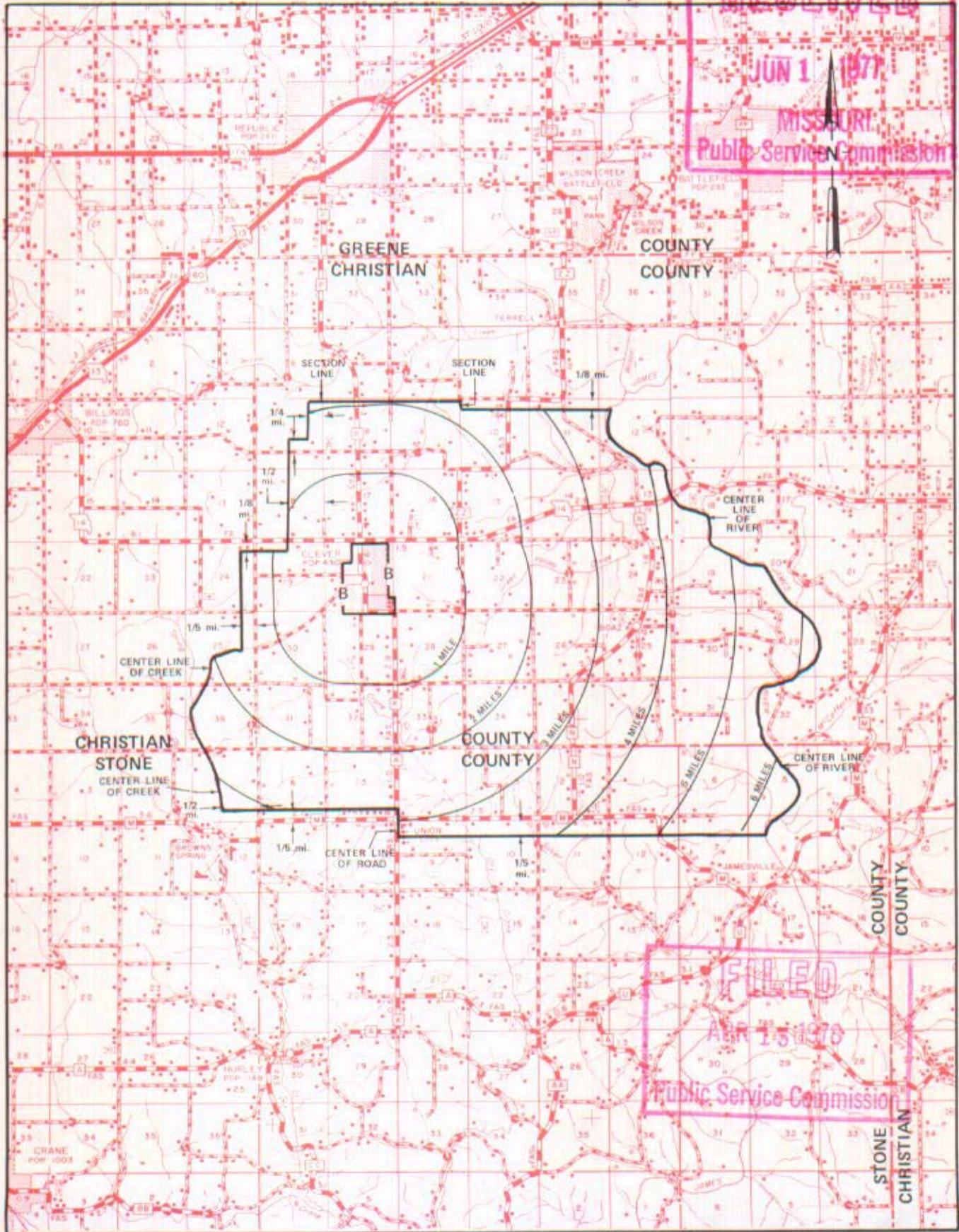
Clever, Missouri

3rd REVISED SHEET 3
REPLACING 2nd REVISED SHEET 3

EXCHANGE AREA MAP

RECEIVED
JUN 1 1977
MISSOURI
Public Service Commission

CANCELLED - Missouri Public Service Commission - 05/01/2024 - TN-2024-0278 - JI-2024-0142



T28N
T27N

T27N
T26N

FILED
APR 15 1976
Public Service Commission

T26N
T25N

R24W | R23W | R23W | R22W

By R. R. SHOCKLEY, Vice President, Missouri
Southwestern Bell Telephone Company
St. Louis, Missouri

Issued: June 1, 1977

Effective: APR 15 1978

CANCELLED - Missouri Public Service Commission - 05/01/2024 - TN-2024-0278 - JI-2024-0142

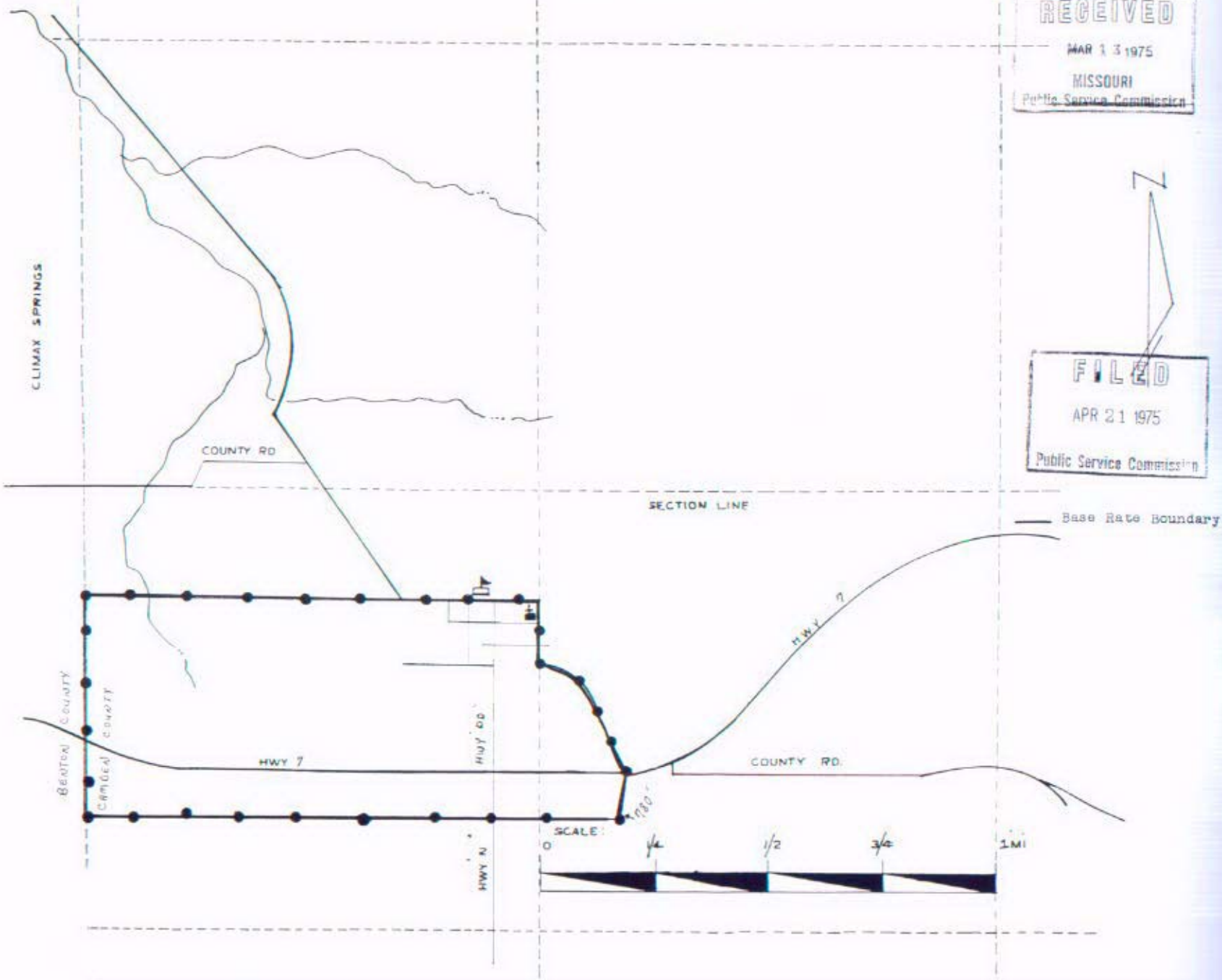
NO SUPPLEMENT TO THIS TARIFF WILL BE ISSUED EXCEPT FOR THE PURPOSE OF CANCELING THIS TARIFF.

P. S. C. Mo. No. 17
BASE RATE AREA MAP

Climax Springs, Missouri
1st REVISED SHEET 2
REPLACING ORIGINAL SHEET 2

RECEIVED
MAR 13 1975
MISSOURI
Public Service Commission

FILED
APR 21 1975
Public Service Commission



Issued: March 21, 1975

By R. N. SHOCKLEY, Vice President, Missouri-Illinois
Southwestern Bell Telephone Company
St. Louis, Missouri

Effective: April 21, 1975

SBC PSC MO #17
Climax Springs, Missouri
Climax Springs North Island Bra
Original Sheet 2A

Non-Scannable Map

(Is viewable in the Data Center
200 Madison Street, 1st Floor
Jefferson City MO)

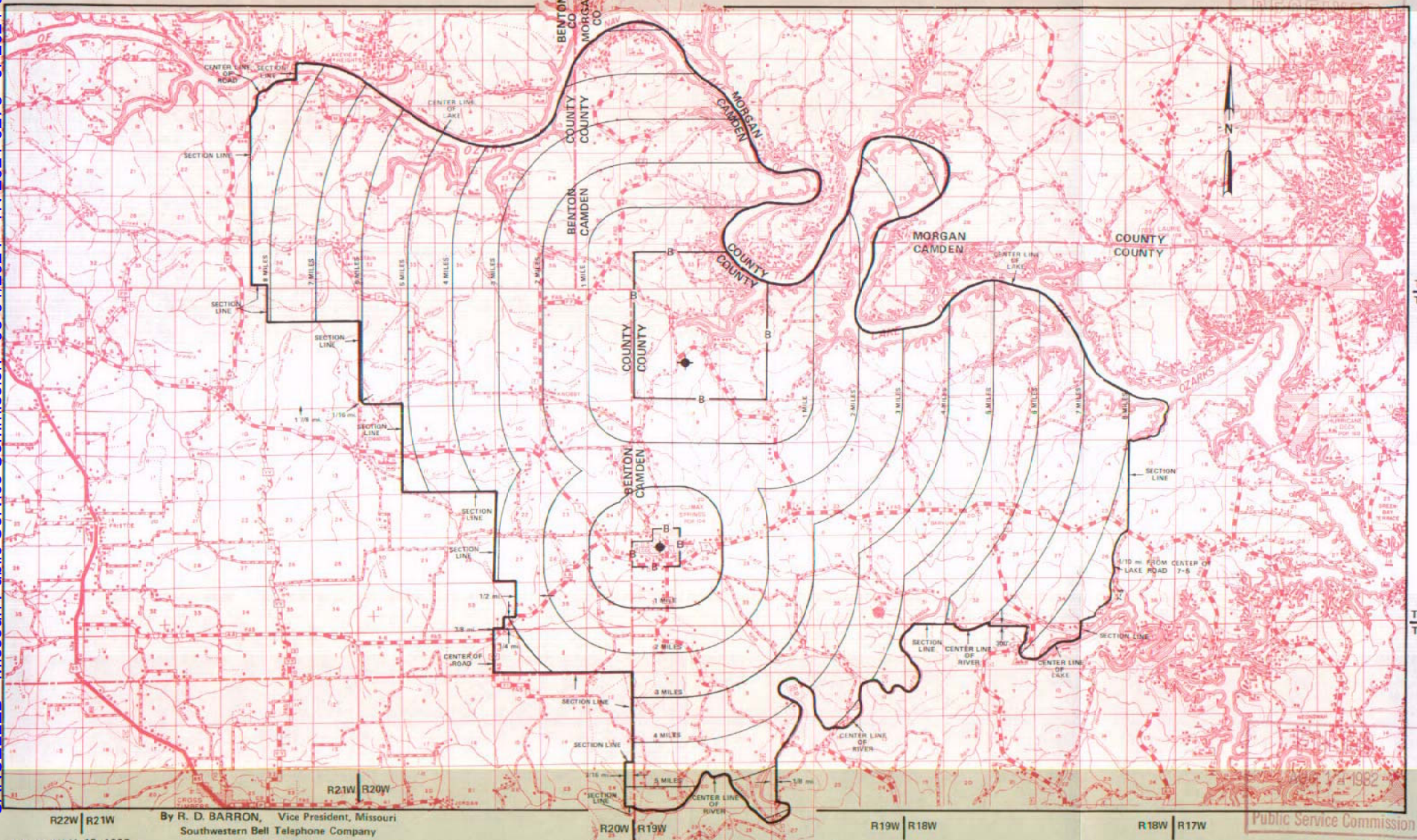
NO SUPPLEMENT TO THIS TARIFF WILL BE ISSUED EXCEPT FOR THE PURPOSE OF CANCELING THIS TARIFF.

P. S. C. Mo. No. 17 EXCHANGE AREA MAP

Climax Springs, Missouri

11th REVISED SHEET 3
REPLACING 10th REVISED SHEET 3

CANCELLED - Missouri Public Service Commission - 05-01/2024 - TN-2024-0278 - JI-2024-0142



T40N
T39N

T39N
T38N

R22W | R21W | R20W
By R. D. BARRON, Vice President, Missouri
Southwestern Bell Telephone Company
St. Louis, Missouri

Issued: JULY 12, 1982

R19W | R18W | R17W

Public Service Commission
1982

Effective: AUGUST 12, 1982

CANCELLED - Missouri Public Service Commission - 05/01/2024 - TN-2024-0278 - JI-2024-0142

CREVE COEUR

See

St. Louis District Exchange Rates

under

"St. LOUIS"

(June 1, 1937)