

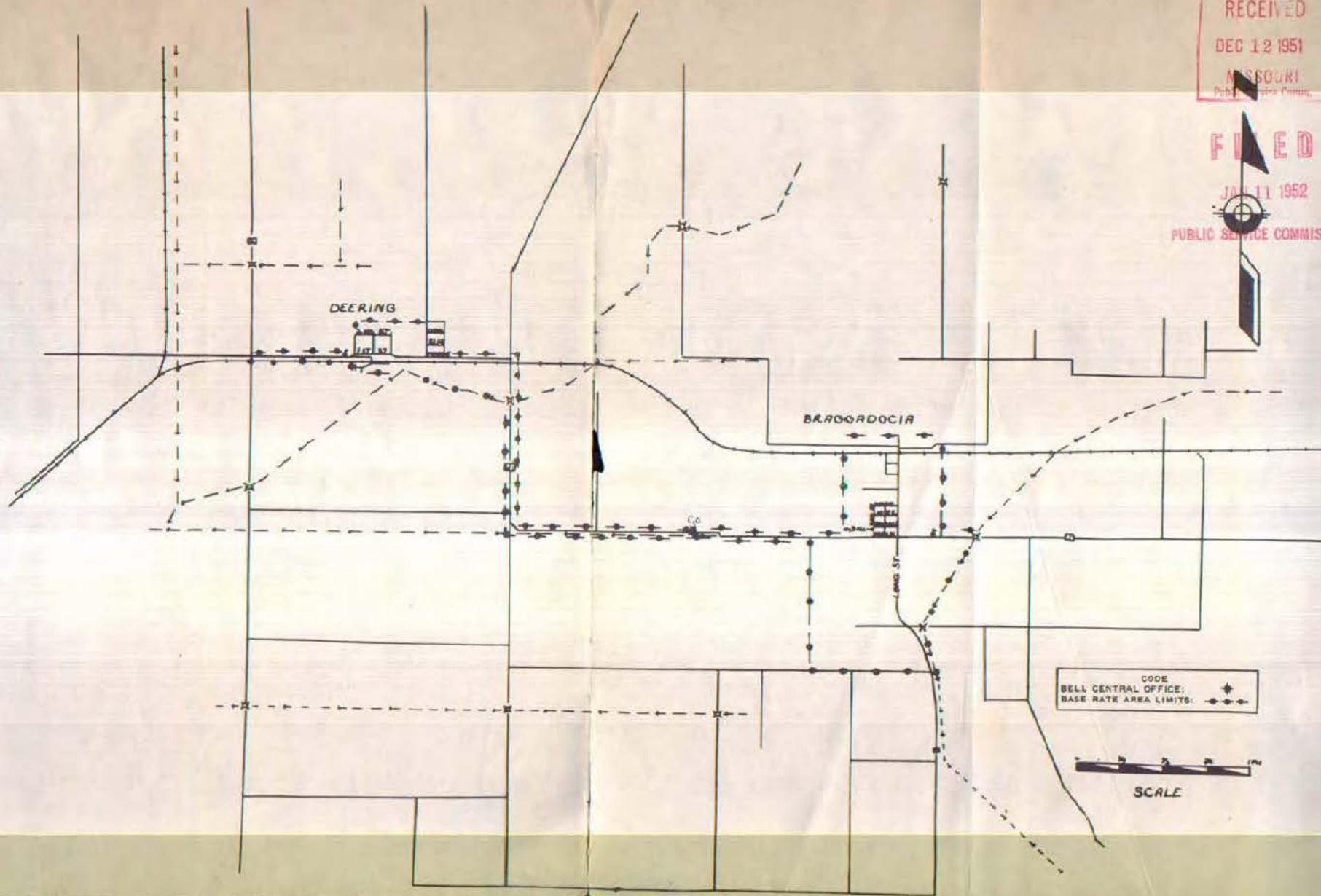
BE ISSUED EXCEPT FOR THE PURPOSE OF
CANCELING THIS TARIFF.

P. S. C. Mo. No. 17
BASE RATE AREA MAP

Deering, Missouri
ORIGINAL SHEET 2

RECEIVED
DEC 12 1951
MISSOURI
Public Service Comm.

FILED
JAN 11 1952
PUBLIC SERVICE COMMISSION



DEERING, MO
CANCELLED - Missouri Public Service Commission - 05/01/2024 - TN-2024-0278 - JI-2024-0142

Issued: December 11, 1951

By H. F. TOWLES, General Manager
Southwestern Bell Telephone Company
St. Louis, Missouri

Effective: January 14, 1952

NO SUPPLEMENT TO THIS TARIFF WILL BE ISSUED EXCEPT FOR THE PURPOSE OF CANCELING THIS TARIFF.

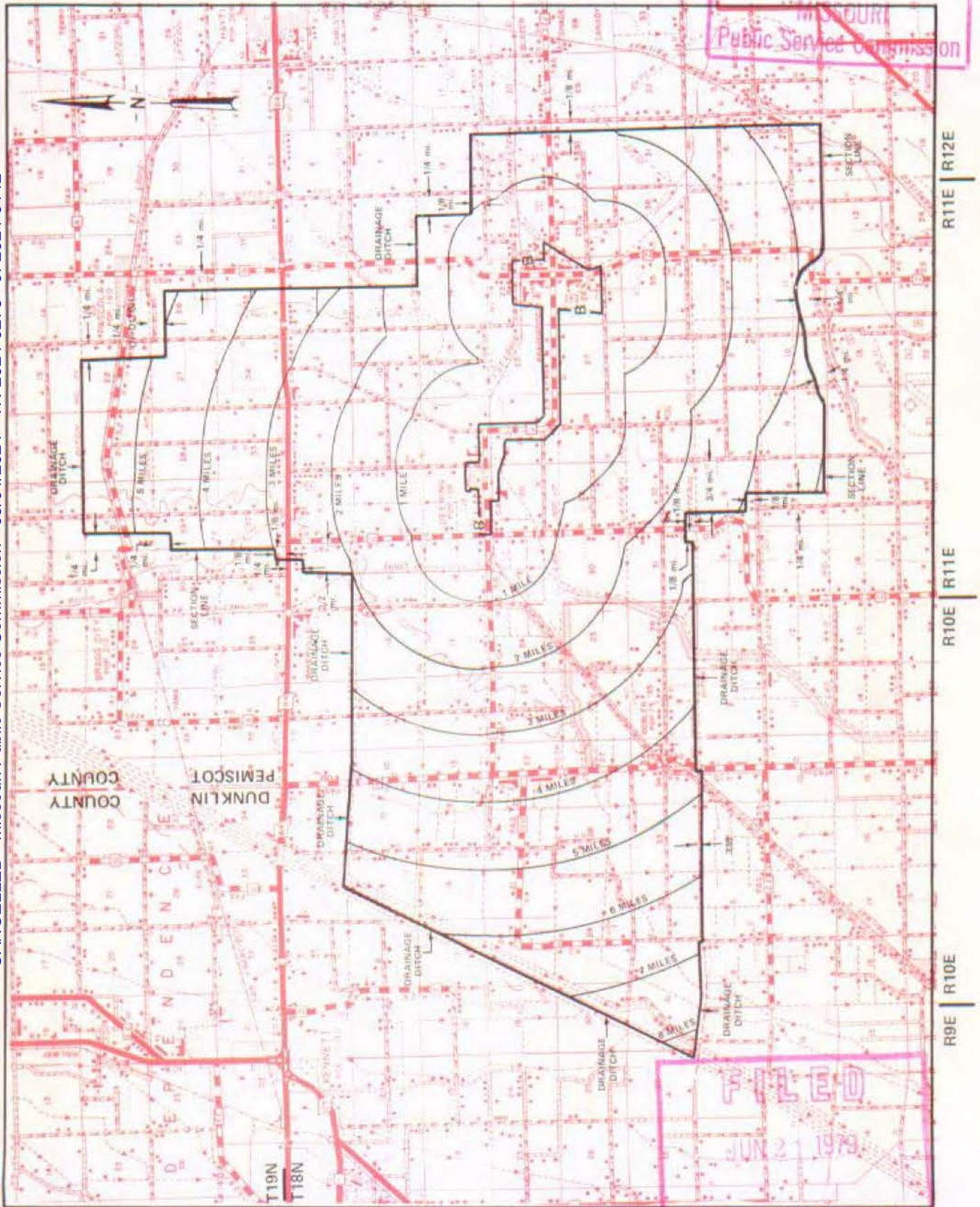
P. S. C. Mo. No. 17 EXCHANGE AREA MAP

REPLACING 5th REVISED SHEET 3
4th REVISED SHEET 3

MAY 11 1979

RECEIVED
Deering, Missouri
MISSOURI
Public Service Commission

CANCELLED - Missouri Public Service Commission - 05/01/2024 - TN-2024-0278 - JI-2024-0142



FILED
JUN 21 1979
Missouri Public Service Commission

By R. R. SHOCKLEY, Vice President, Missouri
Southwestern Bell Telephone Company
St. Louis, Missouri

Issued: May 21, 1979

Effective: June 21, 1979

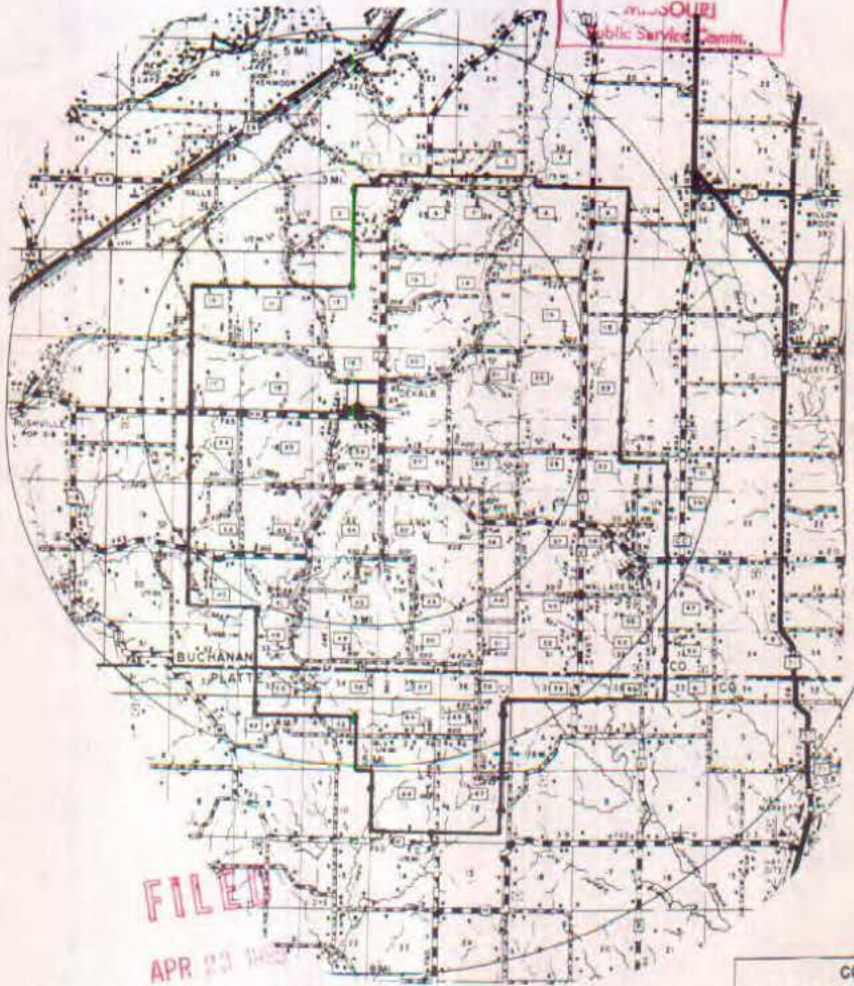
SBC PSC MO #17
De Kalb, Missouri
Original Sheet 2

Non-Scannable Map

(Is viewable in the Data Center
200 Madison Street, 1st Floor
Jefferson City MO)

P. S. C. Mo. No. 17
EXCHANGE AREA MAP

RECEIVED
MAR 16 1965
MISSOURI
Public Service Comm.



FILED
APR 23 1965
PUBLIC SERVICE COMMISSION

CODE

	EXCHANGE BOUNDARY
	RATE AREA
	Central Office

De Kalb, Mo.

CANCELLED - Missouri Public Service Commission - 05/01/2024 - TN-2024-0278 - JI-2024-0142

Issued: March 23, 1965

Effective: April 23, 1965

By R. R. SHOCKLEY, Vice President and General Manager
Southwestern Bell Telephone Company
St. Louis, Missouri

BE KEPT FOR THE PURPOSE OF
CANCELING THIS TARIFF.

P. S. C. Mo. No. 17
BASE RATE AREA MAP

ORIGINAL SHEET 2
REPLACING SOUTHEAST MISSOURI
TELEPHONE COMPANY P. S. C. Mo. No. 2
1st REVISED SHEET 2

CANCELLED - Missouri Public Service Commission - 05/01/2024 - TN-2024-0278 - JI-2024-0142

DELTA, MO.



RECEIVED
DEC 7 1955
MISSOURI
Public Service Comm.



FILED
JAN 8 1956
PUBLIC SERVICE COMMISSION



CODE
BELL CENTRAL OFFICE: ◆
BASE RATE AREA LIMITS: ◆◆◆

Issued: December 8, 1955

By J. R. PETERSON, General Manager
Southwestern Bell Telephone Company
St. Louis, Missouri

Effective: January 8, 1956

NO SUPPLEMENT TO THIS TARIFF WILL BE ISSUED EXCEPT FOR THE PURPOSE OF CANCELING THIS TARIFF.

9th REVISED SHEET 3
REPLACING 8th REVISED SHEET 3

P. S. C. Mo. No. 17 EXCHANGE AREA MAP

JAN 24 1990

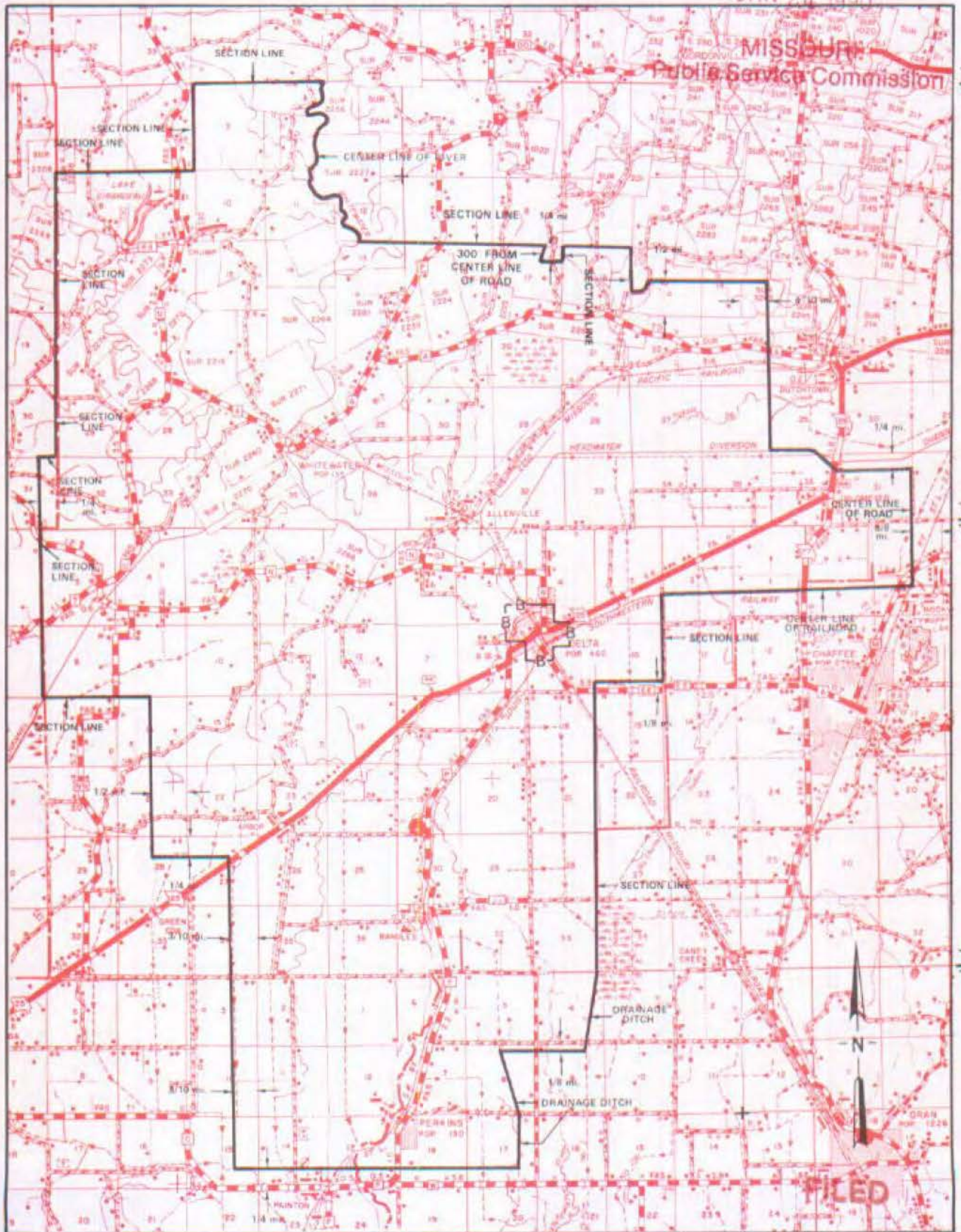
MISSOURI
Public Service Commission

T31N
T30N

T30N
T29N

T29N
T28N

CANCELLED - Missouri Public Service Commission - 05/01/2024 - TN-2024-0278 - JI-2024-0142



R1E | R2E

R2E | R3E

MAR 1 1990

By R. D. BARRON, PRESIDENT, MISSOURI DIVISION
Southwestern Bell Telephone Company
St. Louis, Missouri
Public Service Commission
Effective: March 1, 1990

Issued: January 29, 1990

NO SUPPLEMENT TO THIS TARIFF WILL BE ISSUED EXCEPT FOR THE PURPOSE OF CANCELING THIS TARIFF.

P. S. C. Mo. No. 17
BASE RATE AREA MAP

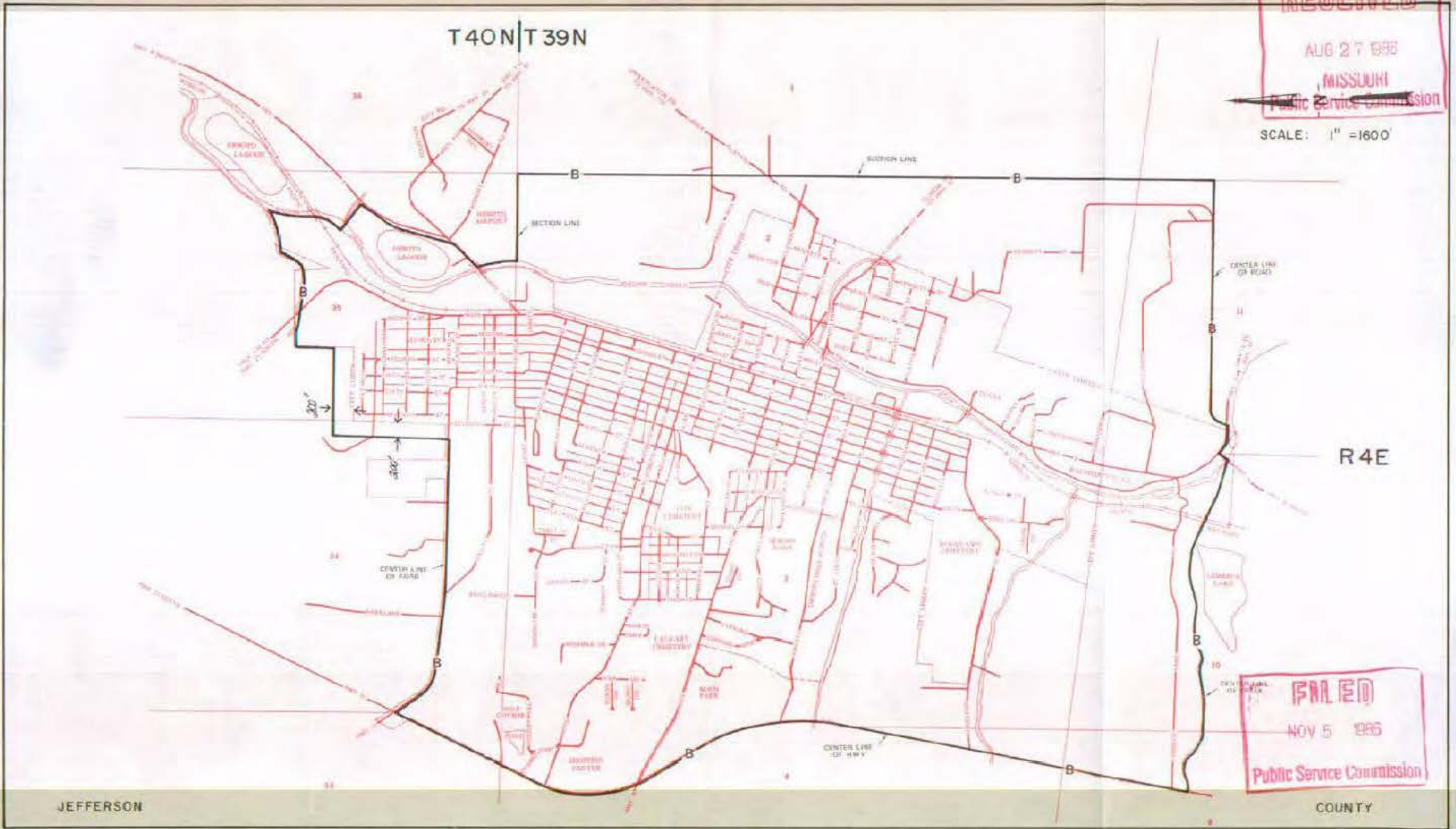
DeSoto, Missouri

2nd REVISED SHEET 2
REPLACING 1st REVISED SHEET 2

RECEIVED
AUG 27 1985
MISSOURI
Public Service Commission

SCALE: 1" = 1600'

T 40 N | T 39 N



R 4 E

FILED
NOV 5 1985
Public Service Commission

JEFFERSON

COUNTY

CANCELLED - Missouri Public Service Commission - 05/01/2024 - TN-2024-0278 - JI-2024-0142

By R. D. BARRON, PRESIDENT—MISSOURI DIVISION
Southwestern Bell Telephone Company
St. Louis, Missouri

Issued: AUG 29 1985

Effective: NOV 5 1985

CANCELLED - Missouri Public Service Commission - 05/01/2024 - TN-2024-0278 - TN-2024-0142

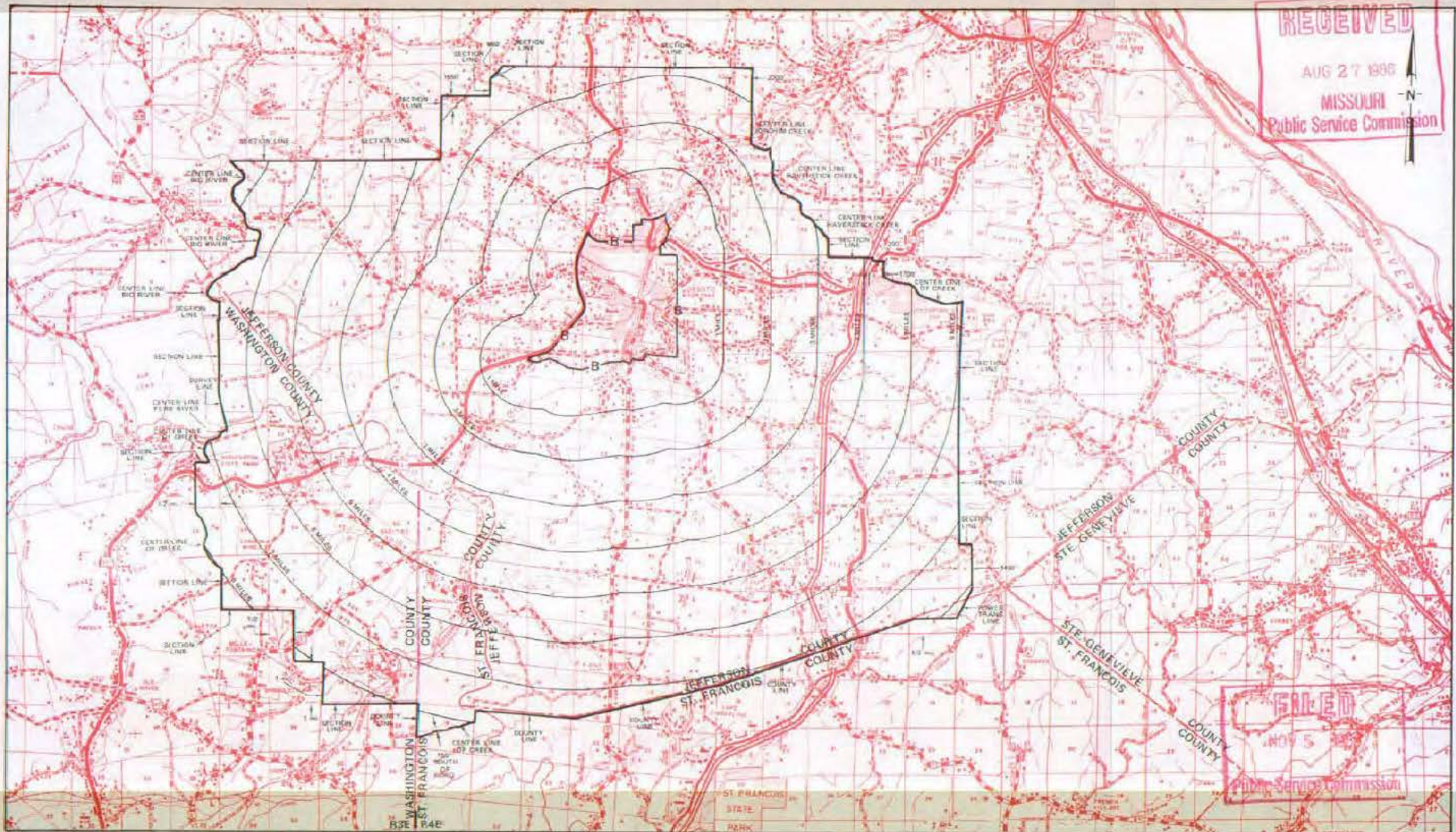
NO SUPPLEMENT TO THIS TARIFF WILL BE ISSUED EXCEPT FOR THE PURPOSE OF CANCELING THIS TARIFF.

P. S. C. Mo. No. 17
EXCHANGE AREA MAP

DeSoto, Missouri

8th REV/SED SHEET 3
REPLACING 7th REV/SED SHEET 3

RECEIVED
AUG 27 1986
MISSOURI
Public Service Commission



T40N
T39N

T39N
T38N

R2E | R3E

By R. D. BARRON, PRESIDENT - MISSOURI DIVISION
Southwestern Bell Telephone Company
St. Louis, Missouri

R4E | R5E

R5E | R6E

R6E | R7E

Issued: AUG 29 1986

Effective NOV 5 1986

RECEIVED
NOV 5 1986
MISSOURI
Public Service Commission

SBC PSC MO #17
Dexter, Missouri
2nd Revised Sheet 2
Replacing 1st Revised Sheet 2

Non-Scannable Map

(Is viewable in the Data Center
200 Madison Street, 1st Floor
Jefferson City MO)

NO SUPPLEMENT TO THIS TARIFF WILL BE ISSUED EXCEPT FOR THE PURPOSE OF CANCELING THIS TARIFF.

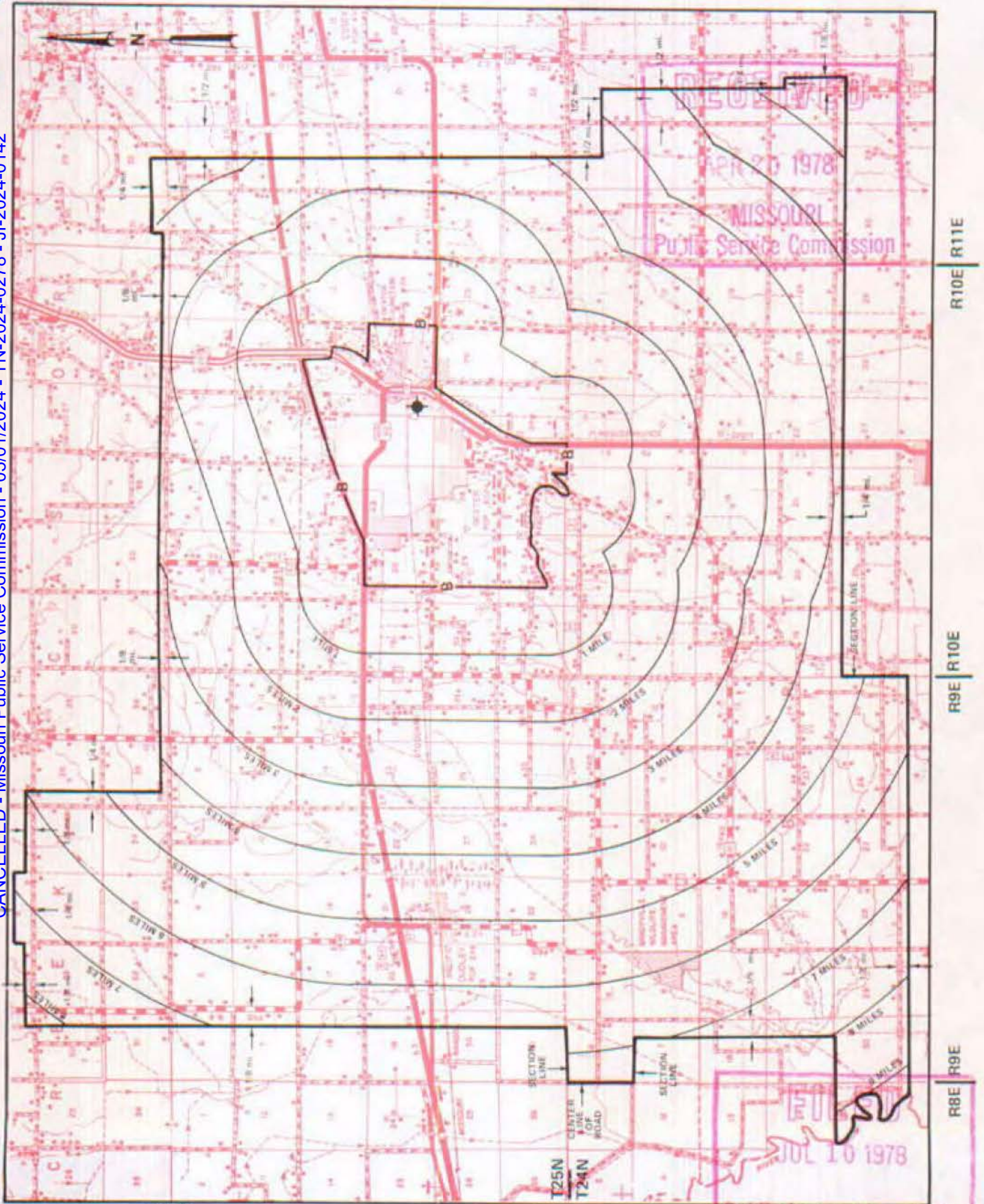
P. S. C. Mo. No. 17

Dexter, Missouri

EXCHANGE AREA MAP

REPLACING 7th REVISED SHEET 3
6th REVISED SHEET 3

CANCELLED - Missouri Public Service Commission - 05/01/2024 - TN-2024-0278 - JI-2024-0142



By R. R. SHOCKLEY, Vice President, Missouri Southwestern Bell Telephone Company

JUL 10 1978

SBC PSC MO #17
Downing, Missouri
Original Sheet 2
Schuyler County

Non-Scannable Map

(Is viewable in the Data Center
200 Madison Street, 1st Floor
Jefferson City MO)

NO SUPPLEMENT TO THIS TARIFF WILL BE ISSUED EXCEPT FOR THE PURPOSE OF CANCELING THIS TARIFF.

P. S. C. Mo. No. 17

Downing, Missouri

EXCHANGE AREA MAP

6th REVISED SHEET 3 REPLACING 5th REVISED SHEET 3

CANCELLED - Missouri Public Service Commission - 05/01/2024 - TN-2024-0278 - JI-2024-0142

RECEIVED

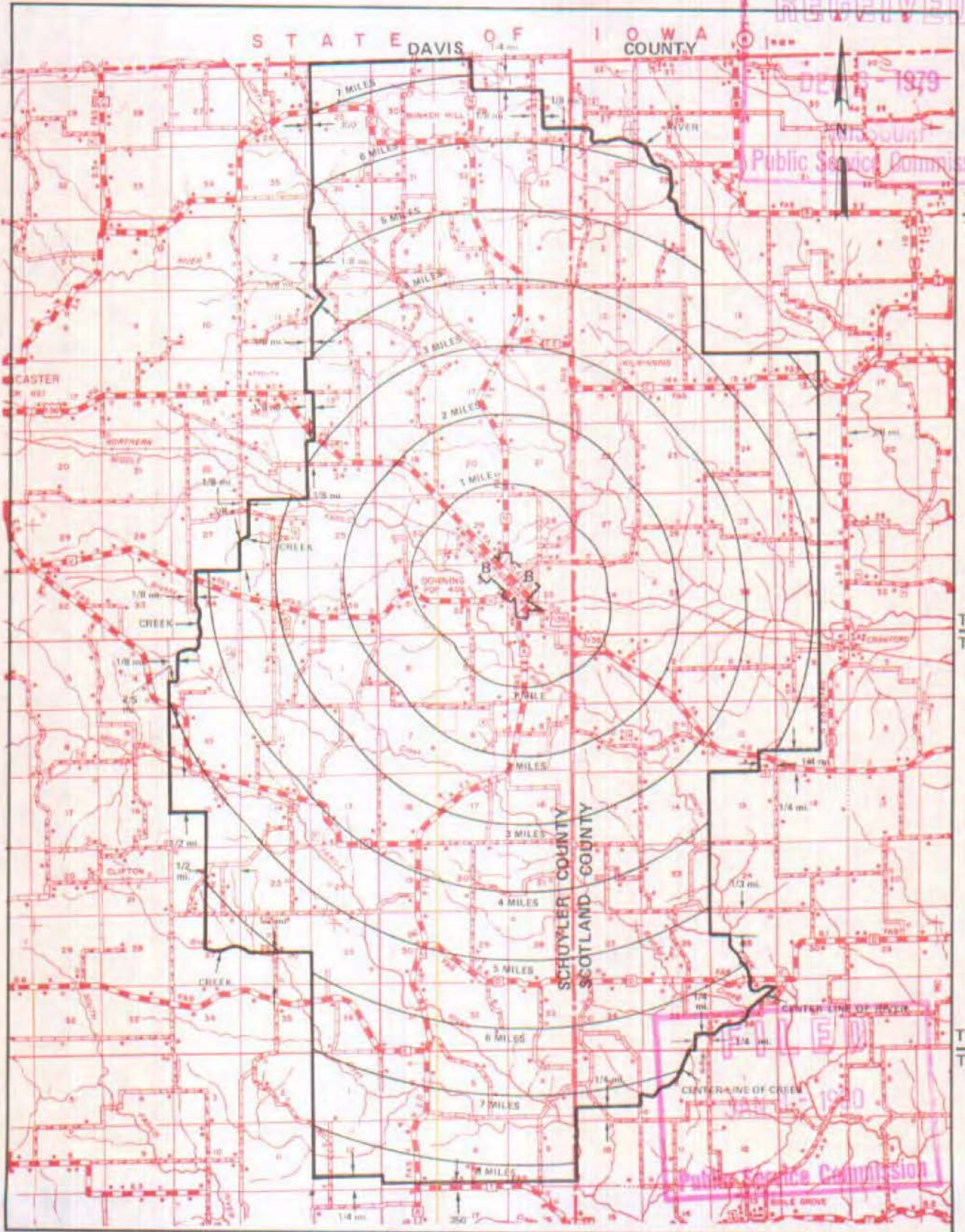
DEC 7 1979

Missouri Public Service Commission

T67N
T66N

T66N
T65N

T65N
T64N



R14W | R13W

R13W | R12W

By R. R. SHOCKLEY, Vice President, Missouri Southwestern Bell Telephone Company

JAN 3 1980