

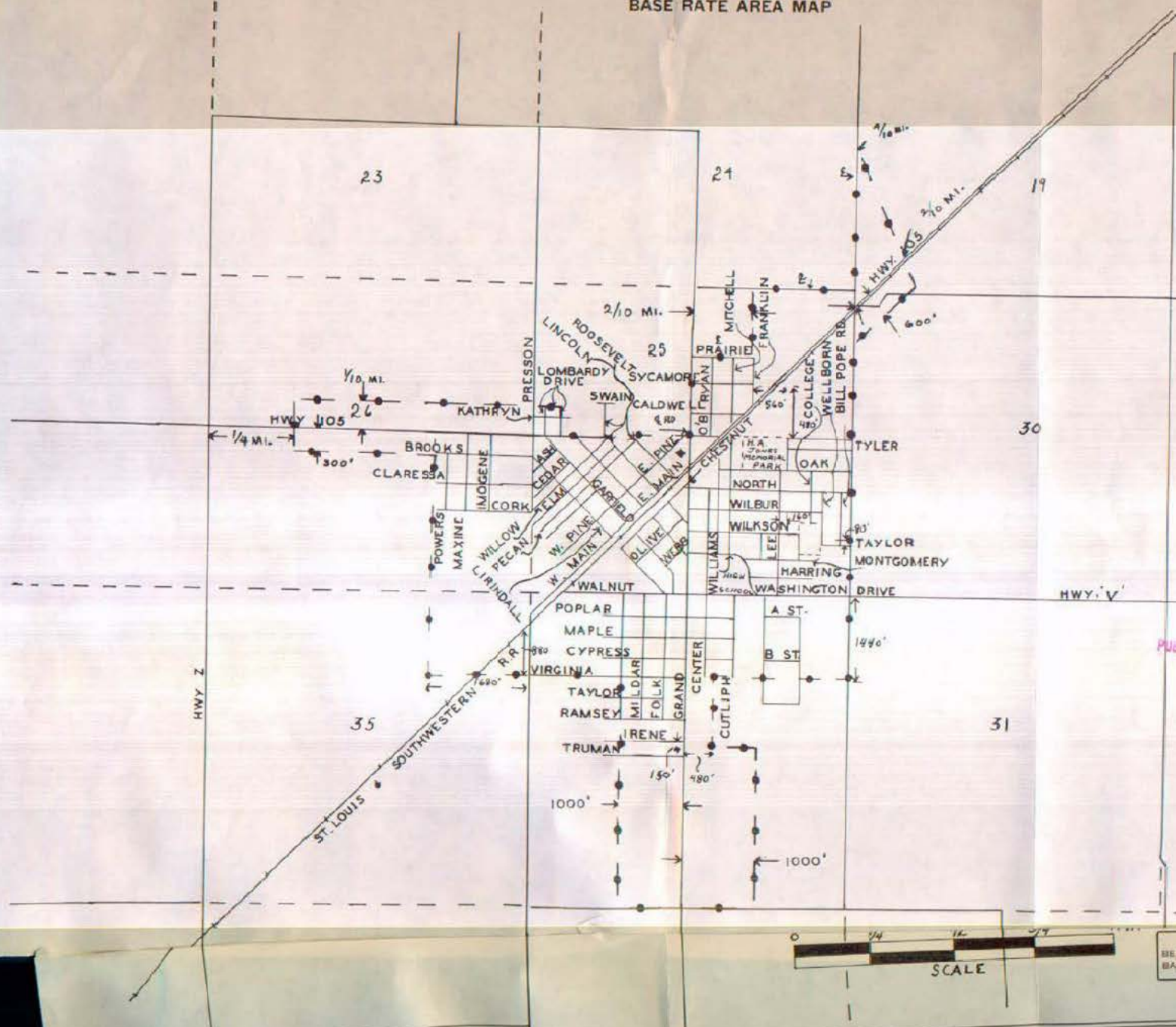
CANCELLED - Missouri Public Service Commission - 05/01/2024 - TN-2024-0278 - JI-2024-0142

EAST PRAIRIE, MO.

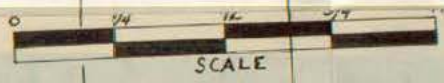
P. S. C. MO. No. 17
BASE RATE AREA MAP

REPLACING ORIGINAL SHEET 2

RECEIVED
JAN 2 - 1962
MISSOURI
Public Service Comm.



FEB 1 1962
PUBLIC SERVICE COMMISSION



CODE
BELL CENTRAL OFFICE: ◆
BASE RATE AREA LIMITS: - - - - -

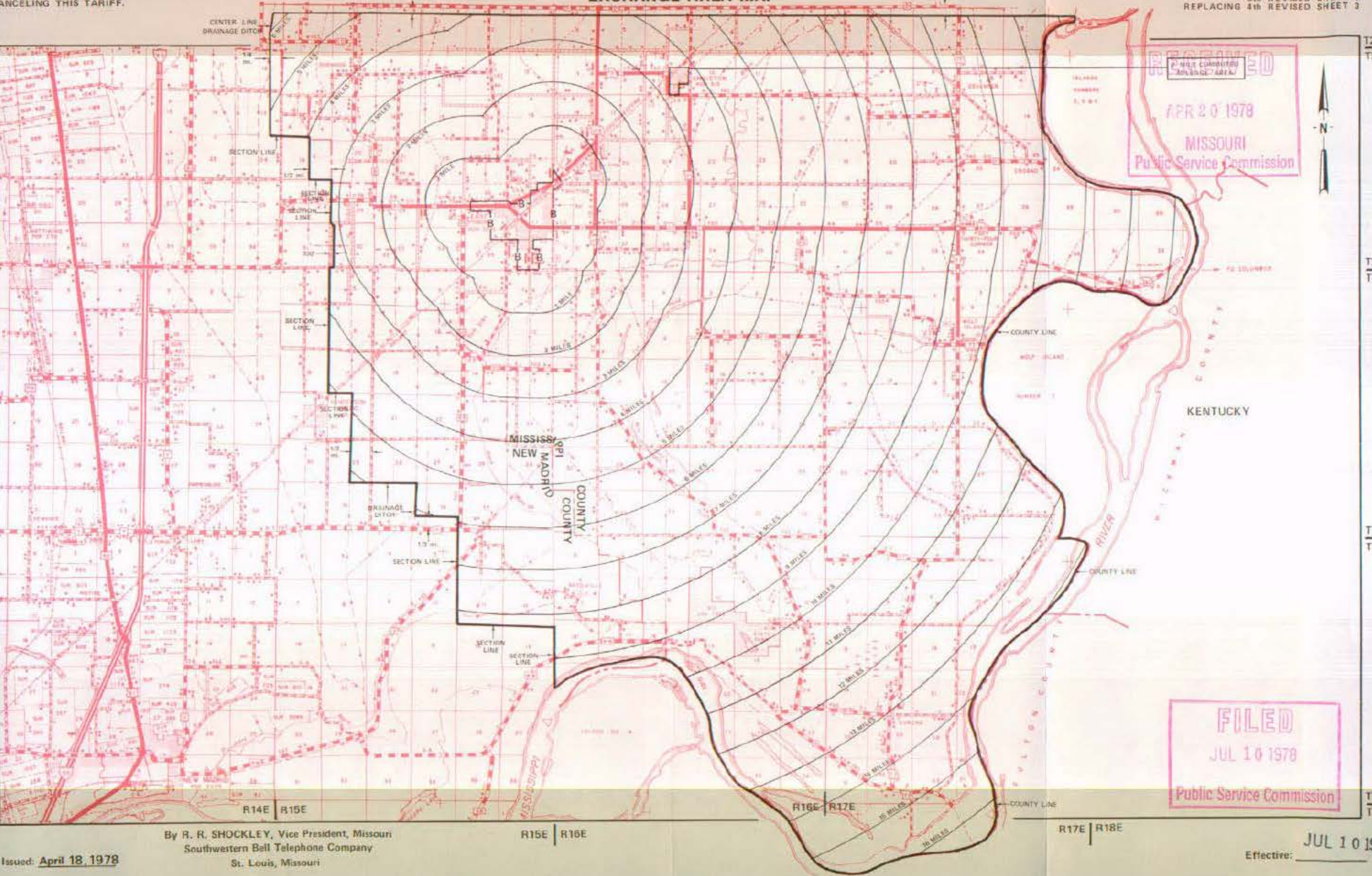
Effective: February 4, 1962

NO SUPPLEMENT TO THIS TARIFF WILL BE ISSUED EXCEPT FOR THE PURPOSE OF CANCELING THIS TARIFF.

P. S. C. Mo. No. 17
EXCHANGE AREA MAP

East Prairie, Missouri
5th REVISED SHEET 3
REPLACING 4th REVISED SHEET 3

CANCELLED - Missouri Public Service Commission - 05/01/2024 - TN-2024-0278 - JI-2024-0142



RECEIVED
APR 20 1978
MISSOURI
Public Service Commission



FILED
JUL 10 1978
Public Service Commission

By R. R. SHOCKLEY, Vice President, Missouri
Southwestern Bell Telephone Company
St. Louis, Missouri

R15E | R16E

R17E | R18E

Issued: April 18, 1978

Effective: JUL 10 1978

T26N
T25N

T25N
T24N

T24N
T23N

T23N
T22N

SBC PSC MO #17
Edina, Missouri
1st Revised Sheet 2
Replacing Original Sheet 2

Non-Scannable Map

(Is viewable in the Data Center
200 Madison Street, 1st Floor
Jefferson City MO)

NO SUPPLEMENT TO THIS TARIFF WILL BE ISSUED EXCEPT FOR THE PURPOSE OF CANCELING THIS TARIFF.

P. S. C. Mo. No. 17

Edina, Missouri

EXCHANGE AREA MAP

7th REVISED SHEET 3 REPLACING 6th REVISED SHEET 3

RECEIVED

APR 20 1978

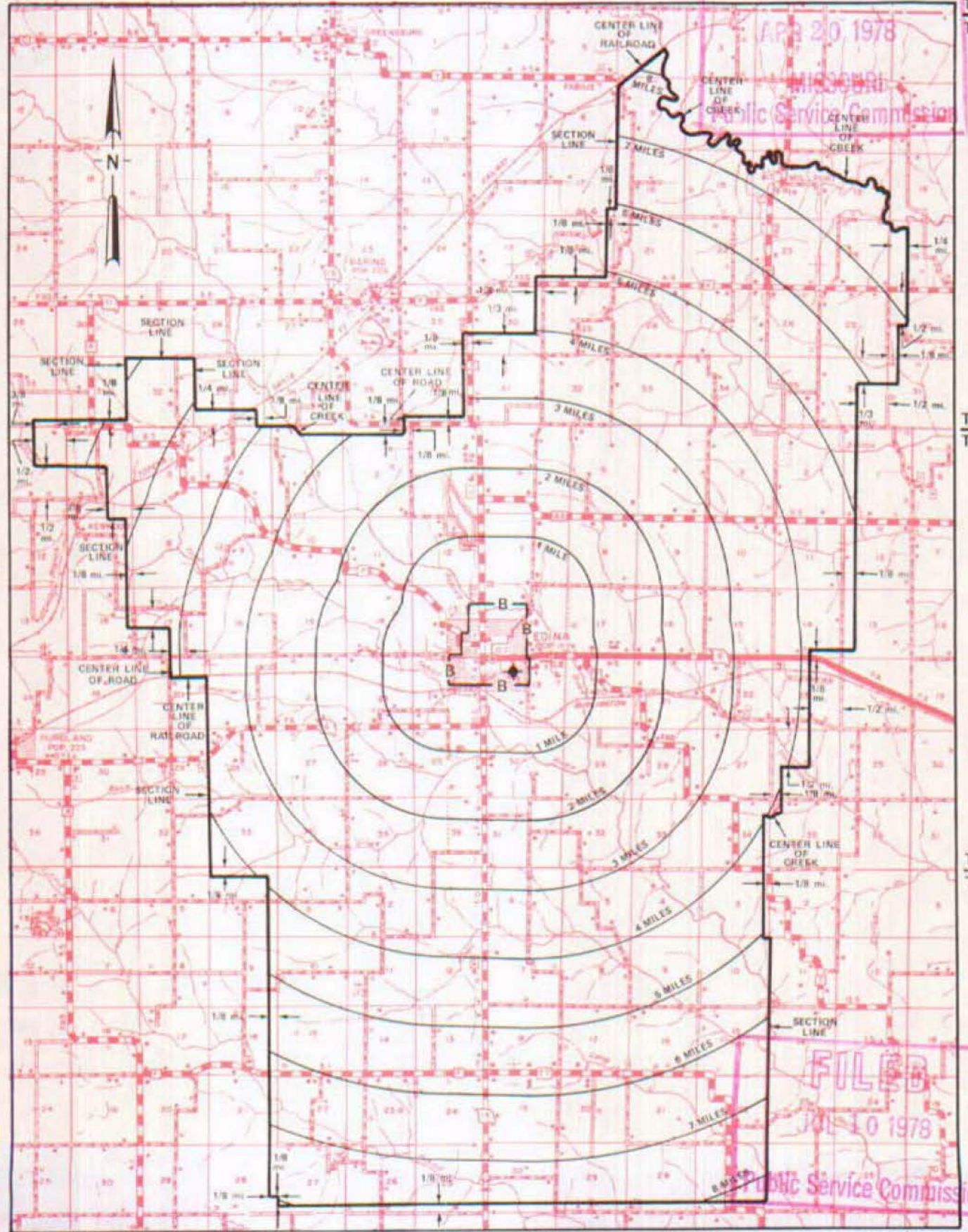
MISSOURI Public Service Commission

T64N
T63N

T63N
T62N

T62N
T61N

R11W
R10W



CANCELLED - Missouri Public Service Commission - 05/01/2024 - TN-2024-0278 - JI-2024-0142

By R. R. SHOCKLEY, Vice President, Missouri Southwestern Bell Telephone Company

FILED

JUL 10 1978

MISSOURI Public Service Commission

JUL 10 1978

SBC PSC MO #17
Eldon, Missouri
1st Revised Sheet 2
Replacing Original Sheet 2

Non-Scannable Map

(Is viewable in the Data Center
200 Madison Street, 1st Floor
Jefferson City MO)

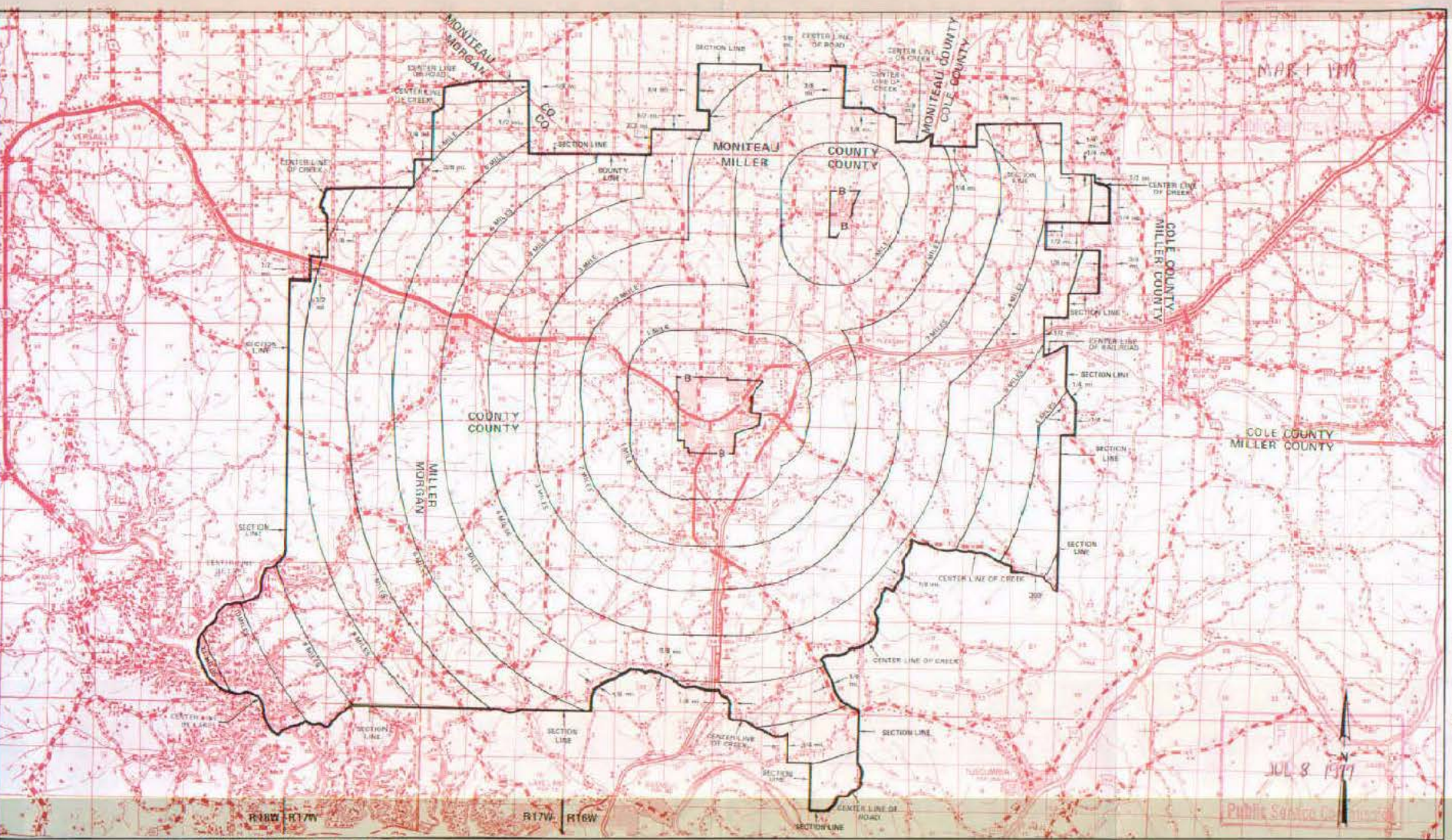
NO SUPPLEMENT TO THIS TARIFF WILL BE ISSUED EXCEPT FOR THE PURPOSE OF CANCELING THIS TARIFF.

P. S. C. Mo. No. 17 EXCHANGE AREA MAP

Eldon, Missouri

19th REVISED SHEET 3
REPLACING 18th REVISED SHEET 3

CANCELLED - Missouri Public Service Commission - 05/01/2024 - TN-2024-0278 - JI-2024-0142



By R. R. SHOCKLEY, Vice President, Missouri
Southwestern Bell Telephone Company
St. Louis, Missouri

Issued: March 1, 1977

Effective: 30 1977

JUL 8 1977

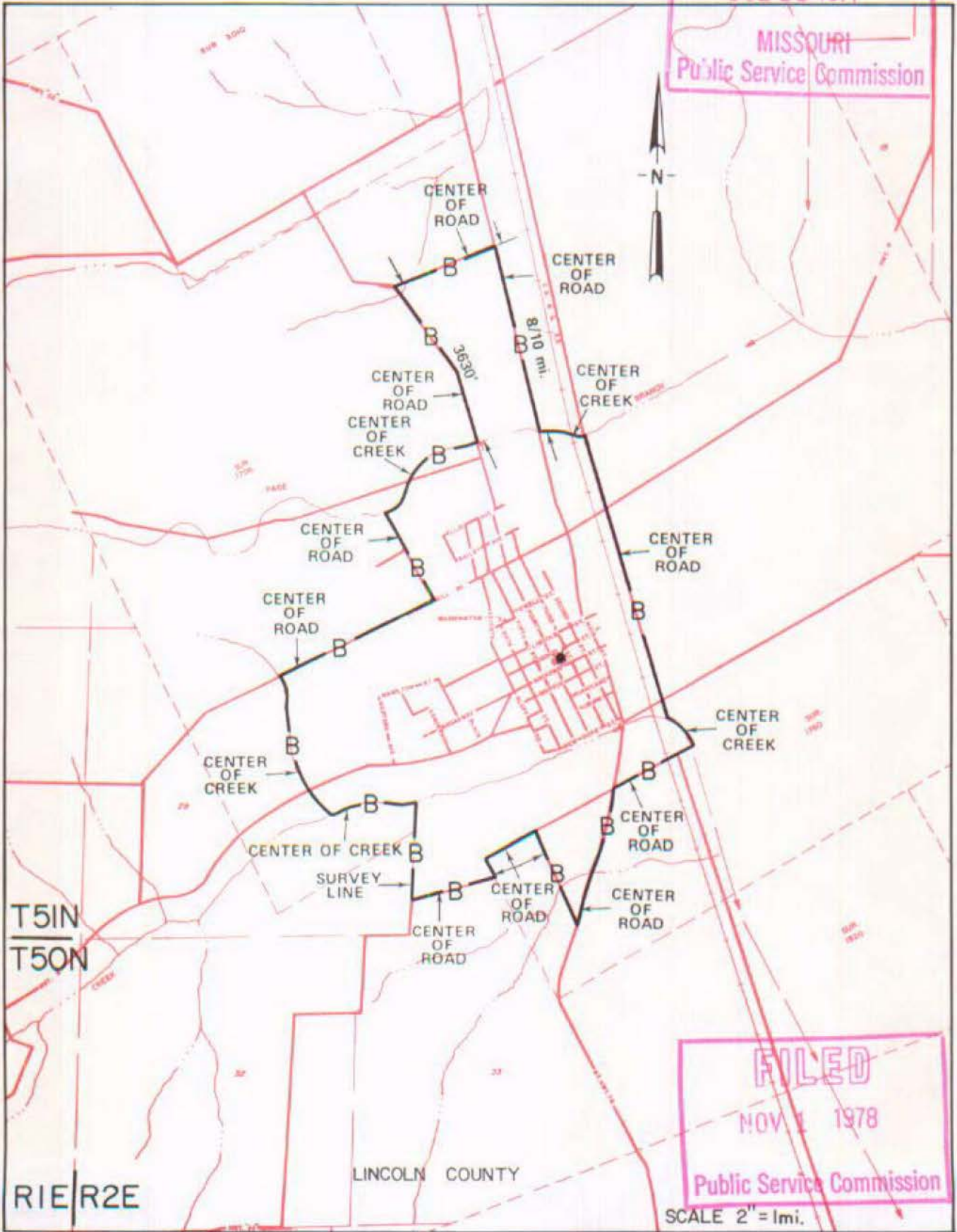
Public Service Commission

NO SUPPLEMENT TO THIS TARIFF WILL BE ISSUED EXCEPT FOR THE PURPOSE OF CANCELING THIS TARIFF.

P. S. C. Mo. No. 17

BASE RATE AREA MAP

Elsberry, Missouri
RECEIVED
 1st REVISED SHEET 2
 REPLACING ORIGINAL SHEET 2
 JUL 11 1977
 MISSOURI
 Public Service Commission



CANCELLED - Missouri Public Service Commission - 05/01/2024 - TN-2024-0278 - JI-2024-0142

FILED
 NOV 1 1978
 Public Service Commission

SCALE 2" = 1mi.

By R. R. SHOCKLEY, Vice President, Missouri
 Southwestern Bell Telephone Company
 St. Louis, Missouri

NOV 1 - 1978

Issued: July 11, 1977

Effective: _____

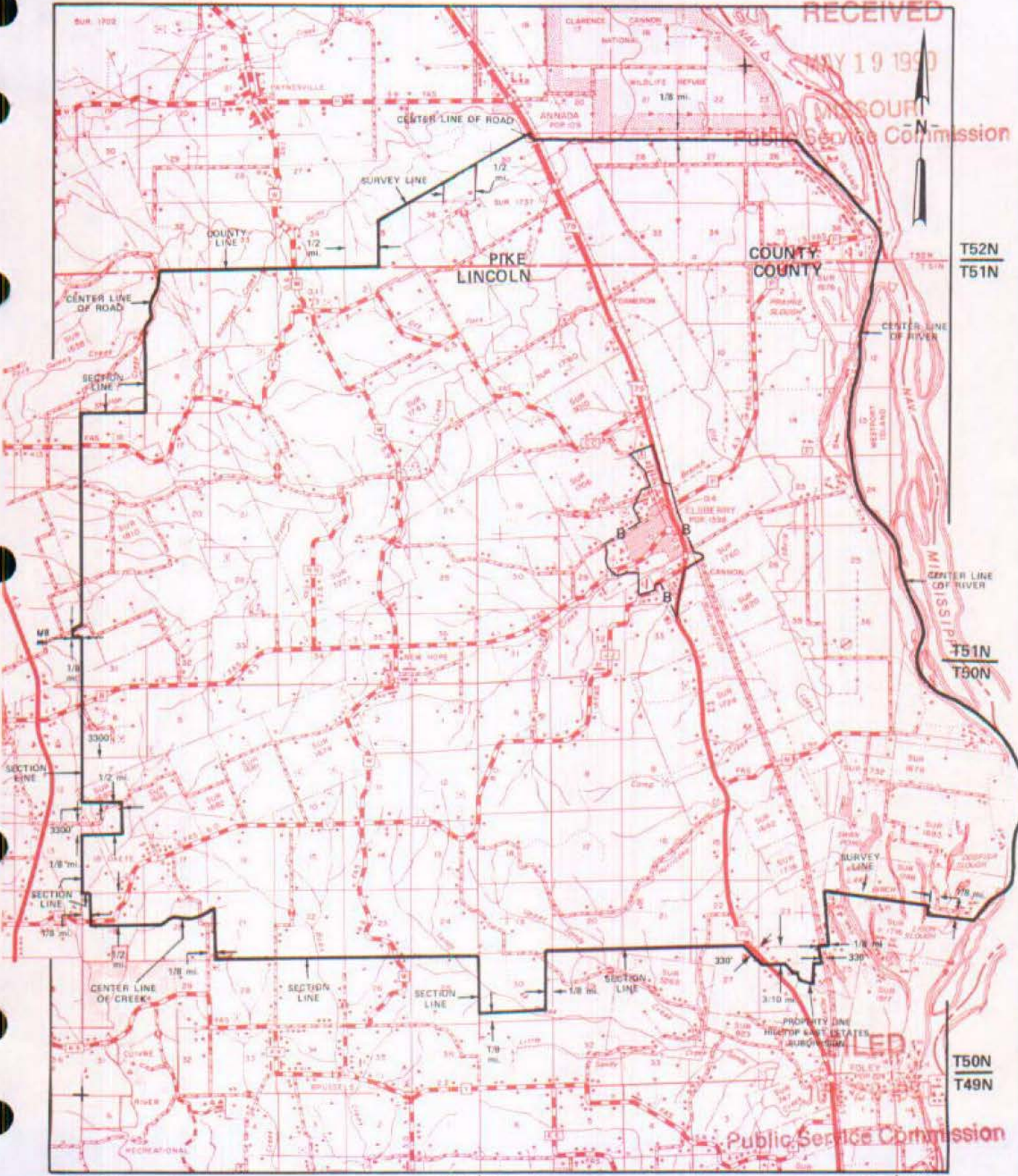
NO SUPPLEMENT TO THIS TARIFF WILL BE ISSUED EXCEPT FOR THE PURPOSE OF CANCELING THIS TARIFF.

P. S. C. Mo. No. 17 EXCHANGE AREA MAP

Elsberry, Missouri

12th REVISED SHEET 3
REPLACING 11th REVISED SHEET 3

CANCELLED - Missouri Public Service Commission - 05/01/2024 - TN-2024-0278 - JI-2024-0142



R1W | R1E | R1E | R2E | R2E | R3E

MAY 2 1 1990

By R. D. BARRON, PRESIDENT, MISSOURI DIVISION
Southwestern Bell Telephone Company
St. Louis, Missouri

Effective: JUN 2 2 1990

Issued:

No supplement to this tariff will be issued except for the purpose of canceling this tariff.

P. S. C. Mo.—No. 17

EOLIA, MISSOURI
FIFTH REVISED SHEET 1
(REPLACING FOURTH REVISED SHEET 1,
ORIGINAL SHEET 1-A
AND ORIGINAL SHEET 1-B)

SOUTHWESTERN BELL TELEPHONE COMPANY

**LOCAL EXCHANGE TARIFF
SUPERSEDING ALL TARIFFS PREVIOUSLY ISSUED**

RECEIVED
AUG 22 1940
MISSOURI
Public Service Comm.

This exchange was sold to Mr. J. R. Carter, effective May 25, 1939, and, therefore, all rates and rate practices formerly authorized for this exchange are withdrawn.

Eolia Tel. Exch.

CANCELLED - Missouri Public Service Commission - 05/01/2024 - TN-2024-0278 - JI-2024-0142

FILED

SEP 19 1940

Public Service Commission

Issued: August 21, 1940

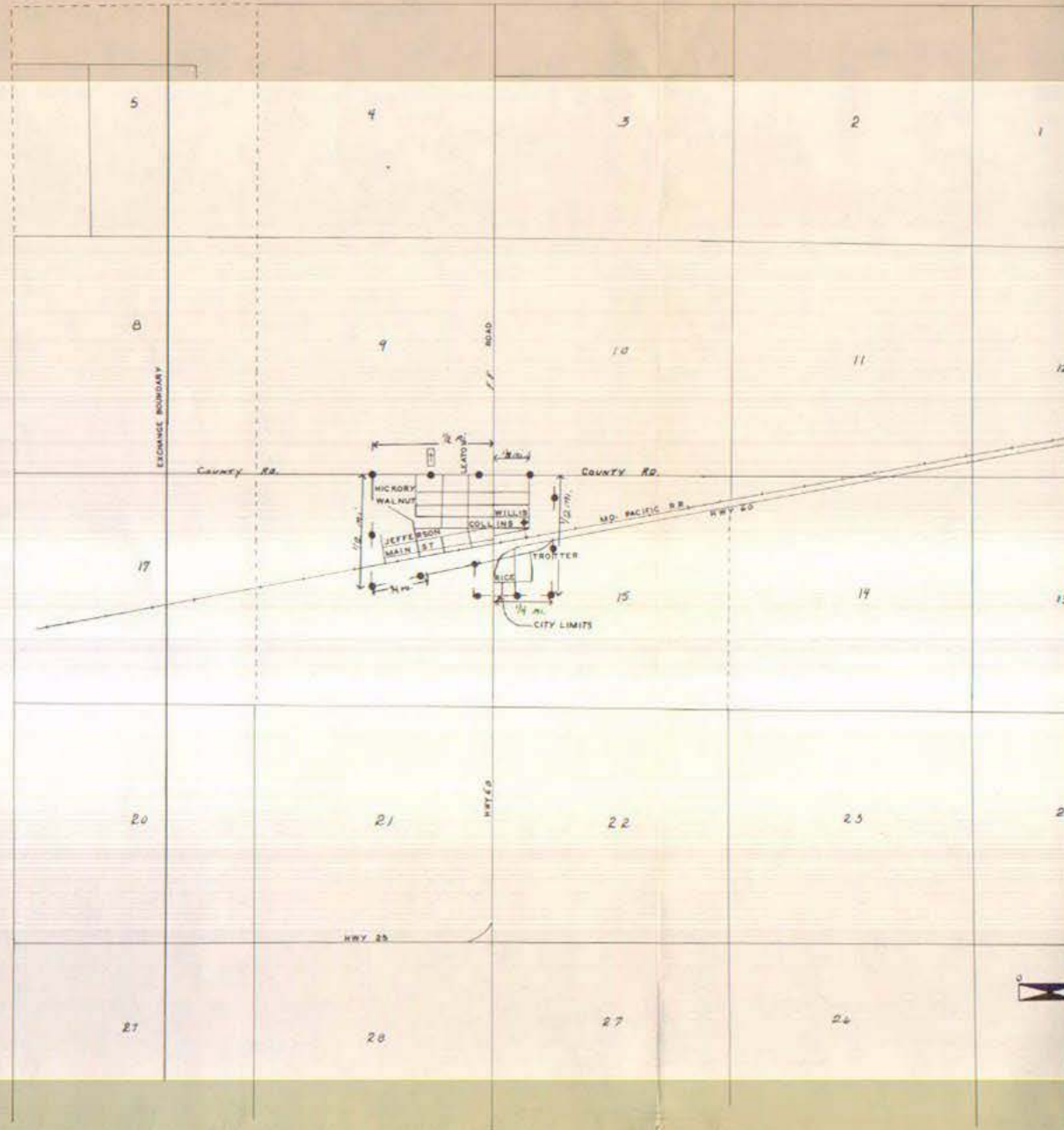
Effective: May 25, 1939

By S. R. SMITH, General Manager
St. Louis, Mo.

P. S. C. Mo. No. 17
BASE RATE AREA MAP

CANCELLED - Missouri Public Service Commission - 05/01/2024 - TN-2024-0278 - JI-2024-0142

ESSEX, MO.



RECEIVED
APR 4 1956
MISSOURI
Public Service Comm.

FILED

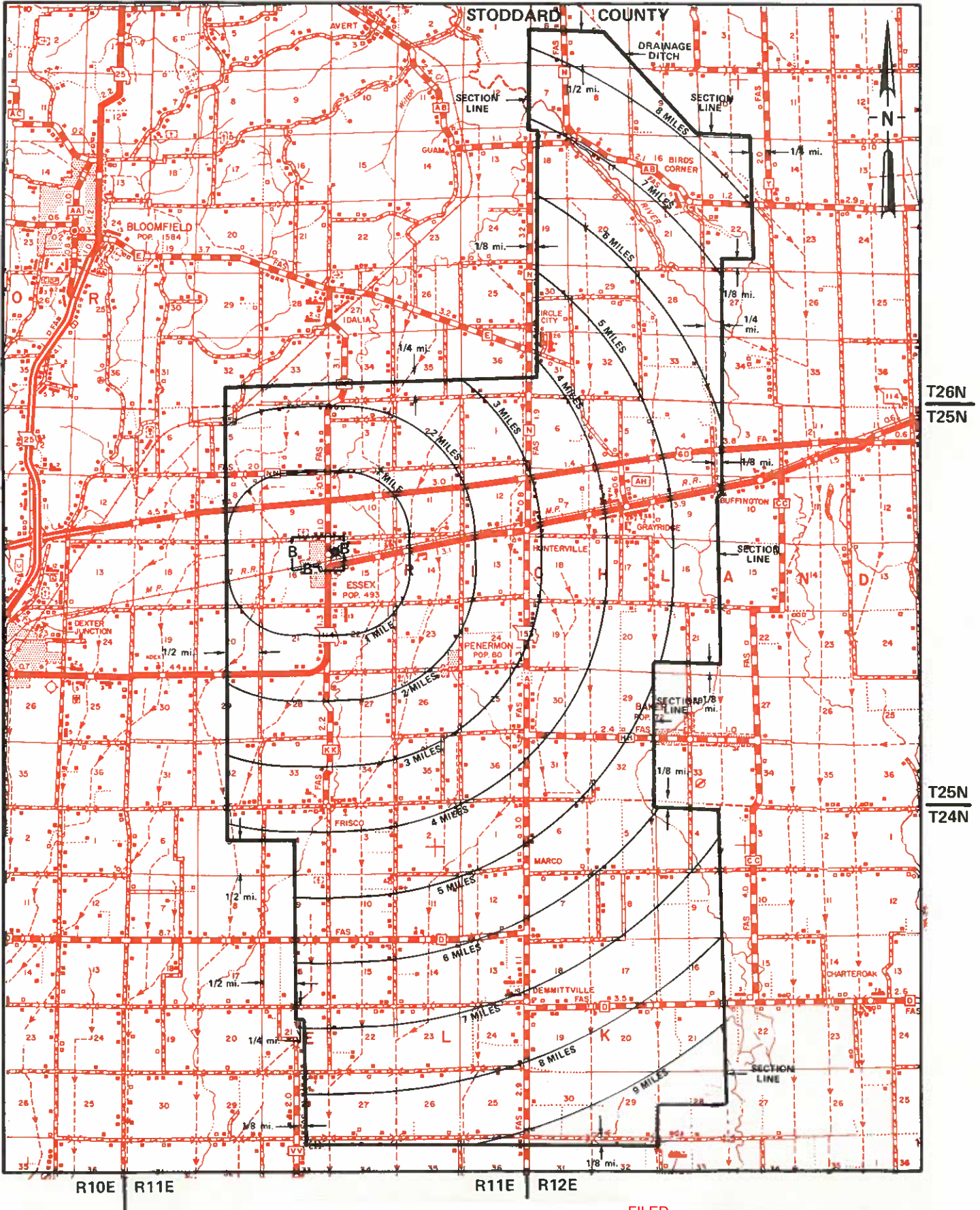
MAY 5 1956

PUBLIC SERVICE COMMISSION



CODE
BELL CENTRAL OFFICE:
BASE RATE AREA LIMITS:

CANCELLED - Missouri Public Service Commission - 05/01/2024 - TN-2024-0278 - JI-2024-0142



Issued: September 12, 2012

By JOHN SONDRAG, President - Missouri
St. Louis, Missouri

FILED
Missouri Public
Service Commission
JI-2013-0120

Effective: October 12, 2012

NO SUPPLEMENT TO THIS TARIFF WILL BE ISSUED EXCEPT FOR THE PURPOSE OF CANCELING THIS TARIFF.

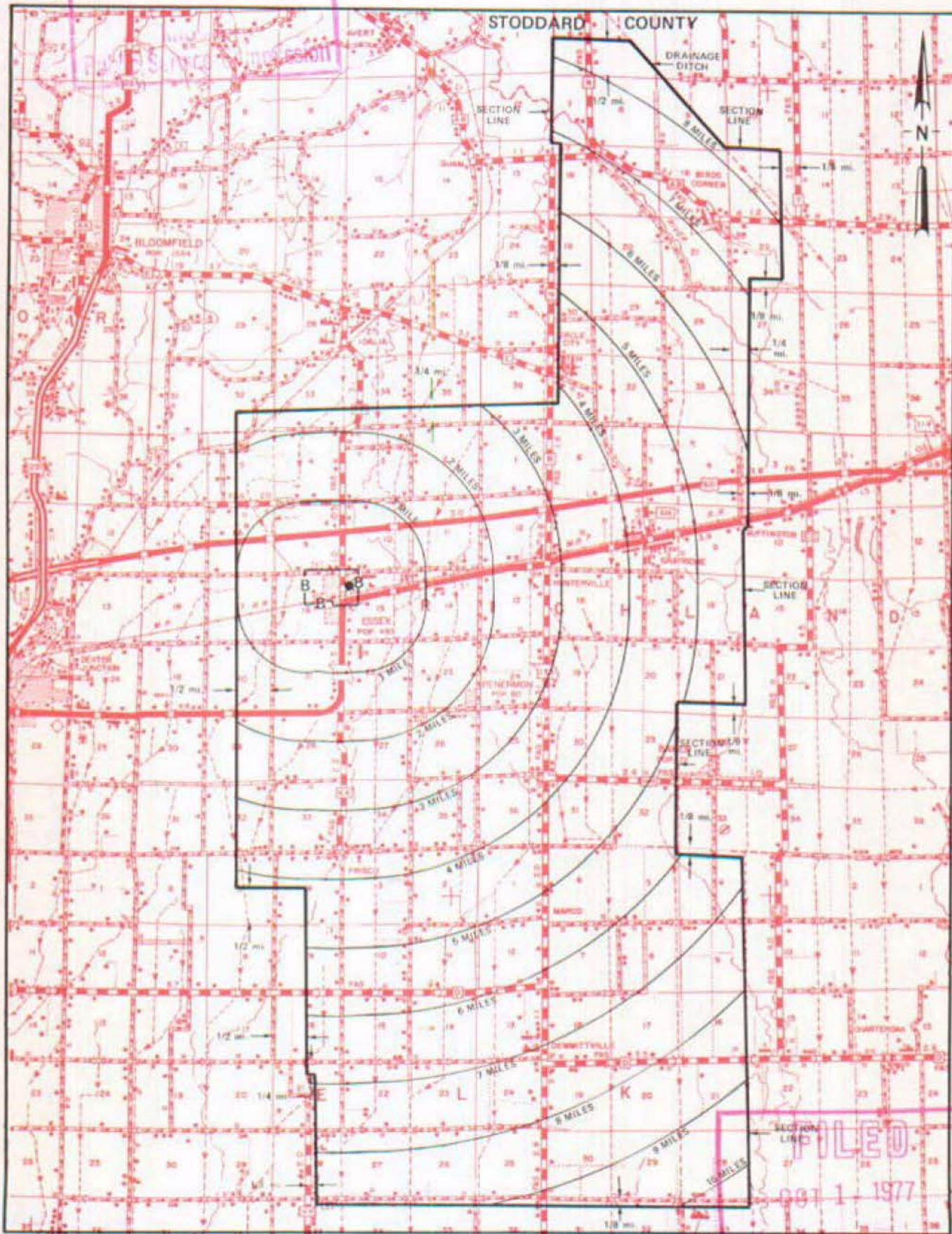
P. S. C. Mo. No. 17

Essex, Missouri

EXCHANGE AREA MAP

3rd REVISED SHEET 3
REPLACING 2nd REVISED SHEET 3

APR 14 1977



T26N
T25N

T25N
T24N

FILED
OCT 1 1977
Public Service Commission

CANCELLED
October 12, 2012
Missouri Public
Service Commission
By R. R. SHOCKLEY, Vice President, Missouri
Southwestern Bell Telephone Company
St. Louis, Missouri

Issued: April 15, 1977

Effective: OCT 1 1977

NO SUPPLEMENT TO THIS TARIFF WILL BE ISSUED EXCEPT FOR THE PURPOSE OF CANCELING THIS TARIFF.

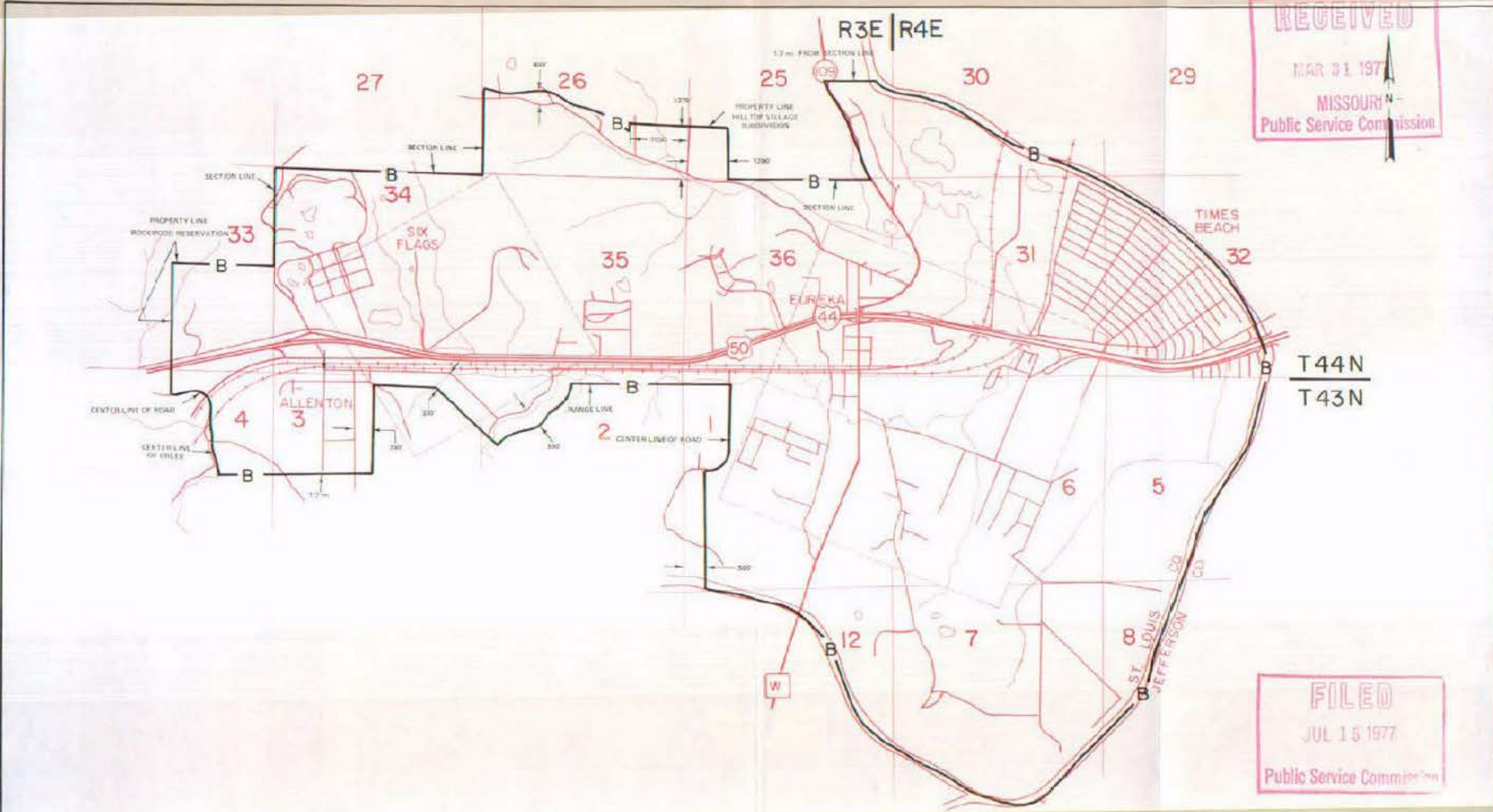
P. S. C. Mo. No. 17
BASE RATE AREA MAP

Eureka, Missouri

6th REVISED SHEET 2
REPLACING 5th REVISED SHEET 2

CANCELLED - Missouri Public Service Commission - 05/01/2024 - TN-2024-0278 - JI-2024-0142

RECEIVED
MAR 31 1977
MISSOURI
Public Service Commission



T44N
T43N

FILED
JUL 15 1977
Public Service Commission

1" = 2500'

APR 4 1977

By R. R. SHOCKLEY, Vice President, Missouri
Southwestern Bell Telephone
St. Louis, Missouri

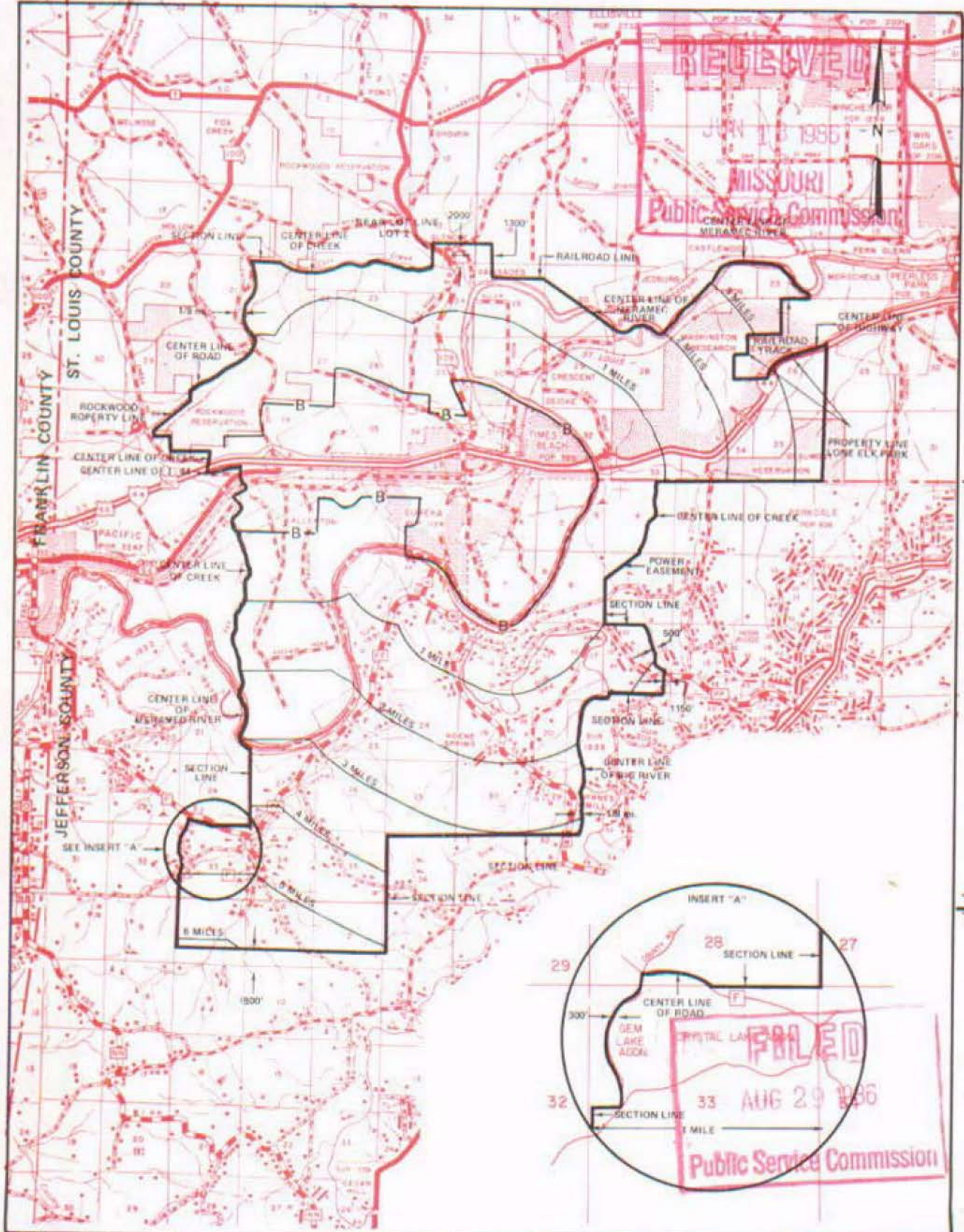
Issued: _____

Effective: JUL 15 1977

EXCHANGE AREA MAP

16th REVISED SHEET 3 REPLACING 15th REVISED SHEET 3

CANCELLED - Missouri Public Service Commission - 05/01/2024 - TN-2024-0278 - JJ-2024-0142



T45N
T44N

T44N
T43N

T43N
T42N

R2E | R3E

R3E | R4E

R4E | R5E

By R. D. BARRON, President, Missouri Division
Southwestern Bell Telephone Company
St. Louis, Missouri

Issued: JUNE 27, 1986

Effective: AUGUST 29, 1986

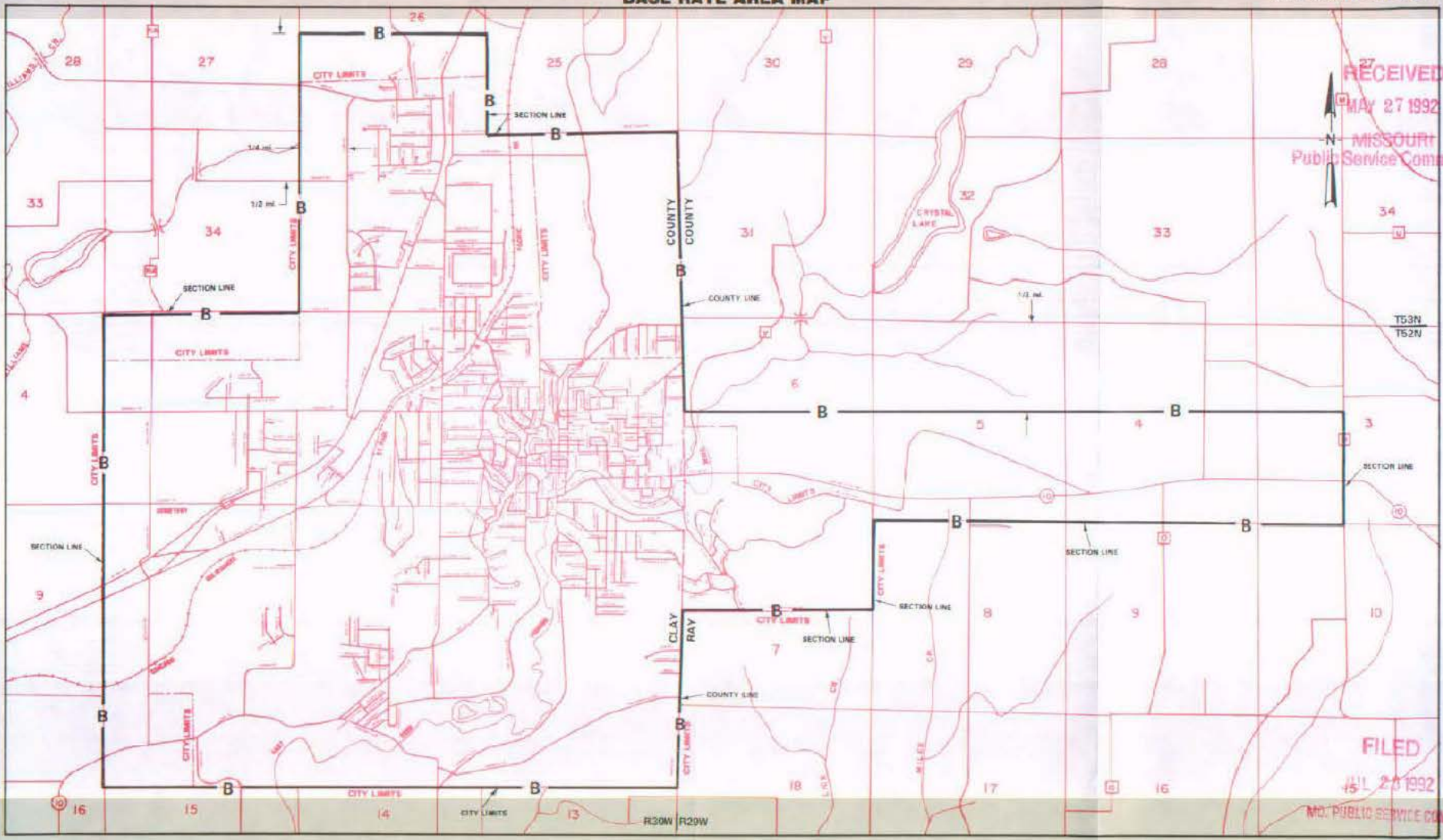
CANCELLED - Missouri Public Service Commission - 05/01/2024 - TN-2024-0278 - JI-2024-0142

NO SUPPLEMENT TO THIS TARIFF WILL BE ISSUED EXCEPT FOR THE PURPOSE OF CANCELING THIS TARIFF.

P. S. C. Mo. No. 17 BASE RATE AREA MAP

Excelsior Springs, Missouri

4th REVISED SHEET 2
REPLACING 3rd REVISED SHEET 2



RECEIVED
MAY 27 1992
MISSOURI
Public Service Commission

FILED

JUL 23 1992

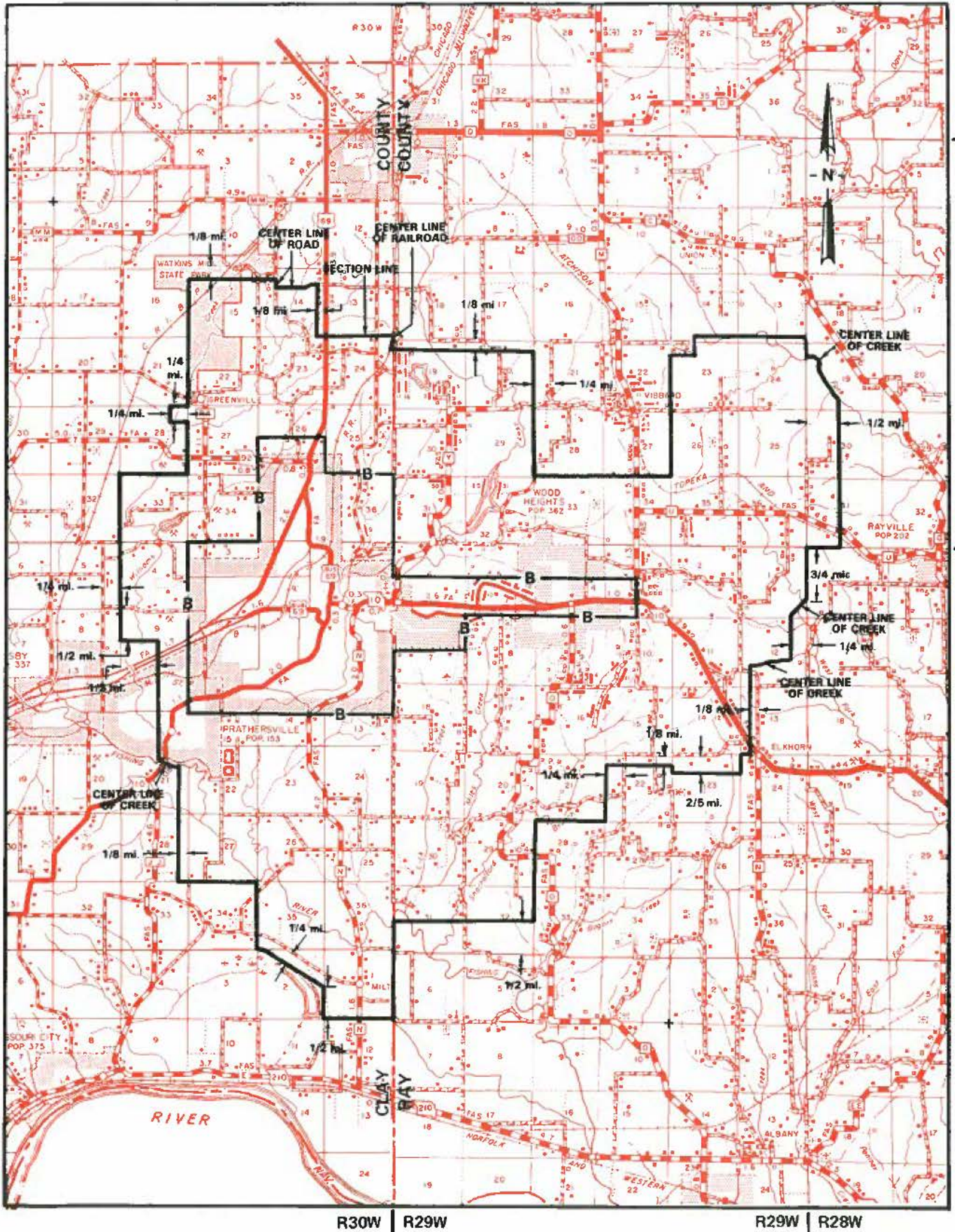
MO. PUBLIC SERVICE COMM.

By R. D. BARRON, PRESIDENT, MISSOURI DIVISION
Southwestern Bell Telephone Company
St. Louis, Missouri

Issued: JUN 02 1992

Effective: JUL 23 1992

CANCELLED - Missouri Public Service Commission - 05/01/2024 - TN-2024-0278 - JI-2024-0142



Issued: July 7, 2009

By DAVID NICHOLS, President - Missouri
St. Louis, Missouri

FILED
Missouri Public
Service Commission
JI-2010-0012

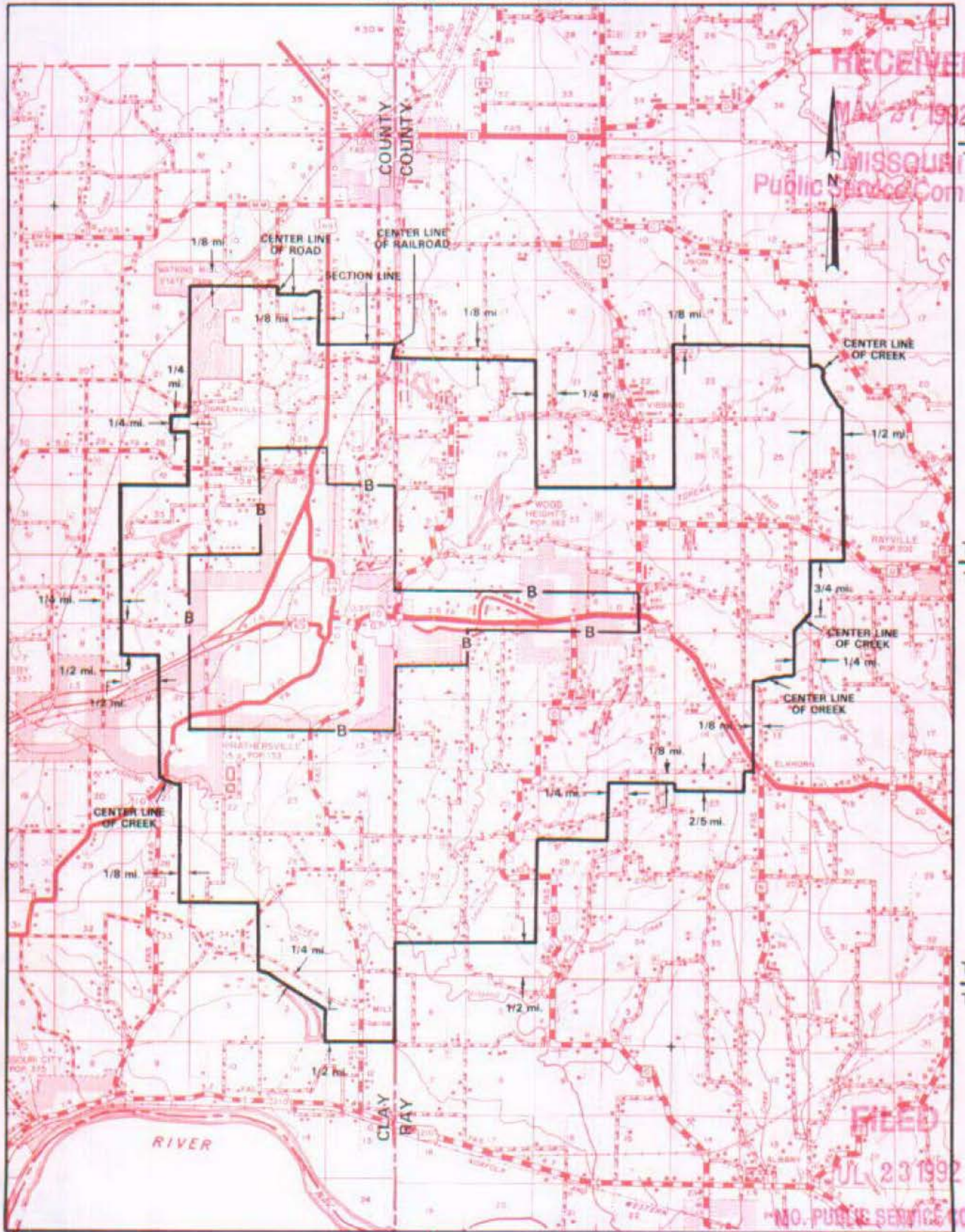
Effective: August 6, 2009

NO SUPPLEMENT TO THIS TARIFF WILL BE ISSUED EXCEPT FOR THE PURPOSE OF CANCELING THIS TARIFF.

Excelsior Springs, Missouri

P. S. C. Mo. No. 17 EXCHANGE AREA MAP

7th REVISED SHEET 3
REPLACING 6th REVISED SHEET 3



RECEIVED
MAY 21 1992
MISSOURI
Public Service Commission

T54N
T53N

T53N
T52N

T52N
T51N

FILED
JUL 23 1992
MO. PUBLIC SERVICE COMM.

R30W | R29W | R29W | R28W

CANCELLED
August 6, 2009
Missouri Public
Service Commission
JI-2010-0012

JUN 02 1992

By R. D. BARRON, PRESIDENT, MISSOURI DIVISION
Southwestern Bell Telephone Company
St. Louis, Missouri

Effective: JUL 23 1992