

3/1/90  
Hamilton will  
check further with them  
and advise.

**Southwestern Bell  
Telephone**

100 North Tucker Boulevard  
St. Louis, Missouri 63101  
Phone (314) 247-4465

January 2, 1990

**RECEIVED**  
JAN - 2 1990

Mr. Ralph Gladden  
Rate and Tariff Examiner  
Missouri Public Service Commission  
P.O. Box 360  
Jefferson City, Missouri 65102

OFFICE OF THE SECRETARY  
PUBLIC SERVICE COMMISSION

Re: Case Nos. TR-83-325 and TR-84-97

Dear Mr. Gladden:

This concerns the above-referenced Missouri Case Numbers and our tariffs pertaining to the Missouri portion of the Hamburg, Iowa Exchange in conjunction with Docket No. RPU-82-49 in Iowa.

On November 8, 1989, the Iowa State Utilities Board issued an "Order Affirming Proposed Decision" in this matter that clears the way for the appropriate refunds to be made to customers for the difference between amounts collected under interim rates and the amounts which would have been collected if final rates had been in effect during the interim period. I have attached a copy of this Order for your information. The refund liability is for the period from May 1, 1983 through August 31, 1986.

Customers in the Missouri portion of the Hamburg, Iowa Exchange have been paying the interim rates and, accordingly, are eligible to receive the appropriate refunds. Northwestern Bell Telephone Company has indicated it will be necessary to manually determine the refund amounts for Missouri customers, and they plan to identify the appropriate refund amounts in a timely manner.

I will follow-up with the appropriate Northwestern Bell Telephone Company personnel involved in this project and provide you with a full report and accounting of the refunds made to customers in the Missouri portion of this exchange as soon as the information is made available.

CANCELLED - Missouri Public Service Commission - 05/01/2024 - TN-2024-0278 - JI-2024-0142

Also, there have been no further Orders issued by the Iowa State Utilities Board in Docket No. RPU-84-7. Accordingly, the refund liability in this Docket is still pending.

If you have any questions regarding this matter, please call me on (314) 247-5765.

Very truly yours,



Area Manager  
Rate Administration

Attachment



*Rec'd 11/10/89*

TERRY E. BRANSTAD, GOVERNOR

IOWA STATE UTILITIES BOARD  
DEPARTMENT OF COMMERCE

NORTHWESTERN BELL TELEPHONE COMPANY

Docket No. RFU-88-25 (RPU-82-49)

"ORDER AFFIRMING PROPOSED DECISION"

Issued November 8, 1989

Parties Served:

R. L. Bruner  
General Manager-Regulatory  
Northwestern Bell Telephone Company  
925 High Street  
Des Moines, IA 50309

Dellon E. Coker, Chief  
Regulatory Law Office  
U.S. Army Legal Services Agency  
JALS-RL 3147  
6511 Columbia Pike  
Falls Church, VA 22041

Michael H. Salsbury, Attorney  
Jenner & Block  
One IBM Plaza  
Chicago, IL 60611

David J.W. Proctor, Attorney  
Bradshaw, Fowler, Proctor & Fairgrave  
1100 Des Moines Building  
Des Moines, IA 50307

James R. Maret  
Consumer Advocate  
Department of Justice  
Consumer Advocate Division  
Lucas State Office Building  
Des Moines, IA 50319

CERTIFICATE OF SERVICE

The undersigned hereby certifies that the foregoing document has been served this day upon all parties of record in this proceeding by mailing, by first class mail, to each such party a copy thereof, in properly addressed envelope with charges prepaid.

Date 11-08-89

*Walter Rada*

CANCELLED - Missouri Public Service Commission - 05/01/2024 - TN-2024-0278 - JI-2024-0142

STATE OF IOWA  
DEPARTMENT OF COMMERCE  
UTILITIES DIVISION

IN RE:  
NORTHWESTERN BELL TELEPHONE  
COMPANY

DOCKET NO. RFU-88-25  
(RPU-82-49)

ORDER AFFIRMING PROPOSED DECISION

(Issued November 8, 1989)

On June 7, 1989, the Administrative Law Judge (ALJ) issued a "Proposed Order Approving Refund Plan" in Docket No. RFU-88-25 relating to Northwestern Bell Telephone Company's (Northwestern Bell) 1982 rate case, Docket No. RPU-82-49. On June 21, 1989, the Consumer Advocate Division of the Department of Justice (Consumer Advocate) filed a notice of appeal of the ALJ's proposed order alleging error in a procedural ruling, the "Order Denying Request to Take Official Notice and Requiring Briefs," issued March 10, 1989. The Consumer Advocate had filed a request to take official notice on February 14, 1989, requesting that certain depreciation expense and depreciation reserve information from Docket No. RPU-88-6 be officially noticed in this docket. The ALJ denied Consumer Advocate's request finding that the information for which official notice was sought was not material to any issue relating to the refund and that Consumer Advocate's approach and argument was not consistent with IOWA CODE § 476.6(13) (1989).

By order dated July 11, 1989, the Utilities Board (Board) identified the two issues on appeal as:

1. Whether the ALJ was correct in denying the Consumer Advocate's request to take official notice; and

CANCELLED - Missouri Public Service Commission - 05/01/2024 - TN-2024-0278 - JI-2024-0142

Docket No. RFU-88-25 (RPU-82-49)  
Page 2

2. Whether the ALJ was correct in determining that no additional refunds are due and customers are not required to pay twice for certain depreciation expenses.

The Board has reviewed the "Proposed Order Approving Refund Plan" and the March 10, 1989, order as it affected the proposed decision. The Board finds the ALJ did not err in denying the request to take official notice and will affirm the proposed decision of the ALJ. However, the Board will modify the reasoning in the March 10, 1989, order by striking the portion of the order on page 2 beginning "The evidence the consumer advocate desires to include ..." and ending "enrichment at the expense of ratepayers." The Board's reasoning for supporting the decision follows.

In this appeal, the Consumer Advocate is requesting the Board to require Northwestern Bell to refund expense rather than revenue and such action is improper. IOWA CODE § 476.6(13) (1989). The Consumer Advocate's approach ignores the fact that revenue requirements are determined and rates are designed on the basis of a test period. It is necessary to use a test period to provide a measure for setting future rates. Although rates are fixed by the Board, subsequent history will always show different investment, expense, revenue, and units of service levels from those considered in the test period.

In the calculation of a refund under § 476.6(13), the only variables considered are revenue and units of service. See Northwestern Bell Tele. Co. v. Iowa State Commerce Comm'n, 359 N.W.2d 491, 499-500 (Iowa 1984). The Consumer Advocate recommends abandoning test-year methodology for one item, ELG depreciation expense, and advocates basing refunds on ELG expense booked over the whole of the refund period. It would retain test-year

Docket No. RFU-88-25 (RPU-82-49)  
Page 3

methodology for all other elements of revenues, expenses, and investments. This approach is contrary to IOWA CODE § 476.6(13) (1989) which requires the company to refund any amounts collected (revenues) in excess of the amounts which would have been collected under rates, charges, schedules, or regulations finally approved by the Board.

The final revenue requirement has been set and the rates proposed produce the allowed revenue requirement. The plan of refund proposes to return the difference between amounts collected under interim rates and the amounts which would have been collected if final rates had been in effect during the interim period. There is no injustice to ratepayers in the plan of refund. It will be approved.

IT IS THEREFORE ORDERED

1. The "Proposed Order Approving Refund Plan," and all decisions inhering therein, including, but not limited to, the "Order Denying Request to Take Official Notice and Requiring Briefs," are affirmed.
2. The reasoning in the March 10, 1989, "Order Denying Request to Take Official Notice and Requiring Briefs," is modified as provided in this order.

UTILITIES BOARD

*Dennis J. Nagel*

*Paul Langenberg*

ATTEST:

*James A. Cantel*  
Executive Secretary

*Nancy Shumanek Boyd*

Dated at Des Moines, Iowa, this 8th day of November, 1989.

CANCELLED - Missouri Public Service Commission - 05/01/2024 - TN-2024-0278 - JI-2024-0142

See Order 2 x 3

STATE OF MISSOURI  
PUBLIC SERVICE COMMISSION  
At a Session of the Public Service  
Commission held at its office  
in Jefferson City on the 30th  
day of August, 1989.

CASE NO. TR-90-46

In the matter of Southwestern Bell  
Telephone Company, St. Louis, Missouri,  
for authority to file a tariff  
reflecting increased rates for  
telephone service in the Missouri  
portion of the Hamburg, Iowa Exchange.

ORDER APPROVING TARIFF

The Hamburg, Iowa Exchange of Northwestern Bell Telephone Company contains a small area in the State of Missouri which includes approximately eighty (80) customers. The Missouri customers in the Hamburg, Iowa Exchange are served from the central office in Hamburg, Iowa and have the same calling scope as do customers in the Iowa portion of the exchange. Rates for telephone service in the Missouri portion are reflected in the Missouri tariff for Southwestern Bell Telephone Company, P.S.C. Mo. No. 17, and have historically matched rates for the Iowa customers in order to achieve rate conformity within the exchange.

The State of Iowa Department of Commerce Utilities Division authorized increased rates in its Docket No. RPU-88-6. On July 31, 1989, Southwestern Bell Telephone Company submitted for Commission approval a revised tariff sheet for the Missouri portion of the Hamburg, Iowa exchange reflecting the increased rates authorized in Iowa with a requested effective date of September 1, 1989.

The Commission is of the opinion that a hearing need not be held in Missouri on this matter, and that the tariff filed by Southwestern Bell Telephone Company on July 31, 1989, reflecting rates for telephone service in the Missouri portion of the Hamburg, Iowa Exchanges should be allowed to go into effect on September 1, 1989, subject to refund pending a final decision of the State of Iowa Department of Commerce Utilities Division, which may be the result of a decision to be reached on the Writ of Review filed in the Polk County, Iowa Circuit Court.

---

It is, therefore,

ORDERED: 1. That the following tariff sheet submitted on July 31, 1989, by Southwestern Bell Telephone Company for the purpose of establishing rates for telephone service provided in the Missouri portion of the Hamburg, Iowa Exchanges, be, and the same is, hereby approved for service rendered on and after September 1, 1989.

P.S.C. Mo. No. 17, Missouri Portion, Hamburg, Iowa

15th Revised Sheet No. 1 Cancelling 14th Revised Sheet No. 1

*See Order 2 and 3, page 2!*

STATE OF MISSOURI  
PUBLIC SERVICE COMMISSION

At a Session of the Public Service  
Commission held at its office  
in Jefferson City on the 28th  
day of August, 1986.

Case No. TR-87-18:

In the matter of Southwestern Bell  
Telephone Company, St. Louis, Missouri,  
for authority to file a tariff reflecting  
increased rates for telephone service in  
the Missouri portion of the Hamburg, Iowa  
Exchange.

---

ORDER APPROVING TARIFF

The Hamburg, Iowa Exchange of Northwestern Bell Telephone Company contains a small area in the State of Missouri which includes approximately eighty (80) customers. The Missouri customers in the Hamburg, Iowa Exchange are served from the central office in Hamburg, Iowa and have the same calling scope as do customers in the Iowa portion of the exchange. Rates for telephone service in the Missouri portion are reflected in the Missouri tariff for Southwestern Bell Telephone Company, P.S.C. Mo. No. 17, and have historically matched rates for the Iowa customers in order to achieve rate conformity within the exchange.

The Iowa State Commerce Commission issued an Order in Docket RPU-84-7 on January 16, 1985, authorizing Northwestern Bell Telephone Company to establish revised permanent rates in the State of Iowa, including the Hamburg, Iowa Exchange. The revised rates were approved, subject to refund in the event Federal Communications Commission prescribed depreciation methods and rates are reversed upon appeal and not held binding upon the states. This matter is also the subject of a Writ of Review filed in the Polk County, Iowa Circuit Court. As of the issue date of this Order a decision has not been reached on the Writ of Review.

The Commission is of the opinion that a hearing need not be held in Missouri on this matter, and that the tariff filed by Southwestern Bell Telephone Company on May 23, 1986, reflecting rates for telephone service in the Missouri portion of the Hamburg, Iowa Exchanges should be allowed to go into effect on September 1, 1986, subject to refund pending a final decision of the Iowa State Commerce Commission which may be the result of a decision to be reached on the Writ of Review filed in the Polk County, Iowa Circuit Court.

---



It is, therefore,

ORDERED: 1. That the following tariff sheet submitted on May 23, 1986 by Southwestern Bell Telephone Company for the purpose of establishing rates for telephone service provided in the Missouri portion of the Hamburg, Iowa Exchange, be, and the same is, hereby approved for service rendered on and after September 1, 1986.

P.S.C. Mo. No. 17, Missouri Portion, Hamburg, Iowa  
13th Revised Sheet No. 1 Cancelling 12th Revised Sheet No. 1 and  
1st Revised Sheet No. 1.01

ORDERED: 2. That any revenue collected under the rates authorized herein which may be in excess of revenues from rates which may be finally determined by the Iowa Commerce Commission to be just and reasonable, shall be refunded, together with interest at the rate determined by the Iowa Commerce Commission but not less than nine percent (9%) per annum.

ORDERED: 3. That within sixty (60) days following any future decision of the Iowa Commerce Commission or any future decision resulting from the Writ of Review filed in the Polk County, Iowa Circuit Court, Southwestern Bell shall submit to this Commission a report reflecting revenues collected from customers in the Missouri portion of the Hamburg, Iowa Exchange under the rates authorized herein and revenues that would have been collected under any subsequent rates found by the Iowa Commerce Commission to be proper; and, if appropriate, submit a proposed procedure to refund any excess revenues which may have been collected during the interim periods.

ORDERED: 4. That this Order shall become effective on the date hereof.

BY THE COMMISSION  
*Harvey G. Hubbs*  
Harvey G. Hubbs  
Secretary

(S E A L)

Steinmeier, Chm., Musgrave,  
Mueller, Hendren and Fischer,  
CC., Concur.



**Southwestern Bell  
Telephone**

100 North Tucker Boulevard  
St. Louis, Missouri 63101  
Phone (314) 247-9800

RECEIVED

APR 28 1988

MISSOURI

Public Service Commission

April 27, 1988

Mr. Ralph Gladden  
Rate and Tariff Examiner  
Missouri Public Service Commission  
P.O. Box 360  
Jefferson City, Missouri 65102

Re: Case Nos. TR-83-325, TR-84-97 and TR-87-18

Dear Mr. Gladden:

This concerns the above-referenced Missouri Case Numbers and our tariffs pertaining to the Missouri Portion of the Hamburg, Iowa Exchange in conjunction with Docket Nos. RPU-82-49 and RPU-84-7 in Iowa. This correspondence will confirm our recent conversation regarding this matter.

As of April 8, 1988, there has been no further orders issued by the Iowa State Utilities Board in Docket No. RPU-84-7. Accordingly, the rates currently in effect for the Missouri portion of the Hamburg, Iowa Exchange, as a result of that case, are still subject to refund.

With regard to the status of Docket No. RPU-82-49, Northwestern Bell Telephone Company has advised that the Iowa Supreme Court has issued its ruling in this Docket, and it has been remanded back to the Iowa State Utilities Board for disposition. We will be notified when the Iowa State Utilities Board issues its final order in this Docket.

I will continue to monitor these dockets and keep you apprised of their current status. If you have any further questions regarding this matter, please call me on (314) 247-5765.

Very truly yours,

Area Manager  
Rate Administration



**Southwestern Bell  
Telephone**

100 North Tucker Boulevard  
St. Louis, Missouri 63101  
Phone (314) 247-9800

August // , 1987

Mr. Ralph Gladden  
Rate and Tariff Examiner  
Missouri Public Service Commission  
P.O. Box 360  
Jefferson City, Missouri 65102

**RECEIVED**

**AUG 14 1987**

**MISSOURI  
Public Service Commission**

RE: Case Nos. TR-83-325, TR-84-97 and TR-87-18

Dear Mr. Gladden:

This concerns the above referenced Missouri Case Numbers and our tariffs pertaining to the Missouri Portion of the Hamburg, Iowa Exchange in conjunction with Docket Nos. RPU-82-49 and RPU-84-7 in Iowa. This correspondence will confirm our recent conversation regarding this matter.

As of August 4, 1987, there has been no further Order issued by the Iowa Commerce Commission in Docket No. RPU-82-49. Therefore, rates authorized in this Docket applicable to Missouri subscribers for the May 1, 1983, through August 31, 1986, time frame are still subject to refund pending final resolution of this matter by the Iowa Commerce Commission.

Also, there have been no further Orders issued by the Iowa Commerce Commission in Docket No. RPU-84-7. Accordingly, the rates currently in effect for the Missouri Portion of the Hamburg, Iowa Exchange are also still subject to refund.

Attached for your perusal, is a copy of the correspondence dated August 4, 1987, from Northwestern Bell Telephone Company providing the aforementioned status report of these Dockets.

I will continue to monitor these Iowa Dockets and keep you apprised of their status. If you have any further questions regarding this matter, please call me on (314) 247-5765.

Very truly yours,

Area Manager  
Rate Administration

Attachment

cc: Ms. Anita Fenske-Stansfield, Hearing Examiner



**Northwestern Bell**

A US WEST COMPANY

Des Moines, Iowa 50309  
August 4, 1987

Mr. Bob Hamilton, Staff Manager-Rate Administration  
Southwestern Bell Telephone Company  
100 North Tucker Boulevard  
Room 1101  
St. Louis, MO 63101

Dear Mr. Hamilton:

We have reviewed the status of Dockets RPU-82-49 and RPU-84-7 as they relate to Hamburg, Missouri. There has been no change in their status.

During our May 15, 1986, meeting we discussed possible changes in our present arrangements. If you have had an opportunity to discuss those suggestions with your commission, we would be interested in their reaction.

Since you agreed to provide us with any changes in your tariff and we haven't heard from you, we assume there haven't been any.

Sincerely,

Kathy Sandstrom

*LL*



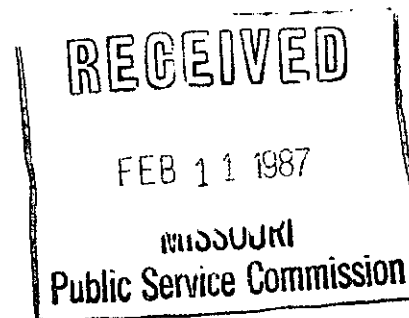
*ppp Ralph.  
Please file.  
ppp*

**Southwestern Bell Telephone**

100 North Tucker Boulevard  
St. Louis, Missouri 63101  
Phone (314) 247-9800

February 9, 1987

Mr. Paul Pederson  
Assistant Manager-Rates  
Missouri Public Service Commission  
Post Office Box 360  
Jefferson City, Missouri 65102



Dear Mr. Pederson:

Re: Case Nos. TR-83-325, TR-84-97 and TR-87-18.

This concerns the above referenced Missouri Case Numbers and our tariffs pertaining to the Missouri Portion of the Hamburg, Iowa, Exchange in conjunction with Docket Nos. RPU-82-49 and RPU-84-7 in Iowa.

As of February 3, 1987, there has been no further Order issued by the Iowa Commerce Commission in Docket No. RPU-82-49. Therefore, rates authorized in this Docket applicable to Missouri subscribers for the period May 1, 1983, through August 31, 1986, are still subject to refund pending final resolution of this matter by the Iowa Commerce Commission.

Also, there have been no further Orders issued by the Iowa Commerce Commission in Docket No. RPU-84-7. Accordingly, the rates currently in effect for the Missouri Portion of the Hamburg, Iowa, Exchange are also still subject to refund.

I will continue to monitor these Iowa Dockets and keep you apprised of their status. If you have any further questions regarding this matter, please call me on (314) 247-5765.

Very truly yours,

*Robert F. Hamilton*

Staff Manager  
Rate Administration

cc: Ms. Anita Fenske-Stansfield, Hearing Examiner  
Missouri Public Service Commission  
Post Office Box 360  
Jefferson City, Missouri 65102



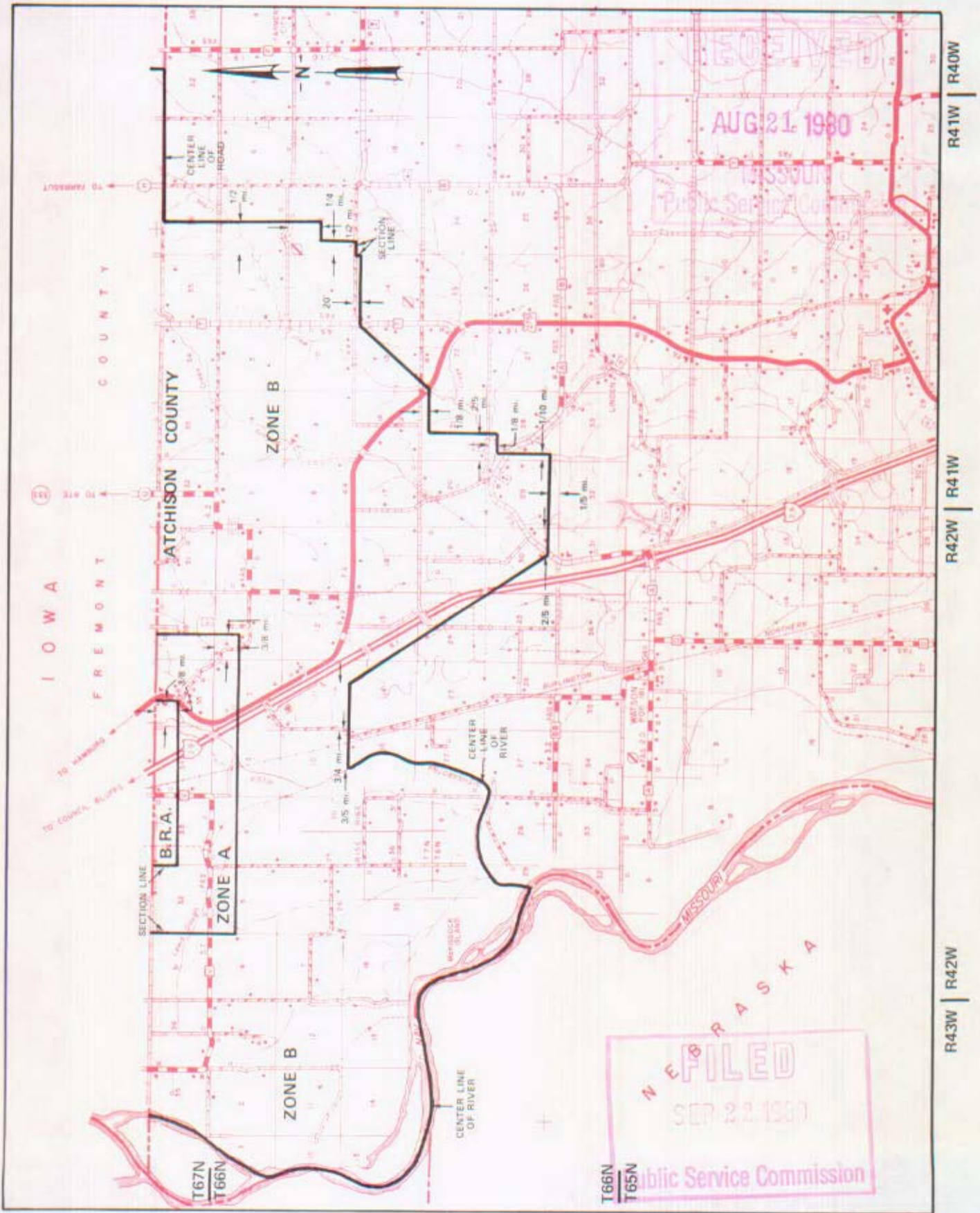
NO SUPPLEMENT TO THIS TARIFF WILL BE ISSUED EXCEPT FOR THE PURPOSE OF CANCELING THIS TARIFF.

Missouri Portion—Hamburg, Iowa

P. S. C. Mo. No. 17

4th REVISED SHEET 1-A  
REPLACING 3rd REVISED SHEET 1-A

# EXCHANGE AREA MAP



CANCELLED - Missouri Public Service Commission - 05/01/2024 - TN-2024-0278 - JI-2024-0142

By R. R. SHOCKLEY, Vice President, Missouri  
Southwestern Bell Telephone Company  
St. Louis, Missouri

SEP 22 1980

Issued: Aug 22, 1980

Effective: \_\_\_\_\_



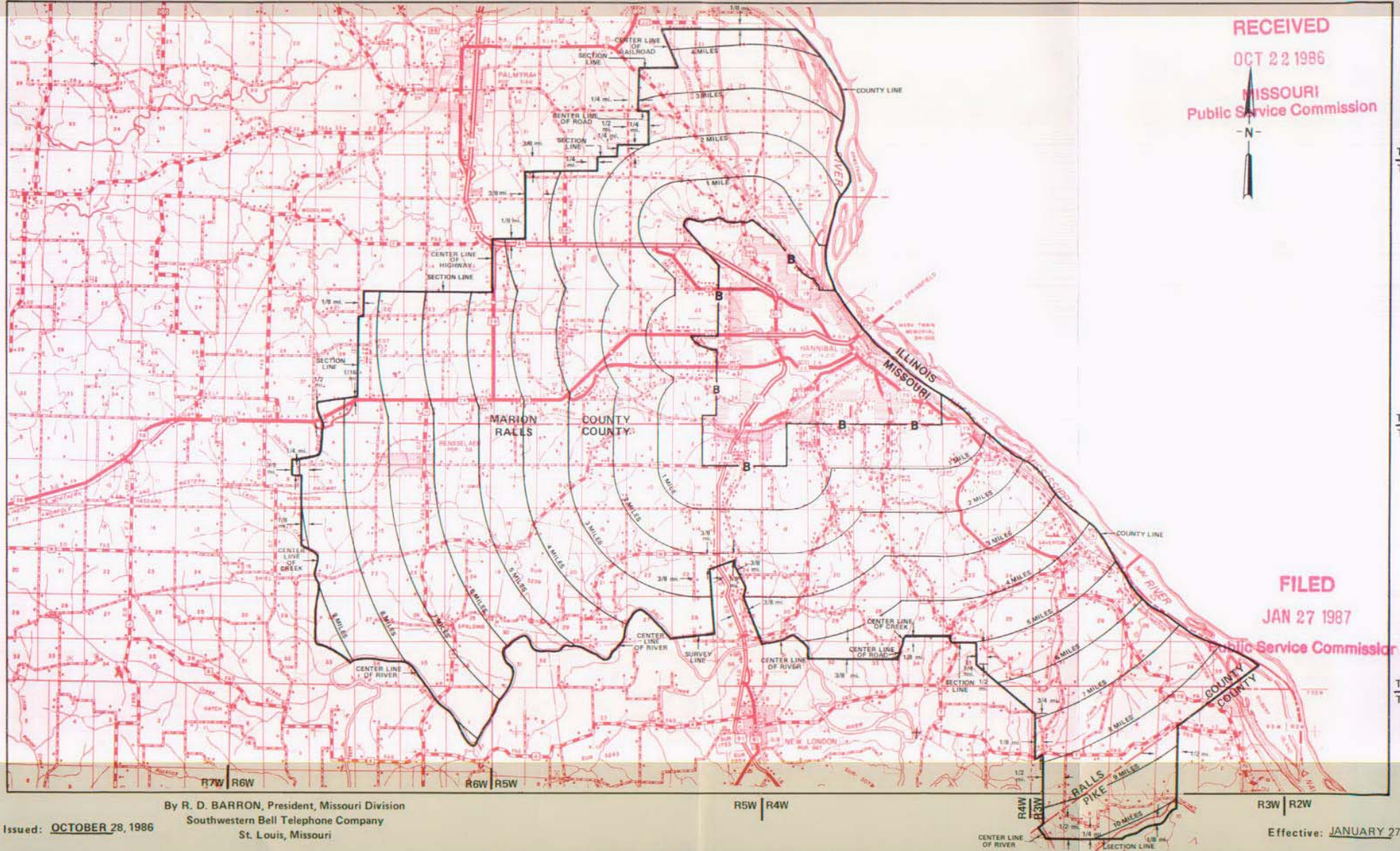
NO SUPPLEMENT TO THIS TARIFF WILL BE ISSUED EXCEPT FOR THE PURPOSE OF CANCELING THIS TARIFF.

### P. S. C. Mo. No. 17 EXCHANGE AREA MAP

Hannibal, Missouri

10th REVISED SHEET 3  
REPLACING 9th REVISED SHEET 3

CANCELLED - Missouri Public Service Commission - 05/01/2024 - TN-2024-0278 - JI-2024-0142



RECEIVED  
OCT 22 1986  
MISSOURI  
Public Service Commission



FILED  
JAN 27 1987

MISSOURI  
Public Service Commission

By R. D. BARRON, President, Missouri Division  
Southwestern Bell Telephone Company  
St. Louis, Missouri

Issued: OCTOBER 28, 1986

Effective: JANUARY 27, 1987

SBC PSC MO #17  
Hannibal, Missouri  
3<sup>rd</sup> Revised Sheet 2  
Replacing 2<sup>nd</sup> Revised Sheet 2

# Non-Scannable Map

(Is viewable in the Data Center  
200 Madison Street, 1<sup>st</sup> Floor  
Jefferson City MO)



NO SUPPLEMENT TO THIS TARIFF WILL BE ISSUED EXCEPT FOR THE PURPOSE OF CANCELING THIS TARIFF.

P. S. C. Mo. No. 17  
BASE RATE AREA MAP

Harvester, Missouri

8th REVISED SHEET 2  
REPLACING 7th REVISED SHEET 2

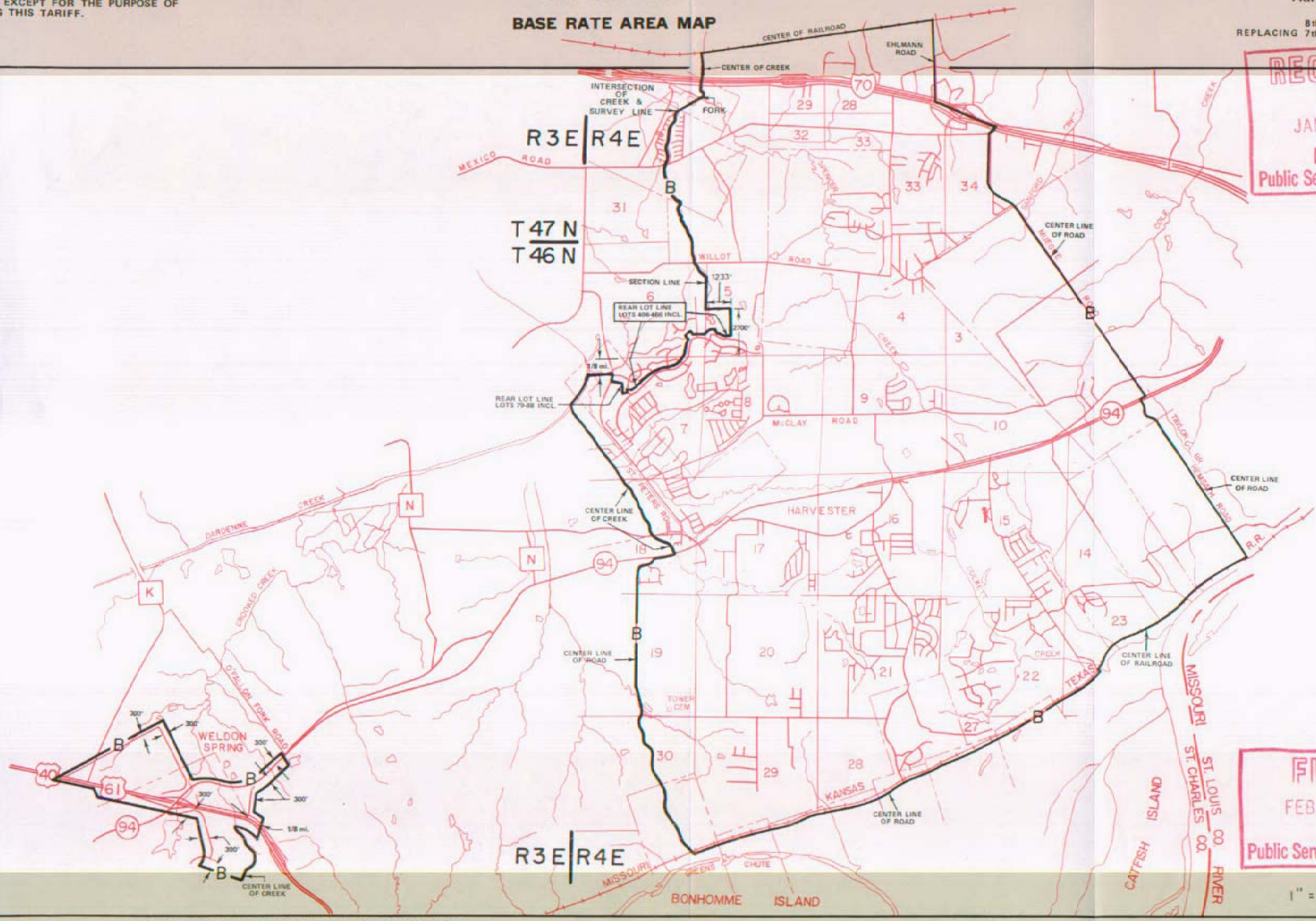
RECEIVED  
JAN 16 1985  
MISSOURI  
Public Service Commission

- N -

FILED  
FEB 15 1985  
Public Service Commission

1" = 4160'

CANCELLED - Missouri Public Service Commission - 05/01/2024 - TN-2024-0278 - JI-2024-0142



By R. D. BARRON, PRESIDENT - MISSOURI DIVISION  
Southwestern Bell Telephone Company  
St. Louis, Missouri

Issued: JANUARY 16, 1985

Effective: FEBRUARY 15, 1985



NO SUPPLEMENT TO THIS TARIFF WILL BE ISSUED EXCEPT FOR THE PURPOSE OF CANCELING THIS TARIFF.

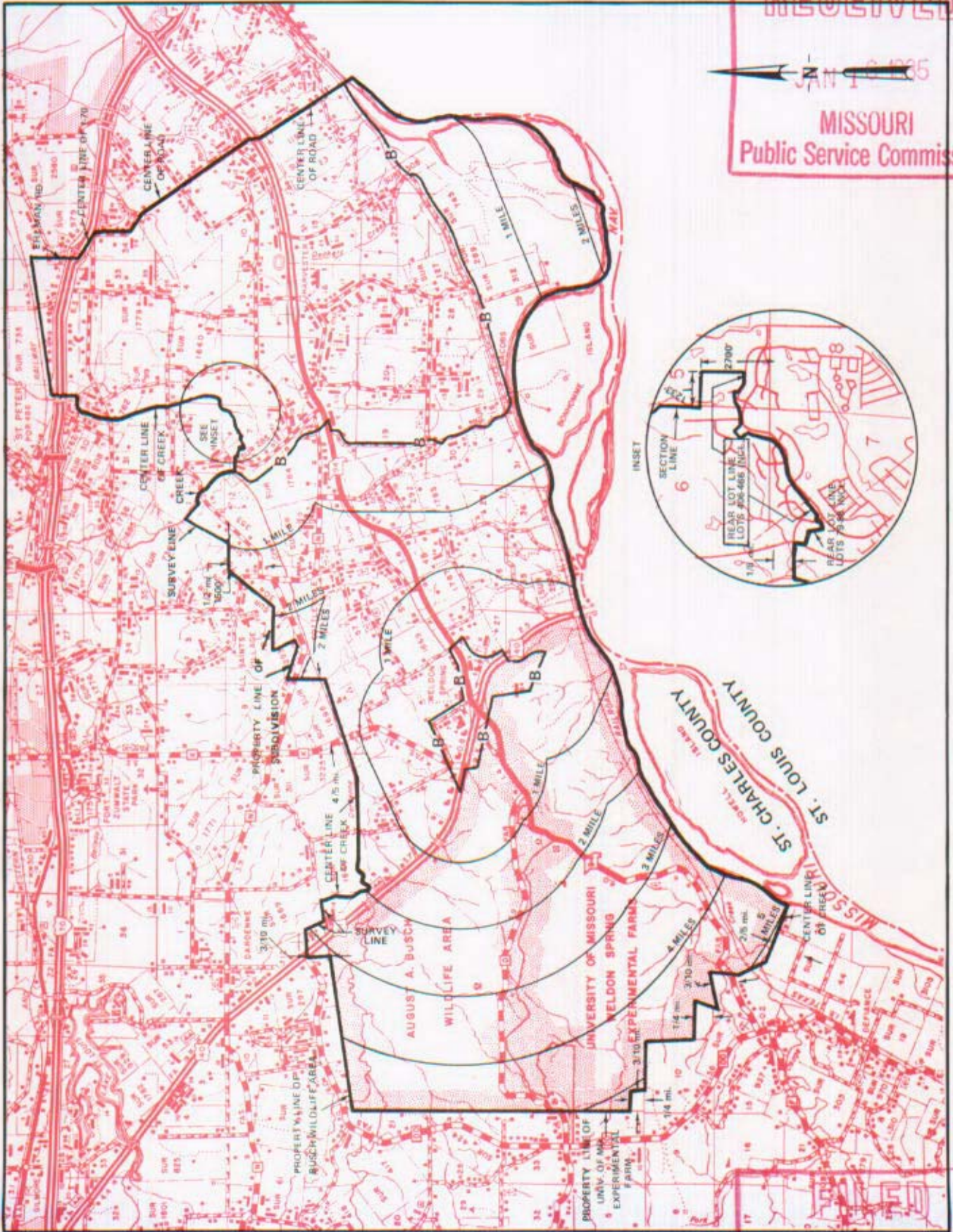
P. S. C. Mo. No. 17

Harvester, Missouri

EXCHANGE AREA MAP

11th REVISED SHEET 3  
REPLACING 10th REVISED SHEET 3

RECEIVED  
JAN 16 1985  
MISSOURI  
Public Service Commission



CANCELLED - Missouri Public Service Commission - 05/01/2024 - TN-2024-0278 - JI-2024-0142

T47N | T46N

T46N | T45N

By R. D. BARRON, PRESIDENT— MISSOURI DIVISION  
Southwestern Bell Telephone Company  
St. Louis, Missouri

Issued: JANUARY 16, 1985

FEB 15 1985

Effective: FEBRUARY 15, 1985

R3E | R4E

R2E | R3E



NO SUPPLEMENT TO THIS TARIFF WILL BE ISSUED EXCEPT FOR THE PURPOSE OF CANCELING THIS TARIFF.

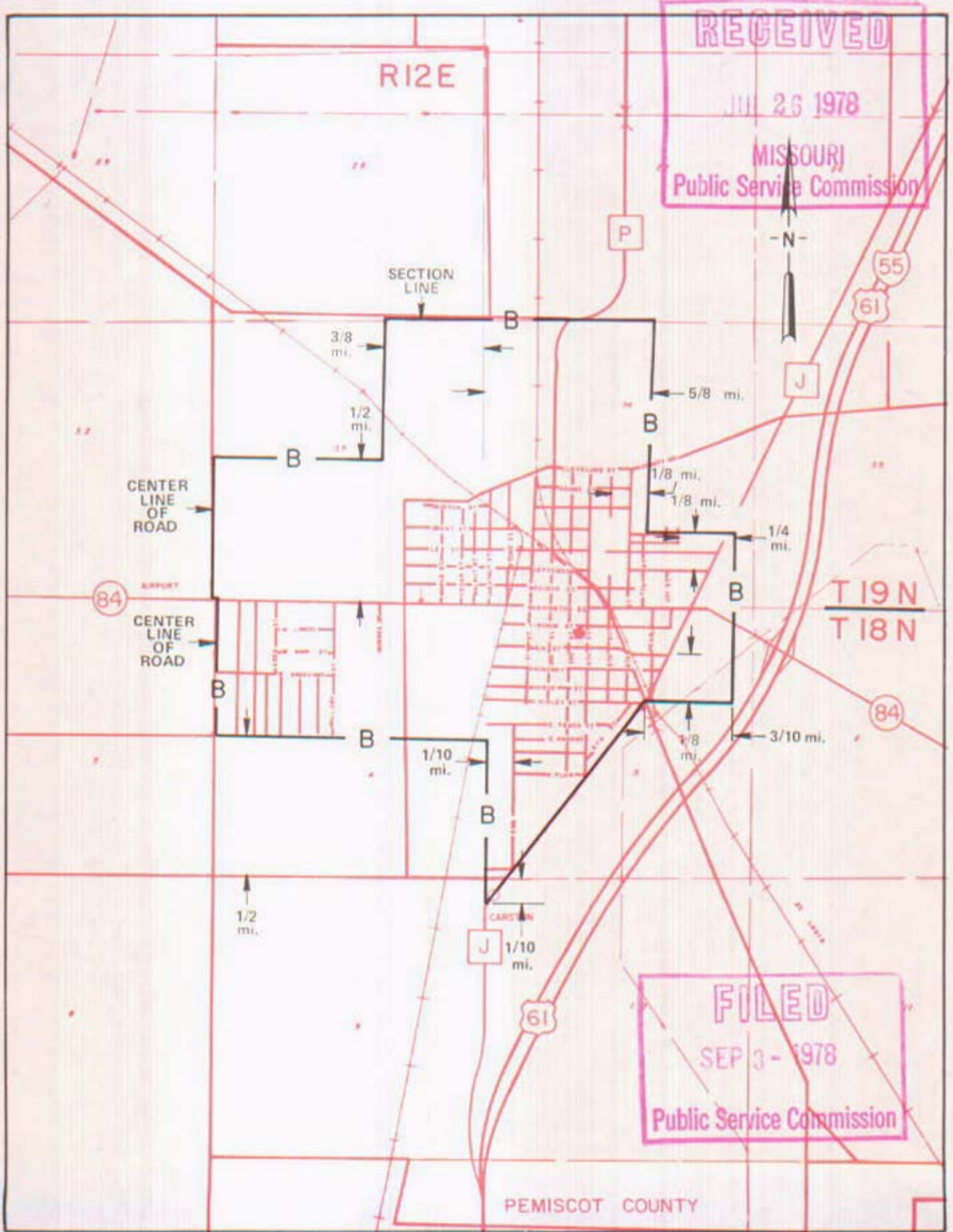
P. S. C. Mo. No. 17

Hayti, Missouri

BASE RATE AREA MAP

2nd REVISED SHEET 2  
REPLACING 1st REVISED SHEET 2

CANCELLED - Missouri Public Service Commission - 05/01/2024 - TN-2024-0278 - JI-2024-0142



By R. R. SHOCKLEY, Vice President, Missouri  
Southwestern Bell Telephone Company  
St. Louis, Missouri

Issued: AUGUST 1, 1978

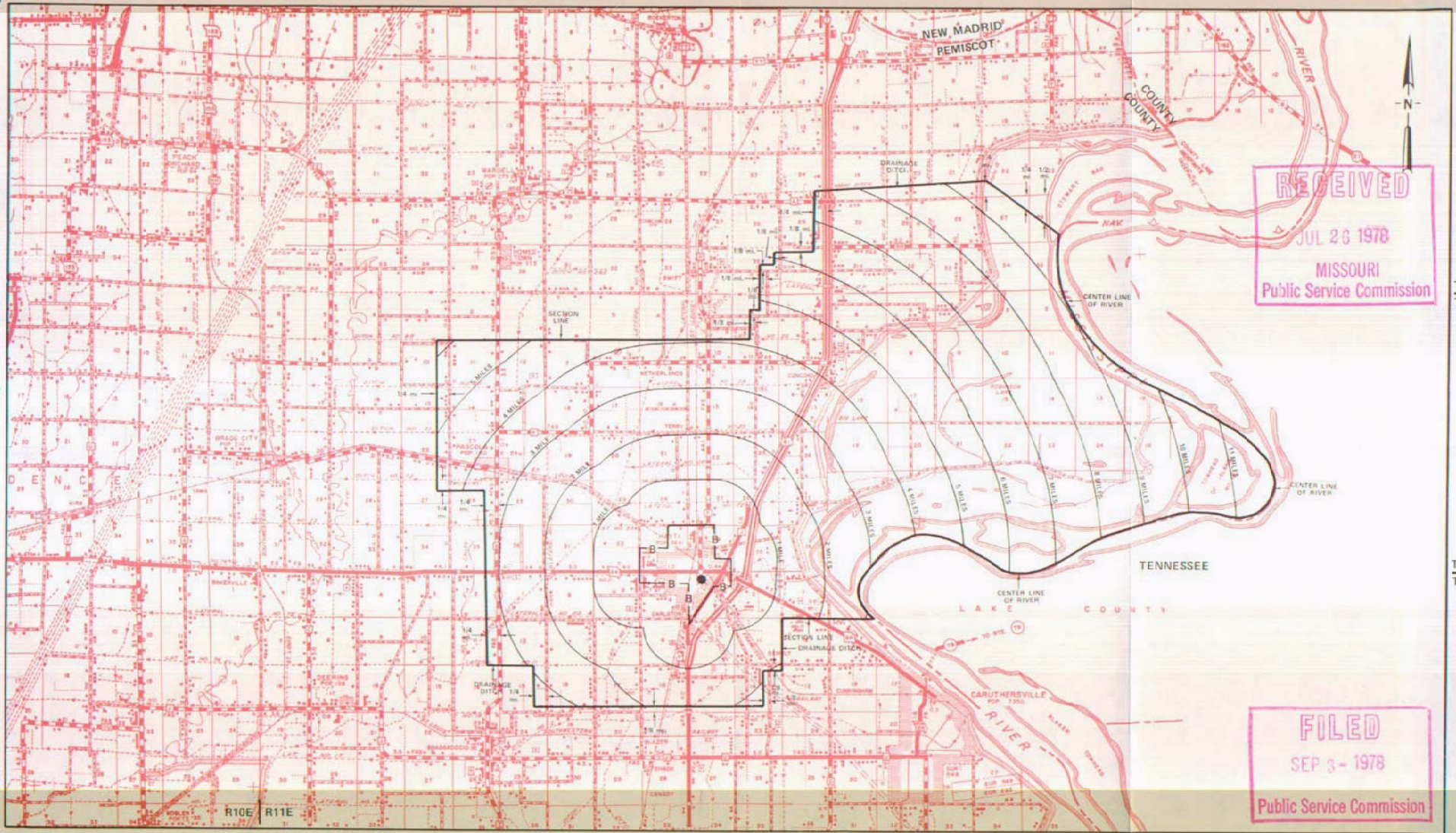
Effective: SEPTEMBER 3, 1978



NO SUPPLEMENT TO THIS TARIFF WILL BE ISSUED EXCEPT FOR THE PURPOSE OF CANCELING THIS TARIFF.

P. S. C. Mo. No. 17  
EXCHANGE AREA MAP

Hayti, Missouri  
6th REVISED SHEET 3  
REPLACING 5th REVISED SHEET 3



RECEIVED  
JUL 26 1978  
MISSOURI  
Public Service Commission

FILED  
SEP 3 - 1978  
Public Service Commission

T20N  
T19N

T19N  
T18N

CANCELLED Missouri Public Service Commission - 05/01/2024 - TN-2024-0278 - JI-2024-0142

By R. R. SHOCKLEY, Vice President, Missouri  
Southwestern Bell Telephone Company  
St. Louis, Missouri

R11E | R12E

R12E | R13E

R13E | R14E

Issued AUGUST 1, 1978

Effective: SEPTEMBER 3, 1978

CANCELLED - Missouri Public Service Commission - 05/01/2024 - TN-2024-0278 - JI-2024-0142

HICKMAN MILLS, MARTIN CITY, GRANDVIEW, DALLAS

*(known as ...)*

see

KANSAS CITY DISTRICT EXCHANGE

under KANSAS CITY

EFFECTIVE JULY 1, 1938



NO SUPPLEMENT TO THIS TARIFF WILL BE ISSUED EXCEPT FOR THE PURPOSE OF CANCELING THIS TARIFF.

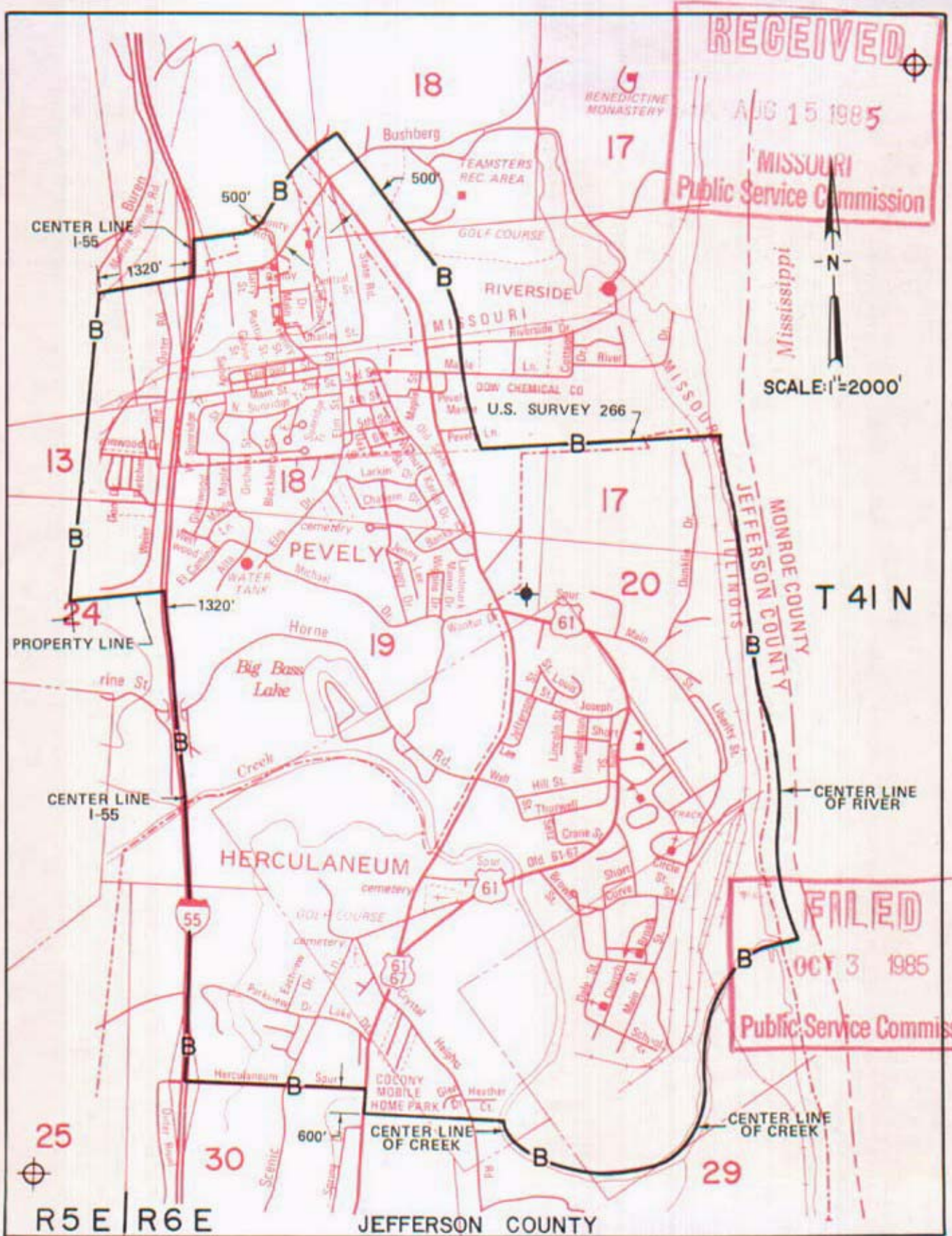
P. S. C. Mo. No. 17

Herculaneum-Pevely, Missouri

1st REVISED SHEET 2  
REPLACING ORIGINAL SHEET 2

### BASE RATE AREA MAP

CANCELLED - Missouri Public Service Commission - 05/01/2024 - TN-2024-0278 - JI-2024-0142



By R. D. BARRON, PRESIDENT - MISSOURI DIVISION  
Southwestern Bell Telephone Company  
St. Louis, Missouri

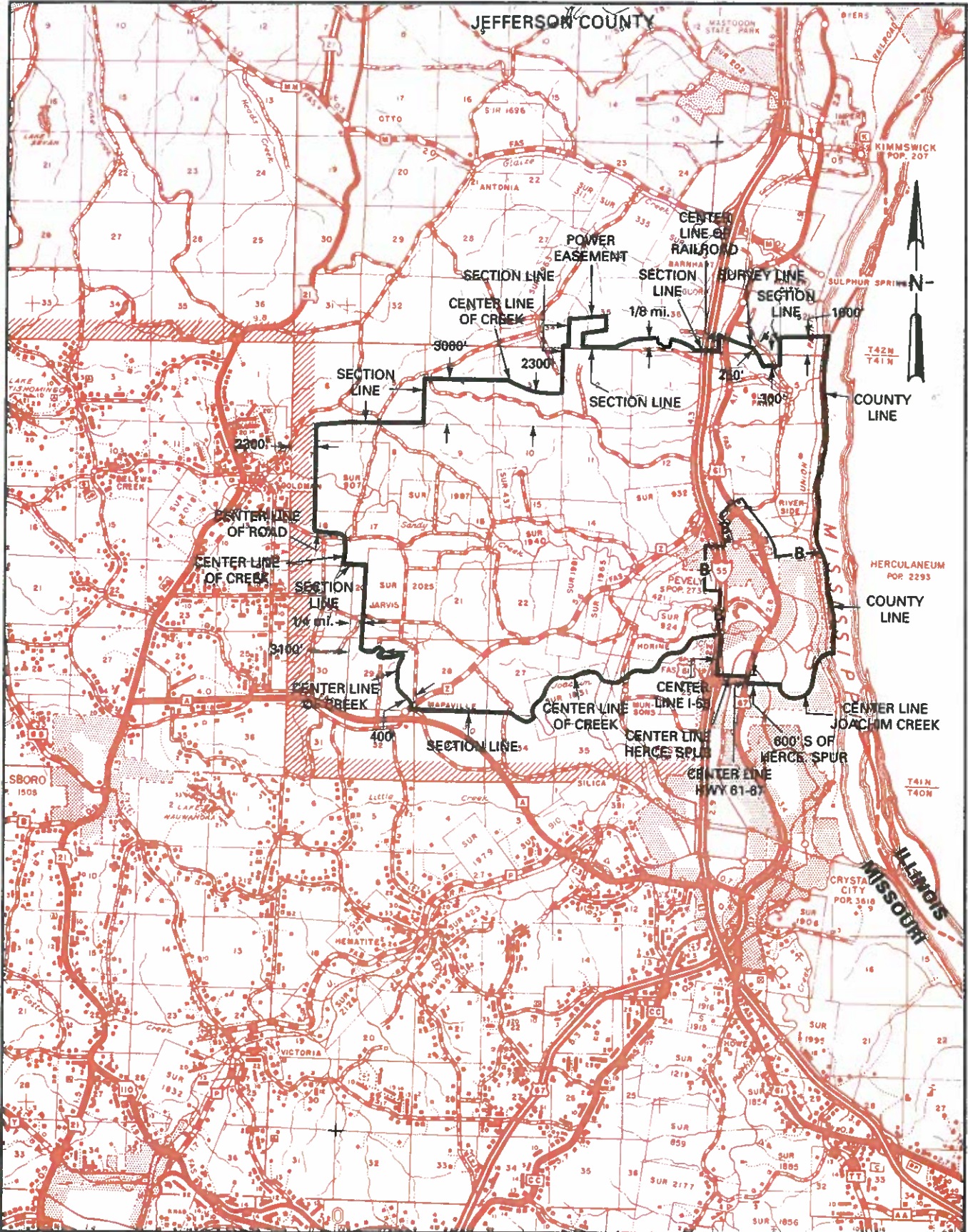
Issued: AUG 15, 1985

Effective: OCT 3, 1985



**EXCHANGE AREA MAP**

CANCELLED - Missouri Public Service Commission - 05/01/2024 - TN-2024-0278 - JI-2024-0142



R4E | R5E

Filed  
Missouri Public Service Commission  
JI-2009-0374

R5E | R6E  
Effective: December 17, 2008

Issued: November 17, 2008

By DAVID NICHOLS, President - Missouri  
St. Louis, Missouri



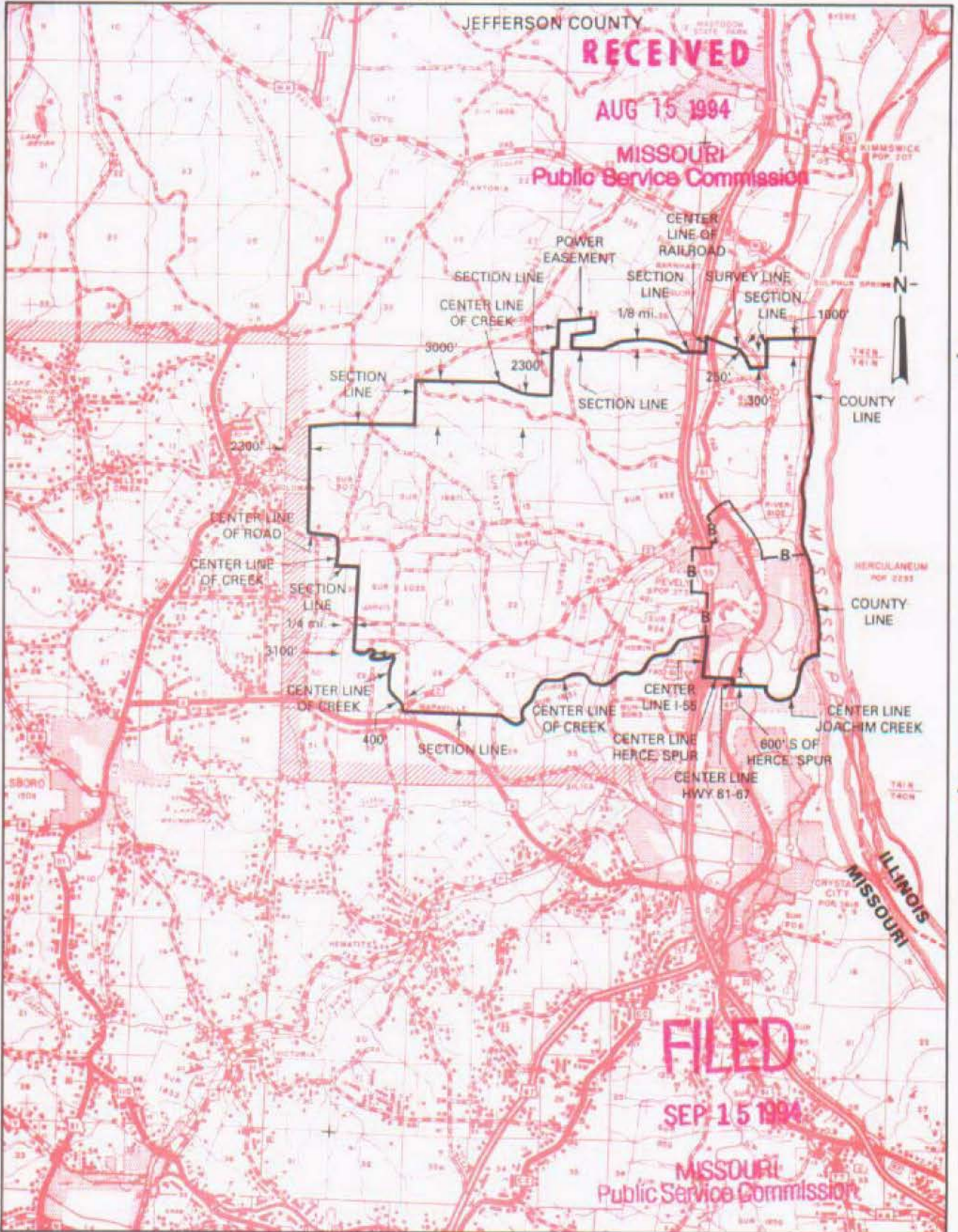
NO SUPPLEMENT TO THIS TARIFF WILL BE ISSUED EXCEPT FOR THE PURPOSE OF CANCELING THIS TARIFF.

Herculaneum-Pevely, Missouri

P. S. C. Mo. No. 17

6th REVISED SHEET 3  
REPLACING 5th REVISED SHEET 3

### EXCHANGE AREA MAP



Cancelled  
December 17, 2008  
Missouri Public  
Service Commission  
JI-2009-0374

R4E | R5E

R5E | R6E

By M. H. SCHULTEIS, Executive Director - External Affairs  
Southwestern Bell Telephone Company  
St. Louis, Missouri

Issued: August 15, 1994

Effective: September 15, 1994



NO SUPPLEMENT TO THIS TARIFF WILL BE ISSUED EXCEPT FOR THE PURPOSE OF CANCELING THIS TARIFF.

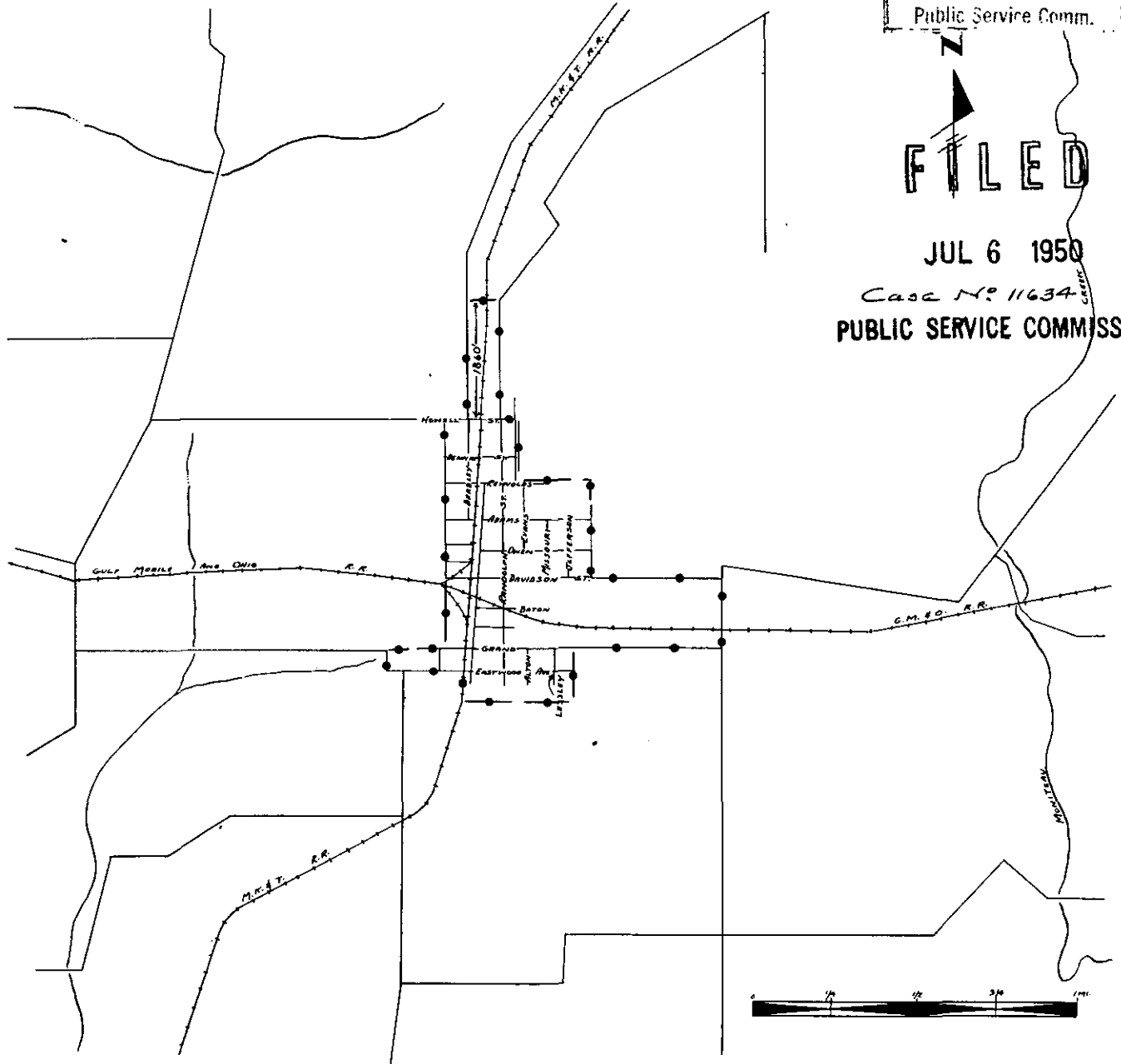
Higbee, Missouri  
ORIGINAL SHEET  
REPLACING ORIGINAL SHEET 1-A

### P. S. C.-Mo. No. 17 BASE RATE AREA MAP

RECEIVED  
JUN 27 1950  
MISSOURI  
Public Service Comm.

FILED

JUL 6 1950  
Case No. 11634  
PUBLIC SERVICE COMMISSION



CODE  
BELL CENTRAL OFFICE:   
BASE RATE AREA LIMITS: 

CANCELLED - Missouri Public Service Commission - 05/01/2024 - TN-2024-0278 - JI-2024-0142

Issued: June 27, 1950

Effective: July 6, 1950

By H. R. TOWLES, General Manager  
Southwestern Bell Telephone Company  
St. Louis, Missouri

NO SUPPLEMENT TO THIS TARIFF WILL BE ISSUED EXCEPT FOR THE PURPOSE OF CANCELING THIS TARIFF.

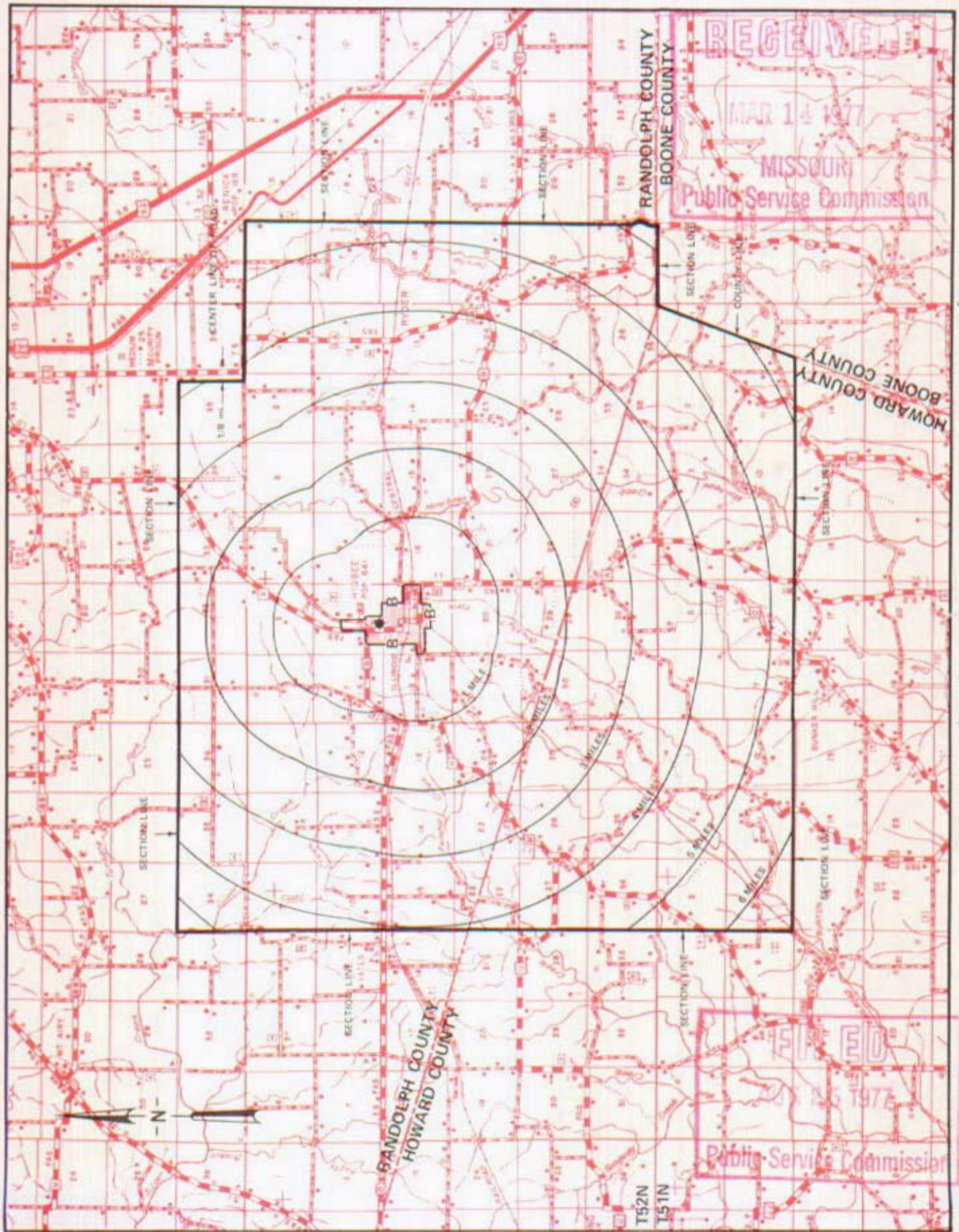
P. S. C. Mo. No. 17

Higbee, Missouri

# EXCHANGE AREA MAP

5th REVISED SHEET 3  
REPLACING 4th REVISED SHEET 3

CANCELLED - Missouri Public Service Commission - 05/01/2024 - TN-2024-0278 - JI-2024-0142



T53N  
T52N

By R. R. SHOCKLEY, Vice President, Missouri  
Southwestern Bell Telephone Company

St. Louis, Missouri

AUG 25 1977

Issued: March 15, 1977

Effective:



NO SUPPLEMENT TO THIS TARIFF WILL BE ISSUED EXCEPT FOR THE PURPOSE OF CANCELING THIS TARIFF.

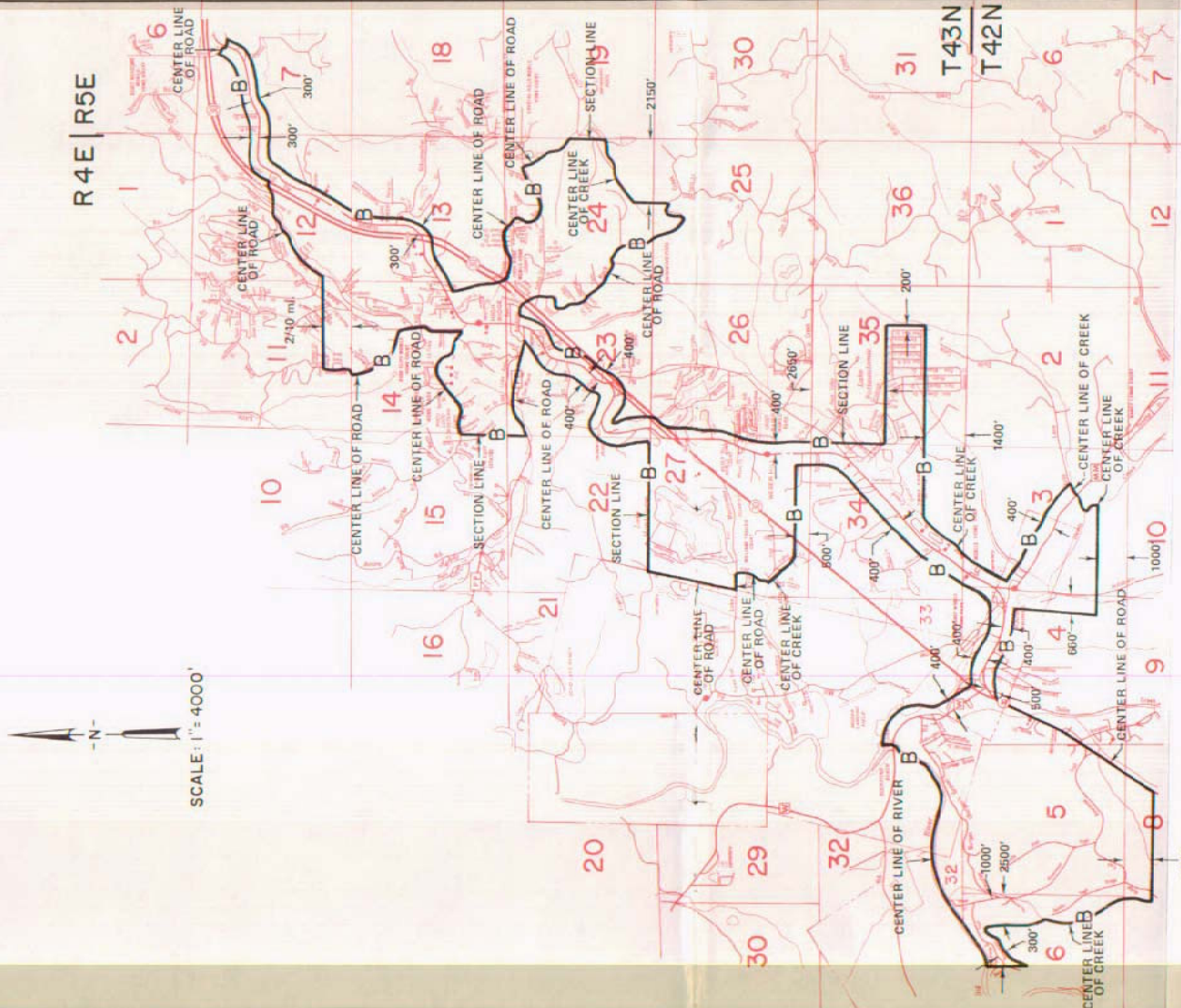
P. S. C. Mo. No. 17

High Ridge, Missouri

4th REVISED SHEET 2  
REPLACING 3rd REVISED SHEET 2

BASE RATE AREA MAP

CANCELLED - Missouri Public Service Commission - 05/01/2024 - TN-2024-0278 - JI-2024-0142



RECEIVED  
MAY 20 1977  
MISSOURI  
Public Service Commission

COUNTY

JEFFERSON

FILED  
DEC 1 1977  
Public Service Commission

By R. R. SHOCKLEY, Vice President, Missouri  
Southwestern Bell Telephone Company  
St. Louis, Missouri

Issued: May 23, 1977

Effective: DEC 1 1977



NO SUPPLEMENT TO THIS TARIFF WILL BE ISSUED EXCEPT FOR THE PURPOSE OF CANCELING THIS TARIFF.

P. S. C. Mo. No. 17

High Ridge, Missouri

EXCHANGE AREA MAP

13th REVISED SHEET 3 REPLACING 12th REVISED SHEET 3

RECEIVED

DEC 10 1996

MISSOURI Public Service Commission

PROPERTY LINE EAGLE FARMS SUBDIVISION

SECTION LINE 29

T44N T43N

ST. LOUIS JEFFERSON

T43N T42N

T42N T41N

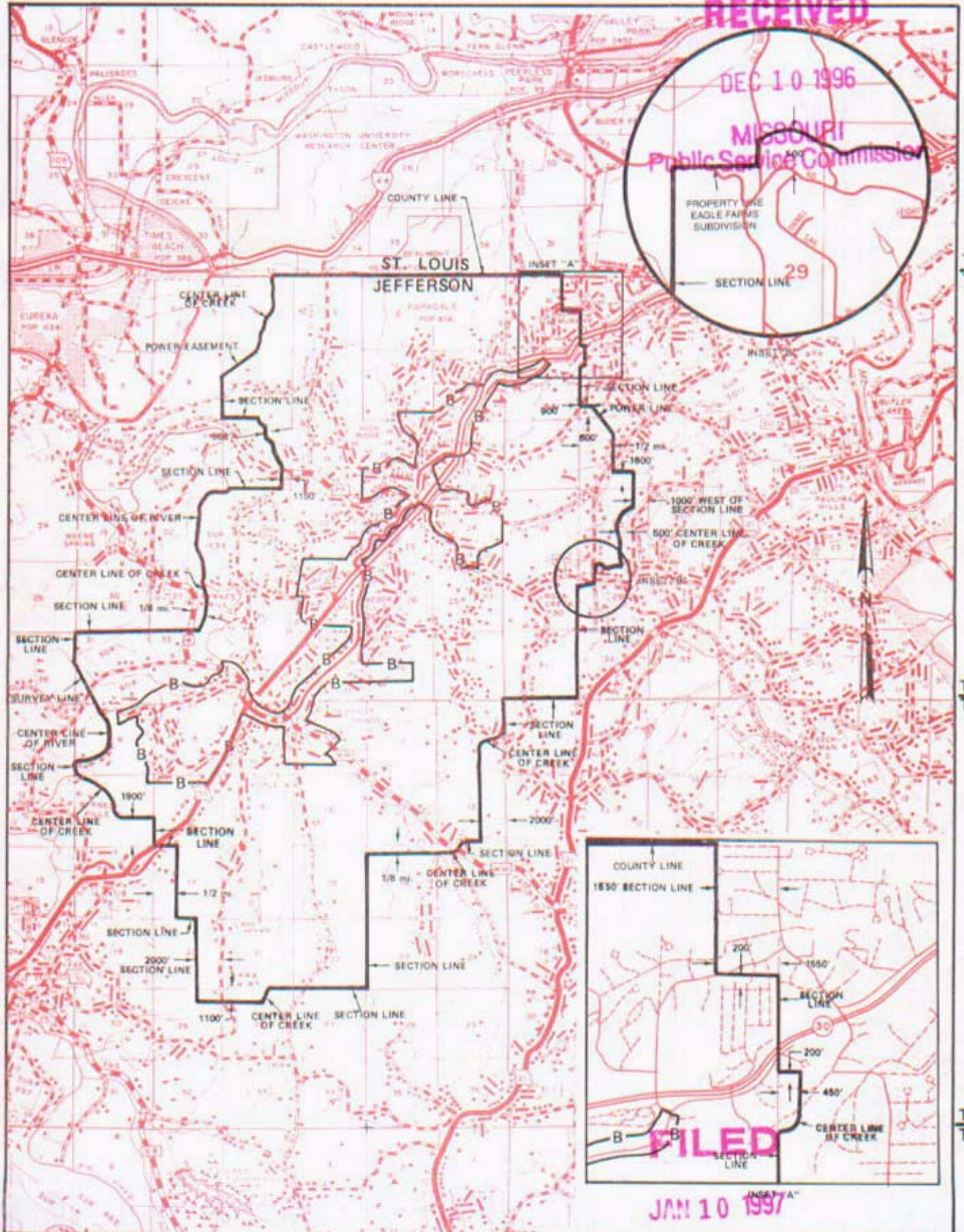
FILED JAN 10 1997

MISSOURI Public Service Commission

By KAREN JENNINGS, President - Missouri Southwestern Bell Telephone Company St. Louis, Missouri

Effective January 10, 1997

CANCELLED - Missouri Public Service Commission - 05/01/2024 - TN-2024-0278 - JI-2024-0142



R3E|R4E

R4E|R5E

R5E|R6E

Issued December 10, 1996



NO SUPPLEMENT TO THIS TARIFF WILL BE ISSUED EXCEPT FOR THE PURPOSE OF CANCELING THIS TARIFF.

P. S. C. Mo. No. 17  
EXCHANGE AREA MAP

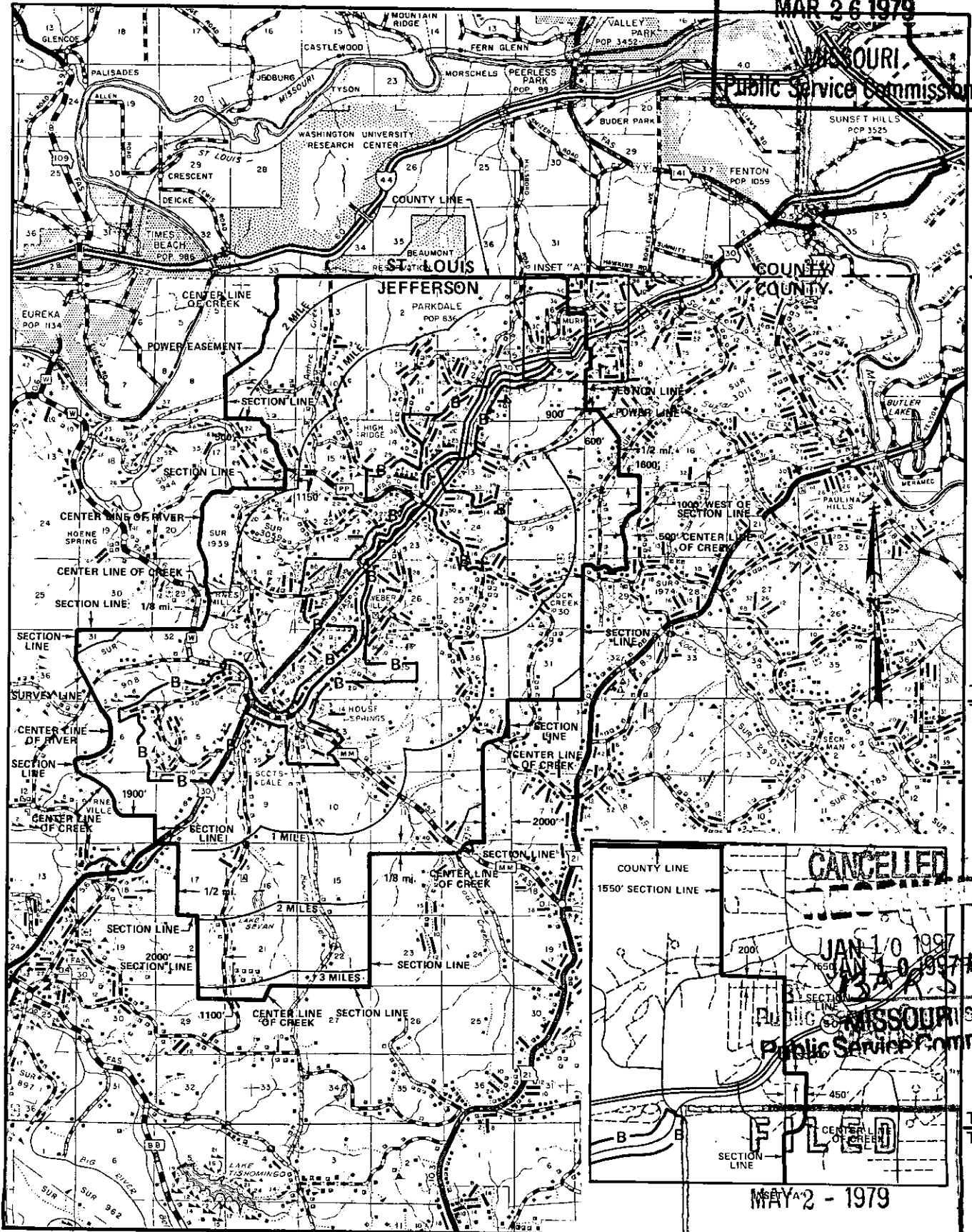
REPLACING THE REVISED SHEET 3

High Ridge Missouri

RECEIVED

MAR 26 1979

MISSOURI  
Public Service Commission



R3E|R4E

R4E|R5E

R5E|R6E

By R. R. SHOCKLEY, Vice President, Missouri  
Southwestern Bell Telephone Company

St. Louis, Missouri

CANCELED

JAN 10 1997  
JAN 10 1997 #3

MISSOURI  
Public Service Commission

FILED

MAY 2 - 1979

Public Service Commission

Issued: APRIL 2, 1979

Effective: MAY 2, 1979

NO SUPPLEMENT TO THIS TARIFF WILL BE ISSUED EXCEPT FOR THE PURPOSE OF CANCELING THIS TARIFF.

P. S. C. Mo. No. 17

Hillsboro, Missouri

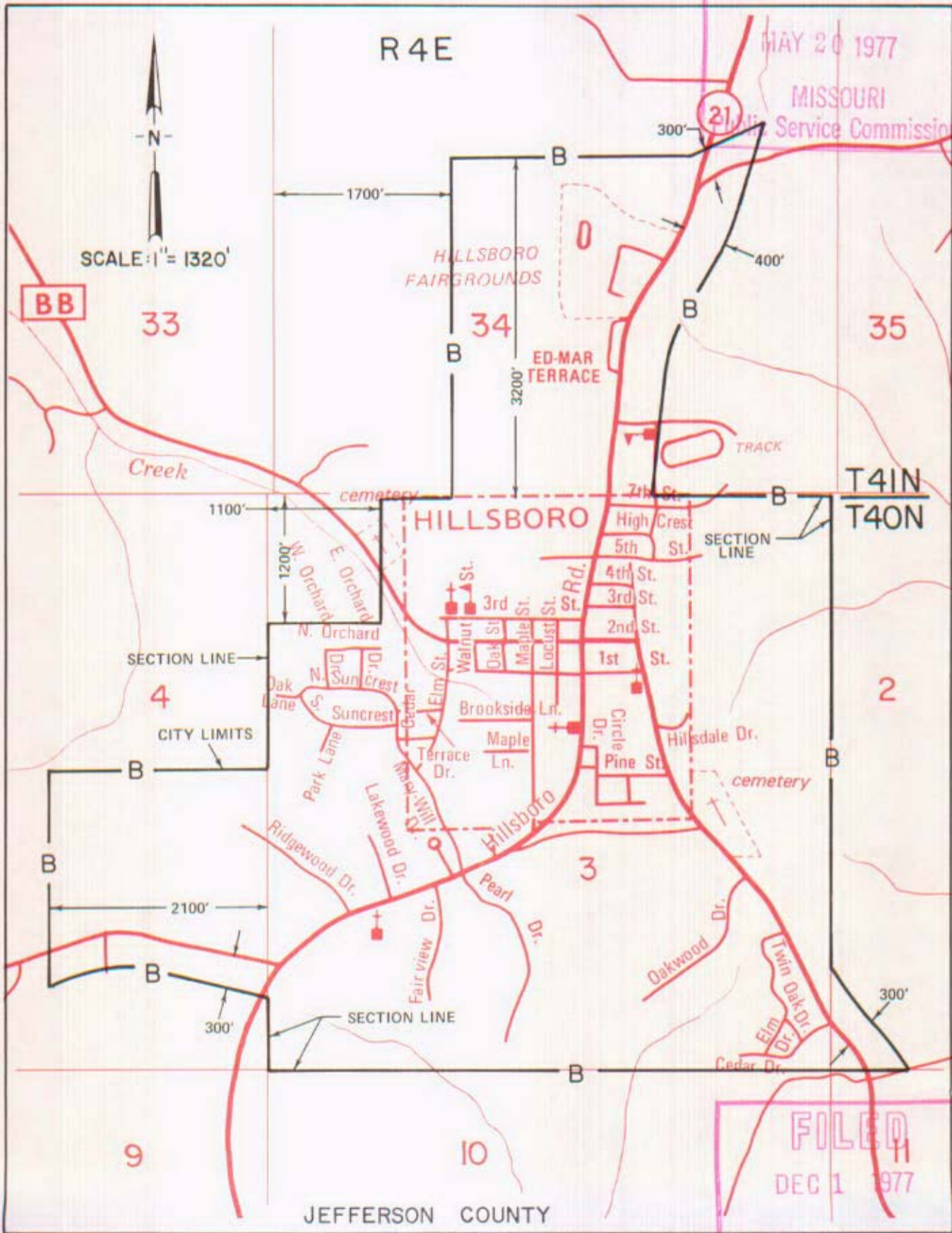
BASE RATE AREA MAP

2nd REVISED SHEET 2 REPLACING 1st REVISED SHEET 2

RECEIVED

MAY 20 1977

MISSOURI Public Service Commission



CANCELLED - Missouri Public Service Commission - 05/01/2024 - TN-2024-0278 - JI-2024-0142

FILED  
DEC 1 1977  
Public Service Commission

By R. R. SHOCKLEY, Vice President, Missouri Southwestern Bell Telephone St. Louis, Missouri

Issued: MAY 23 1977

Effective: DEC 1 1977

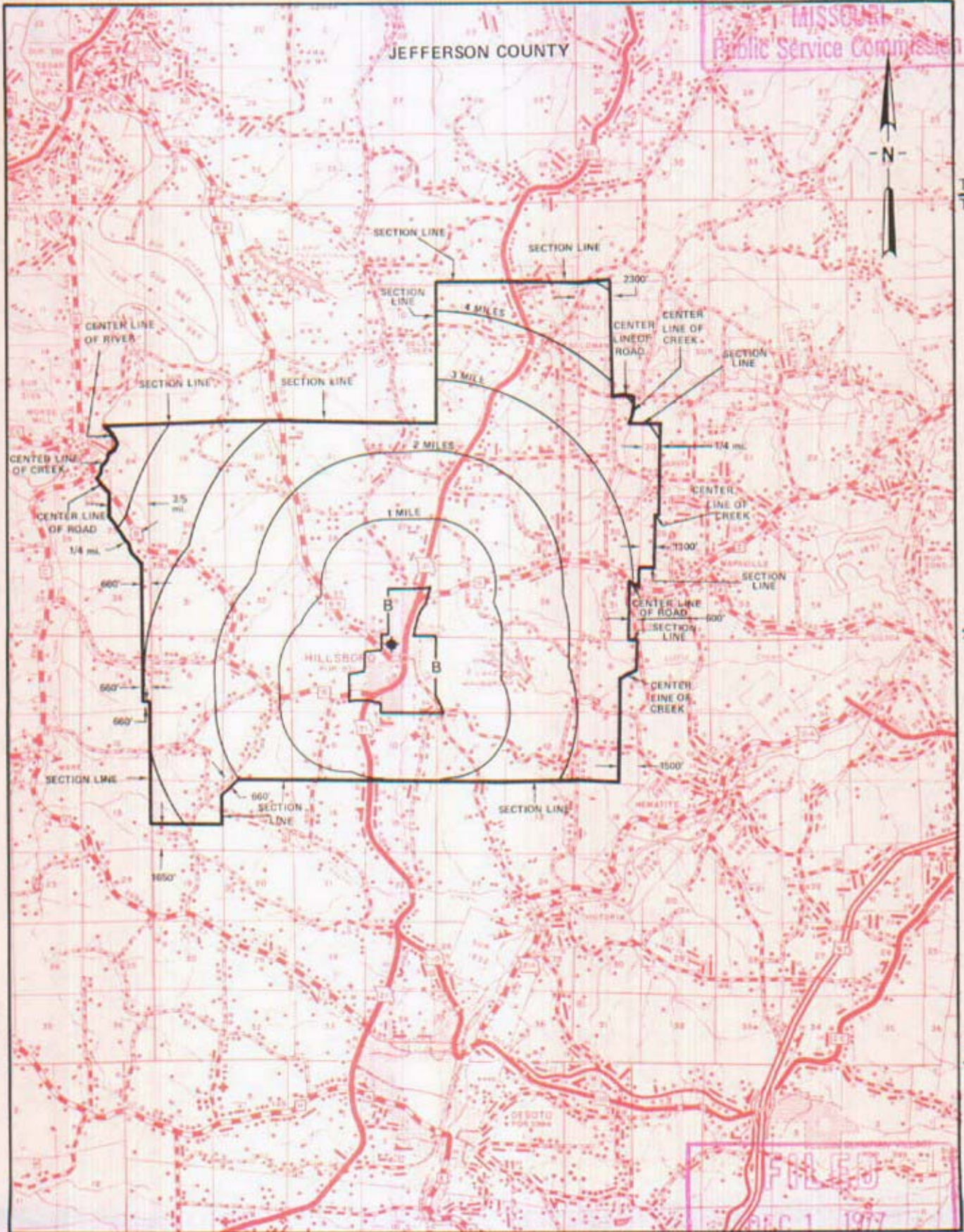


NO SUPPLEMENT TO THIS TARIFF WILL BE ISSUED EXCEPT FOR THE PURPOSE OF CANCELING THIS TARIFF.

# P. S. C. Mo. No. 17 EXCHANGE AREA MAP

**RECEIVED**  
Hillsboro, Missouri  
5th REVISED SHEET 3  
REPLACING 4th REVISED SHEET 3  
MAY 20 1977

MISSOURI  
Public Service Commission



CANCELLED - Missouri Public Service Commission - 05/01/2024 - TN-2024-0278 - JI-2024-0142

By R. R. SHOCKLEY, Vice President, Missouri  
Southwestern Bell Telephone  
St. Louis, Missouri

**FILED**  
MAY 1 1977  
Public Service Commission

Issued: MAY 23 1977

Effective: \_\_\_\_\_ 1977

SBC PSC MO #17  
Holcomb, Missouri  
1<sup>st</sup> Revised Sheet 2  
Replacing Original Sheet 2

# Non-Scannable Map

(Is viewable in the Data Center  
200 Madison Street, 1<sup>st</sup> Floor  
Jefferson City MO)



NO SUPPLEMENT TO THIS TARIFF WILL BE ISSUED EXCEPT FOR THE PURPOSE OF CANCELING THIS TARIFF.

P. S. C. Mo. No. 17

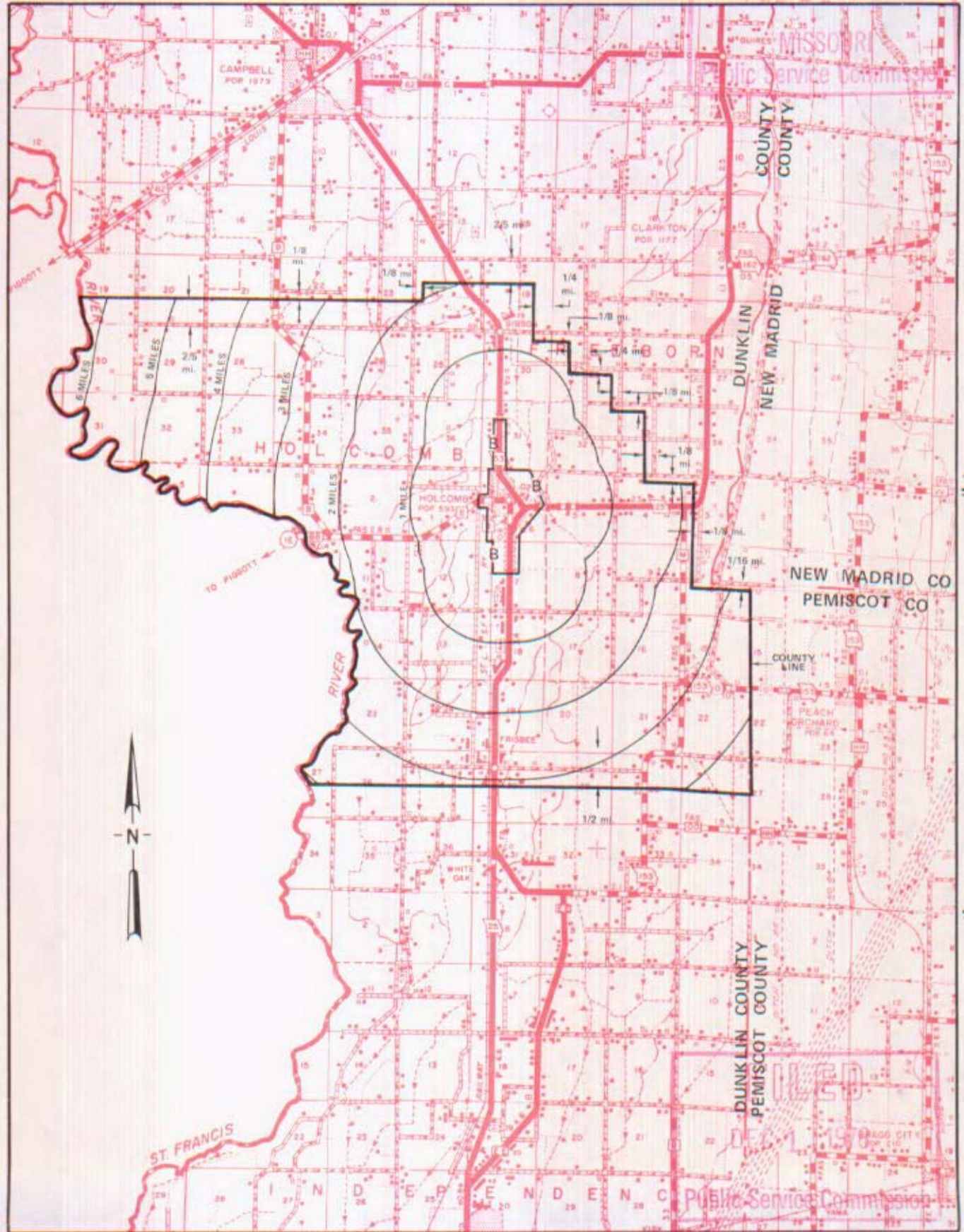
Holcomb, Missouri

EXCHANGE AREA MAP

5th REVISED SHEET 3 REPLACING 4th REVISED SHEET 3

RECEIVED FEB 14 1977

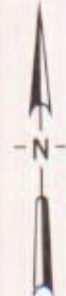
CANCELLED - Missouri Public Service Commission - 05/01/2024 - TN-2024-0278 - JI-2024-0142



T22N  
T21N

T21N  
T20N

T20N  
T19N



R8E | R9E

R9E | R10E

R10E | R11E

By R. R. SHOCKLEY, Vice President, Missouri Southwestern Bell Telephone Company St. Louis, Missouri

Issued: February 15, 1977

Effective: DEC 1 1978

SBC PSC MO #17  
Hornersville, Missouri

Original Sheet 2

Replacing Southeast Missouri Telephone Company

P.S.C. Mo. No. 2

Original Sheet 2

Non-Scannable  
Map

(Is viewable in the Data Center  
200 Madison Street, 1<sup>st</sup> Floor  
Jefferson City MO)



NO SUPPLEMENT TO THIS TARIFF WILL BE ISSUED EXCEPT FOR THE PURPOSE OF CANCELING THIS TARIFF.

P. S. C. Mo. No. 17

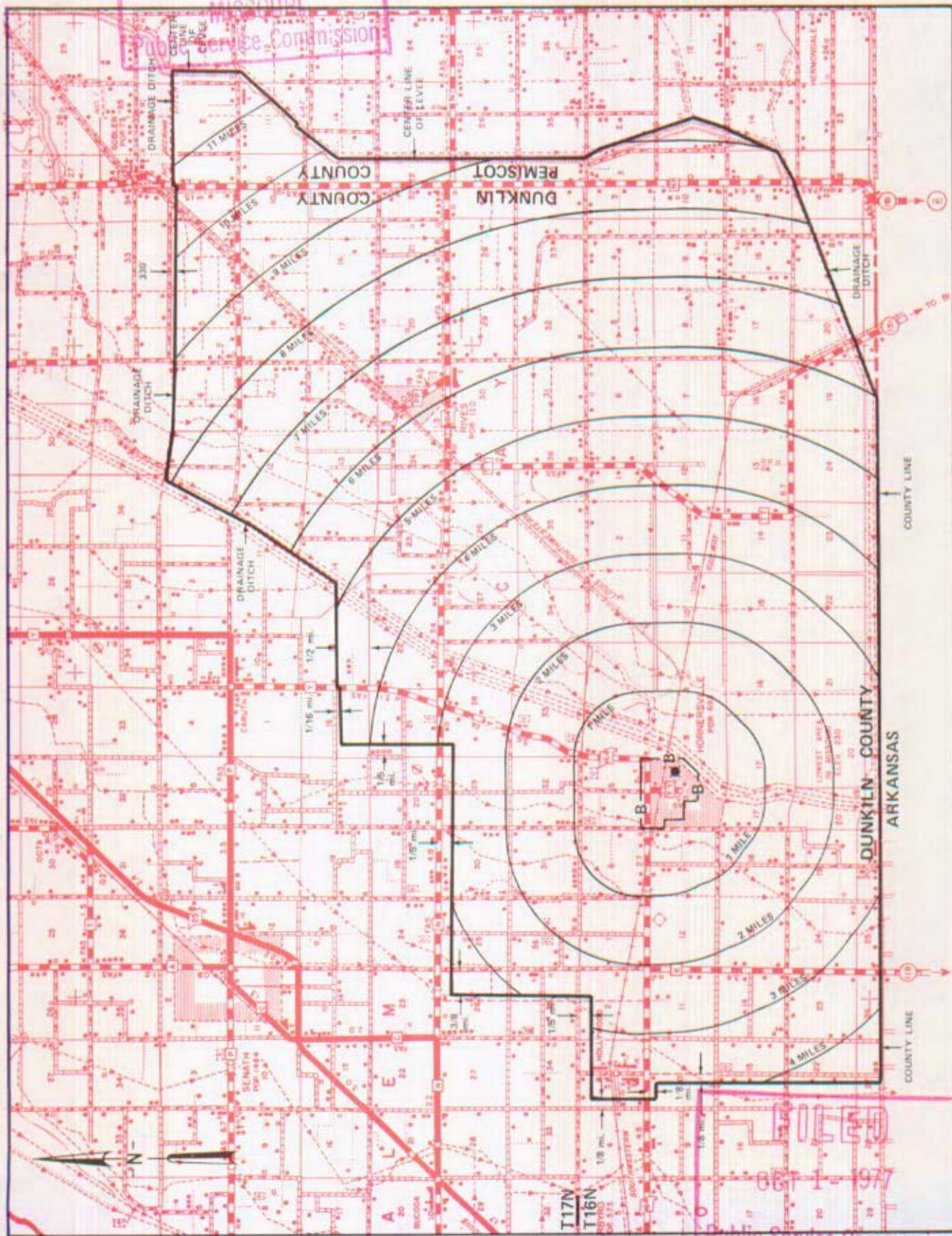
Hornersville, Missouri

7th REVISED SHEET 3  
REPLACING 6th REVISED SHEET 3

# EXCHANGE AREA MAP

APR 14 1977

CANCELLED - Missouri Public Service Commission - 05/01/2024 - TN-2024-0278 - JI-2024-0142



RECEIVED  
Missouri Public Service Commission  
APR 14 1977

OCT 1 1977  
Public Service Commission

By R. R. SHOCKLEY, Vice President, Missouri  
Southwestern Bell Telephone Company  
St. Louis, Missouri

Issued: April 15, 1977

Effective: OCT 1 1977