

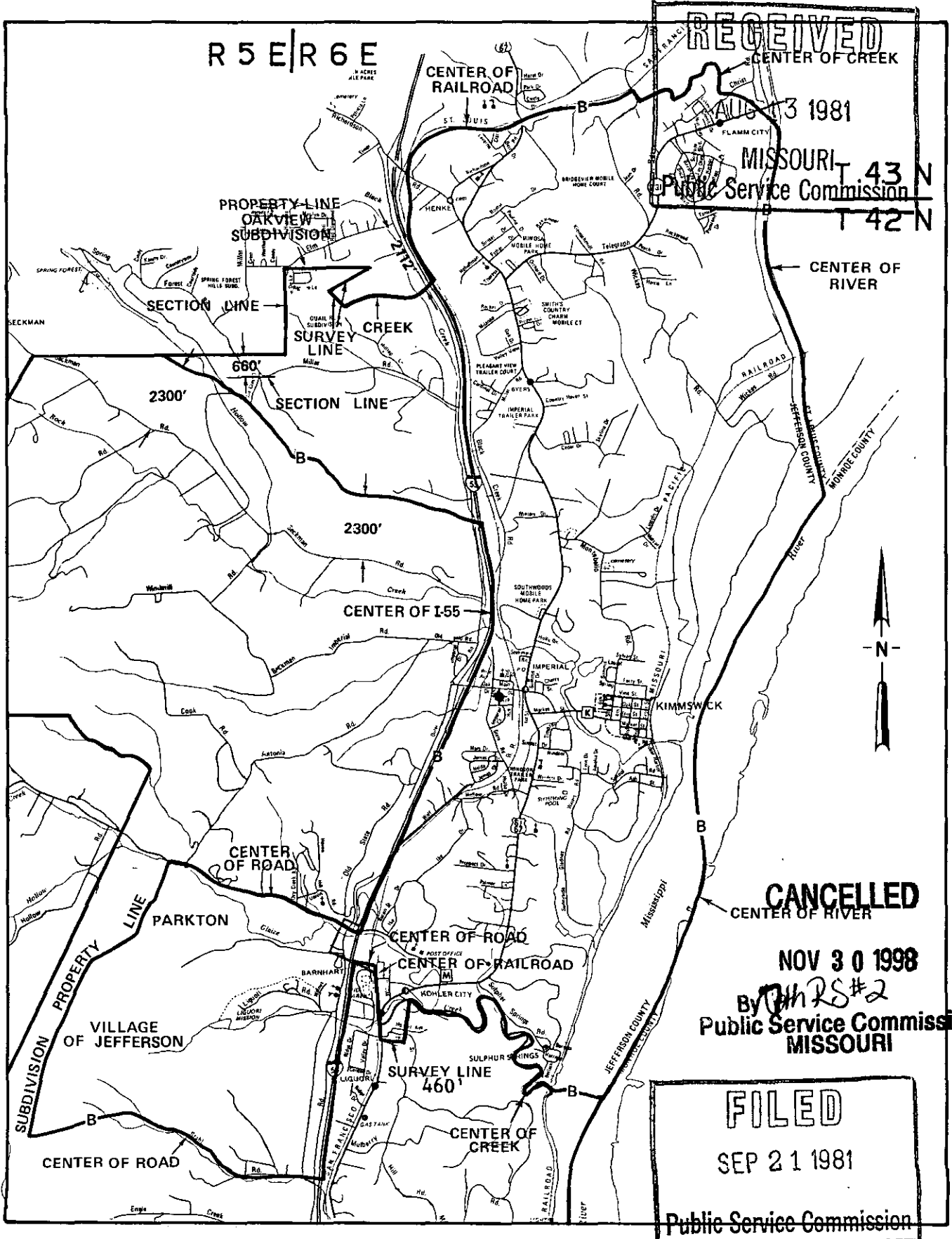
NO SUPPLEMENT TO THIS TARIFF WILL BE ISSUED EXCEPT FOR THE PURPOSE OF CANCELING THIS TARIFF.

P. S. C. Mo. No. 17

Imperial, Missouri

BASE RATE AREA MAP

6th REVISED SHEET 2 REPLACING 5th REVISED SHEET 2



**RECEIVED**  
 CENTER OF CREEK  
 AUG 13 1981  
 MISSOURI T 43 N  
 Public Service Commission T 42 N

**CANCELLED**  
 CENTER OF RIVER

NOV 30 1998  
 By *PHRS#2*  
 Public Service Commission  
 MISSOURI

**FILED**  
 SEP 21 1981  
 Public Service Commission

AUG 21 1981

By R. R. SHOCKLEY, Vice President, Missouri

SEP 21 1981

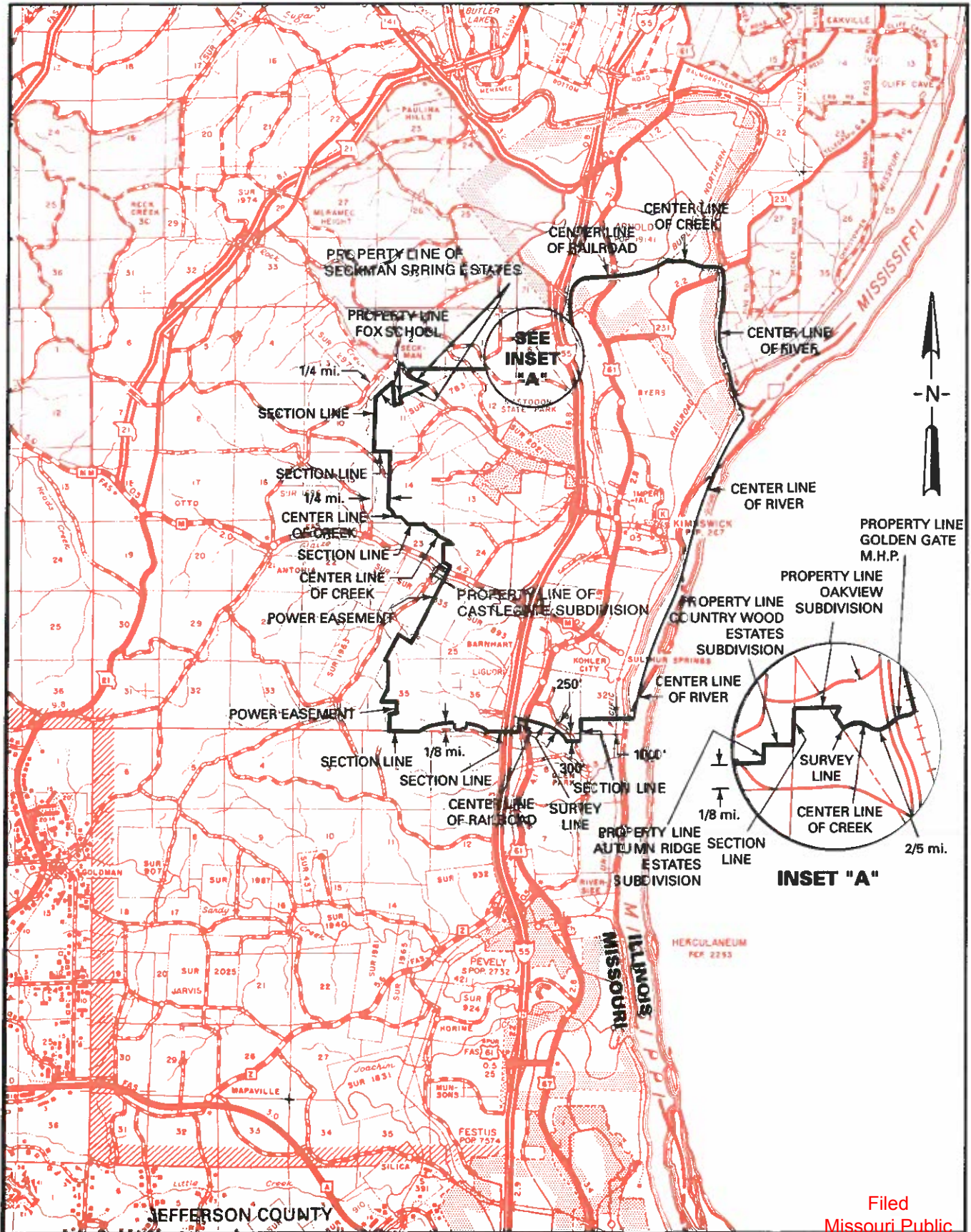
Issued: \_\_\_\_\_

Southwestern Bell Telephone  
St. Louis, Missouri

Effective: \_\_\_\_\_



### EXCHANGE AREA MAP



T43N  
T42N

T42N  
T41N

T41N  
T40N

R4E | R5E

R5E | R6E

Issued: November 17, 2008

By DAVID NICHOLS, President - Missouri  
St. Louis, Missouri

Filed  
Missouri Public  
Service Commission  
JI-2009-0374  
Effective: December 17, 2008

CANCELLED - Missouri Public Service Commission - 05/01/2024 - TN-2024-0278 - JI-2024-0142

NO SUPPLEMENT TO THIS TARIFF WILL BE ISSUED EXCEPT FOR THE PURPOSE OF CANCELING THIS TARIFF.

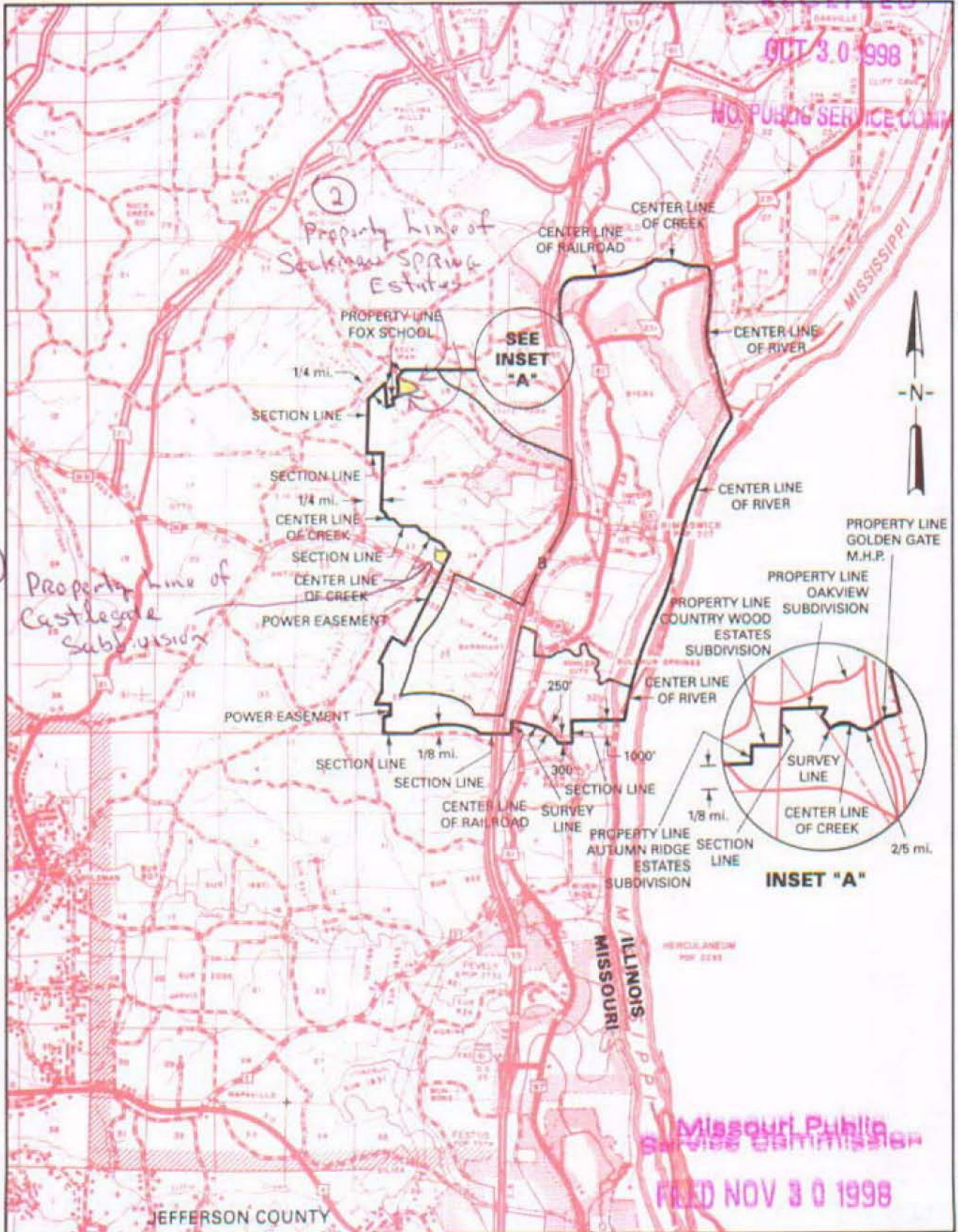
P. S. C. Mo. No. 17

Imperial, Missouri  
Should be 6th Revised Sheet 3

REPLACING 4th REVISED SHEET 3  
Replacing 5th Revised Sheet 3

### EXCHANGE AREA MAP

RECEIVED  
OCT 30 1998  
MO. PUBLIC SERVICE COM.



Missouri Public Service Commission  
FILED NOV 30 1998

Cancelled  
December 17, 2008  
Missouri Public  
Service Commission  
JI-2009-0374

Priscilla Hill-Ardoin R5E | R6E

By HORACE WILKING, JR. President - Missouri  
Southwestern Bell Telephone Company

NOV 30 1998

OCT 30 1998

Effective: September 15, 1996

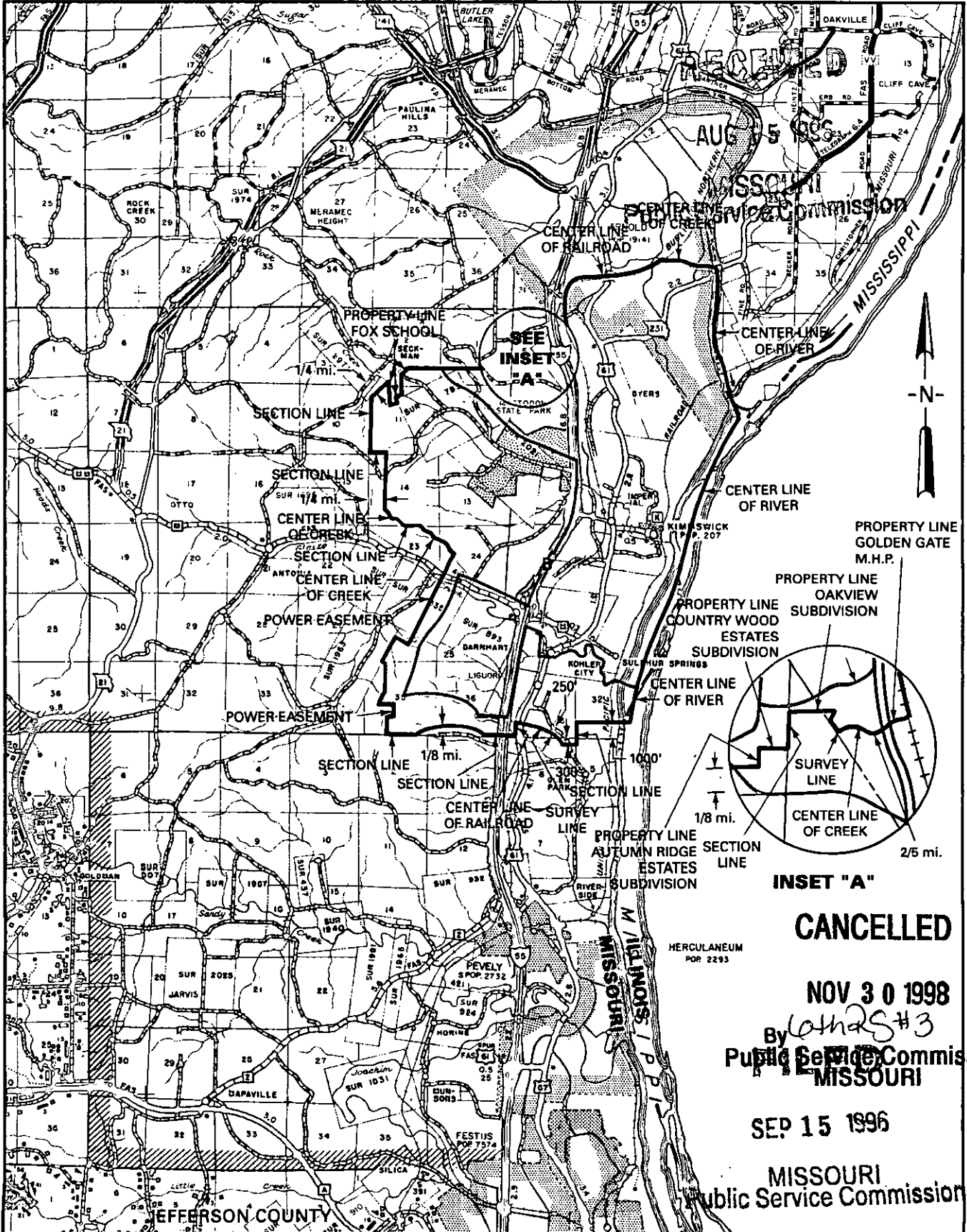
NO SUPPLEMENT TO THIS TARIFF WILL BE ISSUED EXCEPT FOR THE PURPOSE OF CANCELING THIS TARIFF.

P. S. C. Mo. No. 17

Imperial, Missouri

5th REVISED SHEET 3  
REPLACING 4th REVISED SHEET 3

### EXCHANGE AREA MAP



T43N  
T42N

T42N  
T41N

T41N  
T40N

R4E | R5E

R5E | R6E

By HORACE WILKINS, JR. President - Missouri  
Southwestern Bell Telephone Company  
St. Louis, Missouri

Issued: August 15, 1996

Effective: September 15, 1996

**CANCELLED**

NOV 30 1998

By [Signature] #3  
Public Service Commission  
MISSOURI

SEP 15 1996

MISSOURI  
Public Service Commission

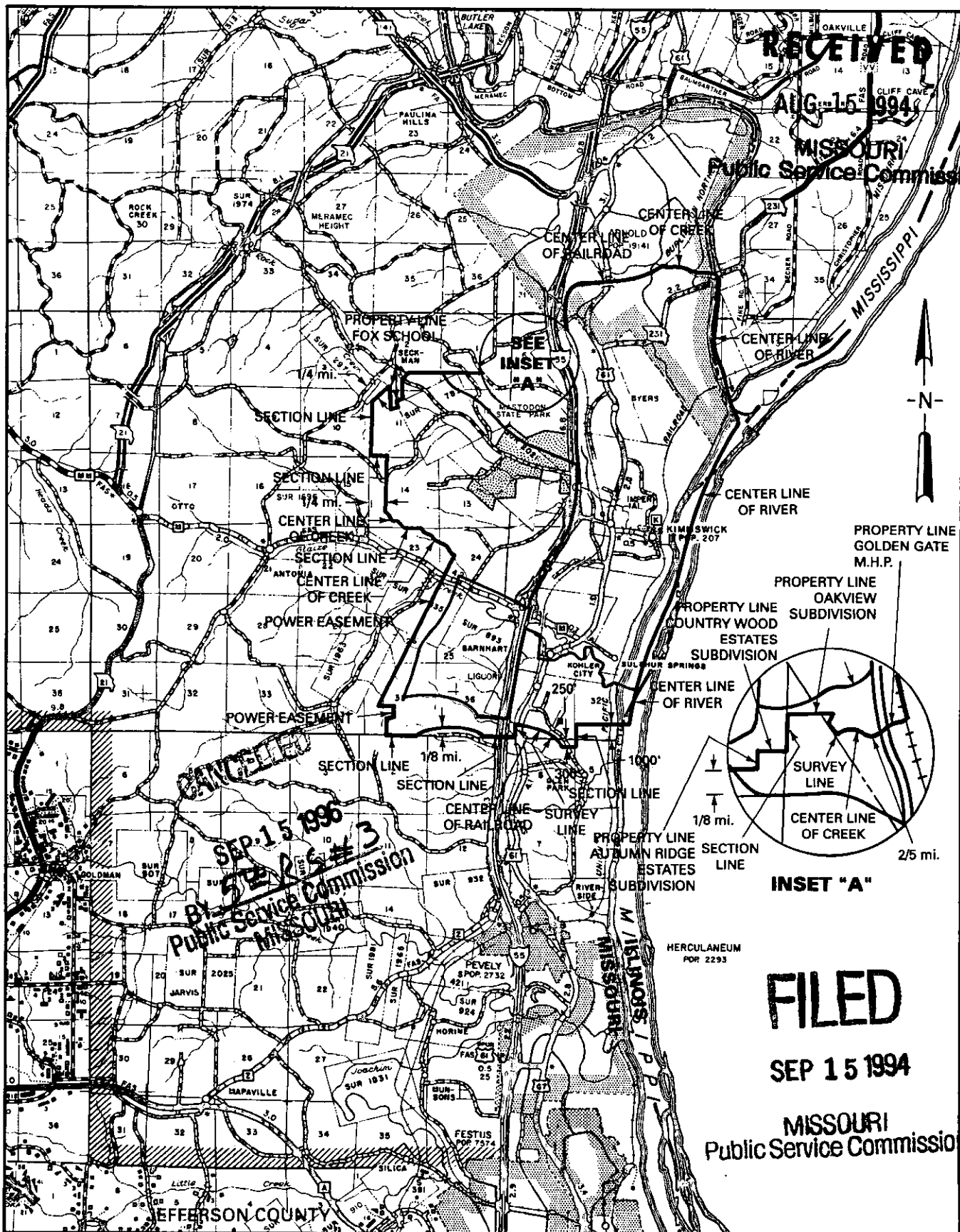
NO SUPPLEMENT TO THIS TARIFF WILL BE ISSUED EXCEPT FOR THE PURPOSE OF CANCELING THIS TARIFF.

P. S. C. Mo. No. 17

Imperial, Missouri

4th REVISED SHEET 3  
REPLACING 3rd REVISED SHEET 3

### EXCHANGE AREA MAP



**RECEIVED**  
**AUG 15 1994**  
**MISSOURI**  
**Public Service Commission**

**CANCELLED**  
**SEP 15 1996**  
**By P.S.C. #3**  
**MISSOURI**  
**Public Service Commission**

**INSET "A"**  
**FILED**  
**SEP 15 1994**  
**MISSOURI**  
**Public Service Commission**

R4E | R5E

R5E | R6E

T43N  
T42N

T42N  
T41N

T41N  
T40N

By M. H. SCHULTEIS, Executive Director - External Affairs  
 Southwestern Bell Telephone Company  
 St. Louis, Missouri

Issued: August 15, 1994

Effective: September 15, 1994

INDEPENDENCE

SEE

KANSAS CITY DISTRICT EXCHANGE

under Kansas City

Effective July 1, 1938

No supplement to this tariff will be issued except for the purpose of canceling this tariff.

MISSOURI PORTION-HAMBURG  
IOWA, EXCHANGE  
21st Revised Sheet 1  
Replacing 20th Revised Sheet 1

SOUTHWESTERN BELL TELEPHONE COMPANY  
LOCAL EXCHANGE TARIFF

Missouri Public  
Service Commission

RECD NOV 12 1998

(RT)

Missouri Public  
Service Commission

FILED DEC 30 1998

(RT)

Issued: NOV 13 1998

Effective: 

DEC 30 1998

CANCELLED  
May 1, 2014  
Missouri Public  
Service Commission  
JL-2014-0379

By PRISCILLA HILL-ARDOIN, President-Missouri  
Southwestern Bell Telephone Company  
St. Louis, Missouri



No supplement to this tariff will be issued except for the purpose of canceling this tariff.

MISSOURI PORTION-HAMBURG, IOWA, EXCHANGE  
20th Revised Sheet 1  
Replacing 19th Revised Sheet 1

**RECEIVED**

SOUTHWESTERN BELL TELEPHONE COMPANY  
LOCAL EXCHANGE TARIFF

**JAN 17 1995**

1.1 GENERAL

This Tariff is governed, except as otherwise specified herein, by all General Tariffs of the Southwestern Bell Telephone Company on file in the State of Missouri, which are hereby made a part of this Tariff. Unless otherwise specified, the charges quoted in this Tariff or in any other Missouri Tariff are for periods of one month, are payable monthly in advance and entitle the customer to Exchange Telephone Service within the Hamburg Exchange Area.

**MO. PUBLIC SERVICE COMM.**

This exchange area includes, in addition to the Missouri portion, certain territory in the State of Iowa comprising the cities of Hamburg, Riverton and vicinities, as shown on the Exchange Area Map for this exchange.

1.2 RATES

**CANCELLED**

1.2.1 Within the Missouri portion of the exchange area:

1. Monthly Rates

**DEC 30 1998**  
By *2154RS #1*  
Public Service Commission  
**MISSOURI**  
Allowance

	<u>Monthly Rate</u>	<u>Allowance</u>
<b>Business</b>		
One-Party Flat . . . . . (CR)	\$23.70	N/A
Option 1 (Measured) . . . . . ↓	17.15	0
Option 2 (Measured) . . . . . (CR)	22.70	6 Hrs
<b>Residence</b>		
One-Party Flat . . . . .	11.45	N/A
Basic (Measured) . . . . .	7.50	0
Budget (Measured) . . . . .	9.25	\$3.00

(RT)  
(RT)

a. The following exchange usage rates apply in addition to the Residence Measured Service Line rates:

<u>Call Area</u>	<u>Distance in Miles</u>	<u>Dial Station-to-Station</u>	
		<u>Initial Minute Rate</u>	<u>Each Additional Minute Rate</u>
A	0-10	\$.05	\$.01
B	11-15	.07	.013
C	16-20	.09	.015
D	Over 20	.11	.017

b. Business exchange usage rates - \$.03 per minute.

**FILED**

Issued: **JAN 17 1995**

Effective: **FEB 17 1995**

**FEB 17 1995**

By HORACE WILKINS, JR., President-Missouri  
Southwestern Bell Telephone Company  
St. Louis, Missouri

MISSOURI  
Public Service Commission

No supplement to this tariff will be issued except for the purpose of canceling this tariff.

MISSOURI PORTION-HAMBURG, IOWA, EXCHANGE  
19th Revised Sheet 1  
Replacing 18th Revised Sheet 1

SOUTHWESTERN BELL TELEPHONE COMPANY  
LOCAL EXCHANGE TARIFF

**RECEIVED**

1.1 GENERAL

This Tariff is governed, except as otherwise specified herein by all other Tariffs of the Southwestern Bell Telephone Company on file in the State of Missouri, which are hereby made a part of this Tariff. <sup>OCT 25 1993</sup> <sup>MISSOURI Public Service Commission</sup> Otherwise specified, the charges quoted in this Tariff or in any other Missouri Tariff are for periods of one month, are payable monthly in advance and entitle the customer to Exchange Telephone Service within the Hamburg Exchange Area.

This exchange area includes, in addition to the Missouri portion, certain territory in the State of Iowa comprising the cities of Hamburg, Riverton and vicinities, as shown on the Exchange Area Map for this exchange.

1.2 RATES

**CANCELLED**

1.2.1 Within the Missouri portion of the exchange area:

1. Monthly Rates

FEB 17 1995  
BY 204 R.S. #1  
MISSOURI Public Service Commission

Monthly Rate

(AT)	Business			
(CT)	One-Party Flat . . . . .	\$28.95		N/A
(AT)	Option 1 (Measured) . . . . .	(NR) 21.00		0
(AT)	Option 2 (Measured) . . . . .	(NR) 27.75		6 Hrs
(MT)	Public Access Line . . . . .	28.95		0
(MT)	Public Carrier Access Line . . . . .	23.00		0
(AT)	Residence			
(CT)	One-Party Flat . . . . .	11.45		N/A
(RT)				
(AT)	Basic (Measured) . . . . .	(NR) 7.50		0
(AT)	Budget (Measured) . . . . .	(NR) 9.25	(AT)(NR) \$3.00	

(AT) a. The following exchange usage rates apply in addition to the Residence Measured Service Line rates:

Call Area	Distance in Miles	Dial Station-to-Station	
		Initial Minute Rate	Each Additional Minute Rate
A	0-10	(NR) \$.05	(NR) \$.01
B	11-15	.07	.013
C	16-20	.09	.015
D	Over 20	(NR) .11	(NR) .017

(AT)(NR) b. Business exchange usage rates - \$.03 per minute

**FILED**  
NOV 26 1993

Issued: **OCT 26 1993**

Effective: **NOV 26 1993**

MISSOURI

By M. H. SCHULTEIS, Division Manager-Regulatory & Industry Relations  
Southwestern Bell Telephone Company  
St. Louis, Missouri

Public Service Commission

No supplement to this tariff will be issued except for the purpose of canceling this tariff.

MISSOURI PORTION-HAMBURG  
IOWA, EXCHANGE  
1st Revised Sheet 1.01  
Replacing Original Sheet 1.01

SOUTHWESTERN BELL TELEPHONE COMPANY  
LOCAL EXCHANGE TARIFF

Missouri Public  
Service Commission

RECD NOV 12 1998

(RT)

(RT)

Missouri Public  
Service Commission

FILED DEC 30 1998

Issued: NOV 13 1998

Effective:

DEC 30 1998

CANCELLED  
May 1, 2014  
Missouri Public  
Service Commission  
.II-2014-0379

By PRISCILLA HILL-ARDOIN, President-Missouri  
Southwestern Bell Telephone Company  
St. Louis, Missouri

No supplement to this tariff will be issued except for the purpose of canceling this tariff.

MISSOURI PORTION-HAMBURG,  
IOWA, EXCHANGE  
Original Sheet 1.01

SOUTHWESTERN BELL TELEPHONE COMPANY  
LOCAL EXCHANGE TARIFF

**RECEIVED**

1.2 RATES (Continued)

OCT 25 1993

(MT)

2. Coin Rates

MISSOURI  
Public Service Commission

(MT)

Local messages originating at semi-public and public telephones are charged at \$.35 each.

(RT)

**CANCELLED**

DEC 30 1998  
By *LSRS#1.01*  
Public Service Commission  
MISSOURI

**FILED**

NOV 26 1993

MISSOURI  
Public Service Commission

Issued:

OCT 26 1993

Effective:

NOV 26 1993

By M. H. SCHULTEIS, Division Manager-Regulatory & Industry Relations  
Southwestern Bell Telephone Company  
St. Louis, Missouri