

NO SUPPLEMENT TO THIS TARIFF WILL BE ISSUED EXCEPT FOR THE PURPOSE OF CANCELING THIS TARIFF.

P. S. C. Mo. No. 17
BASE RATE AREA MAP

Jackson, Missouri

2nd REVISED SHEET 2
REPLACING 1st REVISED SHEET 2

The
City of
JACKSON
1978
by Jim Beattie

Prepared from maps submitted by Southwest Missouri
Regional Planning Commission urban planning grant
Project no. CPA-MO-07-34-1004 / SA-294

RECEIVED
APR 19 1979
MISSOURI
Public Service Commission

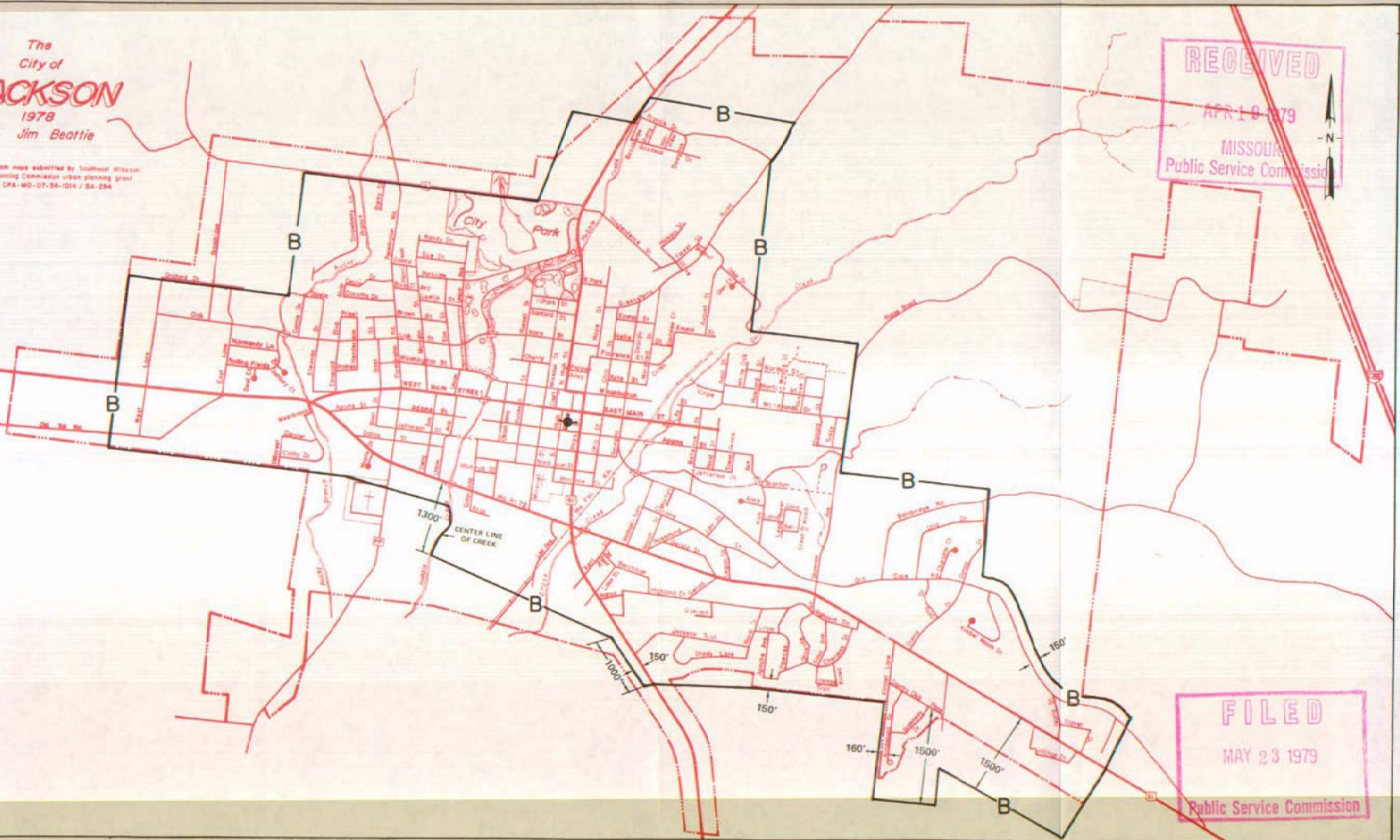
FILED
MAY 23 1979
Public Service Commission

CANCELLED - Missouri Public Service Commission - 05/01/2024 - TN-2024-0278 - JI-2024-0142

By R. R. SHOCKLEY, Vice President, Missouri
Southwestern Bell Telephone Company
St. Louis, Missouri

Issued: APRIL 23, 1979

Effective: MAY 23, 1979



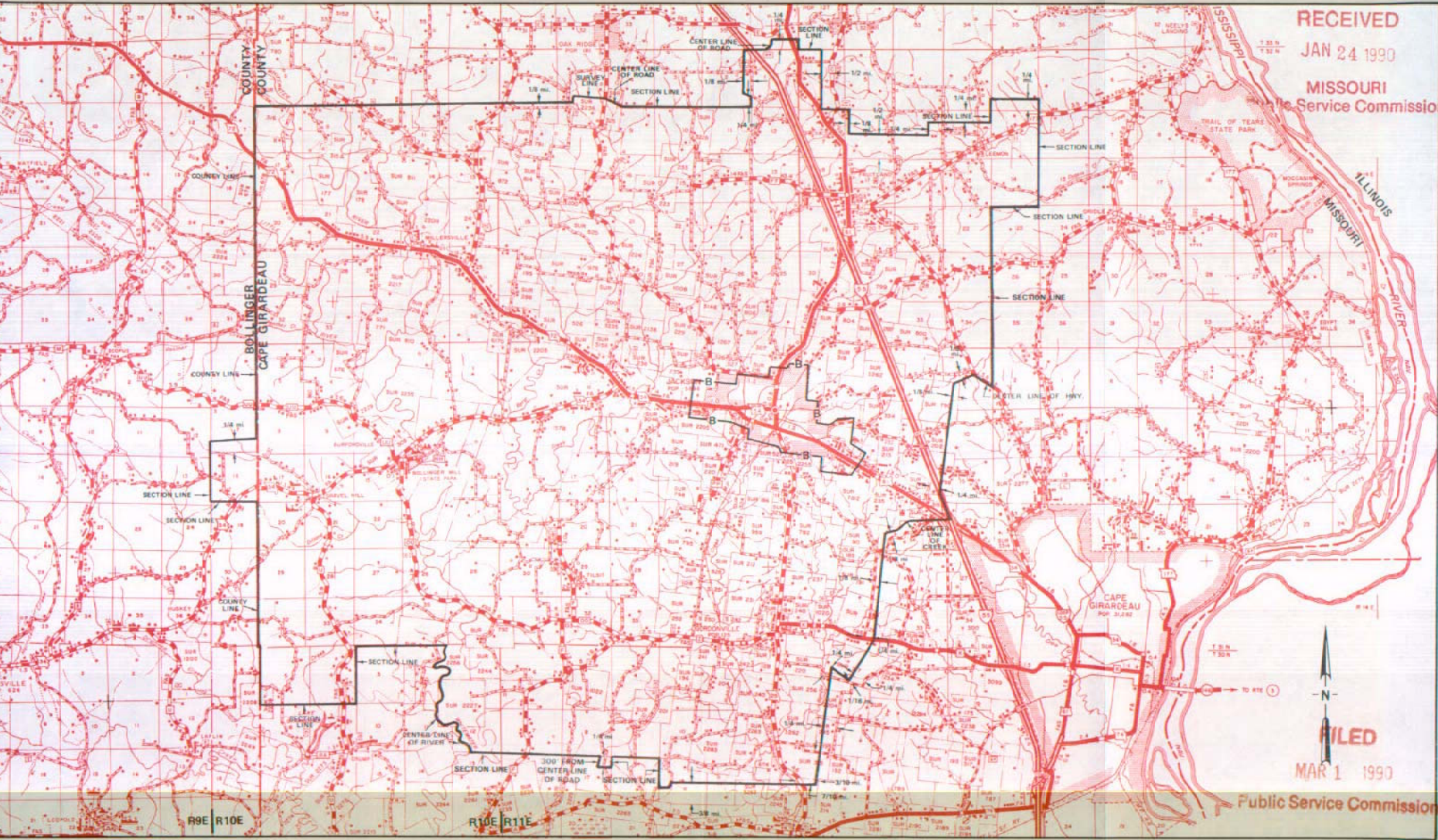
NO SUPPLEMENT TO THIS TARIFF WILL BE ISSUED EXCEPT FOR THE PURPOSE OF CANCELING THIS TARIFF.

P. S. C. Mo. No. 17
EXCHANGE AREA MAP

Jackson, Missouri
9th REVISED SHEET 3
REPLACING 8th REVISED SHEET 3

RECEIVED
JAN 24 1990
MISSOURI
Public Service Commission

CANCELLED - Missouri Public Service Commission - 05/01/2024 - TN-2024-0278 - JI-2024-0142



T32N
T32N
T31N
T31N
T30N

By R. D. BARRON, President, Missouri Division
Southwestern Bell Telephone Company
St. Louis, Missouri

Issued: January 29, 1990

R11E | R12E

R12E | R13E

R13E | R14E

Effective: March 1, 1990

No supplement to this tariff will be issued except for the purpose of canceling this tariff.

P.S.C. Mo. No. 17

JAMES RIVER, MISSOURI
2ND REVISED SHEET 3
REPLACING 1ST REVISED SHEET 3

This exchange is included in the Nixa exchange.
For all rates and charges refer to the Nixa exchange

RECEIVED
DEC 20 1961
MISSOURI
Public Service Comm.

CANCELLED - Missouri Public Service Commission - 05/01/2024 - TN-2024-0278 - JI-2024-0142

FILED

JAN 19 1962

PUBLIC SERVICE COMMISSION

Issued: December 19, 1961

Effective: January 19, 1962

By F. B. HUNT, Vice President and General Manager
Southwestern Bell Telephone Company
St. Louis, Missouri

SBC PSC MO #17
Jasper, Missouri
1st Revised Sheet 2
Replacing Original Sheet 2

Non-Scannable Map

(Is viewable in the Data Center
200 Madison Street, 1st Floor
Jefferson City MO)

NO SUPPLEMENT TO THIS TARIFF WILL BE ISSUED EXCEPT FOR THE PURPOSE OF CANCELING THIS TARIFF.

P. S. C. Mo. No. 17

EXCHANGE AREA MAP

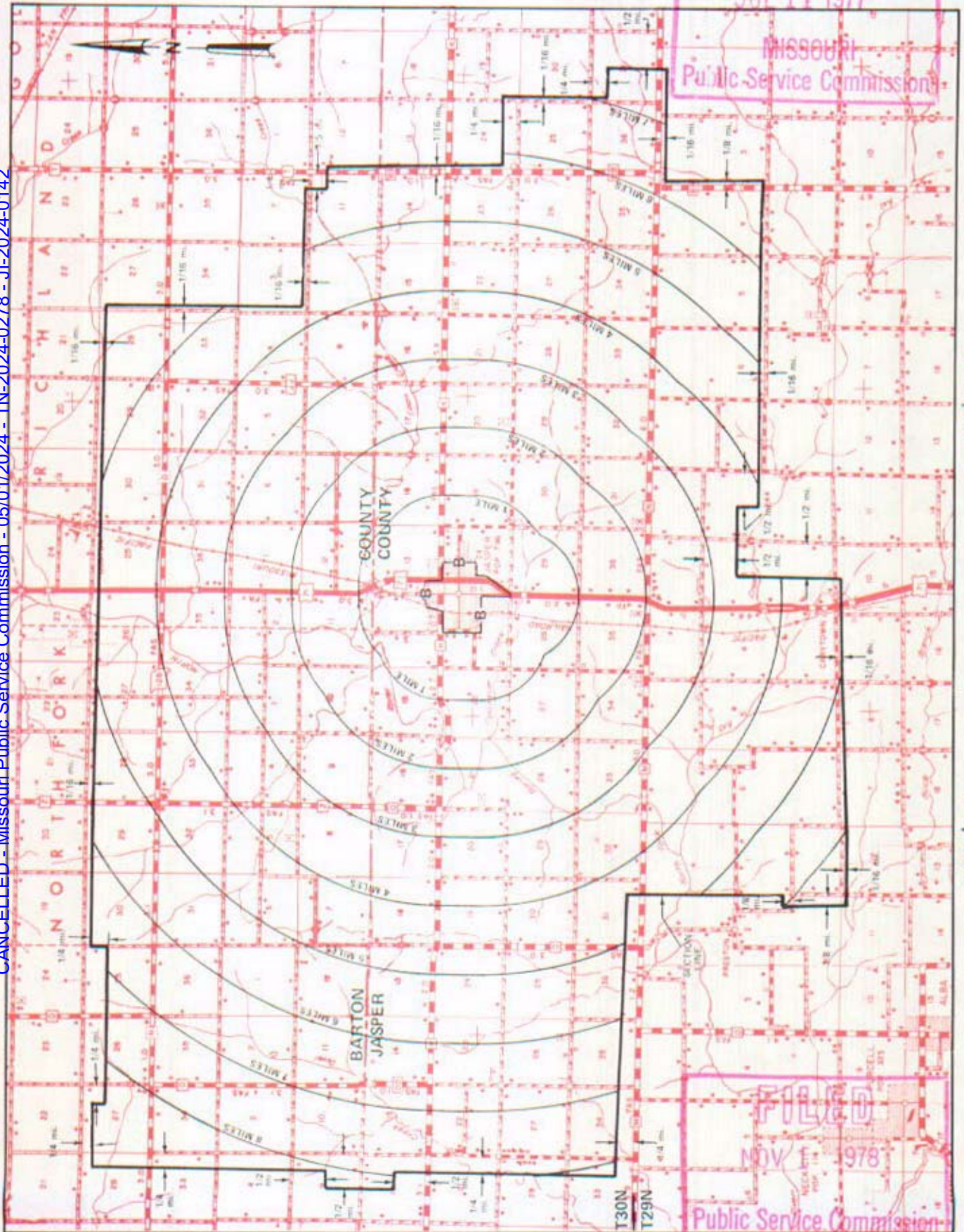
Jasper, Missouri

RECEIVED
6th REVISED SHEET 3
REPLACING 5th REVISED SHEET 3

JUL 11 1977

MISSOURI
Public Service Commission

CANCELLED - Missouri Public Service Commission - 05/01/2024 - TN-2024-0278 - JI-2024-0142



T31N
T30N

By R. R. SHOCKLEY, Vice President, Missouri
Southwestern Bell Telephone Company

NOV 1 - 1978

FILED
NOV 1 1978
Public Service Commission

SBC Missouri
Base Rate Area Map
Joplin
PSC MO No. 17
3rd Revised Sheet 2

Non-Scannable Map

(Viewable in the Data Center
located at:
200 Madison Street, 1st Floor
Jefferson City MO)

NO SUPPLEMENT TO THIS TARIFF WILL BE ISSUED EXCEPT FOR THE PURPOSE OF CANCELING THIS TARIFF.

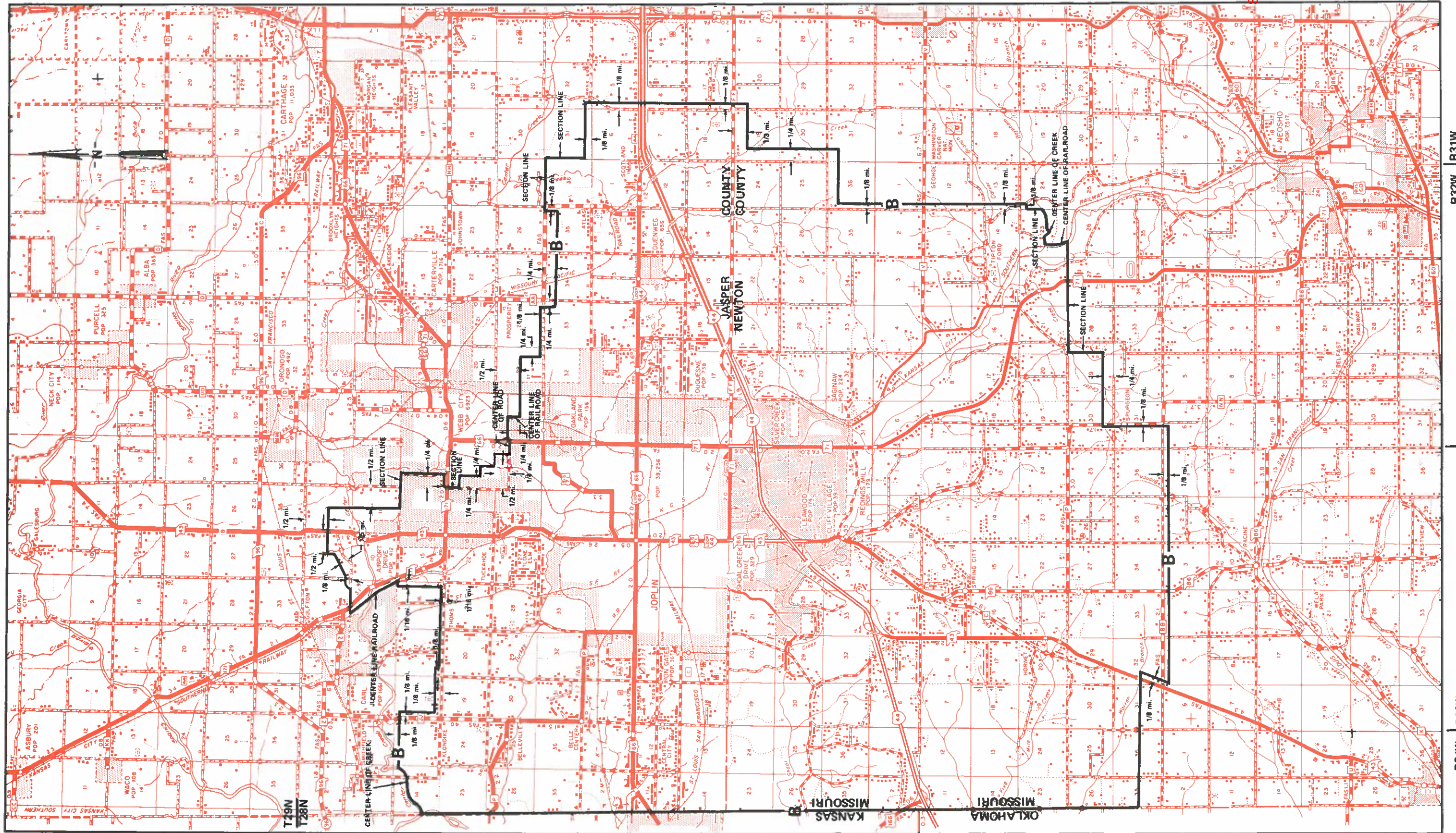
P. S. C. Mo. No. 17 EXCHANGE AREA MAP

Joplin, Missouri

12th Revised Sheet 3
Replacing 11th Revised Sheet 3

Filed
Missouri Public
Service Commission
JI-2012-0133

CANCELLED - Missouri Public Service Commission - 05/01/2024 - TN-2024-0278 - JI-2024-0142



Issued: September 29, 2011

By JOHN SONDRAG, President - Missouri
St. Louis, Missouri

T28N
T27N

T27N
T26N

Effective: October 29, 2011

NO SUPPLEMENT TO THIS TARIFF WILL
BE ISSUED EXCEPT FOR THE PURPOSE OF
CANCELING THIS TARIFF.

P. S. C. Mo. No. 17
EXCHANGE AREA MAP

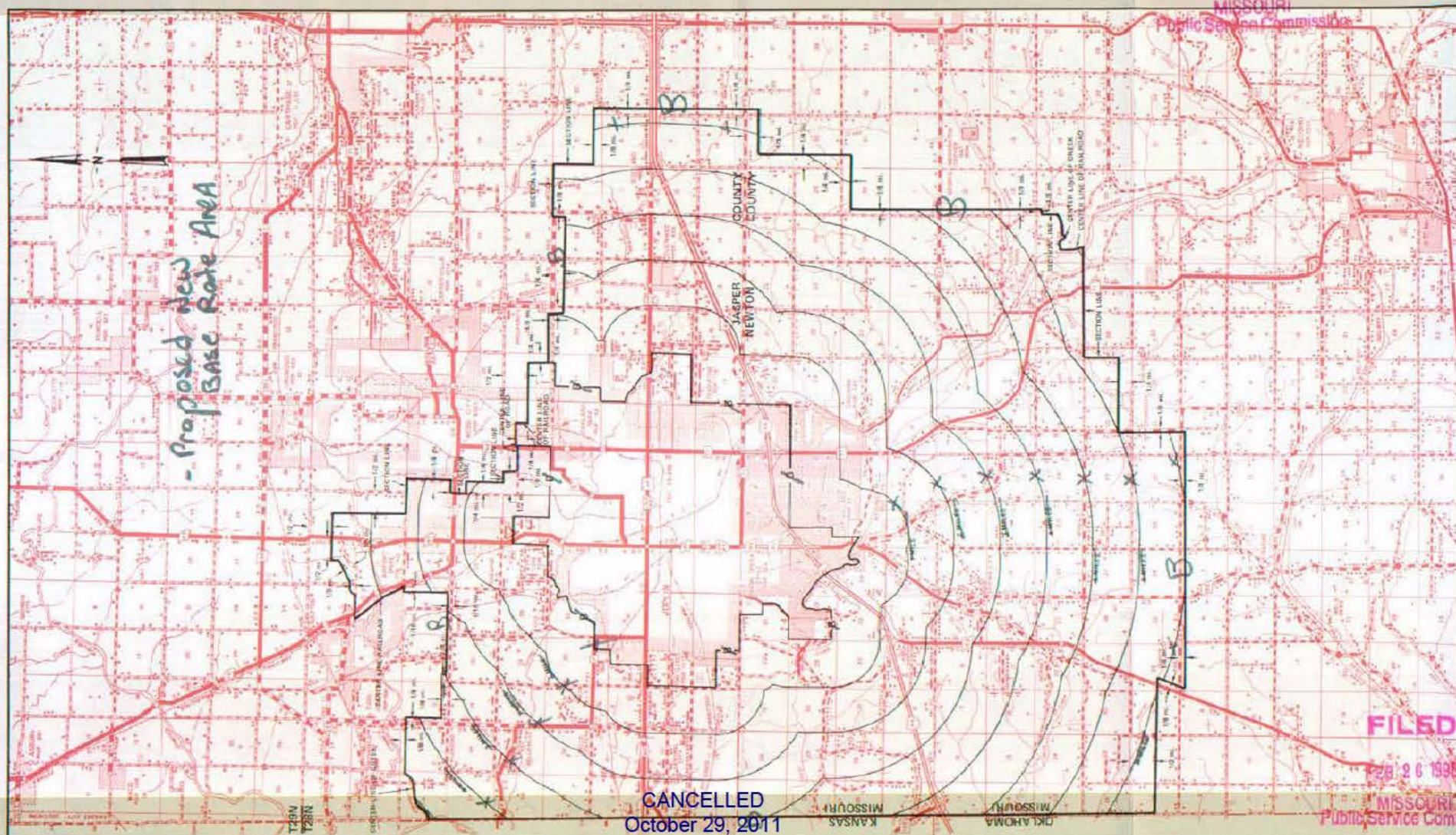
RECEIVED

Joplin, Missouri

JAN 26 1998

REPLACING 1/16 REVISION SHEET 3
1/6 REVISION SHEET 3

MISSOURI
Public Service Commission



- Proposed New Base Rate Area

CANCELLED
October 29, 2011

FILED

FEB 26 1998

MISSOURI
Public Service Commission

FEB 26 1998

Effective: JUL 24 1977

JAN 26 1998

By **R. H. SHOCKLEY**, Vice President, Missouri
Southwestern Bell Telephone Company
St. Louis, Missouri

Priscilla Hill-Ardain

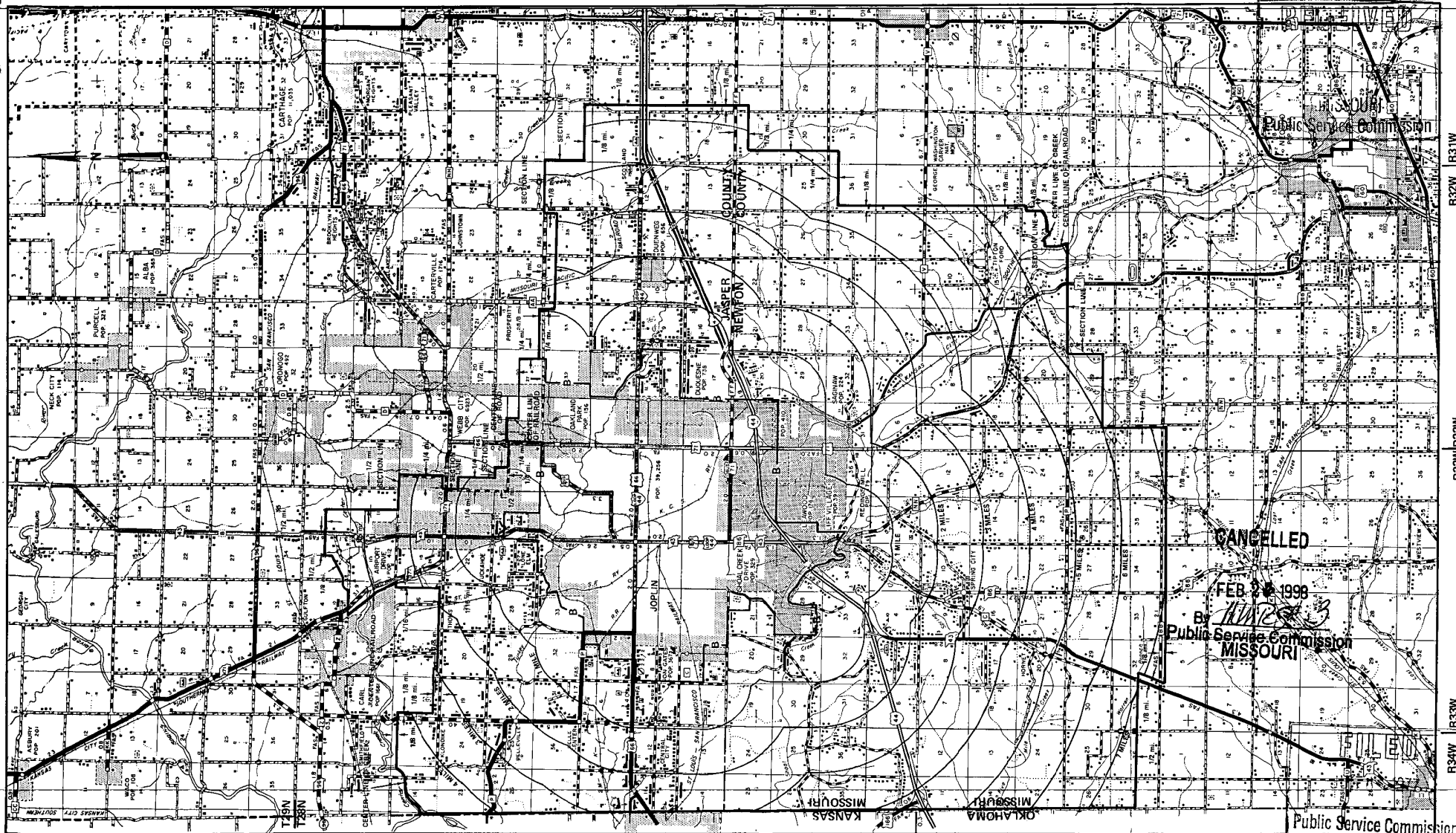
Missouri Public
Service Commission
JI-2012-0133

Issued: March 1 1977

NO SUPPLEMENT TO THIS TARIFF WILL
BE ISSUED EXCEPT FOR THE PURPOSE OF
CANCELING THIS TARIFF.

P. S. C. Mo. No. 17
EXCHANGE AREA MAP

Joplin, Missouri
10th REVISED SHEET 3
REPLACING 9th REVISED SHEET 3



By R. R. SHOCKLEY, Vice President, Missouri
Southwestern Bell Telephone Company
St. Louis, Missouri

Issued: March 1, 1977

Effective: JUL 8 1977