

No supplement to this tariff will be issued except for the purpose of canceling this tariff.

KANSAS CITY METROPOLITAN EXCHANGE
5th Revised Sheet 1
Replacing 4th Revised Sheet 1

RECEIVED

SOUTHWESTERN BELL TELEPHONE COMPANY
METROPOLITAN EXCHANGE TARIFF
Superseding All Tariffs Previously Issued

SEP 30 1993

I. Kansas City Metropolitan Exchange Service

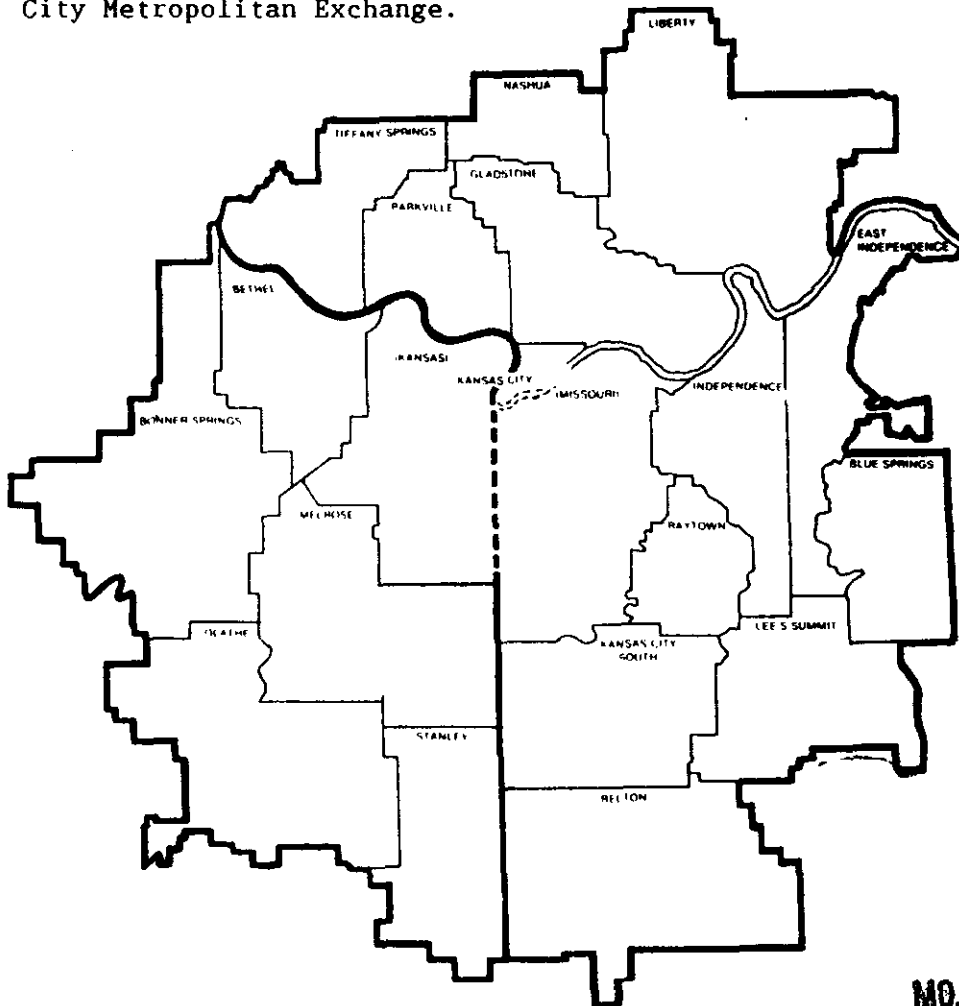
MO. PUBLIC SERVICE COMM.

A. General

In the Kansas City Metropolitan Exchange there is a Principal Kansas City Zone, a group of Metropolitan Calling Area-1 (MCA-1) Zones and a group of Metropolitan Calling Area-2 (MCA-2) Zones. The rates specified for each zone in the Metropolitan Exchange entitle the customer to local service within the primary service area specified for that zone.

B. Zones Included in the Metropolitan Exchange

The following schematic diagram shows the zones included in the Kansas City Metropolitan Exchange.



FILED

NOV 2 1993
92-306
MO. PUBLIC SERVICE COMM.

Issued: OCT 01 1993

Effective: NOV 02 1993

By D. R. KAESHOFER, Division Manager-Regulatory & Industry Relations
Southwestern Bell Telephone Company
St. Louis, Missouri

CANCELLED - Missouri Public Service Commission - 05/01/2024 - TN-2024-0278 - JI-2024-0142

(CT)(RT)
(C)(CT)(RT)

No supplement to this tariff will be issued except for the purpose of canceling this tariff.

**SOUTHWESTERN BELL TELEPHONE COMPANY
METROPOLITAN EXCHANGE TARIFF**
SUPERSEDING ALL TARIFFS PREVIOUSLY ISSUED

RECEIVED
OCT 14 1968
MISSOURI
Public Service Commission

Note: This sheet is canceled with the introduction of the wide area service plan.

FILED
JAN 11 1969
Public Service Commission

○ Indicates removal of text.

Issued ~~October 14, 1968~~

Effective: January 11, 1969

~~CANCELLED~~
May 1, 2014
Missouri Public
Service Commission
JL-2014-0379

By R. R. SHOCKLEY, Vice President and General Manager
St. Louis, Missouri

No supplement to this tariff will be issued except for the purpose of canceling this tariff.

P.S.C. Mo.—No.17

KANSAS CITY METROPOLITAN EXCHANGE

4th Revised Sheet 4-A

Replacing 3rd Revised Sheet 4-A

RECEIVED

DEC 10 1968

MISSOURI

Public Service Commission

The information previously contained on this sheet is now reflected in Sheet 4-A of the "Message Toll Telephone Service" section of the General Toll Tariff.

For any rates or practices relating to two-point exception services, refer to the General Toll Tariff.

FILED

JAN 11 1969

Public Service Commission

Issued: December 11, 1968

Effective: January 11, 1969

CANCELLED

May 1, 2014

Missouri Public

Service Commission

JL-2014-0379

By R. R. SHOCKLEY, Vice President and General Manager
Southwestern Bell Telephone Company
St. Louis, Missouri

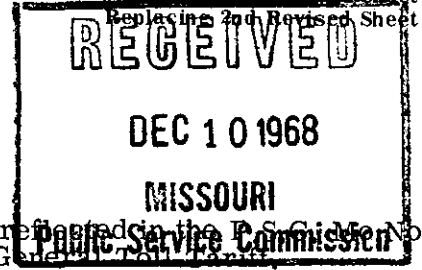
No supplement to this tariff will be issued except for the purpose of canceling this tariff.

P.S.C. Mo.—No.17

KANSAS CITY METROPOLITAN EXCHANGE

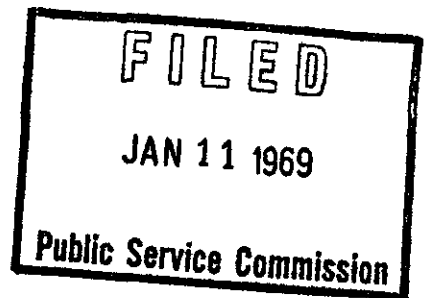
3rd Revised Sheet 4-B

Replacing 2nd Revised Sheet 4-B



The information previously contained on this sheet is now reflected in the P.S.C. Mo. No. 3, of the "Message Toll Telephone Service" section of the General Tariff.

For any rates or practices relating to two-point exception services, refer to the General Toll Tariff.



Issued: December 11, 1968

Effective: January 11, 1969

CANCELLED

May 1, 2014

Missouri Public
Service Commission

JL-2014-0379

By R. R. SHOCKLEY, Vice President and General Manager
Southwestern Bell Telephone Company
St. Louis, Missouri

No supplement to this tariff will be issued except for the purpose of canceling this tariff.

SOUTHWESTERN BELL TELEPHONE COMPANY
METROPOLITAN EXCHANGE TARIFF
SUPERSEDING ALL TARIFFS PREVIOUSLY ISSUED

RECEIVED
OCT 14 1968
MISSOURI
Public Service Commission

Note: This sheet is canceled with the introduction of the wide area service plan.

FILED
JAN 11 1969
Public Service Commission

○ Indicates removal of text.

Issued: October 14, 1968

Effective: January 11, 1969

CANCELLED
May 1, 2014
Missouri Public
Service Commission
JL-2014-0379

By R. R. SHOCKLEY, Vice President and General Manager
St. Louis, Missouri

No supplement to this tariff will be issued except for the purpose of cancelling this tariff.

P.S.C. Mo.—No.17

KANSAS CITY METROPOLITAN EXCHANGE

2nd Revised Sheet 5-A

Replacing 1st Revised Sheet 5-A
RECEIVED
DEC 10 1968
MISSOURI
Public Service Commission

The information previously contained on this sheet is now reflected in the P.S.C. Mo. No. 3, of the "Message Toll Telephone Service" section of the General Toll Tariff.

For any rates or practices relating to two-point exception services, refer to the General Toll Tariff.

FILED
JAN 11 1969
Public Service Commission

Issued December 11, 1968

Effective: January 11, 1969

CANCELLED
May 1, 2014 By R. R. SHOCKLEY, Vice President and General Manager
Missouri Public Southwestern Bell Telephone Company
Service Commission St. Louis, Missouri

JL-2014-0379

SBC PSC MO #17
Kansas City
Metropolitan Exchange
Belton Zone
7th Revised Sheet 6
Replacing 6th Revised Sheet 6

Non-Scannable Map

(Is viewable in the Data Center
200 Madison Street, 1st Floor
Jefferson City MO)

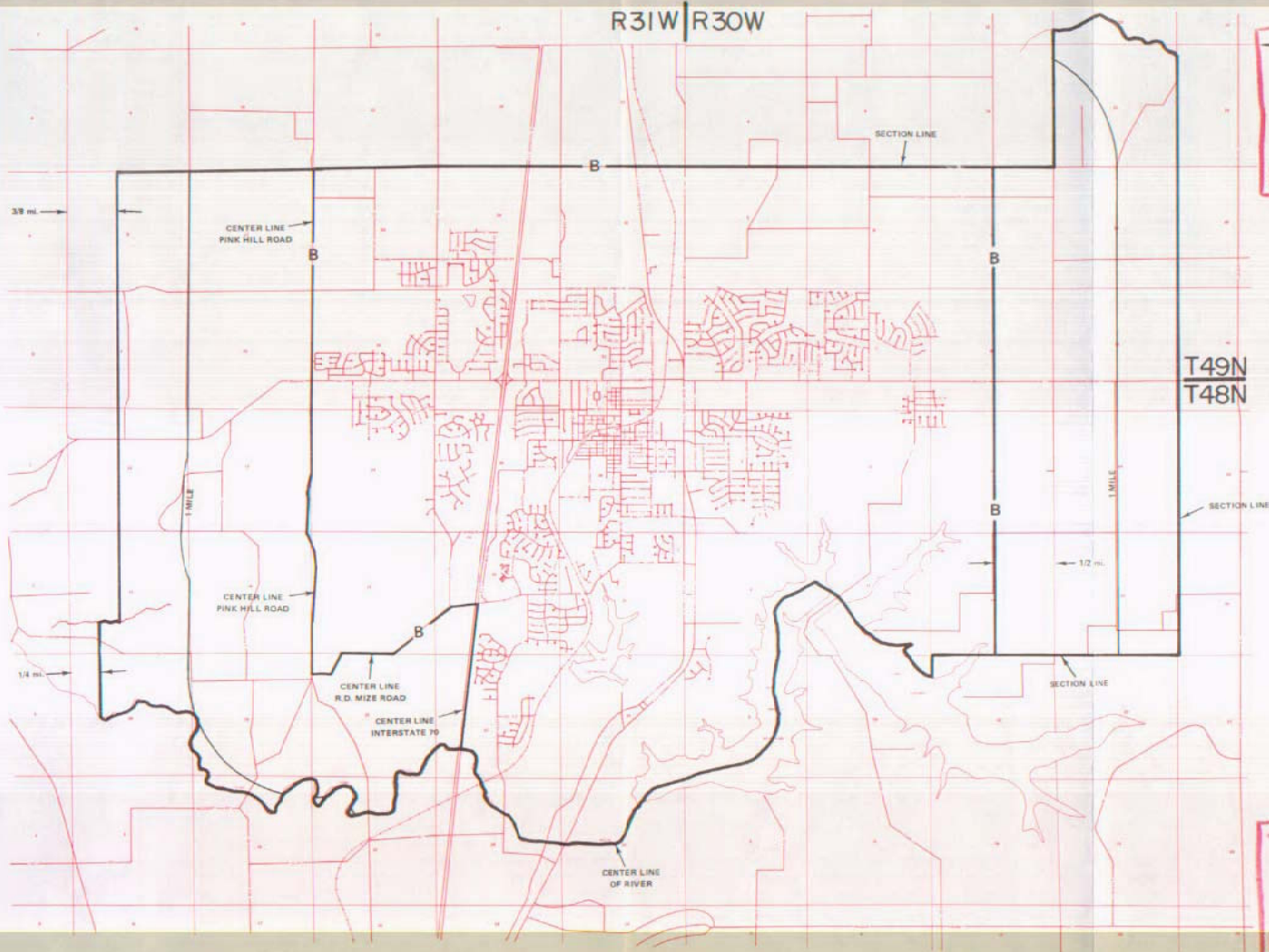
NO SUPPLEMENT TO THIS TARIFF WILL
BE ISSUED EXCEPT FOR THE PURPOSE OF
CANCELING THIS TARIFF.

P. S. C. Mo. No. 17

Kansas City Metropolitan Exchange
BLUE SPRINGS ZONE & BASE RATE AREA
1ST REVISED SHEET 6A
REPLACING ORIGINAL SHEET 6A

ZONE AND BASE RATE AREA MAP

R31W | R30W



RECEIVED
OCT 15 1985
MISSOURI
Public Service Commission

FILED
JAN - 2 1986
Public Service Commission

CANCELLED - Missouri Public Service Commission - 05/01/2024 - TN-2024-0278 - JI-2024-0142

By R.D. BARRON, PRESIDENT—MISSOURI DIVISION
Southwestern Bell Telephone Company
St. Louis, Missouri

Issued: October 14, 1985

Effective: January 2, 1986

SBC PSC MO #17
Kansas City
Metropolitan Exchange
East Independence Zone
6th Revised Sheet 7
Replacing 5th Revised Sheet 7

Non-Scannable Map

(Is viewable in the Data Center
200 Madison Street, 1st Floor
Jefferson City MO)

SBC Missouri
Exchange Area Map
Kansas City Metropolitan
East Independence Zone
PSC MO No. 17
5th Revised Sheet 7

Non-Scannable Map

(Viewable in the Data Center
located at:
200 Madison Street, 1st Floor
Jefferson City MO)

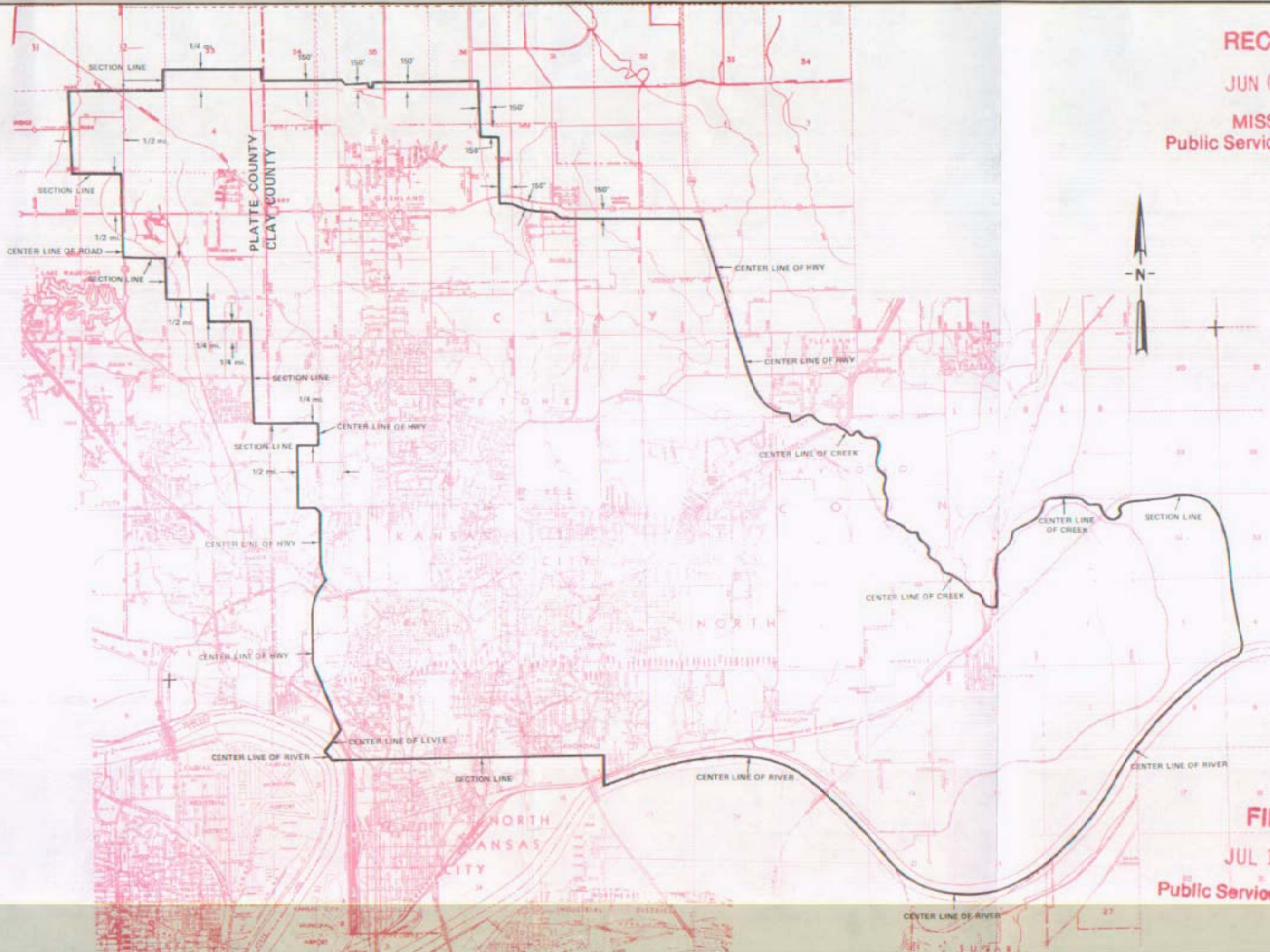
CANCELLED - Missouri Public Service Commission - 05/01/2024 - TN-2024-0278 - JI-2024-0142

NO SUPPLEMENT TO THIS TARIFF WILL BE ISSUED EXCEPT FOR THE PURPOSE OF CANCELING THIS TARIFF.

P. S. C. Mo. No. 17
ZONE AREA MAP

Kansas City Metropolitan Exchange
GLADSTONE ZONE
12th REVISED SHEET 8
REPLACING 11th REVISED SHEET 8

RECEIVED
JUN 06 1988
MISSOURI
Public Service Commission



FILED
JUL 11 1988
Public Service Commission

Issued: JUNE 10, 1988

By R.D. BARRON, PRESIDENT—MISSOURI DIVISION
Southwestern Bell Telephone Company
St. Louis, Missouri

Effective: JULY 11, 1988

SBC PSC MO #17
Kansas City
Metropolitan Exchange
Independence Zone
9th Revised Sheet 9
Replacing 8th Revised Sheet 9

Non-Scannable Map

(Is viewable in the Data Center
200 Madison Street, 1st Floor
Jefferson City MO)

SBC PSC MO #17

Kansas City

Metropolitan Exchange

Kansas City Zone Area

2nd Revised Sheet 10

Replacing 1st Revised Sheet 10

Non-Scannable Map

(Is viewable in the Data Center
200 Madison Street, 1st Floor
Jefferson City MO)

SBC Missouri
Exchange Area Map
Kansas City Metropolitan
Kansas City Zone Area
PSC MO No. 17
1st Revised Sheet 10

Non-Scannable Map

(Viewable in the Data Center
located at:
200 Madison Street, 1st Floor
Jefferson City MO)

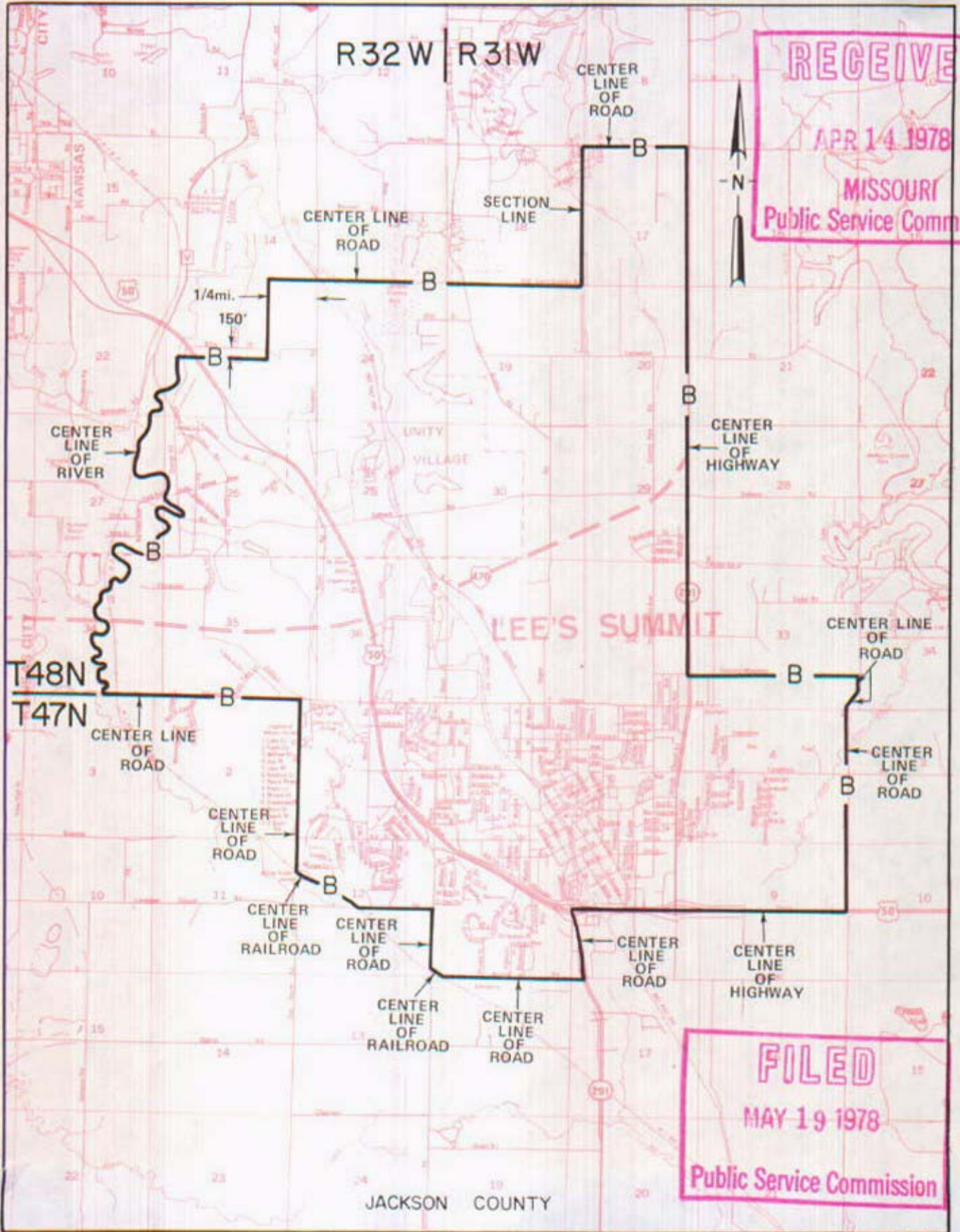
NO SUPPLEMENT TO THIS TARIFF WILL BE ISSUED EXCEPT FOR THE PURPOSE OF CANCELING THIS TARIFF.

P. S. C. Mo. No. 17

Kansas City Metropolitan Exchange
LEE'S SUMMIT ZONE

BASE RATE AREA MAP

5th REVISED SHEET 11-A
REPLACING 4th REVISED SHEET 11-A



RECEIVED
APR 14 1978
MISSOURI
Public Service Commission

FILED
MAY 19 1978
Public Service Commission

CANCELLED - Missouri Public Service Commission - 05/01/2024 - TN-2024-0278 - JI-2024-0142

By R. R. SHOCKLEY, Vice President, Missouri
Southwestern Bell Telephone Company
St. Louis, Missouri

FILE # 7800

033

Issued: APRIL 19, 1978

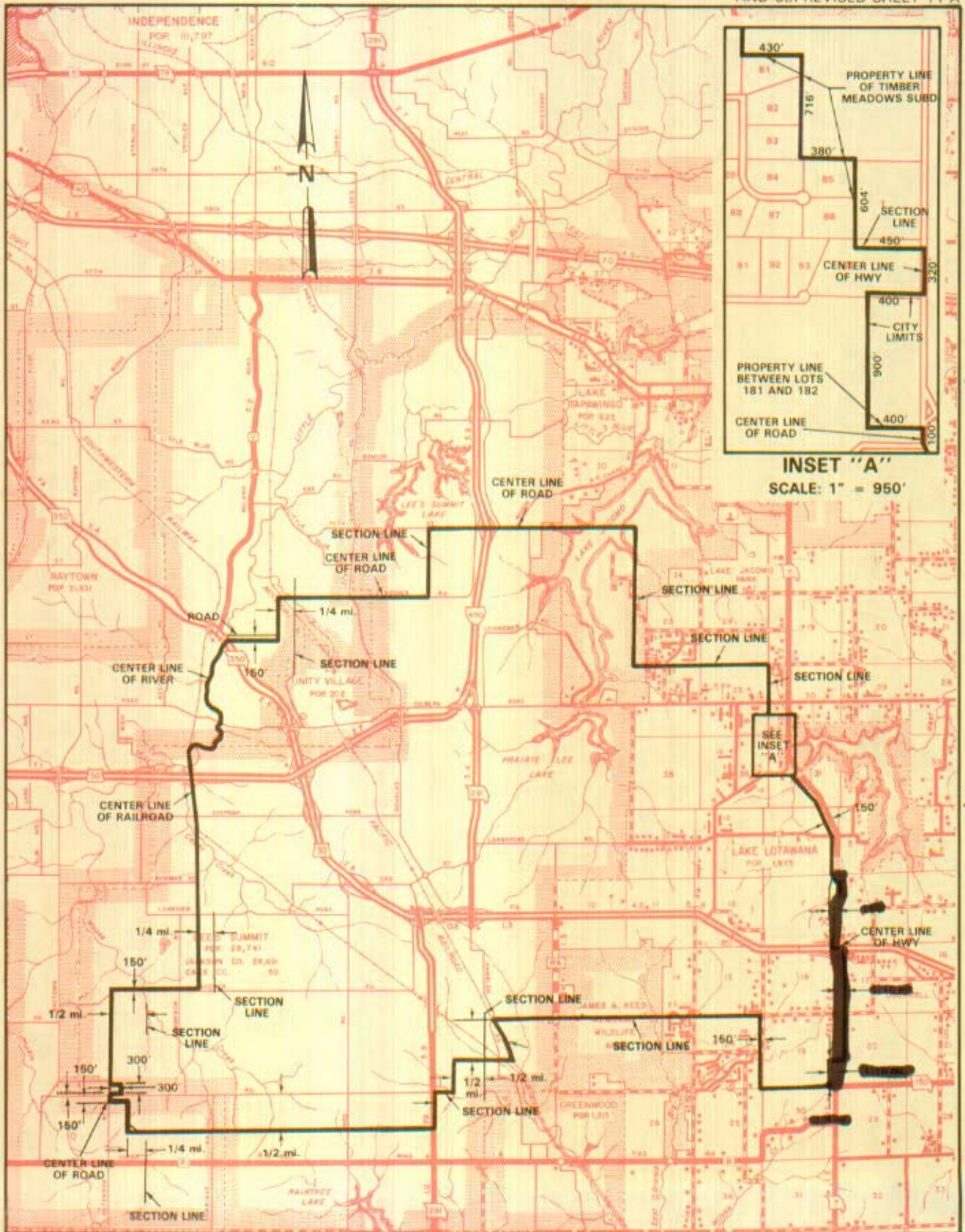
Effective: MAY 19, 1978

NO SUPPLEMENT TO THIS TARIFF WILL BE ISSUED EXCEPT FOR THE PURPOSE OF CANCELING THIS TARIFF.

Kansas City Metropolitan Exchange LEE'S SUMMIT ZONE

P. S. C. Mo. No. 17 ZONE AREA MAP

Should be 10th
9th
REPLACING 7th REVISSED SHEET 11-B
AND 5th REVISSED SHEET 11-A



Issued: January 19, 2007

Effective: February 18, 2007

By CINDY BRINKLEY, President - Missouri

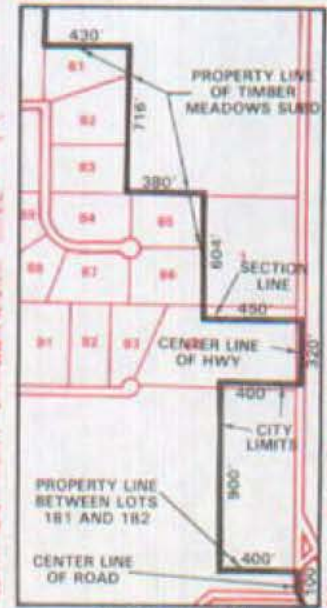
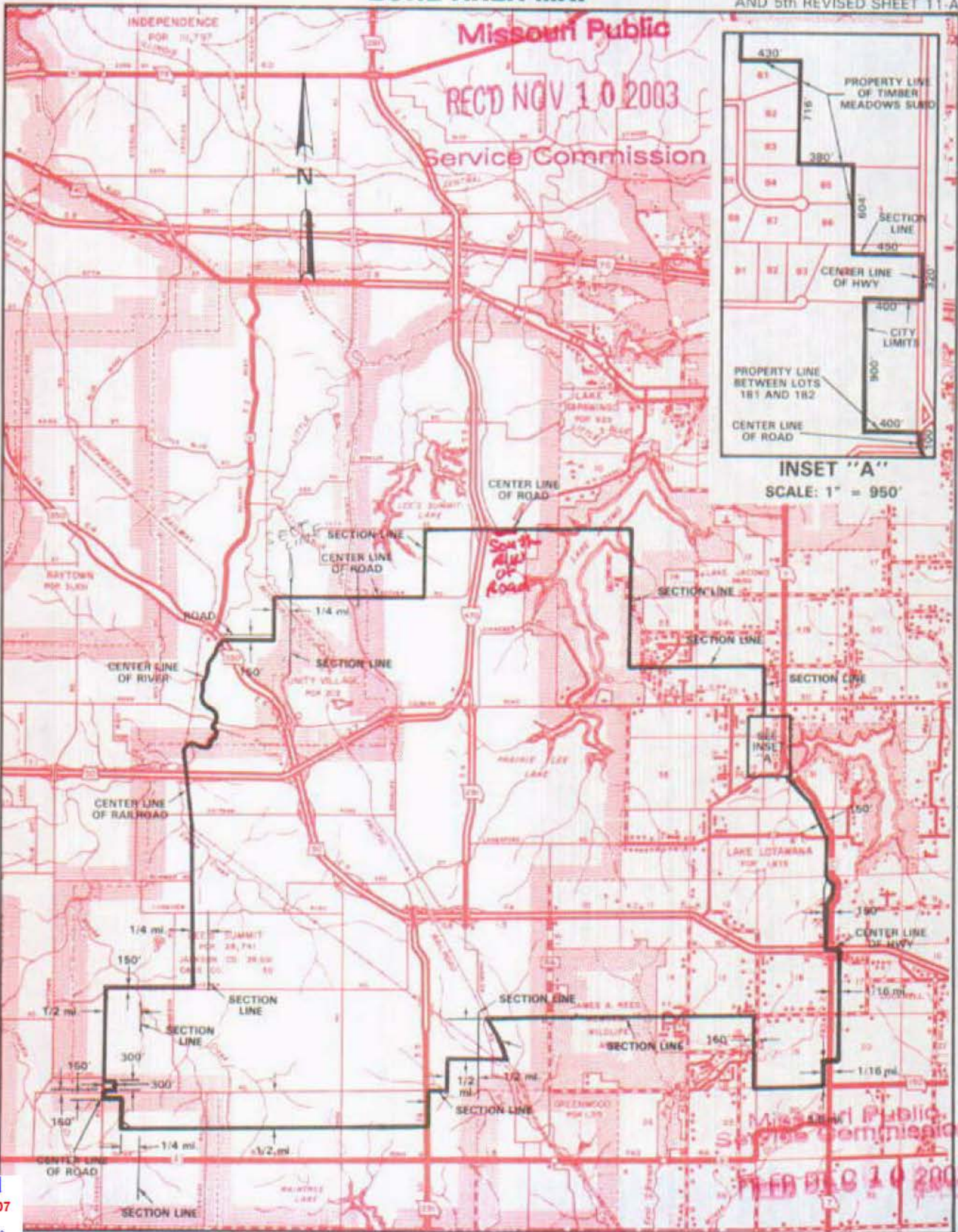
CANCELLED - Missouri Public Service Commission - 05/01/2024 - TN-2024-0278 - JI-2024-0142

NO SUPPLEMENT TO THIS TARIFF WILL BE ISSUED EXCEPT FOR THE PURPOSE OF CANCELING THIS TARIFF.

Kansas City Metropolitan Exchange LEE'S SUMMIT ZONE

REPLACING 9th REVISED SHEET 11-B
8th REVISED SHEET 11-B
AND 5th REVISED SHEET 11-A

P. S. C. Mo. No. 17 ZONE AREA MAP



INSET "A"
SCALE: 1" = 950'

T49N
T48N

T48N
T47N

Cancelled
February 18, 2007
Missouri Public
Service Commission

November 10, 2003
Issued: August 27, 1990

R32W|R31W
By *Cindy Bonbrley* R. D. BARRON, PRESIDENT, MISSOURI DIVISION
Southwestern Bell Telephone Company, d/b/a SBC Missouri
St. Louis, Missouri

R31W|R30W
Effective: October 22, 1990
December 10, 2003

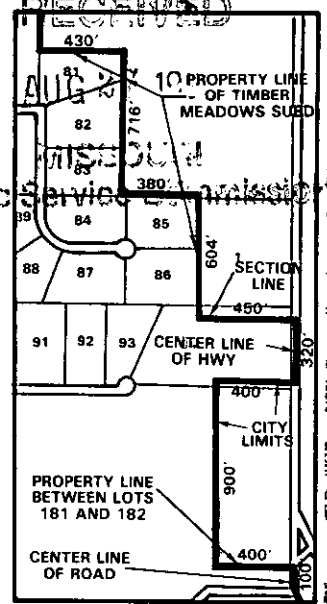
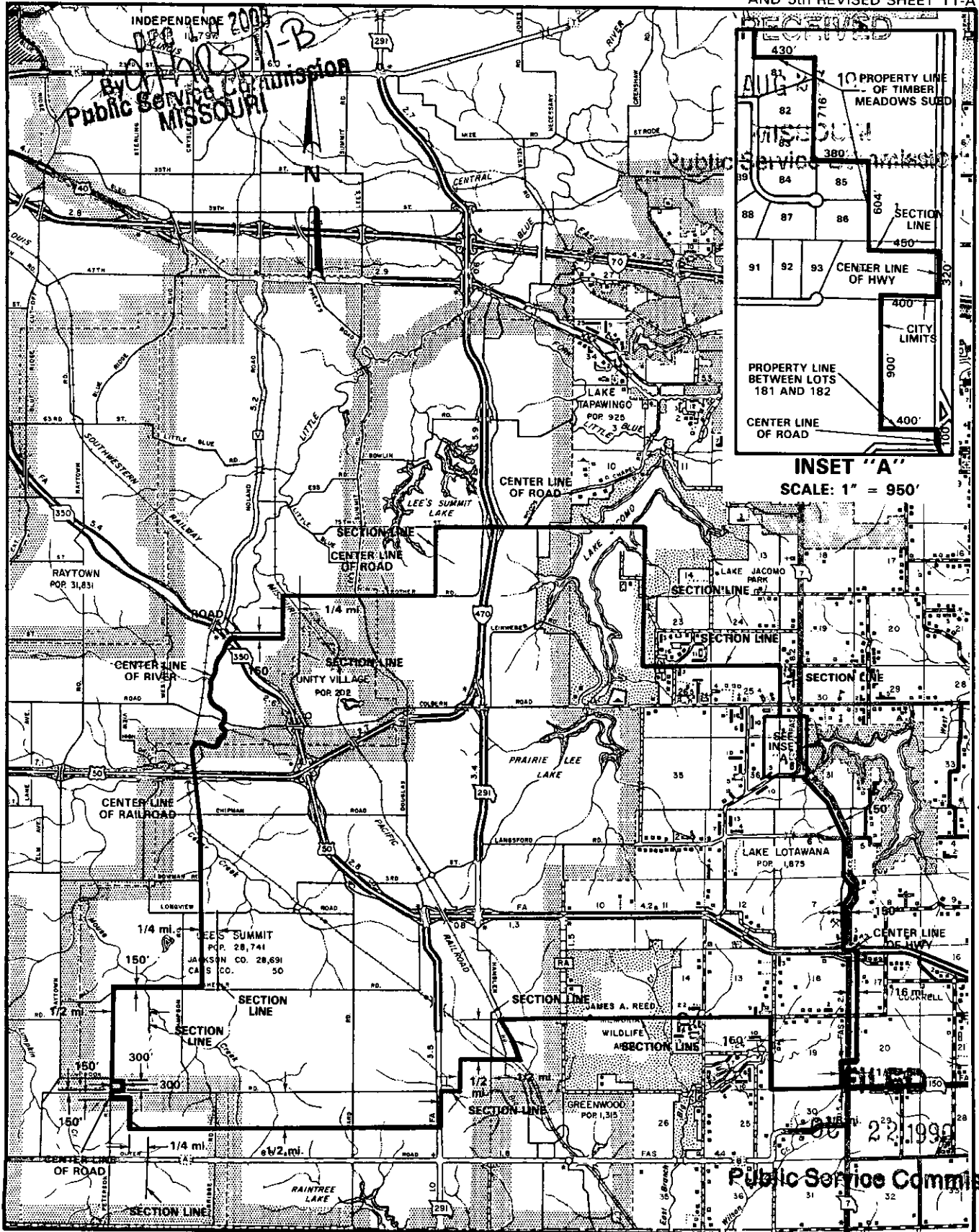
NO SUPPLEMENT TO THIS TARIFF WILL BE ISSUED EXCEPT FOR THE PURPOSE OF CANCELING THIS TARIFF.

CANCELLED

**P. S. C. Mo. No. 17
ZONE AREA MAP**

**Kansas City
Metropolitan Exchange
LEE'S SUMMIT ZONE**

8th REVISED SHEET 11-B
REPLACING 7th REVISED SHEET 11-B
AND 5th REVISED SHEET 11-A



T49N
T48N

T48N
T47N

R32W/R31W

R31W/R30W

By R. D. BARRON, PRESIDENT, MISSOURI DIVISION
Southwestern Bell Telephone Company
St. Louis, Missouri

Issued: August 27, 1990

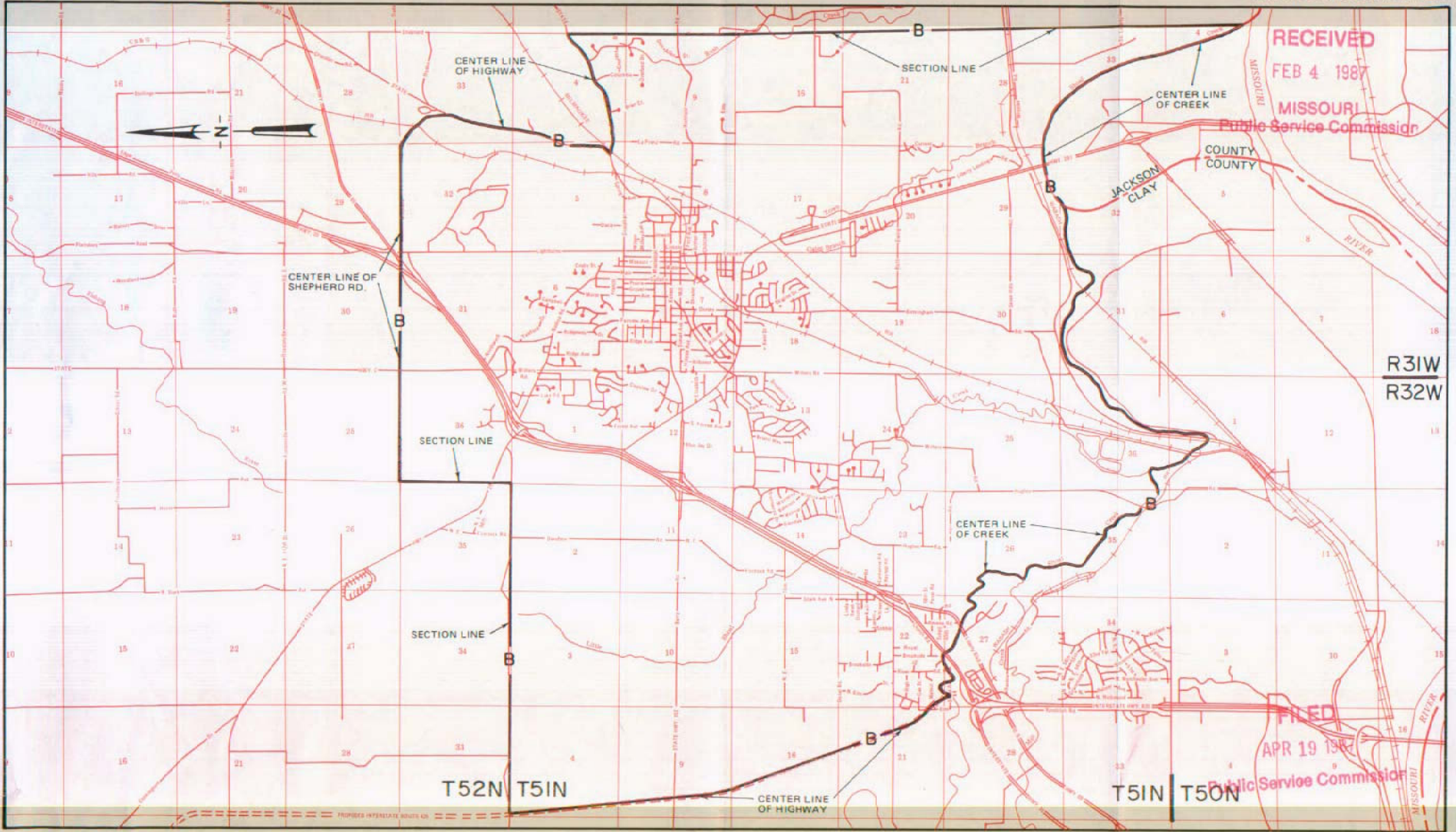
Effective: October 22, 1990

NO SUPPLEMENT TO THIS TARIFF WILL BE ISSUED EXCEPT FOR THE PURPOSE OF CANCELING THIS TARIFF.

P. S. C. Mo. No. 17
BASE RATE AREA MAP

Kansas City
Metropolitan Exchange
LIBERTY ZONE
4th REVISED SHEET 12-A
REPLACING 3rd REVISED SHEET 12-A

CANCELLED - Missouri Public Service Commission - 05/01/2024 - TN-2024-0278 - JI-2024-0142



By R.D. BARRON, PRESIDENT—MISSOURI DIVISION
Southwestern Bell Telephone Company
St. Louis, Missouri

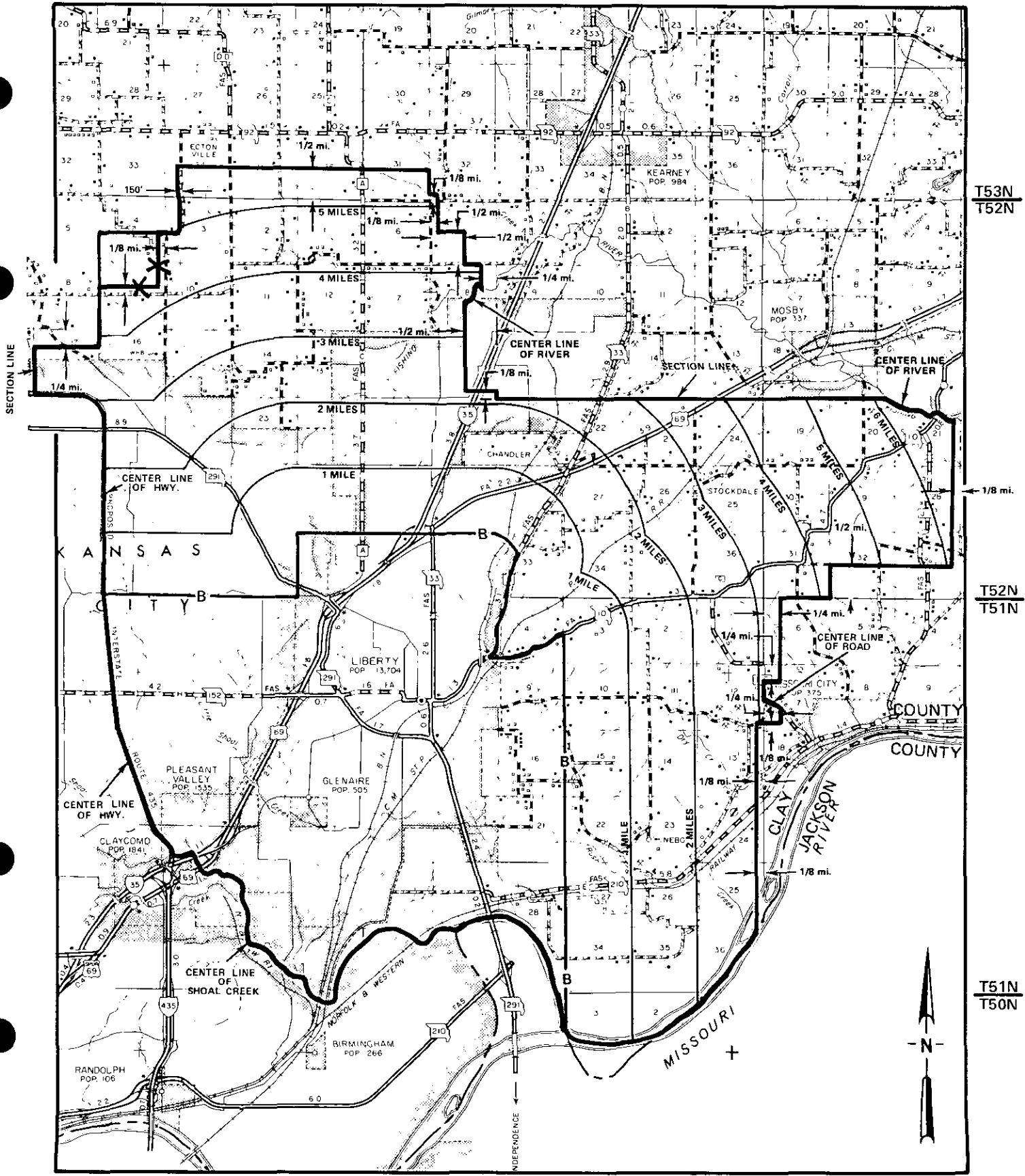
Issued: February 6, 1987

Effective: April 19, 1987

EXCHANGE AREA MAP

9th Revised Sheet 12-B
Replacing 8th Revised Sheet 12-B

CANCELLED - Missouri Public Service Commission - 05/01/2024 - TN-2024-0278 - JI-2024-0142



R32W/R31W

R31W/R30W

Issued: July 12, 2007

By CINDY BRINKLEY, President - Missouri
St. Louis, Missouri

FILED Effective: August 11, 2007

Missouri Public
Service Commission

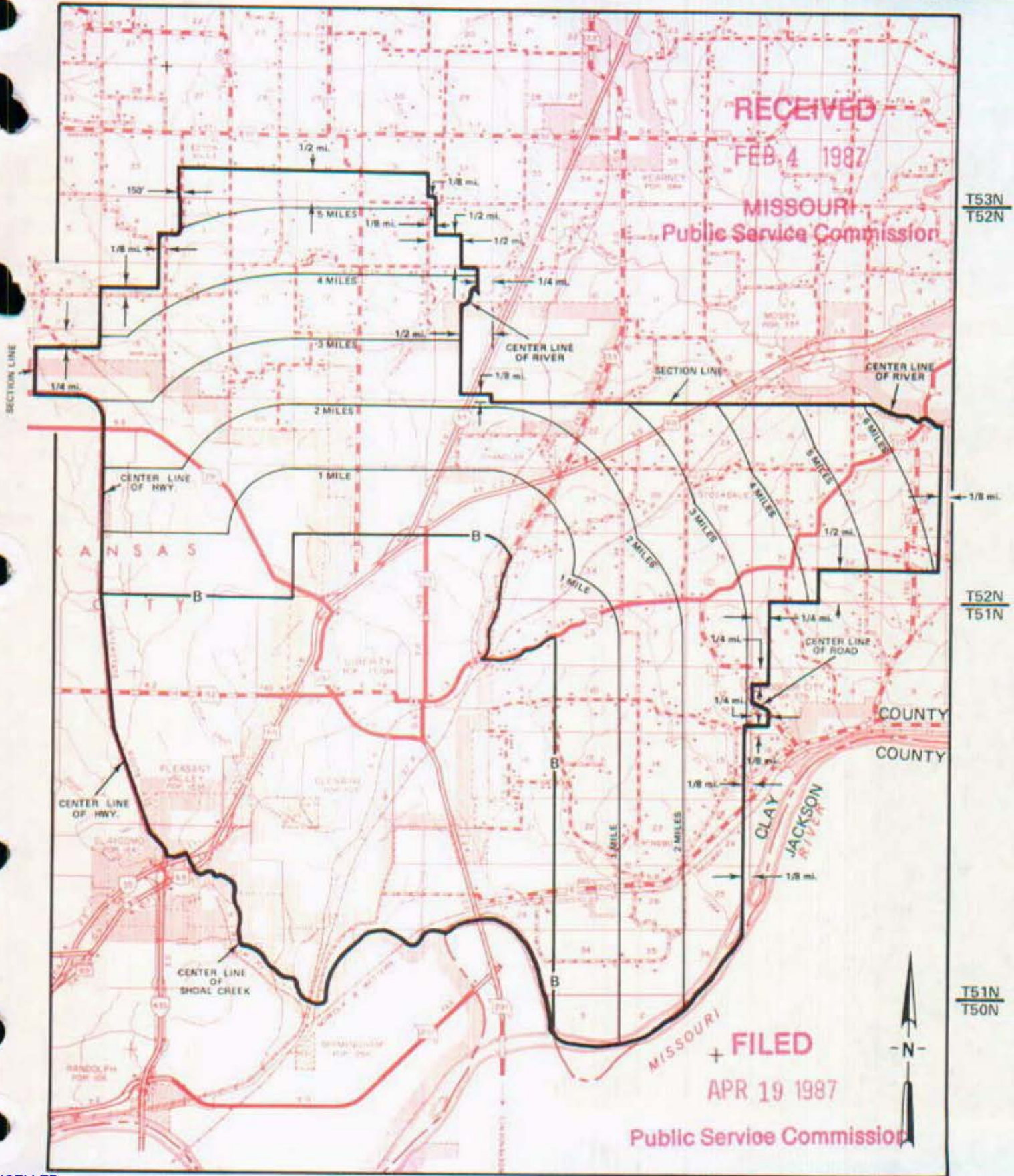
NO SUPPLEMENT TO THIS TARIFF WILL BE ISSUED EXCEPT FOR THE PURPOSE OF CANCELING THIS TARIFF.

P. S. C. Mo. No. 17

Kansas City
Metropolitan Exchange
LIBERTY ZONE

EXCHANGE AREA MAP

8th REVISED SHEET 12-B
REPLACING 7th REVISED SHEET 12-B



RECEIVED
FEB 4 1987

MISSOURI
Public Service Commission

T53N

T52N

T52N

T51N

T51N

T50N

MISSOURI
+ FILED
APR 19 1987
Public Service Commission



CANCELLED
Aug. 11, 2007
Missouri Public
Service Commission

Issued: February 6, 1987

R32W/R31W
By R. D. BARRON, President, Missouri Division
Southwestern Bell Telephone Company
St. Louis, Missouri

R31W/R30W
Effective: April 19, 1987

CANCELLED - Missouri Public Service Commission - 05/01/2024 - TN-2024-0278 - JI-2024-0142

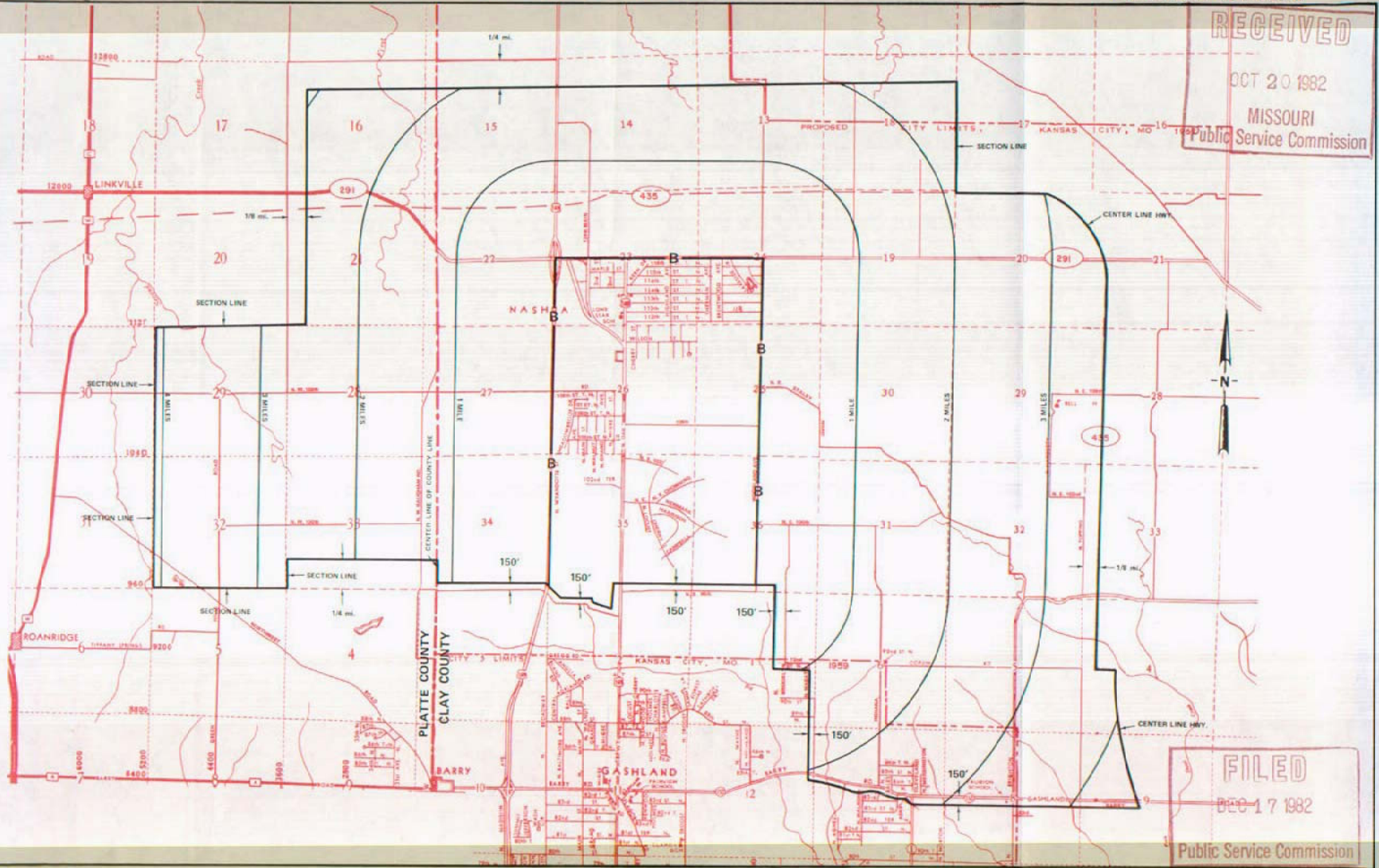
NO SUPPLEMENT TO THIS TARIFF WILL BE ISSUED EXCEPT FOR THE PURPOSE OF CANCELING THIS TARIFF.

P. S. C. Mo. No. 17

Kansas City Metropolitan Exchange

NASHUA ZONE AND BASE RATE AREA
3rd REVISED SHEET 17
REPLACING 2nd REVISED SHEET 17

ZONE AND BASE RATE AREA MAP



Issued: OCTOBER 22, 1982

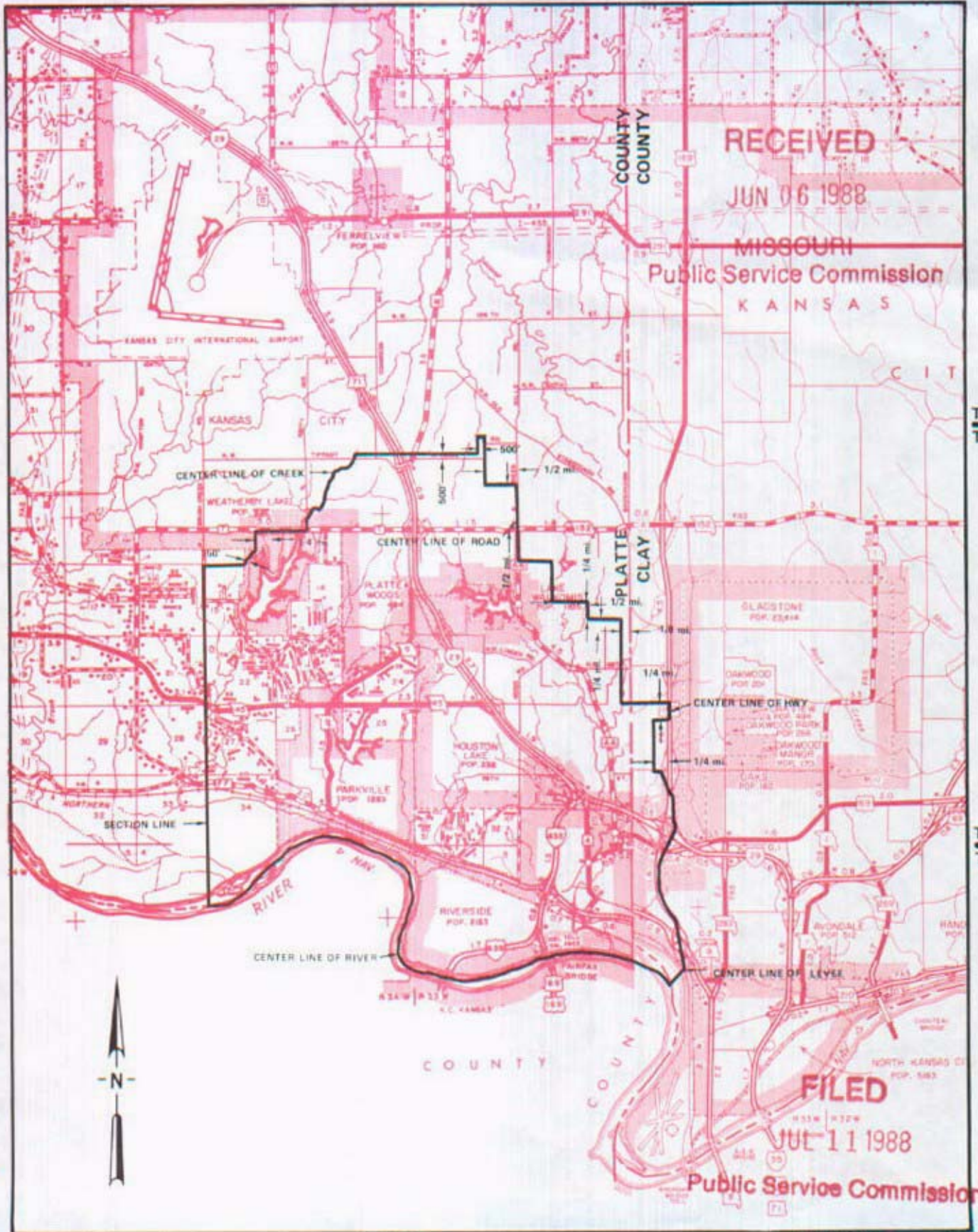
By R. D. BARRON, Vice President, Missouri
Southwestern Bell Telephone Company
St. Louis, Missouri

Effective: DECEMBER 17, 1982

NO SUPPLEMENT TO THIS TARIFF WILL BE ISSUED EXCEPT FOR THE PURPOSE OF CANCELING THIS TARIFF.

P. S. C. Mo. No. 17
ZONE AREA MAP

Kansas City Metropolitan Exchange
PARKVILLE ZONE
11th REVISED SHEET 13
REPLACING 10th REVISED SHEET 13



CANCELLED - Missouri Public Service Commission - 05/01/2024 - TN-2024-0278 - JI-2024-0142

By R. D. BARRON, President, Missouri Division
Southwestern Bell Telephone Company
St. Louis, Missouri

Issued: JUNE 10, 1988

Effective: JULY 11, 1988

CANCELLED - Missouri Public Service Commission - 05/01/2024 - TN-2024-0278 - JI-2024-0142

NO SUPPLEMENT TO THIS TARIFF WILL BE ISSUED EXCEPT FOR THE PURPOSE OF CANCELING THIS TARIFF.

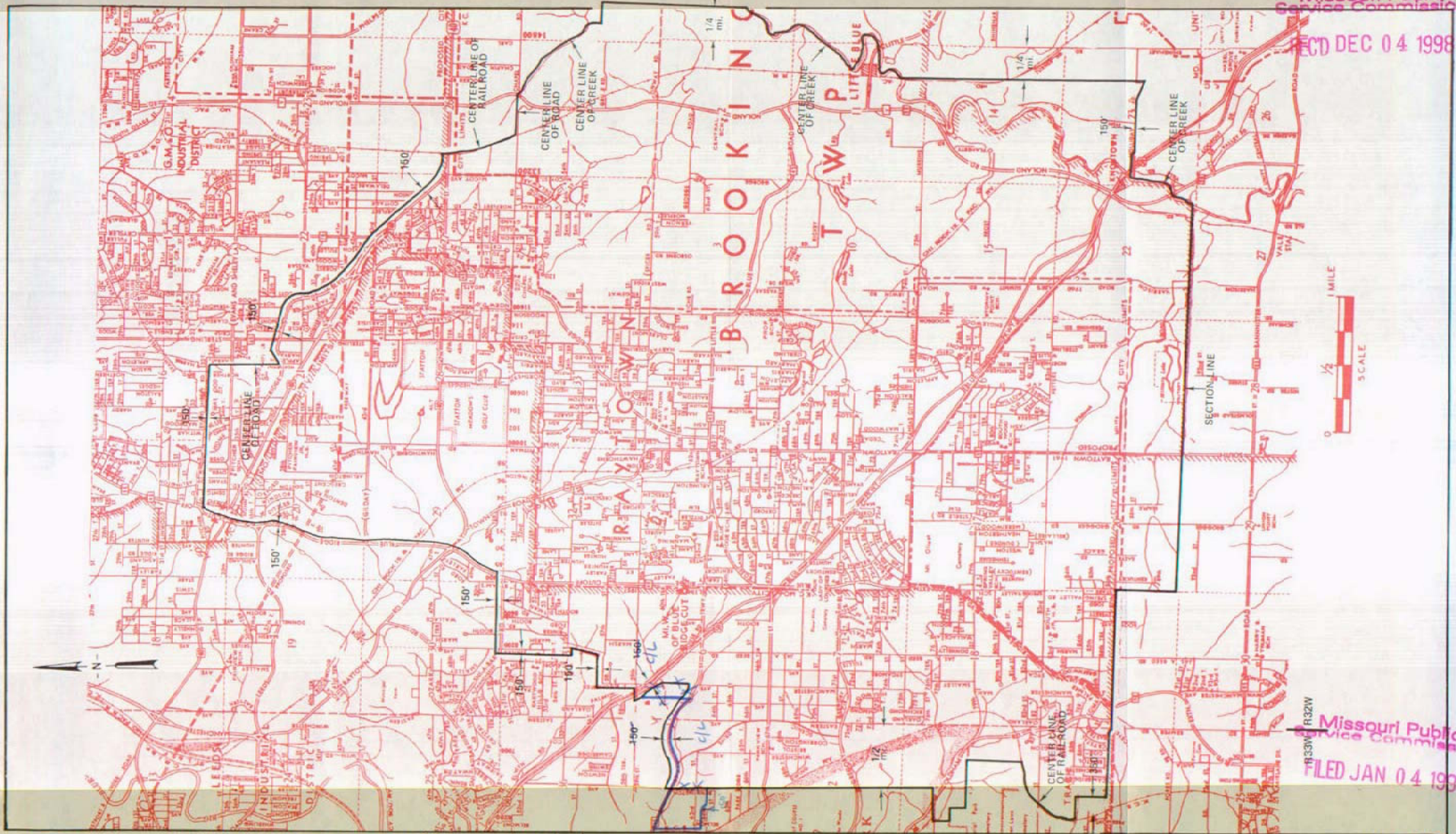
P. S. C. Mo. No. 17

ZONE AND BASE RATE AREA MAP

Kansas City
Metropolitan Exchange
RAY TOWN ZONE
REPLACING REVISED SHEET 14
REPLACING REVISED SHEET 14

Missouri Public
Service Commission

REC'D DEC 04 1998



DEC 04 1998

Issued: FEBRUARY 7, 1980

By *RAY SHOCKLEY*, President, Missouri
Southwestern Bell Telephone Company
St. Louis, Missouri

Priscilla Hill-Ardoin

T49N
T48N

Missouri Public
Service Commission

FILED JAN 04 1999

JAN 04 1999

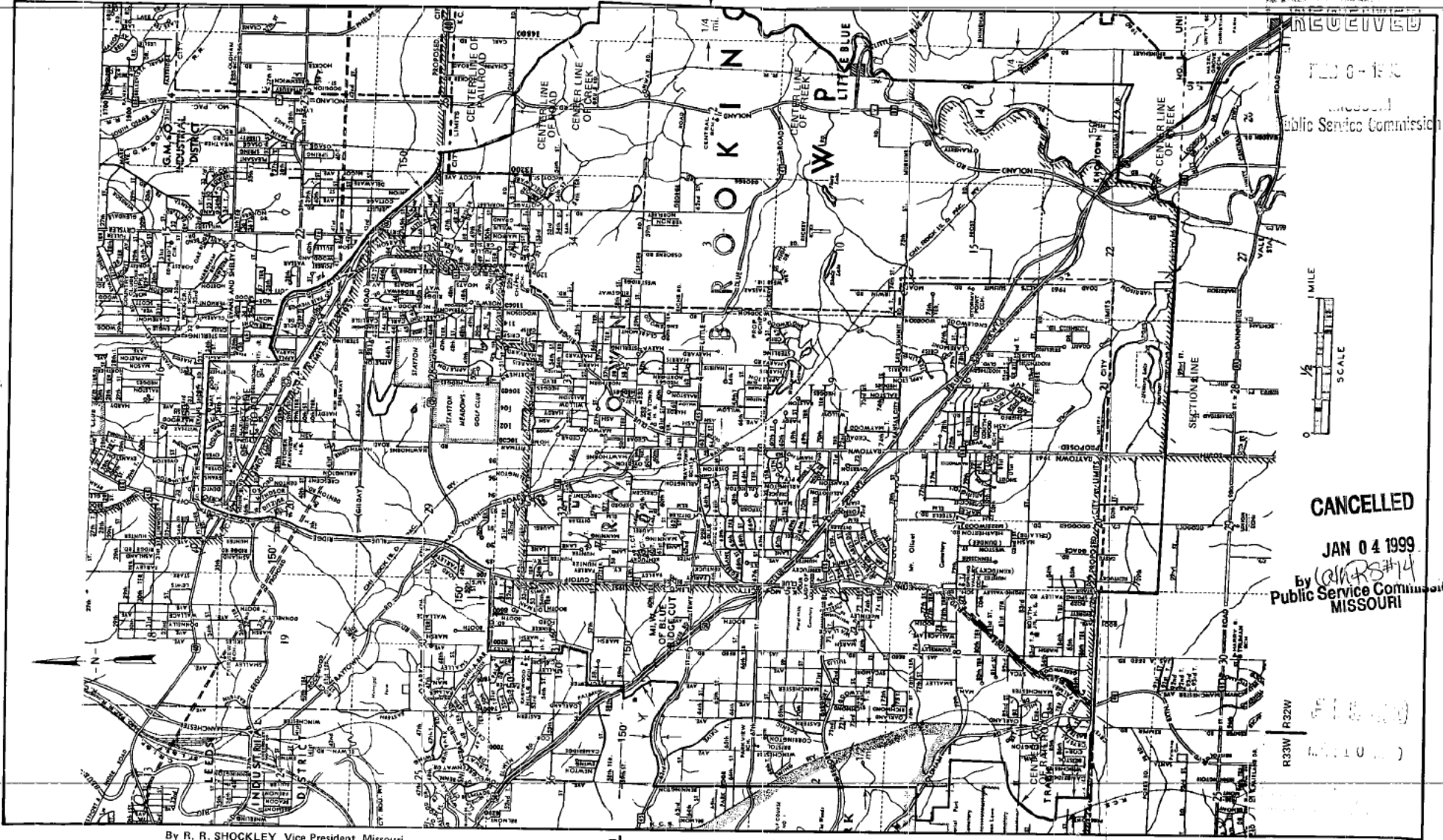
Effective: MAR 10 1980

NO SUPPLEMENT TO THIS TARIFF WILL
BE ISSUED EXCEPT FOR THE PURPOSE OF
CANCELING THIS TARIFF.

P. S. C. Mo. No. 17

Kansas City
Metropolitan Exchange
RAYTOWN ZONE
5th REVISED SHEET 14
REPLACING 4th REVISED SHEET 14

ZONE AND BASE RATE AREA MAP



RECEIVED
FEB 07 1980
Missouri
Public Service Commission



CANCELLED

JAN 04 1999
by *WARS#14*
Public Service Commission
MISSOURI

R32W
R33W

By R. R. SHOCKLEY, Vice President, Missouri
Southwestern Bell Telephone Company
St. Louis, Missouri

T48N
T48N

Issued: FEBRUARY 7, 1980

Effective: MAR 10 1980

SBC PSC MO #17
Kansas City
Metropolitan Exchange
South Kansas City Base Rate Area
6th Revised Sheet 15
Replacing 5th Revised Sheet 15

Non-Scannable
Map

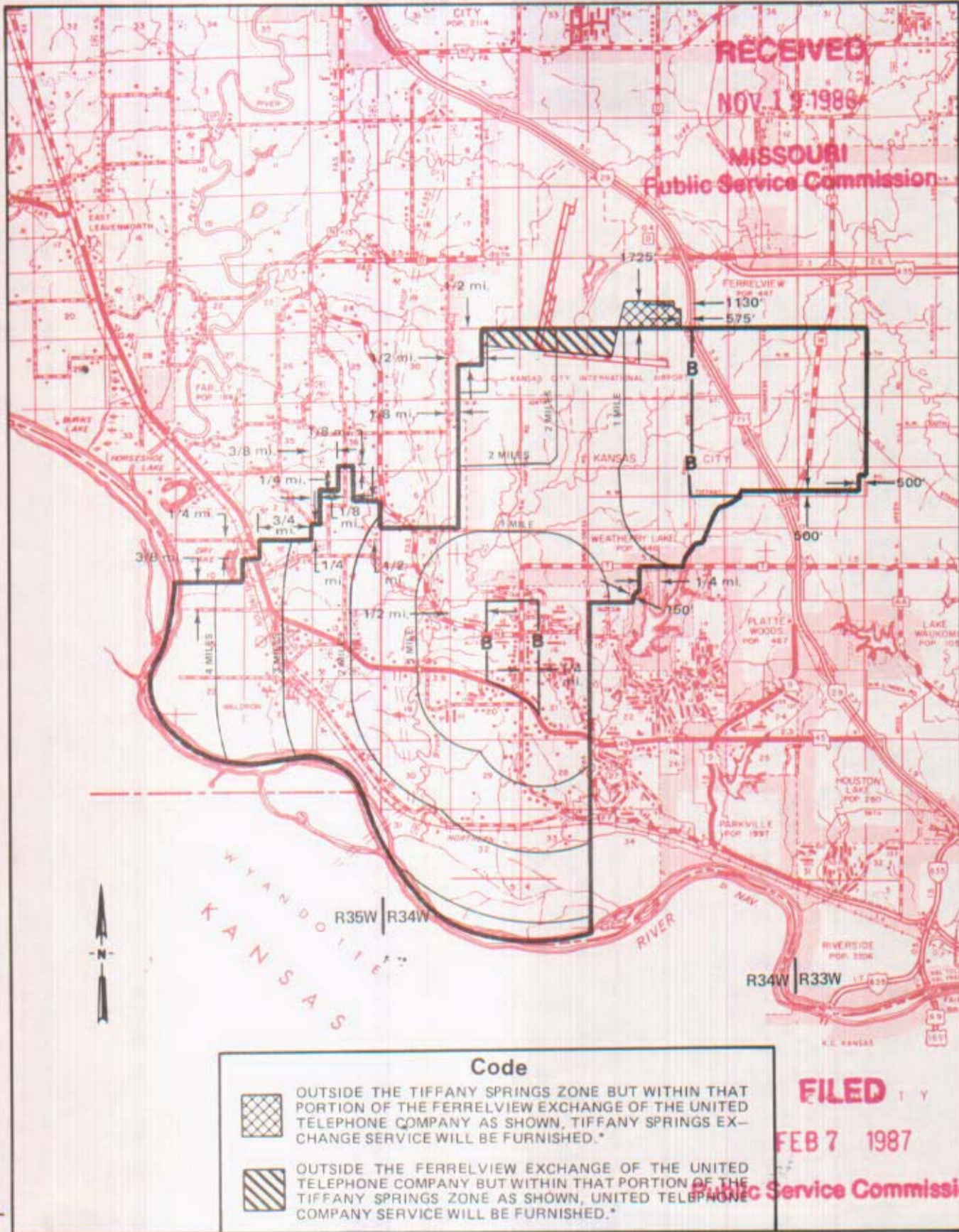
(Is viewable in the Data Center
200 Madison Street, 1st Floor
Jefferson City MO)

NO SUPPLEMENT TO THIS TARIFF WILL BE ISSUED EXCEPT FOR THE PURPOSE OF CANCELING THIS TARIFF.

P. S. C. Mo. No. 17 ZONE AND BASE RATE AREA

Kansas City Metropolitan Exchange
TIFFANY SPRINGS ZONE

6th REVISED SHEET 16
REPLACING 5th REVISED SHEET 16



CANCELLED - Missouri Public Service Commission - 05/01/2024 - TN-2024-0278 - JI-2024-0142

Issued: November 19, 1986

By **R. D. BARRON**, President, Missouri Division
Southwestern Bell Telephone Company
St. Louis, Missouri

Effective: February 7, 1987

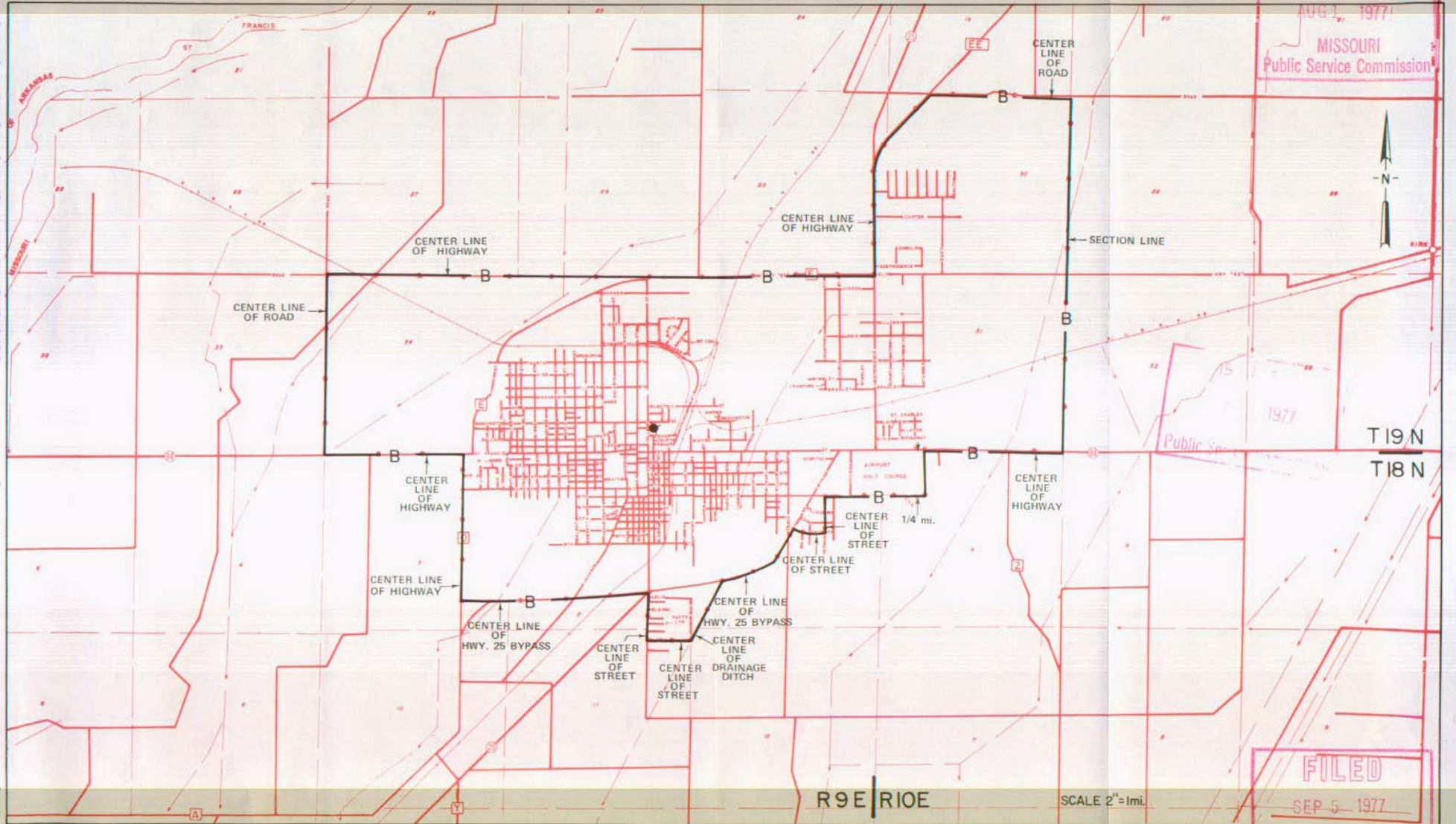
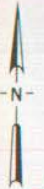
NO SUPPLEMENT TO THIS TARIFF WILL BE ISSUED EXCEPT FOR THE PURPOSE OF CANCELING THIS TARIFF.

P. S. C. Mo. No. 17
BASE RATE AREA MAP

Kennett, Missouri
RECEIVED
REPLACING 2ND REVISED SHEET 2

AUG 1 1977

MISSOURI
Public Service Commission



CANCELLED - Missouri Public Service Commission - 05/01/2024 - TN-2024-0278 - JI-2024-0142

By R. R. SHOCKLEY, Vice President, Missouri
Southwestern Bell Telephone Company
St. Louis, Missouri

Issued: August 5, 1977

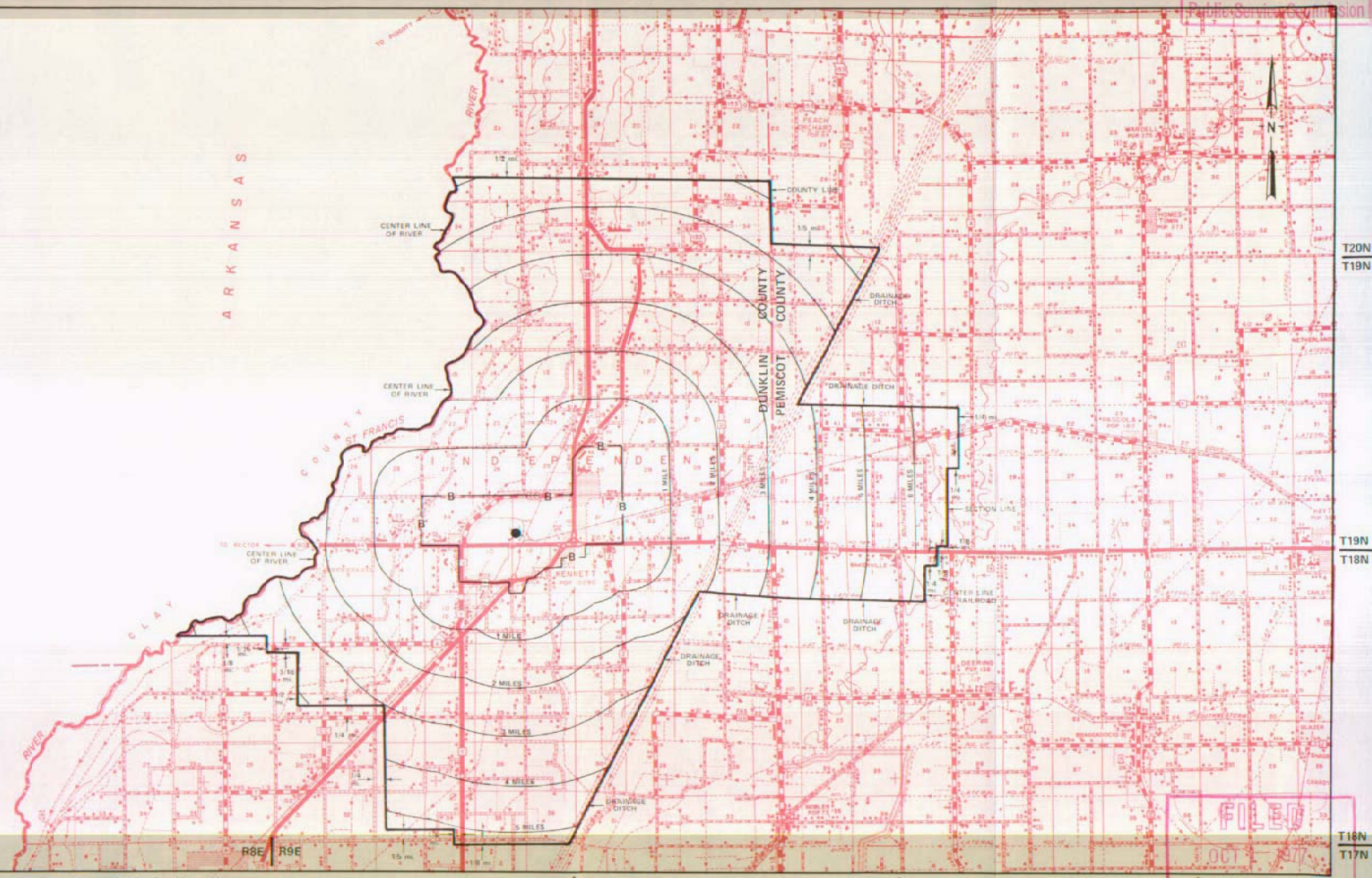
FILED
SEP 5 1977
Public Service Commission
Effective: September 5, 1977

CANCELLED - Missouri Public Service Commission - 05/01/2024 - TN-2024-0278 - JI-2024-0142

NO SUPPLEMENT TO THIS TARIFF WILL BE ISSUED EXCEPT FOR THE PURPOSE OF CANCELING THIS TARIFF.

P. S. C. Mo. No. 17 EXCHANGE AREA MAP

RECEIVED
Kennett, Missouri
APR 11 1977
2nd REVISED SHEET 3
REPLACING 1st REVISED SHEET 3
MISSOURI
Public Service Commission



By R. R. SHOCKLEY, Vice President, Missouri
Southwestern Bell Telephone Company
St. Louis, Missouri

Issued: April 15, 1977

FILED
OCT 1 1977
Public Service Commission
Effective: Oct 1, 1977

SBC PSC MO #17
Kirksville, Missouri
3rd Revised Sheet 2
Replacing 2nd Revised Sheet 2

Non-Scannable Map

(Is viewable in the Data Center
200 Madison Street, 1st Floor
Jefferson City MO)

NO SUPPLEMENT TO THIS TARIFF WILL BE ISSUED EXCEPT FOR THE PURPOSE OF CANCELING THIS TARIFF.

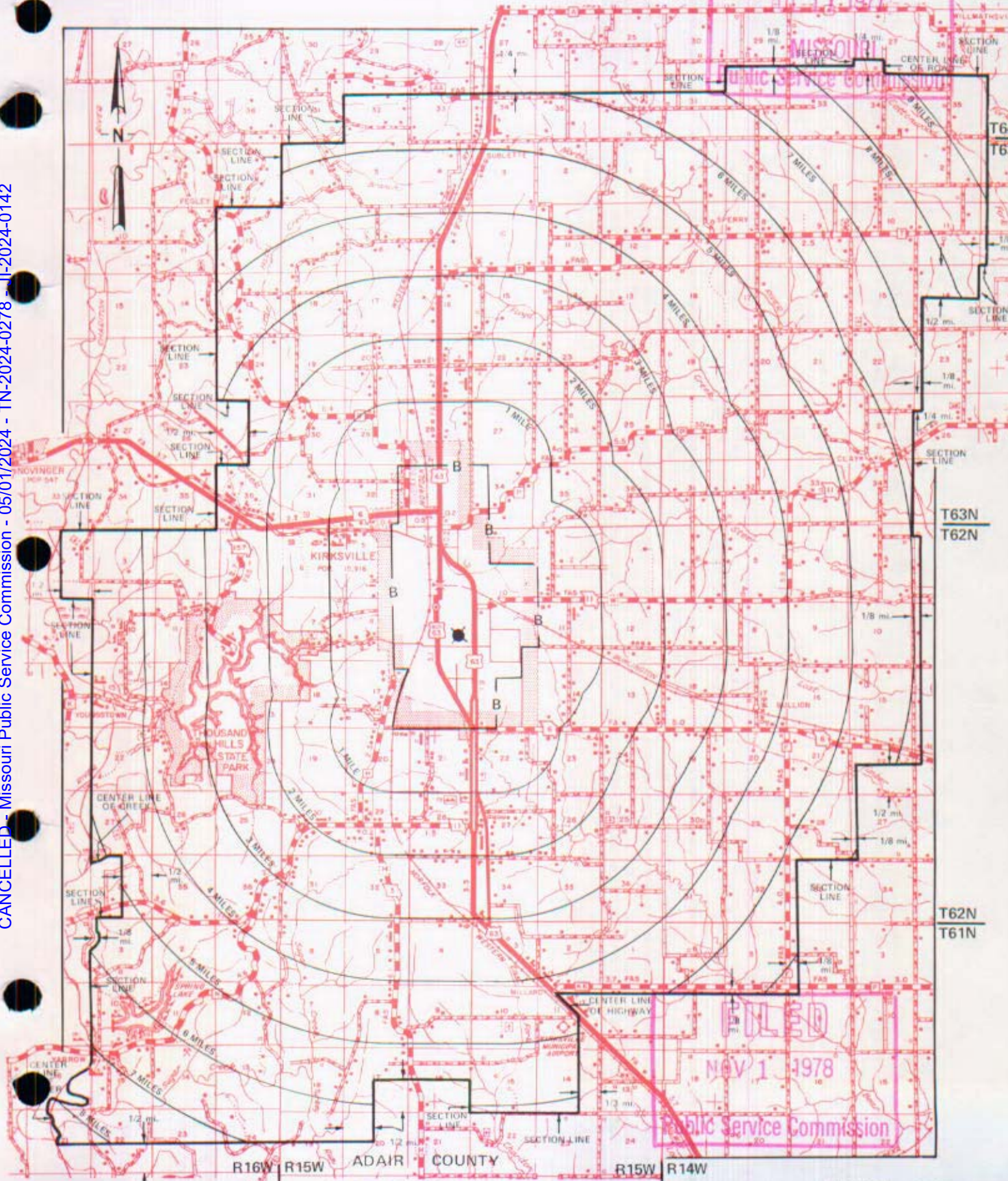
P. S. C. Mo. No. 17

EXCHANGE AREA MAP

Kirkville, Missouri
16th REVISED SHEET 3
REPLACING 15th REVISED SHEET 3

411 11 1977

CANCELLED - Missouri Public Service Commission - 05/01/2024 - TN-2024-0278 - II-2024-0142



NOV 1 1978

R16W R15W ADAIR COUNTY R15W R14W

By R. R. SHOCKLEY, Vice President, Missouri
Southwestern Bell Telephone Company
St. Louis, Missouri

NOV 1 - 1978

Issued: July 11, 1977

Effective: _____

CANCELLED - Missouri Public Service Commission - 05/01/2024 - TN-2024-0278 - JI-2024-0142

KIRKWOOD

see

St. Louis District Exchange Rates

under

"St. Louis"

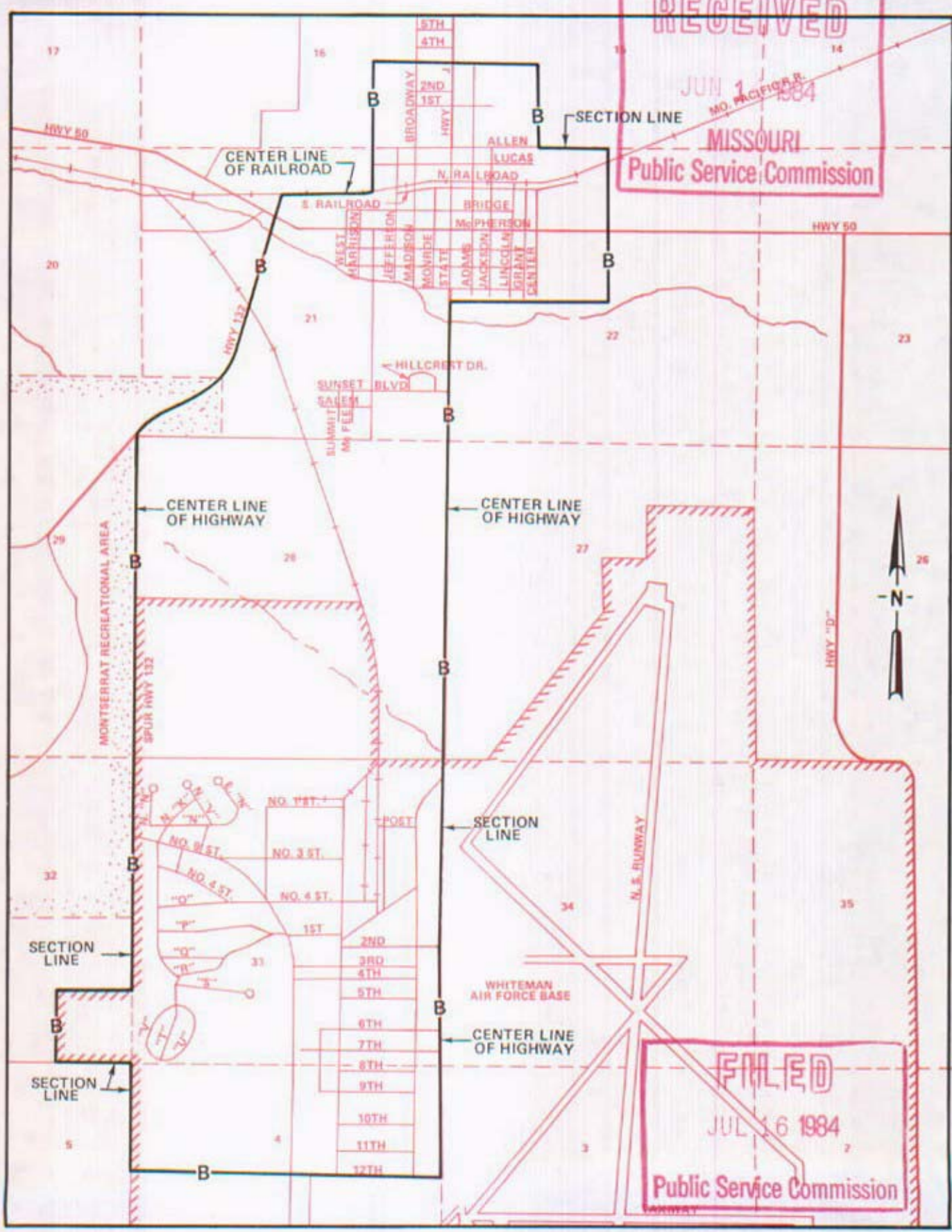
June 1, 1937

NO SUPPLEMENT TO THIS TARIFF WILL BE ISSUED EXCEPT FOR THE PURPOSE OF CANCELING THIS TARIFF.

P. S. C. Mo. No. 17

Knob Noster, Missouri
5th REVISED SHEET 2
REPLACING 4th REVISED SHEET 2

BASE RATE AREA MAP



CANCELLED - Missouri Public Service Commission - 05/01/2024 - TN-2024-0278 - JI-2024-0142

RECEIVED
JUN 1 1984
MO. PUBLIC SERVICE COMMISSION

FILED
JUL 16 1984
Public Service Commission

NO SUPPLEMENT TO THIS TARIFF WILL BE ISSUED EXCEPT FOR THE PURPOSE OF CANCELING THIS TARIFF.

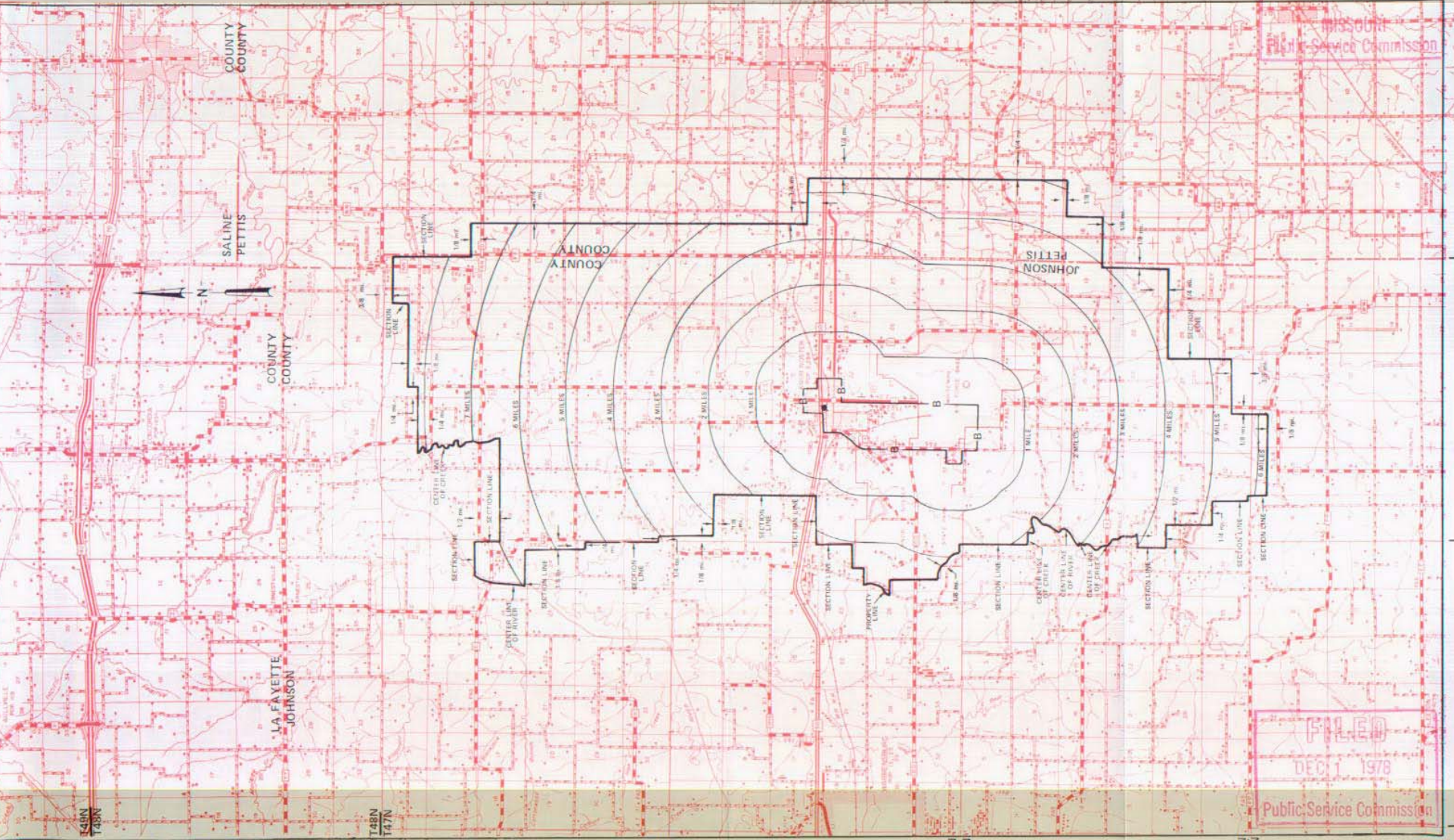
P. S. C. Mo. No. 17
EXCHANGE AREA MAP

Knob Noster, Missouri
7th REVISED SHEET 3
REPLACING 6th REVISED SHEET 3

FEB 14 1977

Missouri
Public Service Commission

CANCELLED - Missouri Public Service Commission - 05/01/2024 - TN-2024-0278 - JI-2024-0142



FILED
DEC 1 1978

Public Service Commission

By R. R. SHOCKLEY, Vice President, Missouri
Southwestern Bell Telephone Company
St. Louis, Missouri

Issued: February 15, 1977

DEC 1 1978

Effective: