

LADUE

see

St. Louis District Exchange Rates

under

"St. Louis"

June 1, 1937

SBC PSC MO #17

Lake Ozark-Osage Beach, Missouri

Osage Beach Base Rate Area

Original Sheet 2-A

Replacing 2nd Revised Sheet 2

Of the Ozark Central Telephone Company

P.S.C. Mo. No. 1

Non-Scannable Map

**(Is viewable in the Data Center
200 Madison Street, 1st Floor
Jefferson City MO)**

SBC PSC MO #17

Lake Ozark-Osage Beach, Missouri

Lake Ozark- Base Rate Area

Original Sheet 2

Replacing Original Sheet 3

Of the Ozark Central Telephone Company

P.S.C. Mo. No. 1

Non-Scannable Map

(Is viewable in the Data Center
200 Madison Street, 1st Floor
Jefferson City MO)

SBC PSC MO #17

Lake Ozark-Osage Beach, Missouri

7th Revised Sheet 3

Replacing 6th Revised Sheet 3

Non-Scannable Map

(Is viewable in the Data Center
200 Madison Street, 1st Floor
Jefferson City MO)

SBC PSC MO #17
Lamar, Missouri
2nd Revised Sheet 2
Replacing 1st Revised Sheet 2

Non-Scannable Map

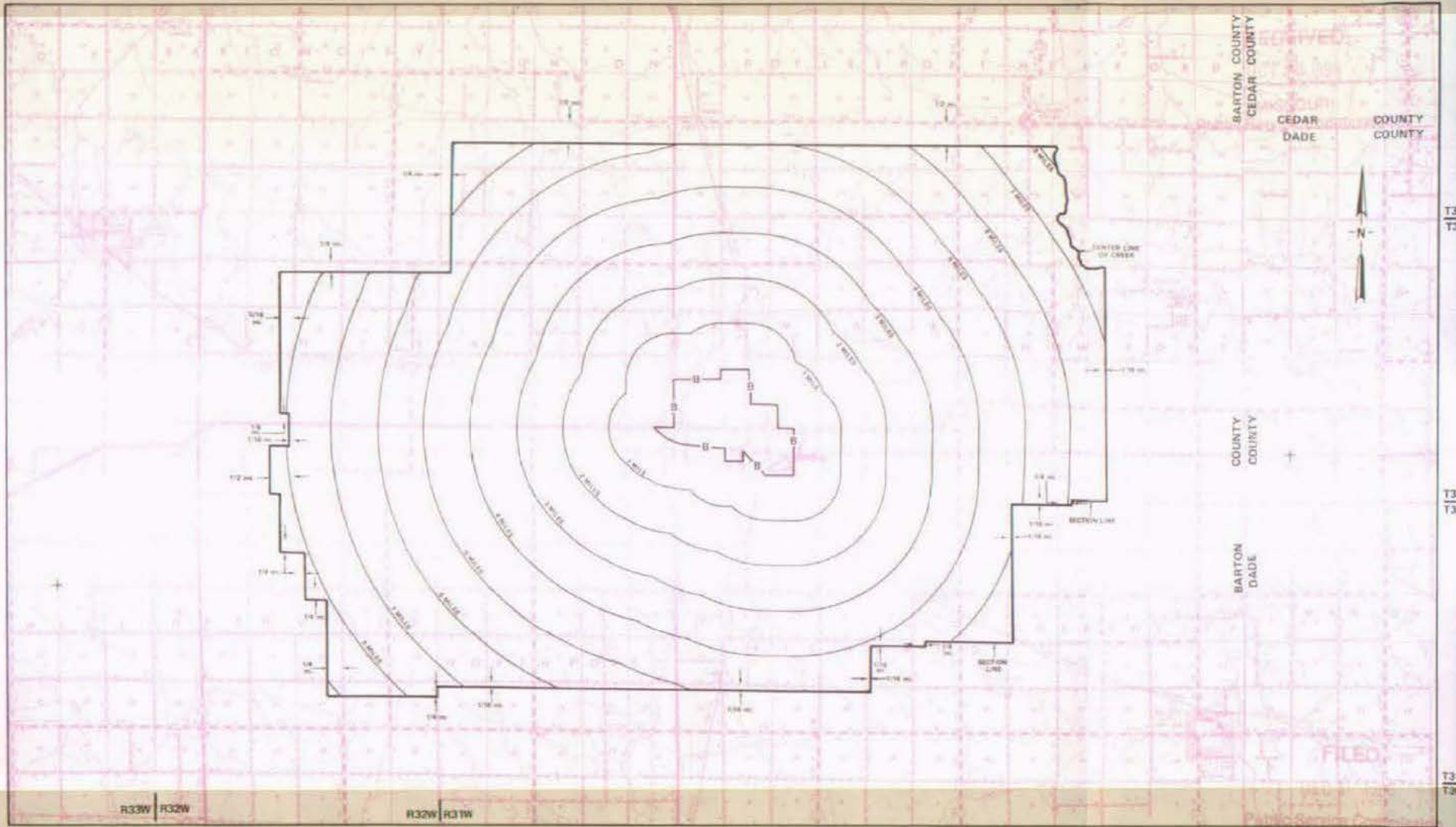
(Is viewable in the Data Center
200 Madison Street, 1st Floor
Jefferson City MO)

NO SUPPLEMENT TO THIS TARIFF WILL BE ISSUED EXCEPT FOR THE PURPOSE OF CANCELING THIS TARIFF.

P. S. C. Mo. No. 17 EXCHANGE AREA MAP

Lamar, Missouri

10th REVISED SHEET 3
REPLACING 9th REVISED SHEET 3



CANCELLED - Missouri Public Service Commission - 05/01/2024 - TN-2024-0278 - JI-2024-0142

Issued: November 1, 1988

By R. D. BARRON, President, Missouri Division
Southwestern Bell Telephone Company
St. Louis, Missouri

R31W | R30W

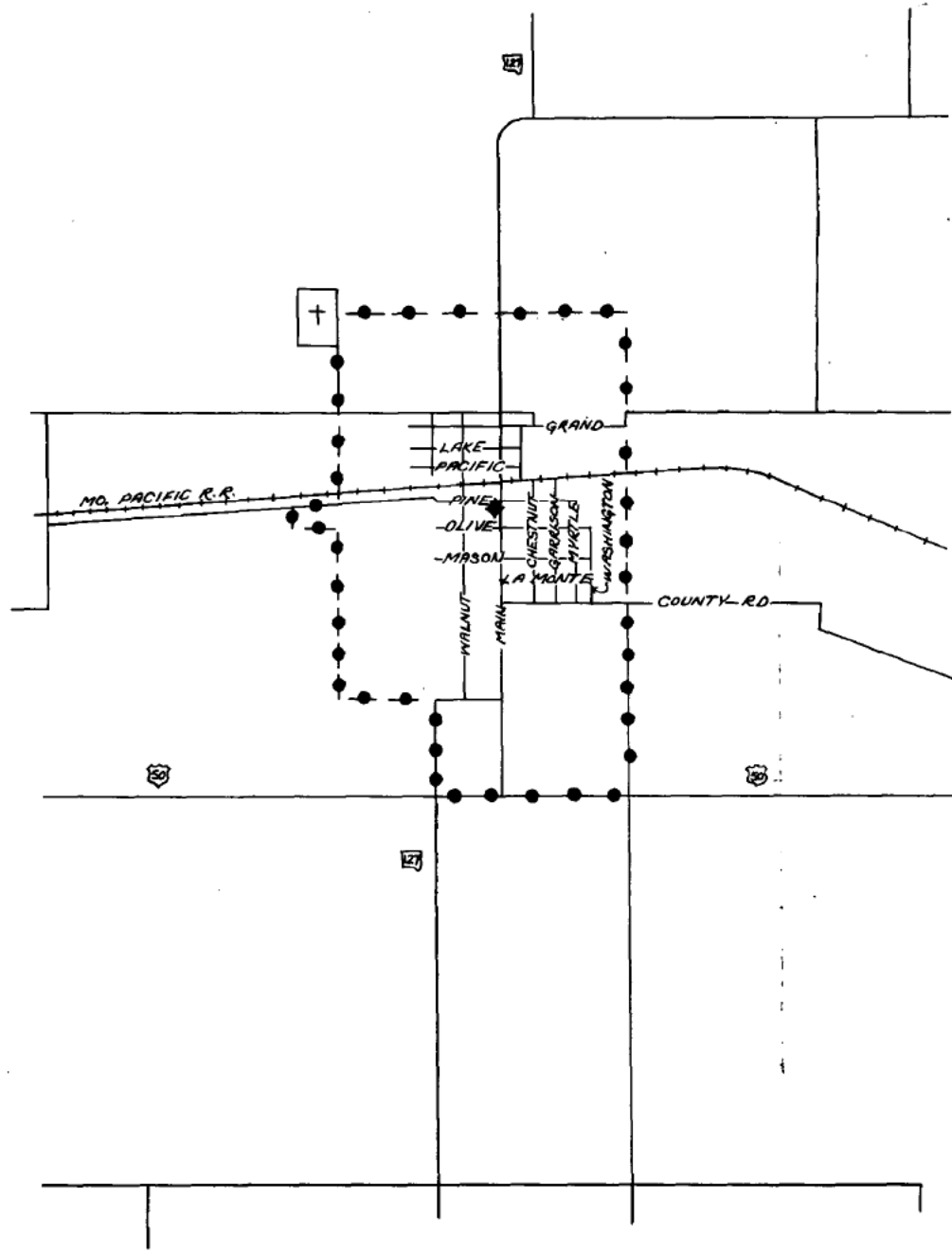
R30W | R29W

R29W | R28W

Effective: December 1, 1988

CANCELLED - Missouri Public Service Commission - 05/01/2024 - TN-2024-0278 - JI-2024-0142

LA MONTE, MO.



CODE
 BELL CENTRAL OFFICE:
 BASE RATE AREA LIMITS:

Issued: March 19, 1952

Effective: April 18, 1952

By H. R. TOWLES, General Manager
Southwestern Bell Telephone Company
St. Louis, Missouri

NO SUPPLEMENT TO THIS TARIFF WILL BE ISSUED EXCEPT FOR THE PURPOSE OF CANCELING THIS TARIFF.

P. S. C. Mo. No. 17 EXCHANGE AREA MAP

La Monte, Missouri

5 4th REVISED SHEET 3
REPLACING 3rd REVISED SHEET 3

4

Missouri Public Service Commission

REC'D MAR 19 1999

T48N
T47N



JOHNSON COUNTY
PETTIS COUNTY

JOHNSON COUNTY
PETTIS COUNTY

Proposed NEW Boundary

T47N
T46N

T46N
T45N

Missouri Public Service Commission

FILED APR 19 1999

MAR 19 1999

R24W

R23W

R23W

R22W

APR 19 1999

By Priscilla Hill-Ardoin

By R. R. SHOCKLEY, Vice President, Missouri

Southwestern Bell Telephone Company

JUL 19 1978

May 10, 1977

Effective

CANCELLED - Missouri Public Service Commission - 05/01/2024 - TN-2024-0278 - JI-2024-0142

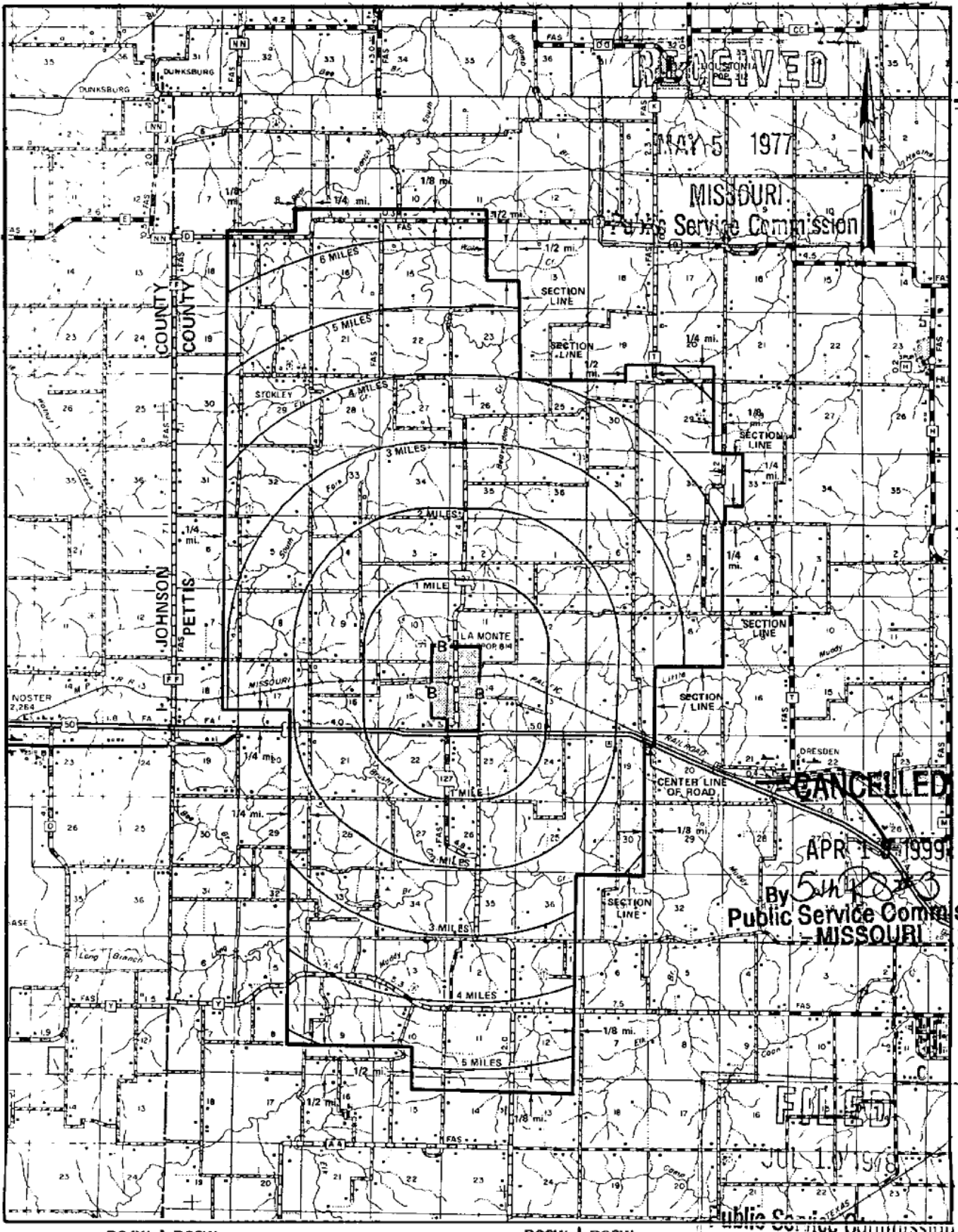
NO SUPPLEMENT TO THIS TARIFF WILL BE ISSUED EXCEPT FOR THE PURPOSE OF CANCELING THIS TARIFF.

P. S. C. No. 17

La Monte, Missouri

4th REVISED SHEET 3
REPLACING 3rd REVISED SHEET 3

EXCHANGE AREA MAP



R24W | R23W

R23W | R22W

By R. R. SHOCKLEY, Vice President, Missouri

Southwestern Bell Telephone Company

St. Louis, Missouri

Issued: May 10, 1977

Effective: JUL 10 1978

SBC PSC MO #17
Lancaster, Missouri
1st Revised Sheet 2
Replacing Original Sheet 2

Non-Scannable Map

(Is viewable in the Data Center
200 Madison Street, 1st Floor
Jefferson City MO)

NO SUPPLEMENT TO THIS TARIFF WILL BE ISSUED EXCEPT FOR THE PURPOSE OF CANCELING THIS TARIFF.

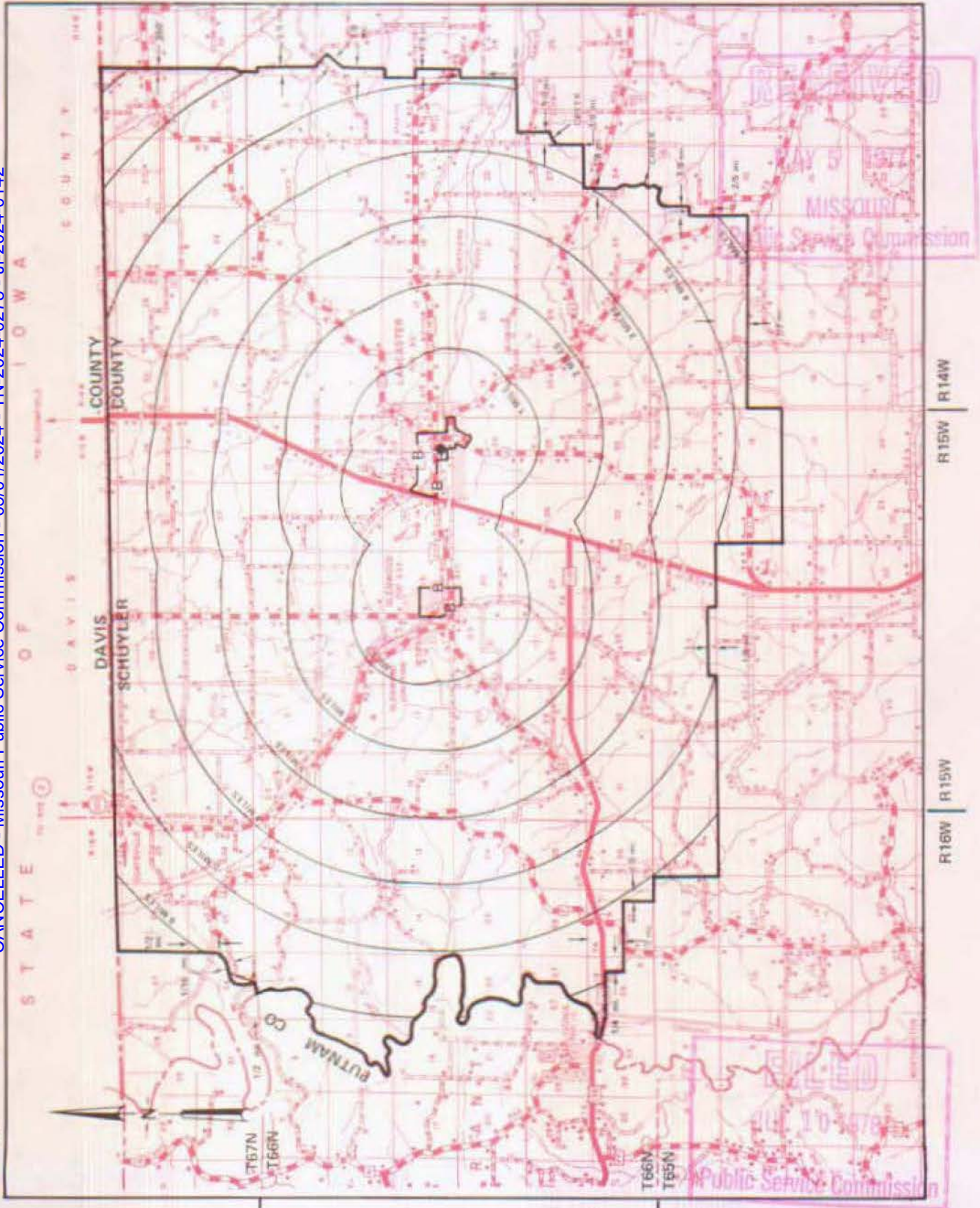
P. S. C. Mo. No. 17

Lancaster, Missouri

EXCHANGE AREA MAP

6th REVISED SHEET 3
REPLACING 5th REVISED SHEET 3

CANCELLED - Missouri Public Service Commission - 05/01/2024 - TN-2024-0278 - JI-2024-0142



By R. R. SHOCKLEY, Vice President, Missouri
Southwestern Bell Telephone Company

Issued: May 10, 1977

JUL 10 1978

SBC PSC MO #17
Leadwood, Missouri
2nd Revised Sheet 2
Replacing 1st Revised Sheet 2

Non-Scannable Map

(Is viewable in the Data Center
200 Madison Street, 1st Floor
Jefferson City MO)

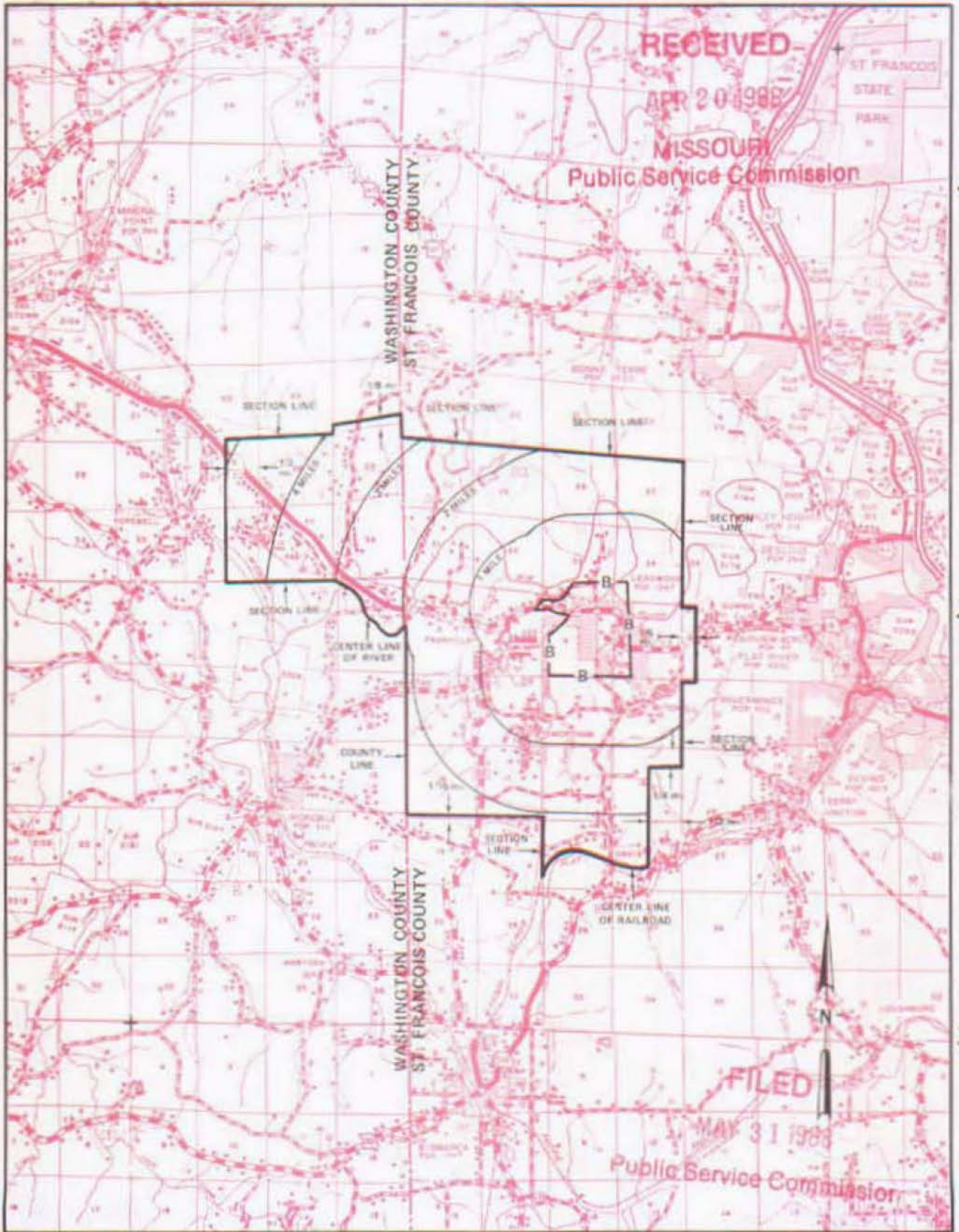
NO SUPPLEMENT TO THIS TARIFF WILL BE ISSUED EXCEPT FOR THE PURPOSE OF CANCELING THIS TARIFF.

P. S. C. Mo. No. 17

Leadwood, Missouri

7th REVISED SHEET 3
REPLACING 6th REVISED SHEET 3

EXCHANGE AREA MAP



CANCELLED - Missouri Public Service Commission - 05/01/2024 - TN-2024-0278 - JI-2024-0142

By R. D. BARRON, President, Missouri Division
Southwestern Bell Telephone Company
St. Louis, Missouri

Issued: APRIL 29, 1988

Effective: MAY 31, 1988



**Southwestern Bell
Telephone**

100 North Tucker Boulevard
St. Louis, Missouri 63101
Phone (314) 247-9800

May 4, 1987

RECEIVED

MAY 6 1987

Mr. Ralph Gladden
Rate and Tariff Examiner
Missouri Public Service Commission
P.O. Box 360
Jefferson City, Missouri 65102

**MISSOURI
Public Service Commission**

Dear Mr. Gladden:

This concerns our previous discussions regarding the boundary discrepancy between the Farley Exchange, located in Missouri and the Missouri Portion of the Leavenworth-Lansing, Kansas Exchange. I have attached copies of both of these exchange area maps depicting the location of the discrepancy.

Our Kansas coordinates have agreed that the Farley, Missouri Exchange Map is correct and the Missouri Portion of the Leavenworth-Lansing, Kansas Exchange Area Map will require revisions. The Kansas Rate Administration office will take responsibility for correcting this map.

As soon as we receive these revised maps, I will file a corrected copy with the Commission.

If you have any questions concerning this matter, please contact me on (314) 247-5765.

Very truly yours,

Staff Manager
Rate Administration

Attachments

CANCELLED - Missouri Public Service Commission - 05/01/2024 - TN-2024-0278 - JI-2024-0142

P.S.C. Mo. - No. 17
LOCAL EXCHANGE - MISSOURI PORTION TARIFF

Southwestern Bell Telephone
Company d/b/a AT&T Missouri

Section 5
46th Revised Sheet 1
Replacing 45th Revised Sheet 1

MISSOURI PORTION - LEAVENWORTH-LANSING, KANSAS EXCHANGE

1. GENERAL

This Tariff is governed, except as otherwise specified herein, by all other Tariffs of the Southwestern Bell Telephone Company on file in the State of Missouri, which are hereby made a part of this Tariff. Unless otherwise specified, the charges quoted in this Tariff or in any other Missouri Tariff are for periods of one month, are payable monthly in advance and entitle the customer to exchange telephone service within the Leavenworth-Lansing, Exchange Area.

2. RATES

- A. The rates for main service do not include a Telephone Company-provided instrument, except for Semi-Public Service, which includes one station equipped with a coin-collecting device.
- B. Within the Missouri portion of the Exchange Area:

1. Flat Rate Service	Current Rates(1)(2)	
	<u>Business</u>	<u>Residence</u>
One-Party	\$75.50	\$24.00 (CR)
Two-Party	N/A	9.00
Lifeline	N/A	(3)
One-Party Multiline	75.50	N/A
PBX Trunk	75.50	15.85

- (1) For the period of November 26, 2008 through November 25, 2012, prices for residence basic local service in this exchange will be governed by Section 392.245.5(7) RSMo.
- (2) For the period of November 26, 2008 through November 25, 2012, prices for business basic local service in this exchange will be governed by Section 392.245.5(7) RSMo
- (3) A customer eligible under established criteria can receive a discount from his or her bill for residential essential local telecommunications services, in accordance with P.S.C. Mo. – No. 24, Local Exchange Tariff, Section 1.2.2.E, regarding Lifeline Service.

Issued: December 24, 2013

By JOHN SONDAG, President - Missouri
St. Louis, Missouri

Effective: January 3, 2014

CANCELLED
May 1, 2014
Missouri Public
Service Commission
.II-2014-0379

FILED
Missouri Public
Service Commission
JI-2014-0269

P.S.C. Mo. - No. 17
LOCAL EXCHANGE - MISSOURI PORTION TARIFF

Southwestern Bell Telephone
Company d/b/a AT&T Missouri

Section 5
45th Revised Sheet 1
Replacing 44th Revised Sheet 1

MISSOURI PORTION - LEAVENWORTH-LANSING, KANSAS EXCHANGE

1. GENERAL

This Tariff is governed, except as otherwise specified herein, by all other Tariffs of the Southwestern Bell Telephone Company on file in the State of Missouri, which are hereby made a part of this Tariff. Unless otherwise specified, the charges quoted in this Tariff or in any other Missouri Tariff are for periods of one month, are payable monthly in advance and entitle the customer to exchange telephone service within the Leavenworth-Lansing, Exchange Area.

2. RATES

- A. The rates for main service do not include a Telephone Company-provided instrument, except for Semi-Public Service, which includes one station equipped with a coin-collecting device.
- B. Within the Missouri portion of the Exchange Area:

1. Flat Rate Service	Current Rates(1)(2)	
	<u>Business</u>	<u>Residence</u>
One-Party	\$75.50 (CR)	\$23.00
Two-Party	N/A	9.00
Lifeline	N/A	(3)
One-Party Multiline	75.50 (CR)	N/A
PBX Trunk	75.50 (CR)	15.85

- (1) For the period of November 26, 2008 through November 25, 2012, prices for residence basic local service in this exchange will be governed by Section 392.245.5(7) RSMo.
- (2) For the period of November 26, 2008 through November 25, 2012, prices for business basic local service in this exchange will be governed by Section 392.245.5(7) RSMo
- (3) A customer eligible under established criteria can receive a discount from his or her bill for residential essential local telecommunications services, in accordance with P.S.C. Mo. – No. 24, Local Exchange Tariff, Section 1.2.2.E, regarding Lifeline Service.

Issued: November 21, 2013

Effective: December 1, 2013

CANCELLED
January 3, 2014
Missouri Public
Service Commission
JI-2014-0269

By JOHN SONDAG, President - Missouri
St. Louis, Missouri

FILED
Missouri Public
Service Commission
JI-2014-0226

P.S.C. Mo. - No. 17
LOCAL EXCHANGE - MISSOURI PORTION TARIFF

Southwestern Bell Telephone
Company d/b/a AT&T Missouri

Section 5
44th Revised Sheet 1
Replacing 43rd Revised Sheet 1

MISSOURI PORTION - LEAVENWORTH-LANSING, KANSAS EXCHANGE

1. GENERAL

This Tariff is governed, except as otherwise specified herein, by all other Tariffs of the Southwestern Bell Telephone Company on file in the State of Missouri, which are hereby made a part of this Tariff. Unless otherwise specified, the charges quoted in this Tariff or in any other Missouri Tariff are for periods of one month, are payable monthly in advance and entitle the customer to exchange telephone service within the Leavenworth-Lansing, Exchange Area.

2. RATES

- A. The rates for main service do not include a Telephone Company-provided instrument, except for Semi-Public Service, which includes one station equipped with a coin-collecting device.
- B. Within the Missouri portion of the Exchange Area:

1. Flat Rate Service	<u>Current Rates(1)(2)</u>	
	<u>Business</u>	<u>Residence</u>
One-Party	\$59.00 (CR)	\$23.00
Two-Party	N/A	9.00
Lifeline	N/A	(3)
One-Party Multiline	65.00 (CR)	N/A
PBX Trunk	65.00 (CR)	15.85

- (1) For the period of November 26, 2008 through November 25, 2012, prices for residence basic local service in this exchange will be governed by Section 392.245.5(7) RSMo.
- (2) For the period of November 26, 2008 through November 25, 2012, prices for business basic local service in this exchange will be governed by Section 392.245.5(7) RSMo
- (3) A customer eligible under established criteria can receive a discount from his or her bill for residential essential local telecommunications services, in accordance with P.S.C. Mo. – No. 24, Local Exchange Tariff, Section 1.2.2.E, regarding Lifeline Service.

Issued: June 25, 2013

Effective: July 5, 2013

CANCELLED
December 1, 2013
Missouri Public
Service Commission
JI-2014-0226

By JOHN SONDAG, President - Missouri
St. Louis, Missouri

FILED
Missouri Public
Service Commission
JI-2013-0608

P.S.C. Mo. - No. 17
LOCAL EXCHANGE - MISSOURI PORTION TARIFF

Southwestern Bell Telephone
Company d/b/a AT&T Missouri

Section 5
43rd Revised Sheet 1
Replacing 42nd Revised Sheet 1

MISSOURI PORTION - LEAVENWORTH-LANSING, KANSAS EXCHANGE

1. GENERAL

This Tariff is governed, except as otherwise specified herein, by all other Tariffs of the Southwestern Bell Telephone Company on file in the State of Missouri, which are hereby made a part of this Tariff. Unless otherwise specified, the charges quoted in this Tariff or in any other Missouri Tariff are for periods of one month, are payable monthly in advance and entitle the customer to exchange telephone service within the Leavenworth-Lansing, Exchange Area.

2. RATES

- A. The rates for main service do not include a Telephone Company-provided instrument, except for Semi-Public Service, which includes one station equipped with a coin-collecting device.
- B. Within the Missouri portion of the Exchange Area:

1. Flat Rate Service	<u>Current Rates(1)(2)</u>		
	<u>Business</u>	<u>Residence</u>	
One-Party	\$48.00	\$23.00	(CR)
Two-Party	N/A	9.00	
Lifeline	N/A	(3)	
One-Party Multiline	62.00	N/A	(CR)
PBX Trunk	62.00 (CR)	15.85	

- (1) For the period of November 26, 2008 through November 25, 2012, prices for residence basic local service in this exchange will be governed by Section 392.245.5(7) RSMo.
- (2) For the period of November 26, 2008 through November 25, 2012, prices for business basic local service in this exchange will be governed by Section 392.245.5(7) RSMo
- (3) A customer eligible under established criteria can receive a discount from his or her bill for residential essential local telecommunications services, in accordance with P.S.C. Mo. – No. 24, Local Exchange Tariff, Section 1.2.2.E, regarding Lifeline Service.

Issued: December 24, 2012

Effective: January 3, 2013

CANCELLED
July 5, 2013
Missouri Public
Service Commission
JI-2013-0608

By JOHN SONDAG, President - Missouri
St. Louis, Missouri

FILED
Missouri Public
Service Commission
JI-2013-0285

P.S.C. Mo. - No. 17
LOCAL EXCHANGE - MISSOURI PORTION TARIFF

Southwestern Bell Telephone
Company d/b/a AT&T Missouri

Section 5
42nd Revised Sheet 1
Replacing 41st Revised Sheet 1

MISSOURI PORTION - LEAVENWORTH-LANSING, KANSAS EXCHANGE

1. GENERAL

This Tariff is governed, except as otherwise specified herein, by all other Tariffs of the Southwestern Bell Telephone Company on file in the State of Missouri, which are hereby made a part of this Tariff. Unless otherwise specified, the charges quoted in this Tariff or in any other Missouri Tariff are for periods of one month, are payable monthly in advance and entitle the customer to exchange telephone service within the Leavenworth-Lansing, Exchange Area.

2. RATES

- A. The rates for main service do not include a Telephone Company-provided instrument, except for Semi-Public Service, which includes one station equipped with a coin-collecting device.
- B. Within the Missouri portion of the Exchange Area:

1. Flat Rate Service	<u>Current Rates(1)(2)</u>	
	<u>Business</u>	<u>Residence</u>
One-Party	\$39.00	\$20.00 (CR)
Two-Party	N/A	9.00
Lifeline	N/A	(3)
One-Party Multiline	54.50	N/A
PBX Trunk	54.50	15.85

- (1) For the period of November 26, 2008 through November 25, 2012, prices for residence basic local service in this exchange will be governed by Section 392.245.5(7) RSMo.
- (2) For the period of November 26, 2008 through November 25, 2012, prices for business basic local service in this exchange will be governed by Section 392.245.5(7) RSMo
- (3) A customer eligible under established criteria can receive a discount from his or her bill for residential essential local telecommunications services, in accordance with P.S.C. Mo. – No. 24, Local Exchange Tariff, Section 1.2.2.E, regarding Lifeline Service.

Issued: July 3, 2012

Effective: July 13, 2012

CANCELLED
January 3, 2013
Missouri Public
Service Commission
JI-2013-0285

By JOHN SONDAG, President - Missouri
St. Louis, Missouri

FILED
Missouri Public
Service Commission
JI-2013-0013

P.S.C. Mo. - No. 17
LOCAL EXCHANGE - MISSOURI PORTION TARIFF

Southwestern Bell Telephone
Company d/b/a AT&T Missouri

Section 5
41st Revised Sheet 1
Replacing 40th Revised Sheet 1

MISSOURI PORTION - LEAVENWORTH-LANSING, KANSAS EXCHANGE

1. GENERAL

This Tariff is governed, except as otherwise specified herein, by all other Tariffs of the Southwestern Bell Telephone Company on file in the State of Missouri, which are hereby made a part of this Tariff. Unless otherwise specified, the charges quoted in this Tariff or in any other Missouri Tariff are for periods of one month, are payable monthly in advance and entitle the customer to exchange telephone service within the Leavenworth-Lansing, Exchange Area.

2. RATES

- A. The rates for main service do not include a Telephone Company-provided instrument, except for Semi-Public Service, which includes one station equipped with a coin-collecting device.
- B. Within the Missouri portion of the Exchange Area:

1. Flat Rate Service	<u>Current Rates(1)(2)</u>	
	<u>Business</u>	<u>Residence</u>
One-Party	\$39.00 (CR)	\$17.00
Two-Party	N/A	9.00
Lifeline	N/A	(3)
One-Party Multiline	54.50 (CR)	N/A
PBX Trunk	54.50 (CR)	15.85

- (1) For the period of November 26, 2008 through November 25, 2012, prices for residence basic local service in this exchange will be governed by Section 392.245.5(7) RSMo.
- (2) For the period of November 26, 2008 through November 25, 2012, prices for business basic local service in this exchange will be governed by Section 392.245.5(7) RSMo
- (3) A customer eligible under established criteria can receive a discount from his or her bill for residential essential local telecommunications services, in accordance with P.S.C. Mo. – No. 24, Local Exchange Tariff, Section 1.2.2.E, regarding Lifeline Service.

Issued: June 25, 2012

Effective: July 5, 2012

CANCELLED
July 13, 2012
Missouri Public
Service Commission
JI-2013-0013

By JOHN SONDAG, President - Missouri
St. Louis, Missouri

FILED
Missouri Public
Service Commission
JI-2012-0834

P.S.C. Mo. - No. 17
LOCAL EXCHANGE - MISSOURI PORTION TARIFF

Southwestern Bell Telephone
Company d/b/a AT&T Missouri

Section 5
40th Revised Sheet 1
Replacing 39th Revised Sheet 1

MISSOURI PORTION - LEAVENWORTH-LANSING, KANSAS EXCHANGE

1. GENERAL

This Tariff is governed, except as otherwise specified herein, by all other Tariffs of the Southwestern Bell Telephone Company on file in the State of Missouri, which are hereby made a part of this Tariff. Unless otherwise specified, the charges quoted in this Tariff or in any other Missouri Tariff are for periods of one month, are payable monthly in advance and entitle the customer to exchange telephone service within the Leavenworth-Lansing, Exchange Area.

2. RATES

- A. The rates for main service do not include a Telephone Company-provided instrument, except for Semi-Public Service, which includes one station equipped with a coin-collecting device.
- B. Within the Missouri portion of the Exchange Area:

1. Flat Rate Service	<u>Current Rates(1)(2)</u>	
	<u>Business</u>	<u>Residence</u>
One-Party	\$34.00 (CR)	\$17.00
Two-Party	N/A	9.00
Lifeline	N/A	(3)
One-Party Multiline	43.00 (CR)	N/A
PBX Trunk	43.00 (CR)	15.85

- (1) For the period of November 26, 2008 through November 25, 2012, prices for residence basic local service in this exchange will be governed by Section 392.245.5(7) RSMo.
- (2) For the period of November 26, 2008 through November 25, 2012, prices for business basic local service in this exchange will be governed by Section 392.245.5(7) RSMo
- (3) A customer eligible under established criteria can receive a discount from his or her bill for residential essential local telecommunications services, in accordance with P.S.C. Mo. – No. 24, Local Exchange Tariff, Section 1.2.2.E, regarding Lifeline Service.

Issued: October 28, 2011

Effective: November 9, 2011

CANCELLED
July 5, 2012
Missouri Public
Service Commission
JI-2012-0834

By JOHN SONDAG, President - Missouri
St. Louis, Missouri

FILED
Missouri Public
Service Commission
JI-2012-0194

P.S.C. Mo. - No. 17
LOCAL EXCHANGE - MISSOURI PORTION TARIFF

Southwestern Bell Telephone
Company d/b/a AT&T Missouri

Section 5
39th Revised Sheet 1
Replacing 38th Revised Sheet 1

MISSOURI PORTION - LEAVENWORTH-LANSING, KANSAS EXCHANGE

1. GENERAL

This Tariff is governed, except as otherwise specified herein, by all other Tariffs of the Southwestern Bell Telephone Company on file in the State of Missouri, which are hereby made a part of this Tariff. Unless otherwise specified, the charges quoted in this Tariff or in any other Missouri Tariff are for periods of one month, are payable monthly in advance and entitle the customer to exchange telephone service within the Leavenworth-Lansing, Exchange Area.

2. RATES

- A. The rates for main service do not include a Telephone Company-provided instrument, except for Semi-Public Service, which includes one station equipped with a coin-collecting device.
- B. Within the Missouri portion of the Exchange Area:

1. Flat Rate Service	<u>Current Rates(1)(2)</u>	
	<u>Business</u>	<u>Residence</u>
One-Party	\$27.00	\$17.00 (CR)
Two-Party	N/A	9.00
Lifeline	N/A	(3)
One-Party Multiline	36.00	N/A
PBX Trunk	36.00	15.85

- (1) For the period of November 26, 2008 through November 25, 2012, prices for residence basic local service in this exchange will be governed by Section 392.245.5(7) RSMo.
- (2) For the period of November 26, 2008 through November 25, 2012, prices for business basic local service in this exchange will be governed by Section 392.245.5(7) RSMo
- (3) A customer eligible under established criteria can receive a discount from his or her bill for residential essential local telecommunications services, in accordance with P.S.C. Mo. – No. 24, Local Exchange Tariff, Section 1.2.2.E, regarding Lifeline Service.

Issued: July 1, 2011

CANCELED
November 9, 2011
Missouri Public
Service Commission
JI-2012-0194

By JOHN SONDAG, President - Missouri
St. Louis, Missouri

Effective: July 13, 2011

P.S.C. Mo. - No. 17
LOCAL EXCHANGE - MISSOURI PORTION TARIFF

Southwestern Bell Telephone
Company d/b/a AT&T Missouri

Section 5
38th Revised Sheet 1
Replacing 37th Revised Sheet 1

MISSOURI PORTION - LEAVENWORTH-LANSING, KANSAS EXCHANGE

1. GENERAL

This Tariff is governed, except as otherwise specified herein, by all other Tariffs of the Southwestern Bell Telephone Company on file in the State of Missouri, which are hereby made a part of this Tariff. Unless otherwise specified, the charges quoted in this Tariff or in any other Missouri Tariff are for periods of one month, are payable monthly in advance and entitle the customer to exchange telephone service within the Leavenworth-Lansing, Exchange Area.

2. RATES

- A. The rates for main service do not include a Telephone Company-provided instrument, except for Semi-Public Service, which includes one station equipped with a coin-collecting device.
- B. Within the Missouri portion of the Exchange Area:

1. Flat Rate Service	<u>Current Rates(1)(2)</u>	
	<u>Business</u>	<u>Residence</u>
One-Party	\$27.00 (CR)	\$15.12
Two-Party	N/A	9.00
Lifeline	N/A	(3)
One-Party Multiline	36.00	N/A
PBX Trunk	36.00	15.85

- (1) For the period of November 26, 2008 through November 25, 2012, prices for residence basic local service in this exchange will be governed by Section 392.245.5(7) RSMo.
- (2) For the period of November 26, 2008 through November 25, 2012, prices for business basic local service in this exchange will be governed by Section 392.245.5(7) RSMo
- (3) A customer eligible under established criteria can receive a discount from his or her bill for residential essential local telecommunications services, in accordance with P.S.C. Mo. – No. 24, Local Exchange Tariff, Section 1.2.2.E, regarding Lifeline Service.

Issued: May 18, 2011

CANCELED
JI-2011-0671
Missouri Public
Service Commission
JI-2011-0671

By JOHN SONDAG, President - Missouri
St. Louis, Missouri

Effective: May 28, 2011

FILED
Missouri Public
Service Commission
JI-2011-0578

P.S.C. Mo. - No. 17
LOCAL EXCHANGE - MISSOURI PORTION TARIFF

Southwestern Bell Telephone
Company d/b/a AT&T Missouri

Section 5
37th Revised Sheet 1
Replacing 36th Revised Sheet 1

MISSOURI PORTION - LEAVENWORTH-LANSING, KANSAS EXCHANGE

1. GENERAL

This Tariff is governed, except as otherwise specified herein, by all other Tariffs of the Southwestern Bell Telephone Company on file in the State of Missouri, which are hereby made a part of this Tariff. Unless otherwise specified, the charges quoted in this Tariff or in any other Missouri Tariff are for periods of one month, are payable monthly in advance and entitle the customer to exchange telephone service within the Leavenworth-Lansing, Exchange Area.

2. RATES

- A. The rates for main service do not include a Telephone Company-provided instrument, except for Semi-Public Service, which includes one station equipped with a coin-collecting device.
- B. Within the Missouri portion of the Exchange Area:

1. Flat Rate Service	Current Rates(1)(2)	
	<u>Business</u>	<u>Residence</u>
One-Party	\$26.00	\$15.12 (CR)
Two-Party	N/A	9.00
Lifeline	N/A	(3)
One-Party Multiline	36.00	N/A
PBX Trunk	36.00	15.85

- (1) For the period of November 26, 2008 through November 25, 2012, prices for residence basic local service in this exchange will be governed by Section 392.245.5(7) RSMo.
- (2) For the period of November 26, 2008 through November 25, 2012, prices for business basic local service in this exchange will be governed by Section 392.245.5(7) RSMo
- (3) A customer eligible under established criteria can receive a discount from his or her bill for residential essential local telecommunications services, in accordance with P.S.C. Mo. – No. 24, Local Exchange Tariff, Section 1.2.2.E, regarding Lifeline Service.

Issued: June 29, 2010

Effective: July 9, 2010

CANCELLED
May 28, 2011
Missouri Public
Service Commission
JI-2011-0578

By DAVID NICHOLS, President - Missouri
St. Louis, Missouri

FILED
Missouri Public
Service Commission
JI-2010-0755

P.S.C. Mo. - No. 17
LOCAL EXCHANGE - MISSOURI PORTION TARIFF

Southwestern Bell Telephone
Company d/b/a AT&T Missouri

Section 5
36th Revised Sheet 1
Replacing 35th Revised Sheet 1

MISSOURI PORTION - LEAVENWORTH-LANSING, KANSAS EXCHANGE

1. GENERAL

This Tariff is governed, except as otherwise specified herein, by all other Tariffs of the Southwestern Bell Telephone Company on file in the State of Missouri, which are hereby made a part of this Tariff. Unless otherwise specified, the charges quoted in this Tariff or in any other Missouri Tariff are for periods of one month, are payable monthly in advance and entitle the customer to exchange telephone service within the Leavenworth-Lansing, Exchange Area.

2. RATES

- A. The rates for main service do not include a Telephone Company-provided instrument, except for Semi-Public Service, which includes one station equipped with a coin-collecting device.
- B. Within the Missouri portion of the Exchange Area:

1. Flat Rate Service	<u>Current Rates(1)(2)</u>	
	<u>Business</u>	<u>Residence</u>
One-Party	\$26.00(CR)	\$12.12
Two-Party	N/A	9.00
Lifeline	N/A	(3)
One-Party Multiline	36.00(CR)	N/A
PBX Trunk	36.00(CR)	15.85

- (1) For the period of November 26, 2008 through November 25, 2012, prices for residence basic local service in this exchange will be governed by Section 392.245.5(7) RSMo.
- (2) For the period of November 26, 2008 through November 25, 2012, prices for business basic local service in this exchange will be governed by Section 392.245.5(7) RSMo
- (3) A customer eligible under established criteria can receive a discount from his or her bill for residential essential local telecommunications services, in accordance with P.S.C. Mo. – No. 24, Local Exchange Tariff, Section 1.2.2.E, regarding Lifeline Service.

Issued: December 28, 2009

CANCELLED
July 9, 2010
Missouri Public
Service Commission
JI-2010-0755

By DAVID NICHOLS, President - Missouri
St. Louis, Missouri

Effective: January 7, 2010

FILED
Missouri Public
Service Commission
JI-2010-0424

P.S.C. Mo. - No. 17
LOCAL EXCHANGE - MISSOURI PORTION TARIFF

Southwestern Bell Telephone
Company d/b/a AT&T Missouri

Section 5
35th Revised Sheet 1
Replacing 34th Revised Sheet 1

MISSOURI PORTION - LEAVENWORTH-LANSING, KANSAS EXCHANGE

(AT)

1. GENERAL

This Tariff is governed, except as otherwise specified herein, by all other Tariffs of the Southwestern Bell Telephone Company on file in the State of Missouri, which are hereby made a part of this Tariff. Unless otherwise specified, the charges quoted in this Tariff or in any other Missouri Tariff are for periods of one month, are payable monthly in advance and entitle the customer to exchange telephone service within the Leavenworth-Lansing, Exchange Area.

2. RATES

- A. The rates for main service do not include a Telephone Company-provided instrument, except for Semi-Public Service, which includes one station equipped with a coin-collecting device.
- B. Within the Missouri portion of the Exchange Area:

1. Flat Rate Service	Current Rates(1)(2)		(AT)
	Business	Residence	
One-Party	\$19.88	\$12.12	(CR)
Two-Party	N/A	9.00	(CR)
Lifeline	N/A	(3)	(CT)
One-Party Multiline	23.40	N/A	
PBX Trunk	33.45	15.85	

- (1) For the period of November 26, 2008 through November 25, 2012, prices for residence basic local service in this exchange will be governed by Section 392.245.5(7) RSMo. (AT)
- (2) For the period of November 26, 2008 through November 25, 2012, prices for business basic local service in this exchange will be governed by Section 392.245.5(7) RSMo (AT)
- (3) A customer eligible under established criteria can receive a discount from his or her bill for residential essential local telecommunications services, in accordance with P.S.C. Mo. – No. 24, Local Exchange Tariff, Section 1.2.2.E, regarding Lifeline Service. (CT)

Issued: July 2, 2009

Effective: July 12, 2009

CANCELLED
January 7, 2010
Missouri Public
Service Commission
JI-2010-0424

By DAVID NICHOLS, President - Missouri
St. Louis, Missouri

Filed
Missouri Public
Service Commission
JI-2010-0004

No Supplement to this tariff will be issued except for the purpose of canceling this tariff.

Missouri Portion-
Leavenworth-Lansing, Kansas Exchange
34th Revised Sheet 1
Replacing 33rd Revised Sheet 1

LOCAL EXCHANGE TARIFF

I. GENERAL

This Tariff is governed, except as otherwise specified herein, by all other Tariffs of the Southwestern Bell Telephone Company on file in the State of Missouri, which are hereby made a part of this Tariff. Unless otherwise specified, the charges quoted in this Tariff or in any other Missouri Tariff are for periods of one month, are payable monthly in advance and entitle the customer to exchange telephone service within the Leavenworth-Lansing, Exchange Area.

II. RATES

- A. The rates for main service do not include a Telephone Company-provided instrument, except for Semi-Public Service, which includes one station equipped with a coin-collecting device.
- B. Within the Missouri portion of the Exchange Area:

1. Flat Rate Service	Current Rates(1)	
	<u>Business</u>	<u>Residence</u>
One-Party	\$19.88(CR)	\$10.12(CR)
Two-Party	N/A	7.00(CR)
Lifeline	N/A	(2)
One-Party Multiline	23.40	N/A
PBX Trunk	33.45	15.85

- (1) See Sheet 2 for maximum allowable rates.
- (2) A customer eligible under established criteria can receive a discount from his or her bill for residential essential local telecommunications services, in accordance with P.S.C. Mo. – No. 24, Local Exchange Tariff, Section 1.2.2.E, regarding Lifeline Service.

Issued: October 17, 2005

Effective: December 1, 2005

By CINDY BRINKLEY, President-SBC Missouri
Southwestern Bell Telephone, L.P., d/b/a SBC Missouri
St. Louis, Missouri

No. Supplement to this tariff will be issued except for the purpose of canceling this tariff.

Missouri Portion-
Leavenworth-Lansing, Kansas Exchange
33rd Revised Sheet 1
Replacing 32nd Revised Sheet 1

(RT)

LOCAL EXCHANGE TARIFF

I. GENERAL

This Tariff is governed, except as otherwise specified herein, by all other Tariffs of the Southwestern Bell Telephone Company on file in the State of Missouri, which are hereby made a part of this Tariff. Unless otherwise specified, the charges quoted in this Tariff or in any other Missouri Tariff are for periods of one month, are payable monthly in advance and entitle the customer to exchange telephone service within the Leavenworth-Lansing, Exchange Area.

II. RATES

- A. The rates for main service do not include a Telephone Company-provided instrument, except for Semi-Public Service, which includes one station equipped with a coin-collecting device.
- B. Within the Missouri portion of the Exchange Area:

	Current Rates(1)	
	Business	Residence
1. Flat Rate Service		
One-Party	\$20.27	\$10.33
Two-Party	N/A	7.14
Lifeline	N/A	(2)
One-Party Multiline	23.40	N/A
PBX Trunk	33.45	15.85

(CT)(CR)

CANCELLED

DEC 01 2005

By *34th RS 1*
Public Service Commission
MISSOURI

- (1) See Sheet 2 for maximum allowable rates.
- (2) A customer eligible under established criteria can receive a discount from his or her bill for residential essential local telecommunications services, in accordance with P.S.C. Mo. – No. 24, Local Exchange Tariff, Section 1.2.2.E, regarding Lifeline Service.

(CT)
|
(CT)

Issued: April 1, 2005

Effective: May 1, 2005

By CINDY BRINKLEY, President-SBC Missouri
Southwestern Bell Telephone, L.P., d/b/a SBC Missouri
St. Louis, Missouri

TO-1998-0329

FILED
MO PSC

No Supplement to this tariff will be issued except for the purpose of canceling this tariff.

Missouri Portion-
Leavenworth-Lansing, Kansas, Exchange
32nd Revised Sheet 1
Replacing 31st Revised Sheet 1

SOUTHWESTERN BELL TELEPHONE COMPANY
LOCAL EXCHANGE TARIFF

I. GENERAL

This Tariff is governed, except as otherwise specified herein, by all other Tariffs of the Southwestern Bell Telephone Company on file in the State of Missouri, which are hereby made a part of this Tariff. Unless otherwise specified, the charges quoted in this Tariff or in any other Missouri Tariff are for periods of one month, are payable monthly in advance and entitle the customer to exchange telephone service within the Leavenworth-Lansing, Exchange Area.

II. RATES

- A. The rates for main service do not include a Telephone Company-provided instrument, except for Semi-Public Service, which includes one station equipped with a coin-collecting device.
- B. Within the Missouri portion of the Exchange Area:

1. Flat Rate Service	Current Rates(1)	
	Business	Residence
One-Party	\$20.27(CR)	\$10.33(CR)
Two-Party	N/A	7.14
Lifeline(2)	N/A	6.83(CR)
One-Party Multiline	23.40	N/A
PBX Trunk	33.45	15.85

CANCELLED

MAY 01 2005
BY 33rd RS 1
Public Service Commission
MISSOURI

- (1) See Sheet 2 for maximum allowable rates.
- (2) See P.S.C. Mo. – No. 24, Local Exchange Tariff, Section 1.2.2.E, for description, terms and conditions related to Lifeline Service.

Issued: October 15, 2004

Effective: December 1, 2004

By CINDY BRINKLEY, President-SBC Missouri
Southwestern Bell Telephone, L.P., d/b/a SBC Missouri
St. Louis, Missouri

**FILED
MO PSC**

No Supplement to this tariff will be issued except for the purpose of canceling this tariff.

Missouri Portion-
Leavenworth-Lansing, Kansas, Exchange
31st Revised Sheet 1
Replacing 30th Revised Sheet 1
Missouri Public

SOUTHWESTERN BELL TELEPHONE COMPANY Service Commission
LOCAL EXCHANGE TARIFF

REC'D MAY 10 2004

I. GENERAL

This Tariff is governed, except as otherwise specified herein, by all other Tariffs of the Southwestern Bell Telephone Company on file in the State of Missouri, which are hereby made a part of this Tariff. Unless otherwise specified, the charges quoted in this Tariff or in any other Missouri Tariff are for periods of one month, are payable monthly in advance and entitle the customer to exchange telephone service within the Leavenworth-Lansing, Exchange Area.

II. RATES

- A. The rates for main service do not include a Telephone Company-provided instrument, except for Semi-Public Service, which includes one station equipped with a coin-collecting device.
- B. Within the Missouri portion of the Exchange Area:

		Current Rates(1)	
		Business	Residence
(AT)	1. Flat Rate Service		
	One-Party	\$20.83	\$10.61
	Two-Party	N/A	7.34
	Lifeline(2)	N/A	7.11(NR)
	One-Party Multiline	23.40	N/A
	PBX Trunk	33.45	15.85

CANCELLED

DEC 01 2004
by 32ndRS 1
Public Service Commission
MISSOURI

- (RT)
- (FC) (1) See Sheet 2 for maximum allowable rates.
- (FC)(AT) (2) See P.S.C. Mo. – No. 24, Local Exchange Tariff, Section 1.2.2.E, for description, terms and conditions related to Lifeline Service.

Issued: May 10, 2004

Effective: June 9, 2004

By CINDY BRINKLEY, President-SBC Missouri
Southwestern Bell Telephone, L.P., d/b/a SBC Missouri
St. Louis, Missouri

Missouri Public
Service Commission

FILED JUN 09 2004

No Supplement to this tariff will be issued except for the purpose of canceling this tariff.

Missouri Portion-
Leavenworth-Lansing, Kansas, Exchange
30th Revised Sheet 1
Replacing 29th Revised Sheet 1
Missouri Public

SOUTHWESTERN BELL TELEPHONE COMPANY
LOCAL EXCHANGE TARIFF

REC'D OCT 15 2003

I. GENERAL

This Tariff is governed, except as otherwise specified herein, by all other Tariffs of the Missouri Service Commission Southwestern Bell Telephone Company on file in the State of Missouri, which are hereby made a part of this Tariff. Unless otherwise specified, the charges quoted in this Tariff or in any other Missouri Tariff are for periods of one month, are payable monthly in advance and entitle the customer to exchange telephone service within the Leavenworth-Lansing, Exchange Area.

II. RATES

- A. The rates for main service do not include a Telephone Company-provided instrument, except for Semi-Public Service, which includes one station equipped with a coin-collecting device.
- B. Within the Missouri portion of the Exchange Area:

1. Flat Rate Service	Current Rates(1)	
	Business	Residence
One-Party	\$20.83(CR)	\$10.61(CR)
Two-Party	NA	7.34
One-Party Multiline	23.40	NA
PBX Trunk	33.45	15.85

CANCELLED

JUN 09 2004
By 3156 RS/
Public Service Commission
MISSOURI

- (1) See Sheet 1.01 for Footnotes.
- (2) See Sheet 2 for maximum allowable rates.

Issued: October 15, 2003

Effective: December 1, 2003

By CINDY BRINKLEY, President-SBC Missouri
Southwestern Bell Telephone, L.P., d/b/a SBC Missouri
St. Louis, Missouri

Missouri Public
Service Commission

FILED DEC 01 2003

No Supplement to this tariff will be issued except for the purpose of canceling this tariff.

Missouri Portion-
Leavenworth-Lansing, Kansas, Exchange
29th Revised Sheet 1
Replacing 28th Revised Sheet 1

SOUTHWESTERN BELL TELEPHONE COMPANY
LOCAL EXCHANGE TARIFF

Missouri Public
Service Commission

I. GENERAL

REC'D OCT 15 2002

This Tariff is governed, except as otherwise specified herein, by all other Tariffs of the Southwestern Bell Telephone Company on file in the State of Missouri, which are hereby made a part of this Tariff. Unless otherwise specified, the charges quoted in this Tariff or in any other Missouri Tariff are for periods of one month, are payable monthly in advance and entitle the customer to exchange telephone service within the Leavenworth-Lansing, Exchange Area.

II. RATES

- A. The rates for main service do not include a Telephone Company-provided instrument, except for Semi-Public Service, which includes one station equipped with a coin-collecting device.
- B. Within the Missouri portion of the Exchange Area:

1. Flat Rate Service	Current Rates(1)	
	Business	Residence
One-Party	\$20.84(CR)	\$10.62(CR)
Two-Party	NA	7.34(CR)
One-Party Multiline	23.40	NA
PBX Trunk	33.45	15.85

CANCELLED

DEC 01 2003

30th RS
Public Service Commission
MISSOURI

Missouri Public
Service Commission

- (1) See Sheet 1.01 for Footnotes.
- (2) See Sheet 2 for maximum allowable rates.

FILED DEC 01 2002

Issued: October 15, 2002

Effective: December 1, 2002

By CINDY BRINKLEY, President-Missouri
Southwestern Bell Telephone, L.P., d/b/a Southwestern Bell Telephone Company
St. Louis, Missouri

No supplement to this tariff will be issued except for the purpose of canceling this tariff.

MISSOURI PORTION-
LEAVENWORTH-LANSING, KANSAS, EXCHANGE
28th Revised Sheet 1
Replacing 27th Revised Sheet 1

Missouri Public

SOUTHWESTERN BELL TELEPHONE COMPANY
LOCAL EXCHANGE TARIFF

REC'D OCT 01 2001

I. GENERAL

Service Commission

This Tariff is governed, except as otherwise specified herein, by all other Tariffs of the Southwestern Bell Telephone Company on file in the State of Missouri, which are hereby made a part of this Tariff. Unless otherwise specified, the charges quoted in this Tariff or in any other Missouri Tariff are for periods of one month, are payable monthly in advance and entitle the customer to exchange telephone service within the Leavenworth-Lansing, Exchange Area.

II. RATES

A. The rates for main service do not include a Telephone Company-provided instrument, except for Semi-Public Service, which includes one station equipped with a coin-collecting device.

B. Within the Missouri portion of the Exchange Area:

1. Flat Rate Service	CURRENT RATES (1)	
	Business	Residence
One-Party	\$20.65 (CR)	\$10.52 (CR)
Two-Party	N/A	7.28 (CR)
One-Party Multiline	23.40	N/A
PBX Trunk	33.45	15.85

CANCELLED

DEC 01 2002

JANRSI
Missouri Service Commission
11/2001

(1) See Sheet 1.01 for Footnotes.
(2) See Sheet 2 for maximum allowable rates.

Issued: October 1, 2001

Effective: December 1, 2001

By JAN NEWTON, President-Missouri
Southwestern Bell Telephone Company
St. Louis, Missouri

Missouri Public

FILED DEC 01 2001

Service Commission

No supplement to this tariff will be issued except for the purpose of canceling this tariff.

MISSOURI PORTION-
LEAVENWORTH-LANSING, KANSAS, EXCHANGE

27th Revised Sheet 1
Replacing 26th Revised Sheet 1

Missouri Public
Service Commission

SOUTHWESTERN BELL TELEPHONE COMPANY
LOCAL EXCHANGE TARIFF

REC'D OCT 02 2000

I. GENERAL

This Tariff is governed, except as otherwise specified herein, by all other Tariffs of the Southwestern Bell Telephone Company on file in the State of Missouri, which are hereby made a part of this Tariff. Unless otherwise specified, the charges quoted in this Tariff or in any other Missouri Tariff are for periods of one month, are payable monthly in advance and entitle the customer to exchange telephone service within the Leavenworth-Lansing, Exchange Area.

II. RATES

A. The rates for main service do not include a Telephone Company-provided instrument, except for Semi-Public Service, which includes one station equipped with a coin-collecting device.

B. Within the Missouri portion of the Exchange Area:

(AT)

1. Flat Rate Service

CURRENT RATES (1)

Business Residence

One-Party

\$20.81(CR)

\$10.60(CR)

Two-Party

N/A

7.33(CR)

(RT)

One-Party Multiline

23.40

N/A

PBX Trunk

33.45

15.85

CANCELLED

DEC 01 2000
JRS #1
Public Service Commission
MISSOURI

Missouri Public
Service Commission

FILED DEC 01 2000

(1) See Sheet 1.01 for Footnotes.

(AT) (2) See Sheet 2 for maximum allowable rates.

Issued: October 2, 2000

Effective: December 1, 2000

By JAN NEWTON, President-Missouri
Southwestern Bell Telephone Company
St. Louis, Missouri

RECEIVED

No supplement to this tariff will be issued except for the purpose of canceling this tariff.

MISSOURI PORTION-
LEAVENWORTH-LANSING, KANSAS, EXCHANGE
26th Revised Sheet 1
Replacing 25th Revised Sheet 1

MISSOURI
Public Service Commission

SOUTHWESTERN BELL TELEPHONE COMPANY
LOCAL EXCHANGE TARIFF

I. GENERAL

This Tariff is governed, except as otherwise specified herein, by all other Tariffs of the Southwestern Bell Telephone Company on file in the State of Missouri, which are hereby made a part of this Tariff. Unless otherwise specified, the charges quoted in this Tariff or in any other Missouri Tariff are for periods of one month, are payable monthly in advance and entitle the customer to exchange telephone service within the Leavenworth-Lansing Exchange Area.

II. RATES

- A. The rates for main service do not include a Telephone Company-provided instrument, except for Semi-Public Service, which includes one station equipped with a coin-collecting device.
- B. Within the Missouri Portion of the Exchange Area:

1. Flat Rate Service	<u>Business</u>	<u>Residence</u>
One-Party	\$21.00(1)	\$10.70(1) (DR)
Semi-Public	9.68	N/A
One-Party Multiline	23.40	N/A
PBX Trunk	33.45	15.85

(RT)

CANCELLED

DEC 01 2000
By 27hrs 1
Public Service Commission
MISSOURI

See Sheet 1.01 for Footnotes.

FILED

Issued: FEB 07 1997

Effective: ~~MAR 10 1997~~ MAR 17 1997

By KAREN JENNINGS, President-Missouri
Southwestern Bell Telephone Company
St. Louis, Missouri

MO. PUBLIC SERVICE COMM

No supplement to this tariff will be issued except for the purpose of canceling this tariff.

MISSOURI PORTION-LEAVENWORTH-LANSING, KANSAS, EXCHANGE
25th Revised Sheet 1
Replacing 24th Revised Sheet 1

RECEIVED

MAR 20 1989

SOUTHWESTERN BELL TELEPHONE COMPANY
LOCAL EXCHANGE TARIFF

I. GENERAL

MISSOURI

Public Service Commission

This Tariff is governed, except as otherwise specified herein, by all Tariffs of the Southwestern Bell Telephone Company on file in the State of Missouri, which are hereby made a part of this Tariff. Unless otherwise specified, the charges quoted in this Tariff or in any other Missouri Tariff are for periods of one month, are payable monthly in advance and entitle the customer to exchange telephone service within the Leavenworth-Lansing Exchange Area.

II. RATES

A. The rates for main service do not include a Telephone Company-provided instrument, except for Semi-Public Service, which includes one station equipped with a coin-collecting device.

B. Within the Missouri Portion of the Exchange Area:

1. Flat Rate Service

	<u>Business</u>	<u>Residence</u>
One-Party	(RT) \$21.00(1)	(RT) \$10.70(1)
Two-Party	N/A	(RT) 7.40(1)
Semi-Public	(RT) 9.68	N/A
One-Party Multiline	23.40	N/A
PBX Trunk	(RT) 33.45	(RT) 15.85

CANCELLED

MAR 17 1989
BY *26* *DR R.S. #1*
Public Service Commission
MISSOURI

FILED

MAY 27 1989

See Sheet 1.01 for Footnotes.

Public Service Commission

Issued: ~~MAR 27 1989~~

Effective: **MAY 27 1989**

By R. D. BARRON, President-Missouri Division
Southwestern Bell Telephone Company
St. Louis, Missouri

P.S.C. Mo. - No. 17
LOCAL EXCHANGE - MISSOURI PORTION TARIFF

Southwestern Bell Telephone
Company d/b/a AT&T Missouri

Section 5
8th Revised Sheet 1.1
Replacing 7th Revised Sheet 1.1

7th Revised Sheet 1.1 was previously 7th Revised Sheet 1.01 (AT)

MISSOURI PORTION - LEAVENWORTH-LANSING, KANSAS EXCHANGE (AT)

2. RATES (cont'd)

Footnotes:

Urban service applicable within the Base Rate Area; where urban service is furnished outside, urban mileage charges are applicable as set forth below:

	<u>Current Rates(1)(2)</u>	(AT)
One-party line stations and Private Branch Exchange Trunks	\$1.09	
Party line Stations, each	.80	

Urban mileage charges, as shown above, apply to customers having urban service who are located within the suburban service area. In those cases where the Base Rate Area boundary follows the center line of a street or highway, all dwellings or structures facing or adjoining this street or highway and within 150 feet of the center line of the street or highway shall be considered within the Base Rate Area and shall be given urban service without the application of urban mileage.

Area between the Base Rate Area boundary and suburban service area boundary.

- (1) For the period of November 26, 2008 through November 25, 2012, prices for residence basic local service in this exchange will be governed by Section 392.245.5(7) RSMo. (AT)
- (2) For the period of November 26, 2008 through November 25, 2012, prices for business basic local service in this exchange will be governed by Section 392.245.5(7) RSMo. (AT)

Issued: July 2, 2009

Effective: July 12, 2009

CANCELLED
May 1, 2014
Missouri Public
Service Commission
.II-2014-0379

By DAVID NICHOLS, President - Missouri
St. Louis, Missouri

Filed
Missouri Public
Service Commission
JI-2010-0004

No Supplement to this
tariff will be issued
except for the purpose
of canceling this tariff.

(RT)

LOCAL EXCHANGE TARIFF

II. RATES (cont'd)

Footnotes:

Urban service applicable within the Base Rate Area; where urban service is furnished outside, urban mileage charges are applicable as set forth below:

		Current Rates(1)
(C)	One-party line stations and Private Branch Exchange Trunks	\$1.09(CR)
	Party line Stations, each	.80(CR)

Urban mileage charges, as shown above, apply to customers having urban service who are located within the suburban service area. In those cases where the Base Rate Area boundary follows the center line of a street or highway, all dwellings or structures facing or adjoining this street or highway and within 150 feet of the center line of the street or highway shall be considered within the Base Rate Area and shall be given urban service without the application of urban mileage.

Area between the Base Rate Area boundary and suburban service area boundary.

(1) See Sheet 2 for maximum allowable rates.

Issued: October 17, 2005

Effective: December 1, 2005

By CINDY BRINKLEY, President-SBC Missouri
Southwestern Bell Telephone, L.P., d/b/a SBC Missouri
St. Louis, Missouri

No Supplement to this tariff will be issued except for the purpose of canceling this tariff.

Missouri Portion-
Leavenworth-Lansing, Kansas, Exchange
6th Revised Sheet 1.01
Replacing 5th Revised Sheet 1.01

SOUTHWESTERN BELL TELEPHONE COMPANY
LOCAL EXCHANGE TARIFF

II. RATES (cont'd)

Footnotes:

Urban service applicable within the Base Rate Area; where urban service is furnished outside, urban mileage charges are applicable as set forth below:

	Current Rates(1)
One-party line stations & Private Branch Exchange Trunks	\$1.11(CR)
Party line Stations, each	.82(CR)

Urban mileage charges, as shown above, apply to customers having urban service who are located within the suburban service area. In those cases where the Base Rate Area boundary follows the center line of a street or highway, all dwellings or structures facing or adjoining this street or highway and within 150 feet of the center line of the street or highway shall be considered within the Base Rate Area and shall be given urban service without the application of urban mileage.

Area between the Base Rate Area boundary and suburban service area boundary.

CANCELLED

DEC 01 2005

By *7th RS 1.01*
Public Service Commission
MISSOURI

(1) See Sheet 2 for maximum allowable rates.

Issued: October 15, 2004

Effective: December 1, 2004

By CINDY BRINKLEY, President-Missouri
Southwestern Bell Telephone, L.P., d/b/a Southwestern Bell Telephone Company
St. Louis, Missouri

**FILED
MO PSC**

No Supplement to this tariff will be issued except for the purpose of canceling this tariff.

Missouri Portion-
Leavenworth-Lansing, Kansas, Exchange
5th Revised Sheet 1.01
Replacing 4th Revised Sheet 1.01

SOUTHWESTERN BELL TELEPHONE COMPANY
LOCAL EXCHANGE TARIFF

Missouri Public
Service Commission

II. RATES (cont'd)

REC'D OCT 15 2002

Footnotes:

Urban service applicable within the Base Rate Area; where urban service is furnished outside, urban mileage charges are applicable as set forth below:

	Current Rates(1)
One-party line stations & Private Branch Exchange Trunks	\$1.14(CR)
Party line Stations, each	.84(CR)

Urban mileage charges, as shown above, apply to customers having urban service who are located within the suburban service area. In those cases where the Base Rate Area boundary follows the center line of a street or highway, all dwellings or structures facing or adjoining this street or highway and within 150 feet of the center line of the street or highway shall be considered within the Base Rate Area and shall be given urban service without the application of urban mileage.

Area between the Base Rate Area boundary and suburban service area boundary.

CANCELLED
DEC 01 2004
By *LAHRSI.01*
Public Service Commission
MISSOURI

Missouri Public
Service Commission

FILED DEC 01 2002

(1) See Sheet 2 for maximum allowable rates.

Issued: October 15, 2002

Effective: December 1, 2002

By CINDY BRINKLEY, President-Missouri
Southwestern Bell Telephone, L.P., d/b/a Southwestern Bell Telephone Company
St. Louis, Missouri

No supplement to this tariff will be issued except for the purpose of canceling this tariff.

MISSOURI PORTION-
LEAVENWORTH-LANSING, KANSAS, EXCHANGE
4th Revised Sheet 1.01
Replacing 3rd Revised Sheet 1.01

SOUTHWESTERN BELL TELEPHONE COMPANY
LOCAL EXCHANGE TARIFF

Missouri Public

REC'D OCT 01 2001

II. RATES-(Continued)

Service Commission

Footnotes:

- (1) Urban service applicable within the Base Rate Area; where urban service is furnished outside, urban mileage charges are applicable as set forth below:

CURRENT RATES (1)

One-party line stations & Private Branch Exchange Trunks	\$1.13(CR)
Party lines Stations, each	.83(CR)

Urban mileage charges, as shown above, apply to customers having urban service who are located within the suburban service area. In those cases where the Base Rate Area boundary follows the center line of a street or highway, all dwellings or structures facing or adjoining this street or highway and within 150 feet of the center line of the street or highway shall be considered within the Base Rate Area and shall be given urban service without the application of urban mileage.

- (2) Area between the Base Rate Area boundary and suburban service area boundary.

CANCELLED

DEC 01 2002

5th RS 1.01
Missouri Public Service Commission
MISSOURI

- (1) See Sheet 2 for maximum allowable rates.

Issued: October 1, 2001

Effective: December 1, 2001

By JAN NEWTON, President-Missouri
Southwestern Bell Telephone Company
St. Louis, Missouri

Missouri Public

FILED DEC 01 2001

Service Commission

No supplement to this tariff will be issued except for the purpose of canceling this tariff.

MISSOURI PORTION-
LEAVENWORTH-LANSING, KANSAS, EXCHANGE
3rd Revised Sheet 1.01
Replacing 2nd Revised Sheet 1.01

SOUTHWESTERN BELL TELEPHONE COMPANY
LOCAL EXCHANGE TARIFF

Missouri Public
Service Commission

REC'D OCT 02 2000

II. RATES-(Continued)

Footnotes:

- (1) Urban service applicable within the Base Rate Area; where urban service is furnished outside, urban mileage charges are applicable as set forth below:

(AT)

CURRENT RATES (1)

One-party line stations & Private Branch Exchange Trunks	\$1.14(CR)
Party lines Stations, each	.84(CR)

Urban mileage charges, as shown above, apply to customers having urban service who are located within the suburban service area. In those cases where the Base Rate Area boundary follows the center line of a street or highway, all dwellings or structures facing or adjoining this street or highway and within 150 feet of the center line of the street or highway shall be considered within the Base Rate Area and shall be given urban service without the application of urban mileage.

- (2) Area between the Base Rate Area boundary and suburban service area boundary.

CANCELLED

DEC 01 2001
By 442RS/01
Public Service Commission
MISSOURI

Missouri Public
Service Commission

FILED DEC 01 2000

- (AT) (1) See Sheet 2 for maximum allowable rates.

Issued: October 2, 2000

Effective: December 1, 2000

By JAN NEWTON, President-Missouri
Southwestern Bell Telephone Company
St. Louis, Missouri

No supplement to this tariff will be issued except for the purpose of canceling this tariff.

MISSOURI PORTION-
LEAVENWORTH-LANSING, KANSAS, EXCHANGE
2nd Revised Sheet 1.01
Replacing 1st Revised Sheet 1.01

SOUTHWESTERN BELL TELEPHONE COMPANY
LOCAL EXCHANGE TARIFF

RECEIVED

MAR 20 1989

II. RATES-(Continued)

Footnotes:

MISSOURI
Public Service Commission

- (1) Urban service applicable within the Base Rate Area; where urban service is furnished outside, urban mileage charges are applicable as set forth below:

Within Suburban Service Area(2):	<u>Monthly Rate</u>
One-party line stations and Private Branch Exchange trunks. .	\$1.15
Party line stations, each85

Urban mileage charges, as shown above, apply to customers having urban service who are located within the suburban service area. In those cases where the Base Rate Area boundary follows the center line of a street or highway, all dwellings or structures facing or adjoining this street or highway and within 150 feet of the center line of the street or highway shall be considered within the Base Rate Area and shall be given urban service without the application of urban mileage.

- (2) Area between the Base Rate Area boundary and suburban service area boundary.

(RT)

(T)

CANCELLED

DEC 01 2000
By ^{3rd} RS 1.01
Public Service Commission
MISSOURI

Issued: MAR 27 1989

Effective: MAY 27 1989

FILED

By R. D. BARRON, President-Missouri Division.
Southwestern Bell Telephone Company
St. Louis, Missouri

MAY 27 1989

Public Service Commission

P.S.C. Mo. - No. 17
LOCAL EXCHANGE - MISSOURI PORTION TARIFF

Southwestern Bell Telephone
Company d/b/a AT&T Missouri

Section 5
10th Revised Sheet 2
Replacing 9th Revised Sheet 2

(RT)

(RT)

Issued: July 2, 2009

By DAVID NICHOLS, President - Missouri
St. Louis, Missouri

Effective: July 12, 2009

CANCELLED
May 1, 2014
Missouri Public
Service Commission
JI-2014-0379

Filed
Missouri Public
Service Commission
JI-2010-0004

P.S.C. Mo. - No. 17

Missouri Portion-

Southwestern Bell Telephone
Company d/b/a AT&T Missouri

Leavenworth-Lansing, Kansas Exchange
9th Revised Sheet 2
Replacing 8th Revised Sheet 2

LOCAL EXCHANGE TARIFF

II. RATES (cont'd)

	Maximum Rates	
	Business	Residence
1. Flat Rate Service		
One-Party	\$20.33(CR)	\$10.35(CR)
Two-Party	N/A	7.16(CR)
Lifeline	N/A	(1)
2. Urban Mileage		
	Maximum Rates	
One-party line stations and Private Branch Exchange Trunks		\$1.11(CR)
Party line Stations, each		.82(CR)

(1) A customer eligible under established criteria can receive a discount from his or her bill for residential essential local telecommunications services, in accordance with P.S.C. Mo. – No. 24, Local Exchange Tariff, Section 1.2.2.E, regarding Lifeline Service.

Issued: December 31, 2007

Effective: February 16, 2008

By CINDY BRINKLEY, President – Missouri
St. Louis, Missouri

Cancelled
July 12, 2009
Missouri Public
Service Commission
JI-2010-0004

FILED
Missouri Public
Service Commission

P.S.C. Mo. - No. 17
Missouri Portion-

Southwestern Bell Telephone, L.P.
d/b/a AT&T Missouri

Leavenworth-Lansing, Kansas Exchange
8th Revised Sheet 2
Replacing 7th Revised Sheet 2

LOCAL EXCHANGE TARIFF

II. RATES (cont'd)

	Maximum Rates	
	<u>Business</u>	<u>Residence</u>
1. Flat Rate Service		
One-Party	\$19.93(CR)	\$10.14(CR)
Two-Party	N/A	7.02(CR)
Lifeline	N/A	(1)
2. Urban Mileage		
	Maximum Rates	
One-party line stations and Private Branch Exchange Trunks		\$1.09
Party line Stations, each		.80

- (1) A customer eligible under established criteria can receive a discount from his or her bill for residential essential local telecommunications services, in accordance with P.S.C. Mo. – No. 24, Local Exchange Tariff, Section 1.2.2.E, regarding Lifeline Service.

Issued: October 17, 2006

Effective: December 1, 2006

By CINDY BRINKLEY, President – Missouri
St. Louis, Missouri

CANCELLED
February 16, 2008
Missouri Public
Service Commission

Filed
Missouri Public
Service Commission

No Supplement to this tariff will be issued except for the purpose of canceling this tariff.

Missouri Portion-
Leavenworth-Lansing, Kansas Exchange
7th Revised Sheet 2
Replacing 6th Revised Sheet 2

LOCAL EXCHANGE TARIFF

II. RATES (cont'd)

		<u>Maximum Rates</u>	
		<u>Business</u>	<u>Residence</u>
1.	Flat Rate Service		
	One-Party	\$19.88(CR)	\$10.12(CR)
	Two-Party	N/A	7.00(CR)
	Lifeline	N/A	(1)
2.	Urban Mileage		Maximum Rates
	One-party line stations and Private Branch Exchange Trunks		\$1.09(CR)
	Party line Stations, each		.80(CR)

(1) A customer eligible under established criteria can receive a discount from his or her bill for residential essential local telecommunications services, in accordance with P.S.C. Mo. – No. 24, Local Exchange Tariff, Section 1.2.2.E, regarding Lifeline Service.

Issued: October 17, 2005

Effective: December 1, 2005

By CINDY BRINKLEY, President-SBC Missouri
Southwestern Bell Telephone, L.P., d/b/a SBC Missouri
St. Louis, Missouri

Cancelled

December 1, 2006

Missouri Public
Service Commission

Filed

Missouri Public
Service Commission

No Supplement to this tariff will be issued except for the purpose of canceling this tariff.

Missouri Portion-
Leavenworth-Lansing, Kansas Exchange
6th Revised Sheet 2
Replacing 5th Revised Sheet 2

(RT)

LOCAL EXCHANGE TARIFF

II. RATES (cont'd)

		<u>Maximum Rates</u>	
		<u>Business</u>	<u>Residence</u>
	1. Flat Rate Service		
	One-Party	\$20.27	\$10.33
	Two-Party	N/A	7.14
(CT)(CR)	Lifeline	N/A	(1)
	2. Urban Mileage	<u>Maximum Rates</u>	
(CT)	One-party line stations and Private Branch Exchange Trunks		\$1.11
	Party line Stations, each		.82

CANCELLED

DEC 01 2005

By *746 RS 2*
Public Service Commission
MISSOURI

- (AT) (1) A customer eligible under established criteria can receive a discount from his or her bill for residential essential local telecommunications services, in accordance with P.S.C. Mo. – No. 24, Local Exchange Tariff, Section 1.2.2.E, regarding Lifeline Service.
- (AT)

Issued: April 1, 2005

Effective: May 1, 2005

By CINDY BRINKLEY, President-SBC Missouri
Southwestern Bell Telephone, L.P., d/b/a SBC Missouri
St. Louis, Missouri

TO-1998-0329

FILED
MO PSC

No Supplement to this tariff will be issued except for the purpose of canceling this tariff.

Missouri Portion-
Leavenworth-Lansing, Kansas, Exchange
5th Revised Sheet 2
Replacing 4th Revised Sheet 2

SOUTHWESTERN BELL TELEPHONE COMPANY
LOCAL EXCHANGE TARIFF

II. RATES (cont'd)

	Maximum Rates	
	<u>Business</u>	<u>Residence</u>
1. Flat Rate Service		
One-Party	\$20.27(CR)	\$10.33(CR)
Two-Party	N/A	7.14
Lifeline(1)	N/A	6.83(CR)
2. Urban Mileage	Maximum Rates	
One-party line stations & Private Branch Exchange Trunks		\$1.11(CR)
Party line Stations, each		.82(CR)

CANCELLED

MAY 01 2005
letnRS 2
Public Service Commission
MISSOURI

(1) See P.S.C. Mo. – No. 24, Local Exchange Tariff, Section 1.2.2.E, for description, terms and conditions related to Lifeline Service.

Issued: October 15, 2004

Effective: December 1, 2004

By CINDY BRINKLEY, President-SBC Missouri
Southwestern Bell Telephone, L.P., d/b/a SBC Missouri
St. Louis, Missouri

**FILED
MO PSC**

No Supplement to this tariff will be issued except for the purpose of canceling this tariff.

Missouri Portion-
Leavenworth-Lansing, Kansas, Exchange
4th Revised Sheet 2
Replacing 3rd Revised Sheet 2
Missouri Public

SOUTHWESTERN BELL TELEPHONE COMPANY Service Commission
LOCAL EXCHANGE TARIFF

REC'D **MAY 10 2004**

II. RATES (cont'd)

		Maximum Rates	
		<u>Business</u>	<u>Residence</u>
(AT)	1. Flat Rate Service		
	One-Party	\$20.83	\$10.61
	Two-Party	N/A	7.34
	Lifeline(1)	N/A	7.11(NR)
		Maximum Rates	
(AT)	2. Urban Mileage		
	One-party line stations & Private Branch Exchange Trunks		\$1.14
	Party line Stations, each		.84

CANCELLED

DEC 01 2004
By *54hRS2*
Public Service Commission
MISSOURI

(AT) (1) See P.S.C. Mo. – No. 24, Local Exchange Tariff, Section 1.2.2.E, for description, terms and conditions related to Lifeline Service.

Issued: May 10, 2004

Effective: June 9, 2004

By CINDY BRINKLEY, President-SBC Missouri
Southwestern Bell Telephone, L.P., d/b/a SBC Missouri
St. Louis, Missouri

Missouri Public
Service Commission

FILED **JUN 09 2004**

No Supplement to this tariff will be issued except for the purpose of canceling this tariff.

Missouri Portion-
Leavenworth-Lansing, Kansas, Exchange
3rd Revised Sheet 2
Replacing 2nd Revised Sheet 2

SOUTHWESTERN BELL TELEPHONE COMPANY
LOCAL EXCHANGE TARIFF

REC'D OCT 15 2003

II. RATES (cont'd)

		<u>Service Commission</u>	
		<u>Maximum Rates</u>	
		<u>Business</u>	<u>Residence</u>
1. Flat Rate Service			
	One-Party	\$20.83(CR)	\$10.61(CR)
	Two-Party	NA	7.34
2. Urban Mileage		<u>Maximum Rates</u>	
	One-party line stations & Private Branch Exchange Trunks	\$1.14	
	Party line Stations, each	.84	

CANCELLED
JUN 09 2004
By *CHRS*
Public Service Commission
MISSOURI

Issued: October 15, 2003

Effective: December 1, 2003

By CINDY BRINKLEY, President-SBC Missouri
Southwestern Bell Telephone, L.P., d/b/a SBC Missouri
St. Louis, Missouri

Missouri Public
Service Commission

FILED DEC 01 2003

No Supplement to this tariff will be issued except for the purpose of canceling this tariff.

Missouri Portion-
Leavenworth-Lansing, Kansas, Exchange
2nd Revised Sheet 2
Replacing 1st Revised Sheet 2

SOUTHWESTERN BELL TELEPHONE COMPANY LOCAL EXCHANGE TARIFF

II. RATES (cont'd)

1. Flat Rate Service	Maximum Rates	
	Business	Residence
One-Party	\$20.84(CR)	\$10.62(CR)
Two-Party	NA	7.34(CR)

2. Urban Mileage	Maximum Rates
One-party line stations & Private Branch Exchange Trunks	\$1.14(CR)
Party line Stations, each	.84(CR)

**Missouri Public
Service Commission**

REC'D OCT 15 2002

CANCELLED

DEC 01 2003

**Missouri Public Service Commission
MISSOURI**

**Missouri Public
Service Commission**

FILED DEC 01 2002

Issued: October 15, 2002

Effective: December 1, 2002

By CINDY BRINKLEY, President-Missouri
Southwestern Bell Telephone, L.P., d/b/a Southwestern Bell Telephone Company
St. Louis, Missouri

No supplement to this tariff will be issued except for the purpose of canceling this tariff.

MISSOURI PORTION-
LEAVENWORTH-LANSING, KANSAS, EXCHANGE

1st Revised Sheet 2
Replacing Original Sheet of Missouri Public

SOUTHWESTERN BELL TELEPHONE COMPANY
LOCAL EXCHANGE TARIFF

REC'D OCT 01 2001

Service Commission

1. Flat Rate Service

MAXIMUM RATES

	<u>Business</u>	<u>Residence</u>
One-Party	\$20.65 (CR)	\$10.52 (CR)
Two-Party	N/A	7.28 (CR)

2. Urban Mileage

MAXIMUM RATES

One-party line stations & Private Branch Exchange Trunks	\$1.13 (CR)
Party lines Stations, each	.83 (CR)

CANCELLED

DEC 01 2002
2nd RS 2
Public Service Commission
MISSOURI

Issued: October 1, 2001

Effective: December 1, 2001

By JAN NEWTON, President-Missouri
Southwestern Bell Telephone Company
St. Louis, Missouri

Missouri Public

FILED DEC 01 2001

Service Commission

No supplement to this tariff will be issued except for the purpose of canceling this tariff.

MISSOURI PORTION-
LEAVENWORTH-LANSING, KANSAS, EXCHANGE
Original Sheet 2

SOUTHWESTERN BELL TELEPHONE COMPANY
LOCAL EXCHANGE TARIFF

Missouri Public
Service Commission

REC'D OCT 02 2000

1. Flat Rate Service	<u>MAXIMUM RATES</u>	
	<u>Business</u>	<u>Residence</u>
One-Party	\$20.81	\$10.60
Two-Party	N/A	7.33

2. Urban Mileage	<u>MAXIMUM RATES</u>	
One-party line stations & Private Branch Exchange Trunks	\$1.14	
Party lines Stations, each		.84

CANCELLED
DEC 01 2001
By: SRS 2
Public Service Commission
MISSOURI

Missouri Public
Service Commission

FILED DEC 01 2000

Issued: October 2, 2000

Effective: December 1, 2000

By JAN NEWTON, President-Missouri
Southwestern Bell Telephone Company
St. Louis, Missouri

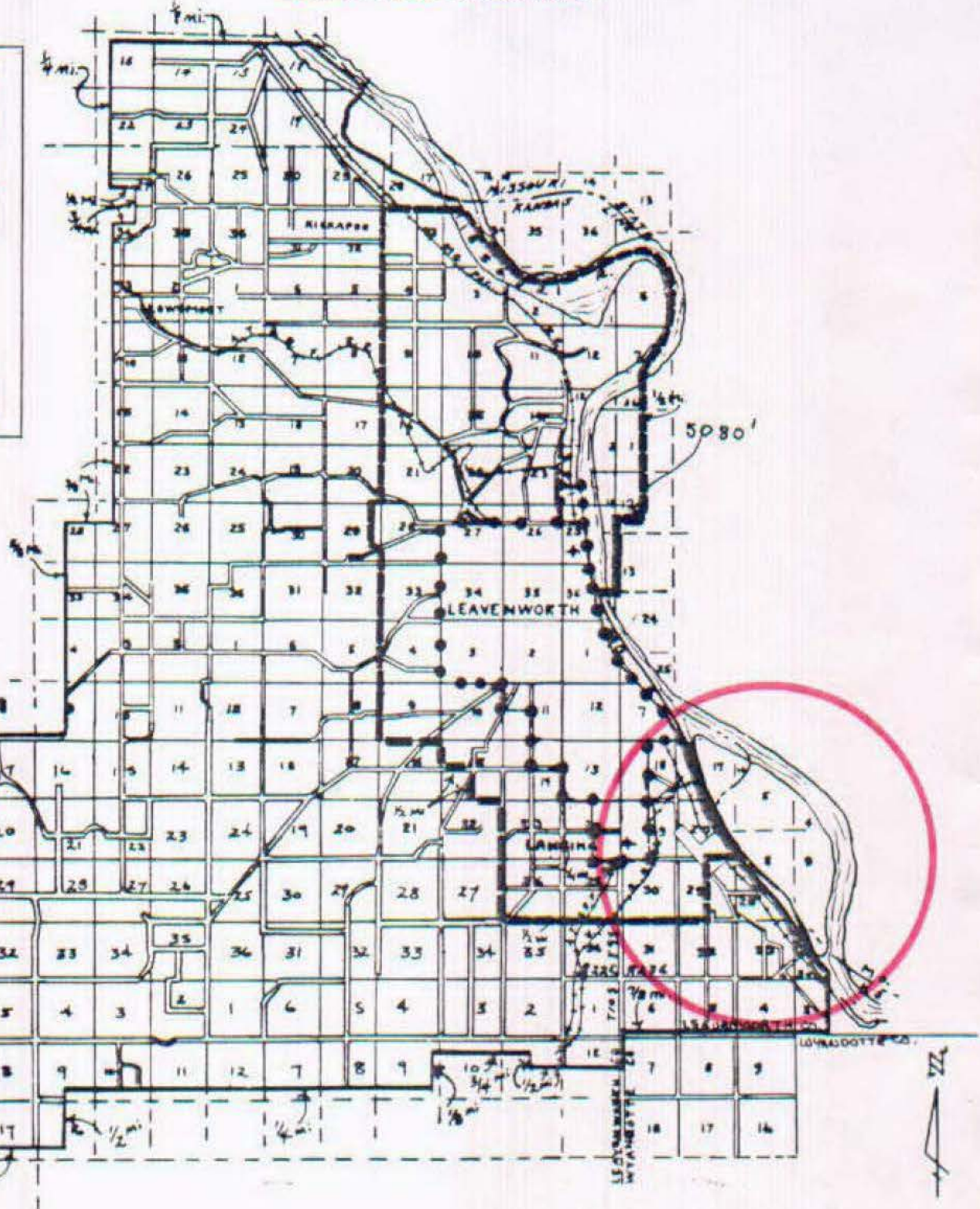
NO SUPPLEMENT TO THIS TARIFF WILL BE ISSUED EXCEPT FOR THE PURPOSE OF CANCELING THIS TARIFF.

Missouri Portion-Leavenworth-Lansing, Kansas Exchange

1st REVISED SHEET 2
REPLACING ORIGINAL SHEET 2

EXCHANGE AREA MAP

CODE
BELL CENTRAL OFFICE: 
BASE RATE AREA LIMITS: 
SUBURBAN SERVICE AREA LIMITS: 
EXCHANGE AREA LIMITS: 
SCALE: 1 INCH = 2.55 MILES



CANCELLED - Missouri Public Service Commission - 05/01/2024 - TN-2024-0278 - JI-2024-0142

Issued: June 6, 1973

Effective: July 6, 1973

By R. R. SHOCKLEY, Vice President, Missouri-Illinois
Southwestern Bell Telephone Company
St. Louis, Missouri

NO SUPPLEMENT TO THIS TARIFF WILL BE ISSUED EXCEPT FOR THE PURPOSE OF CANCELING THIS TARIFF.

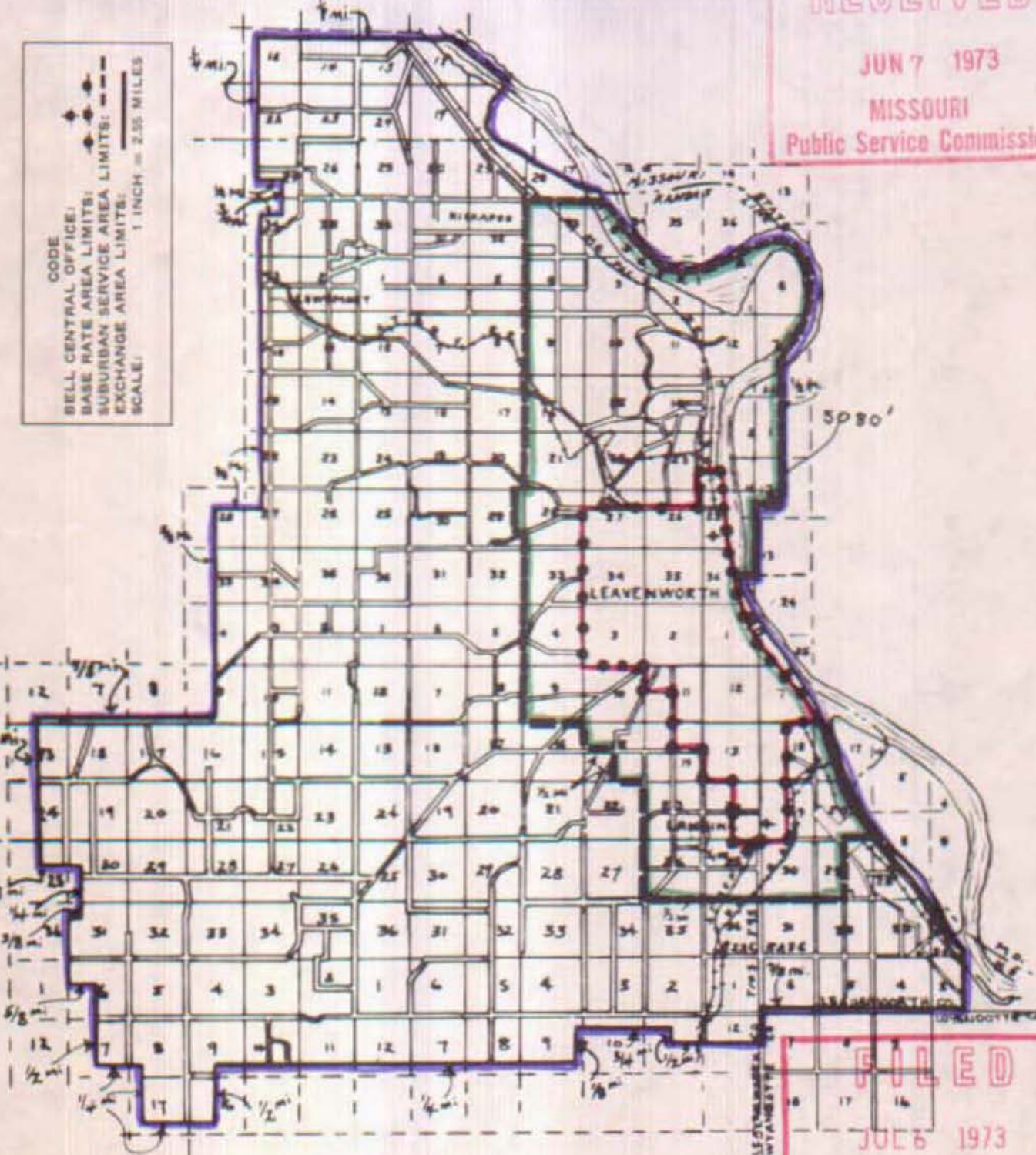
Missouri Portion-Leavenworth-Lansing, Kansas Exchange

1st REVISED SHEET 2
REPLACING ORIGINAL SHEET 2

EXCHANGE AREA MAP

RECEIVED
JUN 7 1973
MISSOURI
Public Service Commission

CODE
BELL CENTRAL OFFICE!
BASE RATE AREA LIMITS:
SUBURBAN SERVICE AREA LIMITS:
EXCHANGE AREA LIMITS:
SCALE: 1 INCH = 2.55 MILES



- Exchange Boundary
- Base Rate Area Boundary
- Suburban Service Area

FILED
JUL 6 1973
Public Service Commission

CANCELLED - Missouri Public Service Commission - 05/01/2024 - TN-2024-0278 - JI-2024-0142

Issued: June 6, 1973

Effective: July 6, 1973

By R. R. SHOCKLEY, Vice President, Missouri-Illinois
Southwestern Bell Telephone Company
St. Louis, Missouri

SBC PSC MO #17
Lilbourn, Missouri
1st Revised Sheet 2
Replacing Original Sheet 2

Non-Scannable Map

(Is viewable in the Data Center
200 Madison Street, 1st Floor
Jefferson City MO)

NO SUPPLEMENT TO THIS TARIFF WILL BE ISSUED EXCEPT FOR THE PURPOSE OF CANCELING THIS TARIFF.

P. S. C. Mo. No. 17
EXCHANGE AREA MAP

10th REVISED SHEET 3
REPLACING 9th REVISED SHEET 3

RECEIVED

MAR 8 1991

MISSOURI
Public Service Commission

T24N
T23N

T23N
T22N

T22N
T21N

R12E R13E

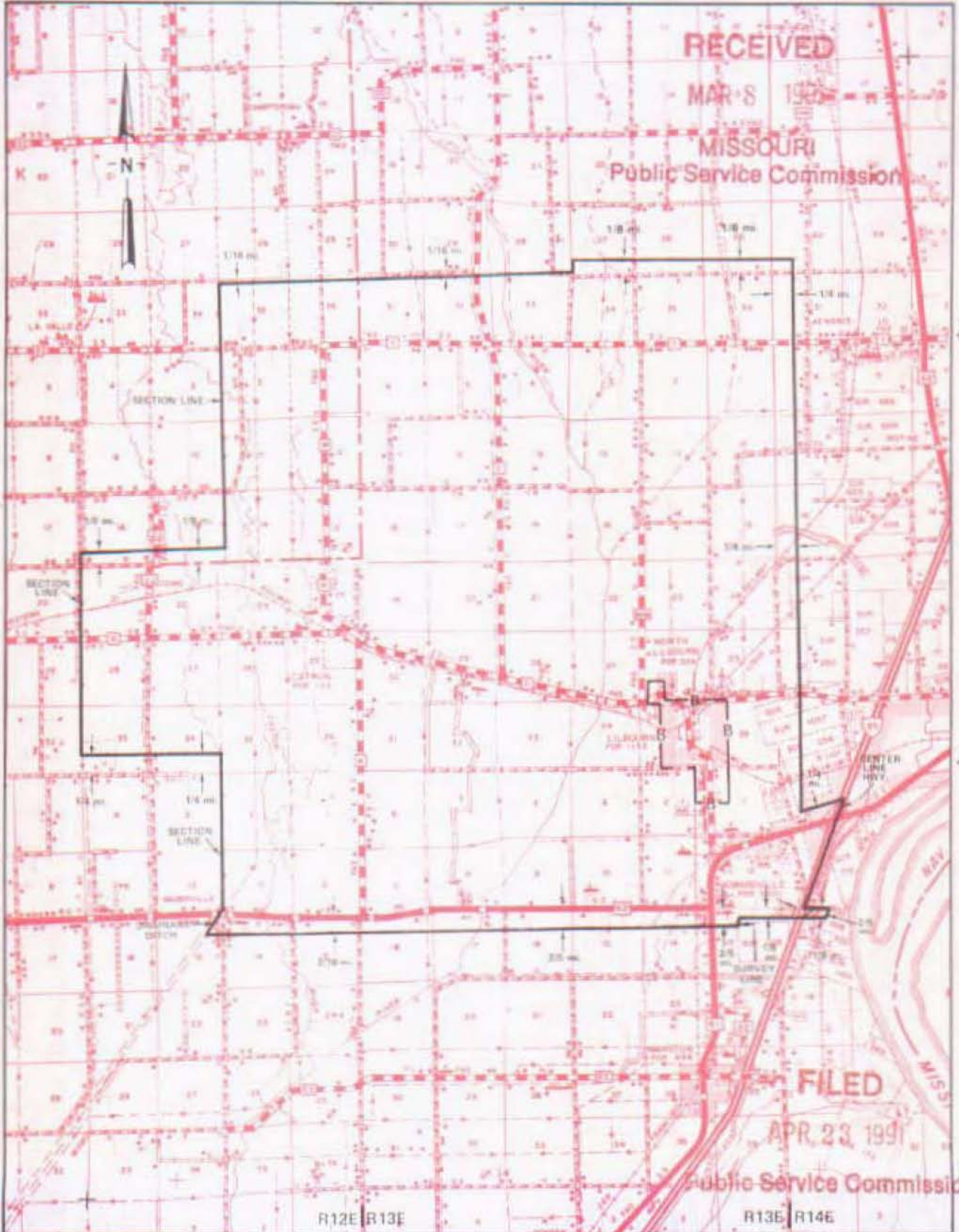
R13E R14E

By R. D. BARRON, PRESIDENT, MISSOURI DIVISION
Southwestern Bell Telephone Company
St. Louis, Missouri

Issued: March 8, 1991

Effective: April 23, 1991

CANCELLED - Missouri Public Service Commission - 05/01/2024 - TN-2024-0278 - JI-2024-0142



NO SUPPLEMENT TO THIS TARIFF WILL
BE ISSUED EXCEPT FOR THE PURPOSE OF
CANCELING THIS TARIFF.

P. S. C. No. 17
BASE RATE AREA MAP

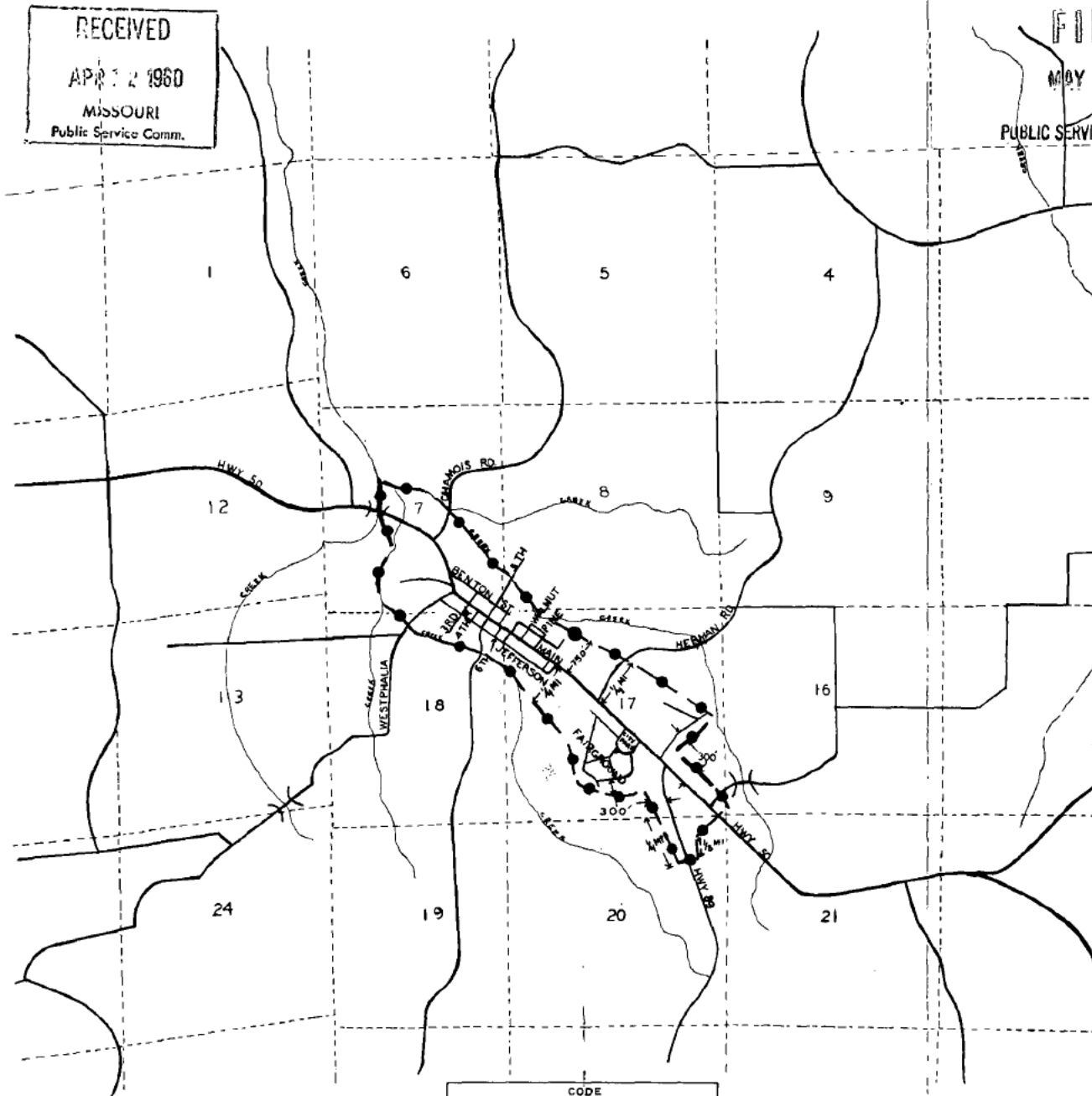
Linn, Missouri
1st REVISED SHEET 2
REPLACING ORIGINAL SHEET 2

RECEIVED
APR 12 1960
MISSOURI
Public Service Comm.

FILED
MAY 15 1960
PUBLIC SERVICE COMMISSION

CANCELLED - Missouri Public Service Commission - 05/01/2024 - TN-2024-0278 - JI-2024-0142

LINN, MO.



CODE
BELL CENTRAL OFFICE: [star symbol]
BASE RATE AREA LIMITS: [dashed line with dots symbol]



Issued: April 15, 1960

By F. B. HUNT, Vice President and General Manager
Southwestern Bell Telephone Company
St. Louis, Missouri

Effective: May 15, 1960

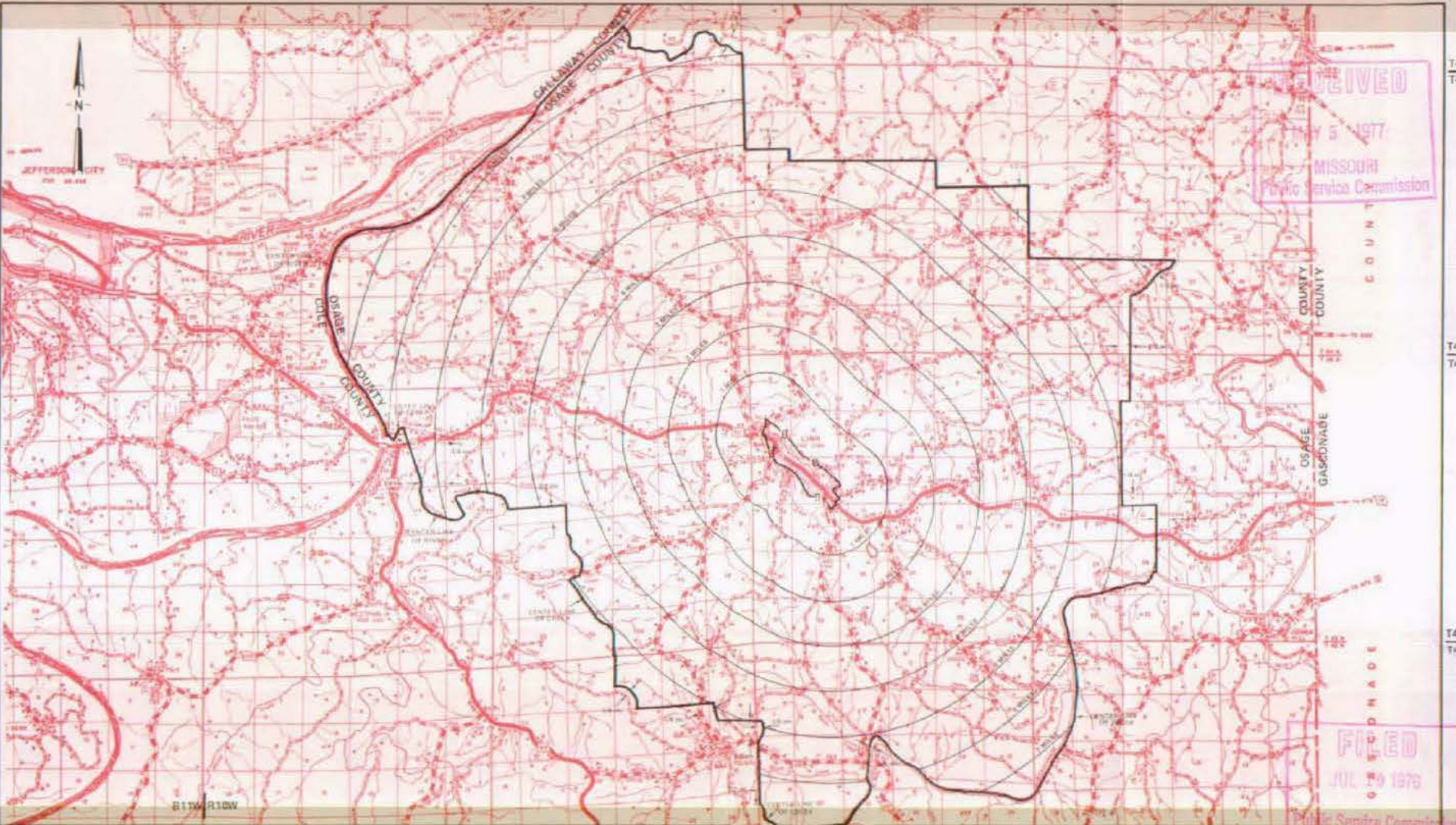
NO SUPPLEMENT TO THIS TARIFF WILL BE ISSUED EXCEPT FOR THE PURPOSE OF CANCELING THIS TARIFF.

P. S. C. Mo. No. 17
EXCHANGE AREA MAP

Linn, Missouri

5th REVISED SHEET 3
REPLACING 5th REVISED SHEET 3

CANCELLED - Missouri Public Service Commission - 05/01/2024 - TN-2024-0278 - JI-2024-0142



RECEIVED
MAY 5 1977
MISSOURI
Public Service Commission

FILED
JUL 10 1978
Public Service Commission

T45N
T44N
T43N
T43N
T42N

By R. R. SHOCKLEY, Vice President, Missouri
Southwestern Bell Telephone
St. Louis, Missouri

Issued: MAY 10 1977

Effective: JUL 10 1978

NO SUPPLEMENT TO THIS TARIFF WILL BE ISSUED EXCEPT FOR THE PURPOSE OF CANCELING THIS TARIFF.

✓ LINN CREEK, MISSOURI
OSAGE BEACH-LINN CREEK
First Revised Sheet 5
Replacing Original Sheet 5

P.S.C. Mo. 1
(Canceling all Previous Schedules)
EXCHANGE AND INITIAL RATE AREA MAP

CANCELLED - Missouri Public Service Commission - 05/01/2024 - TN-2024-0278 - JF-2024-0142

LINN CREEK, MO. - SCALE 1/2" = 1 MILE



DEC 18 1947
FILED
JAN 17 1948
Missouri Public Service Commission

CODE
CENTRAL OFFICE: ◆
INITIAL RATE AREA LIMITS: ◆◆◆
EXCHANGE AREA LIMITS: ———
SCALE: 1/2 INCH = 1 MILE

Issued: December 17, 1947

Effective: January 17, 1948

By T. L. LEONARD, President
Ozark Central Telephone Company
St. Louis, Missouri

NO SUPPLEMENT TO THIS TARIFF WILL
BE ISSUED EXCEPT FOR THE PURPOSE
OF CANCELING THIS TARIFF.

LINN CREEK, MISSOURI
Linn Creek Zone
2ND REVISED SHEET 1
CANCELING 1ST REVISED SHEET 1

RECEIVED
AUG 29 1950
MISSOURI
Public Service Comm.

For rates and practices relating to Linn Creek, please refer to the Camdenton,
Missouri Local Exchange Tariff.

FILED

OCT 1 1950

PUBLIC SERVICE COMMISSION

Issued: August 28, 1950

Effective: October 1, 1950

By T. L. LEONARD, President
Ozark Central Telephone Company
St. Louis, Missouri

CANCELLED - Missouri Public Service Commission - 05/01/2024 - TN-2024-0276 - JF-2024-0142

No supplement to this tariff will be issued except for the purpose of canceling this tariff.

P. S. C. Mo. - No. 17

LOCKWOOD, MISSOURI

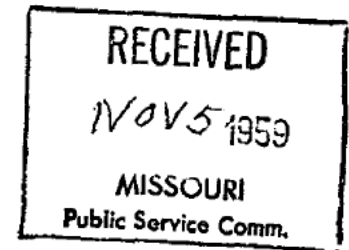
Original Sheet 1
Canceling Western Light and Telephone Company's
Local Exchange Tariffs P.S. C. MO. No. 3
4th Revised Sheet 1
4th Revised Sheet 2
1st Revised Sheet 3.01

For local rates applicable to Lockwood please refer to the local exchange tariff Sheet 1 and Sheet 1-C.

FILED

DEC 17 1959

PUBLIC SERVICE COMMISSION



Issued: November 17, 1959

Effective: December 17, 1959

By E. G. GREBER, Vice President and General Manager
Southwestern Bell Telephone Company
St. Louis, Missouri

CANCELLED - Missouri Public Service Commission - 05/01/2024 - TN-2024-0278 - JI-2024-0142

SBC PSC MO #17
Lockwood, Missouri

Original Sheet 2

Replacing Western Light and Telephone Company

P.S.C. Mo. No. 3

Original Sheet 5

Non-Scannable
Map

(Is viewable in the Data Center
200 Madison Street, 1st Floor
Jefferson City MO)

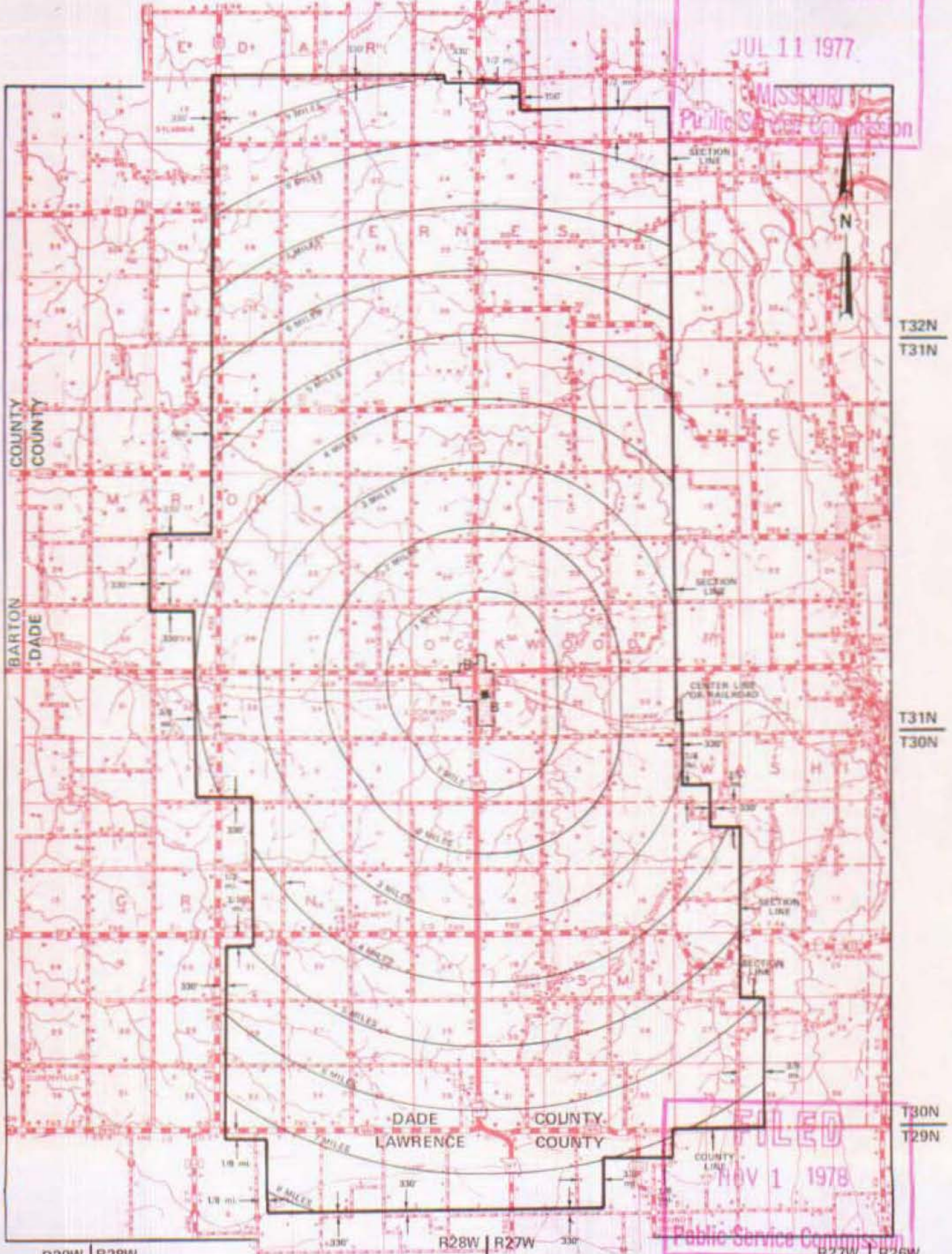
NO SUPPLEMENT TO THIS TARIFF WILL BE ISSUED EXCEPT FOR THE PURPOSE OF CANCELING THIS TARIFF.

P. S. C. Mo. No. 17 EXCHANGE AREA MAP

Lockwood, Missouri
4th REVISED SHEET 3
REPLACING 3rd REVISED SHEET 3

JUL 11 1977

MISSOURI
Public Service Commission



FILED
NOV 1 1978
Public Service Commission

By R. R. SHOCKLEY, Vice President, Missouri
Southwestern Bell Telephone Company

NOV 1 - 1978

CANCELLED - Missouri Public Service Commission - 05/01/2024 - TN-2024-0278 - JI-2024-0142

NO SUPPLEMENT TO THIS TARIFF WILL
BE ISSUED EXCEPT FOR THE PURPOSE OF
CANCELING THIS TARIFF.

P. S. C.-Mo. No. 17
BASE RATE AREA MAP

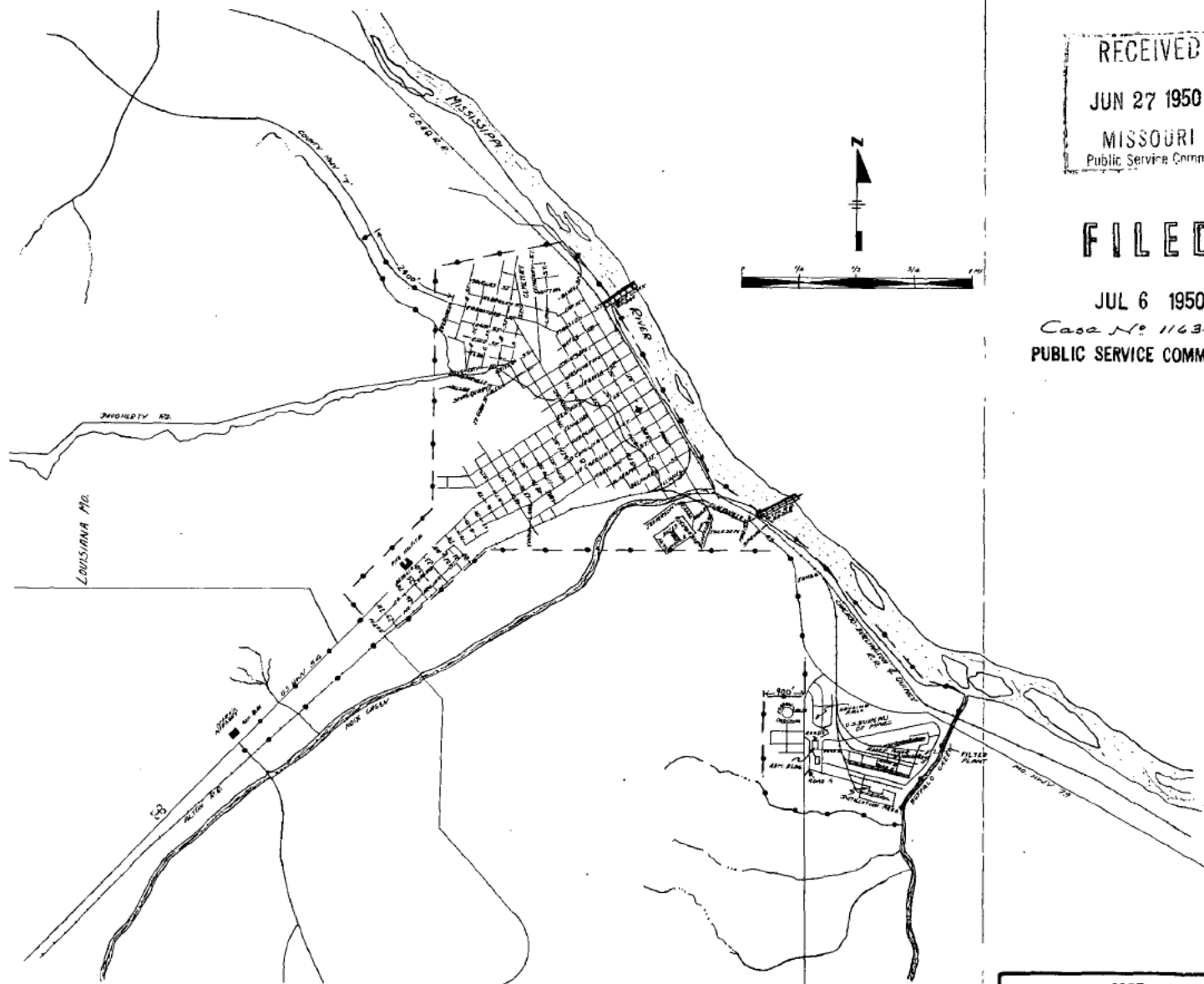
Louisiana, Missouri
ORIGINAL SHEET 2
REPLACING ORIGINAL SHEET 1-A

RECEIVED
JUN 27 1950
MISSOURI
Public Service Comm.

FILED

JUL 6 1950
Case No 11634
PUBLIC SERVICE COMMISSION

CANCELLED - Missouri Public Service Commission - 05/01/2024 - TN-2024-0278 - JI-2024-0142



CODE
BELL CENTRAL OFFICE: ◆
BASE RATE AREA LIMITS: ◆◆◆

Issued: June 27, 1950

By H. R. TOWLES, General Manager
Southwestern Bell Telephone Company
St. Louis, Missouri

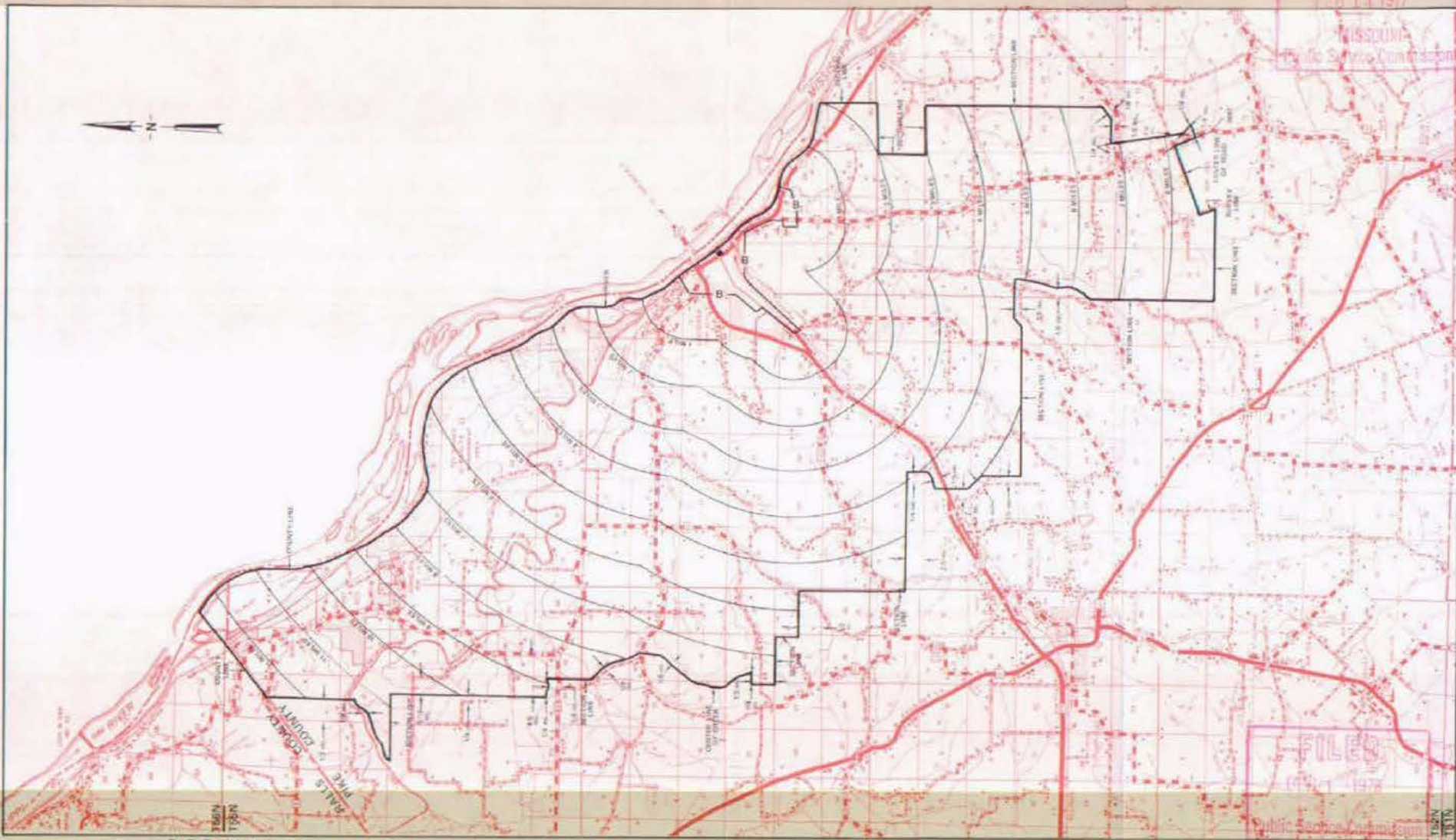
Effective: July 6, 1950

NO SUPPLEMENT TO THIS TARIFF WILL BE ISSUED EXCEPT FOR THE PURPOSE OF CANCELING THIS TARIFF.

P. S. C. Mo. No. 17
EXCHANGE AREA MAP

Louisiana, Missouri
17th REVISED SHEET
REPLACING 10th REVISED SHEET

FEB 14 1977



By R. R. SHOCKLEY, Vice President, Missouri
Southwestern Bell Telephone Company
St. Louis, Missouri

Issued: February 15, 1977

Effective: DEC 1 1978

CANCELLED - Missouri Public Service Commission - 05/01/2024 - TN-2024-0278 - JI-2024-0142