

NO SUPPLEMENT TO THIS TARIFF WILL BE ISSUED EXCEPT FOR THE PURPOSE OF CANCELING THIS TARIFF.

P. S. C. Mo. No. 17 BASE RATE AREA MAP

Union, Missouri

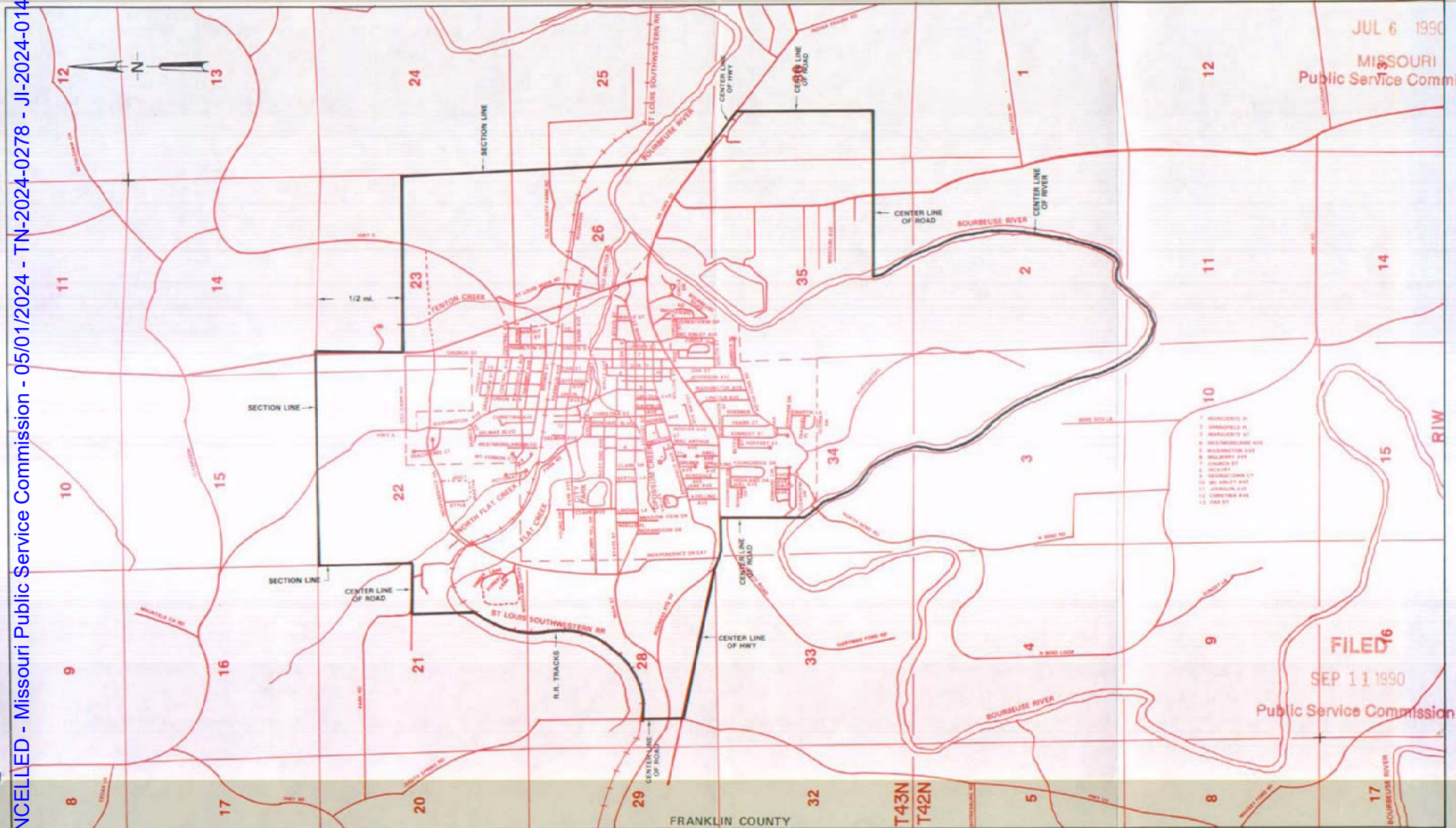
4th REVISED SHEET 2
REPLACING 3rd REVISED SHEET 2

RECEIVED

JUL 6 1990

MISSOURI
Public Service Commission

CANCELLED - Missouri Public Service Commission - 05/01/2024 - TN-2024-0278 - JI-2024-0142



- 1. MARSHFIELD ST.
- 2. MARSHFIELD ST.
- 3. MARSHFIELD ST.
- 4. MARSHFIELD ST.
- 5. MARSHFIELD ST.
- 6. MARSHFIELD ST.
- 7. MARSHFIELD ST.
- 8. MARSHFIELD ST.
- 9. MARSHFIELD ST.
- 10. MARSHFIELD ST.
- 11. MARSHFIELD ST.
- 12. MARSHFIELD ST.
- 13. MARSHFIELD ST.
- 14. MARSHFIELD ST.
- 15. MARSHFIELD ST.
- 16. MARSHFIELD ST.
- 17. MARSHFIELD ST.

FILED

SEP 11 1990

Public Service Commission

FRANKLIN COUNTY

T43N
T42N

By R. D. BARRON, PRESIDENT, MISSOURI DIVISION
Southwestern Bell Telephone Company
St. Louis, Missouri

JUL 16 1990

Issued: _____

Effective: SEP 11 1990

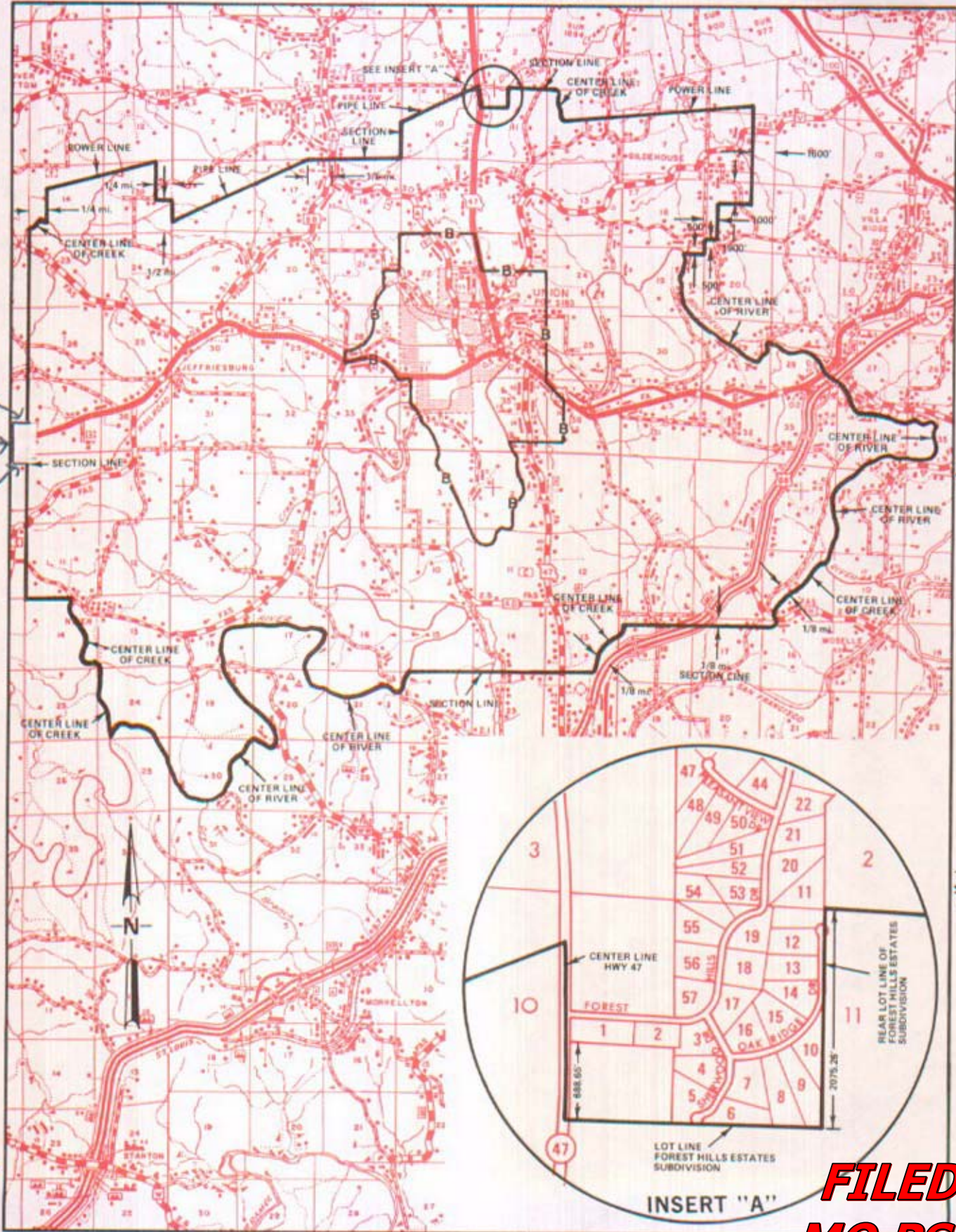
NO SUPPLEMENT TO THIS TARIFF WILL BE ISSUED EXCEPT FOR THE PURPOSE OF CANCELING THIS TARIFF.

P. S. C. Mo. No. 17

Union, Missouri

REPLACING 8th Revised Sheet 3
7th Revised Sheet 3

EXCHANGE AREA MAP



CANCELLED - Missouri Public Service Commission - 05/01/2024 - TN-2024-0278 - JI-2024-0142

**FILED
MO PSC**

NO SUPPLEMENT TO THIS TARIFF WILL BE ISSUED EXCEPT FOR THE PURPOSE OF CANCELING THIS TARIFF.

P. S. C. Mo. No. 17

Union, Missouri

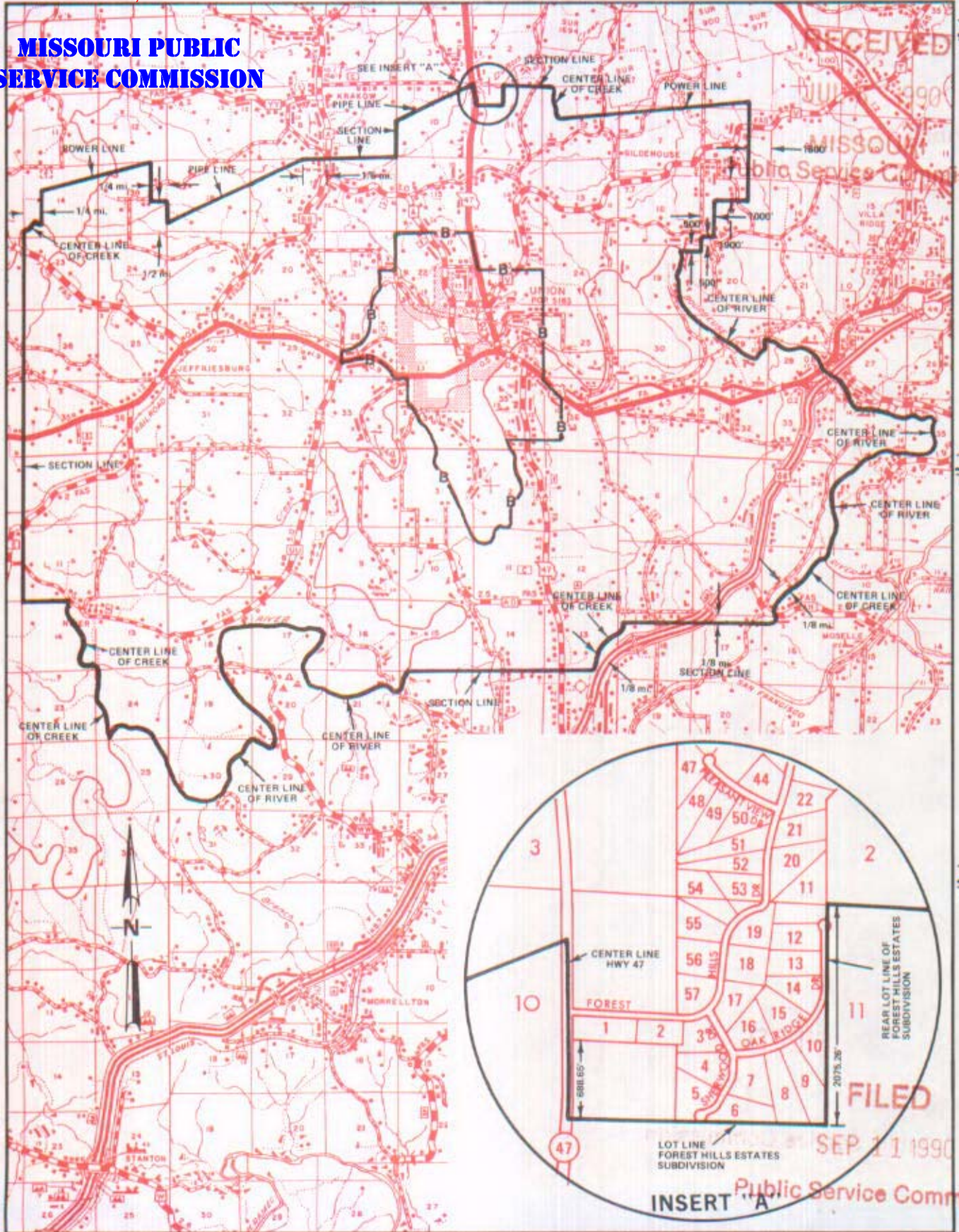
7th REVISED SHEET 3
REPLACING 6th REVISED SHEET 3

CANCELLED

March 1, 2006

EXCHANGE AREA MAP

MISSOURI PUBLIC SERVICE COMMISSION



T44N
T43N

T43N
T42N

T42N
T41N

R2W | R1W

R1W | R2W

Issued: **JUL 16 1990**

By R. D. BARRON, President, Missouri Division
Southwestern Bell Telephone Company
St. Louis, Missouri

Effective: **SEP 11 1990**

UNIONTOWN - SEE OLD APPLETON