

SBC PSC MO #17
Valley Park, Missouri
14th Revised Sheet 2
Replacing 13th Revised Sheet 2

Non-Scannable Map

(Is viewable in the Data Center
200 Madison Street, 1st Floor
Jefferson City MO)

SBC PSC MO #17
Versailles, Missouri
Original Sheet 2
Replacing Ozark Tel. Co.
P.S.C. Mo. No. 1
Original Sheet 2

Non-Scannable Map

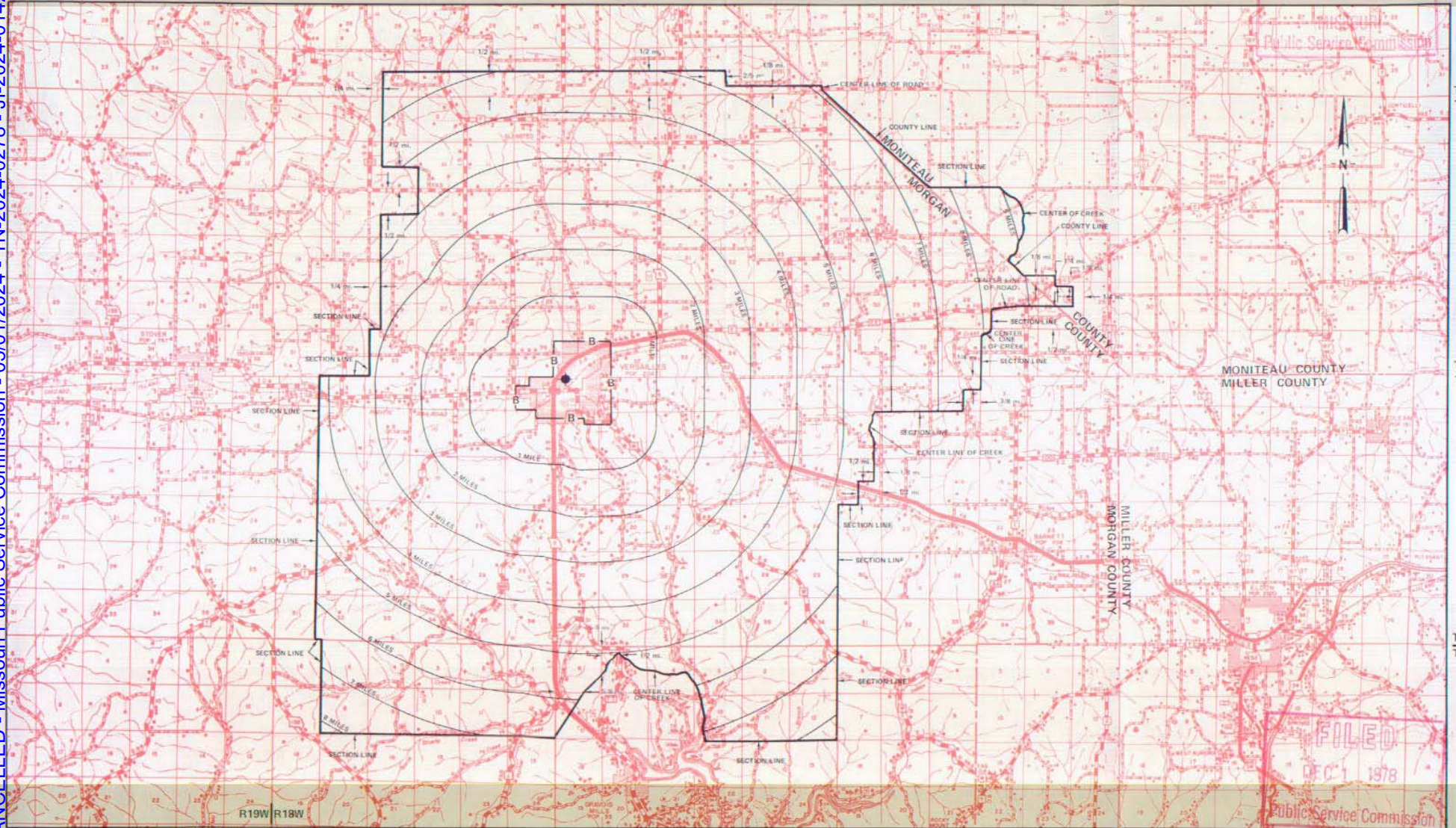
(Is viewable in the Data Center
200 Madison Street, 1st Floor
Jefferson City MO)

NO SUPPLEMENT TO THIS TARIFF WILL BE ISSUED EXCEPT FOR THE PURPOSE OF CANCELING THIS TARIFF.

P. S. C. Mo. No. 17 EXCHANGE AREA MAP

RECEIVED
Versailles, Missouri
15th REVISED SHEET 3
REPLACING 14th REVISED SHEET 3
FEB 14 1977

CANCELLED - Missouri Public Service Commission - 05/01/2024 - TN-2024-0278 - JI-2024-0142



FILED
DEC 1 1978
Public Service Commission

By R. R. SHOCKLEY, Vice President, Missouri
Southwestern Bell Telephone Company
St. Louis, Missouri

Issued: February 15, 1977

Effective: DEC 1 1978

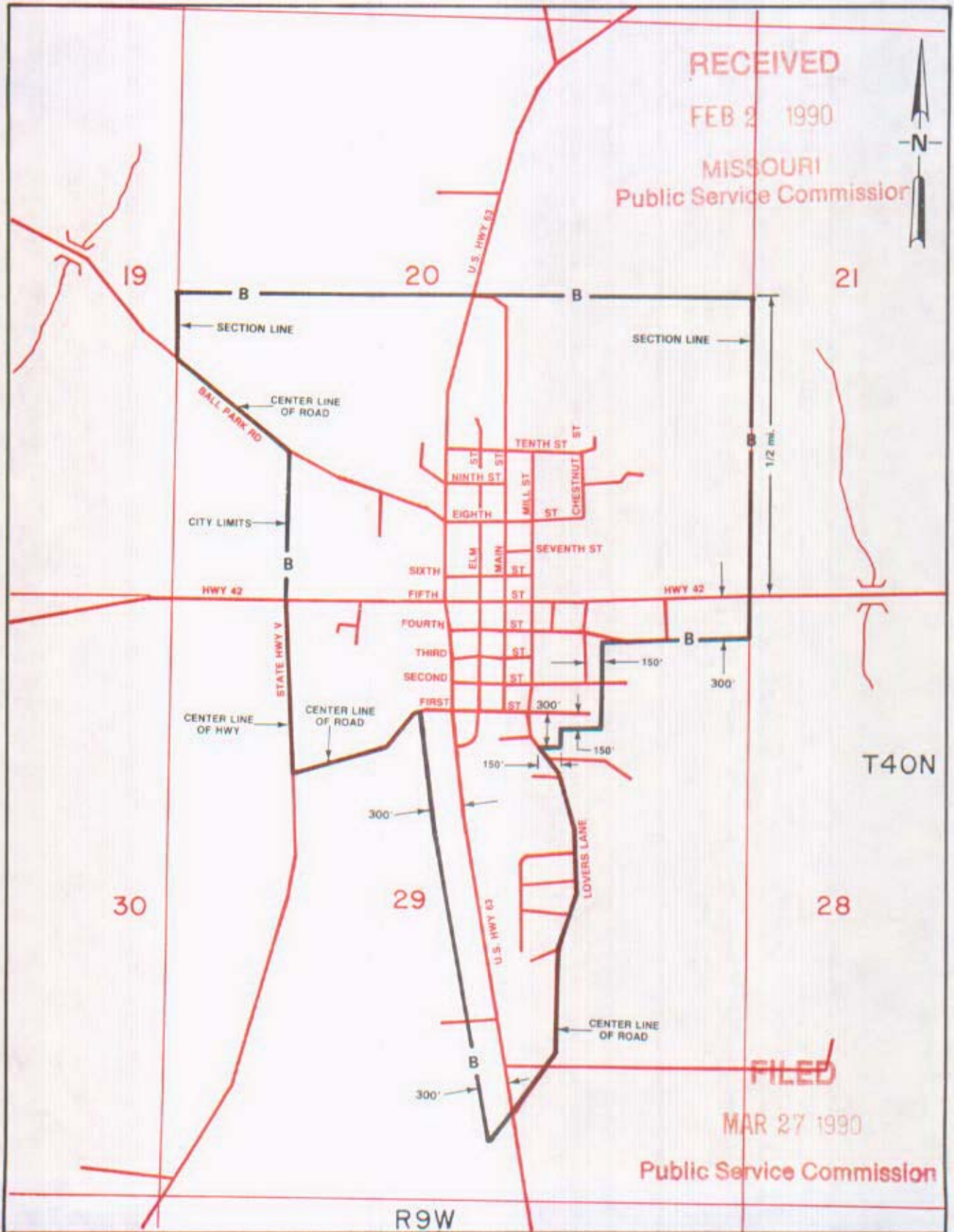
NO SUPPLEMENT TO THIS TARIFF WILL BE ISSUED EXCEPT FOR THE PURPOSE OF CANCELING THIS TARIFF.

Vienna, Missouri

P. S. C. Mo. No. 17 BASE RATE AREA MAP

1st REVISED SHEET 2
REPLACING ORIGINAL SHEET 2

CANCELLED - Missouri Public Service Commission - 05/01/2024 - TN-2024-0278 - JI-2024-0142



FEB 2 1990

By R. D. BARRON, U.S. PRESIDENT, MISSOURI DIVISION
Southwestern Bell Telephone Company
St. Louis, Missouri

MAR 27 1990

Issued: _____

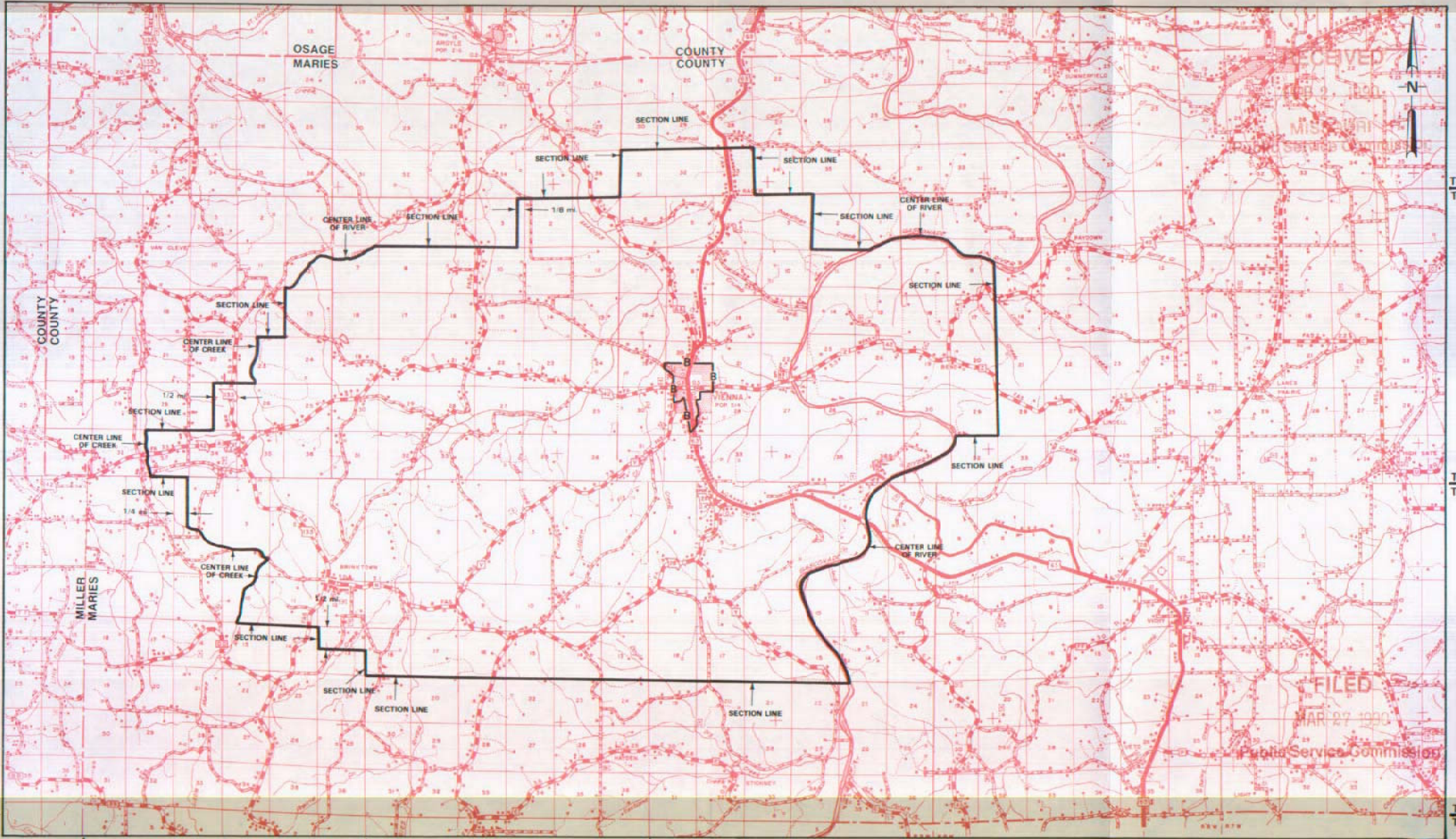
Effective: _____

NO SUPPLEMENT TO THIS TARIFF WILL BE ISSUED EXCEPT FOR THE PURPOSE OF CANCELING THIS TARIFF.

P. S. C. Mo. No. 17 EXCHANGE AREA MAP

Vienna, Missouri

7th REVISED SHEET 3
REPLACING 6th REVISED SHEET 3



CANCELLED - Missouri Public Service Commission - 05/01/2024 - TN-2024-0278 - JI-2024-0142

Issued: **FEB 2 1990**

By R. D. BARRON, PRESIDENT, MISSOURI DIVISION
Southwestern Bell Telephone Company
St. Louis, Missouri

Effective: **MAR 27 1990**

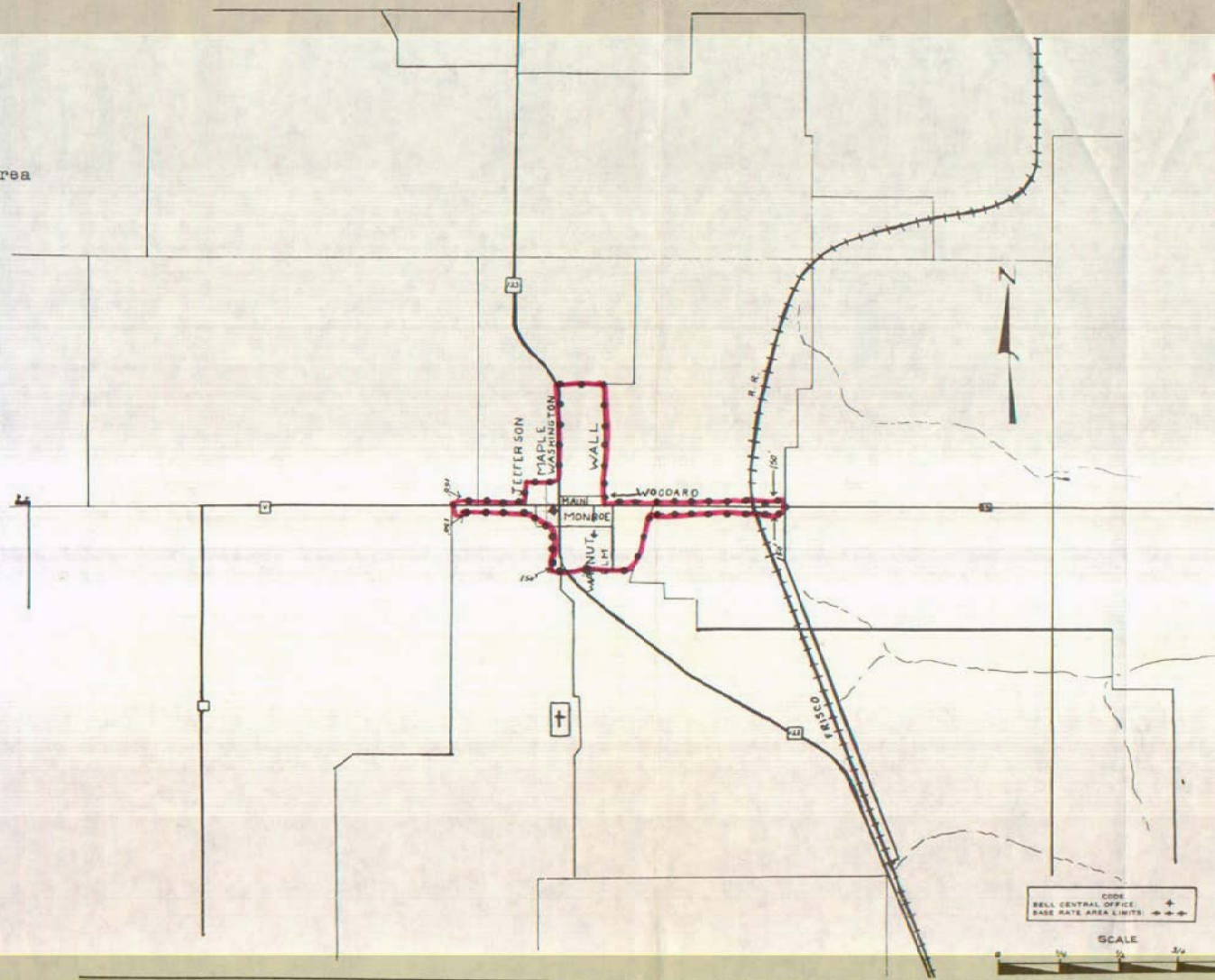
CANCELLED - Missouri Public Service Commission - 05/01/2024 - TN-2024-0278 - JI-2024-0142

NO SUPPLEMENT TO THIS TARIFF WILL BE ISSUED EXCEPT FOR THE PURPOSE OF CANCELING THIS TARIFF.

P. S. C. Mo. No. 17
BASE RATE AREA MAP

Walnut Grove, Missouri
1st REVISED SHEET 2
REPLACING ORIGINAL SHEET 2

Base Rate Area



RECEIVED
JUL 23 1974
MISSOURI
Public Service Commission

FILED
SEP 3 1974
Public Service Commission

Issued: August 2, 1974

By R. R. SHOCKLEY, Vice President, Missouri-Illinois
Southwestern Bell Telephone Company
St. Louis, Missouri

Effective: September 3, 1974