

NO SUPPLEMENT TO THIS TARIFF WILL BE ISSUED EXCEPT FOR THE PURPOSE OF CANCELING THIS TARIFF.

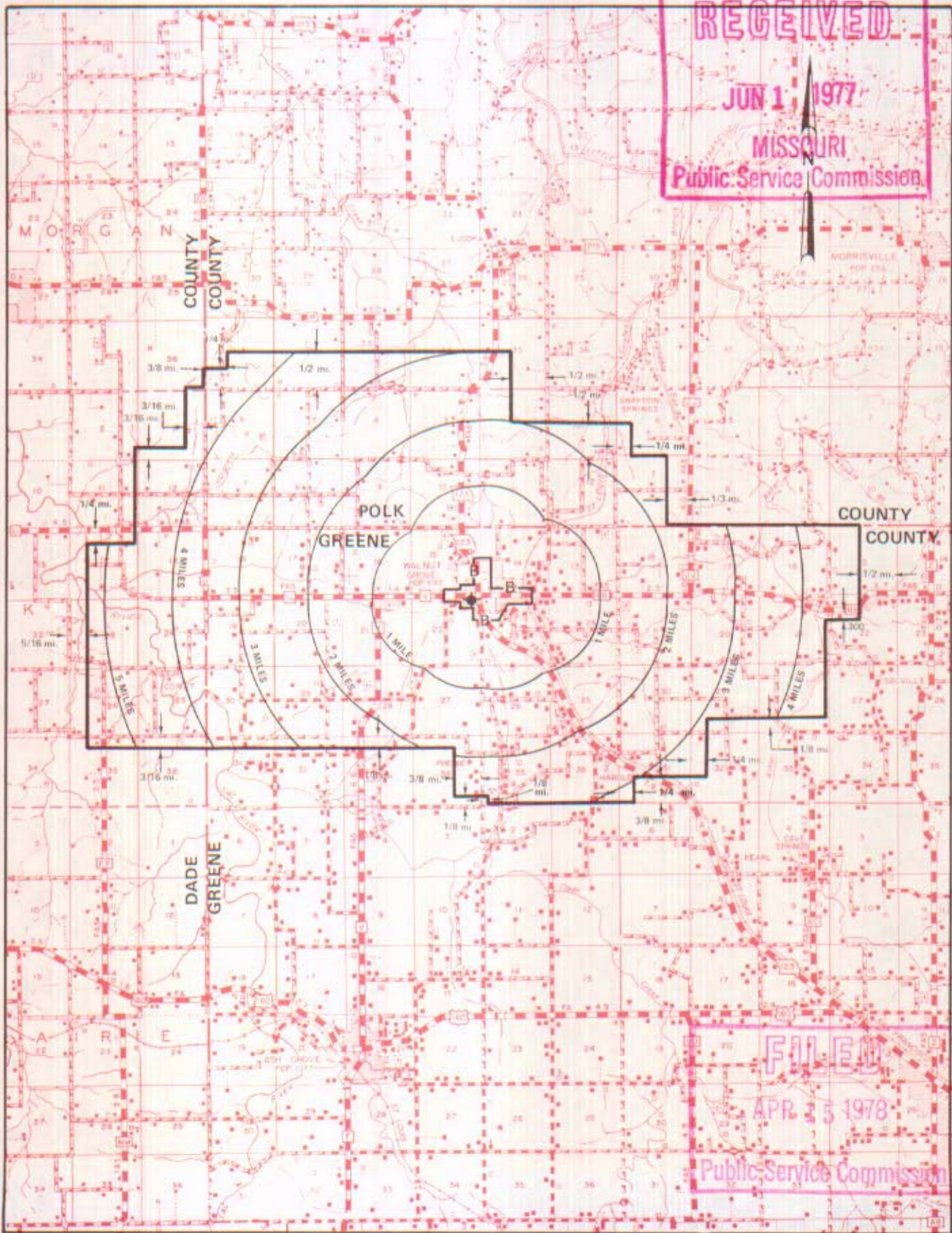
P. S. C. Mo. No. 17

Walnut Grove, Missouri

EXCHANGE AREA MAP

6th REVISED SHEET 3 REPLACING 5th REVISED SHEET 3

RECEIVED
JUN 1 1977
MISSOURI
Public Service Commission



T32N
T31N

T31N
T30N

T30N
T29N

R25W | R24W

R24W | R23W

By R. R. SHOCKLEY, Vice President, Missouri
Southwestern Bell Telephone Company
St. Louis, Missouri

Issued: June 1, 1977

Effective: APR 15 1978

FILED
APR 15 1978
Public Service Commission

CANCELLED - Missouri Public Service Commission - 05/01/2024 - TN-2024-0278 - JI-2024-0142

NO SUPPLEMENT TO THIS TARIFF WILL BE ISSUED EXCEPT FOR THE PURPOSE OF CANCELING THIS TARIFF.

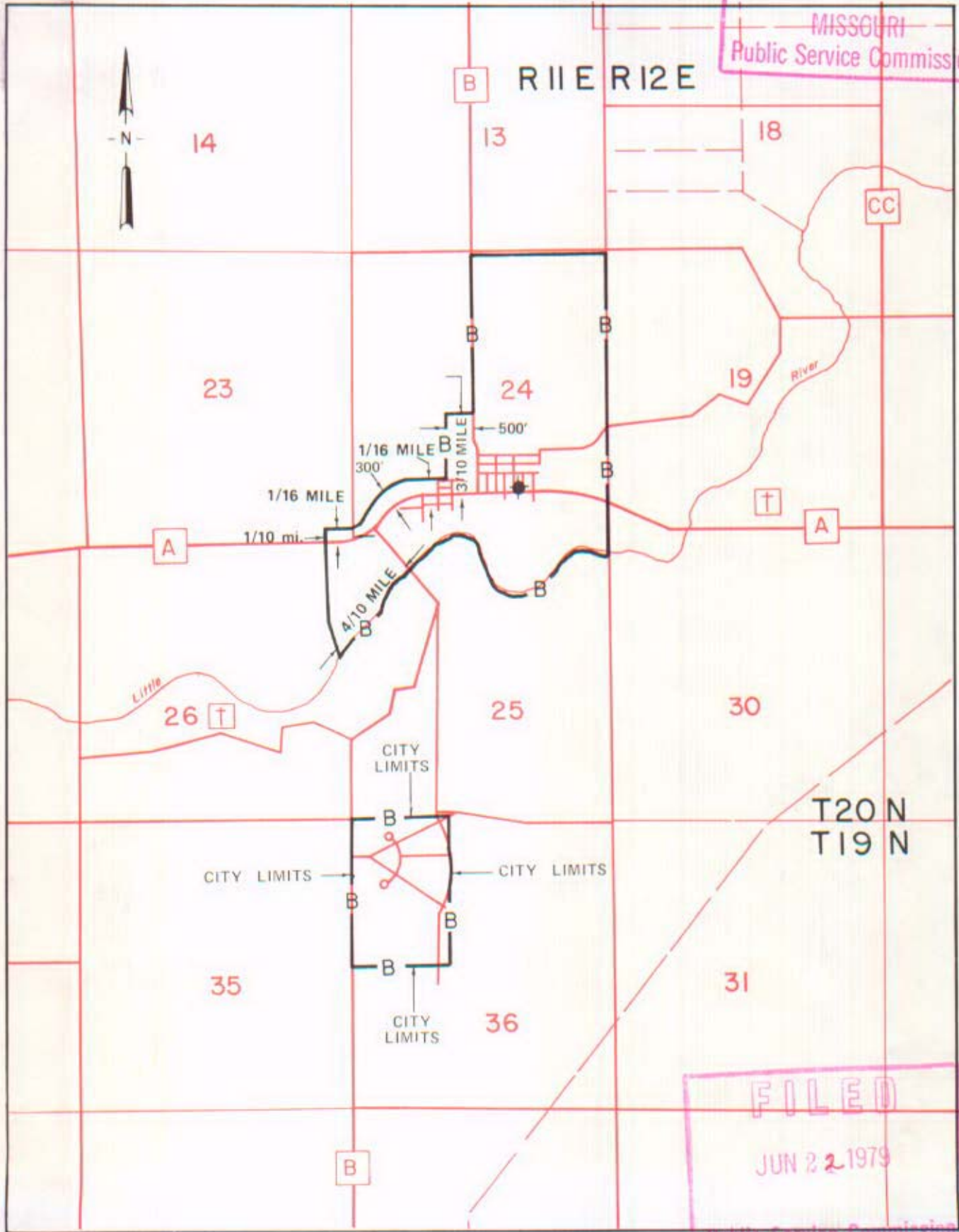
P. S. C. Mo. No. 17

BASE RATE AREA MAP

RECEIVED
Wardell, Missouri
4th REVISED SHEET 2
REPLACING 3rd REVISED SHEET 2

MAY 11 1979

MISSOURI
Public Service Commission



FILED
JUN 22 1979
Public Service Commission

By R. R. SHOCKLEY, Vice President, Missouri
Southwestern Bell Telephone Company
St. Louis, Missouri

Issued: May 22, 1979

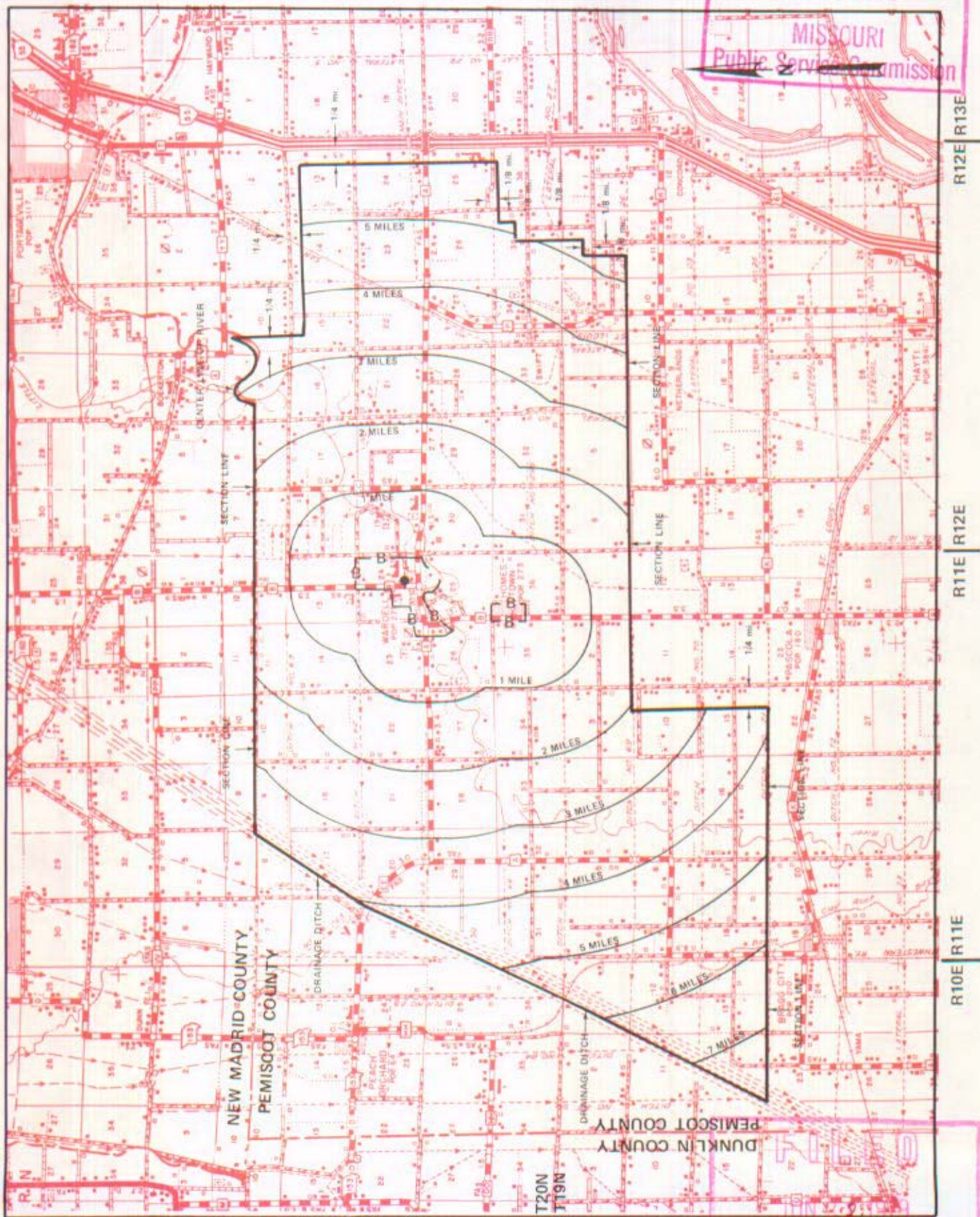
Effective: June 22, 1979

CANCELLED - Missouri Public Service Commission - 05/01/2024 - TN-2024-0278 - JI-2024-0142

NO SUPPLEMENT TO THIS TARIFF WILL BE ISSUED EXCEPT FOR THE PURPOSE OF CANCELING THIS TARIFF.

P. S. C. Mo. No. 17 EXCHANGE AREA MAP

Wardell, Missouri
RECEIVED
6th REVISED SHEET 3
REPLACING 5th REVISED SHEET 3
MAY 11 1979
MISSOURI
Public Service Commission



T21N
T20N

By R. R. SHOCKLEY, Vice President, Missouri
Southwestern Bell Telephone Company
St. Louis, Missouri

Issued: May 22, 1979

FILED
Public Service Commission
Effective: June 22, 1979

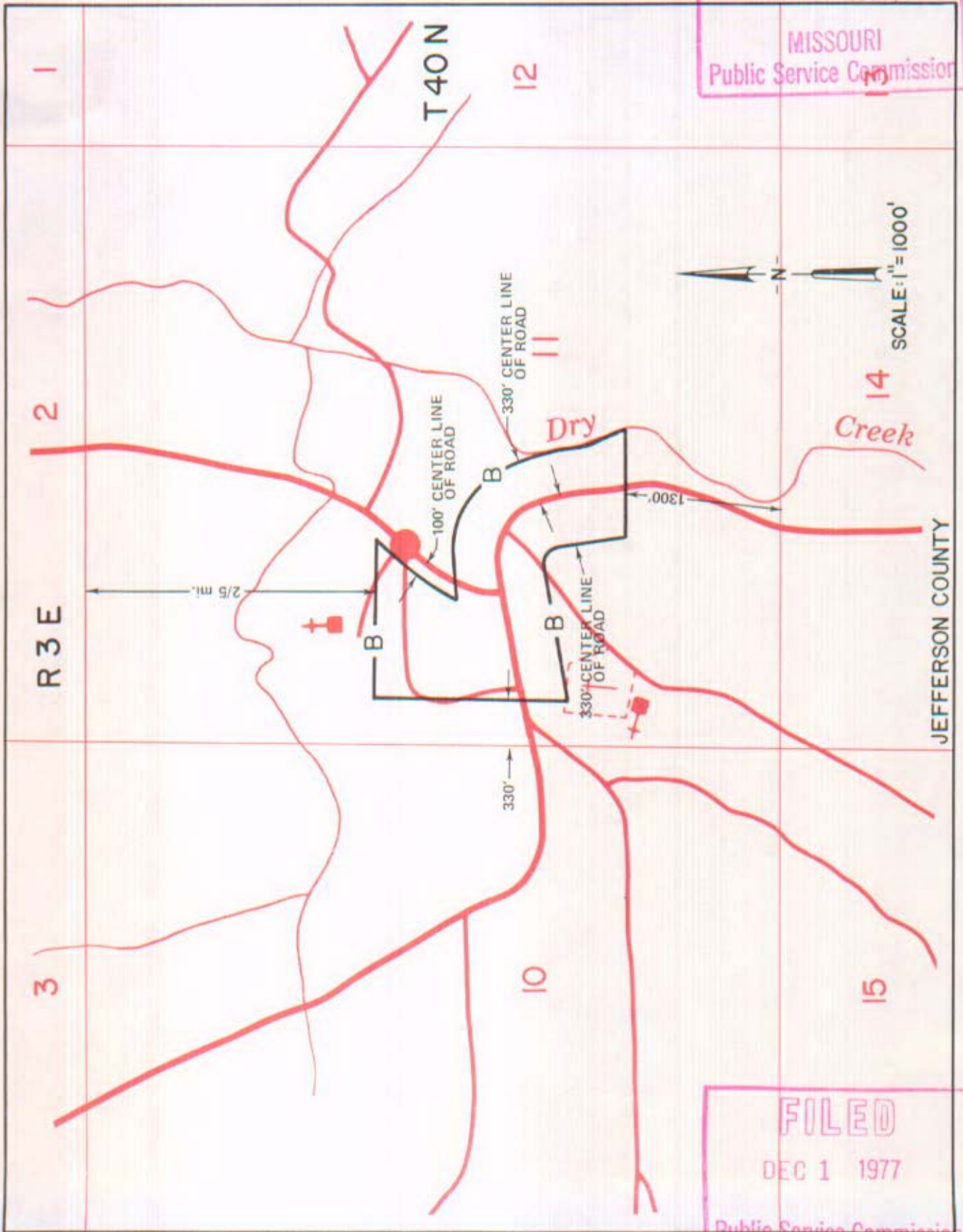
CANCELLED - Missouri Public Service Commission - 05/01/2024 - TN-2024-0278 - JI-2024-0142

NO SUPPLEMENT TO THIS TARIFF WILL BE ISSUED EXCEPT FOR THE PURPOSE OF CANCELING THIS TARIFF.

P. S. C. Mo. No. 17

BASE RATE AREA MAP

Ware, Missouri
RECEIVED
 1st REVISED SHEET 2
 REPLACING ORIGINAL SHEET 2
 MAY 20 1977
 MISSOURI
 Public Service Commission



FILED
 DEC 1 1977
 Public Service Commission

By R. R. SHOCKLEY, Vice President, Missouri
 Southwestern Bell Telephone
 St. Louis, Missouri

Issued: MAY 23 1977

Effective: DEC 1 1977

CANCELLED - Missouri Public Service Commission - 05/01/2024 - TN-2024-0278 - JI-2024-0142

NO SUPPLEMENT TO THIS TARIFF WILL BE ISSUED EXCEPT FOR THE PURPOSE OF CANCELING THIS TARIFF.

P. S. C. Mo. No. 17

EXCHANGE AREA MAP

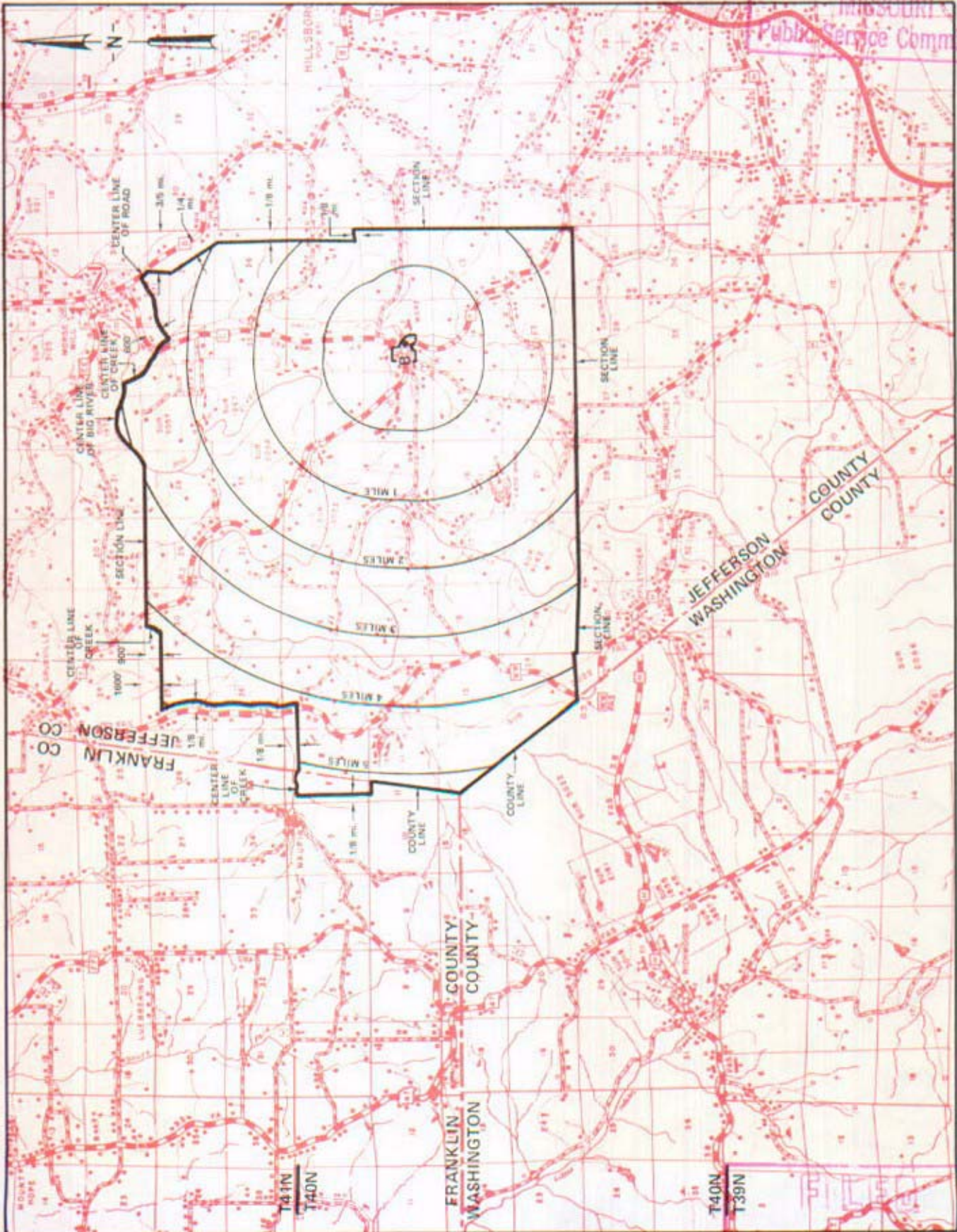
REPLACING 3rd REVISED SHEET 3

4th REVISED SHEET 3

MAY 20 1977

RECEIVED
Ware, Missouri

MISSOURI
Public Service Commission



By R. R. SHOCKLEY, Vice President, Missouri
Southwestern Bell Telephone Company
St. Louis, Missouri

Issued: May 23, 1977

DEC 1 1977

Public Service Commission
DEC 1 1977
Effective

CANCELLED - Missouri Public Service Commission - 05/01/2024 - TN-2024-0278 - JI-2024-0142

NO SUPPLEMENT TO THIS TARIFF WILL BE ISSUED EXCEPT FOR THE PURPOSE OF CANCELING THIS TARIFF.

P. S. C. Mo. No. 17

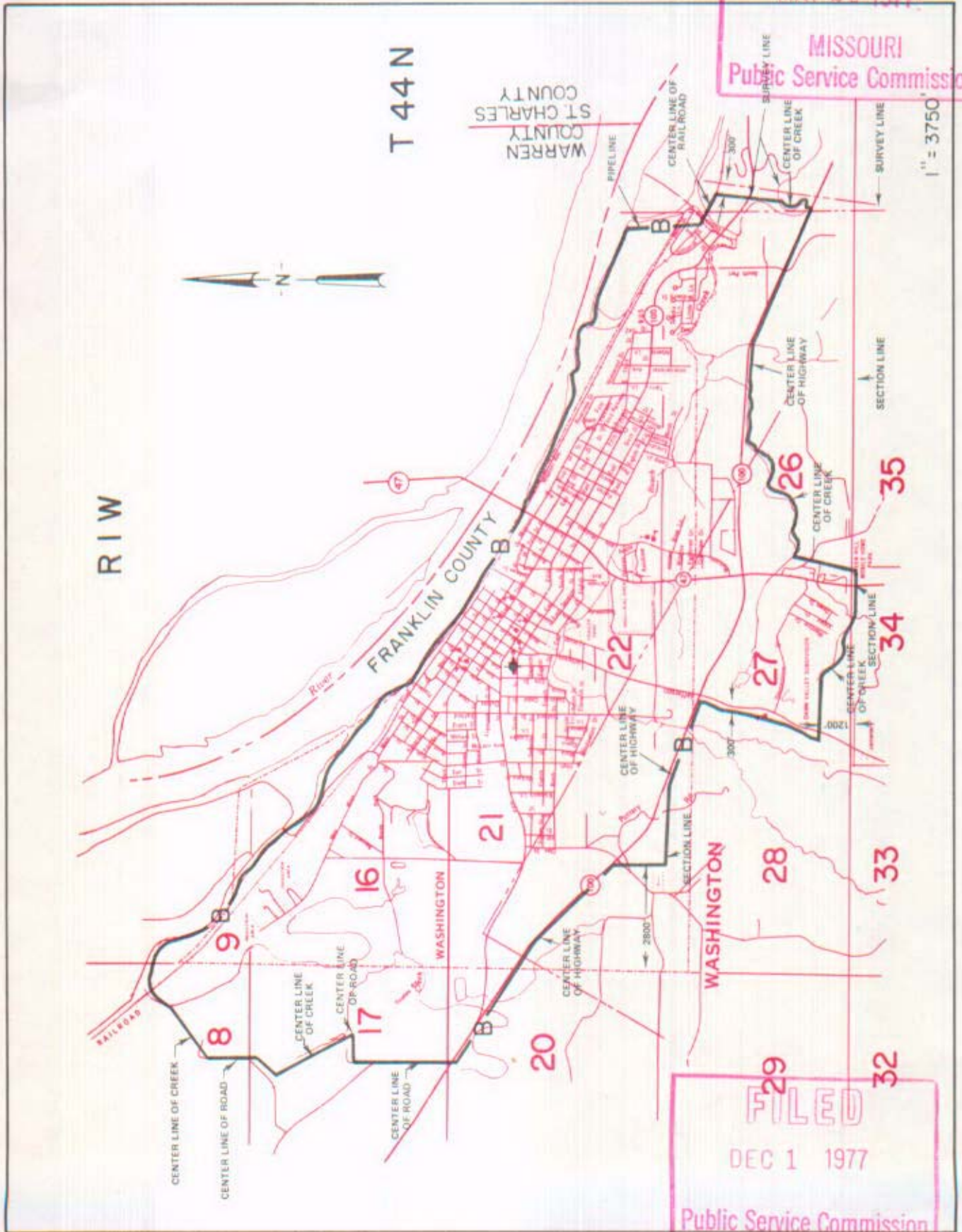
BASE RATE AREA MAP

Washington, Missouri
RECEIVED
2nd REVISED SHEET 2
REPLACING 1st REVISED SHEET 2

MAY 20 1977

MISSOURI
Public Service Commission

1" = 3750'



FILED
DEC 1 1977
Public Service Commission

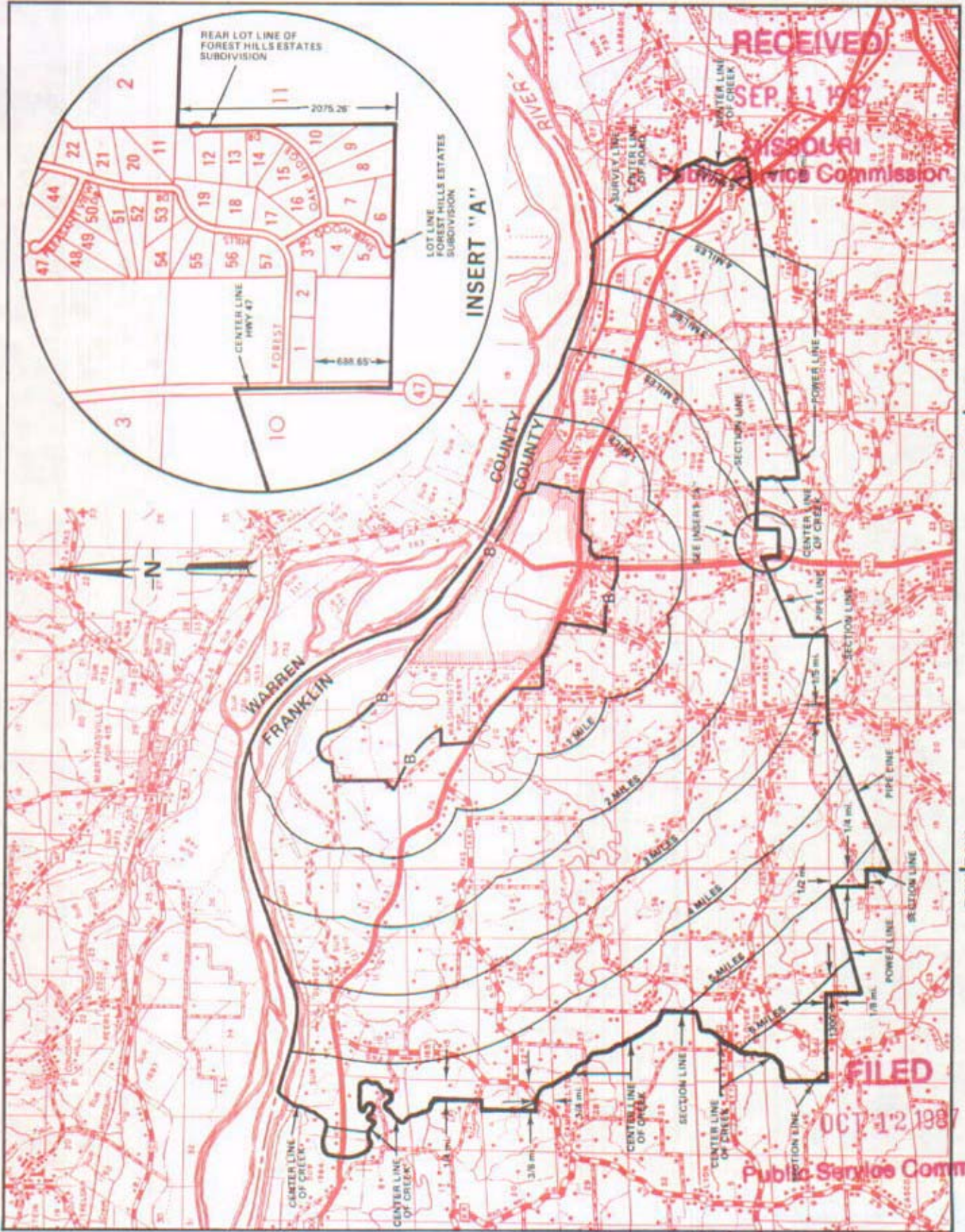
By R. R. SHOCKLEY, Vice President, Missouri
Southwestern Bell Telephone
St. Louis, Missouri

Issued: MAY 23 1977

Effective: DEC 1 1977

CANCELLED - Missouri Public Service Commission - 05/01/2024 - TN-2024-0278 - JI-2024-0142

EXCHANGE AREA MAP



CANCELLED - Missouri Public Service Commission - 05/01/2024 - TN-2024-0278 - JI-2024-0142

SBC PSC MO #17
Webb City, Missouri
4th Revised Sheet 2
Replacing 3rd Revised Sheet 2

Non-Scannable Map

(Is viewable in the Data Center
200 Madison Street, 1st Floor
Jefferson City MO)

SBC Missouri
Base Rate Area Map
Webb City
PSC MO No. 17
3rd Revised Sheet 2

Non-Scannable Map

(Viewable in the Data Center
located at:
200 Madison Street, 1st Floor
Jefferson City MO)

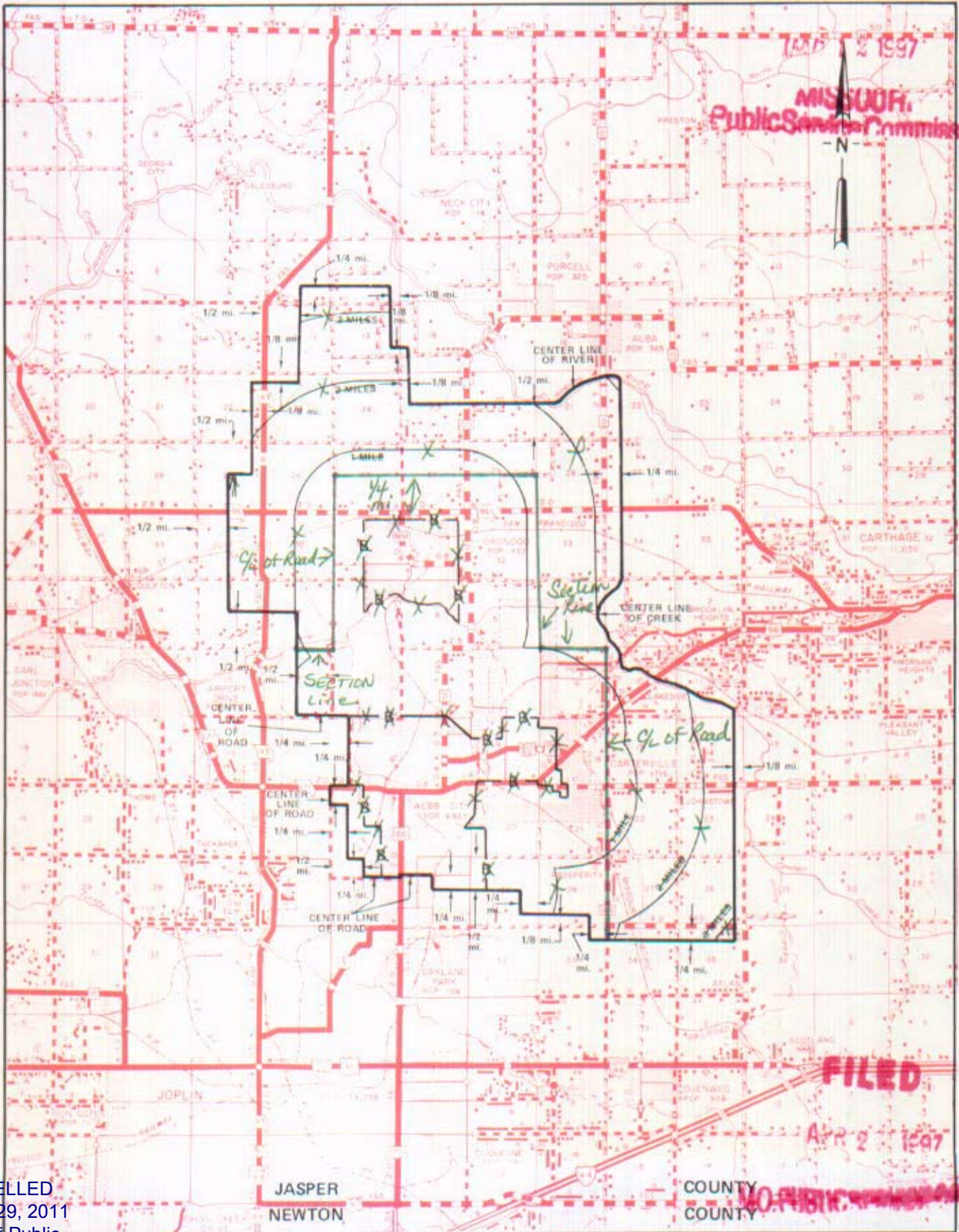
NO SUPPLEMENT TO THIS TARIFF WILL BE ISSUED EXCEPT FOR THE PURPOSE OF CANCELING THIS TARIFF.

P. S. C. Mo. No. 17 EXCHANGE AREA MAP

Webb City, Missouri

12th REVISED SHEET 3
REPLACING 10th REVISED SHEET 3

RECEIVED



T30N
T29N

T29N
T28N

T28N
T27N

FILED

APR 2 1977

~~NO PUBLIC WORKS~~

CANCELLED
October 29, 2011
Missouri Public
Service Commission
JI-2012-0133

03-14-97

R33W | R32W | R31W

By *R. R. SHOCKLEY*, Vice President, Missouri

Southwestern Bell Telephone Company
St. Louis, Missouri

By Kay E. Jennings, President - Missouri

04-27-97

~~NOV 01 1970~~

Issued: July 11, 1977

Effective: NOV 01 1970

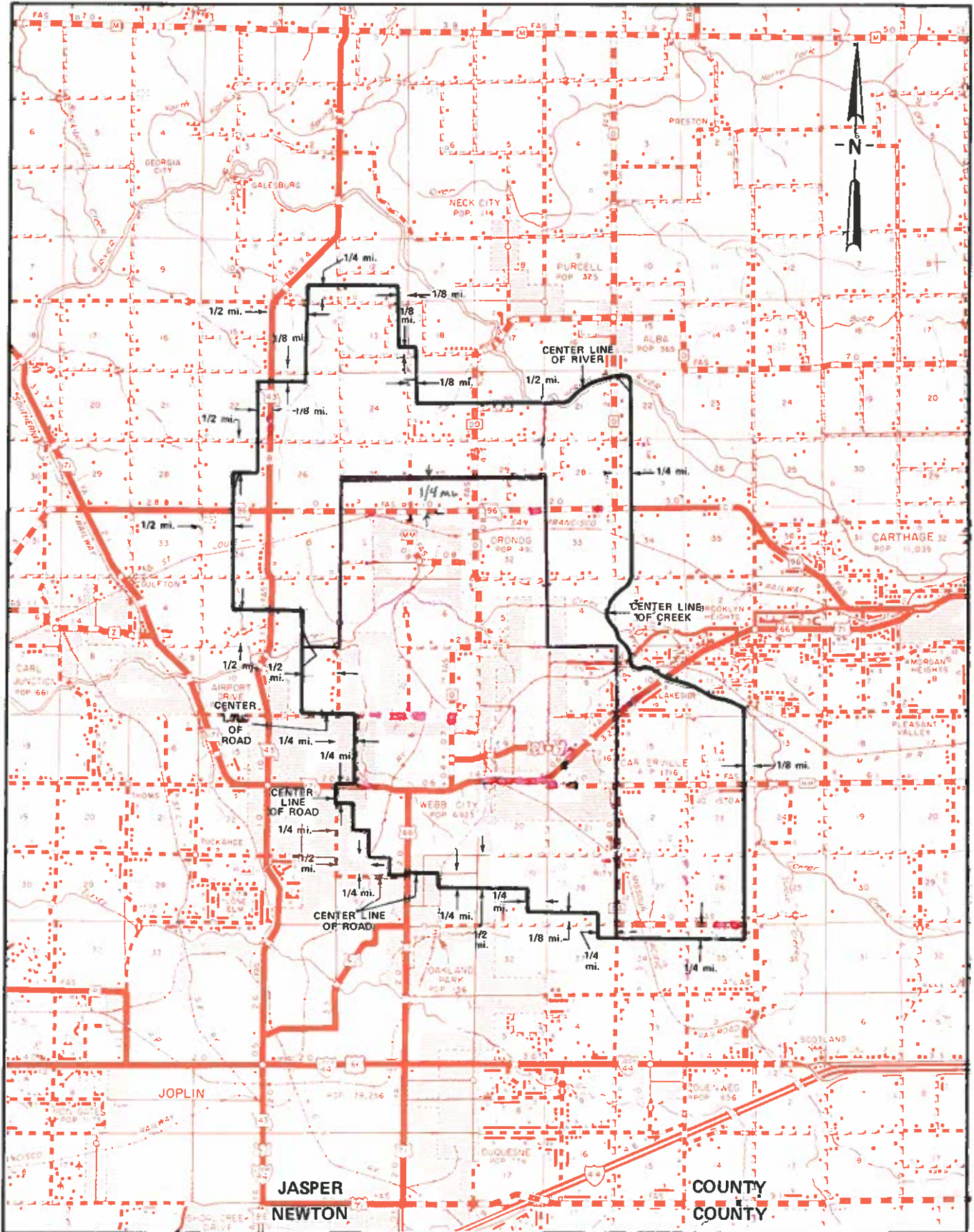
NO SUPPLEMENT TO THIS TARIFF WILL BE ISSUED EXCEPT FOR THE PURPOSE OF CANCELING THIS TARIFF.

P. S. C. Mo. No. 17 EXCHANGE AREA MAP

Webb City, Missouri

13th Revised Sheet 3
Replacing 12th Revised Sheet 3

CANCELLED - Missouri Public Service Commission - 05/01/2024 - TN-2024-0278 - JI-2024-0142



R33W | R32W | R31W

By JOHN SONDRAG, President - Missouri Public Service Commission
St. Louis, Missouri

Filed

Issued: September 29, 2011

Effective: October 29, 2011

JI-2012-0133

CANCELLED - Missouri Public Service Commission - 05/01/2024 - TN-2024-0278 - JI-2024-0142

WEBSTER GROVES

see

St. Louis District Exchange Rates

under

St. Louis

June 1, 1937

CANCELLED - Missouri Public Service Commission - 05/01/2024 - TN-2024-0278 - JI-2024-0142

NO SUPPLEMENT TO THIS TARIFF WILL BE ISSUED EXCEPT FOR THE PURPOSE OF CANCELING THIS TARIFF.

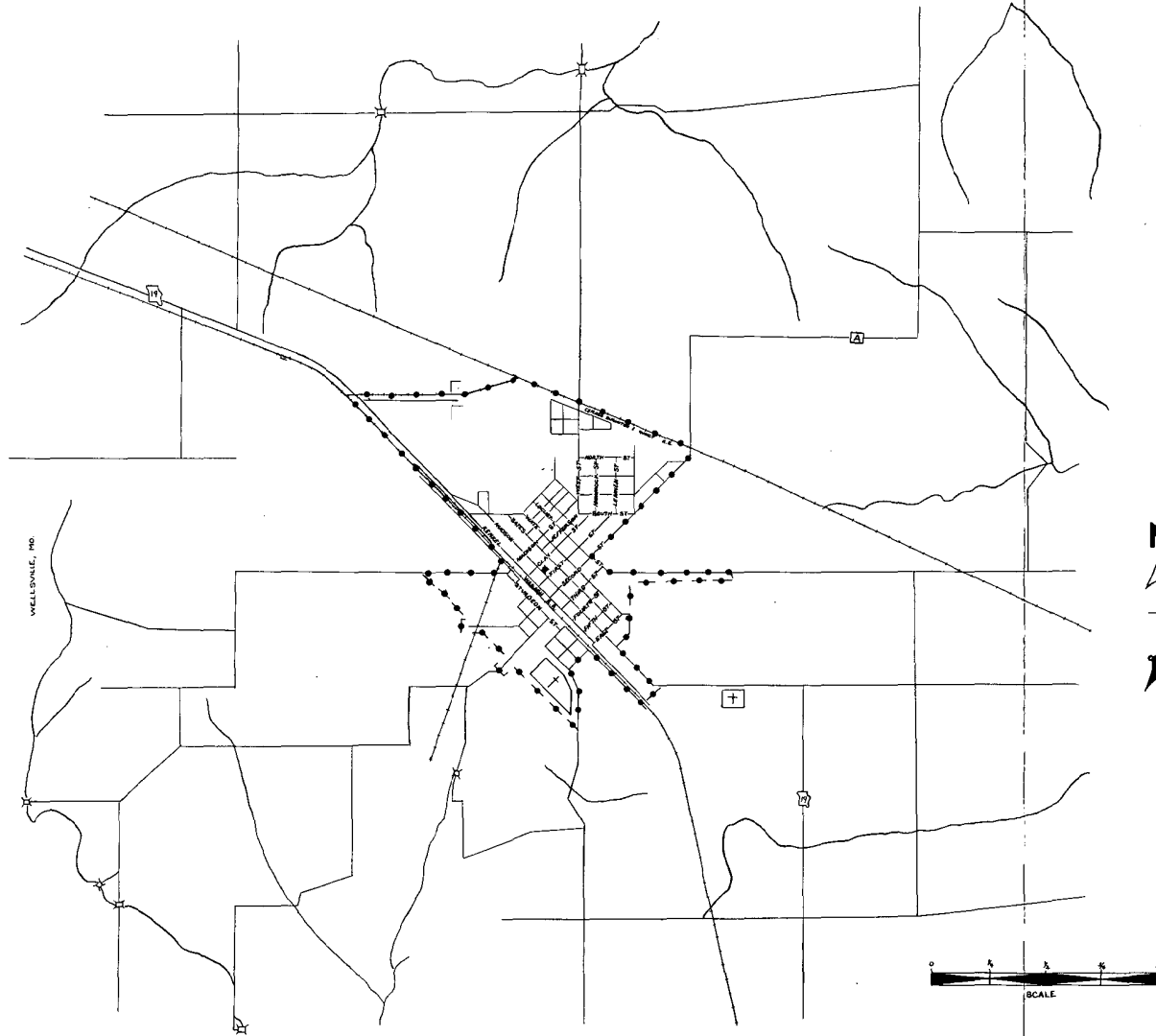
P. S. C. Mo. No. 17
BASE RATE AREA MAP

Wellsville, Missouri
ORIGINAL SHEET 2
REPLACING ORIGINAL SHEET 1-A

RECEIVED
JUL 21 1952
MISSOURI
Public Service Comm.

FILED
AUG 21 1952

PUBLIC SERVICE COMMISSION



CODE
BELL CENTRAL OFFICE: +
BASE RATE AREA LIMITS: ●●●●

Issued: July 21, 1952

By H. R. TOWLES, General Manager
Southwestern Bell Telephone Company
St. Louis, Missouri

Effective: August 21, 1952

NO SUPPLEMENT TO THIS TARIFF WILL BE ISSUED EXCEPT FOR THE PURPOSE OF CANCELING THIS TARIFF.

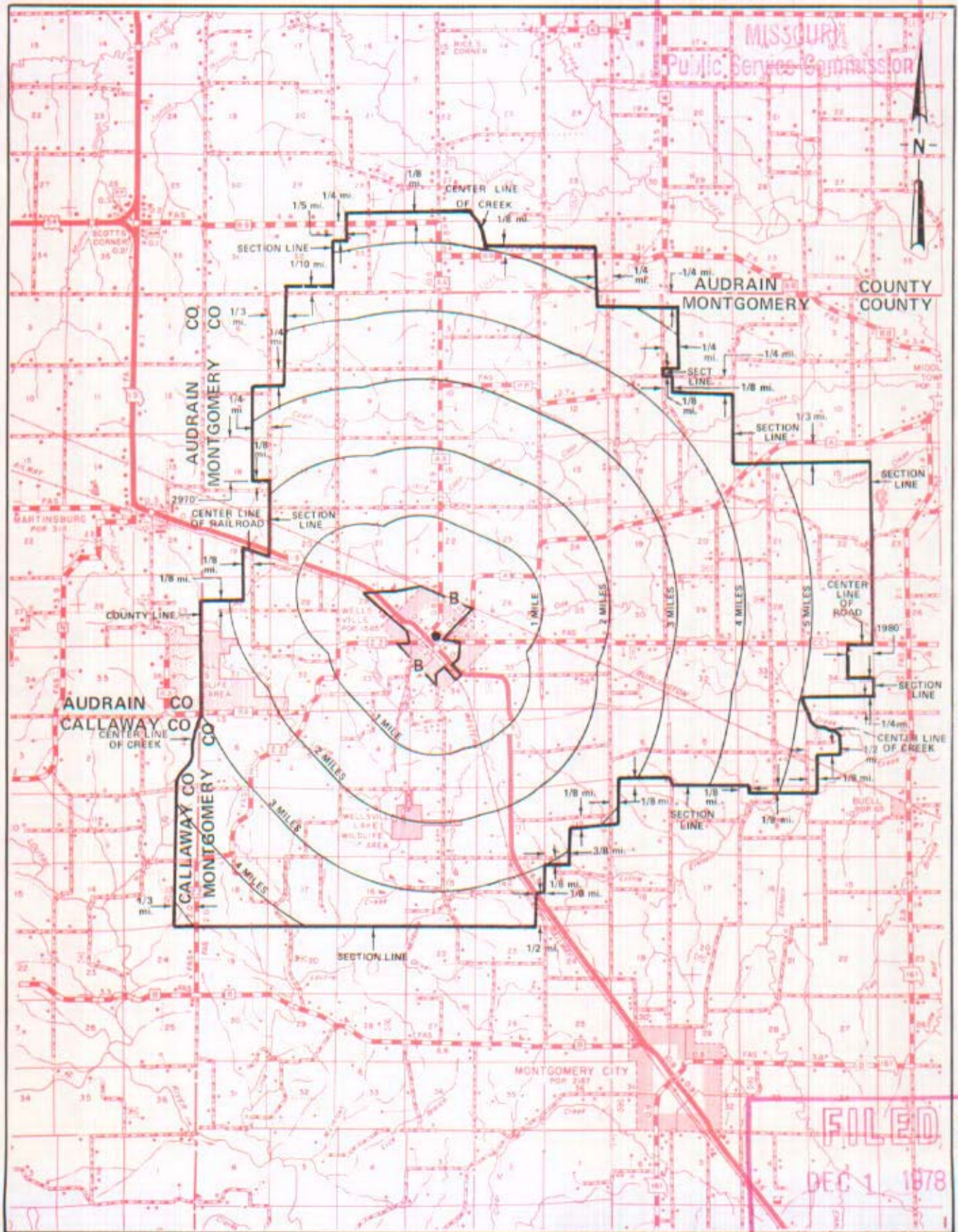
P. S. C. Mo. No. 17

EXCHANGE AREA MAP

Wellsville, Missouri
REPLACING 5th REVISED SHEET 3
4th REVISED SHEET 3

FEB 14 1977

MISSOURI
Public Service Commission



T51N
T50N

T50N
T49N

T49N
T48N

FILED
DEC 1 1978
Public Service Commission

R7W | R6W

R6W | R5W

By R. R. SHOCKLEY, Vice President, Missouri
Southwestern Bell Telephone Company

St. Louis, Missouri

Issued: February 15, 1977

Effective: DEC 1 1978

CANCELLED - Missouri Public Service Commission - 05/01/2024 - TN-2024-0278 - JI-2024-0142

SBC PSC MO #17
Westphalia, Missouri
Original Sheet 2
Replacing Ozark Central Tel. Co.
P.S.C. Mo. No. 1
Original Sheet 2

Non-Scannable Map

(Is viewable in the Data Center
200 Madison Street, 1st Floor
Jefferson City MO)

NO SUPPLEMENT TO THIS TARIFF WILL BE ISSUED EXCEPT FOR THE PURPOSE OF CANCELING THIS TARIFF.

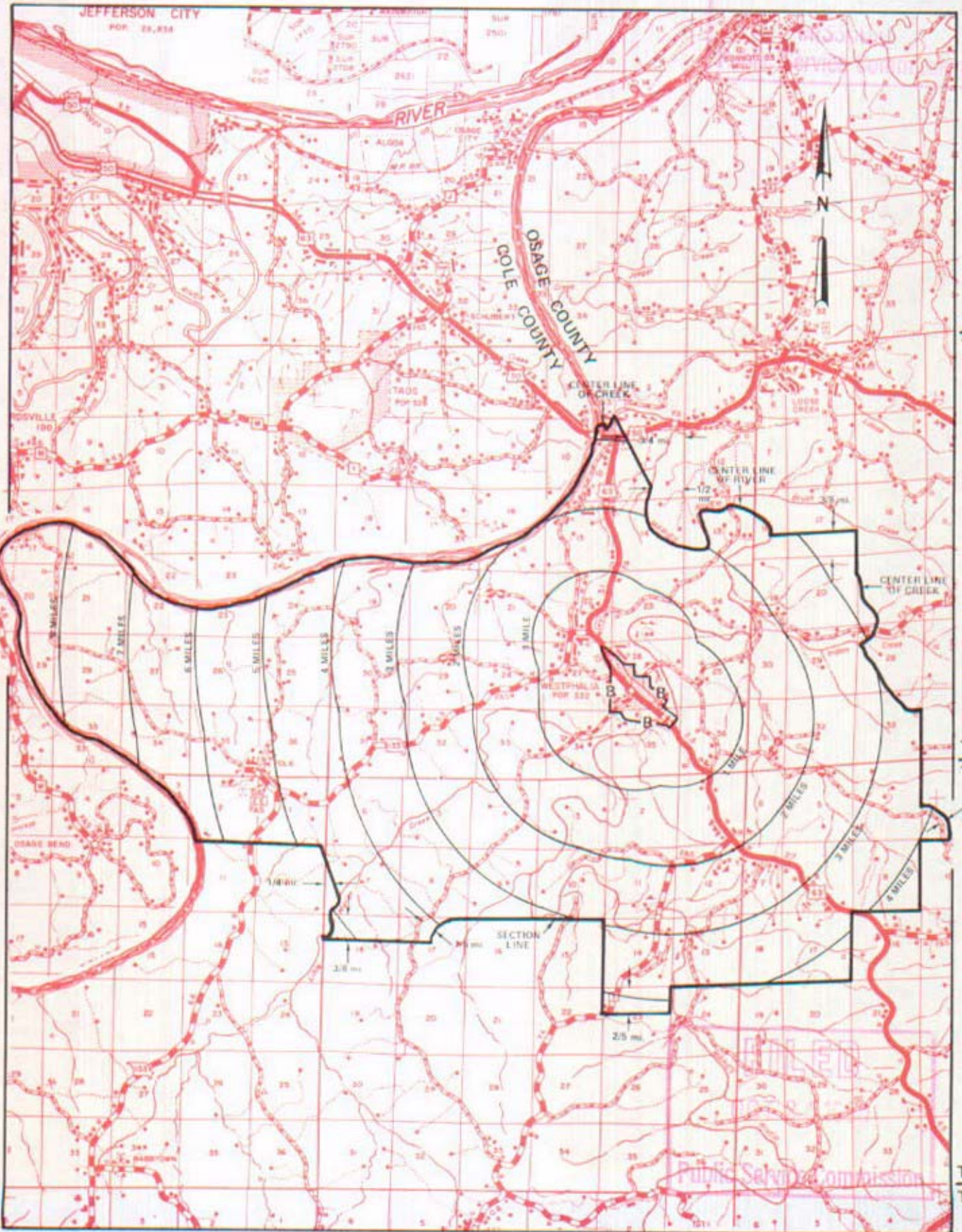
P. S. C. Mo. No. 17

Westphalia, Missouri

EXCHANGE AREA MAP

7th REVISED SHEET 3
REPLACING 6th REVISED SHEET 3

SEP 12 1980



R11W | R10W | R10W | R9W

By R. R. SHOCKLEY, Vice President, Missouri
Southwestern Bell Telephone Company
St. Louis, Missouri

Issued: SEPT 23, 1980

Effective: OCT 24, 1980

CANCELLED - Missouri Public Service Commission - 05/01/2024 - TN-2024-0278 - JI-2024-0142

No supplement to this tariff will be issued except for the purpose of canceling this tariff

WILLARD, MISSOURI
3rd Revised Sheet 2
Replacing 2nd Revised Sheet 2

BASE RATE AREA MAP

THIS AREA IS INCLUDED IN THE SPRINGFIELD METROPOLITAN EXCHANGE.

RECEIVED

MAY 25 1993

MO. PUBLIC SERVICE COMM.

FILED

JUL 07 1993
92-306

MO. PUBLIC SERVICE COMM.

Issued: **MAY 25 1993**

Effective: **JUL 07 1993**

By A. D. ROBERTSON, Assistant Vice President-External Affairs
Southwestern Bell Telephone Company
St. Louis, Missouri

CANCELLED - Missouri Public Service Commission - 05/01/2024 - TN-2024-0276 - JI-2024-0142

No supplement to this tariff will be issued except for the purpose of canceling this tariff

WILLARD, MISSOURI
14th Revised Sheet 3
Replacing 13th Revised Sheet 3

EXCHANGE AREA MAP

RECEIVED

THIS AREA IS INCLUDED IN THE SPRINGFIELD METROPOLITAN EXCHANGE. MAY 25 1993

MO. PUBLIC SERVICE COMM.

CANCELLED - Missouri Public Service Commission - 05/01/2024 - TN-2024-0278 - JI-2024-0142

FILED

JUL 07 1993
92-306

MO. PUBLIC SERVICE COMM.

Issued: MAY 25 1993

Effective: JUL 07 1993

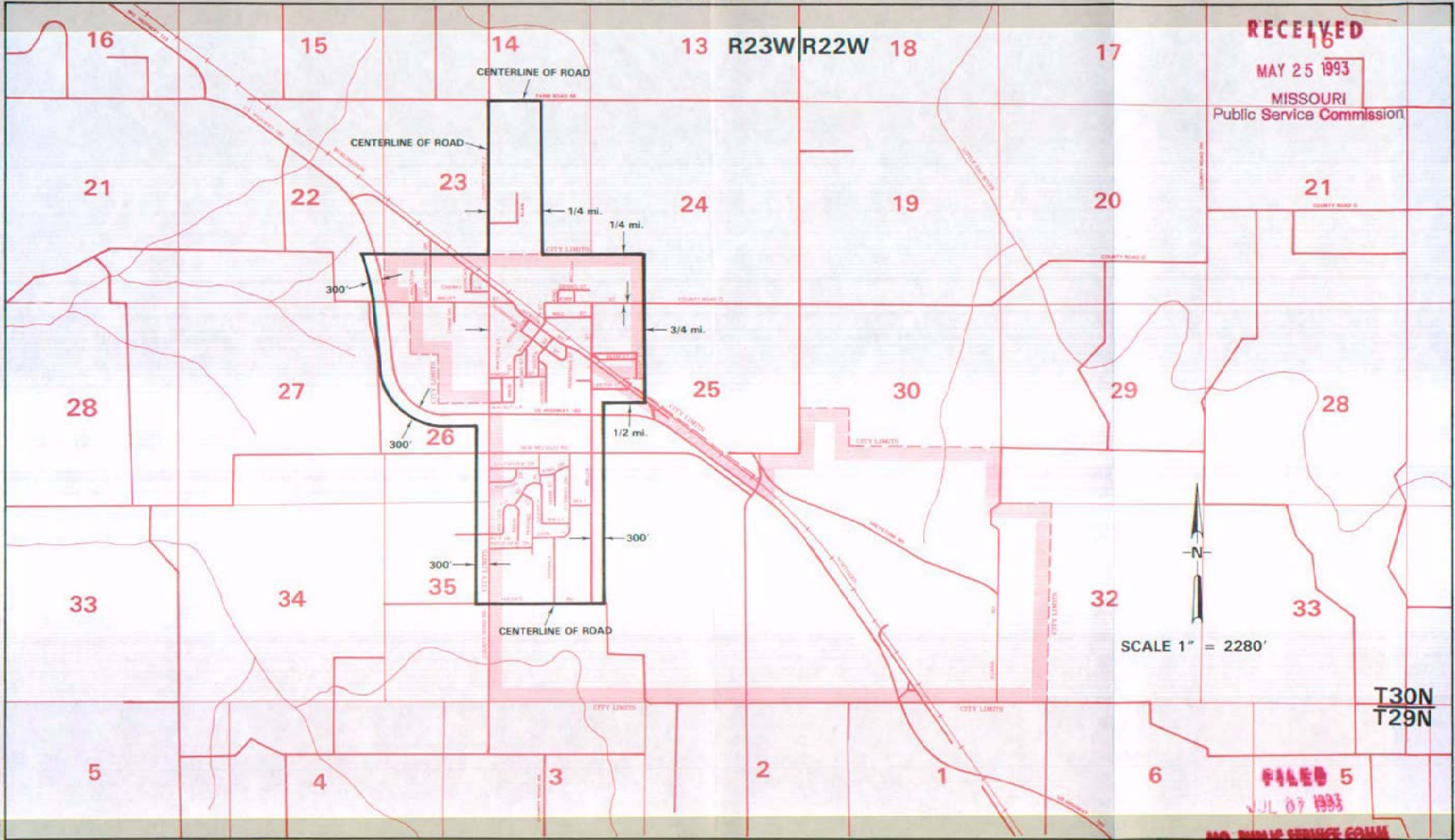
By A. D. ROBERTSON, Assistant Vice President-External Affairs
Southwestern Bell Telephone Company
St. Louis, Missouri

NO SUPPLEMENT TO THIS TARIFF WILL BE ISSUED EXCEPT FOR THE PURPOSE OF CANCELING THIS TARIFF.

SPRINGFIELD METROPOLITAN EXCHANGE
Willard Zone
ORIGINAL SHEET 8-A

P. S. C. Mo. No. 17
BASE RATE AREA MAP

CANCELLED - Missouri Public Service Commission - 05/01/2024 - TN-2024-0278 - JI-2024-0142



RECEIVED
MAY 25 1993
MISSOURI
Public Service Commission

FILED 5
JUL 07 1993
MO. PUBLIC SERVICE COMM.

By A. D. ROBERTSON, Assistant Vice President - External Affairs
Southwestern Bell Telephone Company
St. Louis, Missouri

Issued: MAY 25, 1993

Effective: JULY 7, 1993

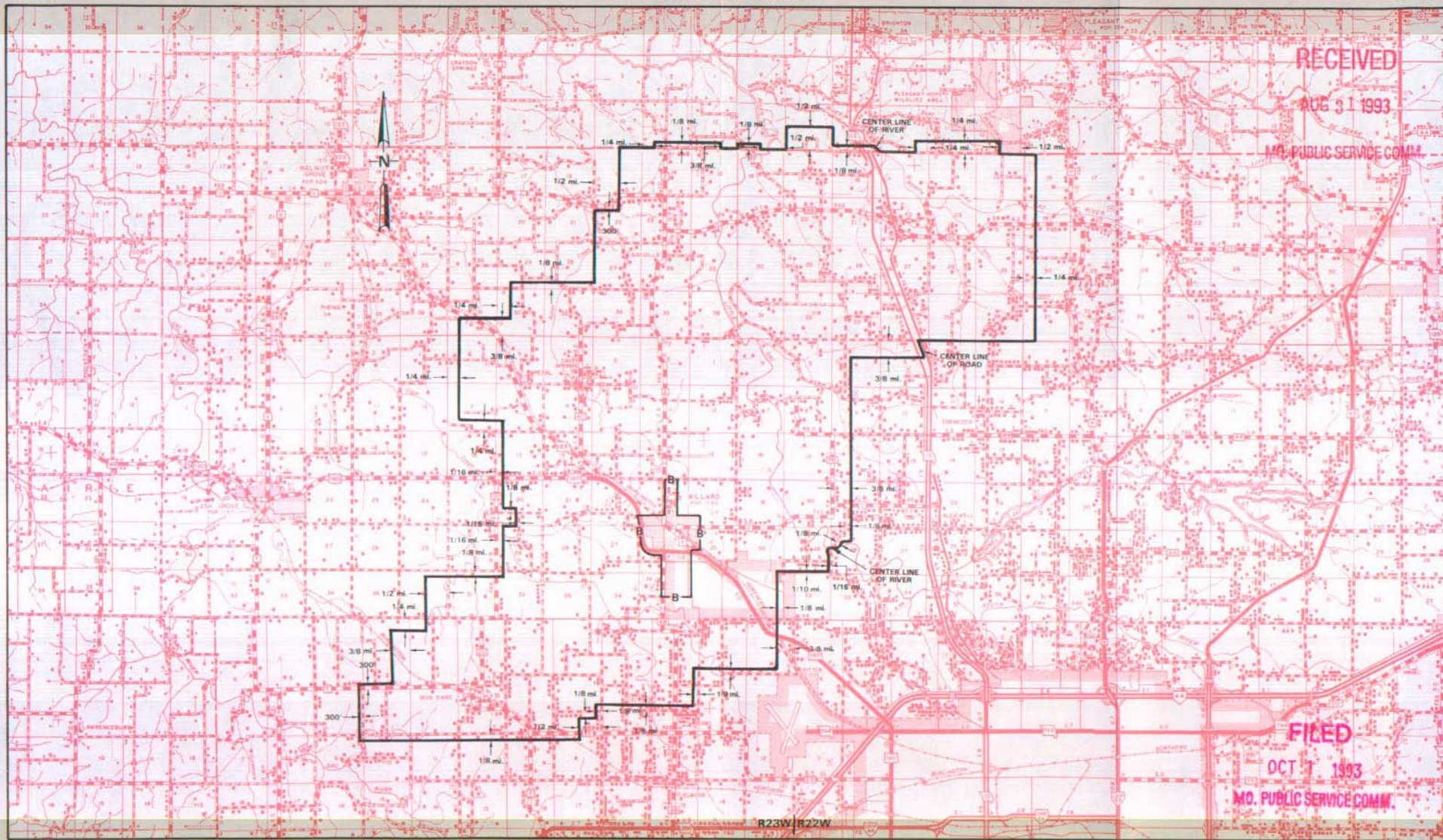
NO SUPPLEMENT TO THIS TARIFF WILL BE ISSUED EXCEPT FOR THE PURPOSE OF CANCELING THIS TARIFF.

SPRINGFIELD METROPOLITAN EXCHANGE
Willard Zone

P. S. C. Mo. No. 17 ZONE AREA MAP

1st REVISED SHEET 8-B
REPLACING ORIGINAL SHEET 8-B

CANCELLED - Missouri Public Service Commission - 05/01/2024 - TN-2024-0278 - JI-2024-0142



By D. R. KAESHOFER, Division Manager-Regulatory & Industry Relations
Southwestern Bell Telephone Company
St. Louis, Missouri

Issued: SEPTEMBER 1, 1993

Effective: OCTOBER 1, 1993

SBC PSC MO #17

Wyatt, Missouri

Original Sheet 2

Replacing Southeast Missouri Telephone Company

P.S.C. Mo. No. 2

1st Revised Sheet 2

Non-Scannable Map

(Is viewable in the Data Center
200 Madison Street, 1st Floor
Jefferson City MO)

NO SUPPLEMENT TO THIS TARIFF WILL BE ISSUED EXCEPT FOR THE PURPOSE OF CANCELING THIS TARIFF.

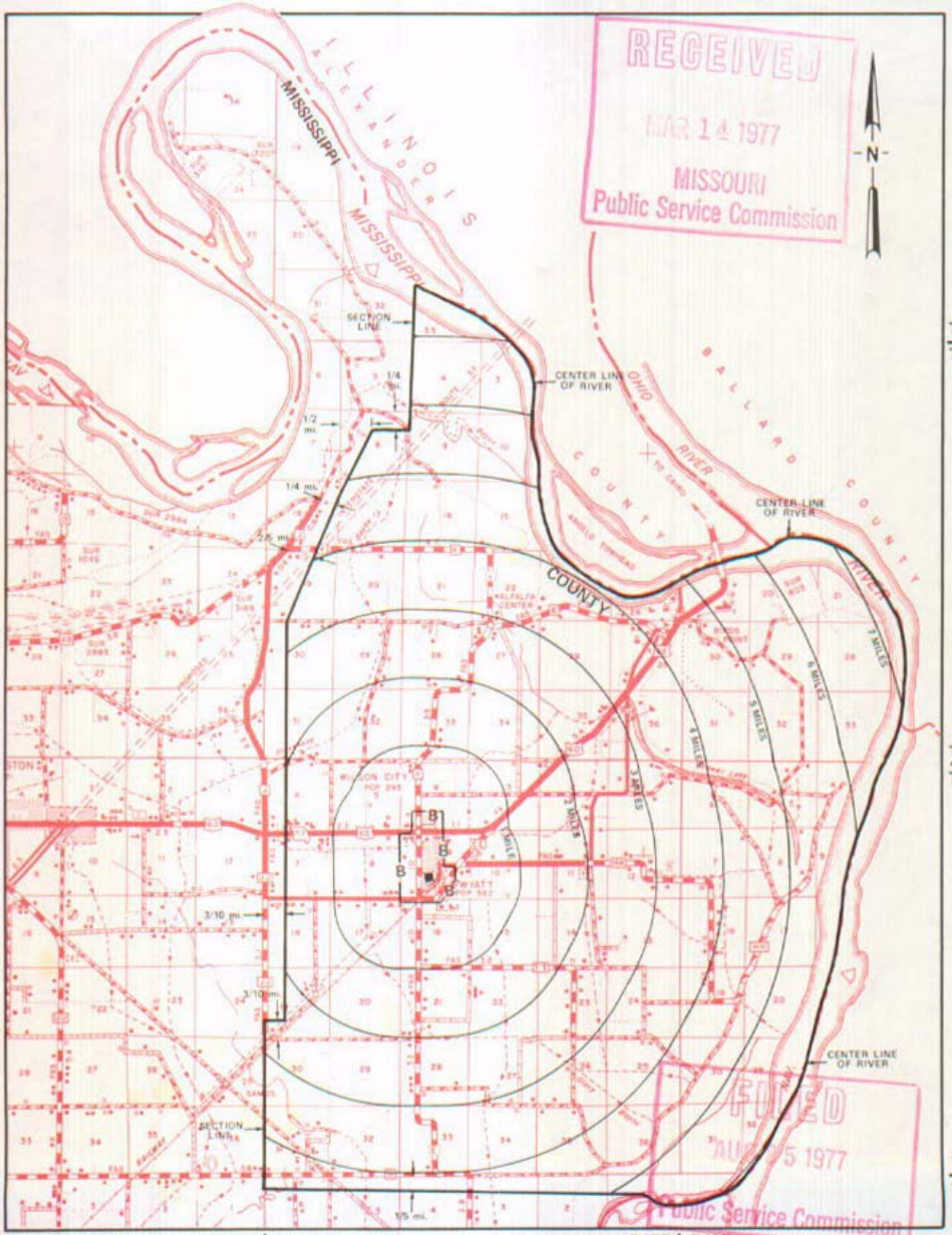
P. S. C. Mo. No. 17

Wyatt, Missouri

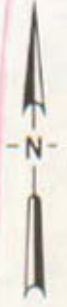
EXCHANGE AREA MAP

REPLACING 2nd REVISED SHEET 3
1st REVISED SHEET 3

CANCELLED - Missouri Public Service Commission - 05/01/2024 - TN-2024-0278 - JI-2024-0142



RECEIVED
 MAR 14 1977
 MISSOURI
 Public Service Commission



FOILED
 AUG 25 1977
 Missouri Public Service Commission

R16E | R17E | R17E | R18E

By R. R. SHOCKLEY, Vice President, Missouri
 Southwestern Bell Telephone Company

Issued: March 15, 1977

Effective: AUG 25 1977