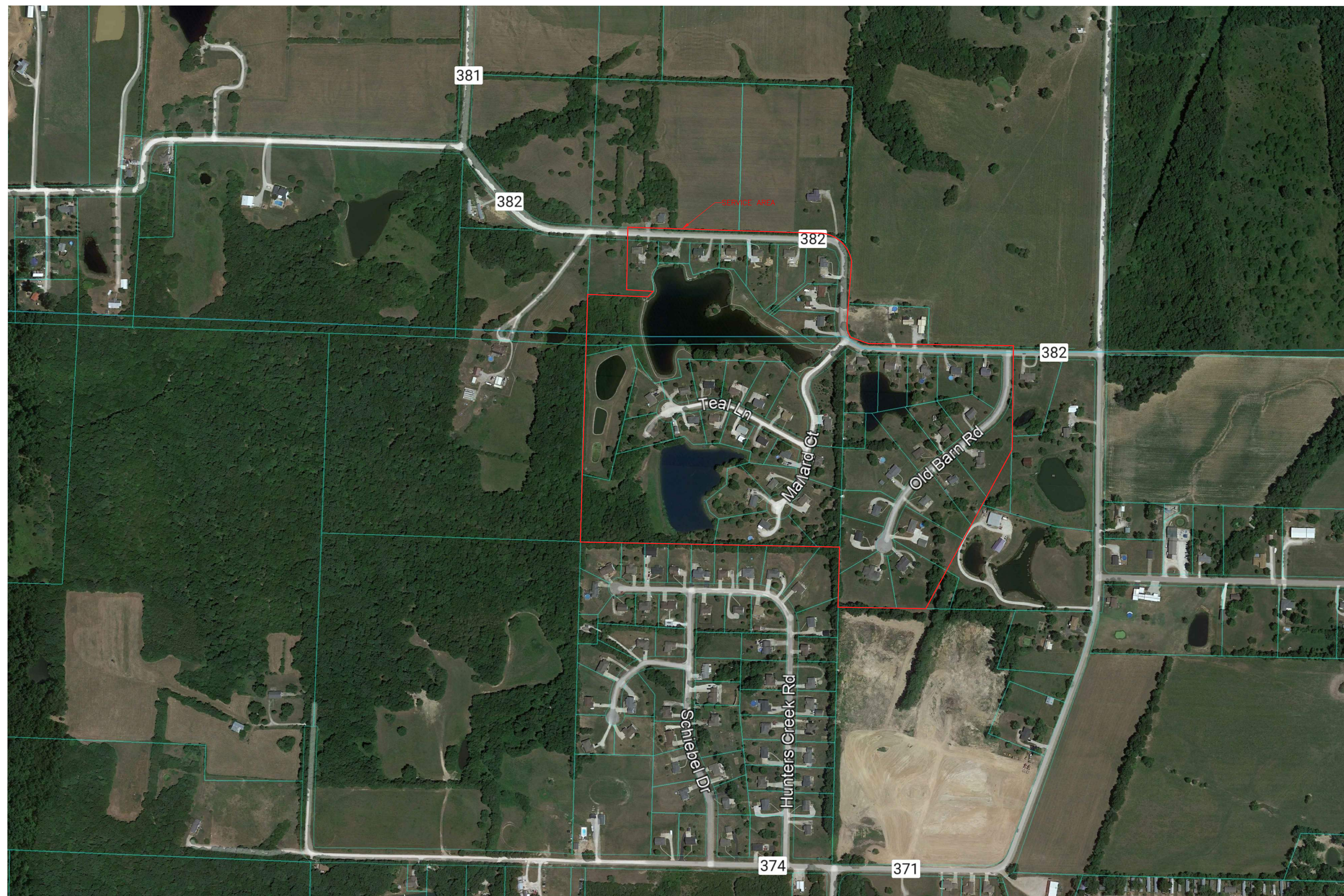
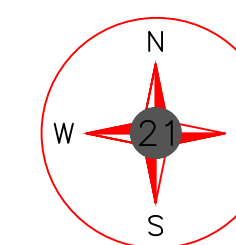


**PSC MAP  
GOLDEN POND - MISSOURI AMERICAN WATER COMPANY  
(WASTEWATER)  
CALLAWAY, MO**



Utility Note Disclaimer:

The utilities shown hereon are depicted based on addresses provided by the system manager. 21 Design Group, Inc performed no field verification of the layout and are unable to determine the exact location at this time. The location represents approximate location only and should not be construed as being 100% accurate. It is shown to provide general service area of the system to assist with ordering title work and preparation of scope for a License Land Surveyor. This sketch should not be used to interpret encroachments.

DATE:	11/11/24
PROJECT NO:	0596-23
DRAWN BY:	K.M.F.
SCALE:	
SHEET NAME:	SERVICE AREA MAP

**21  
DESIGN  
GROUP INC.**

1351 Jefferson, Suite 301  
Washington, MO 63090

mail@21designgroup.net  
P: 636-432-5029