

Supplemental
Appendix 1 to
Amended Application



Project Name: Cooper Area Connections **IFB** **Revision:** 000AB
Project Engineer: Justin Wenk **Project Manager:** Sam Gardner **Date:** 01/17/2025
Line Name: California-Cooper-7099
Work Order: UEC10934 **MAXIMO #:** _____ **TP Number:** TP-1760
File Path: [TP-1760 Cooper BAAH > IFB > T-Line Electrical](#)

Instructions: Fill out the fields above, and select IFB or IFC. Enter the project specific contacts listed below. Enter the package document information as described in the "Package Components" section of this attachment. Complete Attachment C of TLG-30_Transmission Line Project Estimate Scoping ("Project Engineering Status Summary & Change Log"). Once complete, attach this Letter of Transmittal with TLG-30 Attachment C to the appropriate bid/construction package and submit in accordance with TL-07_Transmission Line Bid and Construction Package Transmittal.

To (at all submittals):

Project Manager	Sam Gardner	SGardner2@ameren.com
Project Controls	Sonia Navarrete	SNavarrete@ameren.com
Project Controls	Danielle Lewis	DLewis3@Ameren.com
Project Construction Supervisor	Chris Broyles	CBroyles@ameren.com
Project Line Civil Engineer (when applicable)	Jeffrey Carrill	JCarril@ameren.com
Transmission Construction Quality	Chuck Twellmann	ctwellmann@ameren.com
Transmission Construction Supervision	Lance McNeel	lmcneel@ameren.com
Transmission Construction Supervision	Kirk Prenger	kprenger@ameren.com
Transmission Construction Inspection	Darren Janes	djanes@ameren.com
Transmission Construction Inspection	Ryan Connor	rconnor@ameren.com
Transmission Construction	Greg Samaniego	gsamaniego@ameren.com
Transmission Construction Quality	Team	transmissioncq@ameren.com

CC (at initial IFC submittal only):

Transmission Line Design	Jessica Timmermann	JTimmermann@ameren.com
Transmission Line Design & Standards	Tyler Huffman	THuffman@ameren.com
Transmission Line Maintenance	Jason Murphey	jmurphey@ameren.com
Vegetation Management	Josh Mahon	jmahon@ameren.com
Vegetation Management	Dieter Paries	DParies@ameren.com
Transmission Operations	Team	DLTRANSOperPIng@ameren.com
Transmission Operations	Team	TRANSTOOutCoord@ameren.com
Distribution Operations (AIC)	Team	ILDISTCTRLDR@ameren.com
Distribution Operations (AIC)	Brian Stephens	BStephens@ameren.com
Distribution Operations (AIC)	Steve Estes	SEstes@ameren.com
Distribution Operations (UEC)	Team	DTAs@ameren.com
Transmission Planning	Justin Davies	JDavies@ameren.com
Distribution Planning (UEC)	Jon Schmidt	JSCHMIDT3@ameren.com
Distribution Planning (AIC)	Matt Sensenbach	MSensenbach@ameren.com
Real Estate	Tyler Leuschke	TLeuschke@ameren.com
Environmental Services	Nancy Morgan	NMorgan@ameren.com
Digital	Team	ITNEOSpliceReviews@ameren.com
Transmission Technical Support	Team	TransAppDevGIS@ameren.com
Drafting	Katie Schwartz	KSchwartz2@ameren.com

Package Components

Include an "X" in the "[This Rev?]" column if the document has been updated for this transmittal.

I. PROJECT DESCRIPTION AND CONSTRUCTION NOTES

01.01	SPD	-	X
01.02	Spec 16O – Fiber Optic Inst, Testing, Const.	0	X
01.03	EC-22 – ROW Clearing	10	X
01.04	Exhibit 2E – Environmental Requirements	-	X
01.05	Exhibit 2F – Environmental Requirements	-	X
01.06	Exhibit 2G – Salvage-Scrap Release	-	X
01.07	Exhibit 2J – OPGW Quick Reference	-	X
01.08	Exhibit 2K – Anchor Bolt Pinging	-	X
01.09	TL-17 – Anchoring and Grounding	0	X
01.10	TL-24 – Installation of Direct Embed Strs	3	X
01.11	TL-25 – Wire Stringing and Installation	14	X
01.12	TL-36 – Demolition Work for T-Lines	2	X
01.13	TL-42 – Transmission Line Staking	0	X
01.14	WI-0298 OPGW Installation	-	X
01.15	WI-809.02 OPGW Receiving, Handling, Storage	-	X

II. PROJECT CONTACT INFORMATION

02.01	Project Contact Information	-	X
-------	-----------------------------	---	---

III. JOB DESCRIPTION, STR DATA SHEETS, & STR INFORMATION SHEETS

03.01	702043-SH 1 - Structure Data Sheets	000AB	X
03.02	702043-SH 2 - Structure Data Sheets	000AB	X
03.03	702043-SH 3 - Structure Data Sheets	000AB	X
03.04	702043-SH 4 - Structure Data Sheets	000AB	X
03.05	702043-SH 5 - Structure Data Sheets	000AB	X
03.06	702044-SH 1 – Wire Data Sheets	000AB	X

IV. VICINITY MAP

04.01	Vicinity Map – Cooper Area Connections	-	X
-------	--	---	---

V. PLAN AND PROFILE SKETCHES

05.01	P&P	000AB	X
-------	-----	-------	---

VI. PHASING & OPGW ROUTE MAP

06.01	702042 – Phasing Diagram	000AB	X
-------	--------------------------	-------	---

VII. STAKING DRAWINGS

07.01	702038 – Staking Data Details Type C1PMAH	000AB	X
07.02	702039 – Staking Data Details Type C3PHAH-DE	000AB	X
07.03	702040 – Staking Data Details Type C2PTH	000AB	X
07.04	702041 – Staking Data Details Type C3PMAH	000AB	X

VIII. STRUCTURE & ANCHOR BOLT DRAWINGS

08.01	702031-SH1 - Direct Embed Anchor, Grounding, Stabilization	000AB	X
08.02	702031-SH2 - Direct Embed Anchor, Grounding, Stabilization	000AB	X



08.03	702031-SH3 - Direct Embed Anchor, Grounding, Stabilization	000AB	X
08.04	702032-SH1 – Steel Pole Outline Type C2PTH	000AB	X
08.05	702032-SH2 – Steel Pole Outline Type C2PTH	000AB	X
08.06	702033-SH1 – Steel Pole Outline Type CPMAH	000AB	X
08.07	702033-SH2 – Steel Pole Outline Type CPMAH	000AB	X
08.08	702034-SH1 - Steel Pole Outline Type C3PMAH	000AB	X
08.09	702034-SH2 - Steel Pole Outline Type C3PMAH	000AB	X
08.10	702035-SH1 - Steel Pole Outline Type C3PHAH-DE	000AB	X
08.11	702035-SH2 - Steel Pole Outline Type C3PHAH-DE	000AB	X
08.12	702035-SH3 - Steel Pole Outline Type C3PHAH-DE	000AB	X
08.13	702036-SH1 – Steel Pole Outline Details	000AB	X
08.14	702036-SH2 – Steel Pole Outline Details	000AB	X
08.15	702036-SH3 – Steel Pole Outline Details	000AB	X
08.16	702037 – Pre-engineered Steel Pole Drilling Templates	000AB	X

IX. MANUFACTURER DRAWINGS

09.01	Manufacturer Drawings	-	X
-------	-----------------------	---	---

X. CABLE ATTACHMENTS

10.01	701984 – Assembly BB (556.5 KCM)	000AB	X
10.02	701985 – Assemblies BB & BB-6 (1192.5 KCM)	000AB	X
10.03	701991 – Assembly JJ	000AB	X
10.04	701994 – Steel Pole Hardware – Deadend (556.5 KCM)	000AB	X
10.05	701998 – Steel Pole Hardware – Deadend (1192.5 KCM)	000AB	X
10.06	702005 – Assembly W	000AB	X
10.07	702023 – Assembly C	000AB	X
10.08	702024 – Assembly P-1	000AB	X
10.09	702025 – Assemblies K & K-1	000AB	X
10.10	702026 – Assembly F	000AB	X
10.11	702027 – OPGW Splice	000AB	X
10.12	702028 – Damper and Splice Assembly Details (556.5 KCM)	000AB	X
10.13	702030 – Hardware Assembly Locations	000AB	X

XI. STRINGING CHARTS

11.01	SW Stringing Charts	-	X
11.02	Conductor Stringing Charts	-	X

XII. MATERIAL LIST

-	-	-	-
---	---	---	---

XIII. OUTAGE SEQUENCE SKETCHES

-	-	-	-
---	---	---	---

XIV. MISCELLANEOUS DRAWINGS

-	-	-	-
---	---	---	---



Project Name: Cooper Area Connections **IFB** **Revision:** 000AB
Project Engineer: Justin Wenk **Project Manager:** Sam Gardner **Date:** 01/17/2025
Line Name: Cooper-Overton-7175
Work Order: UEC11569 **MAXIMO #:** _____ **TP Number:** TP-1760
File Path: [TP-1760 Cooper BAAH > IFB > T-Line Electrical](#)

Instructions: Fill out the fields above, and select IFB or IFC. Enter the project specific contacts listed below. Enter the package document information as described in the "Package Components" section of this attachment. Complete Attachment C of TLG-30_Transmission Line Project Estimate Scoping ("Project Engineering Status Summary & Change Log"). Once complete, attach this Letter of Transmittal with TLG-30 Attachment C to the appropriate bid/construction package and submit in accordance with TL-07_Transmission Line Bid and Construction Package Transmittal.

To (at all submittals):

Project Manager	Sam Gardner	SGardner2@ameren.com
Project Controls	Sonia Navarrete	SNavarrete@ameren.com
Project Controls	Danielle Lewis	DLewis3@Ameren.com
Project Construction Supervisor	Chris Broyles	CBroyles@ameren.com
Project Line Civil Engineer (when applicable)	Jeffrey Carril	JCarril@ameren.com
Transmission Construction Quality	Chuck Twellmann	ctwellmann@ameren.com
Transmission Construction Supervision	Lance McNeel	lmcneel@ameren.com
Transmission Construction Supervision	Kirk Prenger	kprenger@ameren.com
Transmission Construction Inspection	Darren Janes	djanes@ameren.com
Transmission Construction Inspection	Ryan Connor	rconnor@ameren.com
Transmission Construction	Greg Samaniego	gsamaniego@ameren.com
Transmission Construction Quality	Team	transmissioncq@ameren.com

CC (at initial IFC submittal only):

Transmission Line Design	Jessica Timmermann	JTimmermann@ameren.com
Transmission Line Design & Standards	Tyler Huffman	THuffman@ameren.com
Transmission Line Maintenance	Jason Murphey	jmurphey@ameren.com
Vegetation Management	Josh Mahon	jmahon@ameren.com
Vegetation Management	Dieter Paries	DParies@ameren.com
Transmission Operations	Team	DLTRANSOperPIng@ameren.com
Transmission Operations	Team	TRANSTOOutCoord@ameren.com
Distribution Operations (AIC)	Team	ILDISTCTRLDR@ameren.com
Distribution Operations (AIC)	Brian Stephens	BStephens@ameren.com
Distribution Operations (AIC)	Steve Estes	SEstes@ameren.com
Distribution Operations (UEC)	Team	DTAs@ameren.com
Transmission Planning	Justin Davies	JDavies@ameren.com
Distribution Planning (UEC)	Jon Schmidt	JSCHMIDT3@ameren.com
Distribution Planning (AIC)	Matt Sensenbach	MSensenbach@ameren.com
Real Estate	Tyler Leuschke	TLeuschke@ameren.com
Environmental Services	Nancy Morgan	NMorgan@ameren.com
Digital	Team	ITNEOSpliceReviews@ameren.com
Transmission Technical Support	Team	TransAppDevGIS@ameren.com
Drafting	Katie Schwartz	KSchwartz2@ameren.com

Package Components

Include an "X" in the "[This Rev?]" column if the document has been updated for this transmittal.

I. PROJECT DESCRIPTION AND CONSTRUCTION NOTES

01.01	SPD	-	X
01.02	Spec 160 – Fiber Optic Inst, Testing, Const.	0	X
01.03	EC-22 – ROW Clearing	10	X
01.04	Exhibit 2E – Environmental Requirements	-	X
01.05	Exhibit 2F – Environmental Requirements	-	X
01.06	Exhibit 2G – Salvage-Scrap Release	-	X
01.07	Exhibit 2J – OPGW Quick Reference	-	X
01.08	Exhibit 2K – Anchor Bolt Pinging	-	X
01.09	TL-17 – Anchoring and Grounding	0	X
01.10	TL-24 – Installation of Direct Embed Strs	3	X
01.11	TL-25 – Wire Stringing and Installation	14	X
01.12	TL-36 – Demolition Work for T-Lines	2	X
01.13	TL-42 – Transmission Line Staking	0	X
01.14	WI-0298 OPGW Installation	-	X
01.15	WI-809.02 OPGW Receiving, Handling, Storage	-	X

II. PROJECT CONTACT INFORMATION

02.01	Project Contact Information	-	X
-------	-----------------------------	---	---

III. JOB DESCRIPTION, STR DATA SHEETS, & STR INFORMATION SHEETS

03.01	702229 – Structure Data Sheets	000AB	X
03.02	702239 – Wire Data Sheets	000AB	X

IV. VICINITY MAP

04.01	Vicinity Map – Cooper Area Connections	-	X
-------	--	---	---

V. PLAN AND PROFILE SKETCHES

05.01	P&P	000AB	X
-------	-----	-------	---

VI. PHASING & OPGW ROUTE MAP

06.01	702228 – Phasing Diagram	000AB	X
-------	--------------------------	-------	---

VII. STAKING DRAWINGS

07.01	702225 – Staking Data Details Type C3PMAH	000AB	X
07.02	702227 – Staking Data Details Type CPLAH-DE	000AB	X

VIII. STRUCTURE & ANCHOR BOLT DRAWINGS

08.01	702112-SH1 – Direct Embed Anchor, Grounding, Stabilization	000AB	X
08.02	702112-SH2 – Direct Embed Anchor, Grounding, Stabilization	000AB	X
08.03	702112-SH3 – Direct Embed Anchor, Grounding, Stabilization	000AB	X
08.04	702118-SH1 – Steel Pole Outline Type C3PMAH	000AB	X
08.05	702118-SH2 – Steel Pole Outline Type C3PMAH	000AB	X
08.06	702122-SH1 – Steel Pole Outline Type CPLAH-DE	000AB	X
08.07	702122-SH2 – Steel Pole Outline Type CPLAH-DE	000AB	X



08.08	702123-SH1 – Steel Pole Outline Details	000AB	X
08.09	702123-SH2 – Steel Pole Outline Details	000AB	X
08.10	702123-SH3 – Steel Pole Outline Details	000AB	X
08.11	702210-SH1 – Steel pole Grounding & Sign Mounting Details	000AB	X
08.12	702210-SH2 – Steel pole Grounding & Sign Mounting Details	000AB	X
08.13	702223 – Pre-Engineered Steel Pole Drilling Templates	000AB	X

IX. MANUFACTURER DRAWINGS

09.01	Manufacturer Drawings	-	X
-------	-----------------------	---	---

X. CABLE ATTACHMENTS

10.01	701975 – Assembly BB-6	000AB	X
10.02	701976 – Assembly J-2	000AB	X
10.03	701978 – Assembly D	000AB	X
10.04	701979 – Assembly W	000AB	X
10.05	701980 – Assembly K	000AB	X
10.06	701981 – Assembly F	000AB	X
10.07	701982 – OPGW Splice	000AB	X
10.08	702108 – Hardware Assembly Locations	000AB	X

XI. STRINGING CHARTS

11.01	SW Stringing Charts	-	X
11.02	Conductor Stringing Charts	-	X

XII. MATERIAL LIST

-	-	-	-
---	---	---	---

XIII. OUTAGE SEQUENCE SKETCHES

-	-	-	-
---	---	---	---

XIV. MISCELLANEOUS DRAWINGS

-	-	-	-
---	---	---	---



Project Name: Cooper Area Connections **IFB** **Revision:** 000AB
Project Engineer: Justin Wenk **Project Manager:** Sam Gardner **Date:** 01/17/2025
Line Name: Cooper-Overton-7285
Work Order: UEC11567 **MAXIMO #:** _____ **TP Number:** TP-1760
File Path: [TP-1760 Cooper BAAH > IFB > T-Line Electrical](#)

Instructions: Fill out the fields above, and select IFB or IFC. Enter the project specific contacts listed below. Enter the package document information as described in the "Package Components" section of this attachment. Complete Attachment C of TLG-30_Transmission Line Project Estimate Scoping ("Project Engineering Status Summary & Change Log"). Once complete, attach this Letter of Transmittal with TLG-30 Attachment C to the appropriate bid/construction package and submit in accordance with TL-07_Transmission Line Bid and Construction Package Transmittal.

To (at all submittals):

Project Manager	Sam Gardner	SGardner2@ameren.com
Project Controls	Sonia Navarrete	SNavarrete@ameren.com
Project Controls	Danielle Lewis	DLewis3@Ameren.com
Project Construction Supervisor	Chris Broyles	CBroyles@ameren.com
Project Line Civil Engineer (when applicable)	Jeffrey Carril	JCarril@ameren.com
Transmission Construction Quality	Chuck Twellmann	ctwellmann@ameren.com
Transmission Construction Supervision	Lance McNeel	lmcneel@ameren.com
Transmission Construction Supervision	Kirk Prenger	kprenger@ameren.com
Transmission Construction Inspection	Darren Janes	djanes@ameren.com
Transmission Construction Inspection	Ryan Connor	rconnor@ameren.com
Transmission Construction	Greg Samaniego	gsamaniego@ameren.com
Transmission Construction Quality	Team	transmissioncq@ameren.com

CC (at initial IFC submittal only):

Transmission Line Design	Jessica Timmermann	JTimmermann@ameren.com
Transmission Line Design & Standards	Tyler Huffman	THuffman@ameren.com
Transmission Line Maintenance	Jason Murphey	jmurphey@ameren.com
Vegetation Management	Josh Mahon	jmahon@ameren.com
Vegetation Management	Dieter Paries	DParies@ameren.com
Transmission Operations	Team	DLTRANSOperPIng@ameren.com
Transmission Operations	Team	TRANSTOOutCoord@ameren.com
Distribution Operations (AIC)	Team	ILDISTCTRLDR@ameren.com
Distribution Operations (AIC)	Brian Stephens	BStephens@ameren.com
Distribution Operations (AIC)	Steve Estes	SEstes@ameren.com
Distribution Operations (UEC)	Team	DTAs@ameren.com
Transmission Planning	Justin Davies	JDavies@ameren.com
Distribution Planning (UEC)	Jon Schmidt	JSCHMIDT3@ameren.com
Distribution Planning (AIC)	Matt Sensenbach	MSensenbach@ameren.com
Real Estate	Tyler Leuschke	TLeuschke@ameren.com
Environmental Services	Nancy Morgan	NMorgan@ameren.com
Digital	Team	ITNEOSpliceReviews@ameren.com
Transmission Technical Support	Team	TransAppDevGIS@ameren.com
Drafting	Katie Schwartz	KSchwartz2@ameren.com



Package Components

Include an "X" in the "[This Rev?]" column if the document has been updated for this transmittal.

I. PROJECT DESCRIPTION AND CONSTRUCTION NOTES

01.01	SPD	-	X
01.02	Spec 160 – Fiber Optic Inst, Testing, Const.	0	X
01.03	EC-22 – ROW Clearing	10	X
01.04	Exhibit 2E – Environmental Requirements	-	X
01.05	Exhibit 2F – Environmental Requirements	-	X
01.06	Exhibit 2G – Salvage-Scrap Release	-	X
01.07	Exhibit 2J – OPGW Quick Reference	-	X
01.08	Exhibit 2K – Anchor Bolt Pinging	-	X
01.09	TL-17 – Anchoring and Grounding	0	X
01.10	TL-24 – Installation of Direct Embed Strs	3	X
01.11	TL-25 – Wire Stringing and Installation	14	X
01.12	TL-36 – Demolition Work for T-Lines	2	X
01.13	TL-42 – Transmission Line Staking	0	X
01.14	WI-0298 OPGW Installation	-	X
01.15	WI-809.02 OPGW Receiving, Handling, Storage	-	X

II. PROJECT CONTACT INFORMATION

02.01	Project Contact Information	-	X
-------	-----------------------------	---	---

III. JOB DESCRIPTION, STR DATA SHEETS, & STR INFORMATION SHEETS

03.01	701673 – Structure Data Sheets	000AB	X
03.02	701674 – Wire Data Sheets	000AB	X

IV. VICINITY MAP

04.01	Vicinity Map – Cooper Area Connections	-	X
-------	--	---	---

V. PLAN AND PROFILE SKETCHES

05.01	P&P	000AB	X
-------	-----	-------	---

VI. PHASING & OPGW ROUTE MAP

06.01	701671 – Phasing Diagram	000AB	X
-------	--------------------------	-------	---

VII. STAKING DRAWINGS

07.01	701667 – Staking Data Details Type C2PTH	000AB	X
07.02	701670 – Staking Data Details Type C3PHAH-DE	000AB	X

VIII. STRUCTURE & ANCHOR BOLT DRAWINGS

08.01	701632-SH1 – Direct Embed Anchor, Grounding, Stabilization	000AB	X
08.02	701632-SH2 – Direct Embed Anchor, Grounding, Stabilization	000AB	X
08.03	701632-SH3 – Direct Embed Anchor, Grounding, Stabilization	000AB	X
08.04	701633-SH1 – Steel Pole Outline Type C2PTH	000AB	X
08.05	701633-SH2 – Steel Pole Outline Type C2PTH	000AB	X
08.06	701634-SH1 – Steel Pole Outline Type C3PHAH-DE	000AB	X



08.07	701634-SH2 – Steel Pole Outline Type C3PHAH-DE	000AB	X
08.08	701634-SH3 – Steel Pole Outline Type C3PHAH-DE	000AB	X
08.09	701636-SH1 – Steel Pole Outline Details	000AB	X
08.10	701636-SH2 – Steel Pole Outline Details	000AB	X
08.11	701636-SH3 – Steel Pole Outline Details	000AB	X
08.12	701644 – Pre-Engineered Steel Pole Drilling Templates	000AB	X

IX. MANUFACTURER DRAWINGS

09.01	Manufacturer Drawings	-	X
-------	-----------------------	---	---

X. CABLE ATTACHMENTS

10.01	701614 – Assembly BB	000AB	X
10.02	701615 – Assembly JJ	000AB	X
10.03	701616 – Assembly DD	000AB	X
10.04	701617 – Assembly W	000AB	X
10.05	701618 – Assembly K	000AB	X
10.06	701619 – Assembly F	000AB	X
10.07	701620 – OPGW Splice	000AB	X
10.08	701622 – Hardware Assembly Locations	000AB	X

XI. STRINGING CHARTS

11.01	SW Stringing Charts	-	X
11.02	Conductor Stringing Charts	-	X

XII. MATERIAL LIST

-	-	-	-
---	---	---	---

XIII. OUTAGE SEQUENCE SKETCHES

-	-	-	-
---	---	---	---

XIV. MISCELLANEOUS DRAWINGS

-	-	-	-
---	---	---	---



Project Name: Cooper Area Connections **IFB** **Revision:** 000AB
Project Engineer: Justin Wenk **Project Manager:** Sam Gardner **Date:** 01/17/2025
Line Name: Cooper-Sedalia East-1619
Work Order: UEC10932 **MAXIMO #:** _____ **TP Number:** TP-1760
File Path: [TP-1760 Cooper BAAH > IFB > T-Line Electrical](#)

Instructions: Fill out the fields above, and select IFB or IFC. Enter the project specific contacts listed below. Enter the package document information as described in the "Package Components" section of this attachment. Complete Attachment C of TLG-30_Transmission Line Project Estimate Scoping ("Project Engineering Status Summary & Change Log"). Once complete, attach this Letter of Transmittal with TLG-30 Attachment C to the appropriate bid/construction package and submit in accordance with TL-07_Transmission Line Bid and Construction Package Transmittal.

To (at all submittals):

Project Manager	Sam Gardner	SGardner2@ameren.com
Project Controls	Sonia Navarrete	SNavarrete@ameren.com
Project Controls	Danielle Lewis	DLewis3@Ameren.com
Project Construction Supervisor	Chris Broyles	CBroyles@ameren.com
Project Line Civil Engineer (when applicable)	Jeffrey Carrill	JCarril@ameren.com
Transmission Construction Quality	Chuck Twellmann	ctwellmann@ameren.com
Transmission Construction Supervision	Lance McNeel	lmcneel@ameren.com
Transmission Construction Supervision	Kirk Prenger	kprenger@ameren.com
Transmission Construction Inspection	Darren Janes	djanes@ameren.com
Transmission Construction Inspection	Ryan Connor	rconnor@ameren.com
Transmission Construction	Greg Samaniego	gsamaniego@ameren.com
Transmission Construction Quality	Team	transmissioncq@ameren.com

CC (at initial IFC submittal only):

Transmission Line Design	Jessica Timmermann	JTimmermann@ameren.com
Transmission Line Design & Standards	Tyler Huffman	THuffman@ameren.com
Transmission Line Maintenance	Jason Murphey	jmurphey@ameren.com
Vegetation Management	Josh Mahon	jmahon@ameren.com
Vegetation Management	Dieter Paries	DParies@ameren.com
Transmission Operations	Team	DLTRANSOperPIng@ameren.com
Transmission Operations	Team	TRANSTOOutCoord@ameren.com
Distribution Operations (AIC)	Team	ILDISTCTRLDR@ameren.com
Distribution Operations (AIC)	Brian Stephens	BStephens@ameren.com
Distribution Operations (AIC)	Steve Estes	SEstes@ameren.com
Distribution Operations (UEC)	Team	DTAs@ameren.com
Transmission Planning	Justin Davies	JDavies@ameren.com
Distribution Planning (UEC)	Jon Schmidt	JSCHMIDT3@ameren.com
Distribution Planning (AIC)	Matt Sensenbach	MSensenbach@ameren.com
Real Estate	Tyler Leuschke	TLeuschke@ameren.com
Environmental Services	Nancy Morgan	NMorgan@ameren.com
Digital	Team	ITNEOSpliceReviews@ameren.com
Transmission Technical Support	Team	TransAppDevGIS@ameren.com
Drafting	Katie Schwartz	KSchwartz2@ameren.com

Package Components

Include an "X" in the "[This Rev?]" column if the document has been updated for this transmittal.

I. PROJECT DESCRIPTION AND CONSTRUCTION NOTES

01.01	SPD	-	X
01.02	Spec 16O – Fiber Optic Inst, Testing, Const.	0	X
01.03	EC-22 – ROW Clearing	10	X
01.04	Exhibit 2E – Environmental Requirements	-	X
01.05	Exhibit 2F – Environmental Requirements	-	X
01.06	Exhibit 2G – Salvage-Scrap Release	-	X
01.07	Exhibit 2J – OPGW Quick Reference	-	X
01.08	Exhibit 2K – Anchor Bolt Pinging	-	X
01.09	TL-17 – Anchoring and Grounding	0	X
01.10	TL-24 – Installation of Direct Embed Strs	3	X
01.11	TL-25 – Wire Stringing and Installation	14	X
01.12	TL-36 – Demolition Work for T-Lines	2	X
01.13	TL-42 – Transmission Line Staking	0	X
01.14	WI-0298 OPGW Installation	-	X
01.15	WI-809.02 OPGW Receiving, Handling, Storage	-	X

II. PROJECT CONTACT INFORMATION

02.01	Project Contact Information	-	X
-------	-----------------------------	---	---

III. JOB DESCRIPTION, STR DATA SHEETS, & STR INFORMATION SHEETS

03.01	703987-SH1 - Structure Data Sheets	000AC	X
03.02	703987-SH2 - Structure Data Sheets	000AC	X
03.03	703987-SH3 - Structure Data Sheets	000AC	X
03.04	703988 - Wire Data Sheet	000AC	X

IV. VICINITY MAP

04.01	Vicinity Map – Cooper Area Connections	-	X
-------	--	---	---

V. PLAN AND PROFILE SKETCHES

05.01	P&P	000AB	X
-------	-----	-------	---

VI. PHASING & OPGW ROUTE MAP

06.01	703986 – Phasing Diagram	000AC	X
-------	--------------------------	-------	---

VII. STAKING DRAWINGS

07.01	703979 – Staking Data Details Type C3PHAH	000AB	X
-------	---	-------	---

VIII. STRUCTURE & ANCHOR BOLT DRAWINGS

08.01	703968-SH1 – Direct Embed Anchor, Grounding, Stabilization	000AC	X
08.02	703968-SH2 – Direct Embed Anchor, Grounding, Stabilization	000AC	X
08.03	703968-SH3 – Direct Embed Anchor, Grounding, Stabilization	000AC	X
08.04	703973-SH1 – Steel Pole Outline Details	000AC	X
08.05	703973-SH2 – Steel Pole Outline Details	000AC	X
08.06	703976-SH1 – Steel Pole Outline Type C3PHAH	000AB	X



08.07	703976-SH2 – Steel Pole Outline Type C3PHAH	000AB	X
08.08	703977 – Pre-Engineered Steel Pole Drilling Templates	000AB	X

IX. MANUFACTURER DRAWINGS

09.01	Manufacturer Drawings	-	X
-------	-----------------------	---	---

X. CABLE ATTACHMENTS

10.01	703958 – Assembly BB-6	000AB	X
10.02	703960 – Assembly W	000AB	X
10.03	703961 – Assembly D (795 KCM)	000AC	X
10.04	703963 – Assemblies P & P-1	000AC	X
10.05	703964 – Assembly K-1	000AB	X
10.06	703965 – OPGW Splicing Details	000AB	X
10.07	703967 – Hardware Assembly Location Drawing	000AC	X
10.08	703972 – Assembly F	000AB	X
10.09	703984 – Assembly D (1192.5 KCM)	000AB	X
10.10	703985 – Assembly J-2 (1192.5 KCM)	000AB	X

XI. STRINGING CHARTS

11.01	SW Stringing Charts	-	X
11.02	Conductor Stringing Charts	-	X

XII. MATERIAL LIST

-	-	-	-
---	---	---	---

XIII. OUTAGE SEQUENCE SKETCHES

-	-	-	-
---	---	---	---

XIV. MISCELLANEOUS DRAWINGS

-	-	-	-
---	---	---	---



Project Name: Cooper Area Connections **IFB** **Revision:** 000AB
Project Engineer: Justin Wenk **Project Manager:** Sam Gardner **Date:** 01/17/2025
Line Name: Loy Martin-Cooper-7148
Work Order: UEC10932 **MAXIMO #:** _____ **TP Number:** TP-1760
File Path: [TP-1760 Cooper BAAH > IFB > T-Line Electrical](#)

Instructions: Fill out the fields above, and select IFB or IFC. Enter the project specific contacts listed below. Enter the package document information as described in the "Package Components" section of this attachment. Complete Attachment C of TLG-30_Transmission Line Project Estimate Scoping ("Project Engineering Status Summary & Change Log"). Once complete, attach this Letter of Transmittal with TLG-30 Attachment C to the appropriate bid/construction package and submit in accordance with TL-07_Transmission Line Bid and Construction Package Transmittal.

To (at all submittals):

Project Manager	Sam Gardner	SGardner2@ameren.com
Project Controls	Sonia Navarrete	SNavarrete@ameren.com
Project Controls	Danielle Lewis	DLewis3@Ameren.com
Project Construction Supervisor	Chris Broyles	CBroyles@ameren.com
Project Line Civil Engineer (when applicable)	Jeffrey Carril	JCarril@ameren.com
Transmission Construction Quality	Chuck Twellmann	ctwellmann@ameren.com
Transmission Construction Supervision	Lance McNeel	lmcneel@ameren.com
Transmission Construction Supervision	Kirk Prenger	kprenger@ameren.com
Transmission Construction Inspection	Darren Janes	djanes@ameren.com
Transmission Construction Inspection	Ryan Connor	rconnor@ameren.com
Transmission Construction	Greg Samaniego	gsamaniego@ameren.com
Transmission Construction Quality	Team	transmissioncq@ameren.com

CC (at initial IFC submittal only):

Transmission Line Design	Jessica Timmermann	JTimmermann@ameren.com
Transmission Line Design & Standards	Tyler Huffman	THuffman@ameren.com
Transmission Line Maintenance	Jason Murphey	jmurphey@ameren.com
Vegetation Management	Josh Mahon	jmahon@ameren.com
Vegetation Management	Dieter Paries	DParies@ameren.com
Transmission Operations	Team	DLTRANSOperPIng@ameren.com
Transmission Operations	Team	TRANSTOOutCoord@ameren.com
Distribution Operations (AIC)	Team	ILDISTCTRLDR@ameren.com
Distribution Operations (AIC)	Brian Stephens	BStephens@ameren.com
Distribution Operations (AIC)	Steve Estes	SEstes@ameren.com
Distribution Operations (UEC)	Team	DTAs@ameren.com
Transmission Planning	Justin Davies	JDavies@ameren.com
Distribution Planning (UEC)	Jon Schmidt	JSCHMIDT3@ameren.com
Distribution Planning (AIC)	Matt Sensenbach	MSensenbach@ameren.com
Real Estate	Tyler Leuschke	TLeuschke@ameren.com
Environmental Services	Nancy Morgan	NMorgan@ameren.com
Digital	Team	ITNEOSpliceReviews@ameren.com
Transmission Technical Support	Team	TransAppDevGIS@ameren.com
Drafting	Katie Schwartz	KSchwartz2@ameren.com



Package Components

Include an "X" in the "[This Rev?]" column if the document has been updated for this transmittal.

I. PROJECT DESCRIPTION AND CONSTRUCTION NOTES

01.01	SPD	-	X
01.02	Spec 160 – Fiber Optic Inst, Testing, Const.	0	X
01.03	EC-22 – ROW Clearing	10	X
01.04	Exhibit 2E – Environmental Requirements	-	X
01.05	Exhibit 2F – Environmental Requirements	-	X
01.06	Exhibit 2G – Salvage-Scrap Release	-	X
01.07	Exhibit 2J – OPGW Quick Reference	-	X
01.08	Exhibit 2K – Anchor Bolt Pinging	-	X
01.09	TL-17 – Anchoring and Grounding	0	X
01.10	TL-24 – Installation of Direct Embed Strs	3	X
01.11	TL-25 – Wire Stringing and Installation	14	X
01.12	TL-36 – Demolition Work for T-Lines	2	X
01.13	TL-42 – Transmission Line Staking	0	X
01.14	WI-0298 OPGW Installation	-	X
01.15	WI-809.02 OPGW Receiving, Handling, Storage	-	X

II. PROJECT CONTACT INFORMATION

02.01	Project Contact Information	-	X
-------	-----------------------------	---	---

III. JOB DESCRIPTION, STR DATA SHEETS, & STR INFORMATION SHEETS

03.01	701238-SH 1 - Structure Data Sheets	000AB	X
03.02	701238-SH 2 - Structure Data Sheets	000AB	X
03.03	701238-SH 3 - Structure Data Sheets	000AB	X
03.04	701312-SH 1 – Wire Data Sheets	000AB	X
03.05	701312-SH 2 – Wire Data Sheets	000AB	X

IV. VICINITY MAP

04.01	Vicinity Map – Cooper Area Connections	-	X
-------	--	---	---

V. PLAN AND PROFILE SKETCHES

05.01	P&P	000AB	X
-------	-----	-------	---

VI. PHASING & OPGW ROUTE MAP

06.01	701233 – Phasing Diagram	000AB	X
-------	--------------------------	-------	---

VII. STAKING DRAWINGS

07.01	701228 – Staking Data Details Type C3PHAH-DE	000AB	X
07.02	701229 – Staking Data Details Type C3PMAH	000AB	X

VIII. STRUCTURE & ANCHOR BOLT DRAWINGS

08.01	701077-SH1 – Direct Embed Anchor, Grounding, Stabilization	000AB	X
08.02	701077-SH2 – Direct Embed Anchor, Grounding, Stabilization	000AB	X
08.03	701077-SH3 – Direct Embed Anchor, Grounding, Stabilization	000AB	X
08.04	701084-SH1 – Steel Pole Outline Type C3PMAH	000AB	X



08.05	701084-SH2 – Steel Pole Outline Type C3PMAH	000AB	X
08.06	701092-SH1 – Steel Pole Outline Type C3PMAH	000AB	X
08.07	701092-SH2 – Steel Pole Outline Type C3PMAH	000AB	X
08.08	701092-SH3 – Steel Pole Outline Type C3PMAH	000AB	X
08.09	701094-SH1 – Steel Pole Outline Details	000AB	X
08.10	701094-SH2 – Steel Pole Outline Details	000AB	X
08.11	701094-SH3 – Steel Pole Outline Details	000AB	X
08.12	701227 – Steel Pole Drilling Templates	000AB	X

IX. MANUFACTURER DRAWINGS

09.01	Manufacturer Drawings	-	X
-------	-----------------------	---	---

X. CABLE ATTACHMENTS

10.01	701052 – Assemblies BB & BB-5 (1192.5 KCM)	000AB	X
10.02	701053 – Assembly JJ	000AB	X
10.03	701054 – Assembly DD (795 KCM)	000AB	X
10.04	701055 – Assembly DD (1192.5 KCM)	000AB	X
10.05	701056 – Assembly W	000AB	X
10.06	701057 – Assembly P-1	000AB	X
10.07	701058 – Assembly K (DNO-11706)	000AB	X
10.08	701060 – OPGW Splice	000AB	X
10.09	701061 – Assembly F	000AB	X
10.10	701062 – Damper and Splice Assembly Details (795 KCM)	000AB	X
10.11	701063 – Damper and Splice Assembly Details (1192.5 KCM)	000AB	X
10.12	701064 – Hardware Assembly Locations	000AB	X

XI. STRINGING CHARTS

11.01	SW Stringing Charts	-	X
11.02	Conductor Stringing Charts	-	X

XII. MATERIAL LIST

-	-	-	-
---	---	---	---

XIII. OUTAGE SEQUENCE SKETCHES

-	-	-	-
---	---	---	---

XIV. MISCELLANEOUS DRAWINGS

-	-	-	-
---	---	---	---



Project Name: Cooper Area Connections **IFB** **Revision:** 000AB
Project Engineer: Justin Wenk **Project Manager:** Sam Gardner **Date:** 01/17/2025
Line Name: Overton-Cooper-7355
Work Order: UEC10932 **MAXIMO #:** **TP Number:** TP-1760
File Path: [TP-1760 Cooper BAAH > IFB > T-Line Electrical](#)

Instructions: Fill out the fields above, and select IFB or IFC. Enter the project specific contacts listed below. Enter the package document information as described in the "Package Components" section of this attachment. Complete Attachment C of TLG-30_Transmission Line Project Estimate Scoping ("Project Engineering Status Summary & Change Log"). Once complete, attach this Letter of Transmittal with TLG-30 Attachment C to the appropriate bid/construction package and submit in accordance with TL-07_Transmission Line Bid and Construction Package Transmittal.

To (at all submittals):

Project Manager	Sam Gardner	SGardner2@ameren.com
Project Controls	Sonia Navarrete	SNavarrete@ameren.com
Project Controls	Danielle Lewis	DLewis3@Ameren.com
Project Construction Supervisor	Chris Broyles	CBroyles@ameren.com
Project Line Civil Engineer (when applicable)	Jeffrey Carril	JCarril@ameren.com
Transmission Construction Quality	Chuck Twellmann	ctwellmann@ameren.com
Transmission Construction Supervision	Lance McNeel	lmcneel@ameren.com
Transmission Construction Supervision	Kirk Prenger	kprenger@ameren.com
Transmission Construction Inspection	Darren Janes	djanes@ameren.com
Transmission Construction Inspection	Ryan Connor	rconnor@ameren.com
Transmission Construction	Greg Samaniego	gsamaniego@ameren.com
Transmission Construction Quality	Team	transmissioncq@ameren.com

CC (at initial IFC submittal only):

Transmission Line Design	Jessica Timmermann	JTimmermann@ameren.com
Transmission Line Design & Standards	Tyler Huffman	THuffman@ameren.com
Transmission Line Maintenance	Jason Murphey	jmurphey@ameren.com
Vegetation Management	Josh Mahon	jmahon@ameren.com
Vegetation Management	Dieter Paries	DParies@ameren.com
Transmission Operations	Team	DLTRANSOperPIng@ameren.com
Transmission Operations	Team	TRANSTOOutCoord@ameren.com
Distribution Operations (AIC)	Team	ILDISTCTRLDR@ameren.com
Distribution Operations (AIC)	Brian Stephens	BStephens@ameren.com
Distribution Operations (AIC)	Steve Estes	SEstes@ameren.com
Distribution Operations (UEC)	Team	DTAs@ameren.com
Transmission Planning	Justin Davies	JDavies@ameren.com
Distribution Planning (UEC)	Jon Schmidt	JSCHMIDT3@ameren.com
Distribution Planning (AIC)	Matt Sensenbach	MSensenbach@ameren.com
Real Estate	Tyler Leuschke	TLeuschke@ameren.com
Environmental Services	Nancy Morgan	NMorgan@ameren.com
Digital	Team	ITNEOSpliceReviews@ameren.com
Transmission Technical Support	Team	TransAppDevGIS@ameren.com
Drafting	Katie Schwartz	KSchwartz2@ameren.com

Package Components

Include an "X" in the "[This Rev?]" column if the document has been updated for this transmittal.

I. PROJECT DESCRIPTION AND CONSTRUCTION NOTES

01.01	SPD	-	X
01.02	Spec 160 – Fiber Optic Inst, Testing, Const.	0	X
01.03	EC-22 – ROW Clearing	10	X
01.04	Exhibit 2E – Environmental Requirements	-	X
01.05	Exhibit 2F – Environmental Requirements	-	X
01.06	Exhibit 2G – Salvage-Scrap Release	-	X
01.07	Exhibit 2J – OPGW Quick Reference	-	X
01.08	Exhibit 2K – Anchor Bolt Pinging	-	X
01.09	TL-17 – Anchoring and Grounding	0	X
01.10	TL-24 – Installation of Direct Embed Strs	3	X
01.11	TL-25 – Wire Stringing and Installation	14	X
01.12	TL-36 – Demolition Work for T-Lines	2	X
01.13	TL-42 – Transmission Line Staking	0	X
01.14	WI-0298 OPGW Installation	-	X
01.15	WI-809.02 OPGW Receiving, Handling, Storage	-	X

II. PROJECT CONTACT INFORMATION

02.01	Project Contact Information	-	X
-------	-----------------------------	---	---

III. JOB DESCRIPTION, STR DATA SHEETS, & STR INFORMATION SHEETS

03.01	701227 - Structure Data Sheet	000AB	X
03.02	701228 - Wire Data Sheet	000AB	X

IV. VICINITY MAP

04.01	Vicinity Map – Cooper Area Connections	-	X
-------	--	---	---

V. PLAN AND PROFILE SKETCHES

05.01	P&P	000AB	X
-------	-----	-------	---

VI. PHASING & OPGW ROUTE MAP

06.01	701094 – Phasing Diagram	000AB	X
-------	--------------------------	-------	---

VII. STAKING DRAWINGS

07.01	701092 – Staking Data Details Type CPHAD-DE RT/LT	000AB	X
-------	---	-------	---

VIII. STRUCTURE & ANCHOR BOLT DRAWINGS

08.01	701060 – Steel Pole Outline Details	000AB	X
08.02	701061-SH 1 – Steel Pole Outline Type CPHAD-DE RT/LT	000AB	X
08.03	701061-SH 2 – Steel Pole Outline Type CPHAD-DE RT/LT	000AB	X
08.04	701084-SH 1– Steel Pole Grounding and Sign Mounting Details	000AB	X
08.05	701084-SH 2– Steel Pole Grounding and Sign Mounting Details	000AB	X



IX. MANUFACTURER DRAWINGS

09.01	Manufacturer Drawings	-	X
-------	-----------------------	---	---

X. CABLE ATTACHMENTS

10.01	701052 – Assembly B-1	000AB	X
10.02	701053 - Assembly T-3	000AB	X
10.03	701054 - Assembly W-5	000AB	X
10.04	701056 – Assembly F	000AB	X
10.05	701057 – OPGW Splice	000AB	X
10.06	701059 – Hardware Assembly Locations	000AB	X

XI. STRINGING CHARTS

11.01	SW Stringing Charts	-	X
11.02	Conductor Stringing Charts	-	X

XII. MATERIAL LIST

-	-	-	-
---	---	---	---

XIII. OUTAGE SEQUENCE SKETCHES

-	-	-	-
---	---	---	---

XIV. MISCELLANEOUS DRAWINGS

-	-	-	-
---	---	---	---



Project Name: Cooper Area Connections **IFB** **Revision:** 000AB
Project Engineer: Justin Wenk **Project Manager:** Sam Gardner **Date:** 01/17/2025
Line Name: Overton-Cooper-7465
Work Order: UEC10932 **MAXIMO #:** _____ **TP Number:** TP-1760
File Path: [TP-1760 Cooper BAAH > IFB > T-Line Electrical](#)

Instructions: Fill out the fields above, and select IFB or IFC. Enter the project specific contacts listed below. Enter the package document information as described in the "Package Components" section of this attachment. Complete Attachment C of TLG-30_Transmission Line Project Estimate Scoping ("Project Engineering Status Summary & Change Log"). Once complete, attach this Letter of Transmittal with TLG-30 Attachment C to the appropriate bid/construction package and submit in accordance with TL-07_Transmission Line Bid and Construction Package Transmittal.

To (at all submittals):

Project Manager	Sam Gardner	SGardner2@ameren.com
Project Controls	Sonia Navarrete	SNavarrete@ameren.com
Project Controls	Danielle Lewis	DLewis3@Ameren.com
Project Construction Supervisor	Chris Broyles	CBroyles@ameren.com
Project Line Civil Engineer (when applicable)	Jeffrey Carril	JCarril@ameren.com
Transmission Construction Quality	Chuck Twellmann	ctwellmann@ameren.com
Transmission Construction Supervision	Lance McNeel	lmcneel@ameren.com
Transmission Construction Supervision	Kirk Prenger	kprenger@ameren.com
Transmission Construction Inspection	Darren Janes	djanes@ameren.com
Transmission Construction Inspection	Ryan Connor	rconnor@ameren.com
Transmission Construction	Greg Samaniego	gsamaniego@ameren.com
Transmission Construction Quality	Team	transmissioncq@ameren.com

CC (at initial IFC submittal only):

Transmission Line Design	Jessica Timmermann	JTimmermann@ameren.com
Transmission Line Design & Standards	Tyler Huffman	THuffman@ameren.com
Transmission Line Maintenance	Jason Murphey	jmurphey@ameren.com
Vegetation Management	Josh Mahon	jmahon@ameren.com
Vegetation Management	Dieter Paries	DParies@ameren.com
Transmission Operations	Team	DLTRANSOperPIng@ameren.com
Transmission Operations	Team	TRANSTOOutCoord@ameren.com
Distribution Operations (AIC)	Team	ILDISTCTRLDR@ameren.com
Distribution Operations (AIC)	Brian Stephens	BStephens@ameren.com
Distribution Operations (AIC)	Steve Estes	SEstes@ameren.com
Distribution Operations (UEC)	Team	DTAs@ameren.com
Transmission Planning	Justin Davies	JDavies@ameren.com
Distribution Planning (UEC)	Jon Schmidt	JSCHMIDT3@ameren.com
Distribution Planning (AIC)	Matt Sensenbach	MSensenbach@ameren.com
Real Estate	Tyler Leuschke	TLeuschke@ameren.com
Environmental Services	Nancy Morgan	NMorgan@ameren.com
Digital	Team	ITNEOSpliceReviews@ameren.com
Transmission Technical Support	Team	TransAppDevGIS@ameren.com
Drafting	Katie Schwartz	KSchwartz2@ameren.com

Package Components

Include an "X" in the "[This Rev?]" column if the document has been updated for this transmittal.

I. PROJECT DESCRIPTION AND CONSTRUCTION NOTES

01.01	SPD	-	X
01.02	Spec 160 – Fiber Optic Inst, Testing, Const.	0	X
01.03	EC-22 – ROW Clearing	10	X
01.04	Exhibit 2E – Environmental Requirements	-	X
01.05	Exhibit 2F – Environmental Requirements	-	X
01.06	Exhibit 2G – Salvage-Scrap Release	-	X
01.07	Exhibit 2J – OPGW Quick Reference	-	X
01.08	Exhibit 2K – Anchor Bolt Pinging	-	X
01.09	TL-17 – Anchoring and Grounding	0	X
01.10	TL-24 – Installation of Direct Embed Strs	3	X
01.11	TL-25 – Wire Stringing and Installation	14	X
01.12	TL-36 – Demolition Work for T-Lines	2	X
01.13	TL-42 – Transmission Line Staking	0	X
01.14	WI-0298 OPGW Installation	-	X
01.15	WI-809.02 OPGW Receiving, Handling, Storage	-	X

II. PROJECT CONTACT INFORMATION

02.01	Project Contact Information	-	X
-------	-----------------------------	---	---

III. JOB DESCRIPTION, STR DATA SHEETS, & STR INFORMATION SHEETS

03.01	704174 - Structure Data Sheets	000AB	X
03.02	704175 - Wire Data Sheets	000AB	X

IV. VICINITY MAP

04.01	Vicinity Map – Cooper Area Connections	-	X
-------	--	---	---

V. PLAN AND PROFILE SKETCHES

05.01	P&P	000AB	X
-------	-----	-------	---

VI. PHASING & OPGW ROUTE MAP

06.01	704173 – Phasing Diagram	000AB	X
-------	--------------------------	-------	---

VII. STAKING DRAWINGS

07.01	704172 – Staking Data Details Type DC-EPHAV-DE	000AB	X
-------	--	-------	---

VIII. STRUCTURE & ANCHOR BOLT DRAWINGS

08.01	704166-SH1 - Steel Pole Outline Details	000AB	X
08.02	704167-SH1 – Steel Pole Outline Type DC-EPHAV-DE-LT/RT	000AB	X
08.03	704167-SH2 – Steel Pole Outline Type DC-EPHAV-DE-LT/RT	000AB	X
08.04	704171-SH1 – Steel Pole Grounding & Sign Mounting Details	000AB	X
08.05	704171-SH2 – Steel Pole Grounding & Sign Mounting Details	000AB	X

IX. MANUFACTURER DRAWINGS



09.01	Manufacturer Drawings	-	X
-------	-----------------------	---	---

X. CABLE ATTACHMENTS

10.01	704158 – Assembly B-1	000AB	X
10.02	704159 – Assemblies T-3 & T-5	000AB	X
10.03	704160 – Assembly W-5	000AB	X
10.04	704162 – Assembly F	000AB	X
10.05	704163 – OPGW Splice	000AB	X
10.06	704165 – Hardware Assembly Locations	000AB	X
10.07	704176 – Assemblies P & P-1	000AB	X

XI. STRINGING CHARTS

11.01	SW Stringing Charts	-	X
11.02	Conductor Stringing Charts	-	X

XII. MATERIAL LIST

-	-	-	-
---	---	---	---

XIII. OUTAGE SEQUENCE SKETCHES

-	-	-	-
---	---	---	---

XIV. MISCELLANEOUS DRAWINGS

-	-	-	-
---	---	---	---

Page 23 of 60 is confidential in
its entirety.

P

Page 24 of 60 is confidential in
its entirety.

P

Page 25 of 60 is confidential in
its entirety.

P

SITE NAME:
COOPER SUBSTATION
 JOB DESCRIPTION:
161KV GREENFIELD SUBSTATION (9 POSITION)

PROJECT ENG:
WS
 RELAY/CIVIL ENG:
AS/WG

WO#UEC11315
 Designer/Drafter
 MA/ANP
 IFC Date: 01/01/0001

Reissue Date	Drawing	Rev.	Title	Removal/ Void	Subclass Code	Field Marked Print (Y/N)	RFI/NCR Number	Notes/Comments
	COOP-C-000001-001	000A0	FOUNDATION PLAN 161KV SUBSTATION		1100			
	COOP-E-000002-001	000A0	ONE LINE DIAGRAM MAXIMUM EQUIPMENT RATING		5104			
	COOP-Q-000001-001	000A0	EQUIPMENT ARRANGEMENT PLAN 161KV SUBSTATION		2100			
	COOP-Q-000002-001	000A0	EQUIPMENT ASSEMBLY SECTION 'A-A' 161KV BAAH		2100			
	COOP-Q-000003-001	000A0	EQUIPMENT ASSEMBLY SECTION 'B-B' 161KV BAAH		2100			
	COOP-Q-000004-001	000A0	EQUIPMENT ASSEMBLY SECTION 'C-C' 161KV BAAH		2100			
	COOP-Q-000005-001	000A0	EQUIPMENT ASSEMBLY SECTION 'D-D' 161KV BAAH		2100			
	COOP-Q-000006-001	000A0	EQUIPMENT ASSEMBLY SECTION 'E-E' 161KV BAAH		2100			
	COOP-Q-000007-001	000A0	EQUIPMENT ASSEMBLY SECTION 'F-F' 161KV BAAH		2100			
	COOP-Q-000008-001	000A0	EQUIPMENT ASSEMBLY SECTION 'G-G' 161KV BAAH		2100			
	COOP-Q-000009-001	000A0	EQUIPMENT ASSEMBLY SECTION 'H-H' 161KV BAAH		2100			
	COOP-Q-000010-001	000A0	EQUIPMENT ASSEMBLY SECTION 'J-J' 161KV BAAH		2100			
	COOP-Q-000011-001	000A0	EQUIPMENT ASSEMBLY SECTION 'K-K', 'L-L', 'M-M' & 'N-N' 161KV BAAH		2100			
	COOP-Q-000016-001	000A0	161KV EQUIPMENT DETAILS JUMPER ASSEMBLIES		1200			
	COOP-Q-000017-001	000A0	CONDUIT PLAN 161KV SUBSATION		1300			
	COOP-Q-000017-002	000A0	CONDUIT PLAN 161KV SUBSATION		1300			
	COOP-Q-000017-003	000A0	CONDUIT PLAN 161KV SUBSATION		1300			
	COOP-Q-000018-001	000A0	CONDUIT DETAILS 161KV SUBSATION		1300			
	COOP-Q-000018-002	000A0	CONDUIT DETAILS 161KV SUBSATION		1300			
	COOP-Q-000018-003	000A0	CONDUIT DETAILS 161KV SUBSATION		1300			
	COOP-Q-000018-004	000A0	CONDUIT DETAILS 161KV SUBSATION		1300			
	COOP-Q-000018-005	000A0	CONDUIT DETAILS 161KV SUBSATION		1300			
	COOP-Q-000019-001	000A0	GROUNDING PLAN 161KV BAAH		1200			
	COOP-Q-000020-001	000A0	GROUNDING DETAILS 350 MCM CU. 161KV SUBSTATION		1200			
	COOP-Q-000020-002	000A0	GROUNDING DETAILS 350 MCM CU. 161KV SUBSTATION		1200			
	COOP-Q-000020-003	000A0	GROUNDING DETAILS 350 MCM CU. 161KV SUBSTATION		1200			
	COOP-Q-000021-001	000A0	EQUIPMENT JUNCTION BOX DETAIL 161KV SUBSATION		1300			
	COOP-Q-000022-001	000A0	LIGHTING LAYOUT 161KV SUBSATION		2400			
	COOP-S-000001-001	000A0	STRUCTURE STEEL FRAMING AND DETAILS DEAD END H FRAME STRUCTURE C103, A213 SHEET 1 OF 2		2200			
	COOP-S-000001-002	000A0	STRUCTURE STEEL FRAMING AND DETAILS DEAD END H FRAME STRUCTURE C103, A213 SHEET 2 OF 2		2200			
	COOP-S-000002-001	000A0	STRUCTURE STEEL FRAMING AND DETAILS EXTENSION-DEAD END H FRAME STRUCTURE C104, A214 SHEET 1 OF 2		2200			
	COOP-S-000002-002	000A0	STRUCTURE STEEL FRAMING AND DETAILS EXTENSION-DEAD END H FRAME STRUCTURE C104, A214 SHEET 2 OF 2		2200			
	COOP-S-000003-001	000A0	STRUCTURE STEEL FRAMING AND DETAILS 161KV LOW SWITCH STAND STRUCTURE C211, A221		2200			
	COOP-S-000004-001	000A0	STRUCTURE STEEL FRAMING AND DETAILS 161KV 3 PHASE LOW BUS SUPPORT STRUCTURE C313 (A233)		2200			
	COOP-S-000005-001	000A0	STRUCTURE STEEL FRAMING AND DETAILS 161KV 3 PHASE HIGH BUS SUPPORT STRUCTURE C314 (A234)		2200			
	COOP-S-000006-001	000A0	STRUCTURE STEEL FRAMING AND DETAILS 161KV PT SUPPORT STRUCTURE C411 (A241)		2200			
	COOP-S-000007-001	000A0	STRUCTURE STEEL FRAMING AND DETAILS 161KV 3-PHASE CCVT SUPPORT STRUCTURE C408 (A248)		2200			
	COOP-S-000008-001	000A0	STRUCTURE STEEL FRAMING AND DETAILS 138KV INSULATOR MOUNTING STRUCTURE C802		2200			
	COOP-S-000009-001	000A0	STRUCTURE STEEL FRAMING AND DETAILS 161KV 3 PHASE LIGHTNING ARRESTER STRUCTURE A247, FOUNDATION C407		2200			
	COOP-S-000010-001	000A0	STRUCTURE STEEL FRAMING AND DETAILS 161KV POWER POT/SSVT SUPPORT STRUCTURE C614 (A264)		2200			
	COOP-S-000011-001	000A0	STRUCTURE STEEL FRAMING AND DETAILS 161KV LIGHTNING MAST 60' STRUCTURE A251, FOUNDATION C511		2200			
	COOP-S-000012-001	000A0	STEEL STRUCTURE C601- 60' SCADA COMMUNICATION MAST ERECTION VIEW AND STEEL DETAILS		2200			
	COOP-S-000013-001	000A0	STRUCTURE STEEL FRAMING AND DETAILS 161KV AND 34KV BUS SUPPORT SPACERS: A701 (A471) & C701 (A271), LA MOUNTS: C702 (A272) & C703 (A273)		2200			
	COOP-S-000014-001	000A0	STRUCTURE STEEL FRAMING AND DETAILS 161KV CCVT SUPPORT STRUCTURE C414 (A244)		2200			
	COOP-S-000015-001	000A0	STRUCTURE STEEL FRAMING AND DETAILS 161KV WAVE TRAP SUPPORT STRUCTURE C406 (A246)		2200			
	COOP-S-000016-001	000A0	STRUCTURE STEEL FRAMING AND DETAILS 161KV SINGLE PHASE LOW BUS SPRT. STRUCTURE C311 (A231)		2200			
	COOP-S-000017-001	000A0	STRUCTURE STEEL FRAMING AND DETAILS 161KV COMBINED CT/PT STAND STRUCTURE C410 (A240)					



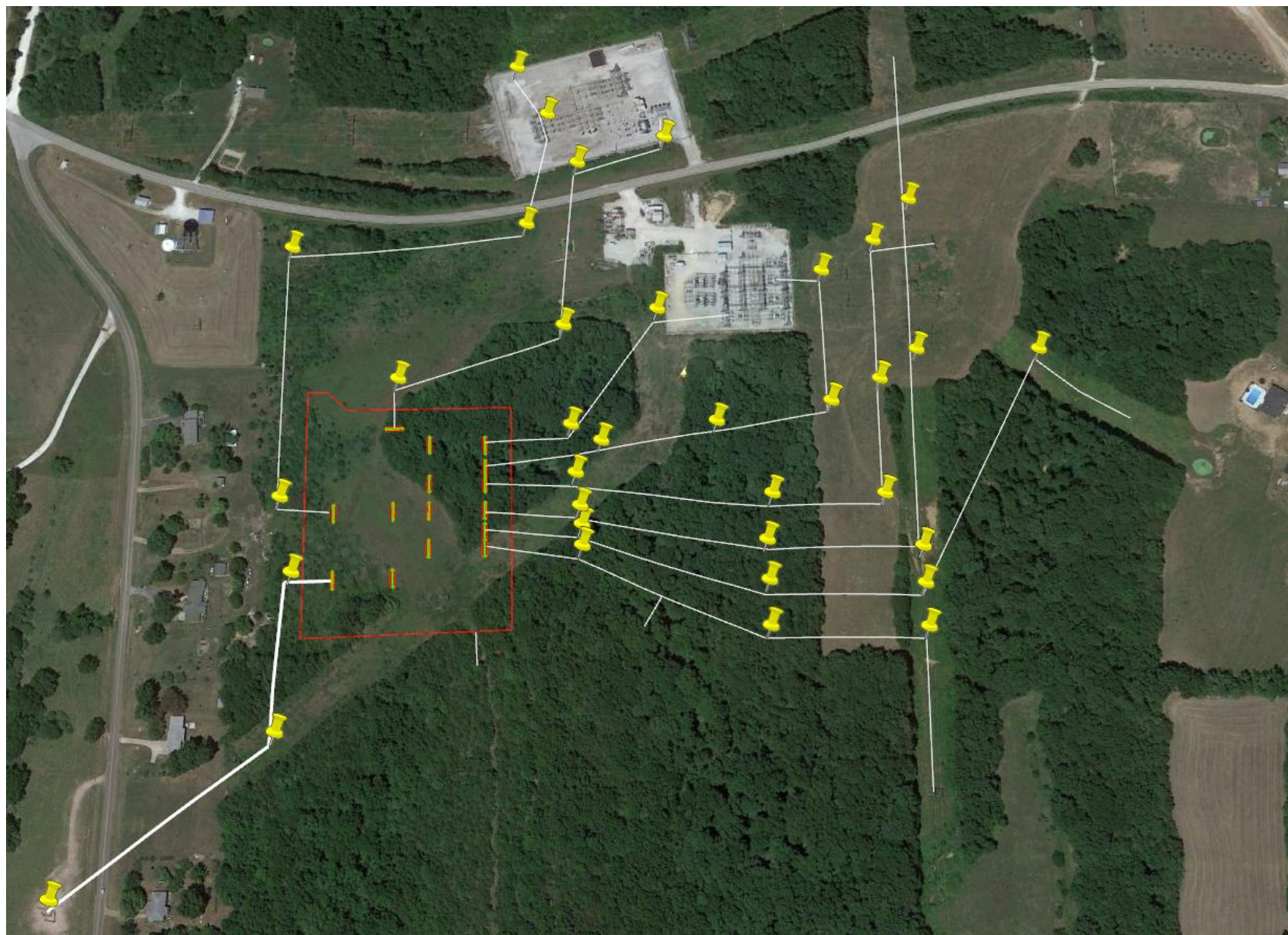


Figure A – Overhead View of Cooper Substation Project and Ancillary Transmission Lines (with structure locations identified by the yellow pins)

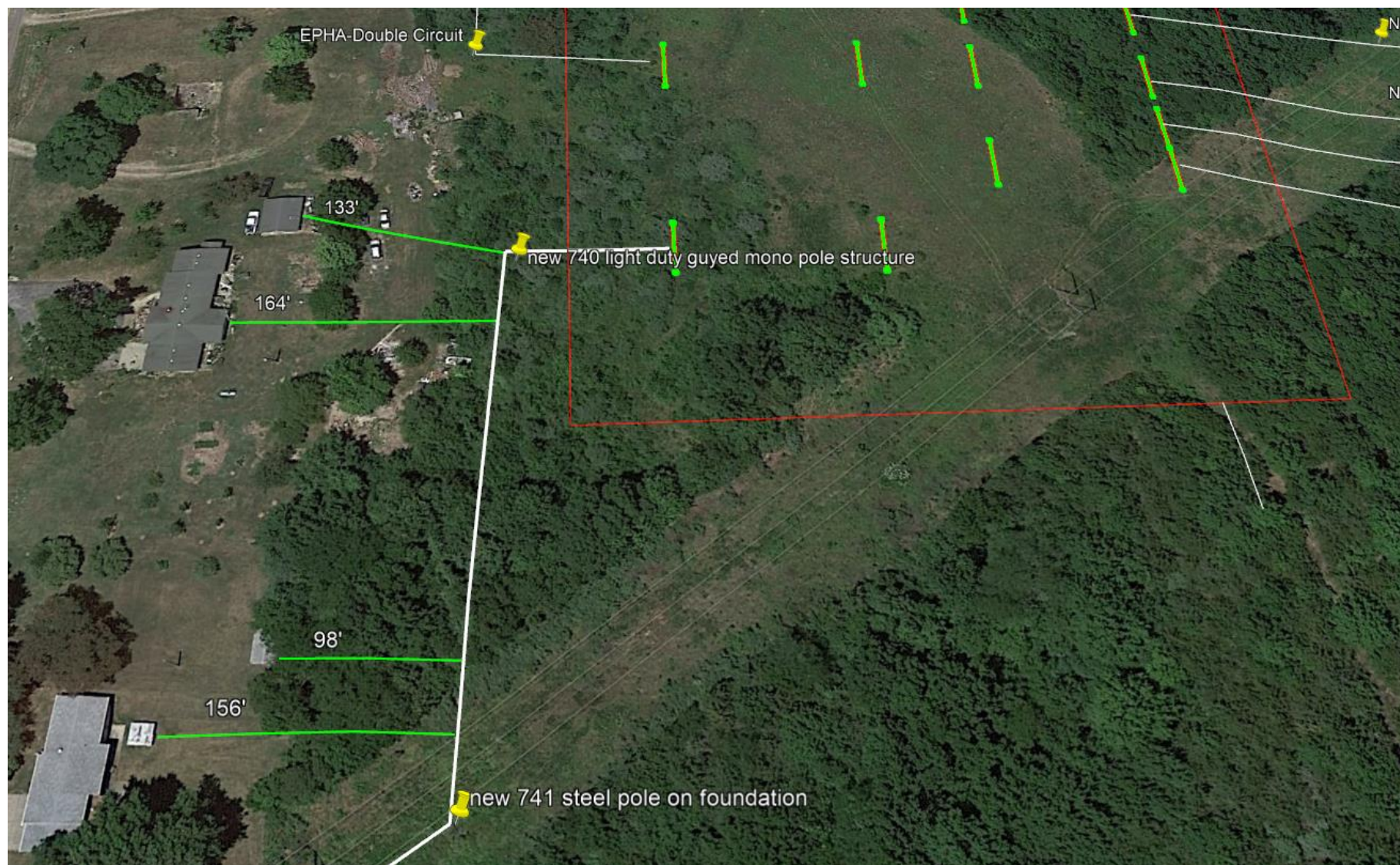


Figure B – Distance from Homes to Centerline of Cooper's Permanent Transmission Line

Note that this permanent transmission line is well within the western boundary of Ameren's Missouri's fee-owned parcel, shown in Figure C.

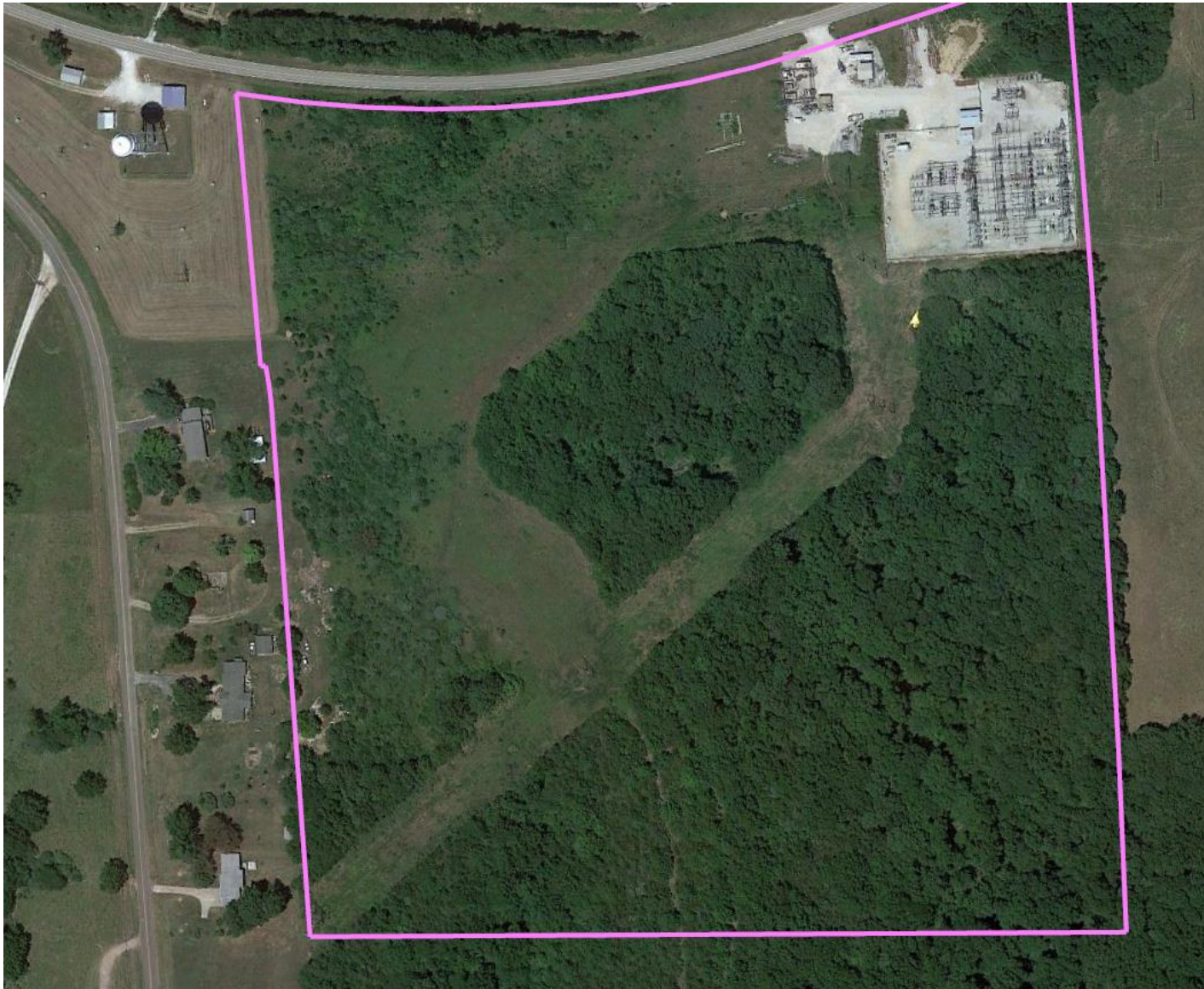


Figure C – Boundary of Ameren Missouri's Fee-Owned Parcel for the Cooper Substation Project and Ancillary Transmission Lines.

Ameren Missouri has owned this parcel since 1976. A deed record search shows that the residences to the west were acquired by the current owners (or the current owners' families) not earlier than 1985.



Figure D – Illustration of Existing Transmission Line Routes