

Exhibit A

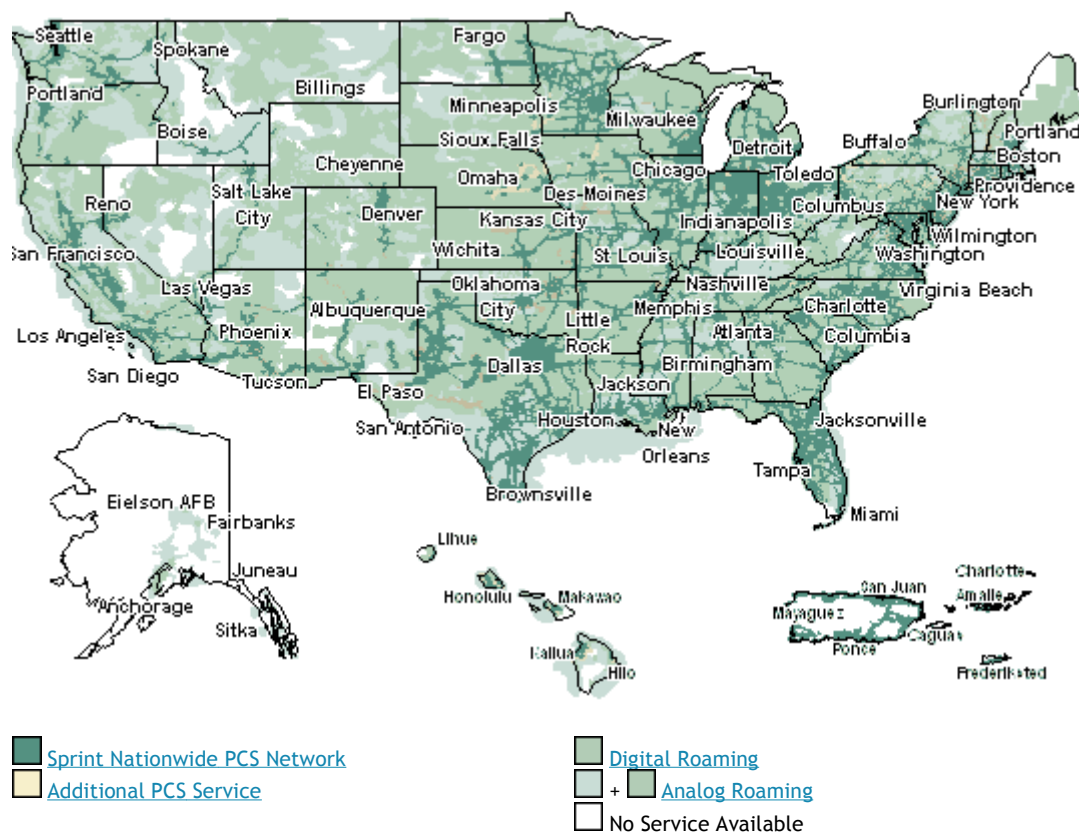
Wireless Carriers Operating in EMBARQ Exchanges

Sprint Nationwide PCS Network

[Go >](#)

When you're on the Sprint Nationwide PCS Network, you can call anywhere or receive calls using any Sprint PCS® Phone.

We're dedicated to expanding and improving the best, most complete network around. Use this interactive map to check out tower availability in areas where you work and travel. [Check for towers in your area.](#)

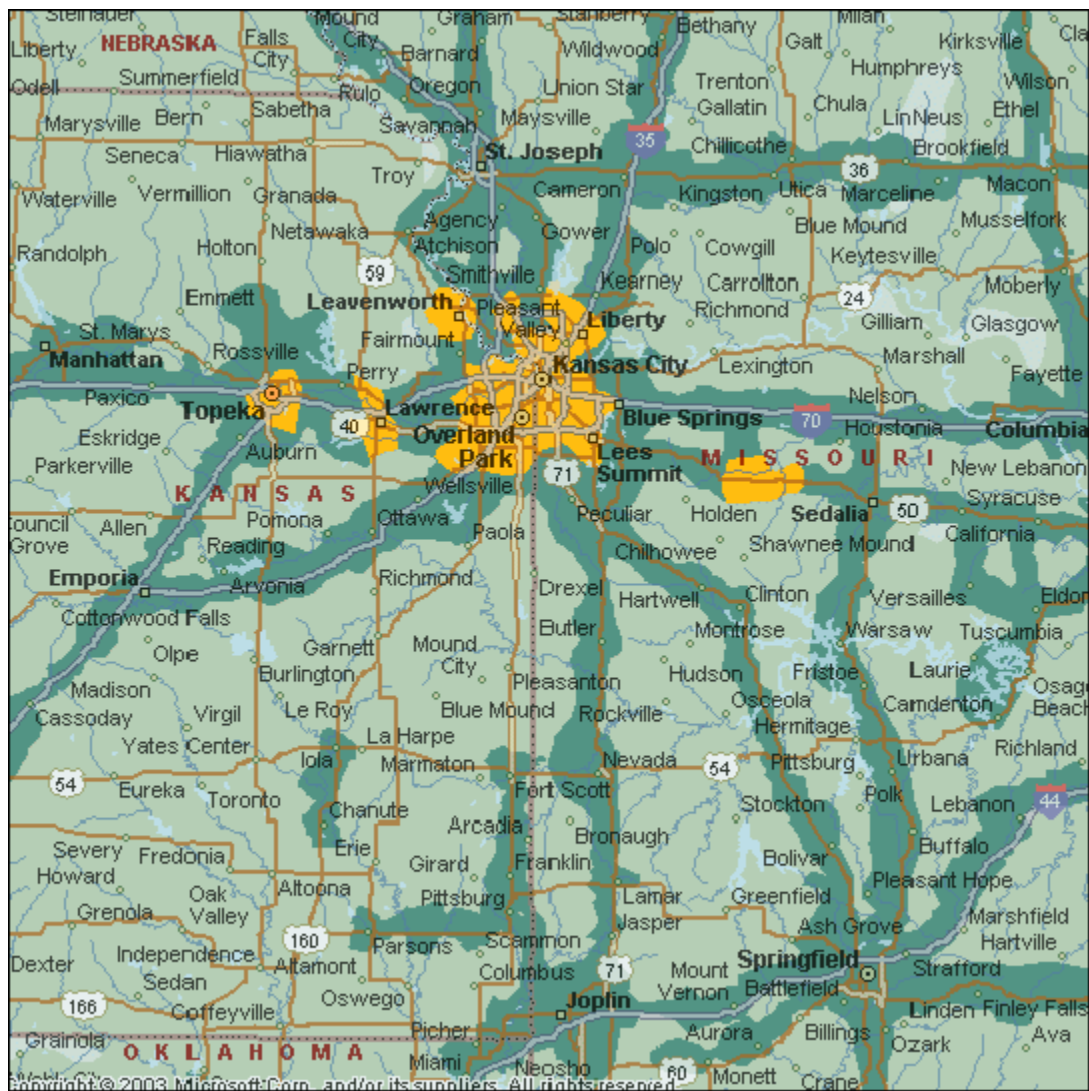


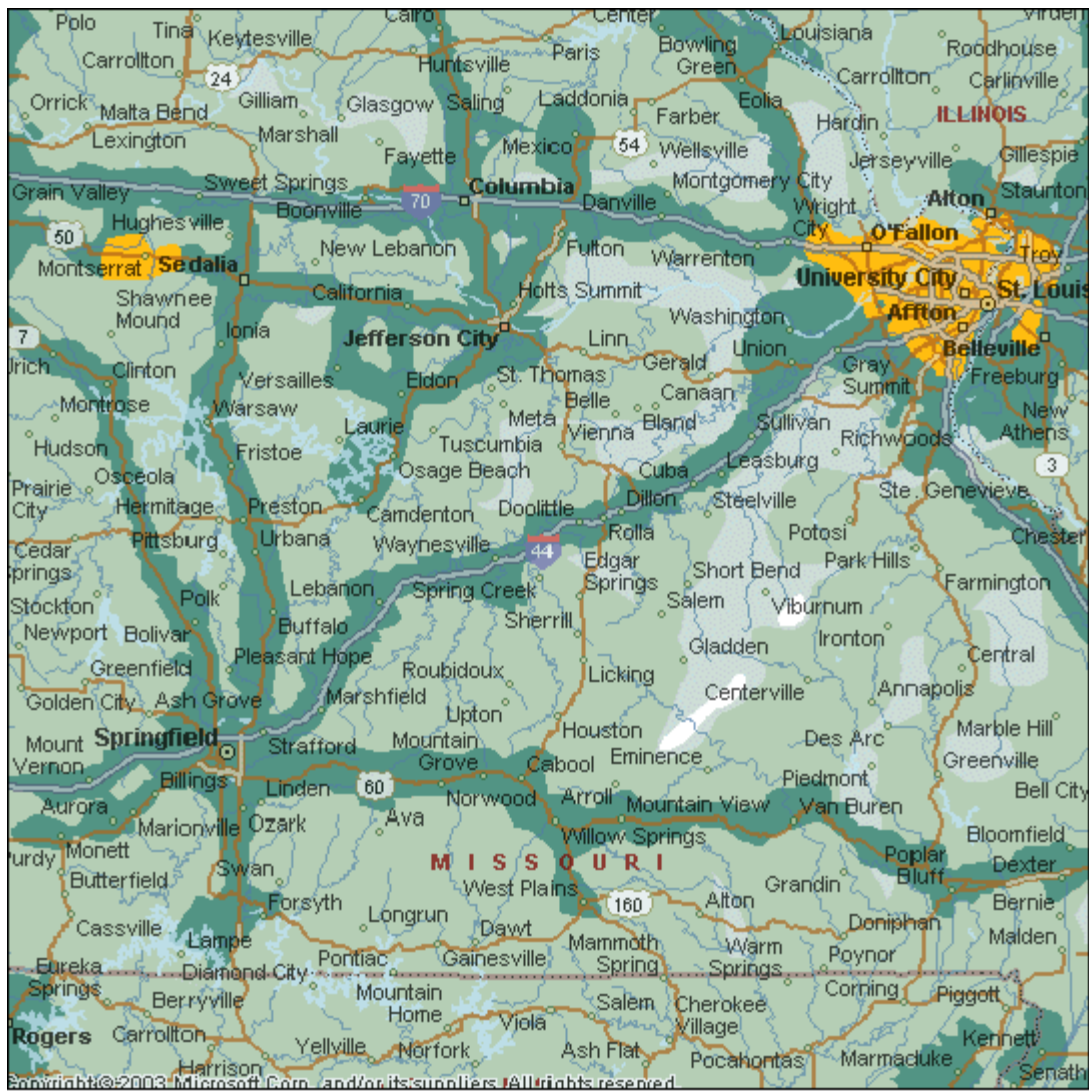
Maps depict approximate service areas for outdoor coverage based on computer-generated radio-frequency coverage projections and information provided by third parties, but are not a guarantee of service availability. Actual coverage, quality and availability of coverage may vary based on network problems, signal strength, your equipment, terrain, structures, weather and other limitations or conditions. Coverage is not available everywhere and may not be available in all areas depicted on these maps.

Business: [Regulatory, Tariffs, Rates and Terms](#)

[Your Privacy Rights](#) | [Acceptable Use Policy & Visitor Agreement](#) | [Copyright Notices](#) | [Find a Store](#) | [Contact Us](#)

© 2006 Sprint Nextel. All rights reserved.





[Sprint.com](#) | [Personal](#) | [Business](#) | [About Us](#)

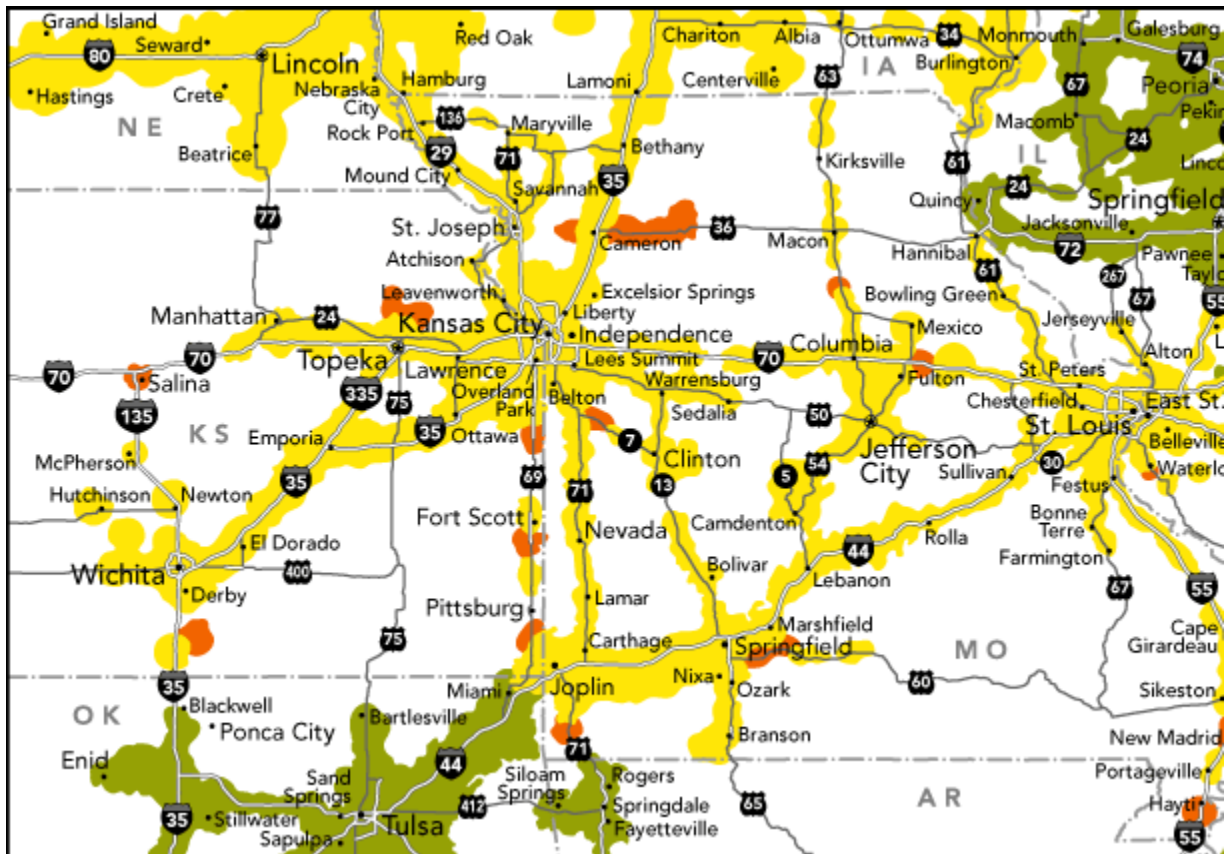
NEXTEL | Kansas City Area Coverage Map

Coverage shown on the coverage maps is a general prediction of outdoor coverage, and does not guarantee that coverage will be available in all covered geographic areas at all times. Wireless coverage is impacted by, among other things, terrain, weather, antenna location, system modification, foliage and man-made structures (such as buildings), and therefore cannot be predicted precisely at all times.

Digital Cellular and local walkie-talkie coverage (approximate)

Digital Cellular and coast-to-coast walkie-talkie coverage

Estimated Future Coverage



[Find Local Sales Locations in Kansas City Area](#)

[View Rate Plans in Kansas City Area](#)

[Check Coverage In Another Area](#)

[Your Privacy Rights](#) | [Acceptable Use Policy and Visitor Agreement](#) | [Copyright Notices](#) | [Find a Store](#) | [Contact Us](#)

© 2006 Sprint Nextel. All rights reserved.



Coverage Locator

This tool identifies where Verizon Wireless offers service.

Enter either the zip code or the city and state for corresponding wireless coverage information.



What coverage do you want to view?

America's Choicesm Maps

- ☐ [America's Choice for plans initiated before 2/21/05](#)
- ☒ [America's Choice/No Roaming for plans initiated on or after 2/21/05](#)
- ☐ [National SingleRatesm Map](#)
- ☐ [NationalAccess and Enhanced Services Map](#)
- ☐ [BroadbandAccess and V CASTsm Map](#)
- ☐ [INpulsesm/EasyPay Map](#)
- ☐ [Verizon Wireless Network Map](#)

Zip Code OR City State

DISPLAY MAP

Important information about Coverage Locator Maps

*Extended coverage provided through agreements with other wireless carriers.

The map is not a guarantee of coverage and contains areas with no service. Service will not work, and calls cannot be placed or received outside the America's Choice Coverage Area.

CINGULAR NATION

No Roaming or Long Distance Charges Nationwide

- Cingular Nation (with a GSM handset)**
 - Anytime, Mobile to Mobile and Night & Weekend Minutes apply
- Future Coverage Area**
 - Estimated Availability by Year End 2005
- No Service Area**



Cingular GSM handset required on Cingular Nation plans.

Your phone's display does not indicate the rate you will be charged. Please review your coverage map for areas and out of plan. Map depicts an approximation of outdoor coverage. Map may include areas served by unaffiliated and may depict their licensed area rather than an approximation of the coverage there. Actual coverage area substantially from map graphics, and coverage may be affected by such things as terrain, weather, foliage, but other construction, signal strength, customer equipment and other factors. Cingular does not guarantee Charges will be based on the location of the site receiving and transmitting the call, not the location of the Future Coverage, if depicted above, is based on current planning assumptions but is subject to change and is relied upon.



Wireless Plans

We want you to have the right plan — and love every minute of it. Whether you're looking to call near home or far away, we have a plan for you.

 [COMPARE PLANS](#) | [VIEW PLAN ADD-ONS](#)

Start 1
Call 1-8
Find a :

[Home](#) | [Personal](#) | [Wireless](#) | [Plans](#)

Total Freedom®



Call anywhere in the U.S from coast to coast without long-distance or roaming fees. [>MORE](#)

Highlights

- Our largest coverage area
- Free nationwide long distance
- Free nationwide roaming

National Freedom®



Connect with friends, family and associates in major U.S. cities at great rates. [>MORE](#)

Highlights

- Extensive coverage including major U.S. cities
- Free nationwide long distance
- Free roaming near major cities

Greater FreedomSM

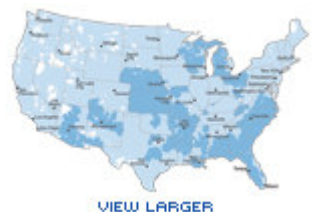
[VIEW YOUR COVERAGE](#)
 [> GO](#)

Get the value you deserve by keeping most calls close to home, while using extended coverage when you need to. [>MORE](#)

Highlights

- Large local coverage area
- Best value for local callers
- Free nationwide long distance

Prepaid Wireless



Skip the contracts and monthly fees by paying as you talk, but also take advantage of our extensive network. [>MORE](#)

Highlights

- Large local coverage area
- Free roaming and long distance within our network
- International calling to Canada, Mexico and Puerto Rico

At Your Service



Buy one cell phone get one free

The Audiovox CDM8910 for only \$19.99.

[> MORE](#)

Add Lines

Share your minutes on up to 4 lines

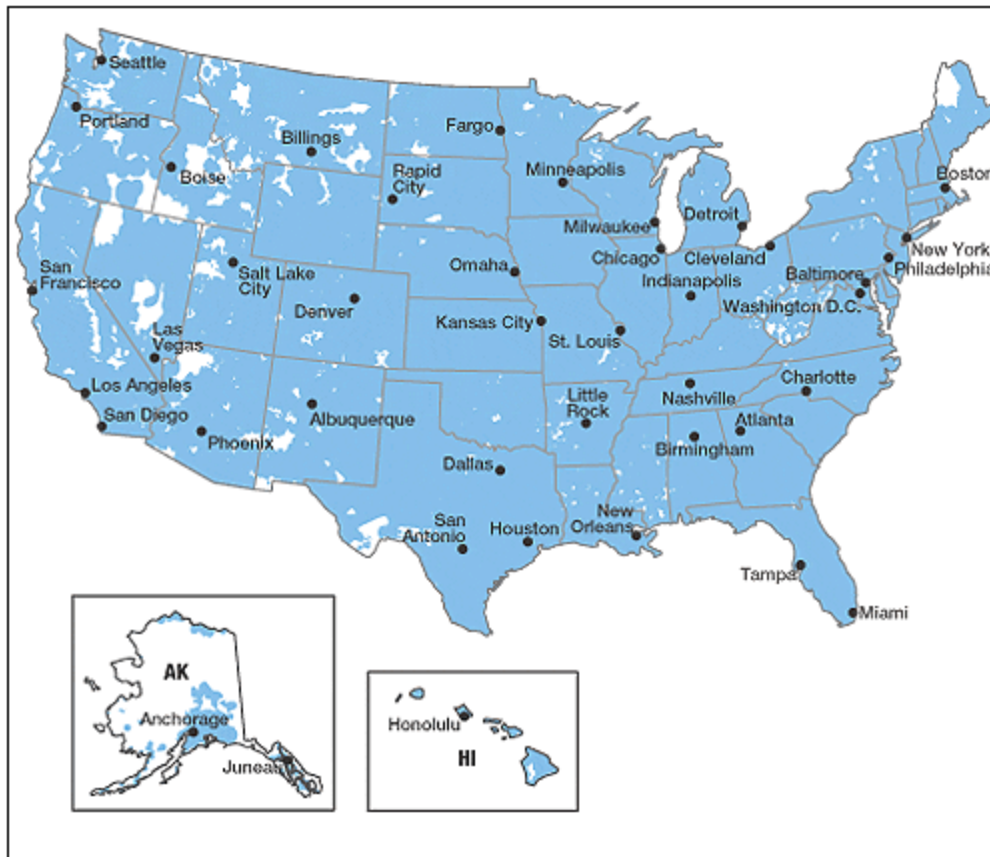
[> MORE](#)

Roam Around



AxcessSM To







COVERAGE MAP and CALLING PLANS

COVERAGE MAP and CALLING PLANS

The map shows an approximation of service coverage. Actual coverage may vary. Service may be interrupted or limited due to weather, terrain, customer equipment or network limitations. Coverage indoors may also vary. U.S. Cellular does not guarantee coverage.

Service agreement required. All service agreements subject to an early termination fee. Credit approval required. Roaming charges, fees, surcharges, overage charges, and taxes apply. 96¢ Federal and Other Regulatory Fee charge applies. This is not a tax or government required charge. Local network coverage and reliability may vary. Usage rounded up to the next full minute. Use of service constitutes acceptance of our terms and conditions. Other restrictions apply. See store for details.

ShareTalk®: Limit of three ShareTalk Lines per primary line. Primary line must be on a plan of \$35 or higher.

easyedge™ Phone Service: U.S. Cellular-approved phone required on all **easy**edge plans. Only available in U.S. Cellular licensed markets.

easyedge™ Picture Messaging Service requires a U.S. Cellular-approved phone and usage plan. Picture Messaging only available in **easy**edge coverage area (see map for details). You will be charged for picture messaging sent from your phone, even if not delivered to the intended recipient due to system or compatibility issues. You will not be charged for picture messages sent to your phone unless you open and download them. U.S. Cellular is not responsible for content of pictures. **easy**edge is the proprietary mark of United States Cellular Corporation.

Signal Dial Direct® Plus is an insurance plan administered by The Signal® and underwritten by Member Companies of Assurant Group. A summary of coverage is available from The Signal by calling 1-800-480-0167.

Roadside Assistance is limited to four calls per year and a maximum of \$50.00 per service call (\$100.00 per winning). Additional terms and conditions apply. See store for details.

Mobile-to-Mobile rate applies to calls you make or receive in your Mobile-to-Mobile Calling Area (see brochure for details). Roaming indicator on your phone must be off for Mobile-to-Mobile rates to apply. 10¢ per minute for calls exceeding Mobile-to-Mobile packaged minutes. Unused minutes cannot be carried over to next month.

Mobile Messaging: Digital phone and service required. Service may not work outside your digital local calling area. Functionality may depend on other carrier's networks and phones. U.S. Cellular does not guarantee message delivery or timeliness. 150-character limit per message. U.S. Cellular not responsible for content of messages. A charge of 10¢ per outgoing message applies if no messaging package is selected or existing package limit is exceeded. For internet transmission, message content including your phone number may be intercepted by third parties. By using U.S. Cellular's Mobile Messaging you agree to be bound by all terms and conditions viewable at www.uscellular.com/Messagingterms.

Directory Assistance: Airtime and applicable toll charges will apply. Directory Assistance charges apply to all Directory Assistance calls.

Unlimited Local CALL ME™ Minutes are not deducted from package minutes and are only available when receiving calls in your local calling area. Does not include Expanded Local Area or nationwide roaming area.

Unlimited Night and Weekend Minutes valid Monday through Friday 7 p.m. to 6:59 a.m. and all day Saturday and Sunday. Night and weekend minutes are available in local calling area only. Local calling area differs from Expanded Local Area.

U.S. Cellular reserves the right to terminate your service if less than 50% of your overall minutes in each of three consecutive billing cycles are used in U.S. Cellular's licensed markets. If on a SpanAmerica or National plan, please refer to the color coded legend entitled "U.S. Cellular's Licensed Markets". Service area may vary depending on the digital technology of your phone.

Optional Features

ShareTalk®	
Per additional line with a Local Plan	\$15.00/mo.
Per additional line with a National Plan	\$20.00/mo.
Share your minutes without sharing your phone. ShareTalk allows up to three additional lines to share the minutes on one account.	
Mobile Messaging	
Can't talk? Send and receive text messages from your wireless phone. All packages include unlimited incoming messages . See brochure for details.	
Mobile Messaging 1000	\$14.95/mo./line
Mobile Messaging 500	\$9.95/mo./line
Mobile Messaging 250	\$5.95/mo./line
Mobile Messaging 100	\$3.95/mo./line
Mobile Messaging 50	\$2.95/mo./line
Each additional outgoing message	10¢/message
Add an e-mail address for your phone	\$1.95/mo.

Signal Dial Direct® Plus Wireless Phone Insurance	\$4.95/mo.
Replaces or repairs your phone if it's lost, stolen or damaged. See Signal Insurance brochure for coverage details. Underwritten by: Member companies of Assurant Group	
Roadside Assistance	\$2.95/mo.
24 hours a day, 365 days a year — help is just a phone call away. Protection travels with the phone. Some restrictions apply. See store for details.	
Mobile-to-Mobile Calling	
Wireless calling to and from other U.S. Cellular customers. See Mobile-to-Mobile Calling brochure for coverage area and details.	
Unlimited Minutes	\$19.95/mo.
3000 Minutes	\$14.95/mo.
1000 Minutes	\$9.95/mo.

Voice Mail	no monthly fee
Our Voice Mail service answers calls when you can't.	
Caller ID	no monthly fee
Lets you know who's calling before you answer.	

Detailed Billing	no monthly fee
Shows the time, date and cost of every wireless call on your monthly bill.	

Directory Assistance	\$1.25/call
Call Directory Assistance to get the phone numbers of the people and businesses you need. Directory Assistance is \$1.25/call within your home calling area. Pricing in other areas may vary.	

At U.S. Cellular, we're committed to providing the best customer satisfaction. We want to fulfill all of your wireless needs with the highest quality products and services at a fair price. If you have questions about calling plans or features that will enhance your wireless service, you can always get answers from an expert at your local U.S. Cellular store, agent location or by calling one of our customer service specialists at 1-888-944-9400.

order at home, **FREE delivery**

1-888-BUY-USCC

uscellular.com

International Dialing	no monthly fee
U.S. Cellular's International Dialing service gives you direct access to over 200 countries from your wireless phone. There is no monthly charge or extra fee for the service, simply pay for the calls you make. Consult a U.S. Cellular representative or our website for country rates and availability. Rates range from \$.19 to \$1.25 per minute.	

Automated Payment Service	no monthly fee
No checks to write. No stamps to buy. We will automatically deduct your cell phone bill from your checking account or a credit card — no extra cost.	

easyedge™ Phone Service	see brochure for details
easy edge Phone Service keeps you connected by providing instant access to news, sports, entertainment, weather forecasts, stock quotes, maps and directions. Have more fun by downloading the latest ringtones, games and jokes. The easy way to get more from your phone.	

easyedge Picture Messaging Service	see brochure for details
With easy edge Picture Messaging Service you can snap and send pictures with ease. Personalize your photo by adding text and sound. A picture adds information and fun to your message.	

Unlimited Local CALL ME™ Minutes	
Per line	\$5.95/mo.
Per Account on ShareTalk®	\$9.95/mo.
Receive unlimited incoming calls from anywhere, anytime within your local calling area without using your Anytime Minutes. Available on Local and National plans.	

Unlimited Local Night and Weekend Minutes beginning at 7 p.m.	
Per line	\$5.95/mo.
Per Account on ShareTalk®	\$9.95/mo.
Unlimited local night and weekend minutes, including nationwide long distance. Available on Local and National plans.	

Miscellaneous

Activation Fee	\$30.00
Equipment Change Fee	\$15.00

Important Numbers	
Customer Service	1-888-944-9400
Order at Home	1-888-BUY-USCC 289-8722
Business Services	1-866-USC-4BIZ 872-4249



- 30-Day Guarantee — test our service, networks and products
- Customer service you can count on
- Change your calling plan to fit your needs
- Upgrade to phones with the latest technology



MID - CENTRAL



COVERAGE MAP and CALLING PLANS



Local Plans Includes Nationwide Long Distance

Monthly Access	\$39. ⁹⁵	\$49. ⁹⁵	\$69. ⁹⁵	\$99. ⁹⁵
Anytime minutes per month	1000	1300	1800	2500
Additional per minute rate	40¢/min.	40¢/min.	40¢/min.	30¢/min.

Expanded Local Calling Rate: 30¢/minute (includes long distance)

Included Features: Voice Mail, Call Waiting, Caller ID, Call Forwarding, Three-Way Calling, Detailed Billing, and Mobile Messaging (10¢ per message).

Roaming Rate: 69¢/minute (nationwide, includes long distance)

ShareTalk®: \$15.00/line, per month

Ask About Unlimited Local CALL MESM Minutes

Receive unlimited incoming calls from anywhere, anytime within your local calling area without using your Anytime Minutes.

7 p.m.
Unlimited Local Nights and Weekends available

National Plans No Roaming No Long Distance Charges

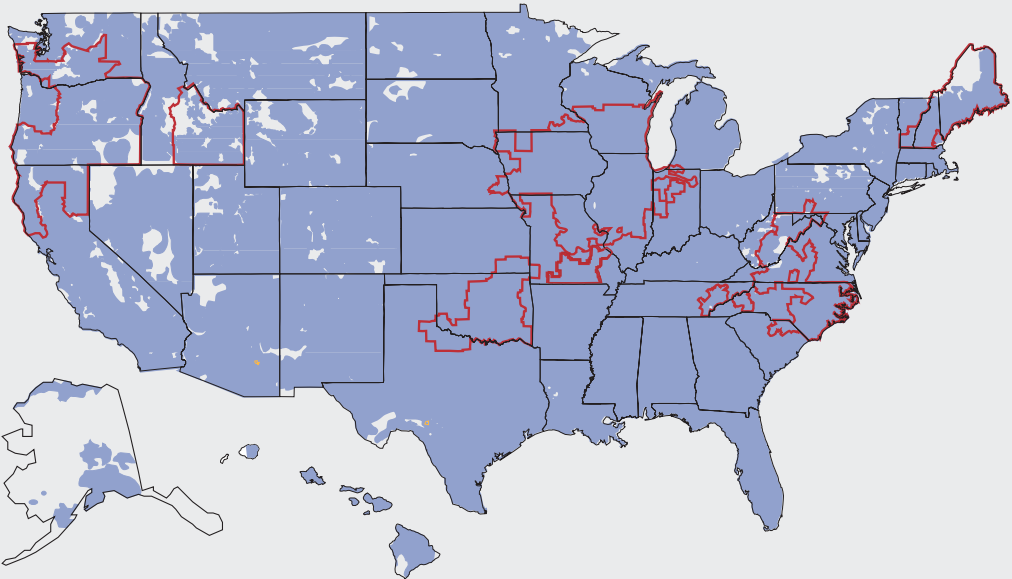
Monthly Access	\$49. ⁹⁵	\$69. ⁹⁵	\$99. ⁹⁵
Anytime minutes per month	800	1200	2000
Additional per minute rate	40¢/min.	40¢/min.	30¢/min.

Included Features: Voice Mail, Call Waiting, Caller ID, Call Forwarding, Three-Way Calling, Detailed Billing, and Mobile Messaging (10¢ per message)

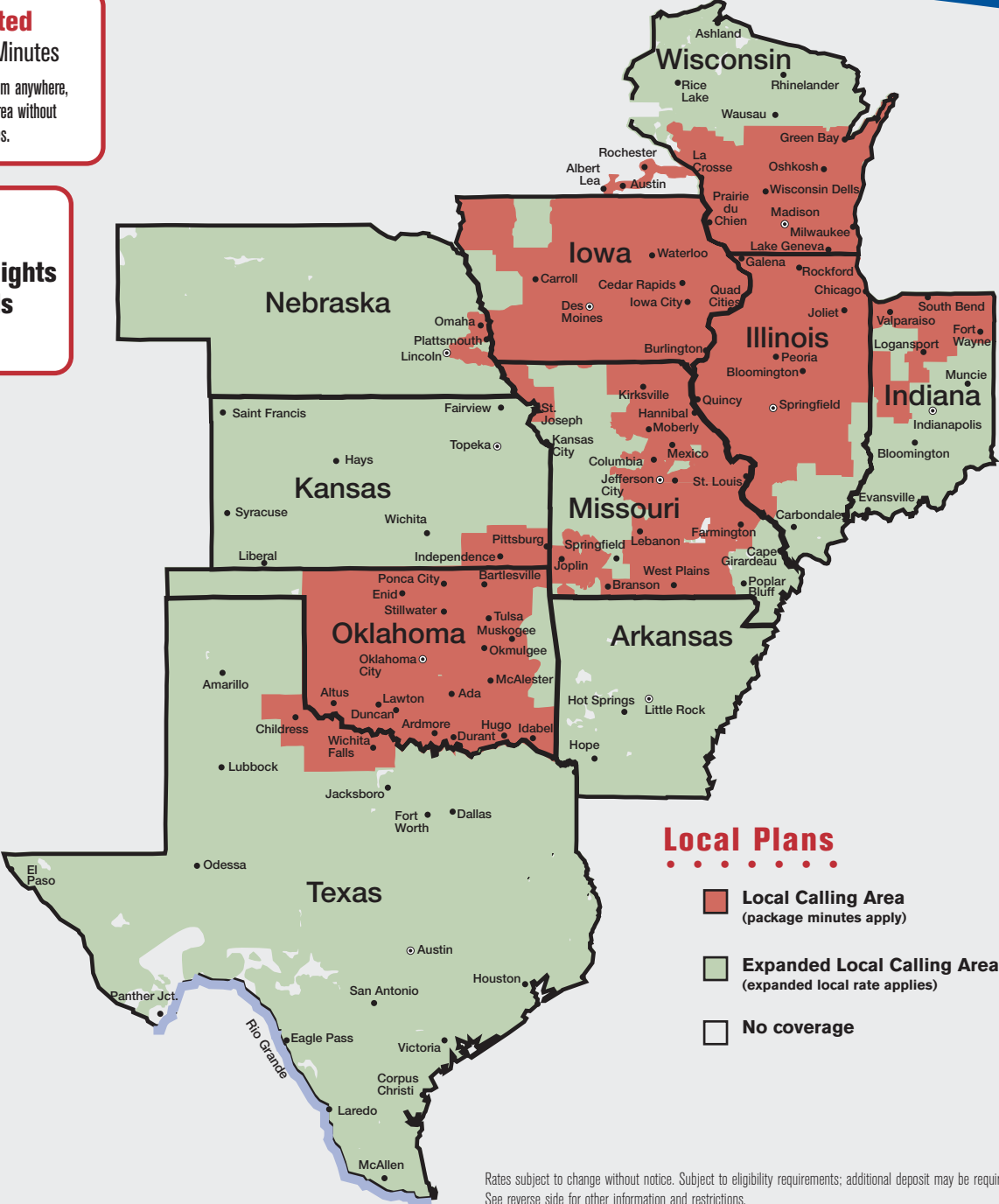
ShareTalk®: \$20.00/line, per month

National Plans

- National Calling Area
- U.S. Cellular Licensed Markets
- No coverage



Maps depict an approximation of coverage area. Actual coverage may vary. User may incur roaming charges at borders of calling areas.



Rates subject to change without notice. Subject to eligibility requirements; additional deposit may be required. See reverse side for other information and restrictions.

Search by Address | **Search by Intersection**

Check if T-Mobile coverage is right for you with Personal Coverage Check

Call anyone in America with no roaming or long-distance charges with any T-Mobile National rate plan. Make calls in more countries around the world than with any other US wireless carrier.

- >> Prepaid coverage map
- >> See international calling coverage
- >> Learn more about T-Mobile's improved coverage

Input address is invalid or missing fields.

Street

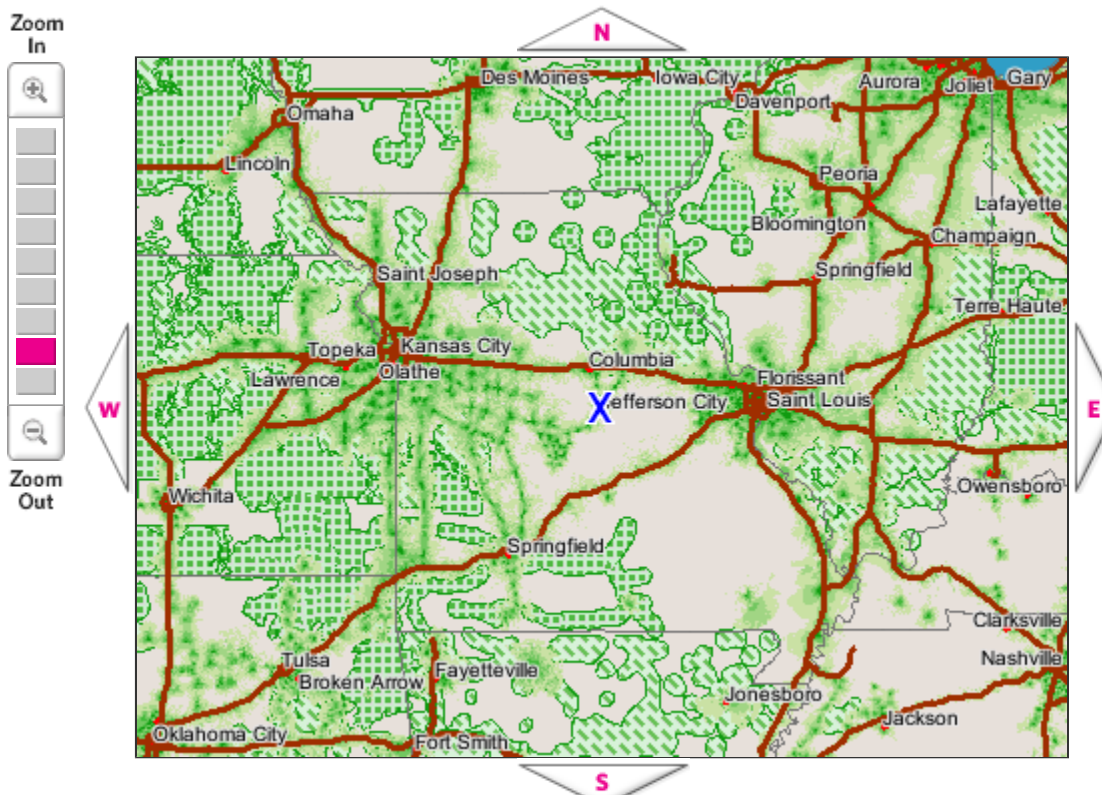
City

State Zip

☐ Display HotSpot locations

search

☒ Find a T-Mobile HotSpot location [clear](#)



Mobile-to-mobile minutes and data services are not available in certain roaming areas included on T-Mobile's coverage maps.

Map Legend



- X** Address Location
- 850 MHz Roaming Coverage
- T-Mobile USA Roaming Coverage
- T-Mobile Canada Roaming Coverage
- T-Mobile Mexico Roaming Coverage

Print map

This map predicts and approximates our wireless coverage area outdoors, which may vary from market to market and may change without notice. It may include locations with limited or no coverage. Our maps do not guarantee service availability. Even within a coverage area, there are several factors, such as: network changes, traffic volume, service outages, technical limitations, signal strength, your equipment, terrain, structures, foliage, weather, and other conditions that may interfere with actual service, quality, and availability, including the ability to make, receive, and maintain calls. Multi-band (850/1900 MHz) GSM/GPRS handset required for access to 850 Roaming Coverage. Ask a T-Mobile sales representative or visit www.t-mobile.com/morecoverage for more information regarding handset requirements and T-Mobile 850 MHz coverage. 850 MHz roaming is offered through our roaming partners; some features (e.g. picture messaging, mobile to mobile) may not be available while roaming. [Learn more >](#)

Search by Address | **Search by Intersection**

Check if T-Mobile coverage is right for you with Personal Coverage Check

Call anyone in America with no roaming or long-distance charges with any T-Mobile National rate plan. Make calls in more countries around the world than with any other US wireless carrier.

[Prepaid coverage map ›](#)

[See international calling coverage ›](#)

[Learn more about T-Mobile's expanded coverage ›](#)

Street
 City
 State Zip

☐ Display HotSpot locations

search

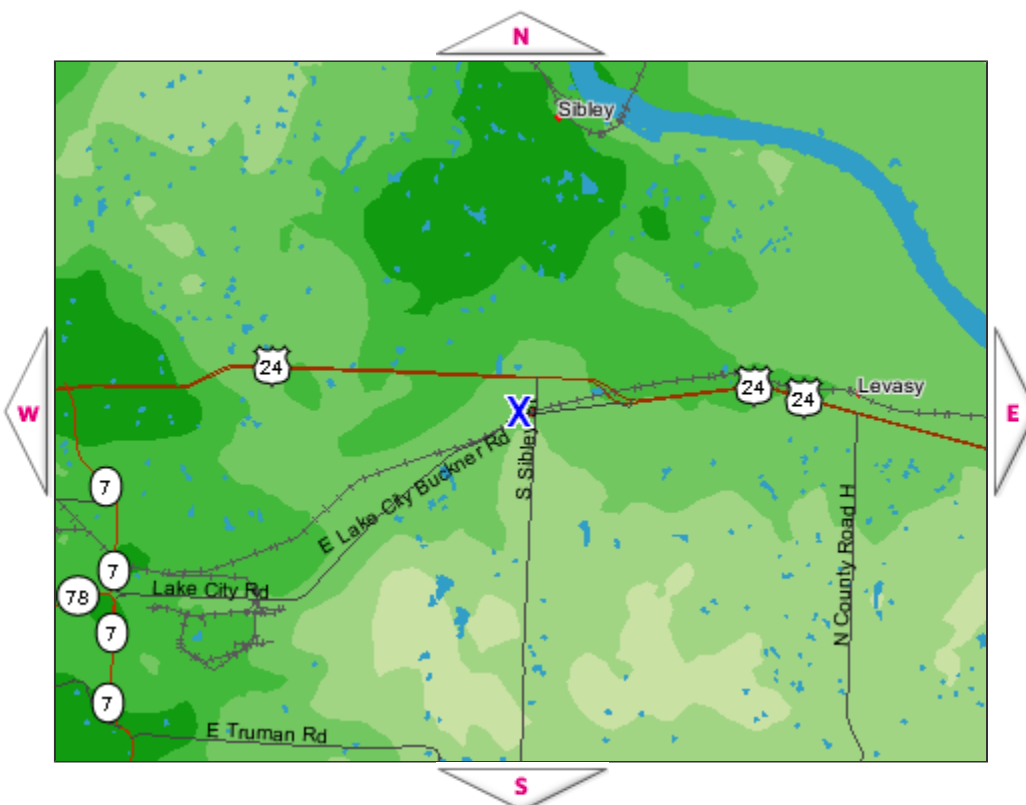
[Find a T-Mobile HotSpot location ›](#)

[clear](#)

Zoom In



Zoom Out



Mobile-to-mobile minutes and data services are not available in certain roaming areas included on T-Mobile's coverage maps.

Map Legend



- Address Location
- 850 MHz Roaming Coverage
- T-Mobile USA Roaming Coverage
- T-Mobile Canada Roaming Coverage
- T-Mobile Mexico Roaming Coverage

Print

This map predicts and approximates our wireless coverage area outdoors, which may vary from location to location and may change without notice. It may include locations with limited or no coverage. Our maps do not guarantee service availability. Even within a coverage area, there are several factors, such as: network changes, traffic volume, service outages, technical limitations, signal strength, your equipment, terrain, structures, foliage, weather, and other conditions that may interfere with actual service, quality, and availability, including the ability to make, receive, and maintain calls. Multi-band (850/1900 MHz) GSM/GPRS handset required for access to 850 Roaming Coverage. Ask a T-Mobile sales representative or visit www.t-mobile.com/morecoverage for more information regarding handset requirements and T-Mobile 850 MHz coverage. 850 MHz roaming is offered through our roaming partners; some features (e.g. picture messaging, mobile to mobile) may not be available while roaming. [Learn more ›](#)

Search by Address | [Search by Intersection](#)

Check if T-Mobile coverage is right for you with Personal Coverage Check

Call anyone in America with no roaming or long-distance charges with any T-Mobile National rate plan. Make calls in more countries around the world than with any other US wireless carrier.

[Prepaid coverage map ›](#)

[See international calling coverage ›](#)

[Learn more about T-Mobile's expanded coverage ›](#)

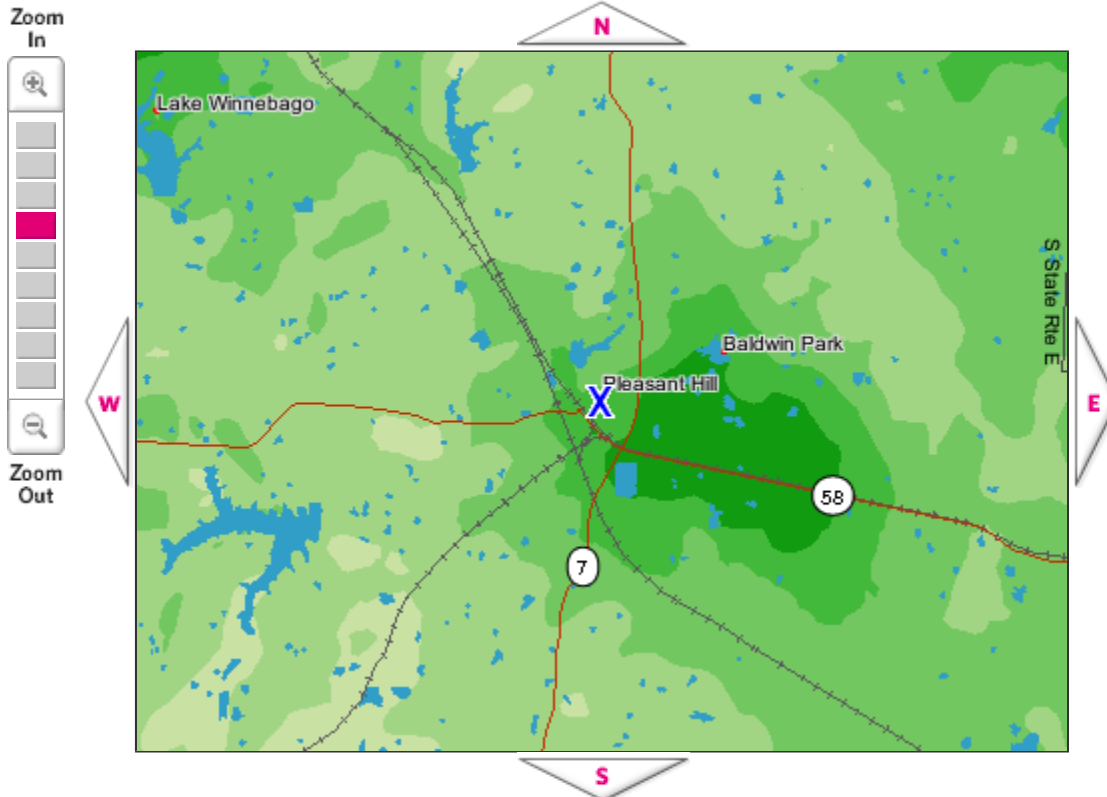
Street
City
State Zip

☐ Display HotSpot locations

[search](#)

[Find a T-Mobile HotSpot location ›](#)

[clear](#)



Mobile-to-mobile minutes and data services are not available in certain roaming areas included on T-Mobile's coverage maps.

Map Legend



- Address Location
- 850 MHz Roaming Coverage
- T-Mobile USA Roaming Coverage
- T-Mobile Canada Roaming Coverage
- T-Mobile Mexico Roaming Coverage

[Print](#)

This map predicts and approximates our wireless coverage area outdoors, which may vary from location to location and may change without notice. It may include locations with limited or no coverage. Our maps do not guarantee service availability. Even within a coverage area, there are several factors, such as: network changes, traffic volume, service outages, technical limitations, signal strength, your equipment, terrain, structures, foliage, weather, and other conditions that may interfere with actual service, quality, and availability, including the ability to make, receive, and maintain calls. Multi-band (850/1900 MHz) GSM/GPRS handset required for access to 850 Roaming Coverage. Ask a T-Mobile sales representative or visit www.t-mobile.com/morecoverage for more information regarding handset requirements and T-Mobile 850 MHz coverage. 850 MHz roaming is offered through our roaming partners; some features (e.g. picture messaging, mobile to mobile) may not be available while roaming. [Learn more ›](#)

Search by Address | **Search by Intersection**

Check if T-Mobile coverage is right for you with Personal Coverage Check

Call anyone in America with no roaming or long-distance charges with any T-Mobile National rate plan. Make calls in more countries around the world than with any other US wireless carrier.

[Prepaid coverage map >](#)

[See international calling coverage >](#)

[Learn more about T-Mobile's expanded coverage >](#)

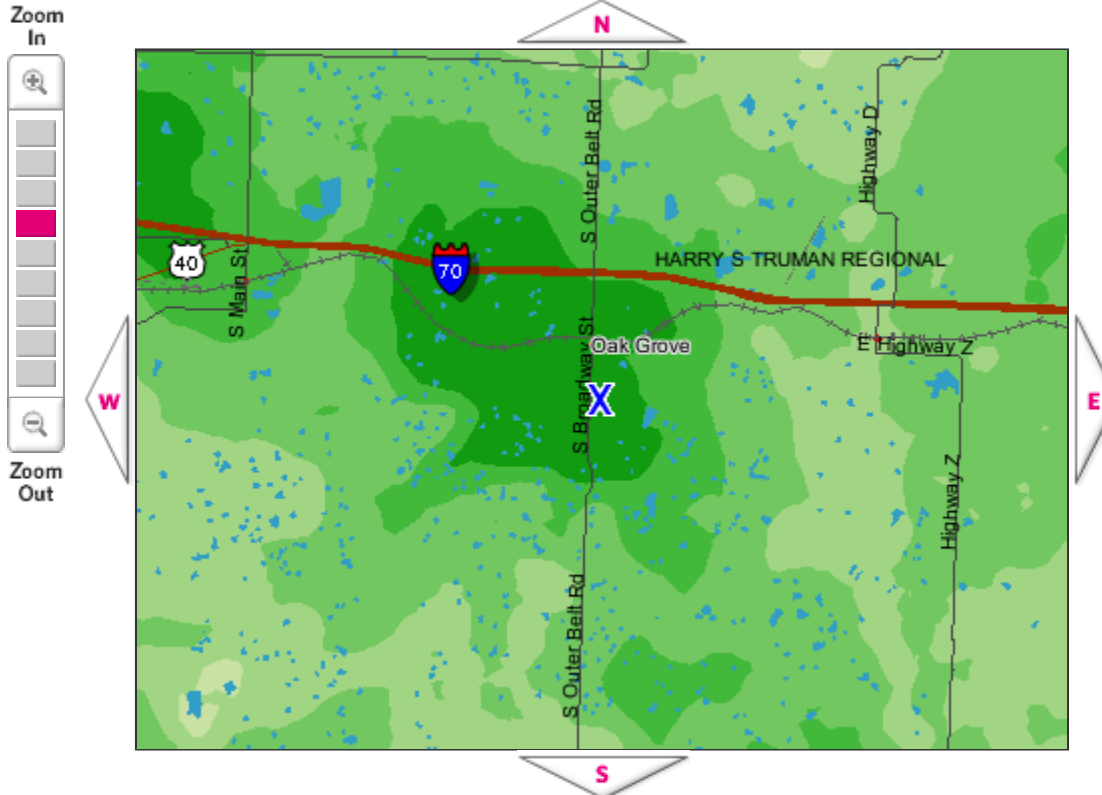
Street
 City
 State Zip

☐ Display HotSpot locations

search

[Find a T-Mobile HotSpot location >](#)

[clear](#)



Mobile-to-mobile minutes and data services are not available in certain roaming areas included on T-Mobile's coverage maps.

Map Legend



- Address Location
- 850 MHz Roaming Coverage
- T-Mobile USA Roaming Coverage
- T-Mobile Canada Roaming Coverage
- T-Mobile Mexico Roaming Coverage

Print

This map predicts and approximates our wireless coverage area outdoors, which may vary from location to location and may change without notice. It may include locations with limited or no coverage. Our maps do not guarantee service availability. Even within a coverage area, there are several factors, such as: network changes, traffic volume, service outages, technical limitations, signal strength, your equipment, terrain, structures, foliage, weather, and other conditions that may interfere with actual service, quality, and availability, including the ability to make, receive, and maintain calls. Multi-band (850/1900 MHz) GSM/GPRS handset required for access to 850 Roaming Coverage. Ask a T-Mobile sales representative or visit www.t-mobile.com/morecoverage for more information regarding handset requirements and T-Mobile 850 MHz coverage. 850 MHz roaming is offered through our roaming partners; some features (e.g. picture messaging, mobile to mobile) may not be available while roaming. [Learn more >](#)

Search by Address | [Search by Intersection](#)

Check if T-Mobile coverage is right for you with Personal Coverage Check

Call anyone in America with no roaming or long-distance charges with any T-Mobile National rate plan. Make calls in more countries around the world than with any other US wireless carrier.

[Prepaid coverage map >](#)

[See international calling coverage >](#)

[Learn more about T-Mobile's expanded coverage >](#)

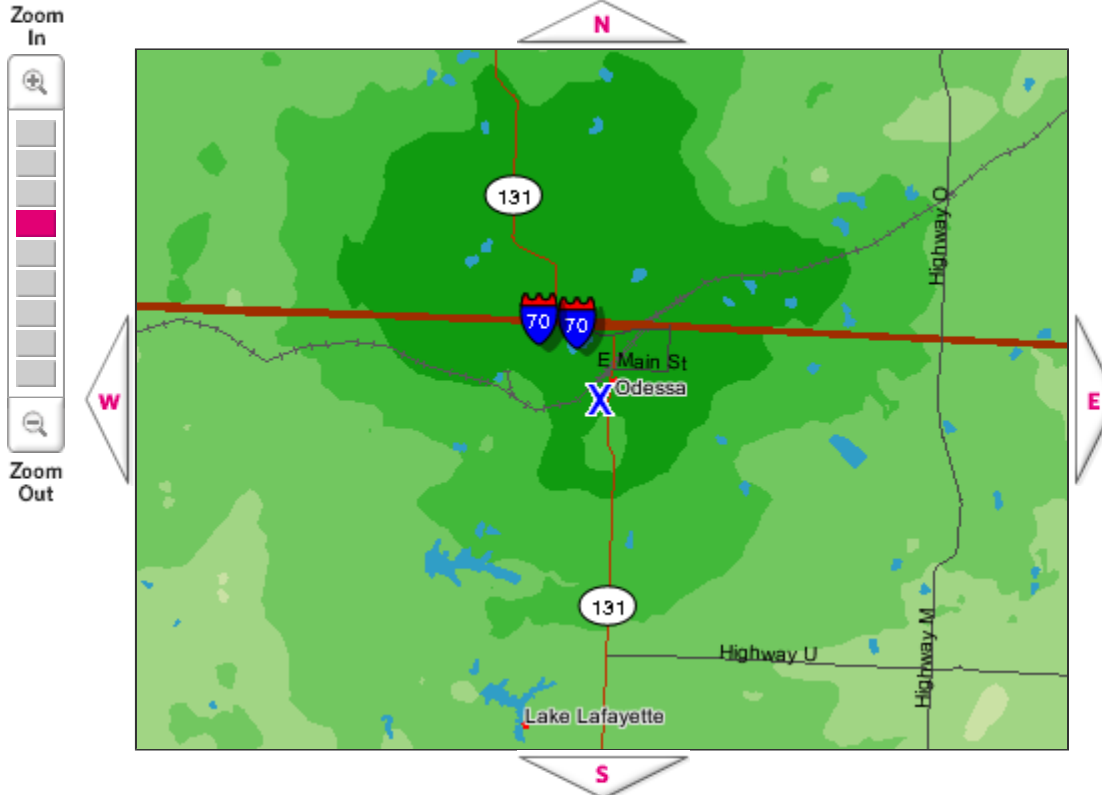
Street
 City
 State Zip

☐ Display HotSpot locations

[search](#)

[Find a T-Mobile HotSpot location >](#)

[clear](#)



Mobile-to-mobile minutes and data services are not available in certain roaming areas included on T-Mobile's coverage maps.

Map Legend



- Address Location
- 850 MHz Roaming Coverage
- T-Mobile USA Roaming Coverage
- T-Mobile Canada Roaming Coverage
- T-Mobile Mexico Roaming Coverage

[Print](#)

This map predicts and approximates our wireless coverage area outdoors, which may vary from location to location and may change without notice. It may include locations with limited or no coverage. Our maps do not guarantee service availability. Even within a coverage area, there are several factors, such as: network changes, traffic volume, service outages, technical limitations, signal strength, your equipment, terrain, structures, foliage, weather, and other conditions that may interfere with actual service, quality, and availability, including the ability to make, receive, and maintain calls. Multi-band (850/1900 MHz) GSM/GPRS handset required for access to 850 Roaming Coverage. Ask a T-Mobile sales representative or visit www.t-mobile.com/morecoverage for more information regarding handset requirements and T-Mobile 850 MHz coverage. 850 MHz roaming is offered through our roaming partners; some features (e.g. picture messaging, mobile to mobile) may not be available while roaming. [Learn more >](#)

Search by Address | **Search by Intersection**

Check if T-Mobile coverage is right for you with Personal Coverage Check

Call anyone in America with no roaming or long-distance charges with any T-Mobile National rate plan. Make calls in more countries around the world than with any other US wireless carrier.

[Prepaid coverage map >](#)

[See international calling coverage >](#)

[Learn more about T-Mobile's expanded coverage >](#)

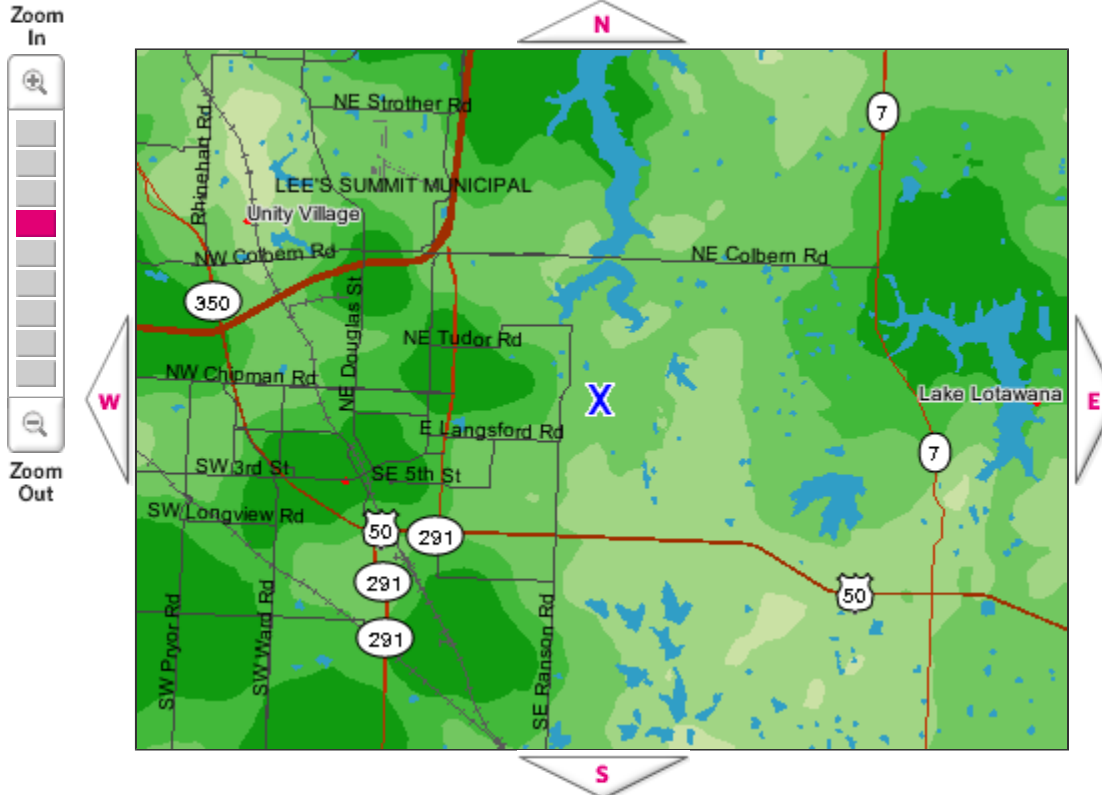
Street
 City
 State Zip

☐ Display HotSpot locations

search

 [Find a T-Mobile HotSpot location >](#)

[clear](#)



Mobile-to-mobile minutes and data services are not available in certain roaming areas included on T-Mobile's coverage maps.

Map Legend



-  Address Location
-  850 MHz Roaming Coverage
-  T-Mobile USA Roaming Coverage
-  T-Mobile Canada Roaming Coverage
-  T-Mobile Mexico Roaming Coverage

 **Print**

This map predicts and approximates our wireless coverage area outdoors, which may vary from location to location and may change without notice. It may include locations with limited or no coverage. Our maps do not guarantee service availability. Even within a coverage area, there are several factors, such as: network changes, traffic volume, service outages, technical limitations, signal strength, your equipment, terrain, structures, foliage, weather, and other conditions that may interfere with actual service, quality, and availability, including the ability to make, receive, and maintain calls. Multi-band (850/1900 MHz) GSM/GPRS handset required for access to 850 Roaming Coverage. Ask a T-Mobile sales representative or visit www.t-mobile.com/morecoverage for more information regarding handset requirements and T-Mobile 850 MHz coverage. 850 MHz roaming is offered through our roaming partners; some features (e.g. picture messaging, mobile to mobile) may not be available while roaming. [Learn more >](#)