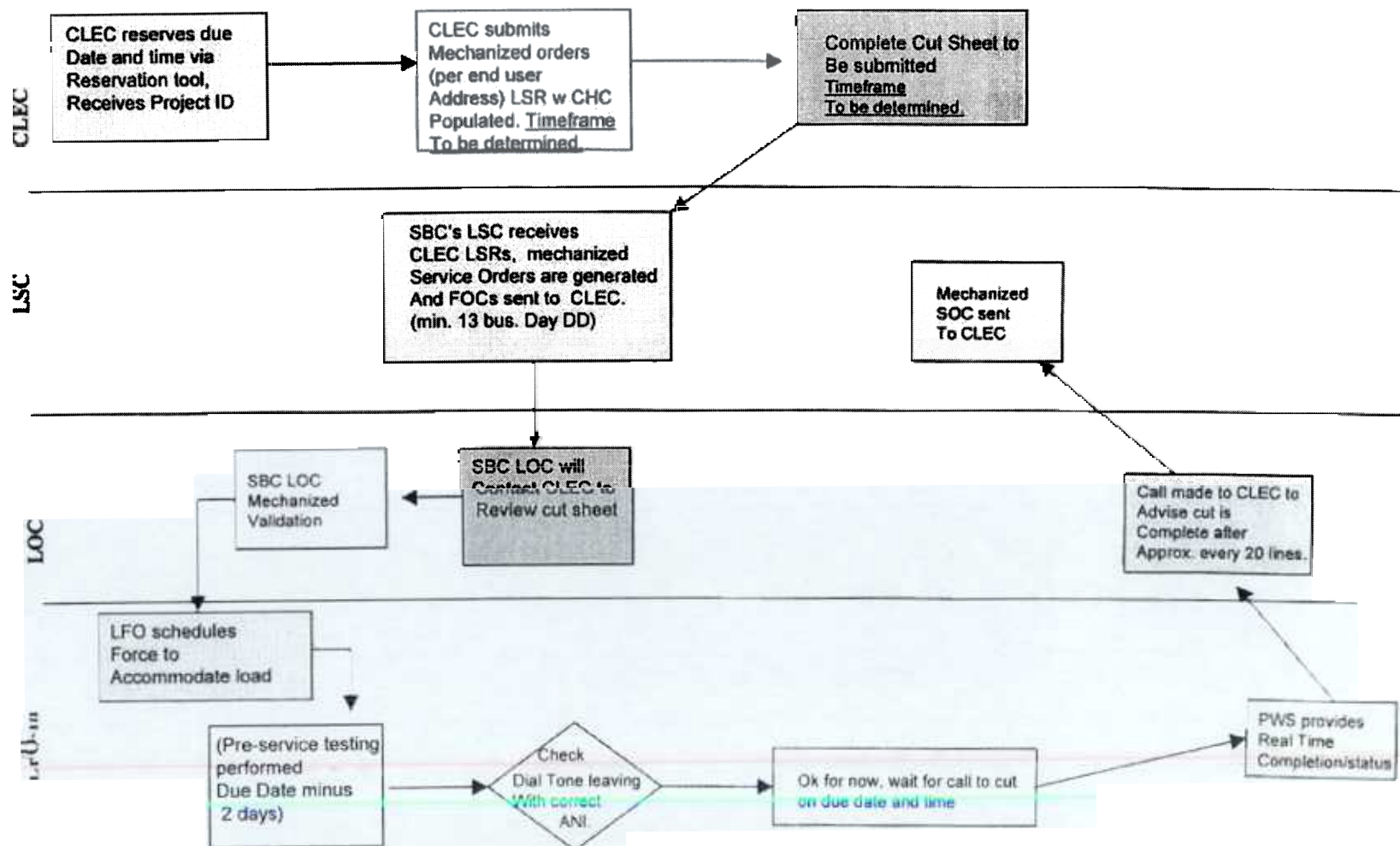


Proposed Defined Batch Process - Southwest Region

Version 1 (11/6/03)





Southwest Bulk Project Process

Current Process

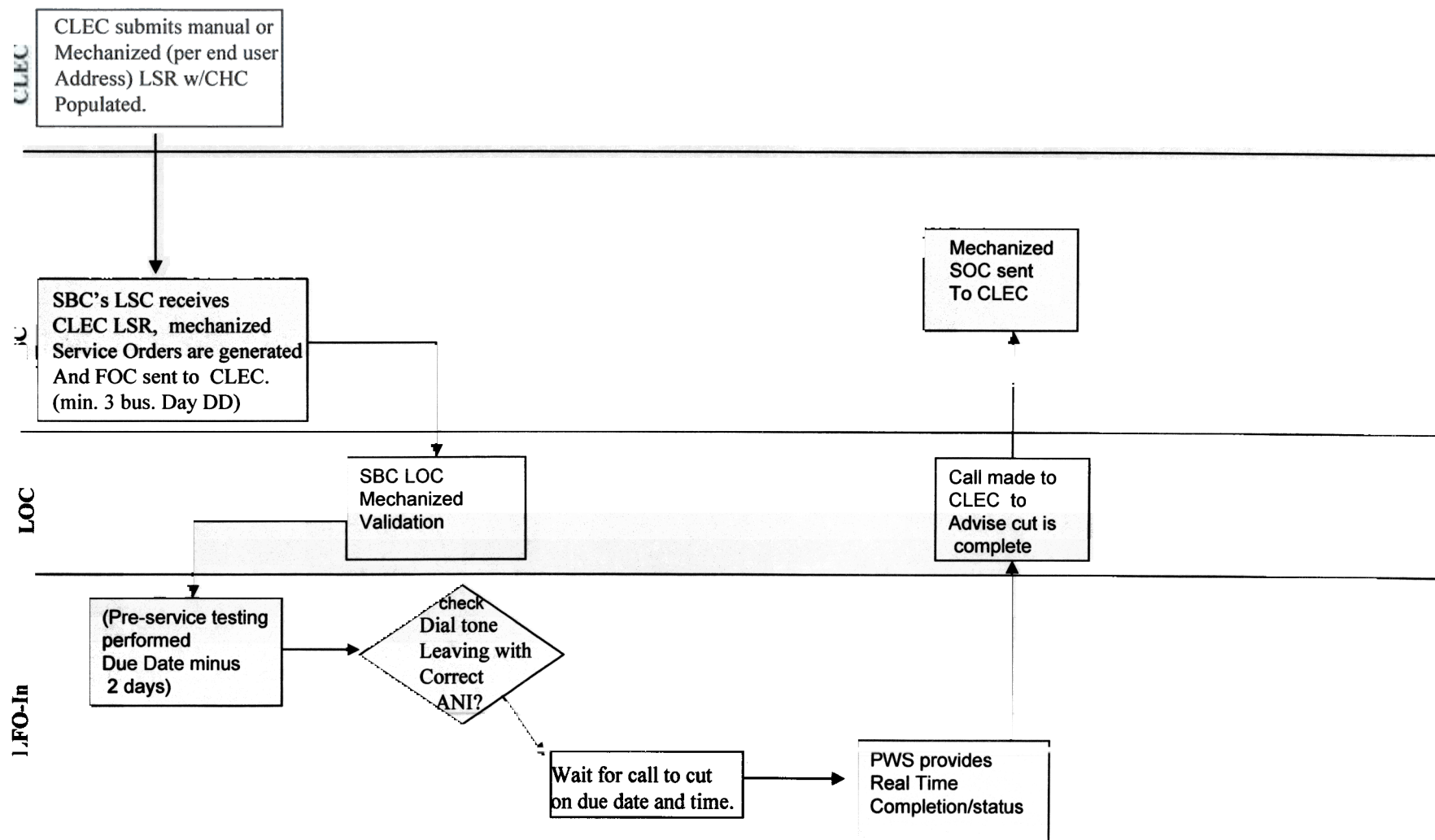
- All aspects of project is negotiated
- Enterprise focused
- Rates based on additional labor rates

Proposed Process

- Provides CLEC the ability to request more than 100 coordinated hot cuts per day
- Provides a pre-defined hot cut rate discounted to reflect efficiencies gained
- Streamlined request process
Ability to include Enterprise customers

Proposed Daily Batch Process - Southwest Region

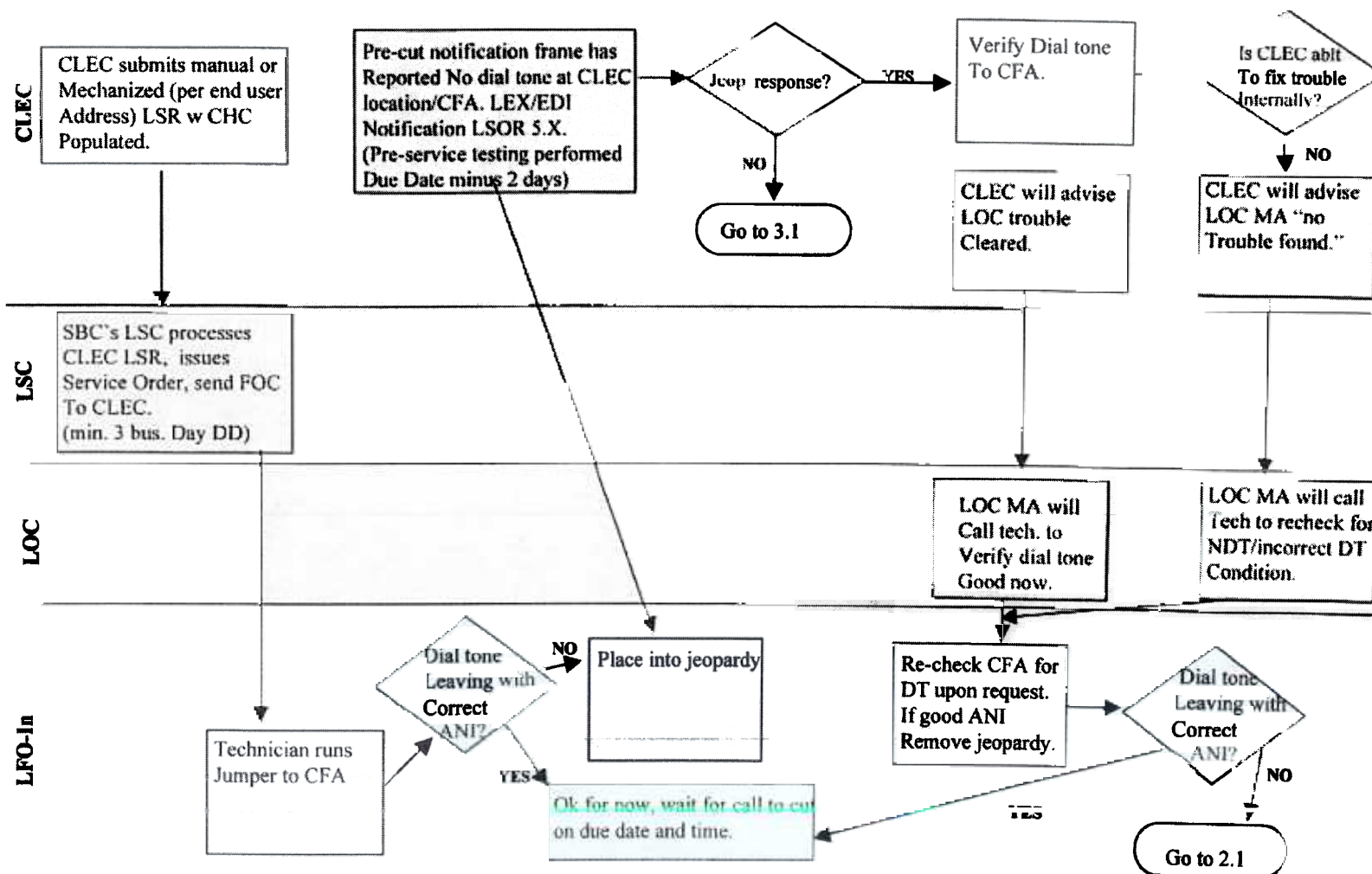
Version 1 (11/6/03)



Proposed Daily Batch Process (Pg 1) Southwest Region

Version 1 (11/4/03)

Pre-Cut Jeopardy Notification Process - CHC



CONFIDENTIAL

Proposed Daily Batch Process (Pg 2) Southwest Region

Version 1 (11/4/03)

Pre-Cut Jeopardy Notification Process - CHC

