



GRAND TOWER CROSSING PROJECT
PUBLIC ENGAGEMENT SUMMARY
PART 1: COMMUNITY REPRESENTATIVE FORUM

Table of Contents

Part 1.	Community Representative Forum	3
A.	Invitations to and Attendance by Missouri and Illinois Community Representatives	3
B.	Invitations to Community Representatives with Map Included	4
C.	Stakeholders Invited to Community Representative Forum.....	5
D.	Presentation for Community Representative Forum	7
E.	Community Representative Comment Form.....	16

Part 1. Community Representative Forum

A. Invitations to and Attendance by Missouri and Illinois Community Representatives

Schedule and Location of Community Representative Forum

Meeting Date	Meeting Time	Meeting Location
January 16, 2025	8:00 am – 9:30 am	Perryville Knights of Columbus 31 Church St. Perryville, MO 63775

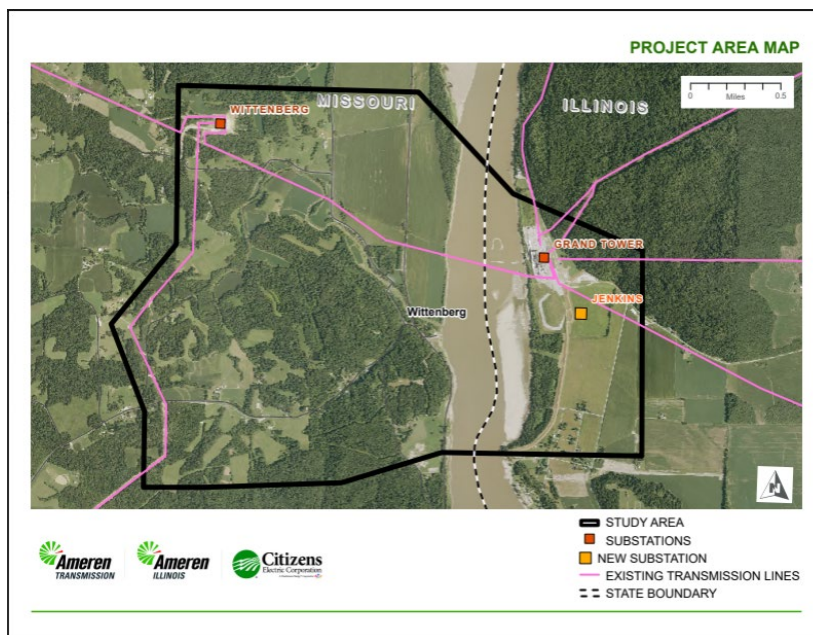
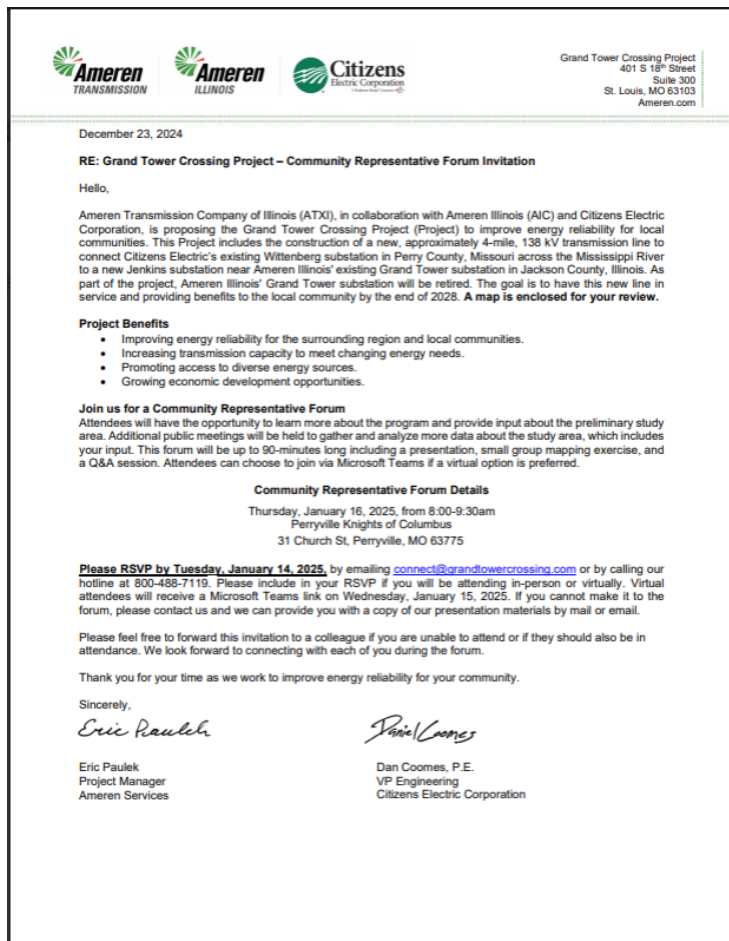
Number of Invitations to Community Representatives

Total Number of Invitations	50
Number of Invitations to Missouri Community Representatives	24

Number of Community Representative Attendees

Total Number of Attendees	14
Number of Missouri Attendees	8

B. Invitations to Community Representatives with Map Included



C. Stakeholders Invited to Community Representative Forum

<u>First Name</u>	<u>Last Name</u>	<u>Organization</u>	<u>Mailing Street</u>	<u>Mailing Street 2</u>	<u>Mailing City</u>	<u>State</u>	<u>Zip</u>
		NATURAL GAS PIPELINE COMPANY	500 DALLAS St	Suite 500	Houston	TX	77002
		HDR	401 S 18th St	Suite 300	St Louis	MO	63103
Bruce	Orman	Perry County	4803 N. Hwy. 51		Perryville	MO	63775
Bryant	Wolfen	Missouri House of Representatives	201 W Capitol Ave.	Room 306-A	Jefferson City	MO	65101
Catherine	Wright	Wittenberg Boat Club	4377 County Road 522		Jackson	MO	63755
Chuck	Miller	Missouri Cattlemen's Association	2306 Bluff Creek Dr		Columbia	MO	65201
Claire	Eubanks	Missouri Public Service Commission	PO Box 360		Jefferson City	MO	65102
Crystal	Jones	Perry County Economic Development Authority	508 N Main Street		Perryville	MO	63775
Deb	Thummel	Missouri Cattlemen's Association	2306 Bluff Creek Dr		Columbia	MO	65201
Derek	Miesner	Citizens Electric Corporation	1500 Rand Ave		Perryville	MO	63775
Donald	Fulford	Citizens Electric Corporation	1500 Rand Ave		Perryville	MO	63775
Dr. Fara	Jones	Perry County School District 32	326 College Street		Perryville	MO	63775
Eric	Schmitt	U.S. Senate	111 South 10th Street	Suite 23.305	St. Louis	MO	63102
Garrett	Hawkins	Missouri Farm Bureau	701 S. Country Club Dr		Jefferson City	MO	65109
Holly	Thompson Rehder	Missouri Senate	201 W. Capitol Ave	Rm 433	Jefferson City	MO	65101
Jared W.	Kutz	Perry County	321 N Main Street	Suite 2	Perryville	MO	63775
Jason	Smith	U.S. House of Representatives	2502 Tanner Drive,	Suite 205	Cape Girardeau	MO	63703
Josh	Hawley	U.S. Senate	555 Independence Street	Suite 1600	Cape Girardeau	MO	63703
Keith	Hoehn	Perry County	321 N Main Street	Suite 2	Perryville	MO	63775
Mark	Wengert	Citizens Electric Corporation	1500 Rand Ave		Perryville	MO	63775
Mark	Hoehn	Perry County	4803 N. Hwy. 51		Perryville	MO	63775
Mike	Deering	Missouri Cattlemen's Association	2306 Bluff Creek Dr		Columbia	MO	65201
Richard	DeWilde	Citizens Electric Corporation	1500 Rand Ave		Perryville	MO	63775
		Evangelical Lutheran Church	PO BOX 53		Altenburg	MO	63732
		Perry County Farm Bureau	21 W. Saint Joseph St.		Perryville	MO	63775

Andrew	Erbes	Jackson County	1001 Walnut Street		Murphysboro	IL	62966
Bill	Bodine	Illinois Farm Bureau	1701 Towanda Ave		Bloomington	IL	61701
Dale	Fowler	Illinois State Senate	2 North Vine	Suite 600	Harrisburg	IL	62946
Daniel	Bost	Jackson County	1001 Walnut Street		Murphysboro	IL	62966
Dick	Durbin	U.S. Senate	250 W. Cherry Street	Suite 115-D	Carbondale	IL	62901
Frank	Byrd	Jackson County	1001 Walnut Street		Murphysboro	IL	62966
John	Spring	Grand Tower Township	PO Box 235		Grand Tower	IL	62942
Laura	Harmon	Illinois Farm Bureau	1701 Towanda Ave		Bloomington	IL	61701
Matthew	Hickam	Regional Office of Education #30	1001 Walnut Street		Murphysboro	IL	62966
Mike	Bost	U.S. House of Representatives	1109 Chestnut Street		Murphysboro	IL	62966
Mitch	Burdick	Jackson County	1200 Enterprise Avenue		Murphysboro	IL	62966
Paul	Jacobs	Illinois House of Representatives	206 W. College	Suite 22	Carbondale	IL	62901
Robert	Burns	Jackson County	1001 Mulberry Street		Murphysboro	IL	62966
Tammy	Duckworth	U.S. Senate	441 East Willow Street		Carbondale	IL	62901
		City of Grand Tower	PO BOX 273		Grand Tower	IL	62942
		Devils Backbone Park and Campground	1 Brunkhorst Ave		Grand Tower	IL	62942
		Grand Tower City Hall	107 MARKET ST		Grand Tower	IL	62942
		GRAND TOWER ENERGY CTR, LLC	1820 POWER PLANT RD		Grand Tower	IL	62942
		Grand Tower Fire Department	620 Front ST	PO Box 281	GRAND TOWER	IL	62942
		Grand Tower Park District	PO BOX 11		Grand Tower	IL	62942
		Grand Tower Township	PO BOX 216		Grand Tower	IL	62942
		Grand Tower Township Supervisor	722 Main St		Grand Tower	IL	62942
		Jackson County Farm Bureau	220 N 10th St		Murphysboro	IL	62966
		NATURAL GAS PIPELINE COMPANY OF AMERICA	PO BOX 1207		LOMBARD	IL	60148




D. Presentation for Community Representative Forum

1

Hello!

The Grand Tower Crossing Project Virtual Meeting will begin shortly.

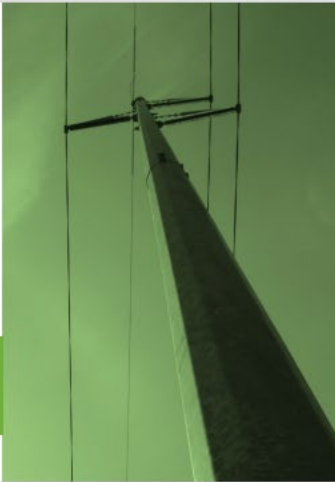
Please call 618.373.8568 if you have issues hearing any audio or seeing the screen.



GRAND TOWER CROSSING PROJECT



Community Representative Forum

January 16, 2025
8:00am – 9:30am




3


Welcome to Teams



Camera Mic






Chat



Please remain muted during the presentation. Questions will be answered after the presentation during the Q&A session.

Please use the chat to type in comments or questions throughout the session.

If you experience any technical difficulties, please call 618.373.8568



Schedule LD-01 Part 1



SAFETY MOMENT

WINTER WARNING AND WATCHES

- **WATCH:**
 - A winter storm may threaten a specific area but is not imminent.
- **WARNING:**
 - An advisory that a winter storm is expected to strike a specific area within 24 hours.
- **WINTER WEATHER ADVISORY:**
 - Winter weather conditions are expected to cause significant inconveniences and may be hazardous, especially to motorists.



Agenda



SAFETY MOMENT



Q&A



INTRODUCTIONS



MAPPING EXERCISE
(BREAKOUT SESSIONS)



PRESENTATION



WRAP-UP AND NEXT STEPS

5



Introductions

Project Roles



- Project development
- Stakeholder and public engagement
- Engineering
- Right-of-way
- Construction



- Routing
- Stakeholder and public engagement
- Environmental Studies and Permitting



- Expansion of the existing Wittenberg substation
- Develop local and regional transmission system for increased reliability to CEC member-owners

7



Project Partners

Citizens Electric Corporation, established in 1947, is a not-for-profit corporation operating as an electric cooperative located in Perryville, Missouri. Citizens Electric services over 27,000 members in Perry County, Ste. Genevieve County and portions of Cape Girardeau, Bollinger, Jefferson, and St. Francois County.



8



Project Overview

Grand Tower Crossing Project



Ameren Transmission Company of Illinois (ATXI), in collaboration with Citizens Electric Corporation, is proposing the Grand Tower Crossing Project (Project) to improve energy reliability for local communities. This Project includes the construction of a new, approximately 4-mile, 138 kV transmission line to connect Citizens Electric's existing Wittenberg substation in Perry County, Missouri across the Mississippi River to a new Jenkins substation near Ameren Illinois' existing Grand Tower substation in Jackson County, Illinois. As part of the project, Ameren Illinois' Grand Tower substation will be retired.



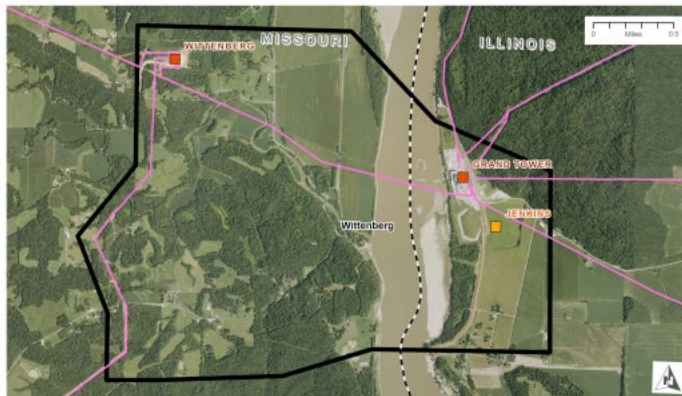
The new line will improve energy reliability for the surrounding region and local communities.



Our goal is to have this project completed and bringing project benefits to the local community by the end of 2028.



Study Area



- STUDY AREA
- SUBSTATIONS
- NEW SUBSTATION
- EXISTING TRANSMISSION LINES
- STATE BOUNDARY

Structures

Typical 138kV Steel Monopole Structures

- Structure: Single-shaft steel poles
- Voltage: 138 kV*
- Height: 80-140 ft
- Span: 800-900 ft
- Structures/mile: 6-8
- Conductor clearance: 25 ft (minimum)
- Drilled concrete pier foundation: 7-12 ft diameter
- Typical easement width: 150 ft
- *138 kV with the potential of a future 345 kV circuit

Note, that these graphics are not to scale. The number of arms on a typical structure and the sizing of the structure may vary depending on the final route.



Structures

River Crossing Structures

- Structure: Steel lattice towers or tubular towers
- Voltage: 138 kV*
- Height: 150-490 ft
- Span: 2800-4000 ft
- Structures/mile: 1-2
- Conductor clearance: 25 ft (minimum)
- Driven concrete and steel pile: 7-10 ft diameter
- Typical easement width: 600 ft
- *138 kV with the potential of a future 345 kV circuit

Note, that these graphics are not to scale. The number of arms on a typical structure and the sizing of the structure may vary depending on the final route.



River Crossing Visualization



Please note that this image is meant to serve as a visualization example for the Grand Tower Project's River Crossing. The type of structure, sizing, and number of arms is dependent upon the final route, span length, and structure loadings.

Routing + Public Involvement

Routing Process & Outreach



*All items shown are pending regulatory approvals.
Schedule is subject to change.



Data Collection



Routing Criteria

Our goal is to take advantage of Opportunities while understanding and minimizing impacts to Sensitivities and adhering to Technical Guidelines and Statutory Requirements.



Routing Criteria



OPPORTUNITIES

Linear features that are oriented in the direction of the project:

- Field lines
- Property lines
- Section lines
- Roads
- Utility corridors



SENSITIVITIES

Area resources or conditions that may require additional review and consideration:

- Agricultural conflicts
- Airports/VOR
- Cemeteries
- Communication Towers
- Conservation Areas/Nature Preserves
- Contaminated Areas
- Cultural/Historic Resources
- Planned Development (future)
- Floodplains (more difficult construction and many times have sensitive species)
- Forest/Grassland
- Hospitals
- Karst Areas
- Levees/Dams
- Mines/Quarries
- Pipelines*
- Railroads*
- Religious Facilities
- Residences (especially large clusters of homes)
- Scenic Highways
- Schools/Daycares
- Sensitive Crops
- Sensitive Species
- Streams/Wetlands
- Wells

*Linear features with additional precautions and studies needed

19



Routing Criteria

Technical Guidelines:

- Minimize length
- Ensure adequate access for construction and maintenance activities
- Comply with horizontal and vertical clearance requirements
- Maintain required or sufficient setbacks from roads and highways
- Minimize angle structures
- Minimize crossing of existing transmission lines
- Minimize impractical construction requirements
- Minimize non-standard designs
- Ensure safety and compatibility with existing infrastructure

20



Prelim. Corridor

- STUDY AREA
- PRELIMINARY CORRIDORS
- EXISTING SUBSTATIONS
- NEW SUBSTATION
- EXISTING TRANSMISSION LINES
- - - STATE BOUNDARY
- PARCEL
- RESIDENCE
- NOT A HOME
- CHURCH OR CEMETERY
- CAMPGROUND
- COMMUNICATION TOWER
- PIPELINE
- RAILROAD
- *** LEVEE
- STREAM



21



QUESTIONS?



MAPPING
DISCUSSION

Breakout Groups

Wrap Up and Next Steps

? Additional discussion / Q&A

Let our team know if you have any additional feedback by emailing the project email at:

connect@grandtowercrossing.com

Upcoming Engagement Opportunities

IN PERSON OPEN HOUSE

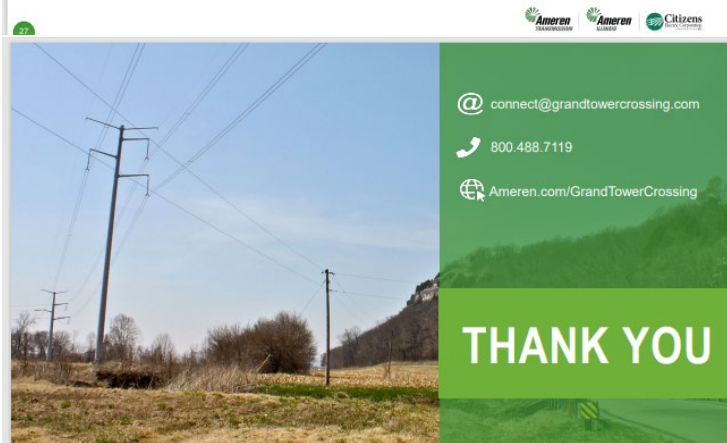
Thursday, January 16, 2025
11:00 AM – 1:00 PM
and 5:00 PM – 7:00 PM

Perryville Knights of Columbus
31 Church St
Perryville, MO 63775

All Winona and Missouri community members are welcome. Both open houses will include the same information, with no formal presentation. Come and go as you please during the two-hour window. Visit the website to learn more about the project and provide feedback.

VIRTUAL ENGAGEMENT AVAILABLE

We will also have a self-paced, virtual engagement and comment map available on the website starting January 13, 2025.



@ connect@grandtowercrossing.com

800.488.7119

Ameren.com/GrandTowerCrossing

THANK YOU

