



GRAND TOWER CROSSING PROJECT
PUBLIC ENGAGEMENT SUMMARY
PART 2: PHASE 1 OPEN HOUSES

Table of Contents

Part 2. In-Person Engagement Phase 1: Perryville Open Houses	3
A. Summary Data and Results	3
B. Open House Notifications	4
1. Postcard Invitations to Landowners and Stakeholders in the Study Area	4
2. Invitations to Perry and Jackson County Clerks	5
3. Invitations to Missouri Public Service Commission and Illinois Commerce Commission.....	6
4. Enclosures Sent with Notifications and Invitations	7
5. Missouri and Illinois Stakeholders Invited	8
6. Newspaper Advertisements in Missouri and Illinois	9
7. Ameren Press Release.....	10
C. Materials Used at Open Houses	11
1. Boards.....	11
2. Fact Sheets.....	16
3. River Crossing Visualization	17
4. Routing Criteria Card.....	18
5. Comment Form	19

Part 2. In-Person Engagement Phase 1: Perryville Open Houses

A. Summary Data and Results

Schedule and Location of Open Houses

Meeting Date	Meeting Times	Meeting Location
January 16, 2025	11am-1 pm and 5 pm-7 pm	Perryville Knights of Columbus 31 Church St. Perryville, MO 63775

Newspaper Advertisements and Publication Dates Announcing Open Houses

Newspaper	Ad 1 Run Date	Ad 2 Run Date	Ad 3 Run Date
Southeast Missourian	December 28, 2024	January 4, 2025	January 9, 2025
Republican Monitor	December 26, 2024	January 2, 2025	January 9, 2025
Southern Illinoisan	December 26, 2024	January 2, 2025	January 9, 2025

Postcard Invitations Sent to Landowners and Stakeholders in Study Area

	Number of Postcards Mailed	Date of Mailing
All Landowners & Stakeholders	151	December 30, 2024
Missouri Landowners & Stakeholders	78	December 30, 2024

Open House Attendance (Number of Persons Who Signed In)

	11 a.m. to 1 p.m.	5 p.m. to 7 p.m.	Total Attendees
Total Attendance	9	1	10
Missouri Attendees	7	1	8

Public Comments at Perryville Open Houses

	Public Comments
Comment Forms	1
GIS, Tabletop Comments	12
Total Public Comments	13

1. Postcard Invitations to Landowners and Stakeholders in the Study Area

PRECORRATED
Standard Rail
Steel Joist
Paving
B. Load, Mo.
Permit No. 1007

Ameren
Missouri
Ameren
Arkansas
Citizens
Electric

GRAND TOWER CROSSING PROJECT

Attn: HDR
401 S 380 Street
Carmichael, MO 63103
St. Louis, MO 63103

We'd like to connect with you about
the Grand Tower Crossing Project.
Open this notice to learn more.

connect@GrandTowerCrossing.com
1.800.488.7119
Ameren.com/GrandTowerCrossing

PROJECT LOCATION MAP

STUDY AREA
SUBSTATIONS
== STATE BOUNDARY
■ NEW SUBSTATION

GRAND TOWER CROSSING PROJECT

Ameren Transmission Company of Illinois (ATXI), in collaboration with Ameren Illinois (AIC) and Citizens Electric Corporation, is proposing the Grand Tower Crossing Project (Project) to improve energy reliability for local communities. This Project includes the construction of a new, approximately 4-mile, 138 kV transmission line to connect Citizens Electric's existing Wittenberg substation in Perry County, Missouri across the Mississippi River to a new Jenkins substation near Ameren Illinois' existing Grand Tower substation in Jackson County, Illinois. As part of the project, Ameren Illinois' Grand Tower substation will be retired. The goal is to have this new line in service and providing benefits to the local community by the end of 2028.

PROJECT BENEFITS

Improving energy reliability for the surrounding region and local communities.

Increasing transmission capacity to meet changing energy needs.

Promoting access to diverse energy sources.

Growing economic development opportunities.

WE NEED YOUR INPUT

We look forward to connecting with community members, landowners and stakeholders to learn as much as we can about your area to help us develop this project. Thank you for your time and feedback as we work to improve energy reliability for your community.

IN PERSON OPEN HOUSE

We welcome your attendance at our in person open house.

All Illinois and Missouri community members are welcome. Both open houses will include the same information, with no formal presentation. Come and go as you please during the two-hour window.

JANUARY 2025

1	2	3	4
5	6	7	8
9	10	11	12
13	14	15	16
17	18	19	20
21	22	23	24
25	26	27	28
29	30	31	

Thursday, January 16, 2025
11:00 AM – 1:00 PM
 and **5:00 PM – 7:00 PM**

Perryville Knights of Columbus
 31 Church St
 Perryville, MO 63775

VIRTUAL ENGAGEMENT

Explore our self-paced virtual engagement and provide your comments directly on our interactive map through our website at www.amerem.com/GrandTowerCrossing starting January 13, 2025.




Visit the website to learn more about the project and provide feedback.

Ameren.com/GrandTowerCrossing

connect@GrandTowerCrossing.com

1.800.481.7119

2. Invitations to Perry and Jackson County Clerks

  	Grand Tower Crossing Project 401 S 18 th Street Suite 300 St. Louis, MO 63103 Ameren.com
---	---

December 31, 2024

Jared Kutz
County Clerk
Perry County, MO
321 N Main St, Suite 2
Perryville, MO 63775

RE: Grand Tower Crossing Project
Notice of in-person public open houses and virtual engagement

Hello,

Ameren Transmission Company of Illinois (ATXI), in collaboration with Ameren Illinois (AIC) and Citizens Electric Corporation, hereby provides notice to the Perry County Clerk of scheduled engagement for the Grand Tower Crossing Project. In-person open houses are scheduled on Thursday, January 16 from 11:00am – 1:00pm and from 5:00-7:00pm at the Perryville Knights of Columbus Hall, 31 Church Street in Perryville, MO 63775. For those unable to attend the in-person open houses, a self-paced, online open house and interactive comment map will be available on the project website starting January 13, 2025.

The enclosed advertisement will run once a week for three consecutive weeks in the Southeast Missourian and Republic Monitor. A list of publication dates is below.

Newspaper	Ad #1 Run Date	Ad #2 Run Date	Ad #3 Run Date
The Republic Monitor	12/26	1/2	1/9
The Southeast Missourian	12/28	1/4	1/9

About the Project
Ameren Transmission Company of Illinois (ATXI), in collaboration with Ameren Illinois (AIC) and Citizens Electric Corporation, is proposing the Grand Tower Crossing Project (Project) to improve energy reliability for local communities. This Project includes the construction of a new, approximately 4-mile, 138 kV transmission line to connect Citizens Electric's existing Wittenberg substation in Perry County, Missouri across the Mississippi River to a new Jenkins substation near Ameren Illinois' existing Grand Tower substation in Jackson County, Illinois. As part of the project, Ameren Illinois' Grand Tower substation will be retired. The goal is to have this new line in service and providing benefits to the local community by the end of 2028. **A map is enclosed for your review.**


Project Benefits


- Improving energy reliability for the surrounding region and local communities.
- Increasing transmission capacity to meet changing energy needs.
- Promoting access to diverse energy sources.
- Growing economic development opportunities.

Contact our Team
For additional information, visit our website at Ameren.com/GrandTowerCrossing, send us an email at connect@grandtowercrossing.com or leave us a message on our project at 1.800-488-7119.

Thank you for your time as we work to improve energy reliability for your community.

Sincerely,


Eric Paulek
Project Manager
Ameren Services


Dan Coomes, P.E.
VP Engineering
Citizens Electric Corporation

  	Grand Tower Crossing Project 401 S 18 th Street Suite 300 St. Louis, MO 63103 Ameren.com
---	---

December 31, 2024

Frank Byrd
County Clerk
Jackson County, IL
1001 Walnut St
Murphysboro, IL 62966

RE: Grand Tower Crossing Project
Notice of in-person public open houses and virtual engagement

Hello,

Ameren Transmission Company of Illinois (ATXI), in collaboration with Ameren Illinois (AIC) and Citizens Electric Corporation, hereby provides notice to the Jackson County Clerk of scheduled engagement for the Grand Tower Crossing Project. In-person open houses are scheduled on Thursday, January 16 from 11:00am – 1:00pm and from 5:00-7:00pm at the Perryville Knights of Columbus Hall, 31 Church Street in Perryville, MO 63775. For those unable to attend the in-person open houses, a self-paced, online open house and interactive comment map will be available on the project website starting January 13, 2025. A copy of the advertisement to be published in The Southern Illinoisan on December 26, January 2, and January 9 is enclosed.

About the Project
Ameren Transmission Company of Illinois (ATXI), in collaboration with Ameren Illinois (AIC) and Citizens Electric Corporation, is proposing the Grand Tower Crossing Project (Project) to improve energy reliability for local communities. This Project includes the construction of a new, approximately 4-mile, 138 kV transmission line to connect Citizens Electric's existing Wittenberg substation in Perry County, Missouri across the Mississippi River to a new Jenkins substation near Ameren Illinois' existing Grand Tower substation in Jackson County, Illinois. As part of the project, Ameren Illinois' Grand Tower substation will be retired. The goal is to have this new line in service and providing benefits to the local community by the end of 2028. **A map is enclosed for your review.**

Project Benefits

- Improving energy reliability for the surrounding region and local communities.
- Increasing transmission capacity to meet changing energy needs.
- Promoting access to diverse energy sources.
- Growing economic development opportunities.

Contact our Team
For additional information, visit our website at Ameren.com/GrandTowerCrossing, send us an email at connect@grandtowercrossing.com or leave us a message on our project at 1.800-488-7119.




Thank you for your time as we work to improve energy reliability for your community.

Sincerely,


Eric Paulek
Project Manager
Ameren Services


Dan Coomes, P.E.
VP Engineering
Citizens Electric Corporation

3. Invitations to Missouri Public Service Commission and Illinois Commerce Commission



Grand Tower Crossing Project
401 S 18th Street
Suite 300
St. Louis, MO 63103
Ameren.com

December 31, 2024

RE: Grand Tower Crossing Project
Notice of in-person public open houses and virtual engagement

Hello,

Ameren Transmission Company of Illinois (ATXI), in collaboration with Ameren Illinois (AIC) and Citizens Electric Corporation, is proposing the Grand Tower Crossing Project (Project) to improve energy reliability for local communities. This Project includes the construction of a new, approximately 4-mile, 138 kV transmission line to connect Citizens Electric's existing Wittenberg substation in Perry County, Missouri across the Mississippi River to a new Jenkins substation near Ameren Illinois' existing Grand Tower substation in Jackson County, Illinois. As part of the project, Ameren Illinois' Grand Tower substation will be retired. The goal is to have this new line in service and providing benefits to the local community by the end of 2028. **A map is enclosed for your review.**

We are engaging community members, landowners and stakeholders to provide an opportunity for them to learn more about the project and provide input. We look forward to gathering the public's input to understand the program area from the community's perspective. Maps will be available for review and comment during the engagement opportunities.

In-person open houses are scheduled on Thursday, January 16 from 11:00am – 1:00pm and from 5:00-7:00pm at the Perryville Knights of Columbus Hall, 31 Church Street in Perryville, MO 63775. For those unable to attend the in-person open houses, a self-paced, online open house and interactive comment map will be available on the project website starting January 13, 2025.

The enclosed advertisement will run once a week for three consecutive weeks in the Southeast Missourian and Republic Monitor. A list of publication dates is below.

Newspaper	Ad #1 Run Date	Ad #2 Run Date	Ad #3 Run Date
The Republic Monitor	12/26	1/2	1/9
The Southeast Missourian	12/28	1/4	1/9


Project Benefits


- Improving energy reliability for the surrounding region and local communities.
- Increasing transmission capacity to meet changing energy needs.
- Promoting access to diverse energy sources.
- Growing economic development opportunities.




Contact our Team
For additional information, visit our website at Ameren.com/GrandTowerCrossing send us an email at connect@grandtowercrossing.com or leave us a message on our project at 1.800-488-7119.

Thank you in advance for your time and consideration.

Sincerely,


Eric Paulek
Project Manager
Ameren Services


Dan Coomes, P.E.
VP Engineering
Citizens Electric Corporation



Grand Tower Crossing Project
401 S 18th Street
Suite 300
St. Louis, MO 63103
Ameren.com

December 30, 2024

RE: Grand Tower Crossing Project
Notice of in-person public open houses and virtual engagement

Hello,

Ameren Transmission Company of Illinois (ATXI), in collaboration with Ameren Illinois (AIC) and Citizens Electric Corporation, is proposing the Grand Tower Crossing Project (Project) to improve energy reliability for local communities. This Project includes the construction of a new, approximately 4-mile, 138 kV transmission line to connect Citizens Electric's existing Wittenberg substation in Perry County, Missouri across the Mississippi River to a new Jenkins substation near Ameren Illinois' existing Grand Tower substation in Jackson County, Illinois. As part of the project, Ameren Illinois' Grand Tower substation will be retired. The goal is to have this new line in service and providing benefits to the local community by the end of 2028. **A map is enclosed for your review.**

We are engaging community members, landowners and stakeholders to provide an opportunity for them to learn more about the project and provide input. We look forward to gathering the public's input to understand the program area from the community's perspective. Maps will be available for review and comment during the engagement opportunities.

In-person open houses are scheduled on Thursday, January 16 from 11:00am – 1:00pm and from 5:00-7:00pm at the Perryville Knights of Columbus Hall, 31 Church Street in Perryville, MO 63775. For those unable to attend the in-person open houses, a self-paced, online open house and interactive comment map will be available on the project website starting January 13, 2025. A copy of the advertisement to be published in The Southern Illinoisian on December 26, January 2, and January 9 is enclosed.


Project Benefits

- Improving energy reliability for the surrounding region and local communities.
- Increasing transmission capacity to meet changing energy needs.
- Promoting access to diverse energy sources.
- Growing economic development opportunities.

Contact our Team
For additional information, visit our website at Ameren.com/GrandTowerCrossing send us an email at connect@grandtowercrossing.com or leave us a message on our project at 1.800-488-7119.

Thank you in advance for your time and consideration.

Sincerely,


Eric Paulek
Project Manager
Ameren Services


Dan Coomes, P.E.
VP Engineering
Citizens Electric Corporation

4. Enclosures Sent with Notifications and Invitations

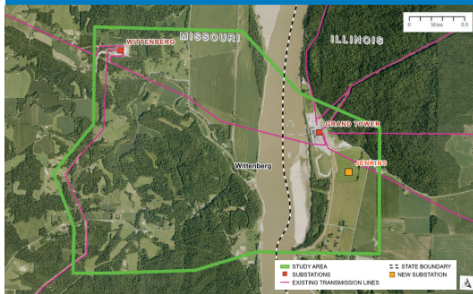


Ameren Transmission Company of Illinois (ATXI), in collaboration with Ameren Illinois (AIC) and Citizens Electric Corporation, is proposing the Grand Tower Crossing Project (Project) to improve energy reliability for local communities. This Project includes the construction of a new, approximately 4-mile, 138 kV transmission line to connect Citizens Electric's existing Wittenberg substation in Perry County, Missouri across the Mississippi River to a new Jenkins substation near Ameren Illinois' existing Grand Tower substation in Jackson County, Illinois. As part of the project, Ameren Illinois' Grand Tower substation will be retired. The goal is to have this new line in service and providing benefits to the local community by the end of 2028.

PROJECT BENEFITS

- Improving energy reliability for the surrounding region and local communities.
- Promoting access to diverse energy sources.
- Increasing transmission capacity to meet changing energy needs.
- Growing economic development opportunities.

PROJECT LOCATION MAP



IN PERSON OPEN HOUSE



Thursday, January 16, 2025
11:00 AM – 1:00 PM
and 5:00 PM – 7:00 PM



Perryville Knights of Columbus
31 Church St
Perryville, MO 63775

All Illinois and Missouri community members are welcome. Both open houses will include the same information, with no formal presentation. Come and go as you please during the two-hour window. Visit the website to learn more about the project and provide feedback.

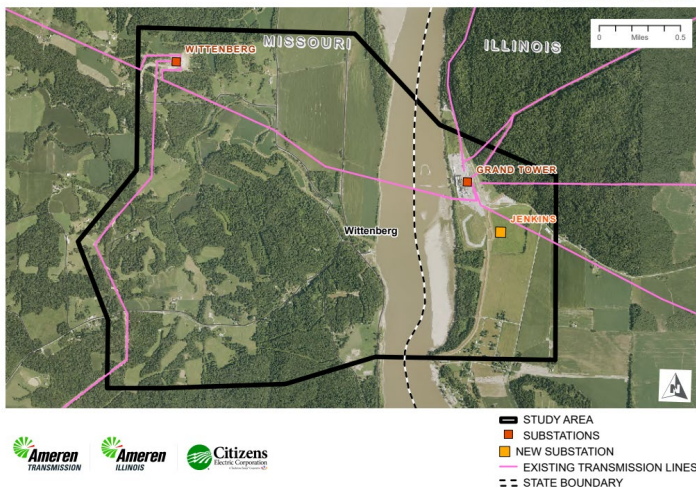
VIRTUAL ENGAGEMENT AVAILABLE

Starting January 13, 2025

We will also have a self-paced, virtual engagement and comment map available on the website starting January 13, 2025.

[Ameren.com/GrandTowerCrossing](https://ameren.com/GrandTowerCrossing)
connect@grandtowercrossing.com 800.488.7119

PROJECT AREA MAP



5. Missouri and Illinois Stakeholders Invited

The same set of stakeholders invited to the Community Representative Forum was sent notice of the Phase 1 Open Houses in Perryville, MO. See Part 1.

6. Newspaper Advertisements in Missouri and Illinois



Ameren Transmission Company of Illinois (ATXI), in collaboration with Ameren Illinois (AIC) and Citizens Electric Corporation, is proposing the Grand Tower Crossing Project (Project) to improve energy reliability for local communities. This Project includes the construction of a new, approximately 4-mile, 138 kV transmission line to connect Citizens Electric's existing Wittenberg substation in Perry County, Missouri across the Mississippi River to a new Jenkins substation near Ameren Illinois' existing Grand Tower substation in Jackson County, Illinois. As part of the project, Ameren Illinois' Grand Tower substation will be retired. The goal is to have this new line in service and providing benefits to the local community by the end of 2028.

PROJECT BENEFITS

- Improving energy reliability for the surrounding region and local communities.
- Increasing transmission capacity to meet changing energy needs.
- Promoting access to diverse energy sources.
- Growing economic development opportunities.

PROJECT LOCATION MAP



IN PERSON OPEN HOUSE



Thursday, January 16, 2025
11:00 AM – 1:00 PM
and 5:00 PM – 7:00 PM



Perryville Knights of Columbus
31 Church St
Perryville, MO 63775

All Illinois and Missouri community members are welcome. Both open houses will include the same information, with no formal presentation. Come and go as you please during the two-hour window.

Visit the website to learn more about the project and provide feedback.

VIRTUAL ENGAGEMENT AVAILABLE

Starting January 13, 2025

We will also have a self-paced, virtual engagement and comment map available on the website starting January 13, 2025.

Ameren.com/GrandTowerCrossing
connect@grandtowercrossing.com 800.488.7119

Publication:
Southeast Missourian

Publication Dates:
December 28, 2024
January 4, 2025
January 9, 2025


Publication:
Republican Monitor

Publication Dates:
December 26, 2024
January 2, 2025
January 9, 2025

Publication:
Southern Illinoisan

Publication Dates:
December 26, 2024
January 2, 2025
January 9, 2025

7. Ameren Press Release



2801 Chestnut Avenue
St. Louis, MO 63103
Ameren.com

Contact:
Ameren Communications
314.554.2152
communications@ameren.com

FOR IMMEDIATE RELEASE

Ameren Transmission hosts open houses for public input on Grand Tower Crossing Project

ST. LOUIS (Jan. 14, 2025) – Ameren Transmission, in collaboration with Ameren Illinois and Citizens Electric Corporation, is proposing the Grand Tower Crossing Project to build a more reliable and resilient energy grid and is hosting public open houses this week to gather input from local stakeholders. The in-person open houses will take place in Perryville, Missouri.

The open house is set for 11 a.m. to 1 p.m. and 8 p.m. to 7 p.m. Thursday, Jan. 16, at Perryville Knights of Columbus, 51 Church Street, Perryville. More details are available at Ameren.com/GrandTowerCrossing.

The Grand Tower Crossing Project includes the construction of a new, approximately 4 mile, 138-kV transmission line to connect an existing Citizens Electric substation in Perry County, Missouri, across the Mississippi River to a new substation in Jackson County, Illinois. The goal is to have the new transmission line in service and providing benefits to the community by the end of 2026.

"The Grand Tower Crossing Project will help the members of Citizens Electric by improving system reliability and increasing transmission capacity for our 27,000 members, creating a stronger and more resilient electric network and providing long-term benefits for the electric needs of our local members," said Daniel Goines, Vice President of Engineering for Citizens Electric Corporation. "These investments will benefit the entire community."

During each open house, the Grand Tower Crossing Project team will include project overview information and an opportunity to provide input. Both open house sessions will include the same information with no formal presentation. There will also be a self-paced, virtual engagement and comment map available starting Jan. 13.


"These open house sessions are a critical step in our planning and routing process, and we value feedback from the community," said Eric Paulik, project manager for the Grand Tower Crossing Project. "We hope interested members of the public will join us to learn more about the project, ask questions and share their feedback so we can take into account any needs and concerns from the community."

Additional information is available on the project's website at Ameren.com/GrandTowerCrossing, by sending an email to project@openhouseameren.com or by calling the project hotline at 800.496.7116.

About Ameren Corporation
St. Louis-based Ameren Corporation powers the quality of life for 2.4 million electric customers and more than 900,000 natural gas customers in a 64,000-square-mile area through its Ameren Missouri and Ameren Illinois rate-regulated utility subsidiaries. Ameren Illinois provides electric transmission and distribution service and natural gas distribution service. Ameren Missouri provides electric generation, transmission, and distribution service, as well as natural gas distribution service. Ameren Transmission Company of Illinois develops, owns and operates rate-regulated regional electric transmission projects. For more information, visit Ameren.com, or follow us @AmerenCorp, Facebook.com/AmerenCorp, or LinkedIn.com/company/Ameren.

C. Materials Used at Open Houses


1. Boards




WELCOME TO OUR OPEN HOUSE!

Grand Tower Crossing Project


GOAL OF TODAY'S OPEN HOUSE:




Learn more about the project






See what's happening in your area




Provide feedback and input to the project team



We look forward to connecting with community members, landowners and stakeholders to learn as much as we can about your area to help us develop this project. Thank you for your time and feedback as we work to improve energy reliability for your community.







ABOUT THE PROJECT

Grand Tower Crossing Project

Ameren Transmission Company of Illinois (ATXI), in collaboration with Ameren Illinois (AIC) and Citizens Electric Corporation, is proposing the Grand Tower Crossing Project (Project) to improve energy reliability for local communities. This Project includes the construction of a new, approximately 4-mile, 138 kV transmission line to connect Citizens Electric's existing Wittenberg substation in Perry County, Missouri across the Mississippi River to a new Jenkins substation near Ameren Illinois' existing Grand Tower substation in Jackson County, Illinois. As part of the project, Ameren Illinois' Grand Tower substation will be retired. The goal is to have this new line in service and providing benefits to the local community by the end of 2028.



STUDY AREA
SUBSTATIONS
EXISTING TRANSMISSION LINES
STATE BOUNDARY
NEW SUBSTATION





WHAT IS ENERGY RELIABILITY?

Our energy grid is similar to our road system in the way they allow energy from generation sources to travel short or long distances, as needed, at any given moment. On the road, when your main route is closed for construction, you review your options and find an alternative. In some cases, alternatives just don't exist, or they can't handle the increased traffic and users experience backups.

The energy grid is no different! If a large storm were to take out multiple transmission or distribution lines or "routes" in your area, local homes and businesses would be served by a lower capacity which could lead to reliability issues in the area.



Grand Tower Crossing Project



GRAND TOWER CROSSING PROJECT ANTICIPATED SCHEDULE

- FALL 2024 THROUGH EARLY 2025**
Project planning, routing, and stakeholder/public engagement
- EARLY 2025 THROUGH SPRING 2025**
Finalize route and file application with Missouri Public Service Commission (MoPSC)
- FALL 2025 THROUGH WINTER 2027**
 - » Receive a Certificate of Convenience and Necessity (CCN) decision from the MoPSC
 - » Permitting and agency coordination
 - » Environmental studies/surveys
 - » Pre-construction Activities
 - » Real estate
- WINTER 2027 THROUGH 2028**
Construction begins
- LATE 2028**
Projects in service
- EARLY 2029**
Restoration complete





FULFILLING A NEED

Grand Tower Crossing Project

The project will prepare the grid for the future by replacing aging infrastructure, adding transmission capacity to ensure energy **reliability and resiliency**, and promoting more access to energy sources for communities.



Improving energy reliability for the surrounding region and local communities.



Promoting access to diverse energy sources.



Increasing transmission capacity to meet changing energy needs.



Growing economic development opportunities.



CONSTRUCTION

CONSTRUCTION WILL BEGIN IN 2027

Grand Tower Crossing Project

Transmission line construction is completed in intermittent phases and will not be constant on landowner property. We will provide more information before construction begins on any landowner property. On most structures, there will be six major stages of construction including:



1 Surveys, soil borings, vegetation management and access roads



2 Assemble structure on the ground



3 Dig structure holes



4 Lift structure into hole and backfill with concrete



5 String wires



6 Energize line and restore easement





VEGETATION MANAGEMENT

Grand Tower Crossing Project

Safety and reliability are the driving factors behind managing trees, and other forms of vegetation, around our transmission lines. Trees and other vegetation can damage the line and hinder our ability to deliver electric services safely and reliably. They can make the job of storm restoration more difficult, extend restoration times and pose additional hazards to line crews.

To protect the public and reduce the risk of extended power outages, Ameren has a vegetation management program designed to ensure proper clearances around the lines as required by federal and state agencies. The program reduces the potential for damage and allows access for crews to maintain and repair transmission equipment.



This vegetation management work may include:



Inspections



Mowing



Manual and Aerial Trimming

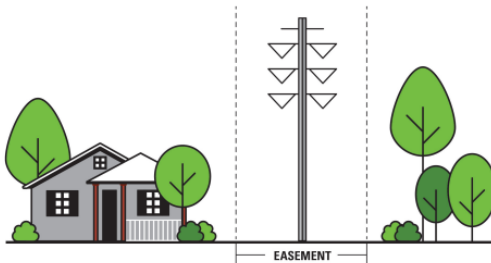


REAL ESTATE

Grand Tower Crossing Project

Ameren's real estate team will have several land agents assisting landowners during the entire real estate process. Discussions with landowners will include topics such as:

- ✓ Land surveys and studies
- ✓ Access roads
- ✓ Structure/line design
- ✓ Right-of-way clearing
- ✓ Compensation
- ✓ Property restoration



EASEMENTS

Easements allow our team access for construction, operation and maintenance of the transmission line. In general, the land can continue to be used as before, provided that the use does not interfere with the transmission line.



VISUALIZATION OF GRAND TOWER RIVER CROSSING

Grand Tower Crossing Project

ROUTE CORRIDORS

Grand Tower Crossing Project

WE VALUE YOUR INPUT

Grand Tower Crossing Project

COMMENT FORM

Submit a comment form today or email/mail it to us later.

VIRTUAL ENGAGEMENT

Review similar information from today's open house.

ONLINE COMMENT MAP

Submit a comment on our online comment map.

PROGRAM WEBSITE

Learn more at Ameren.com/GrandTowerCrossing

CONTACT US

1.800.488.7119 connect@grandtowercrossing.com

2. Fact Sheets

Grand Tower Crossing Project

Ameren Transmission Company of Illinois (ATXI), in collaboration with Ameren Illinois (AIC) and Citizens Electric Corporation, is proposing the Grand Tower Crossing Project (Project) to improve energy reliability for local communities. This Project includes the construction of a new, approximately 4-mile, 138 KV transmission line to connect Citizens Electric's existing Wittenberg substation in Perry County, Missouri across the Mississippi River to a new Jenkins substation near Ameren Illinois' existing Grand Tower substation in Jackson County, Illinois. As part of the project, Ameren Illinois' Grand Tower substation will be retired. The goal is to have this new line in service and providing benefits to the local community by the end of 2028.

FULFILLING A NEED

The project will prepare the grid for the future by replacing aging infrastructure, adding transmission capacity to ensure energy reliability and resiliency, and promoting more access to energy sources for communities.

- Improving energy reliability for the surrounding region and local communities.
- Increasing transmission capacity to meet changing energy needs.
- Promoting access to diverse energy sources.
- Growing economic development opportunities.

ANTICIPATED SCHEDULE

FALL 2024 THROUGH EARLY 2025
Project planning, routing, and stakeholder/public engagement

EARLY 2025 THROUGH SPRING 2025
Finalize route and file application with Missouri Public Service Commission (MoPSC)

FALL 2025 THROUGH WINTER 2027

- Receive a Certificate of Convenience and Necessity (CCN) decision from the MoPSC
- Permitting and agency coordination
- Environmental studies/surveys
- Real estate
- Pre-construction activities

WINTER 2027 THROUGH 2028
Construction begins

LATE 2028
Projects in service

EARLY 2029
Restoration complete

*All items shown are pending regulatory approvals. Schedule is subject to change.

PROJECT LOCATION

STUDY AREA
SUBSTATIONS
EXISTING TRANSMISSION LINES
STATE BOUNDARY
NEW SUBSTATION

Grand Tower Crossing Project

CONSTRUCTION WILL BEGIN IN 2027

Transmission line construction is completed in intermittent phases and will not be constant on landowner property. We will provide more information before construction begins on any landowner property. On most structures, there will be six major stages of construction including:

1. Surveys, soil borings, vegetation management and access roads
2. Assemble structure on the ground
3. Dig structure holes
4. Lift structure into hole and backfill with concrete
5. String wires
6. Energize line and restore easement

ROUTE CORRIDORS

STUDY AREA
SUBSTATIONS
NEW SUBSTATION
PRELIMINARY CORRIDORS
EXISTING TRANSMISSION LINES
PIPELINE
PARCEL
WETLANDS AND WATER
STATE BOUNDARY
CAMPGROUND
CHURCH OR CEMETERY

DISCLAIMER: The information provided on this map is for discussion purposes only. Ameren Transmission Company of Illinois (ATXI) and Ameren Illinois is not bound in any way to the representations reflected on this map. This map does not represent a final determination by Ameren Illinois and ATXI as to route selection, and Ameren Illinois and ATXI is not restricted or barred from modifying or deviating from the routes proposed, or considering new or different routes.

VIRTUAL ENGAGEMENT

Scan this QR code with your smartphone to explore our self-paced, virtual engagement and comment map. Visit the website to see additional engagement opportunities in the program area.

Ameren.com/GrandTowerCrossing connect@grandtowercrossing.com 1.800.488.7119

3. River Crossing Visualization



Please note that this image is meant to serve as a visualization example for the Grand Tower Project's River Crossing. The type of structure, sizing, and number of arms is dependent upon the final route, span length, and structure loadings.

4. Routing Criteria Card

Grand Tower Crossing Project

ROUTING CRITERIA



WE NEED YOUR INPUT!

Help us identify Opportunities and Sensitivities within the project area by working with a project team member to call them out on the map.

- Can you point out any opportunities/sensitivities?
- Do any areas stand out as potential issues?
- Are there any future developments or land use changes planned?
- Do you see any opportunities that may provide good corridors or routing areas?
- Do you know of any organizations or active community groups/HOAs we should connect with?
- Are there any safety concerns our project team should be aware of?



OPPORTUNITIES

Linear features that are oriented in the direction of the project:

- Field lines
- Property lines
- Section lines
- Roads
- Utility corridors



SENSITIVITIES

Area resources or conditions that may require additional review and consideration:

<ul style="list-style-type: none">• Agricultural conflicts• Airports/VOR• Cemeteries• Communication Towers• Conservation Areas/Nature Preserves• Contaminated Areas• Cultural/Historic Resources• Planned Development (future)• Floodplains (more difficult construction and many times have sensitive species)	<ul style="list-style-type: none">• Forest/Grassland• Hospitals• IL DNR Resource Lands• IL DNR State Parks• Karst Areas• Levees/Dams• Mines/Quarries• Pipelines*• Railroads*• Religious Facilities	<ul style="list-style-type: none">• Residences (especially large clusters of homes)• Scenic Highways• Schools/Daycares• Sensitive Crops• Sensitive Species• Streams/Wetlands• Wells
---	---	---

*Linear features with additional precautions and studies needed

Grand Tower Crossing Project

Grand Tower Crossing Project

Name: _____

Address: _____

City: _____ State: _____ Zip: _____

County: _____

Phone: _____ Email: _____

Comment:

[illegible]

For further information or to provide additional input, please visit www.Ameren.com/GrandTowerCrossing

Grand Tower Crossing Project

Grand Tower Crossing Project

HOW TO SUBMIT COMMENT:

- Grand Tower Crossing Project
c/o HDR
401 S. 18th Street, Suite 300
St. Louis, MO 63103

- For further information or to provide additional input, please visit www.Ameren.com/GrandTowerCrossing