



GRAND TOWER CROSSING PROJECT
PUBLIC ENGAGEMENT SUMMARY
PART 4: ONLINE AND OTHER PUBLIC ENGAGEMENT

Table of Contents

Part 4. Online and Other Sources of Engagement	3
A. Engagement via Ameren Program Web Site and Other Sources	3
B. Virtual Open House Engagement Measures.....	5
C. Phase 1 Web Site Screen Shots	7
D. Phase 1 Project Area Map Posted at Website	9
E. Phase 1 Interactive Map Screen Shots.....	10
F. Phase 2 Website and Project Map Screenshots	12
G. Phase 2 Interactive Map Screenshots.....	14

Part 4. Online and Other Sources of Engagement

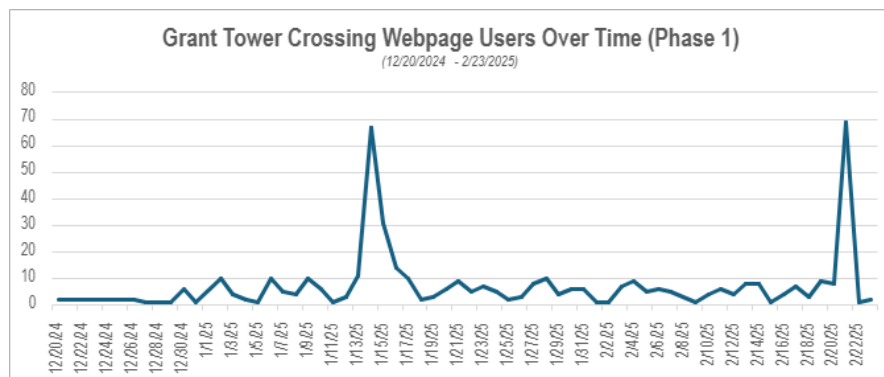
A. Engagement via Ameren Project Web Site and Other Sources

Channels of Contact Provided via the Ameren Web Site

Channel of Contact	Contact Information
Project Web site Address	www.ameren.com/company/ameren-transmission/grand-tower-crossing
Hotline	1-800-488-7119
Email	connect@grandtowercrossing.com
US Mail	Grand Tower Crossing Project ATTN: HDR 401 S 18th Street Suite 300 St. Louis, MO 63103

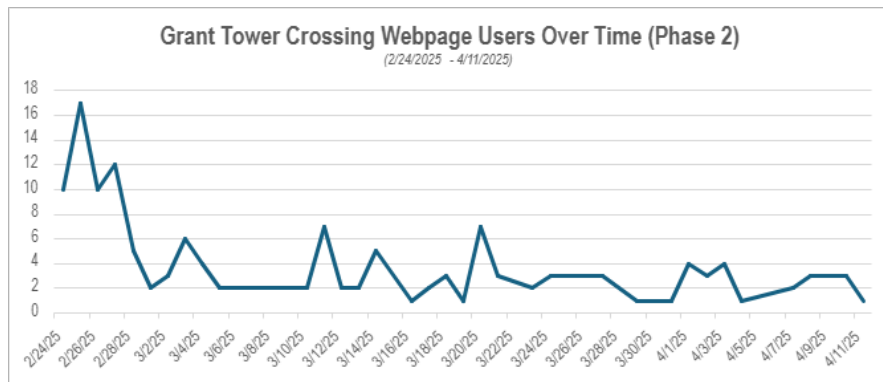
**Engagement from Website and Other Sources Phase 1
(December 20, 2024 to February 23, 2025)**

Source of Contact	Number of Contacts from Public
Project Web Site Unique Visitors	337
Project Web Site Page Views	562
Email Messages Received	4
Phone Calls to Hotline	1
Communication via US Mail	0



**Engagement from Website and Other Sources Phase 2
(February 24, 2025 to April 11, 2025)**

Source of Contact	Number of Contacts from Public
Project Web Site Unique Visitors	107
Project Web Site Page Views	172
Email Messages Received	1
Phone Calls to Hotline	0
Communication via US Mail	0



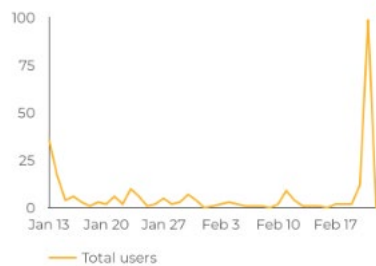
B. Virtual Open House Engagement Measures

Measures of Engagement via Virtual Open House: Phase 1 (January 13, 2025 to February 23, 2025)

Source of Contact	Number of Contacts from Public
Number of Unique Visitors	205
Number of Comments	7
Request to Join Mailing List	0

Virtual Open House Users: Phase 1

Users per Day



Measures of Engagement via Virtual Open House: Phase 2 (February 24, 2025 to April 11, 2025)

Source of Contact	Number of Contacts from Public
Number of Unique Visitors	86
Number of Comments	1
Request to Join Mailing List	0

Virtual Open House Users: Phase 2

Users per Day




Summary of All Public Comments

Input Over All Channels

	Phase 1 & Perryville Open Houses	Phase 2 & Altenburg Open Houses	Total Comments
In Person Open House (GIS, tabletop map, comment forms)	13	5	18
Email	4	1	5
Hotline	1	0	1
US Mail	0	0	0
Interactive Map Comments	7	1	8
Total Public Comments	25	7	32

C. Phase 1 Web Site Screen Shots



RESIDENTIALBUSINESSOUR COMPANY

Search

OUTAGES

SUPPORT

ACCOUNT


< Back to Transmission

Grand Tower Crossing Project


Ameren Transmission Company of Illinois (ATXI) , in collaboration with Ameren Illinois (AIC) and Citizens Electric Corporation, is proposing the Grand Tower Crossing Project (Project) to improve energy reliability for local communities. This Project includes the construction of a new, approximately 4-mile, 138 kV transmission line to connect Citizens Electric's existing Wittenberg substation in Perry County, Missouri across the Mississippi River to a new Jenkins substation near Ameren Illinois' existing Grand Tower substation in Jackson County, Illinois. As part of the project, Ameren Illinois' Grand Tower substation will be retired. The goal is to have this new line in service and providing benefits to the local community by the end of 2028.

Project Benefits

- Improving energy reliability for the surrounding region and local communities.
- Increasing transmission capacity to meet changing energy needs.
- Promoting access to diverse energy sources.
- Growing economic development opportunities.



Project Timeline



```
graph LR; A[FALL 2024 THROUGH EARLY 2025  
Routing, Stakeholder, and Public Engagement] --> B[EARLY 2025 THROUGH SPRING 2025  
Finalize route(s)]; B --> C[SPRING 2025  
File final route(s) with the Mo PSC]; C --> D[FALL 2025 THROUGH WINTER 2027  
• Receive a CCN decision from the Mo PSC  
• Permitting and agency coordination  
• Environmental studies/surveys  
• Real estate  
• Pre-construction activities]; D --> E[WINTER 2027 THROUGH 2028  
Construction begins]; E --> F[LATE 2028  
Project in-service]
```

FALL 2024 THROUGH EARLY 2025
Routing, Stakeholder, and Public Engagement

EARLY 2025 THROUGH SPRING 2025
Finalize route(s)

SPRING 2025
File final route(s) with the Mo PSC

FALL 2025 THROUGH WINTER 2027

- Receive a CCN decision from the Mo PSC
- Permitting and agency coordination
- Environmental studies/surveys
- Real estate
- Pre-construction activities

WINTER 2027 THROUGH 2028
Construction begins

LATE 2028
Project in-service

Public and Stakeholder Involvement

The team will undertake a robust stakeholder and community engagement process as we prepare to apply for a Certificate of Convenience and Necessity (CCN) from the Missouri Public Service Commission (MoPSC). Community leaders and members of the public are encouraged to get involved in several ways throughout the routing process including attending in person open houses and visiting our online engagement opportunities we'll host during early 2025.

In-person Open Houses

Thursday, January 16, 2025
11:00 am- 1:00 pm and 5:00 pm- 7:00 pm
Perryville Knights of Columbus
31 Church St.
Perryville, MO 63775

We welcome your attendance at our in person open house. All Illinois and Missouri community members are welcome. Both open houses will include the same information, with no formal presentation. Come and go as you please during the two-hour window.

Virtual Public Engagement

Unable to attend the open houses? View our self-paced, [virtual engagement and interactive comment map](#) to learn about the project and provide feedback starting January 13, 2025.

Project Maps

[Study Area – Winter 2024 \(PDF\)](#)

Contact Us

We have a designated project hotline and email address that the public can use to get in touch with members of our project team. Have a question? Please contact us using one of the methods below.

Call or Email Us

800.488.7119
connect@grandtowercrossing.com

Mail Us

Grand Tower Crossing Project
Attn: HDR
401 S 18th St
Suite 300
St. Louis, MO 63103

Frequently Asked Questions

General

What is the Grand Tower Crossing Project?	+
Where is the Project located?	+
What is Citizen's role on this project?	+
Why is the Project needed?	+
Why are you retiring the Grand Tower substation and building the new Jenkins substation?	+

Public & Stakeholder Involvement

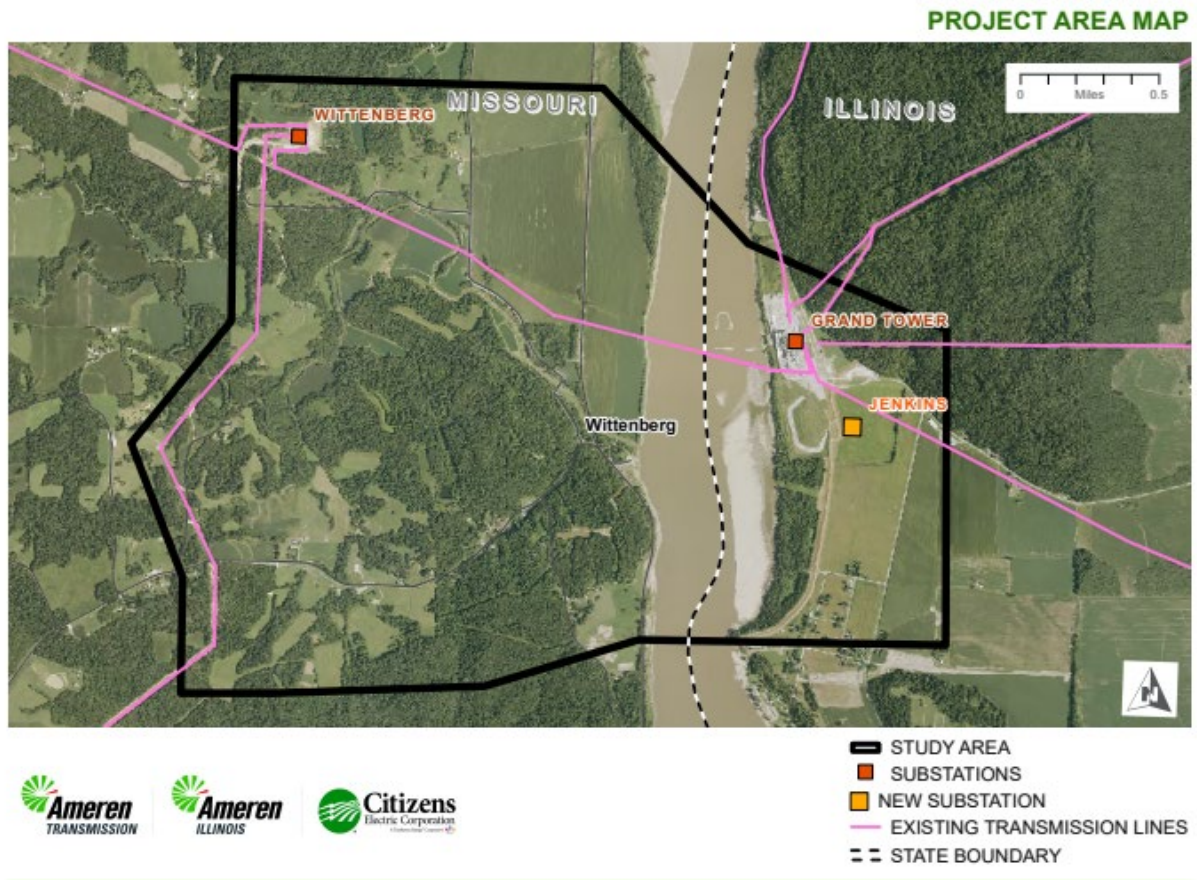
What is the purpose of holding public meetings?	+
How can I provide comments?	+

Environmental & Agency Coordination

Is the Project team coordinating environmental planning with any agencies or organizations?	+
Will the Project impact birds?	+
Will the Project impact threatened or endangered species?	+

[ABOUT AMEREN](#)[MEDIA](#)[DIVERSITY](#)[CAREERS](#)[INVESTORS](#)[CONTACT US](#)[FEEDBACK](#)

D. Phase 1 Project Area Map Posted at Website



E. Phase 1 Interactive Map Screen Shots



Grand Tower Crossing Project

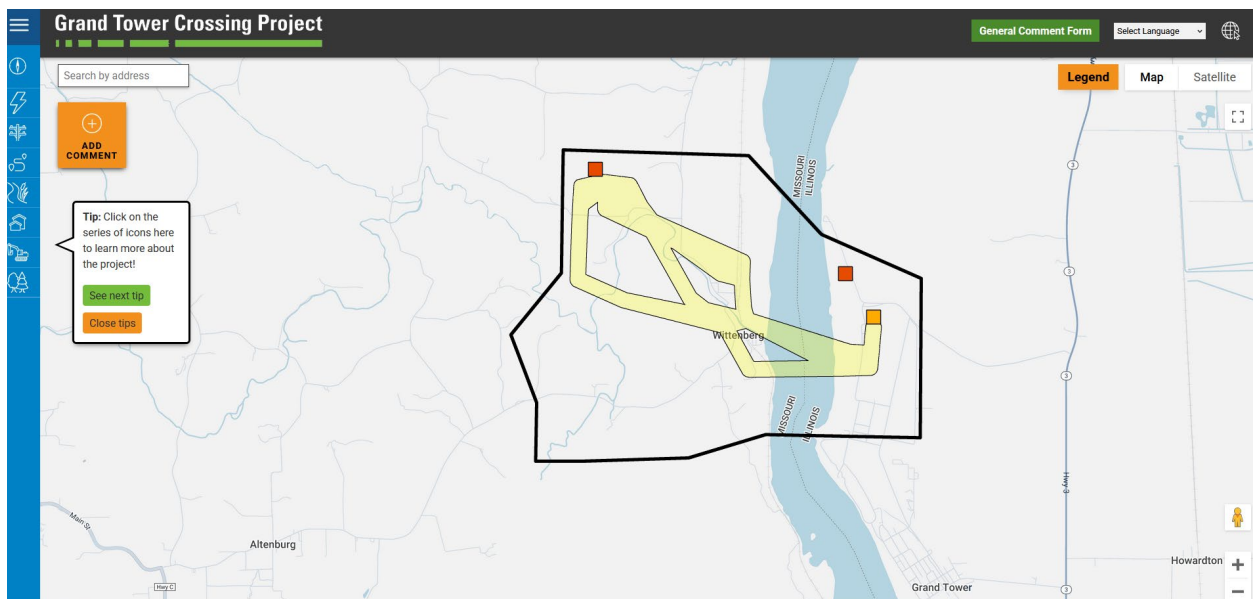
Welcome to the Grand Tower Crossing Project Virtual Engagement!

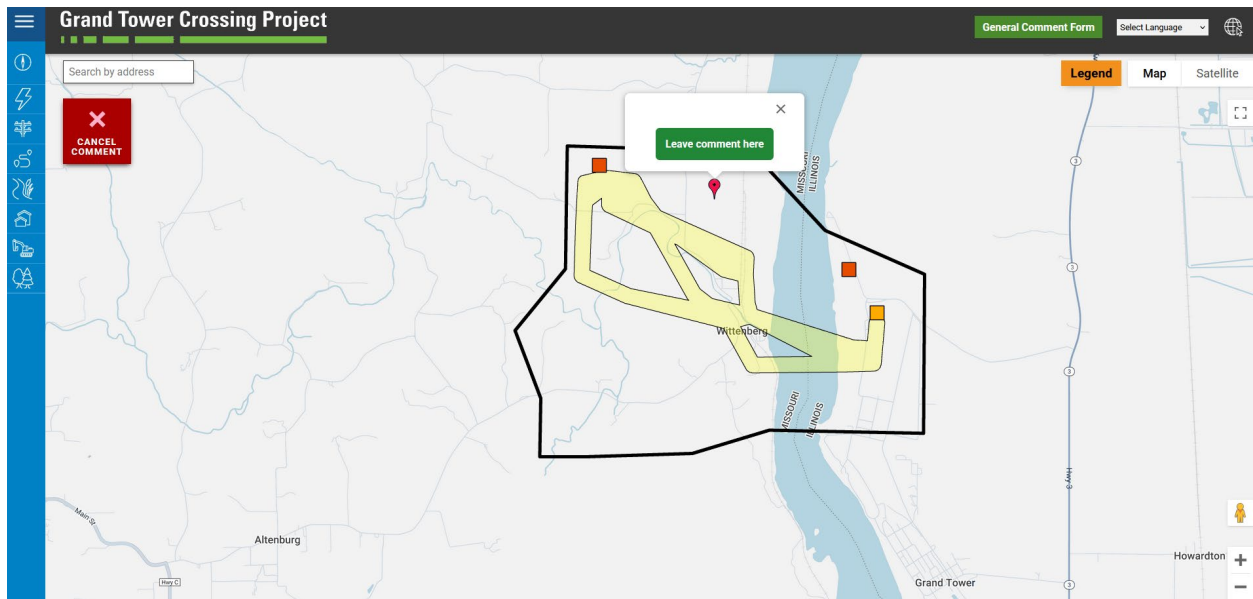
Welcome to the Grand Tower Crossing Project Virtual Engagement! We look forward to connecting with community members, landowners, and stakeholders to learn as much as we can about the area to help us route this new transmission line. Thank you for your time and feedback as we work to improve energy reliability for your community.

Learn more about how to navigate the virtual engagement and comment map by following the tips.

Let's get started!

DISCLAIMER: The information provided on this map is for discussion purposes only. Ameren Transmission Company of Illinois (ATXI) and Ameren Illinois is not bound in any way to the representations reflected on this map. This map does not represent a final determination by Ameren Illinois and ATXI as to route selection, and Ameren Illinois and ATXI is not restricted or barred from modifying or deviating from the routes proposed, or considering new or different routes.





Grand Tower Crossing Project

Return to Map

Send Language

LET'S STAY
CONNECTED

SUBMIT A COMMENT

Do you have a question or comment? Let us know!

First Name

Last Name*

Email*

Street Address

City

State

Zip Code

Comment or Inquiry*

Verify You're Not a Robot

Submit

MAILING LIST

Join our mailing list to receive periodic communications about the project.

Email*

First Name*

Last Name*

Verify You're Not a Robot

Submit

F. Phase 2 Website and Project Map Screenshots

Public and Stakeholder Involvement

The team will undertake a robust stakeholder and community engagement process as we prepare to apply for a Certificate of Convenience and Necessity (CCN) from the Missouri Public Service Commission (MoPSC). Community leaders and members of the public are encouraged to get involved in several ways throughout the routing process including attending in person open houses and visiting our online engagement opportunities we'll host during early 2025.

In-person Open Houses

Tuesday, February 25, 2025
11:00 am- 1:00 pm and 5:00 pm- 7:00 pm
Trinity Lutheran Church
57 Church St.
Altenburg, MO 63732

We welcome your attendance at our in person open house. All Illinois and Missouri community members are welcome. Both open houses will include the same information, with no formal presentation. Come and go as you please during the two-hour window.

Virtual Public Engagement

[Explore our self-paced virtual engagement](#) at any time to learn more about the project and provide feedback.

Review and provide feedback on the Preliminary Route Alternatives directly on the interactive map starting February 24, 2025.

Project Maps

Study Area – Winter 2024 (PDF)
Preliminary Route Corridors – January 2025 (PDF)
Preliminary Route Alternatives – February 2025 (PDF)

Contact Us

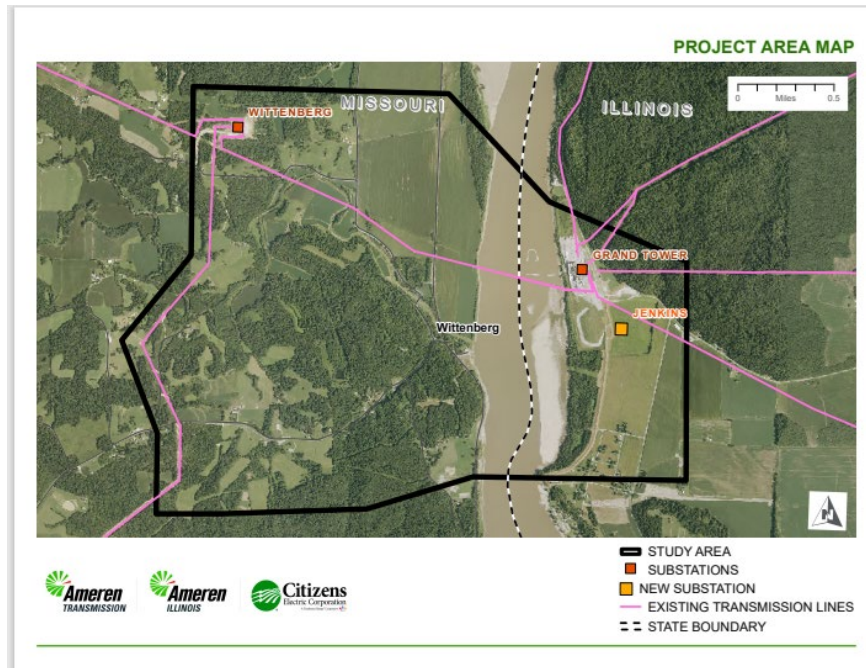
We have a designated project hotline and email address that the public can use to get in touch with members of our project team. Have a question? Please contact us using one of the methods below.

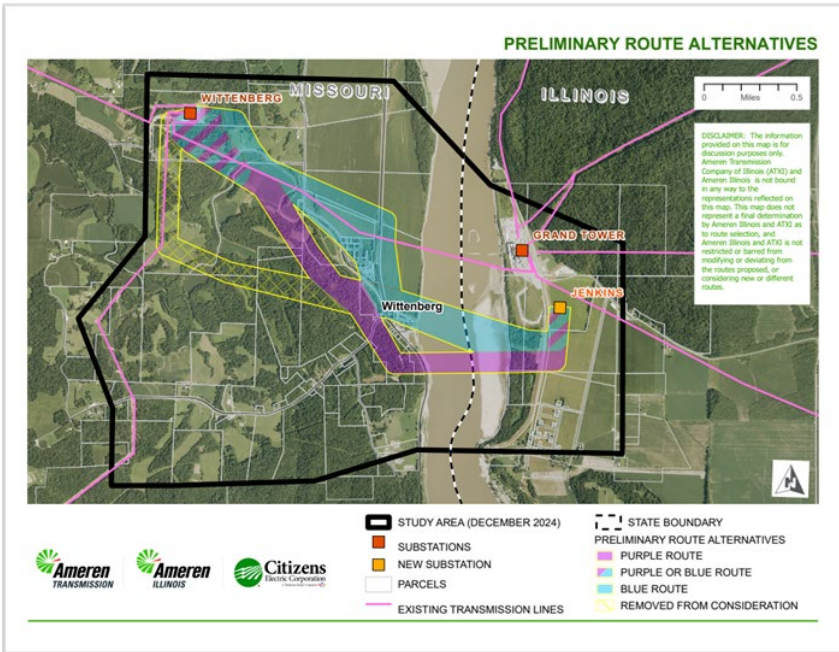
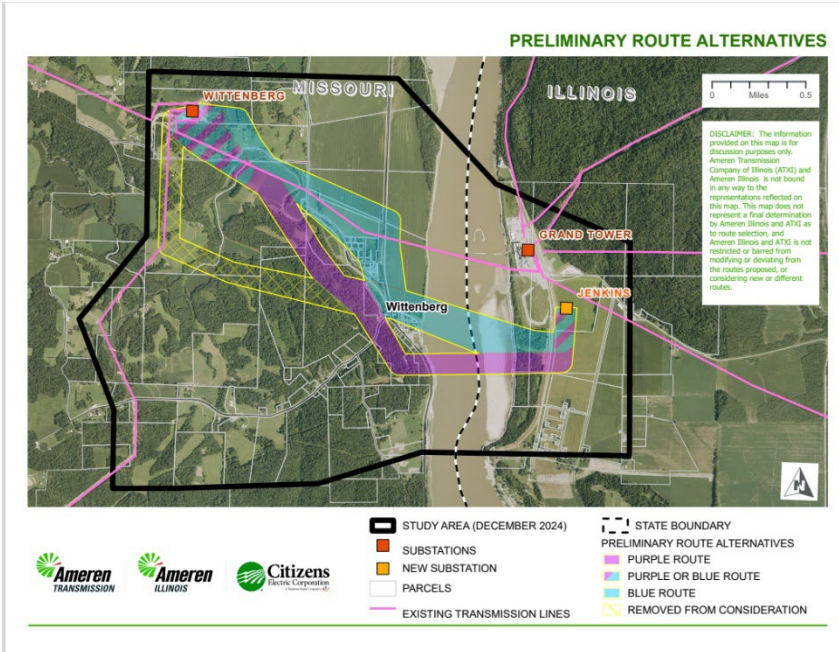
Call or Email Us

800.488.7119
connect@grandtowercrossing.com

Mail Us

Grand Tower Crossing Project
Attn: HDR
401 S 18th St
Suite 300
St. Louis, MO 63103





G. Phase 2 Interactive Map Screenshots

