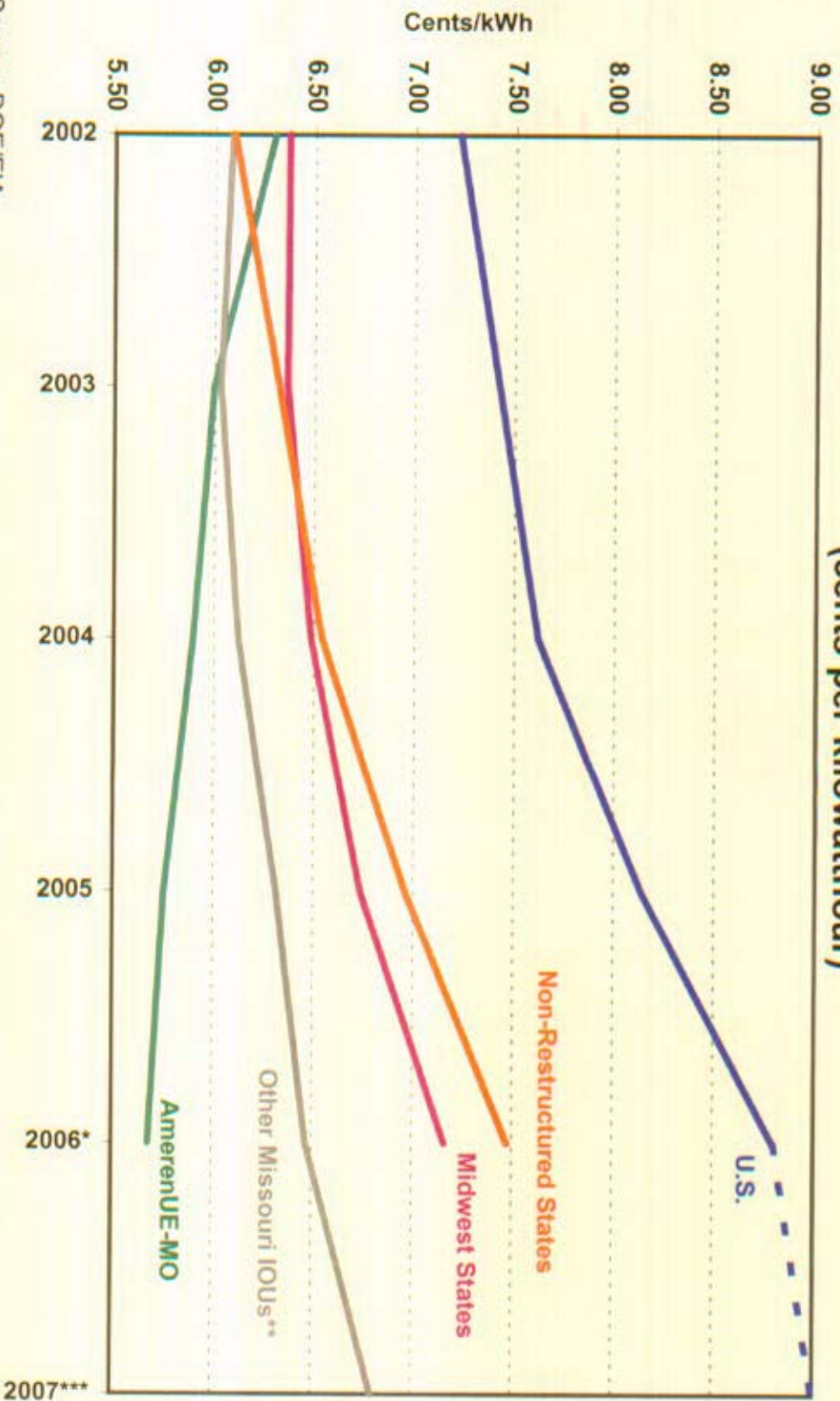


## Comparison of AmerenUE-Missouri Average Retail Rates (cents per kilowatthour)



Source: DOE/EIA.

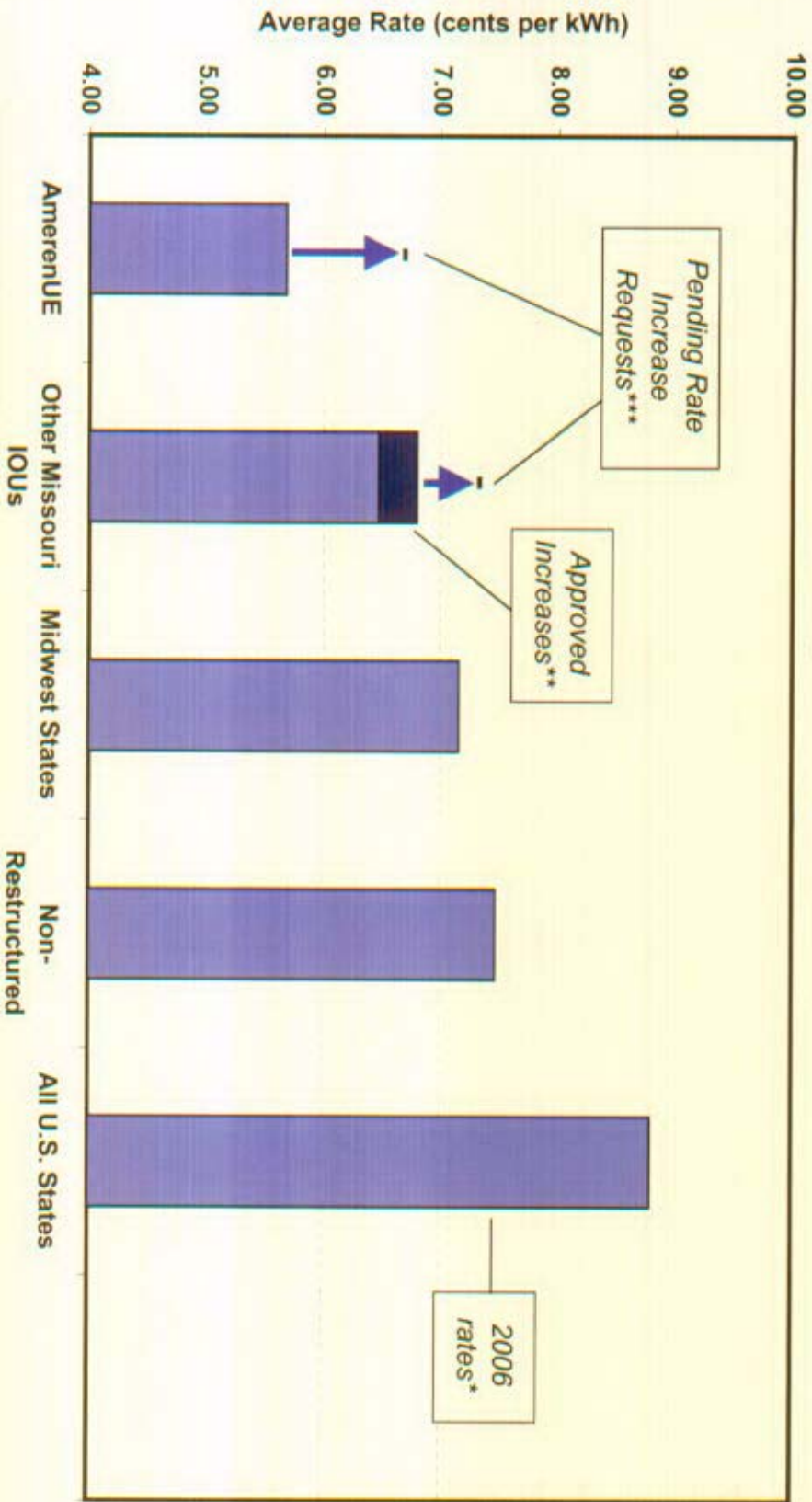
\* U.S. based on 2006 annual DOE data; rest based on rates in effect for twelve months ending October 2006.

\*\* Other Missouri IOUs are Aquila, Empire District Electric, and Kansas City Power & Light.

\*\*\* In 2007, U.S. rate based on DOE forecast. Other Missouri IOU 2007 rates reflect recently approved rate increases for Empire and Kansas City Power & Light, but not Aquila's pending 22% rate increase request.

Non-restructured states are those states that have not deregulated the generation of electricity, similar to Missouri. Midwest states based on Census Region definitions. Retail customers include residential, commercial, and industrial customers.

## AmerenUE Average Retail Rates with Requested Increase Compared to Other Utilities



Source: DOE/EIA Form 826.

\* U.S. based on 2006 annual DOE data; rest based on rates in effect for twelve months ending October 2006.

\*\* Rate increases recently approved for Empire District Electric and Kansas City Power & Light.

\*\*\* Arrows reflect initially-requested increases by AmerenUE and Aquila in their 2006 filings.

Non-restructured states are those states that have not deregulated the generation of electricity, similar to Missouri.

Midwest states based on Census Region definitions.

Other Missouri IOUs are Aquila, Empire District Electric, and Kansas City Power & Light.

Retail customers include residential, commercial, and industrial customers.



# 1980-2006 Changes in Electric Rates & Consumer Prices

## Consumer Prices:

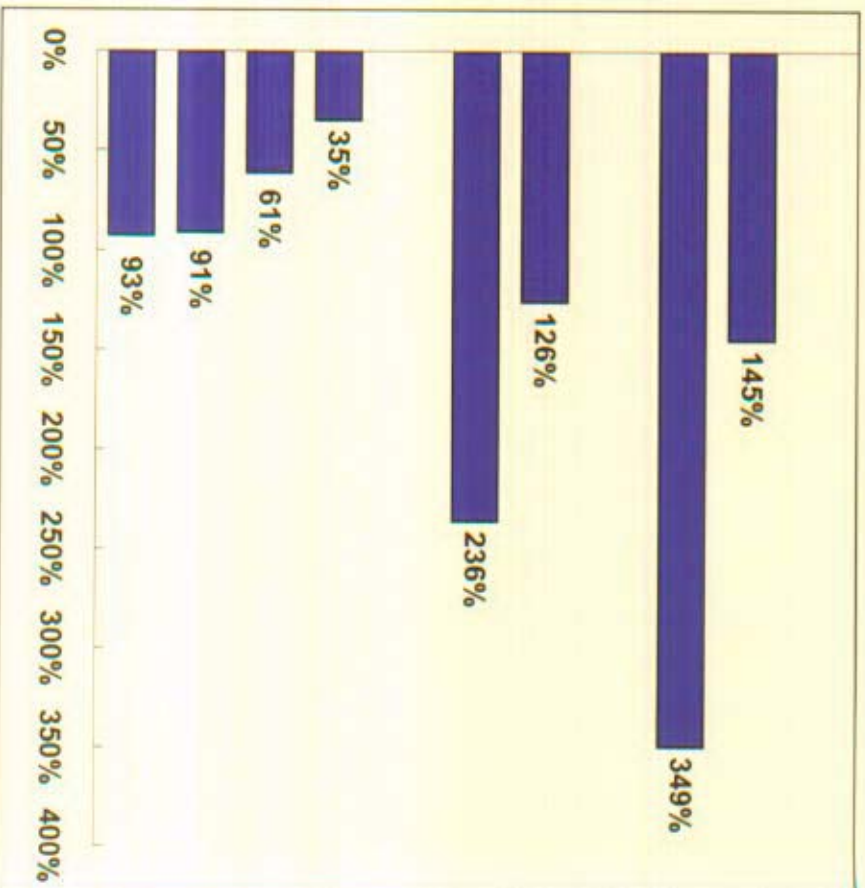
All Consumer Products  
Medical Care

## Consumer Energy Products:

Gasoline  
Natural Gas

## Electricity Rates (Residential):

AmerenUE-MO  
Midwest States  
Non-Restructured States  
US



## Sources and Notes:

Consumer prices based on Bureau of Labor Statistics (BLS) CPI indices.

Consumer energy prices based on BLS average prices.

Non-Restructured and Midwest Electricity Rates based on EIA Form 826 and EIA 861

Non-restructured states are those states that have not deregulated the generation of electricity, similar to Missouri.