

## KCPL E-Mail Admin

**From:** Price David  
**Sent:** Sunday, January 20, 2008 7:57 PM  
**To:** Schumaker Denise; Davis Brent; Ballard Mike; Foster Terry; Jones Steve; Hermesen Mike; Miller Hugh; Burnett George  
**Cc:** Hanson Cynthia  
**Subject:** RE: Reforecasting Meeting -- Leadership Team

**Attachments:** 2008 01 22 Cost Reforecasting supplement.ppt

We will discuss the attached draft document at the meeting tomorrow morning. Please bring a copy to the meeting.  
Thanks.

Dave



2008 01 22 Cost  
Reforecasting ...

---

**From:** Schumaker Denise  
**Sent:** Sunday, January 20, 2008 4:21 PM  
**To:** Davis Brent; Ballard Mike; Foster Terry; Jones Steve; Price David; Hermesen Mike; Miller Hugh; Burnett George; Schumaker Denise  
**Subject:** Reforecasting Meeting -- Leadership Team  
**When:** Monday, January 21, 2008 7:30 AM-9:00 AM (GMT-06:00) Central Time (US & Canada).  
**Where:** Work Controls  
**Importance:** High

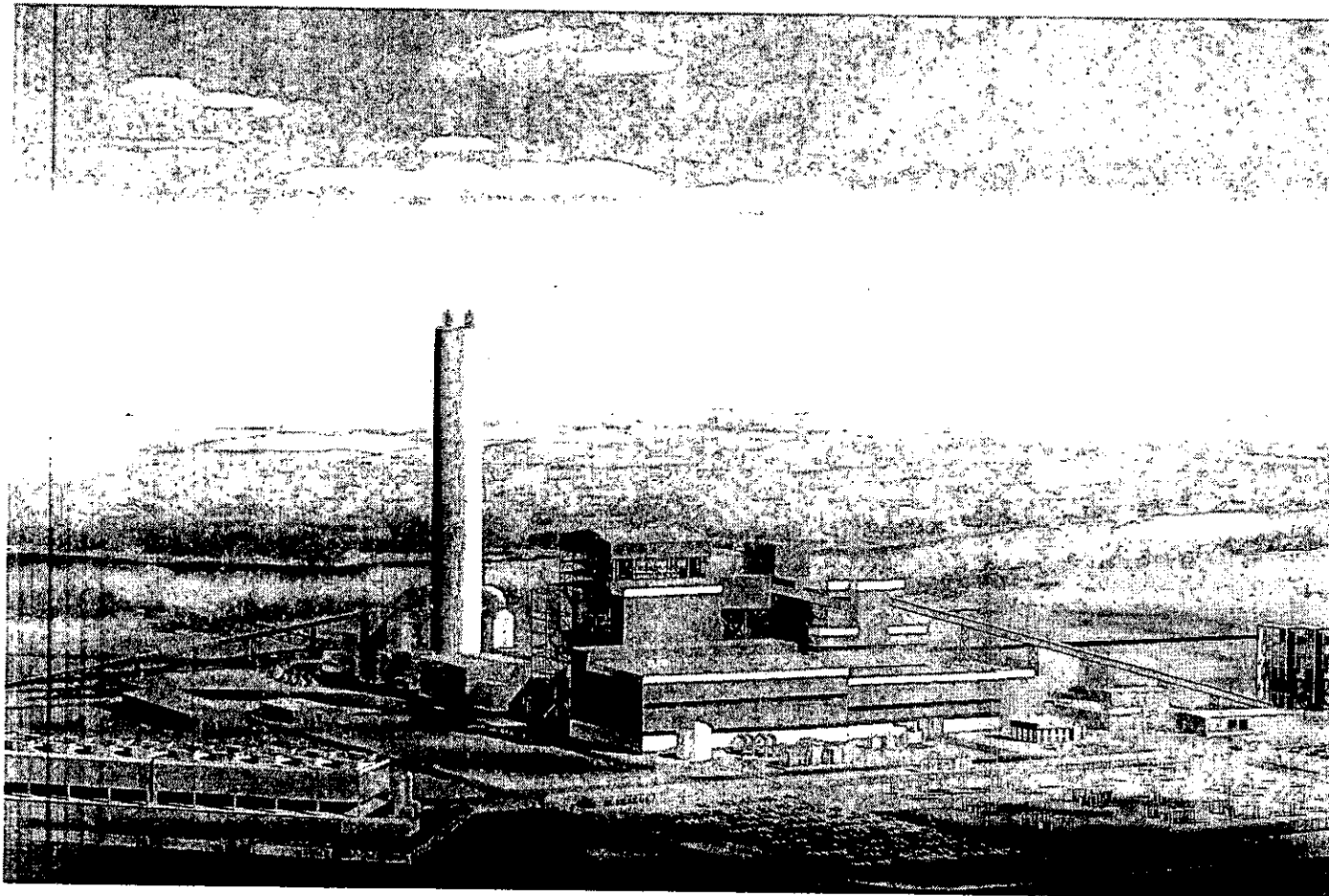
When: Monday, January 21, 2008 7:30 AM-9:00 AM (GMT-06:00) Central Time (US & Canada).  
Where: Work Controls

\*~\*~\*~\*~\*~\*~\*~\*~\*

Dave has called this meeting to discuss the reforecasting effort and how we will proceed.

Staff  
Exhibit No. 145  
Case No(s) EM-2007-0374  
Date 4-30-08 Rptr PF

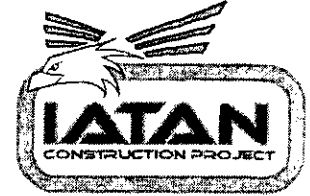
# Iatan Unit 1 and Unit 2 Cost Reforecast Update



**January 22, 2008**

**HIGHLY CONFIDENTIAL / PROPRIETARY**

# Discussion Topics

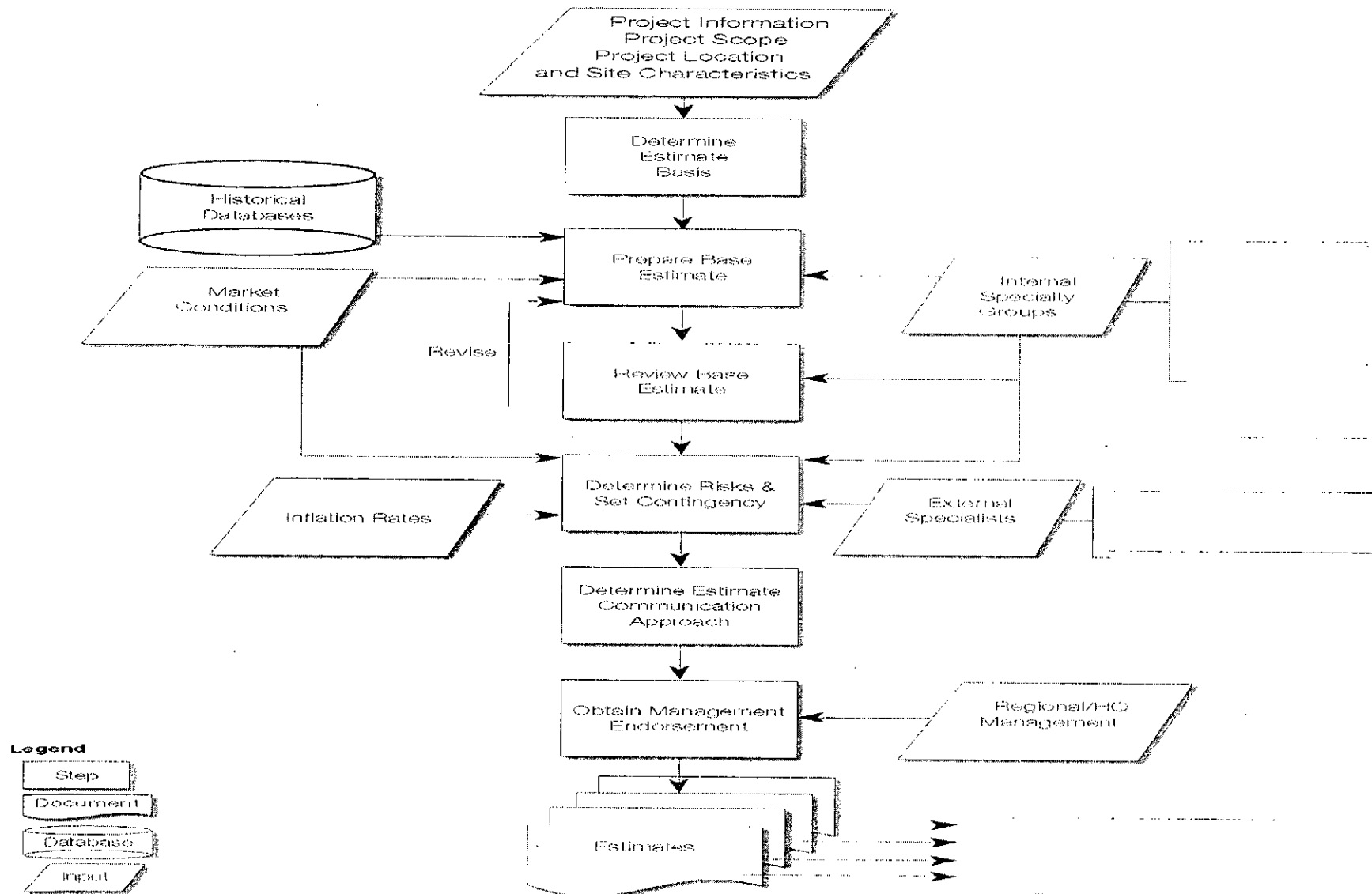


- **Baseline Cost Estimate & Cost Reforecasting Process**
- **Description of Cost Reforecast Activities**
- **Cost Reforecast Schedule**
- **Cost Reforecast Communication Process**



# **Baseline Cost Estimate & Cost Reforecasting Process**

# Initial Baseline Cost Estimate Process



# Cost Reforecasting Process

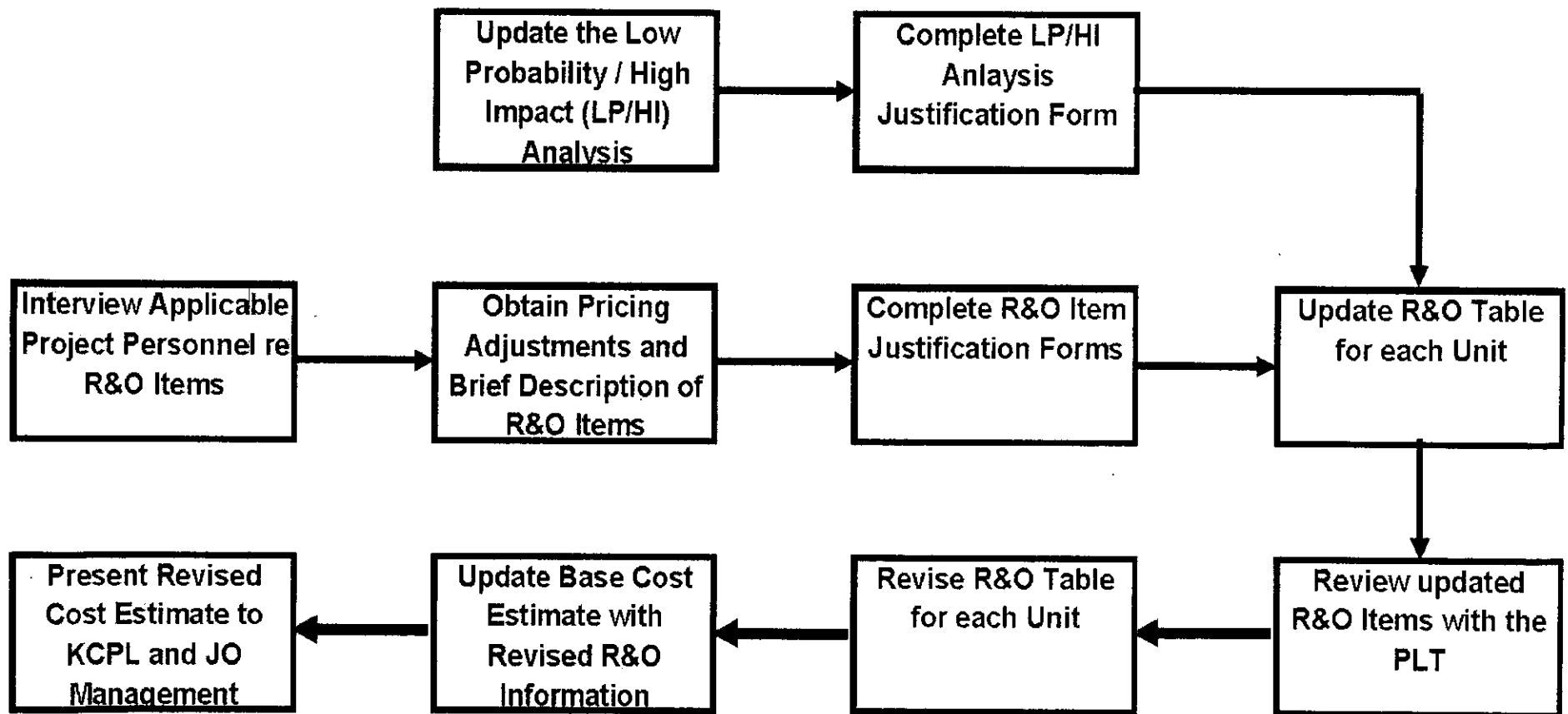
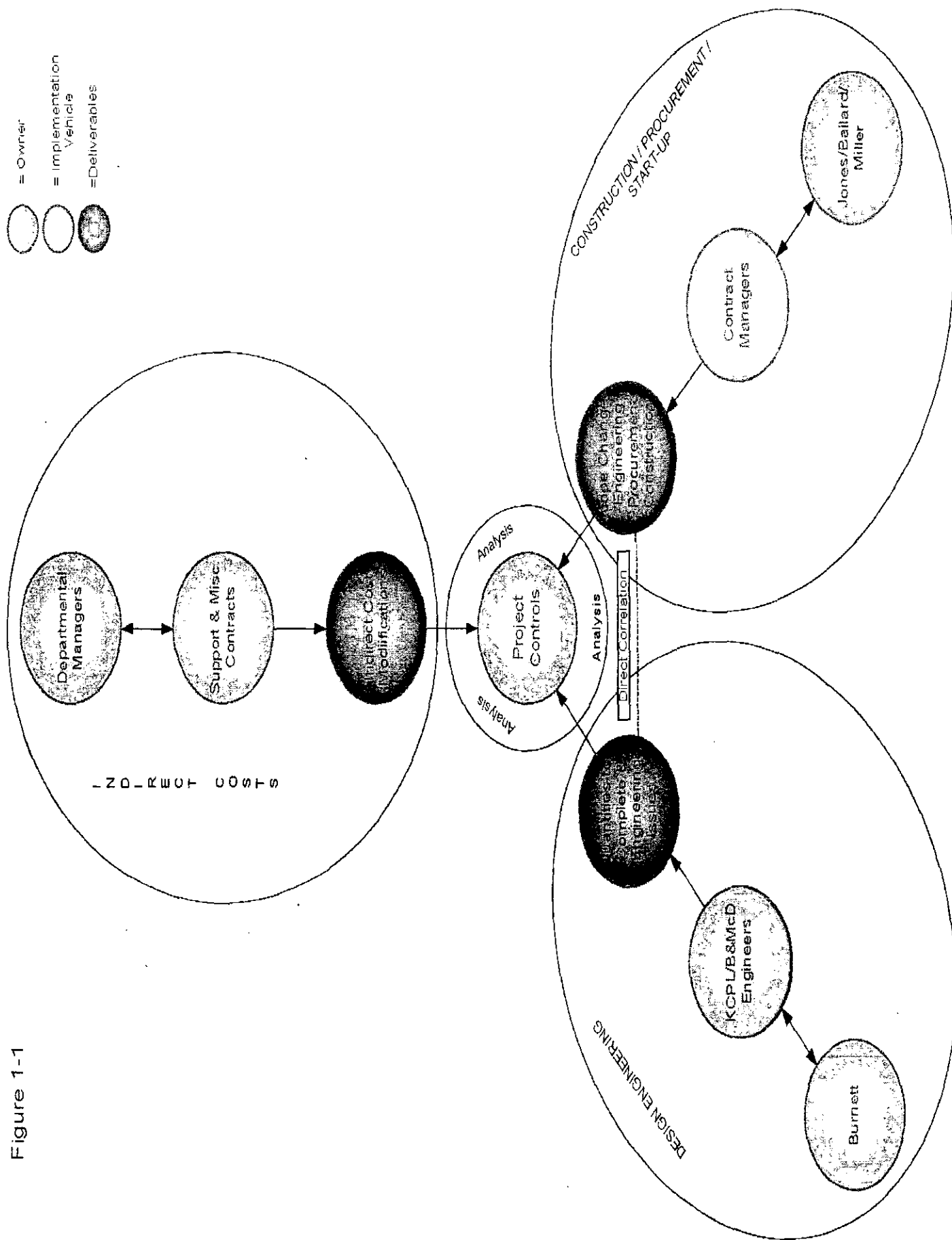


Figure 1-1

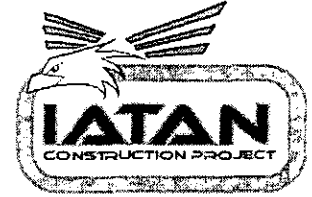




# **Description of Cost Reforecast Activities**



# **CBE Contingency Drawdown Analyses**



- **Will Address:**
  - Drawdowns to Date
  - Future Drawdowns
  - Future Cash Flow Requirements
  
- **Process to be Followed:**
  - See Attached Slide
  - Future Drawdown Analysis very advanced

# Risk Matrix Review and Analysis



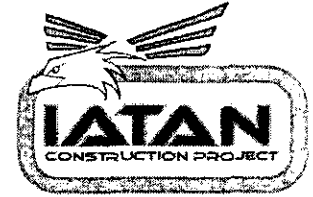
- Includes a Review and Vetting of all Risk Matrix Categories and Items
- Includes a Review of the original Low Probability/High Impact Process with revisions as required

# Major Area Cost to Complete Analyses



- **Unit 1 AQCS and Plant Projects**
- **Kiewit**
- **Engineering**
- **Owner CM Staff**

# Cost to Complete Documentation



- **Completed Justification Forms**
- **Contingency Drawdown Item Descriptions**
- **Documentation Book**

# Unit 1 Outage Schedule Impact Analysis



- **Technical and Financial Analysis and Impact of:**
  - **Planned Completion of Outage Activities**
  - **Outage Start**
  - **Outage Duration**
- **Summary of Recommendations**

# Change Management Process Analysis

---



- **Change Notice and Change Order Statistics:**
  - **Past Experience:**
    - by Major Supplier and Contractor
    - In Total
  - **Future Projections:**
    - By Major Supplier and Contractor
    - In Total

# Internal Review and Input



- **Review of:**
  - **Overall Process**
  - **Revised Estimate**
  - **Documentation**
- **Cost Comparison to Similar Projects**

# External Review, Input and Audit



- **Review of:**
  - **Overall Process**
  - **Revised Estimate**
  - **Documentation**
- **Craft Labor Survey**
- **Cost Comparison to Similar Projects**



# **Management Responses to External Review, Input and Audit**

---



- **Response by PLT to External Review and Audit Findings**
- **Implementation of all Relevant Findings**



# Cost Reforecast Schedule

# Cost Reforecasting Activities & Status



No.	Activity	Responsibility	Completion Date	Percent Complete
1	<b>CBE Contingency Drawdown Analyses:</b>			
	a. To Date Drawdowns	Foster	January 28	100%
	b. Future Drawdowns & Cash Flow Projection	Foster	February 15	75%
2	<b>Risk Matrix Review and Analysis</b>	Schumaker	January 31	50%
3	<b>Major Area Cost to Complete Analyses:</b>			
	a. Unit 1 AQCS and Plant Project Analyses	Davis	February 8	100%
	b. Kiewit Estimate to Complete Development and Analysis	Jones/Ballard	February 15	20%
	c. Engineering Estimate to Complete Development and Analysis	Burnett	January 31	75%
	d. Owner CM Staff Estimate to Complete Development and Analysis	Schumaker	February 8	20%
4	<b>Cost to Complete Documentation and Justification</b>	Schumaker	February 15	10%
5	<b>Unit 1 Outage Schedule Impact Analysis</b>	Foster/Davis	February 8	20%
6	<b>Change Management Process Analysis</b>	Jones	January 31	10%
7	<b>Internal Review and Input:</b>			
	a. Overall Process, Estimate and Documentation	Price	February 15	40%
	b. Cost Comparison to Similar Projects	Price	February 15	10%
8	<b>External Review, Input and Audit:</b>			
	a. Overall Process, Estimate and Documentation	Price/Schumaker	February 29	0%
	b. Craft Labor Survey	Burnett	February 8	0%
	c. Cost Comparison to Similar Projects	Price	February 29	0%
9	<b>Management Responses to External Reviews, Input and Audit</b>	Price/Schumaker	March 7	0%
10	<b>Presentation to KCPL Senior Management</b>	Project Team	March 14	0%
11	<b>Presentation to Joint Owners</b>	Project Team	March 21	0%
12	<b>Presentation to Kansas and Missouri Commissions</b>	Regulatory & Project Team	March 31	0%

0 10 20 30 40 50 60 70 80 90 100



# **Cost Reforecast Communication Process**

# Presentations

---



- **To KCPL EOC**
- **To Joint Owners**
- **To Kansas and Missouri Commissions**