

**BEFORE THE PUBLIC SERVICE COMMISSION  
OF THE STATE OF MISSOURI**

In the Matter of the Compliance of KCP&L Greater )  
Missouri Operations Company with Certain ) File No. EO-2019-0045  
Requirements Related to SB 564 and Related Matters )

In the Matter of the Compliance of Kansas City )  
Power & Light Company with Certain Requirements ) File No. EO-2019-0047  
Related to SB 564 and Related Matters )

**NOTICE OF STAKEHOLDER PRESENTATION**

COMES NOW, Evergy Metro, Inc. d/b/a Evergy Missouri Metro (“Evergy Missouri Metro”) and Evergy Missouri West, Inc. d/b/a Evergy Missouri West (“Evergy Missouri West”) (collectively, the “Company”) and for their *Notice* (“Notice”), state as follows:

1. On March 26, 2026, the Company held a presentation for stakeholders related to Evergy Missouri Metro’s and Evergy Missouri West’s respective annual and five-year capital investment plans previously filed in the above-captioned dockets. A copy of the presentation is attached hereto as **Exhibit A**.

**WHEREFORE**, the Company files this Notice for the Commission’s information.

Respectfully submitted,

*/s/ Roger W. Steiner*

Roger W. Steiner, MBN 39586  
Cole Bailey, MBN 77628  
Corporate Counsel  
Evergy, Inc.  
1200 Main Street, 17<sup>th</sup> Floor  
Kansas City, MO 64105  
Phone: (816) 556-2314  
[roger.steiner@energy.com](mailto:roger.steiner@energy.com)  
[cole.bailey@evergy.com](mailto:cole.bailey@evergy.com)

**Attorney for Evergy Missouri Metro and Evergy  
Missouri West**

**CERTIFICATE OF SERVICE**

I hereby certify that a true and correct copy of the above and foregoing document was served upon all counsel of record on this 27<sup>th</sup> day of March 2026, via e-mail.

*/s/ Roger W. Steiner*

\_\_\_\_\_  
Roger W. Steiner



# Evergy Annual and 5-Year Capital Plans

*Empowering a Better Future*

Darrin Ives / Geoffrey Ley / Jason Humphrey /  
Andy Alexander

EO-2019-0045 & EO-2019-0047

Public Stakeholder Meeting

March 26, 2026





# State Policy Encourages Grid Mod And Renewables

*Senate Bill 564 implemented to promote state's transition to cleaner, more advanced grid*

## Policy Objectives of Missouri Senate Bill 564

**Enhance  
reliability,  
resiliency, and  
security**



**Adapt to a  
changing  
generation  
landscape**



**Improve  
customer  
service**





# Evergy's Capital Investment Plan (2026-2030)

## Improves reliability and resiliency

- Replace aged infrastructure
- Deploy enhanced automation and communication

## Maintains affordability

- Rate impacts planned to be below SB 564 limits
- Cost increases less than expected inflation
- All of the above generation strategy including fuel free and highly efficient firm-dispatchable units

## Modernizes Fleet

- Concentration on resource adequacy and fleet modernization
- Deploy technology to enable distributed resources

## Improves customer experience

- Technology investment enables expanded digital, automated communications
- Investments in core systems maximizes benefit to customers

## Enhances economic development

- Improved cost competitiveness, reliability and sustainability to attract companies to the state
- Grid modernization capital expenditures drive economic growth

## Capital Plan Highlights

- Planning \$11.5B of infrastructure investment in Missouri 2026-2030
- More than 62% of 2026 spend will go directly to grid modernization<sup>1</sup>
- 2026-2030 spend will include investment in new efficient, dispatchable natural gas generation and renewables

## 2025 Progress

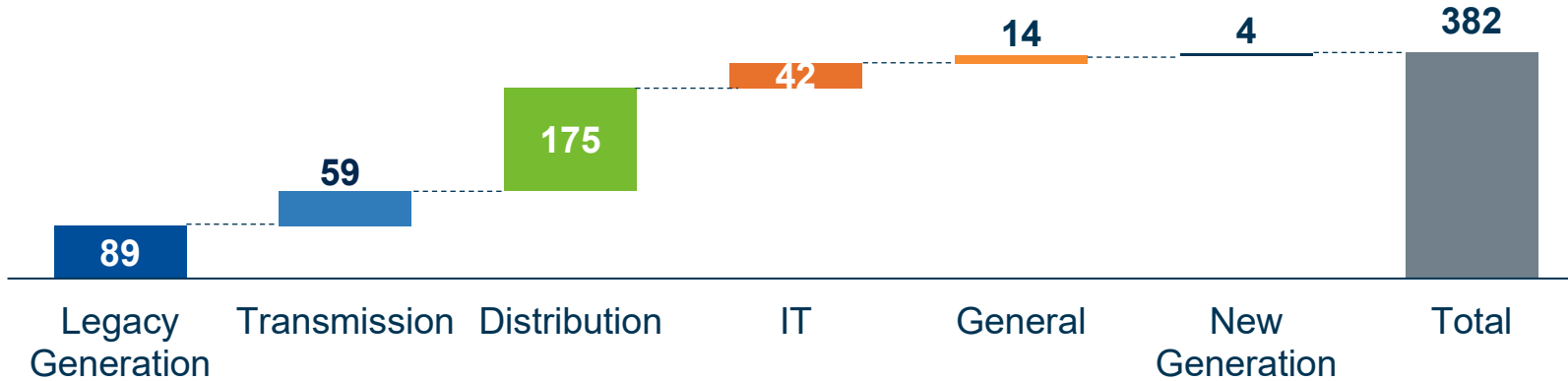
- Invested about \$1.2 billion in Missouri assets
- 57% spent on grid modernization projects<sup>1</sup>

<sup>1</sup>Adjusted to exclude removal, nuclear fuel, and new generating units and energy storage systems

# 2025 Capital Investment Update

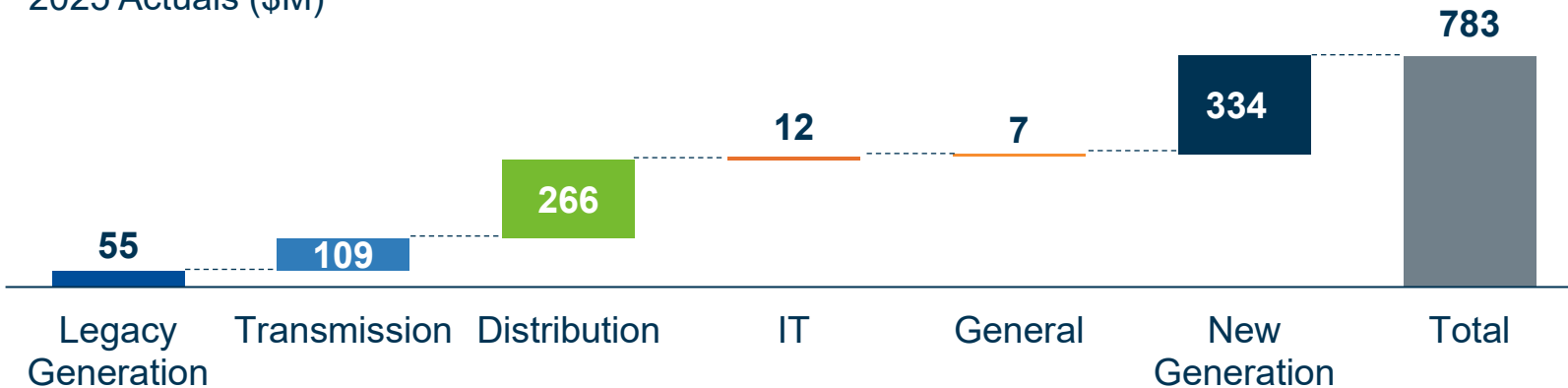
## Missouri Metro – Capital Investments

2025 Actuals (\$M)



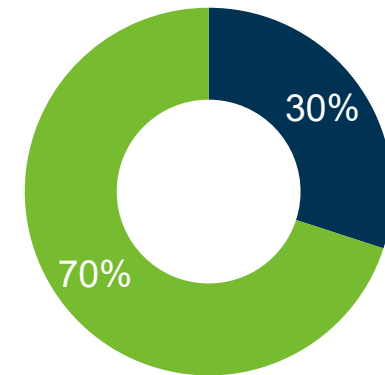
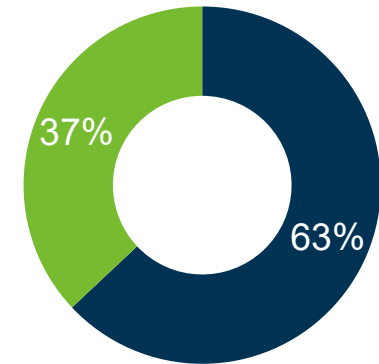
## Missouri West – Capital Investments

2025 Actuals (\$M)



## Grid Modernization Investment

% of 2025 Actuals<sup>1</sup>



Grid Modernization Other

<sup>1</sup>Adjusted to exclude removal, nuclear fuel, and new generating units and energy storage systems

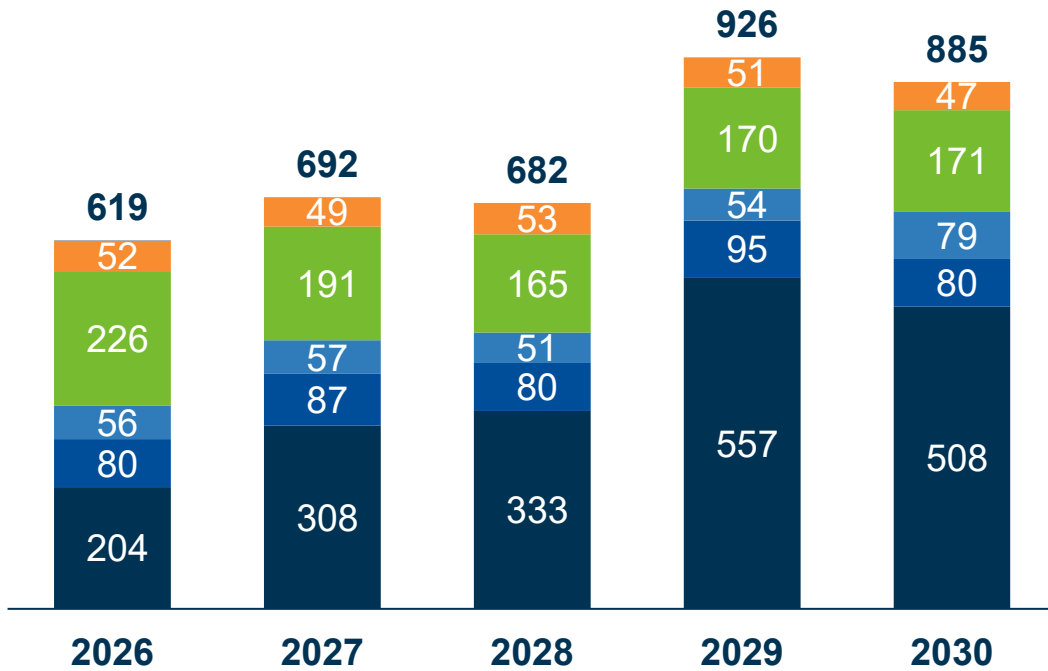




# Evergy's Five-Year Capital Plan

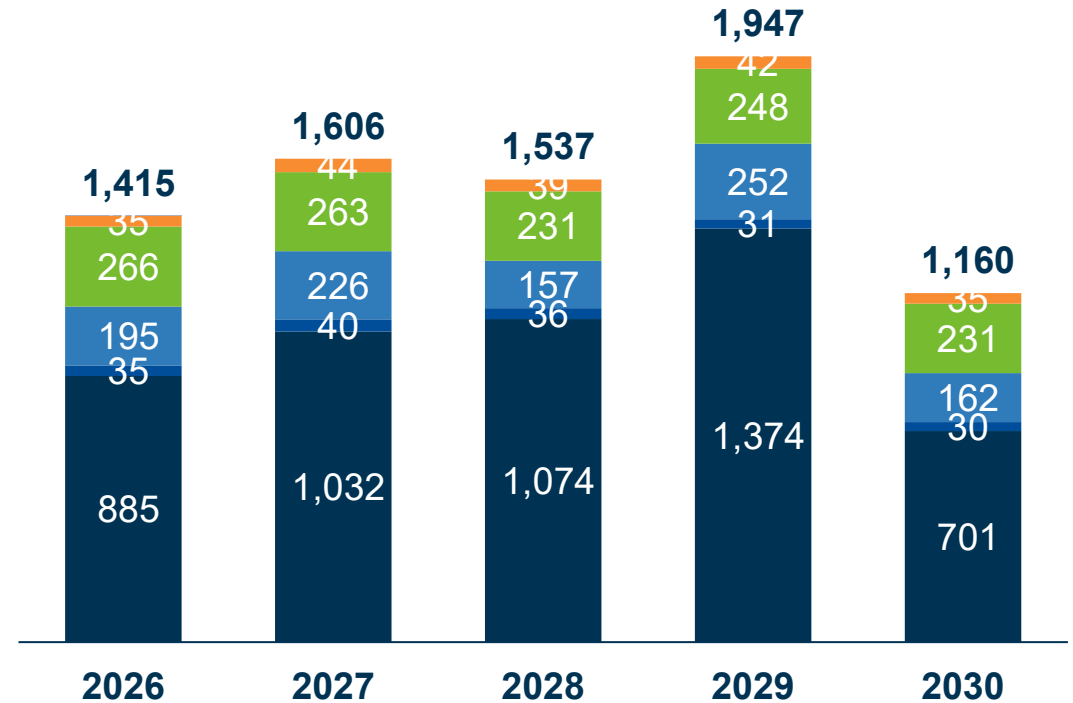
*Continued investment in Missouri, focus on grid modernization and new dispatchable generation*

**Missouri Metro (\$M)**



48% Grid Modernization in 2026

**Missouri West (\$M)**



69% Grid Modernization in 2026

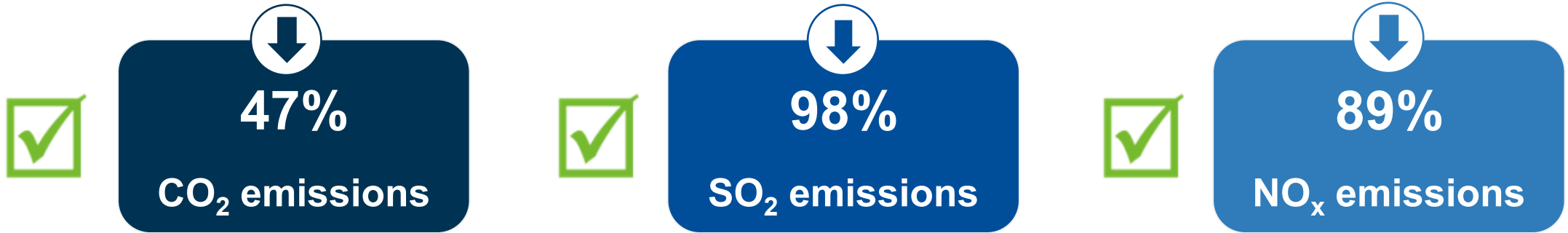
New Generation
  Legacy Generation
  Transmission
  Distribution
  IT and General





# Emissions Reductions From Generation Resources

## Achieved Emissions Reductions Since 2005



***Evergy has a track record of significant emissions reductions***



# Converting Tier 1 Large Load Customer Pipeline to Electric Service Agreements

Pipeline Category	Peak GW Potential	Commentary
<b><u>Tier 1</u> Active Operations and Signed ESAs</b>	<b>~2.4</b>	<ul style="list-style-type: none"> <li>Includes projects already in operation progressing toward a steady-state of 450 MW</li> <li>Includes 1.9 GWs of newly executed ESAs or near final ESAs under the LLPS</li> <li>LLPS customers pay a premium demand rate ~15-20% higher than the standard industrial rate</li> <li>Recent announcements include ESAs for 4 projects (2 new, 2 expansions)</li> </ul>
<b><u>Remaining Tier 1</u> Advanced Discussions</b>	<b>~2.0-3.5</b>	<ul style="list-style-type: none"> <li>Expect at least one more executed large customer ESA in 2026</li> <li>Represents multiple customers that have acquired land or land rights, signed letters of agreement, and for which transmission and generation capacity solutions are under review</li> <li>Financial commitments received; further agreements to be executed</li> </ul>
<b><u>Tier 2</u></b>	<b>10+</b>	<ul style="list-style-type: none"> <li>Incremental pipeline not yet in active Path to Power queue as Evergy evaluates opportunity to serve, and is well in excess of 10 GWs</li> </ul>

***Tier 1 large load customers will empower growth, investments and drive prosperity for our region; LLPS tariffs provide protections for existing customers and ensure large customers pay their fair share of system costs***

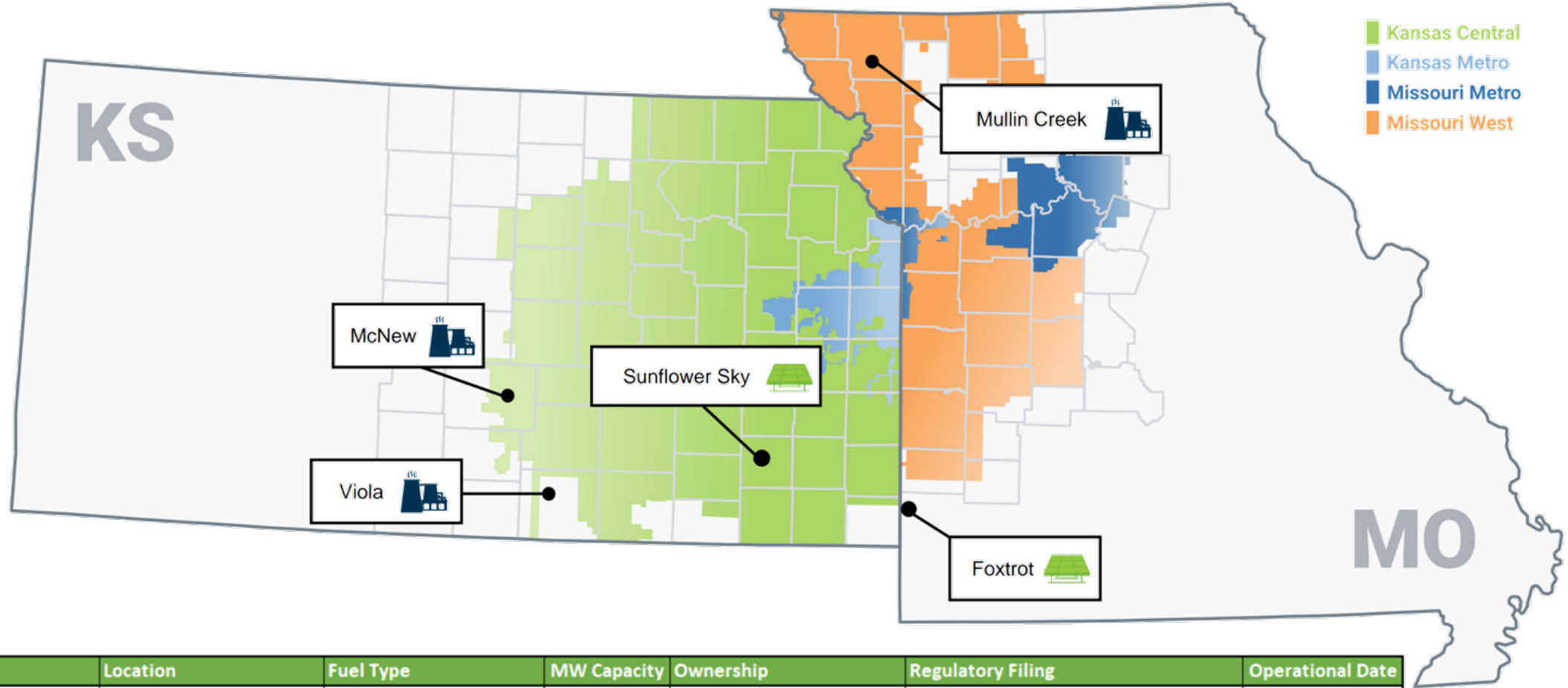


# Generation Projects





# Approved New Generation Projects for Missouri



Project	Location	Fuel Type	MW Capacity	Ownership	Regulatory Filing	Operational Date
Sunflower Sky	Wilson County (KS)	Solar	65	EMW	CCN (MO)	2027
Foxtrot	Jasper County (MO)	Solar	100	EMW	CCN (MO)	2027
Viola	Sumner County (KS)	Natural Gas	705	EMW (50%) / EKC (50%)	CCN (MO) & Predetermination (KS)	2029
Mullin Creek #1	Nodaway County (MO)	Natural Gas & Fuel Oil	425	EMW	CCN (MO)	2030
McNew	Reno County (KS)	Natural Gas	705	EMW (50%) / EKC (50%)	CCN (MO) & Predetermination (KS)	2030

# Foxtrot Solar (EA-2024-0292)



## Overview of Project

- 2024 Triennial Integrated Resource Plan identified ~150MWac need for solar by 2027
- Foxtrot is a 100MWac site located in Jasper County, Missouri
- Evergy Missouri West received a Certificate of Convenience and Necessity (CCN) effective on August 9, 2025

## Project Milestones

- ✓ Start of Construction – November 2025
- Civil Site Construction – H1 2026
- Module Installation – H2 2026
- Testing and Commissioning – H1 2027
- Final Completion – H2 2027

***Foxtrot is anticipated to serve Missouri West customers in 2027***



# Sunflower Sky Solar (EA-2024-0292)



## Overview of Project

- 2024 Triennial Integrated Resource Plan identified ~150MWac need for solar by 2027
- Sunflower Sky 65MWac site located in Wilson County, KS
- Evergy Missouri West received a Certificate of Convenience and Necessity (CCN) effective on August 9, 2025

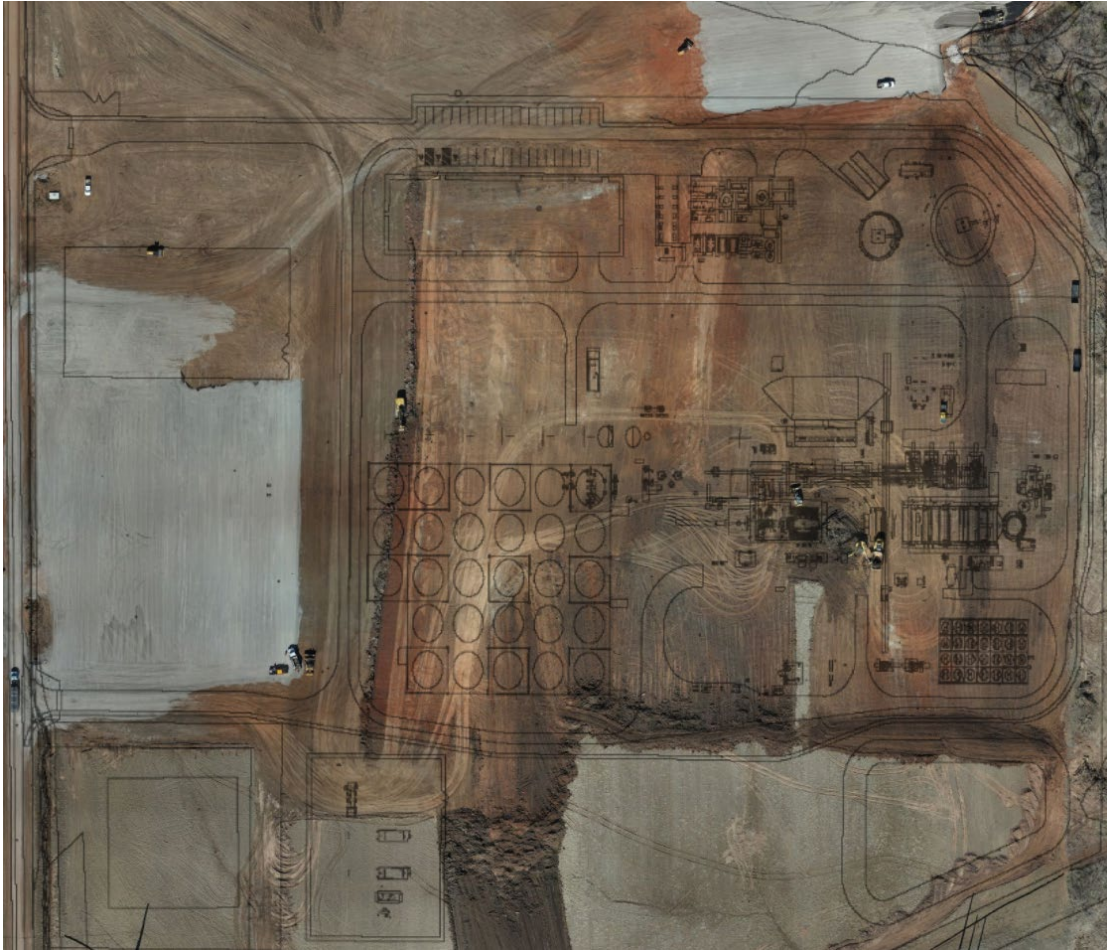
## Project Milestones

- ✓ Start of Construction – December 2025
- Pre-drill and Pile Installation – Mid-2026
- Civil/Site Construction Complete – 2026
- Testing and Commissioning – H1 2027
- Final Completion – H2 2027

Laydown Yard Construction – Phase G

***Sunflower Sky is anticipated to serve Missouri West customers in 2027***

# 50% stake in Sumner County Combined Cycle Plant (EA-2025-0075)



## Overview of Project

- The 2024 Triennial Integrated Resource Plan identified a need for 325 MW of firm dispatchable thermal energy in 2029
- Evergy Missouri West received a Certificate of Convenience and Necessity (CCN) effective on August 10, 2025
- Viola is 710 MW Combined Cycle Gas Turbine located in Sumner County, KS and will be shared with Evergy Kansas Central

## Key Milestones

- ✓ Begin on-site construction – February 2026
- Major equipment deliveries – H2 2027
- Fuel Gas Available – H1 2028
- Commissioning – H1 2029
- Commercial Operation - H1 2029

***Sumner County Combined Cycle Plant is anticipated to serve Missouri West customers in 2029***

# 50% stake in Reno County Combined Cycle Plant (EA-2025-0075)



## Overview of Project

- The 2024 Triennial Integrated Resource Plan identified a need for 325 MW of firm dispatchable thermal energy in 2029
- Evergy Missouri West received a Certificate of Convenience and Necessity (CCN) effective on August 10, 2025
- McNew is a 710 MW Combined Cycle Gas Turbine Located in Reno County, KS and shared with Evergy Kansas Central

## Key Milestones

- Begin on-site construction – H2 2026
- Major equipment deliveries – H2 2028
- Fuel Gas Available – H2 2028
- Commissioning – H2 2029
- Commercial Operation - H1 2030

***Reno County Combined Cycle Plant is anticipated to serve Missouri West customers in 2030***

# Nodaway County/Mullin Creek #1 Simple Cycle (EA-2025-0075)



## Overview of Project

- 2024 Integrated Resource Plan Triennial update identified ~415 MW need for thermal energy by 2030
- Evergy Missouri West received a Certificate of Convenience and Necessity (CCN) effective on August 10, 2025
- Mullin Creek #1 is 440MW Simple Cycle Gas Turbine located in Nodaway County, MO

## Key Milestones

- Begin on-site construction – Mid-2026
- Major equipment deliveries – H1 2029
- Fuel Gas Available – H1 2029
- Commissioning – H2 2029
- Commercial Operation - H1 2030

***Mullin Creek is anticipated to serve Missouri West customers in 2030***

# Grid Modernization Projects





# Grid Mod Benefits: Strategic Substation Modernization

Improve resiliency of critical assets while replacing aged assets with stronger, newer components

**Retire Liberty Moss 69/12kV Substation**  
Mo West  
~Retiring existing substation due to age and asset condition



**Install New Kent 69/12kV Substation**  
Mo West  
~Installed new substation across the highway, utilizing current design and phasing standards  
Completed December 2025



Before

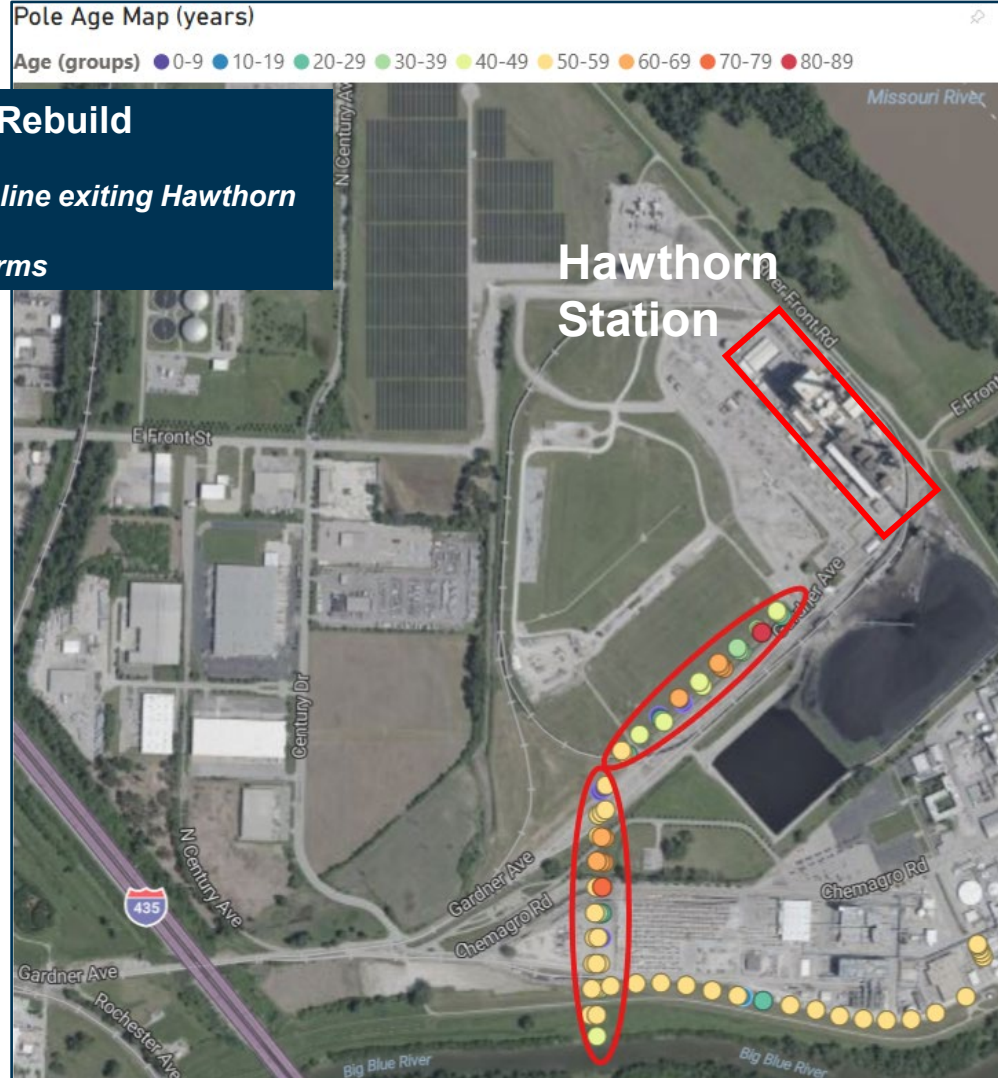


After



# Grid Mod Benefits: Distribution Asset Replacement

*Improve resiliency of critical assets while replacing aged assets with stronger, newer components*



**Hawthorn Distribution Line Rebuild**  
*Mo Metro*  
~Rebuild 6-circuit distribution mainline exiting Hawthorn Substation  
Replacing 54 poles and 111 crossarms



Before



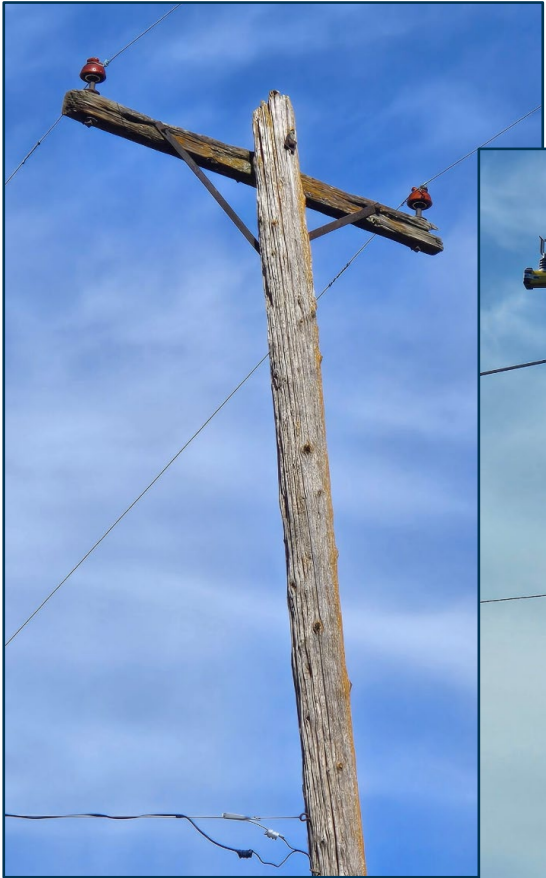
Before





# Grid Mod Benefits: Distribution Asset Replacement

*Improve resiliency of critical assets while replacing aged assets with stronger, newer components*

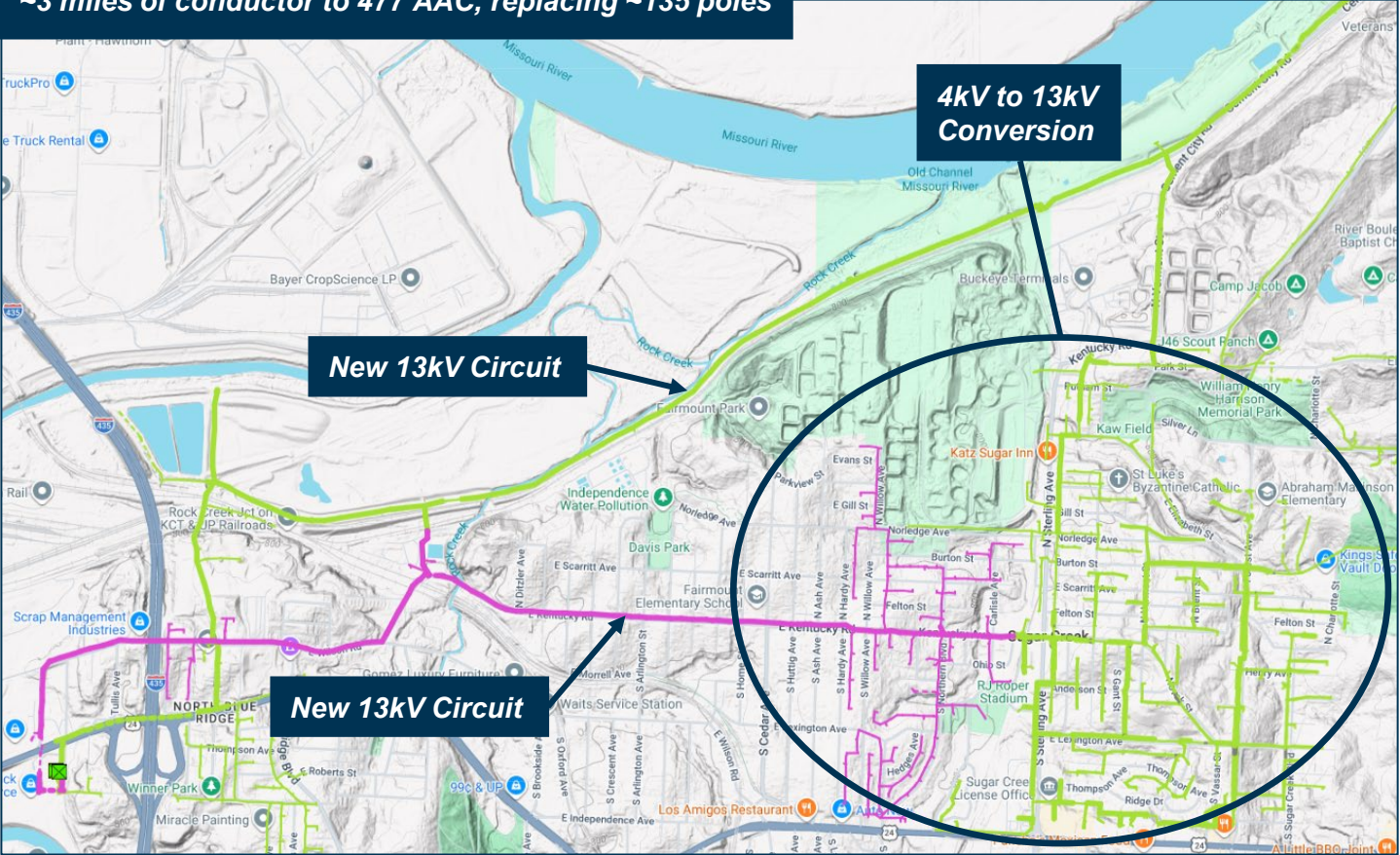


Before



In Progress

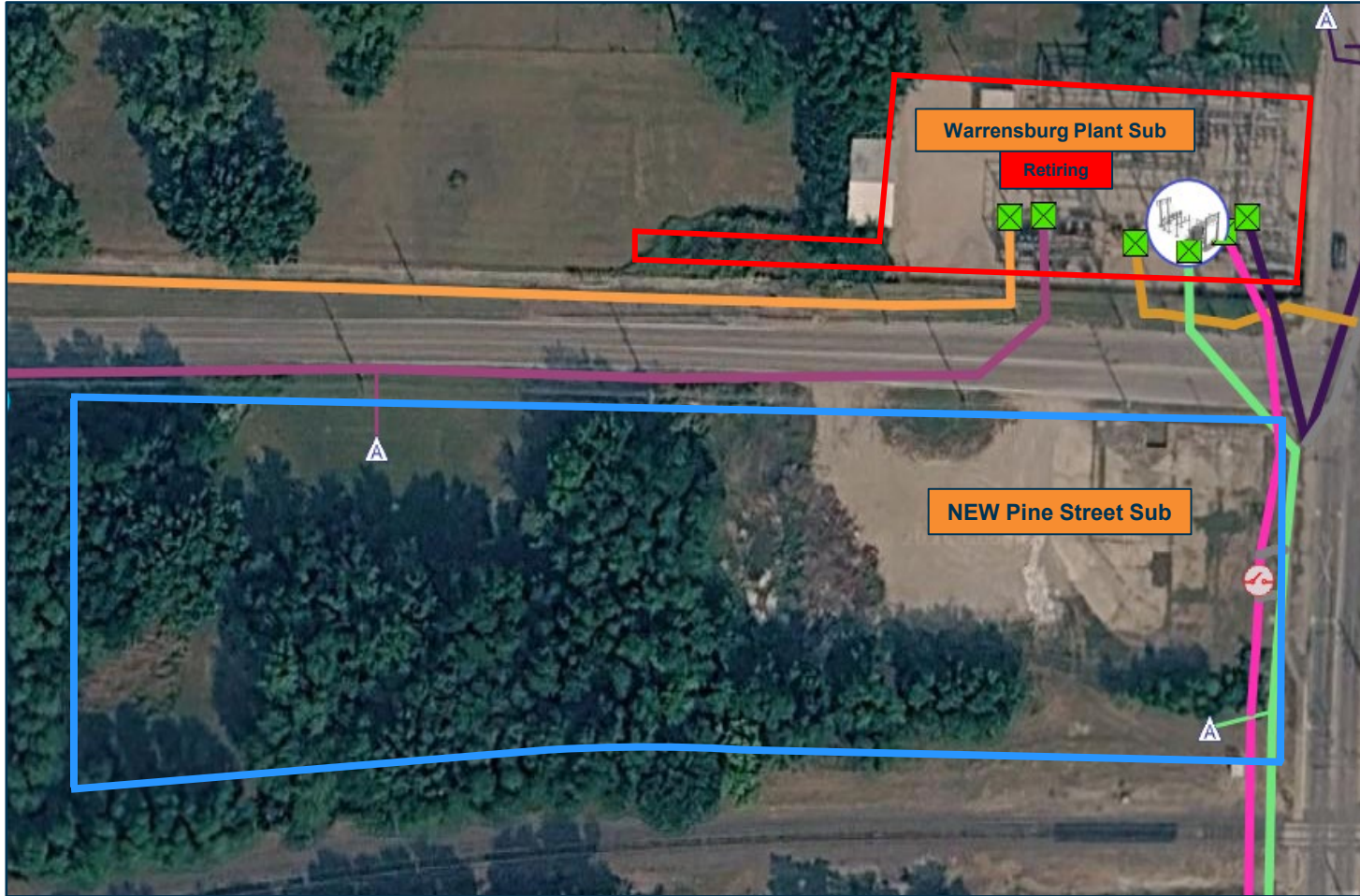
**Sugar Creek, MO Upgrades**  
**Mo Metro**  
Converting Sugar Creek from 4kV to 13kV, upgrading ~3 miles of conductor to 477 AAC, replacing ~135 poles





# Grid Mod Benefits: Strategic Substation Modernization

*Improve resiliency of critical assets while replacing aged assets with stronger, newer components*



**New Pine St Substation & 4kV to 12kV Conversion  
Mo West**  
~Convert remaining Warrensburg, MO 4kV to 12kV and relocating circuits to the new Pine Street Substation



**Before**

**Illustrative route shown**



# Grid Mod Benefits: Distribution Assets Replacement

*Programmatic plan improves reliability by upgrading aged equipment in residential, urban areas*

## “Major” Underground

Underground infrastructure feeding large parts of the system and large commercial customers

**\$41M**

2026-2030 spend



## Residential Underground

Underground infrastructure feeding residential customers / neighborhoods

**\$138M**

2026-2030 spend

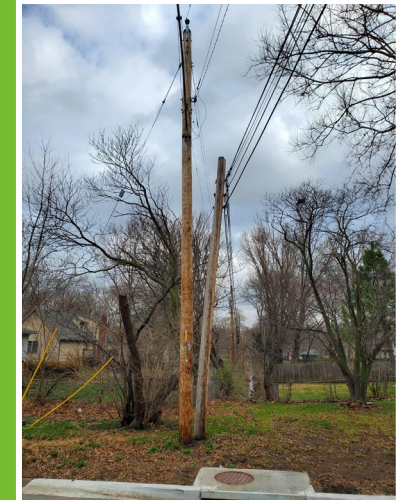


## Residential Overhead

Overhead infrastructure feeding residential customers / neighborhoods

**\$313M**

2026-2030 spend



***Asset replacements are prioritized based on condition data and likelihood of failure***

# Delivering On Grid Modernization Benefits

*Evergy's detailed grid modernization plans balance multiple, diverse stakeholder benefits*



**Based on identified potential benefits, specific projects or programmatic asset replacements are developed to deliver on these benefits**



# Evergy's Capital Investment Plan (2026-2030)

## Improves reliability and resiliency

- Replace aged infrastructure
- Deploy enhanced automation and communication

## Maintains affordability

- Rate impacts planned to be below SB 564 limits
- Cost increases less than expected inflation
- All of the above generation strategy including fuel free and highly efficient firm-dispatchable units

## Modernizes Fleet

- Concentration on resource adequacy and fleet modernization
- Deploy technology to enable distributed resources

## Improves customer experience

- Technology investment enables expanded digital, automated communications
- Investments in core systems maximizes benefit to customers

## Enhances economic development

- Improved cost competitiveness, reliability and sustainability to attract companies to the state
- Grid modernization capital expenditures drive economic growth

## Capital Plan Highlights

- Planning \$11.5B of infrastructure investment in Missouri 2026-2030
- More than 62% of 2026 spend will go directly to grid modernization<sup>1</sup>
- 2026-2030 spend will include investment in new efficient, dispatchable natural gas generation and renewables

## 2025 Progress

- Invested about \$1.2 billion in Missouri assets
- 57% spent on grid modernization projects<sup>1</sup>

<sup>1</sup>Adjusted to exclude removal, nuclear fuel, and new generating units and energy storage systems



# Questions And Feedback

*We want to hear from you!*



- **Chat**

- Submit written questions via the chat option during today's Q&A period
- Presenters will respond to questions as time allows during meeting



- **Raise hand**

- Use the "raise hand" icon at the top of the screen
- When called by meeting facilitator, unmute to ask your question



- **Email us**

- Send questions to [regulatory.affairs@evergy.com](mailto:regulatory.affairs@evergy.com)