

NEW FLORENCE TELEPHONE, LLC
f/k/a ORCHARD FARM TELEPHONE COMPANY
d/b/a RALLY NETWORKS

P.S.C. No. 7
4th Revised Adoption Notice
Cancels 3rd Revised Adoption Notice

ADOPTION NOTICE

GENERAL AND LOCAL EXCHANGE TARIFF

New Florence Telephone, LLC, d/b/a Rally Networks hereby adopts, ratifies, and makes (T)
its own in every respect, as if the same had been originally filed by it, all tariffs of Orchard Farm
Telephone Company filed with and approved by the Missouri Public Service Commission
before the effective date of this tariff.

This tariff contains the descriptions, regulations, and rates applicable to the furnishing (T)
of service and facilities for telecommunications services provided by New Florence Telephone, (T)
LLC, d/b/a Rally Networks within the state of Missouri. This tariff is on file with the Missouri (T)
Public Service Commission, and copies may be inspected during normal business hours at the
Company's principal place of business.

FILED - Missouri Public Service Commission - 04/10/2026 - IM-2026-0079 - JI-2026-0043

Issued: September 26, 2025

Garrin Bott, President
101 Main Street, P.O. Box 175
New Florence, MO 63363-0175

Effective: ~~January 1, 2026~~
April 10, 2026

NEW FLORENCE TELEPHONE, LLC
f/k/a ORCHARD FARM TELEPHONE COMPANY
d/b/a RALLY NETWORKS

P.S.C. No. 7
3rd Revised Title Page
Cancels 2nd Revised Title Page

NEW FLORENCE TELEPHONE, LLC
f/k/a ORCHARD FARM TELEPHONE COMPANY
d/b/a RALLY NETWORKS

(T)
|
(T)

FILED - Missouri Public Service Commission - 04/10/2026 - IM-2026-0079 - JI-2026-0043

SCHEDULE OF RATES
FOR
TELEPHONE SERVICE
APPLYING TO THE FOLLOWING TERRITORIES
ORCHARD FARM, MISSOURI

Issued: September 26, 2025

Garrin Bott, President
101 Main Street, P.O. Box 175
New Florence, MO 63363-0175

Effective: ~~January 1, 2026~~
April 10, 2026

GENERAL EXCHANGE TARIFF

P.S.C. MO No. 6
ORCHARD FARM TELEPHONE COMPANY.
d/b/a TDS Telecom
Missouri

Section 1
Original Contents Sheet 1

TABLE OF CONTENTS

SECTION 1	Table of Contents, General Subject Index and Symbols
SECTION 2	General Rules and Regulations
SECTION 3	Definitions
SECTION 4	Local Exchange Service
SECTION 5	Miscellaneous Service Arrangements
SECTION 6	Service Connection Charges
SECTION 7	Directory Services
SECTION 8	Optional Services
SECTION 9	Construction Charges
SECTION 10	Private Line Service
SECTION 11	Access Service

ISSUED: February 27, 2013

EFFECTIVE: March, 29, 2013

By: Joel Dohmeier, Vice-President

FILED
Missouri Public
Service Commission
JI-2013-0374

GENERAL EXCHANGE TARIFF

P.S.C. MO No. 6
ORCHARD FARM TELEPHONE COMPANY.
d/b/a TDS Telecom
Missouri

Section 2
Original Sheet 1

GENERAL REGULATIONS

CONCURRENCE

Orchard Farm Telephone Company. d/b/a TDS Telecom hereby assents to, adopts and concurs in the General Regulations as set forth in Section 2 of Stoutland Telephone Company, d/b/a TDS Telecom tariff, on file with the Missouri Public Service Commission and makes itself a party thereto and obligates itself to observe the provisions therein with the exceptions listed below.

EXCEPTIONS

No Exceptions

ISSUED: February 27, 2013

EFFECTIVE: March 29, 2013

By: Joel Dohmeier, Vice-President

FILED
Missouri Public
Service Commission
JI-2013-0374

GENERAL EXCHANGE TARIFF

P.S.C. MO No. 6
ORCHARD FARM TELEPHONE COMPANY.
d/b/a TDS Telecom
Missouri

Section 3
Original Sheet 1

DEFINITIONS

CONCURRENCE

Orchard Farm Telephone Company. d/b/a TDS Telecom hereby assents to, adopts and concurs in the Definitions as set forth in Section 3 of Stoutland Telephone Company, d/b/a TDS Telecom tariff, on file with the Missouri Public Service Commission and makes itself a party thereto and obligates itself to observe the provisions therein with the exceptions listed below.

EXCEPTIONS

No Exceptions

ISSUED: February 27, 2013

EFFECTIVE: March 29, 2013

By: Joel Dohmeier, Vice-President

FILED
Missouri Public
Service Commission
JI-2013-0374

GENERAL EXCHANGE TARIFF

**P.S.C. MO. No. 7
ORCHARD FARM TELEPHONE COMPANY
d/b/a MISSOURICOM**

**Section 4
Third Revised Sheet 1
Cancels Second Revised Sheet 1**

LOCAL EXCHANGE SERVICE

CONCURRENCE

Orchard Farm Telephone Company d/b/a Missouriicom hereby assents to, adopts and concurs in the Local Exchange Service as set forth in Section 4 of Stoutland Telephone Company d/b/a Missouriicom on file with the Missouri Public Service Commission and makes itself a party thereto and obligates itself to observe the provisions therein with the exceptions listed below.

(T)

(T)

EXCEPTIONS

BASIC ACCESS LINE SERVICE

Local rates for Residential and Business services are available at the Company's website:

<https://missouricom.co/tariff-charges/>

(N)

(N)

GENERAL EXCHANGE TARIFF

P.S.C. MO No. 7
ORCHARD FARM TELEPHONE COMPANY
Missouri

Section 4
First Revised Sheet 2
Replaces Original Sheet 2

LOCAL EXCHANGE SERVICE

EXCEPTIONS - Continued

(D)
|
(D)

SYSTEM PLUS CENTREX SERVICE (SPCS)

B. SYSTEM FEATURES

E. RATES AND CHARGES

b. The monthly rates for
Simulated Facility Trunks are:

	<u>Business Monthly Rate</u>	<u>Residence Monthly Rate</u>	
1) 1 to 6 Trunks, each	\$26.90	\$14.85	(I)
2) 7 and above, each	\$26.25	\$14.20	(I)

c. Individual Features:

1) Individual features will be provided in addition to the non-optional features included with the system, on a per line, per month, per feature basis.

e) Cancel Call Waiting NO CHARGE SPCCW

COMPANY PROVIDED OFF PREMISE EXTENSION

	<u>S&E Code</u>	<u>Per Month</u>
Business and Residence Telephone Mileage not to exceed ¼ mile	OPEXR	\$2.00
Mileage rates over ¼ mile will apply	OPEM4	\$3.00

ISSUED: April 29, 2016

EFFECTIVE: June 1, 2016

By: Garrin Bott, President

FILED
Missouri Public
Service Commission
JI-2016-0306

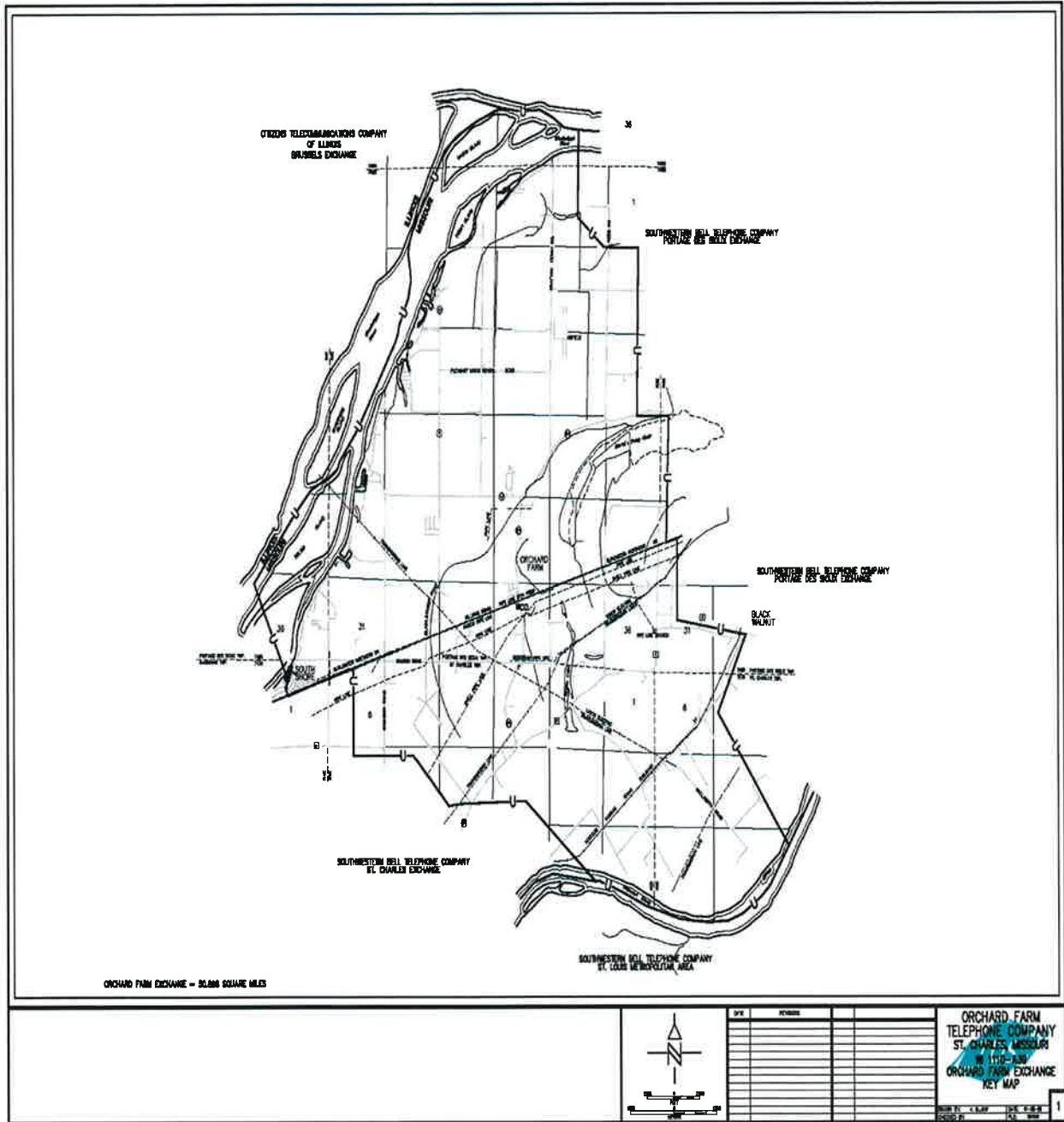
GENERAL EXCHANGE TARIFF

P.S.C. MO No. 6
ORCHARD FARM TELEPHONE COMPANY.
d/b/a TDS Telecom
Missouri

Section 4
Original Sheet 3

LOCAL EXCHANGE SERVICE

EXCHANGE BOUNDARY MAP



ISSUED: February 27, 2013

EFFECTIVE: March 29, 2013

By: Joel Dohmeier, Vice-President

FILED
Missouri Public
Service Commission
JI-2013-0374

GENERAL EXCHANGE TARIFF

P.S.C. MO No. 6
ORCHARD FARM TELEPHONE COMPANY.
d/b/a TDS Telecom
Missouri

Section 4
Original Sheet 4

LOCAL EXCHANGE SERVICE

EXCEPTIONS - Continued

OPTIONAL METROPOLITAN CALLING AREA (MCA) SERVICE

1. Service Description
 - a. Metropolitan Calling Area (MCA) service is available in three distinct metropolitan areas in Missouri (i.e., St. Louis, Kansas City, and Springfield) as provided by the Missouri Public Service Commission in its December 23, 1992, Report and Order in Case No. TO-92-306.
 - b. The St. Louis Metropolitan Exchange, as defined in Southwestern Bell's tariff, is included in the St. Louis MCA. The basic local calling scope for each of these exchanges is the MCA-wide calling scope as described in this tariff.
 - c. In selected exchanges, MCA service is an optional service which provides the subscriber with an optional local calling area which includes the respective Metropolitan Exchange and certain customers in other exchanges where MCA service is also available.
 - d. In each MCA, exchanges (and Metropolitan Exchange Zones) are grouped into different MCA rate classifications.
2. Availability of Service
 - a. MCA is an optional service available to subscribers located in the Orchard Farm exchange.
3. Calling Scope
 - a. Service Areas
 1. St. Louis MCA

The total service area for the St. Louis MCA is comprised of the following groups:

 - a. MCA-1 Zone of Ferguson, Ladue, Mehlville, Overland, Riverview, Sappington and Webster Groves; and the MCA-2 Zone of Bridgeton, Creve Coeur, Florissant, Kirkwood, Oakville and Spanish Lake.

ISSUED: February 27, 2013

EFFECTIVE: March 29, 2013

By: Joel Dohmeier, Vice-President

FILED
Missouri Public
Service Commission
JI-2013-0374

GENERAL EXCHANGE TARIFF

P.S.C. MO No. 6
ORCHARD FARM TELEPHONE COMPANY.
d/b/a TDS Telecom
Missouri

Section 4
Original Sheet 5

LOCAL EXCHANGE SERVICE

EXCEPTIONS - Continued

OPTIONAL METROPOLITAN CALLING AREA (MCA) SERVICE

3. Calling Scope (Continued)

a. Service Areas

1) St. Louis MCA

- (b) MCA-3 includes the following: exchanges of Portage Des Sioux, St. Charles, Chesterfield, Manchester, Valley Park, Fenton, Maxville, Imperial; and Orchard Farm Telephone Company's exchange of Orchard Farm.
- (c) MCA-4 includes the following: exchanges of Harvester, Pond, Eureka, High Ridge, Antonia, Herculaneum/Pevely; St. Peters, O'Fallon and Dardenne.
- (d) MCA-5 includes the following: exchanges of Gray Summit, Pacific, Cedar Hill, Ware, Hillsboro, Festus/Crystal City, Desoto, Beaufort, St. Clair, Union, Washington; Foristell, New Melle, Defiance, Augusta, Winfield, Moscow Mills and Troy.¹
- (e) MCA-6 includes the following exchanges of Foley, Holstein, Marthasville, Warrenton, and Wright City.²

b. Optional Calling Scopes

1) St. Louis MCA-3 calling scope

The calling scope for MCA subscribers in MCA-3 exchanges includes all customers in the Metropolitan Exchange, all customers in MCA-3 exchanges, and MCA subscribers in MCA-4, MCA-5 and MCA-6 exchanges.

2) St. Louis MCA-4 calling scope

The calling scope for MCA subscribers in MCA-4 exchanges includes all customers in the Metropolitan Exchange, all customers in MCA-3 and MCA-4 exchanges, and MCA subscribers in MCA-5 exchanges.

¹ Implementation of MCA-5 exchanges of Beaufont, St. Clair, Union and Washington its schedule for October 30, 2006.

² Implementation of MCA-6 its schedule for March 1, 2007.

GENERAL EXCHANGE TARIFF

P.S.C. MO No. 6
ORCHARD FARM TELEPHONE COMPANY.
d/b/a TDS Telecom
Missouri

Section 4
Original Sheet 6

LOCAL EXCHANGE SERVICE

EXCEPTIONS - Continued

OPTIONAL METROPOLITAN CALLING AREA (MCA) SERVICE

3. Calling Scope (Continued)

b. Optional Calling Scopes

3) St. Louis MCA-5 calling scope

The calling scope for MCA subscribers in MCA-5 exchanges includes all customers in the Metropolitan Exchange, all customers in MCA-3 and MCA-4 exchanges, and MCA subscribers in MCA-5 exchanges.

4) St. Louis MCA-6 calling scope

The calling scope for MCA subscribers in MCA-6 exchanges includes all customers in the Metropolitan Exchange, all customers in MCA-Central, MCA-1 through 5 exchanges, and MCA subscribers in MCA-6 exchanges.

4. Regulations

- a. Unless otherwise specified in these regulations, MCA is offered to all classes and grades of residence and business customers located in an MCA exchange.
- b. Optional MCA Service is not offered in conjunction with Public, Semi-Public, Customer-Owned Pay Telephone or Cellular Service.
- c. MCA is designed and intended for the exclusive use of the end user customers of the Telephone Company. MCA is not to be shared, resold or used in configuration of customer-provided equipment with the intent of reselling the service. MCA is available to interexchange carriers or other telecommunications service providers for administrative trunks only.
- d. In situations where multiple access lines share the same working telephone number, if one such line subscribers to MCA service, then all lines must subscribe to MCA service.
- e. In situations where a hunting arrangement between access lines is provided by the Telephone Company, no MCA line may be configured to hunt to a non-MCA line.
- f. Unless otherwise specified, MCA is subject to the Rules and Regulations applying to all customer contracts as specified in the General Exchange Tariff of the Telephone Company. Furthermore, all Rules and Regulations governing Local Exchange Service apply to MCA service.
- g. The minimum service period for subscription to Optional MCA Service is one month.

ISSUED: February 27, 2013

EFFECTIVE: March 29, 2013

By: Joel Dohmeier, Vice-President

FILED
Missouri Public
Service Commission
JI-2013-0374

GENERAL EXCHANGE TARIFF

P.S.C. MO No. 6
ORCHARD FARM TELEPHONE COMPANY,
d/b/a TDS Telecom
Missouri

Section 4

Original Sheet 7

LOCAL EXCHANGE SERVICE

EXCEPTIONS - Continued

OPTIONAL METROPOLITAN CALLING AREA (MCA) SERVICE

4. Regulations (Continued)

h. Rate Application

- 1) The MCA monthly rates specified apply on a per-line basis, except for Centrex type services, which are billed on a PBX trunk equivalent basis, as specified in the General Exchange tariff.
- 2) The MCA monthly rates are billed one month in advance.
- 3) Optional MCA rates and charges apply in addition to all other rates and charges paid by the customer for other services of the Telephone Company.
- i. Nonrecurring Service Equipment Charges are applicable on a per-line basis when a customer adds or deletes Optional MCA Service. These charges will be waived in an exchange for the first 60 days from the date that MCA Service becomes available in that exchange.

5. Rates and Charges

Phase 1 Rates:

(T)

a. Monthly Rates, per line:

	<u>Residence</u>	<u>Business</u>	
1) St. Louis MCA-3			
(a) Flat Rate Option	\$12.35 ¹	\$24.80	(T)

Phase 2 Rates: Effective May 28, 2013

(T)

a. Monthly Rates, per line:

1) St. Louis MCA-3			
(a) Flat Rate Option	\$11.60	\$24.80	(R)

b. Non-recurring Charges, per line

Service Order Charge, Subsequent	\$11.00	\$11.00	
Line Connection or Rearrangement Charge	\$20.00	\$20.00	

¹ Rates Effective through May 27, 2013

(T)

GENERAL EXCHANGE TARIFF

P.S.C. MO No. 7
ORCHARD FARM TELEPHONE COMPANY
Missouri

Section 5
First Revised Sheet 1
Replaces Original Sheet 1

MISCELLANEOUS SERVICES

CONCURRENCE

Orchard Farm Telephone Company hereby assents to, adopts and concurs in the Miscellaneous Services as set forth in Section 5 of Stoutland Telephone Company tariff on file with the Missouri Public Service Commission and makes itself a party thereto and obligates itself to observe the provisions therein with the exceptions listed below.

EXCEPTIONS

TOTAL TALK PACK

C.	RATES ¹		(D)
		<u>Rate Per Month</u>	(D)
1.	Residence ²		
	Local Bundle, per line		
	Basic Service	\$31.75	(I)
	Basic Service with Metropolitan Calling Area (MCA)	\$43.05	(I)
2.	Business ³		
	Local Bundle, per line		
	Basic Service	\$43.05	(I)
	Basic Service with Metropolitan Calling Area (MCA)	\$68.05	(I)

¹ Customers must also subscribe to Direct Long Distance.

² This service is grandfathered to existing customers effective January 7, 2009. The service will not be available to new customers after this date.

³ This service is grandfathered to existing customers effective December 30, 2010. The service will not be available to new customers after this date.

ISSUED: April 29, 2016

EFFECTIVE: June 1, 2016

By: Garrin Bott, President

FILED
Missouri Public
Service Commission
JI-2016-0306

GENERAL EXCHANGE TARIFF

P.S.C. MO No. 7
ORCHARD FARM TELEPHONE COMPANY
Missouri

Section 5
First Revised Sheet 2
Replaces Original Sheet 2

MISCELLANEOUS SERVICES

EXCEPTIONS - Continued

STAR PACKAGES³

A. General

1. The STAR Packages are optional service bundles. Each package permits a customer to receive services and features for a flat monthly rate, for each STAR Package subscriber line provided. The STAR Package options include the following services:

- a) 3 STAR Expanded Package
Includes: Residential One-Party Line, Unlimited Metro Calling, Caller ID Deluxe, Call Waiting/Cancel Call Waiting, Call Forwarding and Preferred Call Forwarding.²

The 3 STAR Package can be upgraded to include Anonymous Call Rejection, Three-Way calling, Priority Ringing, Special Call Acceptance, and Personal Voicemail. The charge for this upgrade is set forth in C.2 following.

- b) 4 STAR Expanded Package
Includes: Residential One-Party Line, Unlimited Metro Calling, Caller ID Deluxe, Call Waiting/Cancel Call Waiting, Call Forwarding, Preferred Call Forwarding, Anonymous Call Rejection, and 300 Minutes of Direct Long Distance¹ calling.

The 4 STAR Package can be upgraded to include Three-Way calling, Priority Ringing, Special Call Acceptance, and Personal Voicemail. The charge for this upgrade is set forth in C.2 following.

- c) 5 STAR Expanded Package
Includes: Residential One-Party Line, Unlimited Metro Calling, Caller ID Deluxe, Call Waiting/Cancel Call Waiting, Call Forwarding, 3-Way Calling, Anonymous Call Rejection, Priority Ringing, Special Call Acceptance, Preferred Call Forwarding, Personal Voice Mail, and Unlimited Direct Long Distance¹ calling.

A. Rates

1.	Residence	<u>Rate Per Month</u>	
a)	3 STAR Expanded Package, per line	\$31.99 ³	(l)
b)	4 STAR Expanded Package, per line	\$41.99 ³	(l)
c)	5 STAR Expanded Package, per line	\$51.99 ³	(l)
2.	Package Upgrade	\$ 5.00	
3.	Package Change Fee	\$ 7.50	

¹ Customers must also subscribe to the corresponding Direct Long Distance Plan.

² Customers subscribing to Direct Long Distance will receive 30 minutes of calling at no charge.

³ This service is grandfathered to existing customers effective June 1, 2016. The service will not be available to new customers after this date.

ISSUED: April 29, 2016

EFFECTIVE: June 1, 2016

By: Garrin Bott, President

FILED
Missouri Public
Service Commission
JI-2016-0306

GENERAL EXCHANGE TARIFF

P.S.C. MO No. 7
ORCHARD FARM TELEPHONE COMPANY
Missouri

Section 5
Third Revised Sheet 3
Replaces Second Revised Sheet 3

MISCELLANEOUS SERVICES

EXCEPTIONS – Continued

(D)
|
(D)

STAR BUSINESS BUNDLES²

A. General

1. The STAR Business Bundles are optional offerings that package services and features together for a flat monthly rate that is applicable to each STAR Business Bundle subscriber line provided. This offering is available to 1–3 line business customers. There are 2 STAR Business Bundle options.

a) STAR Business Bundle – Expanded¹
Includes: Business One-Party Line, Touch Tone, 3 Features chosen from the following list: Caller ID Deluxe, Call Forwarding, Call Forward Remote Access, Call Waiting/Cancel Call Waiting, 3-Way Calling, or Voice Mail, and 200 Minutes of Metro Calling and Direct Long Distance³ calling.

b) STAR Business Bundle – Unlimited Expanded¹
Includes: Business One-Party Line, Touch Tone, 3 Features chosen from the following list: Caller ID Deluxe, Call Forwarding, Call Forward Remote Access, Call Waiting/Cancel Call Waiting, 3-Way Calling, or Voice Mail, and Unlimited Minutes of Metro Calling and Direct Long Distance³ calling.

(T)

C. Rates

Rate Per Month¹

1.	Business, Per Line	
	a) STAR Business Bundle Expanded	\$41.99 ²
	b) STAR Business Bundle Unlimited Expanded	\$61.99 ²
2.	Service Order Charge	\$10.00

¹ One, Two, and Three-Year Contract rates are also available.

² This service is grandfathered to existing customers effective June 1, 2016. The service will not be available to new customers after this date.

³ Customers must also subscribe to the corresponding Direct Long Distance plan.

ISSUED: August 2, 2016

EFFECTIVE: October 1, 2016

By: Garrin Bott, President

FILED
Missouri Public
Service Commission
JI-2017-0023

GENERAL EXCHANGE TARIFF

P.S.C. MO No. 7

Section 5

ORCHARD FARM TELEPHONE COMPANY

~~Third Revised Sheet 4~~ ~~First Revised Sheet 4~~

Missouri

~~Replaces Second Revised Sheet 4~~ ~~Replaces Original Sheet 4~~

MISCELLANEOUS SERVICES

EXCEPTIONS - Continued

SECURITY LINE SERVICE²

C. RATES AND CHARGES

Monthly Rate

Bundle Base Rate

\$41.95¹

(l)

¹ Other data speeds may be available for an additional charge.

² This service is grandfathered to existing customers effective June 1, 2016. The service will not be available to new customers after this date.

ISSUED: April 29, 2016

EFFECTIVE: June 1, 2016

By: Garrin Bott, President

FILED
Missouri Public
Service Commission
JI-2016-0306

GENERAL EXCHANGE TARIFF

**P.S.C. MO. No. 7
ORCHARD FARM TELEPHONE COMPANY
d/b/a MISSOURICOM**

**Section 6
1st Revised Sheet 1
Cancels Original Sheet 1**

SERVICE CONNECTION CHARGES

CONCURRENCE

Orchard Farm Telephone Company d/b/a Missouriicom hereby assents to, adopts and concurs in (T)
the Service Connection Charges as set forth in Section 6 of Stoutland Telephone Company d/b/a (T)
Missouricom tariff, on file with the Missouri Public Service Commission and makes itself a
party thereto and obligates itself to observe the provisions therein with the excepts listed below.

(D)

GENERAL EXCHANGE TARIFF

P.S.C. MO No. 7
ORCHARD FARM TELEPHONE COMPANY
Missouri

Section 7
First Revised Sheet 1
Replaces Original Sheet 1

DIRECTORY SERVICES

HOLD FOR FUTURE USE

(D)

(D)

ISSUED: February 17, 2016

EFFECTIVE: March 18, 2016

By: Garrin Bott, President

FILED
Missouri Public
Service Commission
JI-2016-0218

GENERAL EXCHANGE TARIFF

P.S.C. MO. NO. 6
ORCHARD FARM TELEPHONE COMPANY
Missouri

Section 8

Original Sheet 1

OPTIONAL SERVICES

CONCURRENCE

Orchard Farm Telephone Company, d/b/a TDS Telecom hereby assents to, adopts and concurs in the Optional Services as set forth in Section 8 of Stoutland Telephone Company, d/b/a TDS Telecom tariff, on file with the Missouri Public Service Commission and makes itself a party thereto and obligates itself to observe the provisions therein with the exceptions listed below.

EXCEPTIONS

CUSTOM CALLING SERVICES

B. Service Descriptions

17. **Call Forward – Remote Access**

This service is an additive to the Call Forwarding service and allows the customer to activate and deactivate Call Forwarding from a telephone in another location. All calls forwarded are subject to transmission limitations and all applicable local and long distance charges.

D. Rates And Discounts

1. Rates

<u>One Service Per Line</u>	<u>Rate Per Month</u>	<u>Trans Code</u>	<u>Activation Code</u>	<u>Deactivation Code</u>
a. Call Forwarding	\$1.95	CCCF	*72	*73
d. Call Hold	2.00	CCCH	*52	N/A
e. 3-Way Calling	1.95	CCCC	N/A	N/A
f. Call Transfer	0.95	CCCT	N/A	N/A
g. Call Waiting/Cancel Call Waiting	2.75	CWCCW	N/A/*70	N/A
h. Home Intercom-Basic	0.95	CCHI	N/A	N/A
i. Warm Line	0.95	CCWL	N/A	N/A
j. Hotline	0.95	CCHT	N/A	N/A
k. Personal Ringing				
1) Second Directory Number	3.25	CPR2	N/A	N/A
2) Third Directory Number ¹	1.00 (incremental)	CPR3	N/A	N/A
l. Speed Call 8	1.95	CCSE	*74	N/A
m. Speed Call 30	2.75	CCST	*75	N/A
n. Do-Not-Disturb	0.95	CCDD	*78	*79
			(*10 for Override)	
o. Call Reminder	0.95	CCCR	*95	*96
q. Call Forward-Remote Access ¹ (Additive to Call Forwarding)	1.25	CCFM	N/A	N/A

ISSUED: February 27, 2013

EFFECTIVE: March 29, 2013

BY: Joel Dohmeier, Vice President

FILED
Missouri Public
Service Commission
JI-2013-0374

GENERAL EXCHANGE TARIFF

P.S.C. MO. NO. 6
ORCHARD FARM TELEPHONE COMPANY
Missouri

Section 8
Original Sheet 2

OPTIONAL SERVICES

CUSTOM CALLING SERVICES (Continued)

D. Rates And Discounts (Continued)

3. Pay-Per-Use Rates

	<u>Per Successful Activation</u>	<u>Monthly Cap</u>
a. Three-Way Calling	\$0.75	\$4.50
b. Call Forwarding	0.75	4.50

ISSUED: February 27, 2013

EFFECTIVE: March 29, 2013

BY: Joel Dohmeier, Vice President

FILED
Missouri Public
Service Commission
JI-2013-0374

GENERAL EXCHANGE TARIFF

P.S.C. MO No. 6
ORCHARD FARM TELEPHONE COMPANY.
d/b/a TDS Telecom
Missouri

Section 9
Original Sheet 1

CONSTRUCTION CHARGES

CONCURRENCE

Orchard Farm Telephone Company. d/b/a TDS Telecom hereby assents to, adopts and concurs in the Construction Charges as set forth in Section 9 of Stoutland Telephone Company, d/b/a TDS Telecom tariff, on file with the Missouri Public Service Commission and makes itself a party thereto and obligates itself to observe the provisions therein with the exceptions listed below.

EXCEPTIONS

No Exceptions

ISSUED: February 27, 2013

EFFECTIVE: March 29, 2013

By: Joel Dohmeier, Vice-President

FILED
Missouri Public
Service Commission
JI-2013-0374

GENERAL EXCHANGE TARIFF

P.S.C. MO No. 6
ORCHARD FARM TELEPHONE COMPANY.
d/b/a TDS Telecom
Missouri

Section 10
Original Sheet 1

PRIVATE LINE SERVICES

CONCURRENCE

Orchard Farm Telephone Company. d/b/a TDS Telecom hereby assents to, adopts and concurs in the Private Line Services as set forth in Section 10 of Stoutland Telephone Company, d/b/a TDS Telecom tariff, on file with the Missouri Public Service Commission and makes itself a party thereto and obligates itself to observe the provisions therein with the exceptions listed below.

EXCEPTIONS

No Exceptions

ISSUED: February 27, 2013

EFFECTIVE: March 29, 2013

By: Joel Dohmeier, Vice-President

FILED
Missouri Public
Service Commission
JI-2013-0374

GENERAL EXCHANGE TARIFF

P.S.C. MO. No. 7
ORCHARD FARM TELEPHONE COMPANY
d/b/a MISSOURICOM

Section 11
Fourth Revised Sheet 1
Cancels Third Revised Sheet 1

ACCESS SERVICES

CONCURRENCE

Orchard Farm Telephone Company hereby assents to, adopts and concurs in the Access Services as set forth in Section 11 of Stoutland Telephone Company tariff, on file with the Missouri Public Service Commission and makes itself a party thereto and obligates itself to observe the provisions therein with the exceptions listed below.

EXCEPTIONS

D. RATES AND CHARGES

1.	<u>Common Line Access Service</u>		Tariff Section Reference
(a)	<u>Intrastate Carrier Common Line Access</u>	<u>Rate</u>	<u>Reference</u>
	- Originating	\$0.02400	3.6
	- Terminating	\$0.00	3.6
2.	<u>Switched Access Service</u>		Tariff Section Reference
(b)	<u>Local Transport</u>	<u>Rate</u>	<u>Reference</u>
4.	<u>Tandem Switched Transport</u>		
b.	<u>Tandem Switched Termination</u>		
	Per Access Minute Per Termination		6.2(A)(3)(c)
	- Originating	\$0.004178	
(c)	<u>End Office</u>		
1.	<u>Local Switching, Per Access Minute</u>		6.2(B)(1)
	- Originating	\$0.026700	(C)

**The Company concurs with the rates, terms and conditions of NECA's Tariff FCC No. 5 for this element, which (T)
can be viewed at <https://www.neca.org/member-services/tariff-5>

Issued: June 15, 2021

Garrin Bott, President
101 Main Street, P.O. Box 175
New Florence, MO 63363-0175

Effective: July 1, 2021

FILED
Missouri Public
Service Commission
JI-2021-0240

GENERAL EXCHANGE TARIFF

**P.S.C. MO. No. 7
ORCHARD FARM TELEPHONE COMPANY
d/b/a MISSOURICOM**

**Section 11
1st Revised Sheet 1.1
Cancels Original Sheet 1.1**

ACCESS SERVICES

D. RATES AND CHARGES

2. Switched Access Service (Cont'd)

(d) 8YY (Toll Free) Originating Access Services

(1) End Office Switching			(N)
<u>Local Switching</u> (per minute)			
July 1, 2021 – June 30, 2022		\$0.0267	
July 1, 2022 – June 30, 2023		\$0.01335	
After July 1, 2023		\$0.00	
<u>Information Surcharge</u> (per 100 access minutes)			
July 1, 2021 – June 30, 2022		\$0.0397	
July 1, 2022 – June 30, 2023		\$0.01985	
After July 1, 2023		\$0.00	
(2) Joint Tandem Switched Transport		**	(N)
(3) Toll Free Data Base Access		**	

**The Company concurs with the rates, terms and conditions of NECA's Tariff FCC No. 5 for this element, which can be viewed at <https://www.neca.org/member-services/tariff-5>

Issued: July 26, 2021

Garrin Bott, President
101 Main Street, P.O. Box 175
New Florence, MO 63363-0175

Effective: August 5, 2021

**FILED
Missouri Public
Service Commission
JI-2022-0018**

GENERAL EXCHANGE TARIFF

P.S.C. MO No. 6
ORCHARD FARM TELEPHONE COMPANY.
d/b/a TDS Telecom
Missouri

Section 11
Original Sheet 2

ACCESS SERVICES

EXCEPTIONS (Continued)

D. **RATES AND CHARGES** (Continued)

4 Billing and Collection Service

	<u>Rates</u>	<u>Tariff Section Reference</u>
j. Message Billed Service in which one or more messages or message service related elements are billed, per bill rendered to a customer end user account per month	\$0.58	8.2.1(G)

ISSUED: February 27, 2013

EFFECTIVE: March 29, 2013

By: Joel Dohmeier, Vice-President

FILED
Missouri Public
Service Commission
JI-2013-0374