

APPENDICES

- A Excerpts from the Franklin County, Missouri FIS, April 16, 1984
- B Final Flood Elevation Determination Letter from FEMA to Franklin County, Missouri Dated April 18, 2011
- C Excerpts from the Franklin County, Missouri FIS and FIRM, Effective October 18, 2011
- D Floodplain Development Permit
- E SEMA Engineering “No-Rise” Certificate
- F Relevant Correspondence for Current Effective Model
- G Velocity Sections – Existing Conditions – Floodway Off, 674,000 cfs
- H Velocity Sections – Existing Conditions – Floodway On, 674,000 cfs
- I Velocity Sections – Proposed Conditions – Floodway Off, 674,000 cfs
- J Velocity Sections – Proposed Conditions – Floodway On, 674,000 cfs
- K HEC-RAS Output 1st Page for Currently Effective Model, Duplicate Effective Model, Existing Conditions Model, and Proposed Conditions Model

APPENDIX A

Excerpts from the Franklin County, Missouri
FIS, April 16, 1984

FLOOD INSURANCE STUDY



FRANKLIN COUNTY, MISSOURI

UNINCORPORATED AREAS



APRIL 16, 1984



Federal Emergency Management Agency

COMMUNITY NUMBER - 290493

FLOODING SOURCE		FLOODWAY			BASE FLOOD WATER SURFACE ELEVATION			
CROSS SECTION	DISTANCE ¹	WIDTH ² (FEET)	SECTION AREA (SQ. FEET)	MEAN VELOCITY (FEET/SEC.)	REGULATORY (FEET NGVD)	WITHOUT FLOODWAY (FEET NGVD)	WITH FLOODWAY (FEET NGVD)	INCREASE (FEET)
MISSOURI RIVER								
A	50.0	8303/1600	134,821	4.6	474.1	474.1	474.9	0.8
B	51.0	6117/1100	104,230	6.0	474.4	474.4	475.2	0.8
C	52.0	4526/960	87,429	7.1	475.1	475.1	475.9	0.8
D	53.0	4820/300	94,745	6.5	476.3	476.3	477.2	0.9
E	54.0	6391/0	114,004	5.4	477.4	477.4	478.3	0.9
F	55.0	7244/0	145,234	4.3	479.0	479.0	480.0	1.0
G	55.5	5535/0	126,937	4.9	479.3	479.3	480.2	0.9
H	56.0	4768/3500	99,775	6.2	479.3	479.3	480.2	0.9
I	56.5	4055/3250	86,343	7.2	479.3	479.3	480.2	0.9
J	57.0	4126/4126	93,650	6.6	480.0	480.0	480.9	0.9
K	58.0	4549	89,299	6.9	480.5	480.5	481.5	1.0
L	59.0	8829/5300	173,116	3.6	482.7	482.7	483.7	1.0
M	60.0	9227/3500	181,863	3.4	483.4	483.4	484.3	0.9
N	61.0	9363/2600	183,000	3.4	483.8	483.8	484.7	0.9
O	62.0	8073/1600	160,187	3.9	484.1	484.1	485.0	0.9
P	63.0	5350/535	125,798	4.9	484.3	484.3	485.3	1.0
Q	64.0	3335/750	77,192	8.0	484.4	484.4	485.3	0.9
R	65.0	3013/1413	70,868	8.8	485.3	485.3	486.2	0.9
S	70.0	6566/3050	105,296	5.9	492.8	492.8	493.6	0.8
T	71.0	6242/4400	122,848	5.0	494.1	494.1	494.9	0.8
U	72.0	4496/3760	82,996	7.5	494.3	494.3	495.2	0.9
V	73.0	3421/2250	69,206	9.0	495.1	495.1	495.9	0.8
W	74.0	3166/1200	71,775	8.6	496.1	496.1	497.0	0.9
X	75.0	2861/790	74,628	8.3	497.3	497.3	498.2	0.9
Y	76.0	4091/480	94,963	6.5	498.5	498.5	499.4	0.9
Z	77.0	4578/840	102,431	6.0	499.7	499.7	500.6	0.9

¹MILES ABOVE CONFLUENCE WITH MISSISSIPPI RIVER

²TOTAL WIDTH/WIDTH WITHIN UNINCORPORATED AREA

TABLE 2

FEDERAL EMERGENCY MANAGEMENT AGENCY

FRANKLIN COUNTY, MO
(UNINCORPORATED AREAS)

FLOODWAY DATA

MISSOURI RIVER

FLOODING SOURCE		FLOODWAY			BASE FLOOD WATER SURFACE ELEVATION			
CROSS SECTION	DISTANCE ¹	WIDTH ² (FEET)	SECTION AREA (SQ. FEET)	MEAN VELOCITY (FEET/SEC.)	REGULATORY (FEET NGVD)	WITHOUT FLOODWAY (FEET NGVD)	WITH FLOODWAY (FEET NGVD)	INCREASE (FEET)
MISSOURI RIVER								
AA	78.0	5010/893	95,610	6.5	500.0	500.0	500.9	0.9
AB	79.0	5614/525	107,182	5.8	501.0	501.0	501.9	0.9
AC	80.0	4066/625	78,992	7.8	501.3	501.3	502.1	0.8
AD	83.0	6695/3550	101,874	6.1	504.8	504.8	505.7	0.9
AE	84.0	8609/7550	190,542	3.2	507.1	507.1	508.0	0.9
AF	85.0	8238/7508	157,280	3.9	507.2	507.2	508.2	1.0
AG	86.0	7689/6510	132,197	5.0	507.3	507.3	508.3	1.0
AH	87.0	7622/6700	144,586	4.3	508.2	508.2	509.2	1.0
AI	88.0	6802/6038	137,686	4.5	508.7	508.7	509.7	1.0
AJ	89.0	5518/4625	99,360	6.2	509.0	509.0	509.9	0.9
AK	90.0	5383/4725	97,197	6.4	509.9	509.9	510.8	0.9
AL	91.0	6298/5000	104,769	5.9	511.0	511.0	511.9	0.9
AM	92.0	5694/2100	100,136	6.2	511.9	511.9	512.8	0.9
AN	93.0	4494/550	96,267	6.4	513.0	513.0	513.9	0.9
AO	94.0	3295/570	71,243	8.7	513.6	513.6	514.5	0.9

¹ MILES ABOVE CONFLUENCE WITH MISSISSIPPI RIVER

² TOTAL WIDTH/WIDTH WITHIN UNINCORPORATED AREA

TABLE 2

FEDERAL EMERGENCY MANAGEMENT AGENCY

FRANKLIN COUNTY, MO
(UNINCORPORATED AREAS)

FLOODWAY DATA

MISSOURI RIVER

FLOODING SOURCE	PANEL ¹	ELEVATION DIFFERENCE ² BETWEEN 1.0% (100-YEAR) FLOOD AND			FLOOD HAZARD FACTOR	ZONE	BASE FLOOD ELEVATION ³ (NGVD)
		10% (10-YEAR)	2% (50-YEAR)	0.2% (500-YEAR)			
MISSOURI RIVER REACH 1	0025,0045, 0075,0080, 0085,0092, 0105,0106, 0108,0115	-4.8	-1.6	2.6	050	A10	VARIES-SEE MAP
MERAMEC RIVER REACH 1	0170,0180, 0185,0187, 0190,0250' 0255	-7.1	-1.9	4.3	070	A14	VARIES-SEE MAP
REACH 2	0240,0250, 0255	-4.8	-1.3	2.7	050	A10	VARIES-SEE MAP
REACH 3	0240	-6.3	-1.7	3.4	065	A13	VARIES-SEE MAP
LITTLE MERAMEC RIVER REACH 1	0255	-1.7	-0.5	1.0	015	A3	VARIES-SEE MAP
REACH 2	0255	-1.9	-0.5	1.2	020	A4	VARIES-SEE MAP

¹FLOOD INSURANCE RATE MAP PANEL

²WEIGHTED AVERAGE

³ROUNDED TO NEAREST FOOT

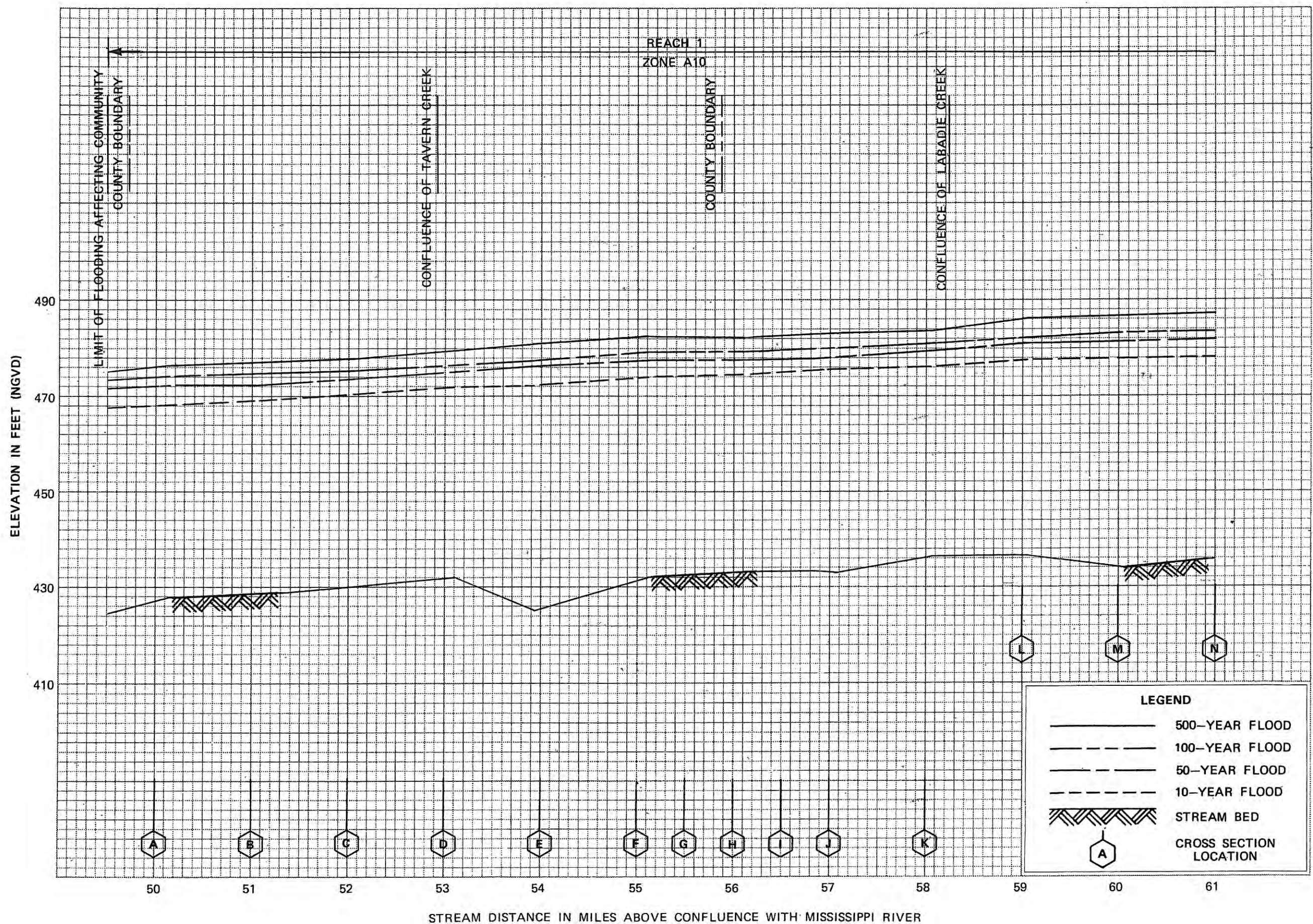
TABLE 3

FEDERAL EMERGENCY MANAGEMENT AGENCY

FRANKLIN COUNTY, MO
(UNINCORPORATED AREAS)

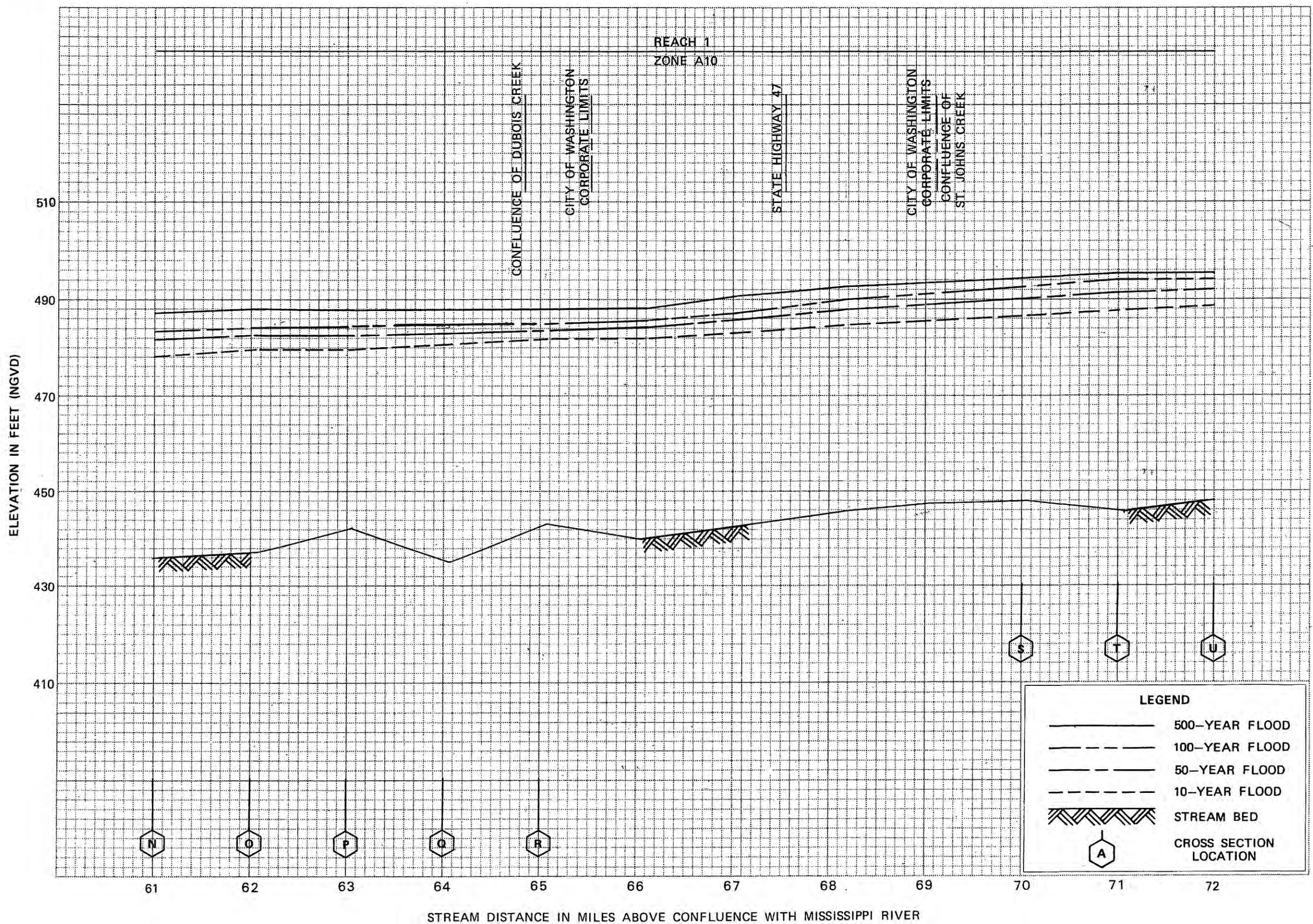
FLOOD INSURANCE ZONE DATA

MISSOURI RIVER - MERAMEC RIVER - LITTLE MERAMEC RIVER



FLOOD PROFILES
MISSOURI RIVER

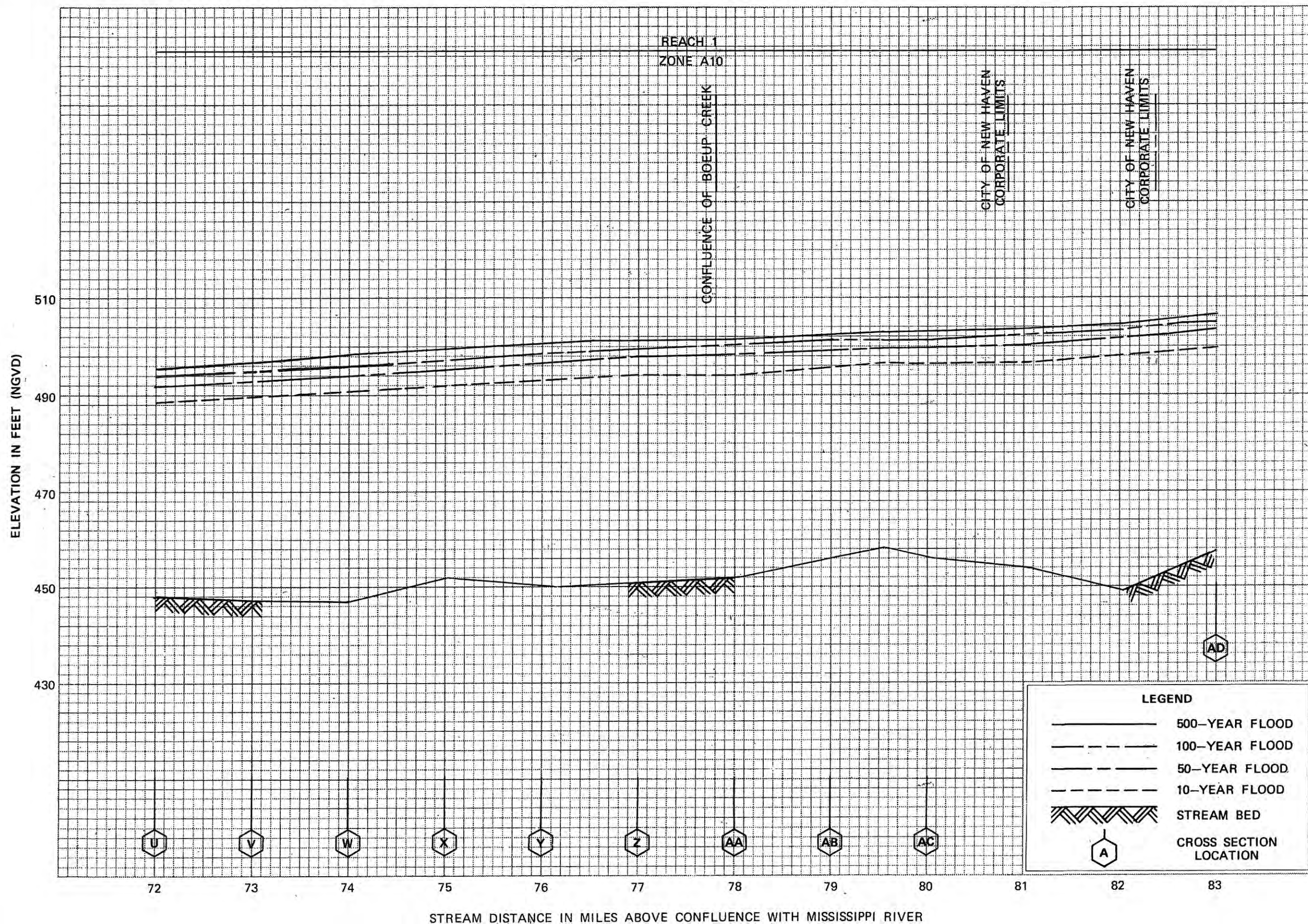
FEDERAL EMERGENCY MANAGEMENT AGENCY
FRANKLIN COUNTY, MO
(UNINCORPORATED AREAS)



FLOOD PROFILES

MISSOURI RIVER

FEDERAL EMERGENCY MANAGEMENT AGENCY
FRANKLIN COUNTY, MO
(UNINCORPORATED AREAS)



FLOOD PROFILES

MISSOURI RIVER

FEDERAL EMERGENCY MANAGEMENT AGENCY

FRANKLIN COUNTY, MO
(UNINCORPORATED AREAS)

03P

APPENDIX B

Final Flood Elevation Determination Letter
from FEMA to Franklin County, Missouri
Dated April 18, 2011