

LOCATION OF STRANDED CUSTOMERS

<u>Line</u>	<u>Map/Section No.</u>	<u>Description</u>	<u>Estimated Cost</u>
(1)	12-14	0.03 miles of 1Ø #2 ACSR tie line	\$1,500
(2)	12-14	Deleted	**
(3)	12-14	0.75 miles of 3Ø 1/0 ACSR tie line and conversion	\$144,500
(4)	12-24	0.50 miles of 3Ø 477 ACSR	*

* Line already included in "Relocation Cost of Lines to Maintain Existing Backfeed Capacity" (See Exhibit JEL-3)

** Item deleted as map incorrect.

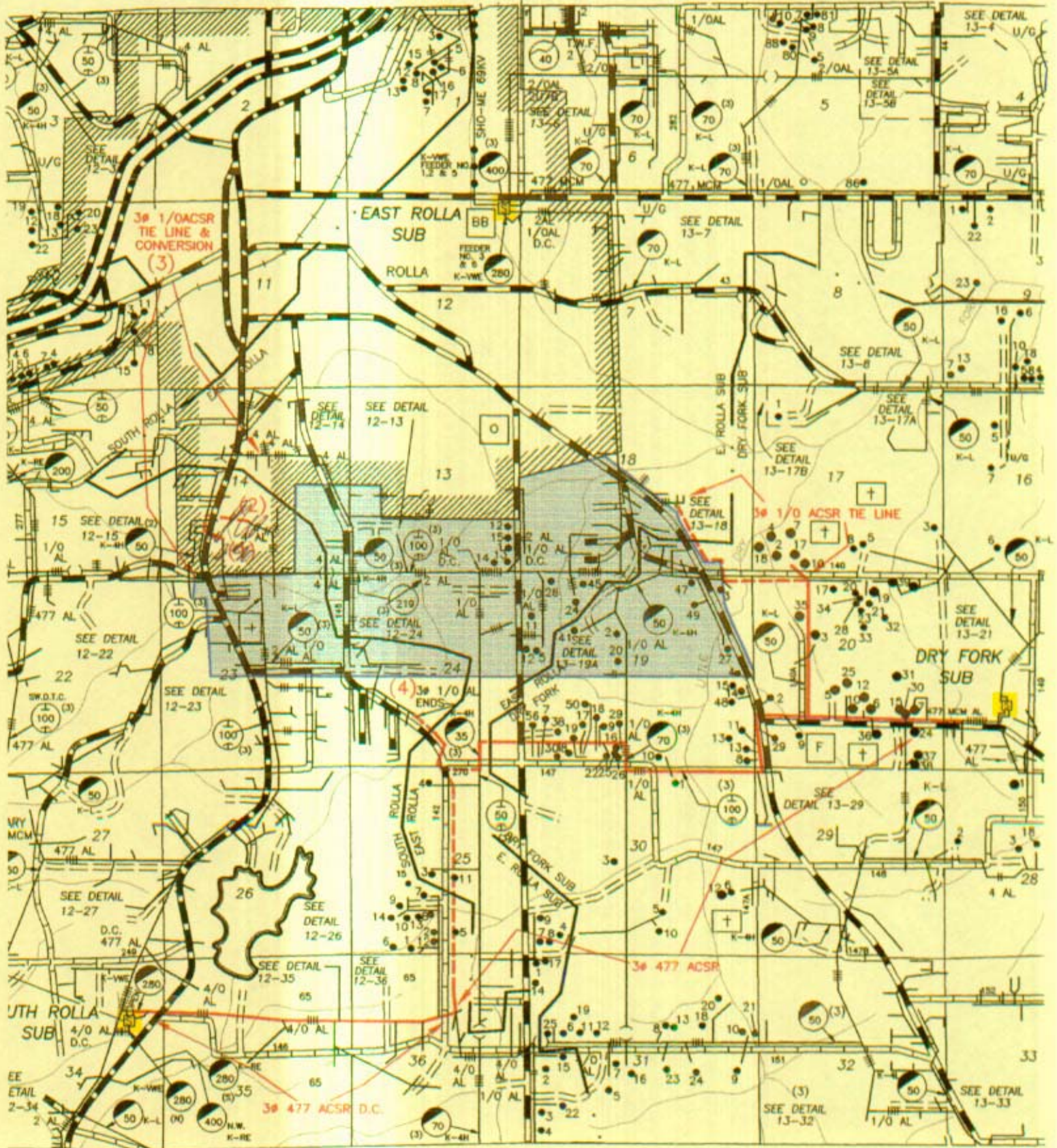
Exhibit No. 24
Date 12-5-00 Case No. EA-2000-308
Reporter 48

DATA REQUEST

131. Provide a copy of all the source material you relied upon for your \$150,000 estimate appearing on Page 9 at line 9.

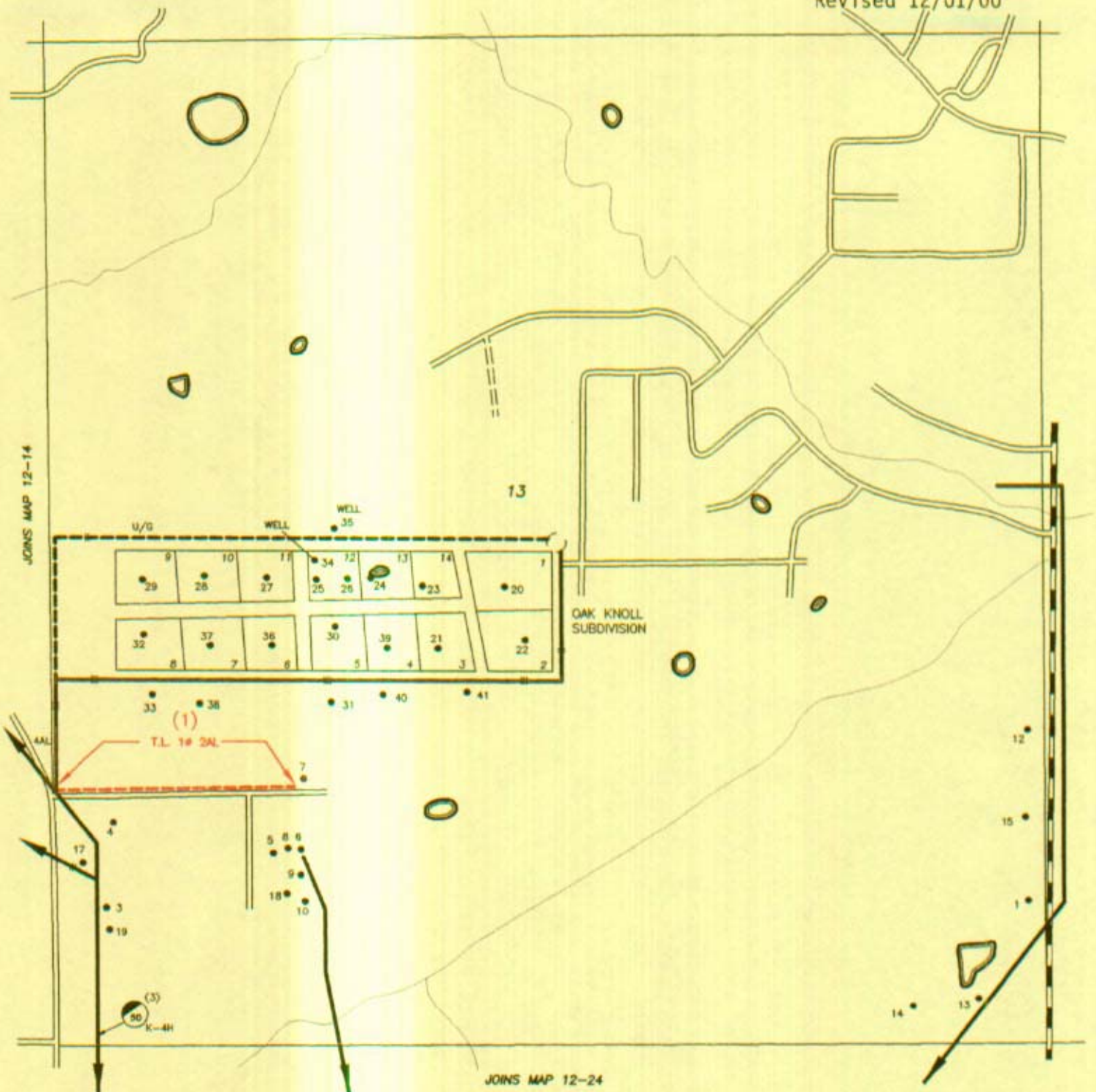
RESPONSE

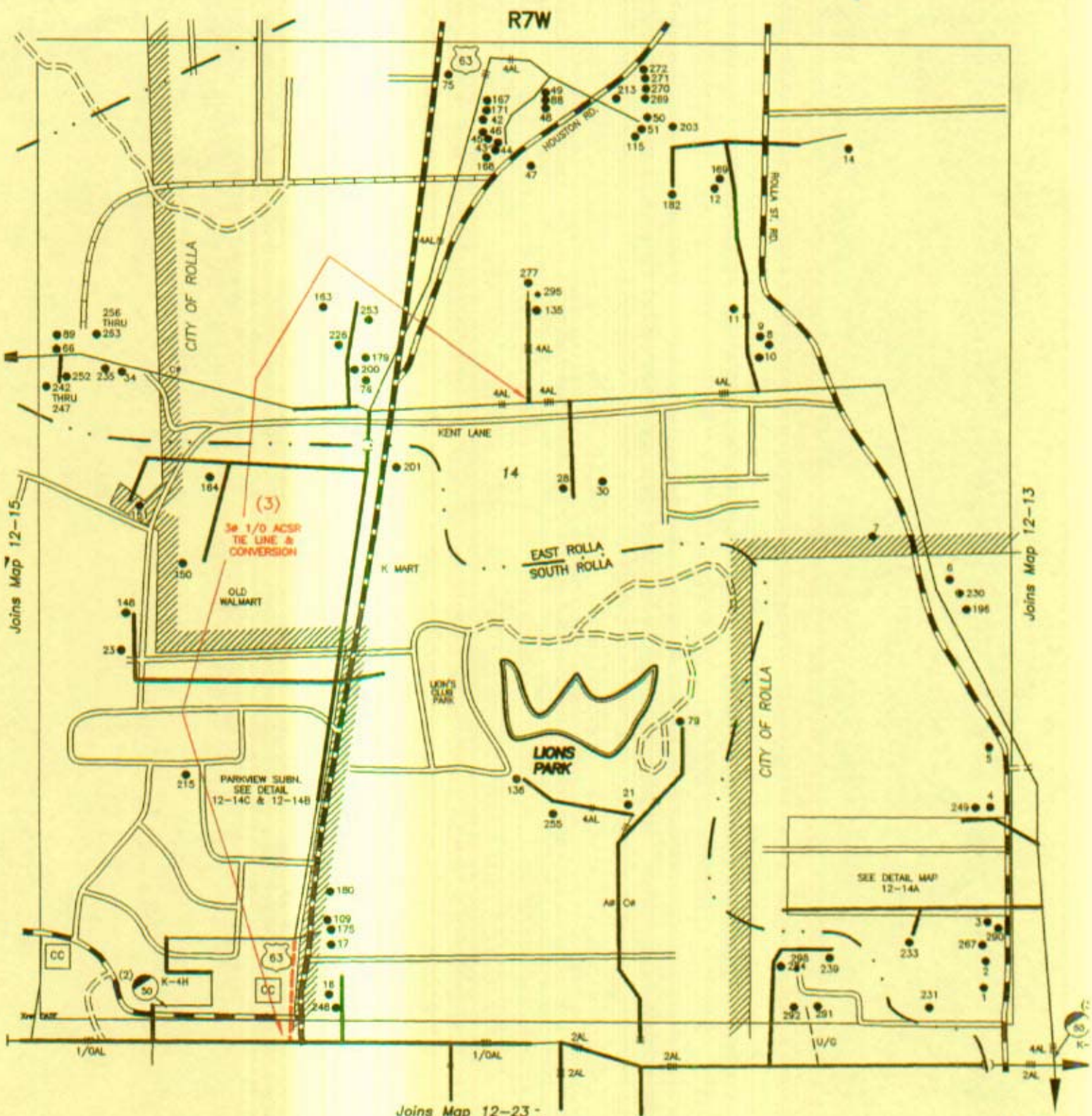
See Exhibit JEL-11.



K&W

Exhibit JEL-11
Case EA-2000-308
Revised 12/01/00





Joins Map 12-23
T37N, RBW SECTION 14