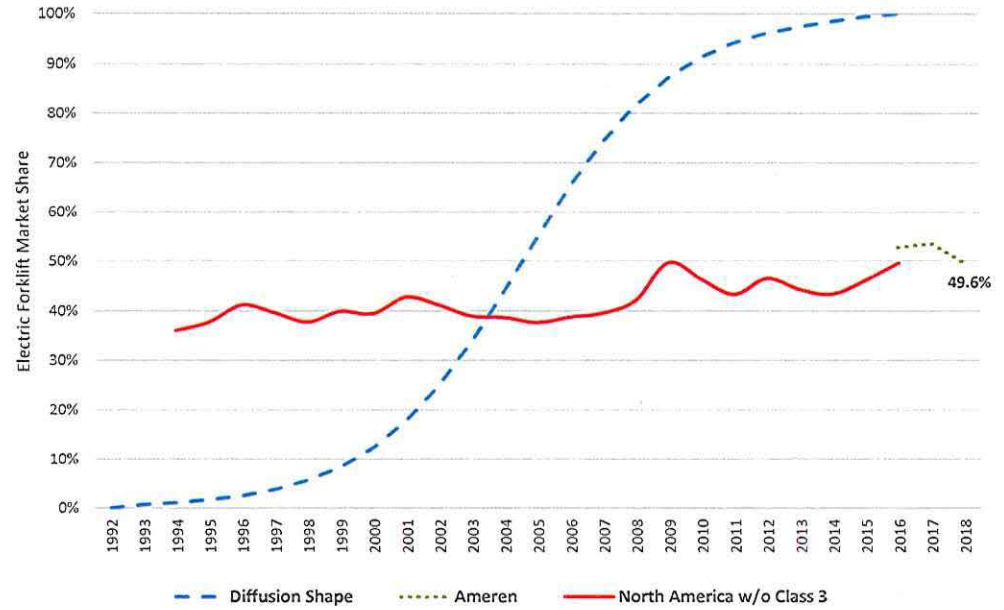


		Diffusion Shape	Ameren	North America w/o Class 3
1	1992	0%		
2	1993	1%		
3	1994	1%		36%
4	1995	2%		38%
5	1996	2%		41%
6	1997	4%		40%
7	1998	6%		38%
8	1999	8%		40%
9	2000	12%		39%
10	2001	18%		43%
11	2002	25%		41%
12	2003	34%		39%
13	2004	44%		39%
14	2005	55%		38%
15	2006	65%		39%
16	2007	74%		40%
17	2008	81%		42%
18	2009	87%		50%
19	2010	91%		46%
20	2011	94%		43%
21	2012	96%		46%
22	2013	97%		44%
23	2014	99%		43%
24	2015	99.4%		46%
25	2016	100.0%	52.8%	50%
	2017		53.6%	
	2018		49.6%	



Ameren Exhibit No. 12
 Date 12-4-18 Reporter TU
 File No. ET-2018-0132

YEAR	ELECTRIC RIDER 电动叉车 (Classes 1 & 2) 第1-2类	MOTORIZED HAND 电动步行式 (Class 3) 第3类	INTERNAL COMBUSTION ENGINE (Classes 4 & 5) 内燃叉车 第4-5类
1994	36,747	34,127	65,027
1995	44,087	37,746	72,685
1996	42,263	35,375	60,287
1997	42,675	38,538	64,946
1998	48,923	40,428	80,554
1999	48,843	41,899	74,994
2000	58,090	49,121	85,993
2001	45,980	37,210	61,507
2002	39,235	36,445	55,928
2003	40,463	38,659	63,365
2004	46,886	44,308	74,228
2005	50,604	46,206	83,725
2006	53,806	50,950	85,038
2007	50,260	48,615	78,064
2008	45,361	43,716	62,104
2009	28,409	28,635	28,740
2010	31,759	36,637	36,896
2011	44,720	42,213	58,483
2012	49,126	47,339	56,618
2013	52,834	52,766	66,473
2014	57,543	52,396	75,040
2015	65,042	57,329	76,075
2016	70,242	65,764	71,455

	Class 1&2	Class 4&5	total	Elec Share No 3s	Class 3	Class 1,2,3	Elec Share w/3s
1994	36,747	65,027	101,774	36%	34,127	70,874	52%
1995	44,087	72,685	116,772	38%	37,746	81,833	53%
1996	42,263	60,287	102,550	41%	35,375	77,638	56%
1997	42,675	64,946	107,621	40%	38,538	81,213	56%
1998	48,923	80,554	129,477	38%	40,428	89,351	53%
1999	48,843	74,994	124,837	40%	41,899	91,742	55%
2000	58,090	85,993	142,083	39%	49,121	105,211	55%
2001	45,980	61,507	107,487	43%	37,210	83,190	57%
2002	39,235	55,928	95,163	41%	36,445	75,680	58%
2003	40,463	63,365	103,828	39%	36,659	77,122	55%
2004	46,886	74,228	121,114	39%	44,308	91,194	55%
2005	50,604	83,725	134,329	38%	46,206	96,810	54%
2006	53,806	85,038	138,844	39%	50,950	104,756	55%
2007	50,260	76,664	126,924	40%	48,615	98,875	56%
2008	45,361	62,104	107,465	42%	43,716	89,077	59%
2009	28,409	28,740	57,149	50%	28,635	57,044	66%
2010	31,759	36,896	68,655	46%	36,637	68,396	65%
2011	44,720	58,483	103,203	43%	42,213	86,933	60%
2012	49,126	56,618	105,744	46%	47,339	96,465	63%
2013	52,834	66,473	119,307	44%	52,766	105,600	61%
2014	57,543	75,040	132,583	43%	52,396	109,939	59%
2015	65,042	76,075	141,117	46%	57,329	122,371	62%
2016	70,242	71,455	141,697	50%	65,764	136,006	66%

Source: Industrial Truck Association, US Factory Shipments 来源: 美国工业车辆协会, 美国工厂订单

F

NTG	100%	80%	70%	63%	45.5%
Free Riders	0.0%	20.0%	30.0%	37.0%	54.5%
TRC	2.20	1.76	1.54	1.386	1.001