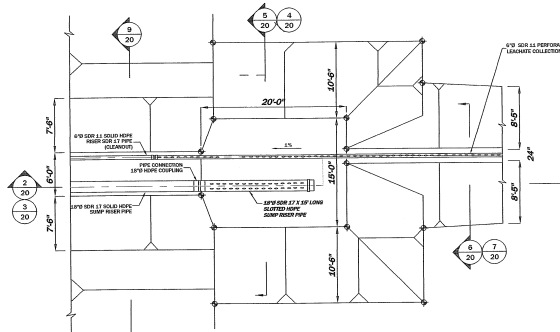
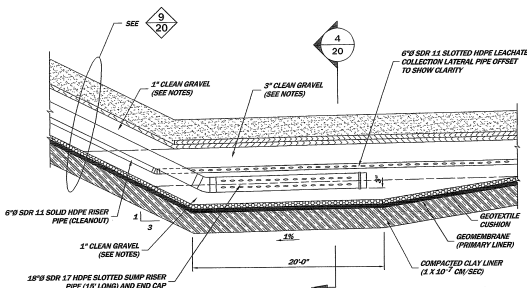


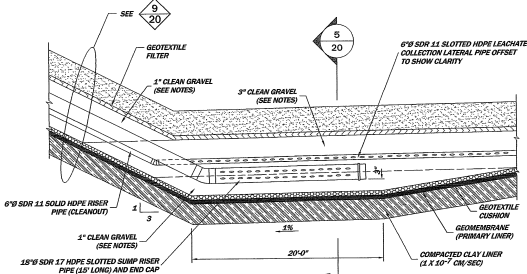
PRINT	REV.	W.D.	SYM.
DEST.			



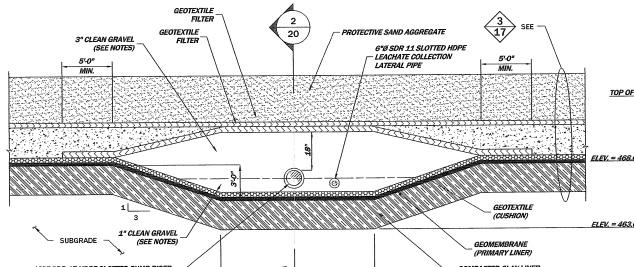
1 PLAN: LEACHATE COLLECTION SUMP (SUBGRADE / TOP OF CLAY)
SCALE: 1" = 8'



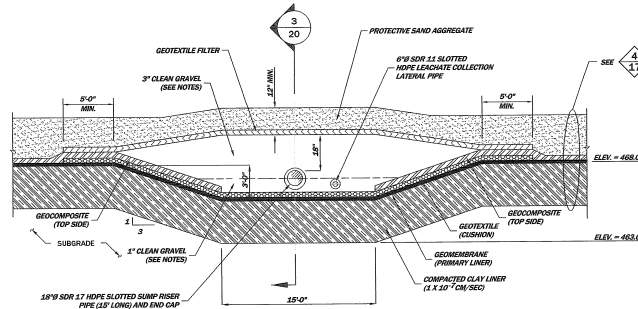
2 LEACHATE COLLECTION SUMP
N.T.S.



3 LEACHATE COLLECTION SUMP ALTERNATE BOTTOM DRAINAGE LAYER
N.T.S.



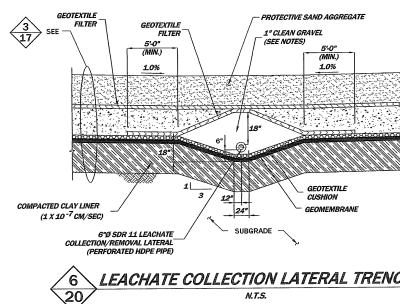
4 LEACHATE COLLECTION SUMP SECTION
N.T.S.



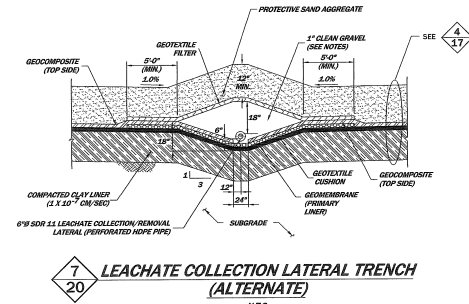
5 LEACHATE COLLECTION SUMP SECTION ALTERNATE BOTTOM DRAINAGE LAYER
N.T.S.

NOTES:

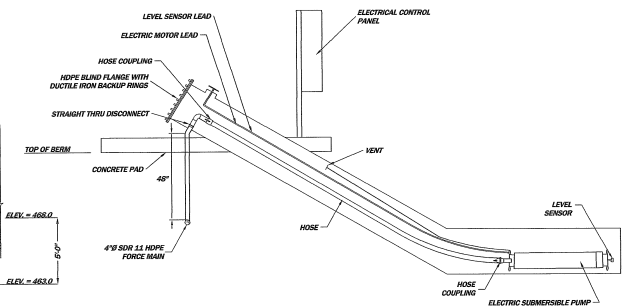
1. NON-CARBONATE AGGREGATE DRAINAGE MATERIAL SHALL HAVE A MINIMUM PERMEABILITY OF 0.25 CM/SEC. AND A PARTICLE SIZE BETWEEN 0.425 mm AND 3.0 mm.
2. GEOCOMPOSITE SHALL HAVE A MINIMUM TRANSMISSIVITY OF 10 CM/SEC PER MANUFACTURER PRODUCT DATA SHEET.
3. SUMP GRAVEL WILL BE 1-INCH CLEAN UP TO SPRINGLINE OF SUMP PIPE AND CLEAN 3-INCH NOMINAL SIZE NON-CARBONATE GRAVEL OR EQUIVALENT ABOVE SPRINGLINE.
4. 12-INCH PROTECTIVE SAND AGGREGATE IS PLACED DURING CONSTRUCTION OF LINER AND LEACHATE COLLECTION SYSTEM.
5. PROTECTIVE SAND AGGREGATE SHALL CONSIST OF A WELL-GRADED NON-CARBONATE AGGREGATE WITH A PARTICLE SIZE BETWEEN 0.5 mm AND 0.075 mm, WITH 0 TO 10% PASSING THE NO. 100 U.S. SIEVE, A 150 PARTICLE SIZE BETWEEN 0.5 AND 0.9 mm, AND A 450 PARTICLE SIZE BETWEEN 0.2 AND 0.4 mm.
6. COLLECTION TRENCH GRAVEL WILL BE CLEAN 1-INCH NOMINAL SIZE NON-CARBONATE GRAVEL OR EQUIVALENT.



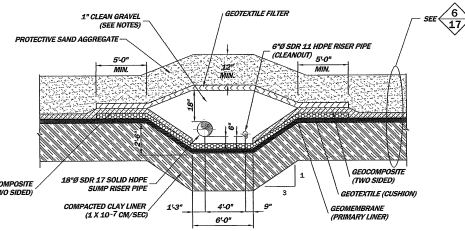
6 LEACHATE COLLECTION LATERAL TRENCH
N.T.S.



7 LEACHATE COLLECTION LATERAL TRENCH (ALTERNATE)
N.T.S.



8 TYPICAL LEACHATE PUMP STATION WITH LEACHATE FORCE MAIN
N.T.S.



1. PERPENDICULAR TO SLOPE.
2. EXTEND GEOTEXTILE A MINIMUM OF 9' FROM TOP SLOPE OF TRENCH.

9 SECTION: SUMP RISER TRENCH
N.T.S.

THE ENGINEER WHOSE SIGNATURE AND PERSONAL SEAL APPEAR HEREON ASSUMES RESPONSIBILITY ONLY FOR WHAT APPEARS ON THIS PAGE AND DISCLAIMS PURSUANT TO SECTION 507.411, REBORN ANY RESPONSIBILITY FOR ALL OTHER PAGES, SPECIFICATIONS, ESTIMATES, REPORTS OR OTHER DOCUMENTS OR INSTRUMENTS NOT SEALED BY THE UNDERSIGNED ENGINEER RELATING TO OR INTENDED TO BE USED FOR ANY PART OR PARTS OF THE PROJECT TO WHICH THIS PAGE RELATES.		REITZ & JENS, INC. REGISTERED PROFESSIONAL ENGINEER 1500 CHATELAIN SQUARE, SUITE 200 ST. LOUIS, MISSOURI 63103 314.466.4332 (office) 314.466.6177 (fax)		GREDELL Engineering Resources, Inc. ENVIRONMENTAL, GEOTECHNICAL 11111 W. 11TH AVENUE, SUITE 100 ST. LOUIS, MISSOURI 63141 314.466.4332 (office) 314.466.6177 (fax)	
PREPARED FOR LABADIE ENERGY CENTER		SHEET 20 PROPOSED UTILITY WASTE LANDFILL LEACHATE COLLECTION SYSTEM DETAILS		CLASS 02010	
APPROVED THOMAS D. JENSEN 04-21137		LOCATION 001009		ST. LOUIS, MISSOURI JANUARY 2013	

PERMIT DRAWINGS - NOT FOR CONSTRUCTION