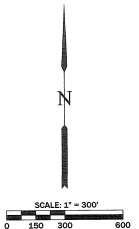
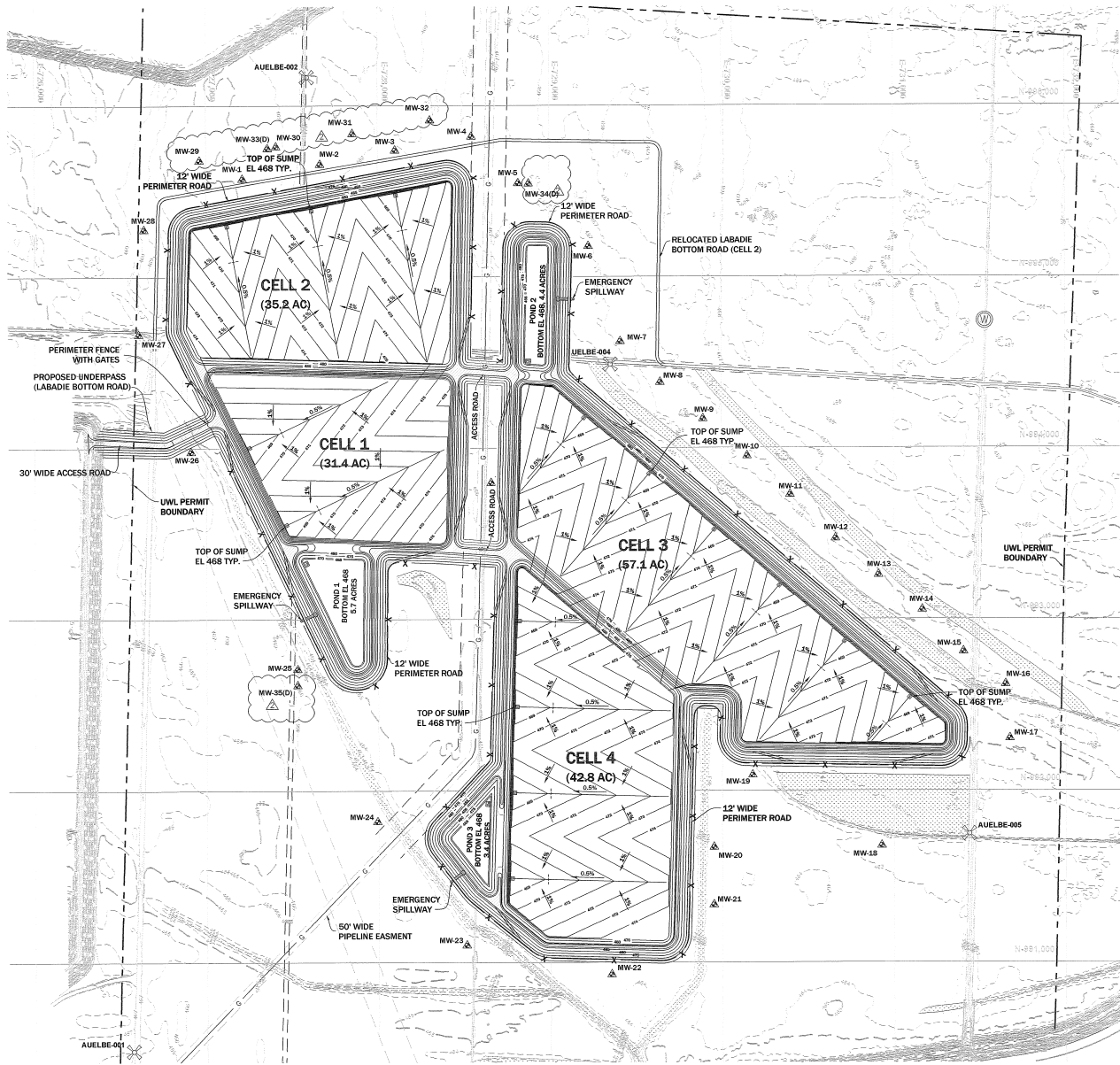


REVISIONS			
REV.	W.O.	SYM.	
1			
06/20/13 ADD NOTES			
REV.	W.O.	SYM.	
2			
11/21/13 ADD MONUMENTS WELLS 23 thru 30			



**SURVEY MONUMENTS**

MONUMENT ID	NORTHING	EASTING	ELEVATION
AUELBE-001	990484.82	726569.81	467.19
AUELBE-002	996166.50	727588.30	470.70
AUELBE-003	989921.39	728508.32	467.59
AUELBE-004	994487.78	729353.29	467.02
AUELBE-005	991746.97	731438.29	462.78
AUELBE-006	996729.00	731621.70	467.67

Missouri State Plane Coordinate System Datum:  
Horizontal Datum NAD 1983;  
Vertical Datum NAVD 1988

- NOTES:**
- CELLS 1 & 2 AREAS WERE MEASURED TO INSIDE TOP OF EXTERIOR BERMS AND OUTSIDE TOP OF INTERIOR BERMS.
  - CELLS 3 & 4 AREAS WERE MEASURED TO INSIDE TOP OF EXTERIOR BERMS AND INSIDE TOP OF INTERIOR BERMS.
  - POND AREAS WERE MEASURED FROM THE INSIDE TOP OF BERM.
  - FABRIC-FORMED FILTER POINT CONCRETE MAT (FCM) ON NONMOVING GEOTEXTILE FILTER TO BE PLACED ON THE OUTSIDE FACE OF ALL EXTERIOR BERMS.
  - ALL LAND DISTURBANCE ACTIVITIES WILL HAVE A 25' MINIMUM SETBACK FROM JURISDICTIONAL WETLANDS WITH A STORMWATER BMP INSTALLED BETWEEN THE DISTURBANCE AND THE WETLAND DURING CONSTRUCTION. SEE DETAIL 4 ON SHEET 13.

**NOTES TO THE CONTRACTOR:**

UNDERGROUND FACILITIES, STRUCTURES, AND UTILITIES HAVE BEEN PLOTTED FROM AVAILABLE SURVEYS AND RECORDS AND THEREFORE, THEIR LOCATIONS MUST BE CONSIDERED APPROXIMATE ONLY. THERE MAY BE OTHERS, THE EXISTENCE OF WHICH IS AT PRESENT NOT KNOWN. VERIFICATION OF THE LOCATIONS OF UNDERGROUND UTILITIES, SHOWN OR NOT SHOWN, WILL BE THE RESPONSIBILITY OF THE CONSTRUCTION CONTRACTOR.

THE CONTRACTOR SHALL MAKE SUITABLE AND TIMELY REQUESTS TO ALL UTILITY OWNERS, PIPELINE OWNERS, OR OTHER PARTIES APPLICABLE TO HAVE ALL NECESSARY AGREEMENTS OF PUBLIC OR PRIVATE UTILITIES, PIPE LINES, OR OTHER APPROPRIATE AGENCIES WITHIN OR ADJACENT TO THE LIMITS OF CONSTRUCTION, AS SOON AS PRACTICAL OR POSSIBLE.

MISSOURI ONE CALL SYSTEM (DIG-RITE) 1-800-344-7483

CALL BEFORE YOU DIG - DRILL - BLAST (TOLL FREE)  
MISSOURI ONE CALL SYSTEM, INC.

**PERMIT DRAWINGS NOT FOR CONSTRUCTION**

THE ENGINEER WHOSE SIGNATURE AND PERSONAL SEAL APPEAR HEREON ASSUMES RESPONSIBILITY ONLY FOR WHAT APPEARS ON THIS PAGE AND DISCLAIMS LIABILITY FOR WHAT APPEARS ON THIS PAGE AND DISCLOSES PURSUANT TO SECTION 327.411 RSMO. THE ENGINEER'S LIABILITY FOR ALL OTHER PLANS, SPECIFICATIONS, ESTIMATES, REPORTS OR OTHER DOCUMENTS OR INSTRUMENTS NOT SEALED BY THIS ENGINEER ENGINEER RELATING TO OR INTENDED TO BE USED FOR ANY PART OR PARTS OF THE PROJECT TO WHICH THIS PAGE REFERS.

**RETZ & TENS, INC.**  
314.993.4332 (PHONE) 314.993.4377 (FAX)  
1000 N. WENTZ ROAD, SUITE 100, ST. LOUIS, MISSOURI 63107  
ENVIRONMENTAL ENGINEERING

Professional Engineer Seal for **WILLIAM R. GIBBINS**, No. 001107, State of Missouri, Mechanical Engineering.

**PERMITTED FOR** **Ameron**

SHEET 5  
PROPOSED UTILITY WASTE LANDFILL  
OVERALL BOTTOM GRADING PLAN (TOP OF LINER)

LOCATION 001009 **LABADIE ENERGY CENTER** CLASS 02010  
ST. LOUIS, MISSOURI  
JANUARY 2013  
REV 0