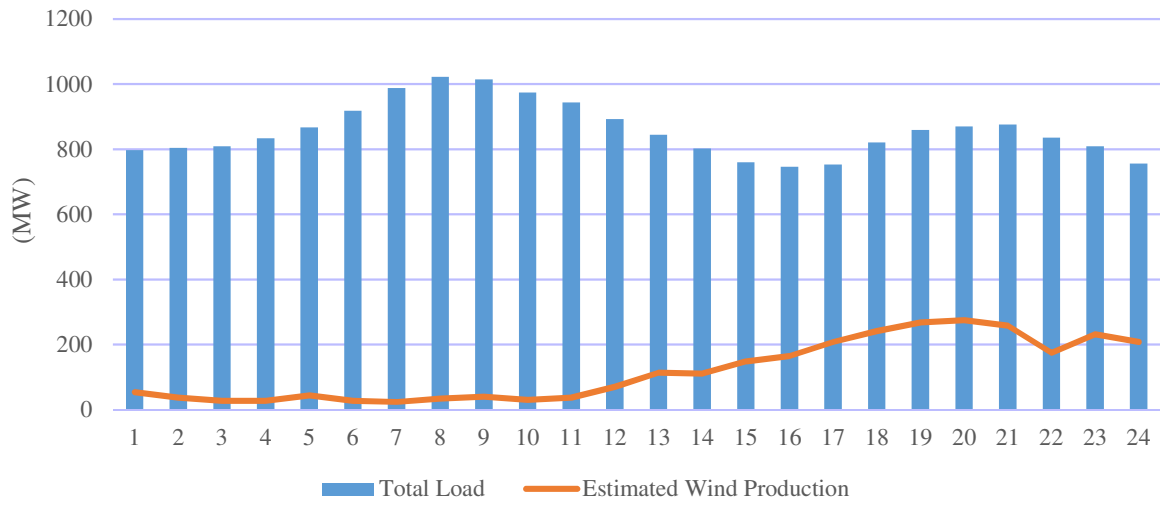
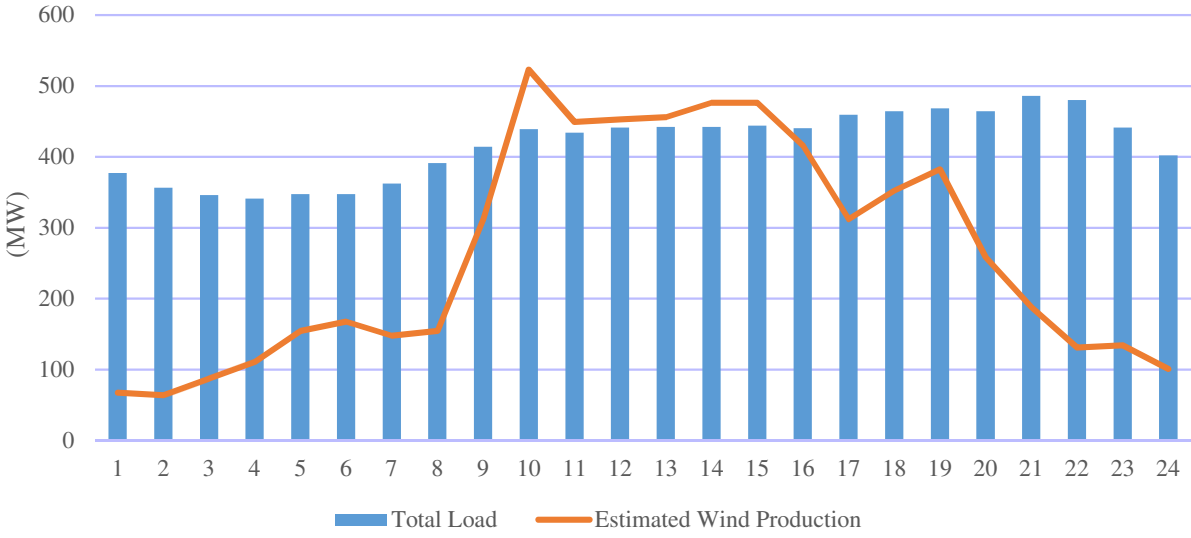


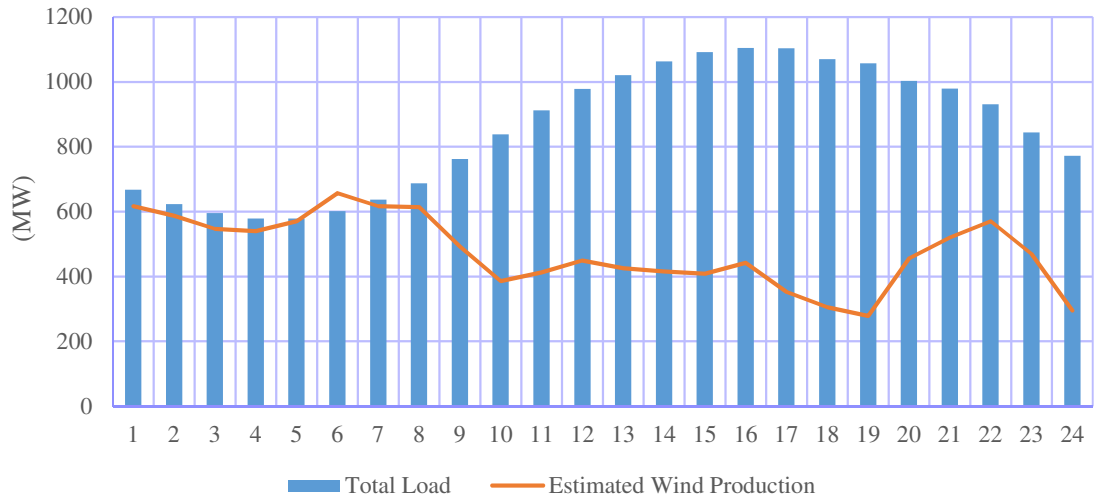
Total Load vs. Estimated 855 MW Wind Production 01/18/2016 Winter Peak



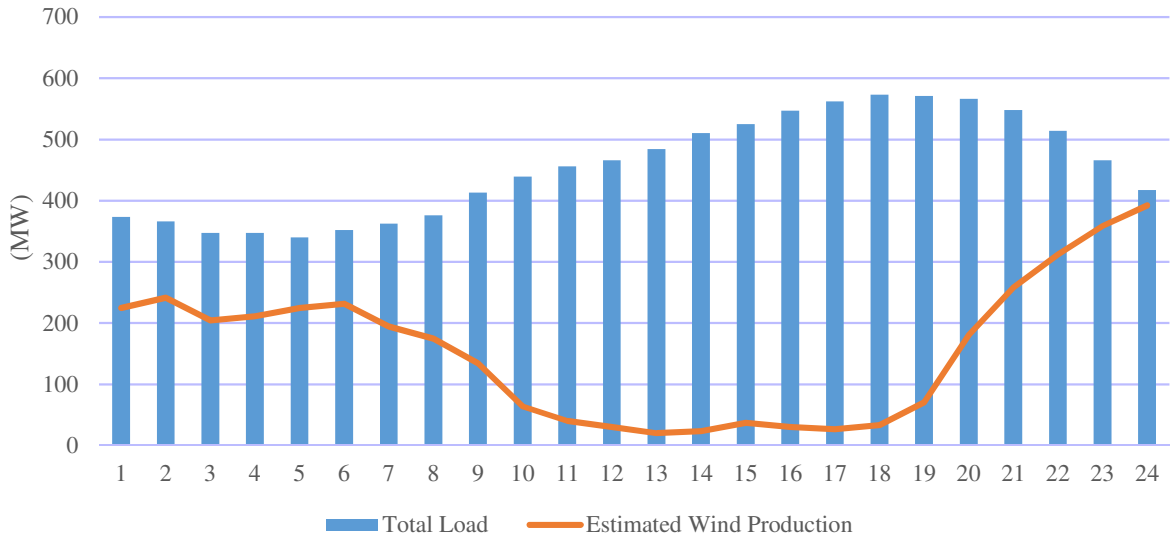
Total Load vs. Estimated 855 MW Wind Production 05/01/2016 Spring Minimum



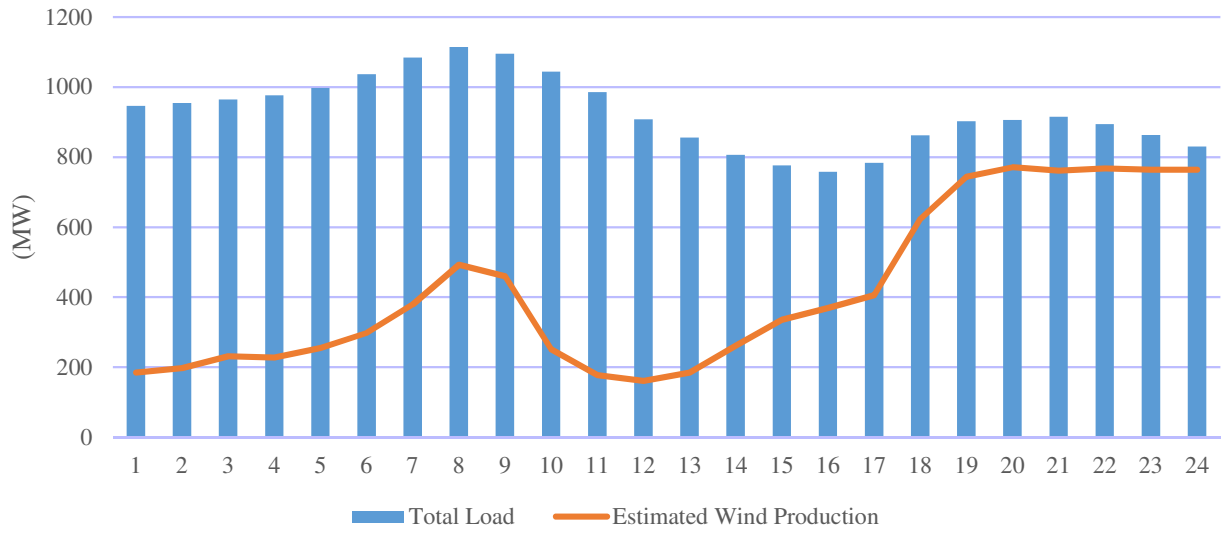
Total Load vs. Estimated 855 MW Wind Production 08/11/2016 Summer Peak



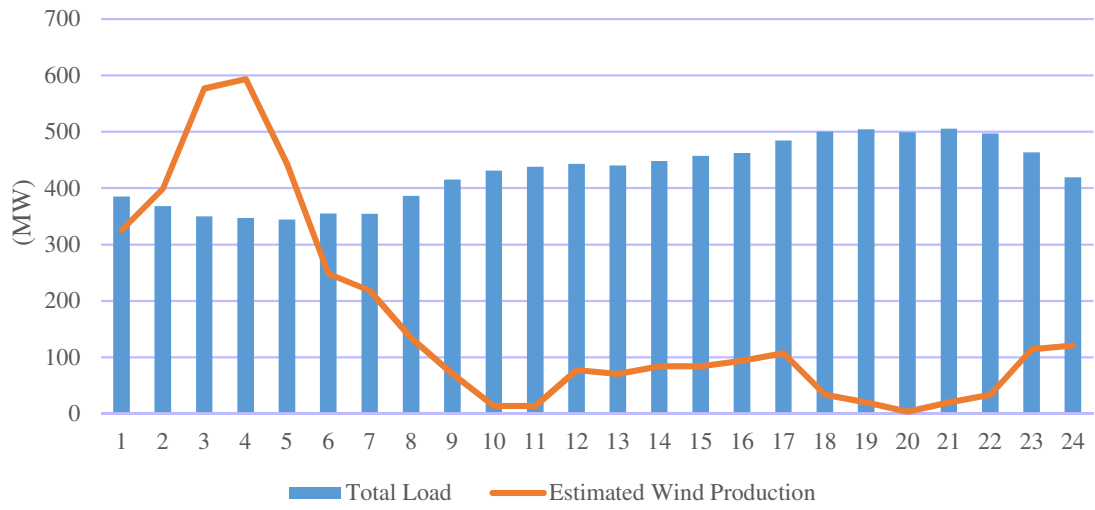
Total Load vs. Estimated 855 MW Wind Production 10/02/2016 Fall Minimum



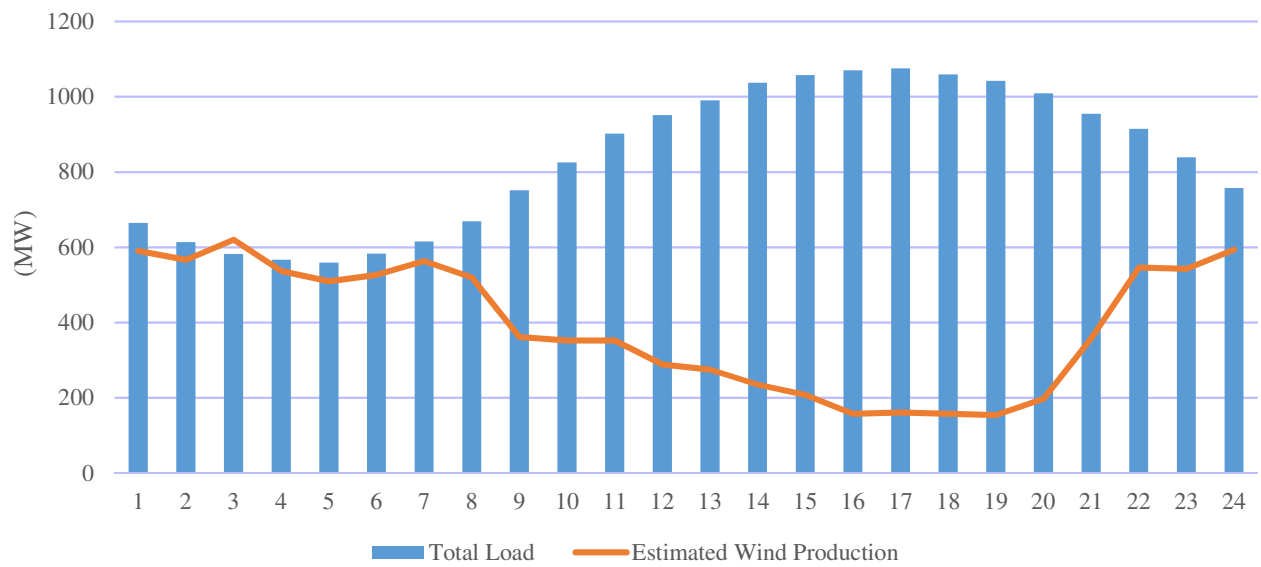
Total Load vs. Estimated 855 MW Wind Production 12/19/2016 Winter Peak



Total Load vs. Estimated 855 MW Wind Production 05/21/2017 Spring Minimum



Total Load vs. Estimated 855 MW Wind Production
07/20/2017 Summer Peak



Total Load vs. Estimated 855 MW Wind Production 10/22/2017 Fall Minimum

