

Missouri Public Service Commission

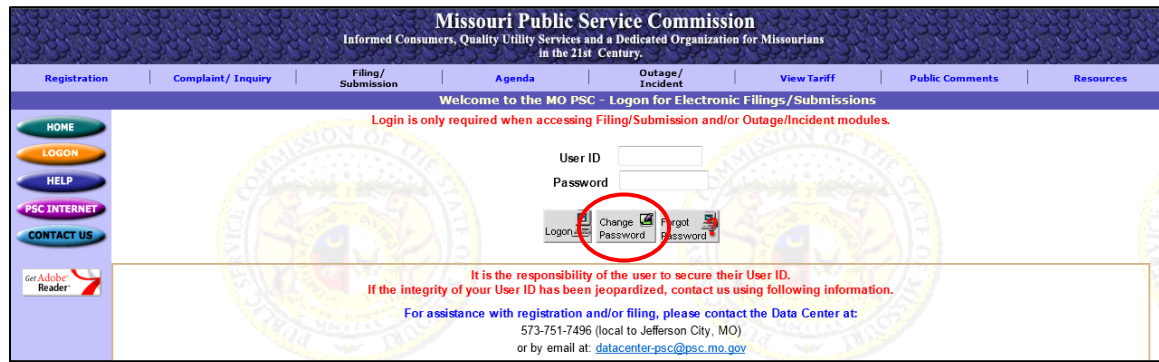
EFIS – Change EFIS Password

To change your EFIS password:

1. From any EFIS screen, click the orange 'Logon' icon on the left side of the screen to open the *EFIS Logon* screen.



2. From the *EFIS Logon* screen, click the 'Change Password' button to open the *Change Password* screen.



Missouri Public Service Commission

EFIS – Change EFIS Password

On the *Change Password* screen, complete the following steps:

3. In the '**User ID**' field, input your user ID.
4. In the '**Old Password**' field, input your current password.
5. In the '**New Password**' field, input your new password.
6. In the '**Confirm New Password**' field, re-input your new password.
7. Click the '**Submit**' button.

Missouri Public Service Commission
Informed Consumers, Quality Utility Services and a Dedicated Organization for Missourians
in the 21st Century.

Registration | Complaint/ Inquiry | Filing/ Submission | Agenda | Outage/ Incident | View Tariff | Public Comments | Resources

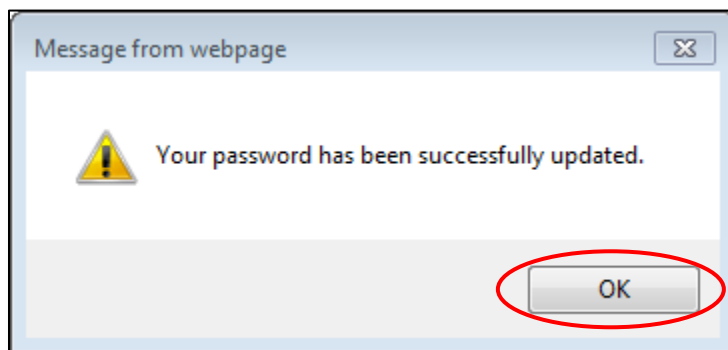
Change Password

* User ID
* Old Password
* New Password
* Confirm New Password

Your account password must be 8-14 characters in length, must have alpha and numeric values (at least one letter and at least one number) and special characters are not allowed (e.g., !@#%&* _ + = {} | : ; " ' < > , . ? / -). Account passwords are case sensitive.

Submit

8. A confirmation message that your password has been updated successfully will be displayed on the screen.
9. Click the '**OK**' button to continue using EFIS.



For additional assistance, please contact the Data Center at 573-751-7496 or dcsupport@psc.mo.gov.