

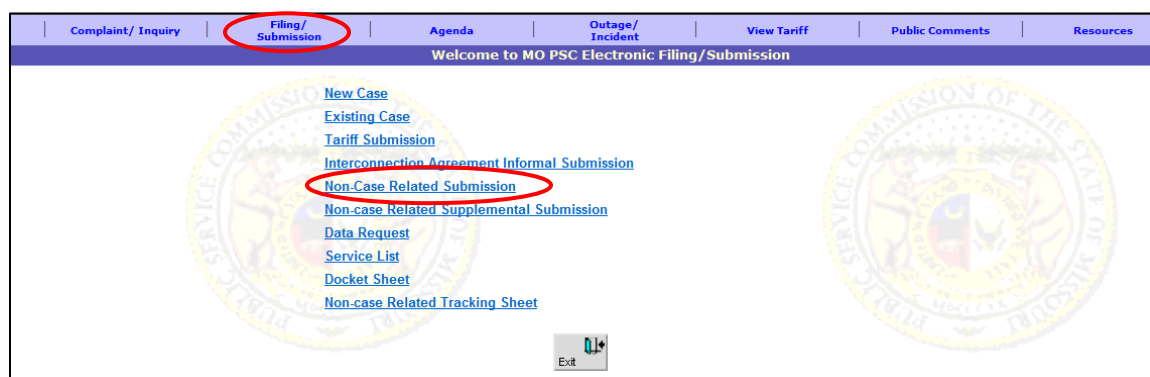
# Missouri Public Service Commission

## EFIS – *Submit Statement of Revenue Report*

---

To file a Statement of Revenue Report:

1. Log on to EFIS.
2. From the Welcome screen, click the **'Filing/Submission'** menu option
3. Select the **'Non-Case Related Submission'** link to continue to the *Non-Case Related Submission* screen.




On the *Non-Case Related Submission* screen, complete the following steps:

4. In the **'Type of Utility'** drop-down list, select the applicable utility type.
  - *Select the utility type for which the Company is certificated/registered. **Separate submissions are required if a Company has multiple certifications/registrations** (e.g., Water and Sewer; CLEC and IXC; and etc.)*
5. In the **'Company'** drop-down list, select the applicable company.
  - *This list will only list those companies for which the user has been designated as a contact for. If the company is not listed, contact the company's Official Representative and ask them to add the user as a contact; or notify the Data Center.*
6. In the **'Type of Submission'** field, select 'Statement Of Revenue'.
7. In the **'Gross Intrastate Operating Revenue'** field, input the appropriate revenue amount.
  - *Click on the link below the field for additional guidance with this field.)*
8. In the **'Report for Calendar Year'** field, input the appropriate annual report reporting year.
9. In the **'Applicable Case Number'** field, input the applicable case number if the submission is related to an existing case. If not, leave blank.
10. In the **'Date Filed'** field, do not change the date as it defaults to the current date.
11. In the **'Comments'** field, input any comments, if desired.
12. Click the **'Continue'** button to continue to the *Filing/Submission – Attachment(s)* screen.

# Missouri Public Service Commission

## EFIS – Submit Statement of Revenue Report

**Non-Case Related Submission**

 **SESSION TIMEOUT WARNING:** Please be advised that when logged into EFIS, your EFIS session will time out (expire) after 20 minutes of inactivity. If your session times out, you will be returned to the logon screen (even if you were able to continue typing text or making entries on the screen). In addition, any data or attachments awaiting submission will be lost.

**\* Required Fields**

**\* Type of Utility**

**\* Company**

**\* Type of Submission**

**\* Gross Intrastate Operating Revenue**   
[Click here for information to enter in this field.](#)

**\* Report For Calendar Year**

**Applicable Case No.**

**Date Filed**

**Comments**   
(Allows only 250 characters)

| SI.No. | Attachment(s)   | Security Level |
|--------|---|----------------|
|        | <input type="button" value="➔"/> <input type="button" value="📁"/> |                |

On the *Filing/Submission – Attachment(s)* screen, complete the following steps:

13. Click the **'Choose File'** button to upload documents.
  - *File names and file paths cannot contain special characters (%'&^\*#@) except an underscore or hyphen.*
  - *Attachments must be less than 20MB.*
  - *Password protected documents are not acceptable.*
  - *Maximum of 50 attachments per submission.*
  - *PDF documents are preferred.*
  - *Zip files are not permitted.*
14. Select the appropriate document security option using the radio buttons. If deemed highly confidential, check the box **'Check here to designate...'** to select the **'Highly Confidential'** radio button option.
  - *It is the filer's responsibility to denote the correct security level for each attachment.*
  - *The 'Highly Confidential' option will only appear if a case number has been entered on the previous screen.*
15. Click the **'Attach'** button to upload the document.
  - *Multiple attachments can be made by selecting a document; selecting the security level; and then clicking the 'Attach' button.*

# Missouri Public Service Commission

## EFIS – Submit Statement of Revenue Report

**Filing/Submission - Attachment(s)**

**SESSION TIMEOUT WARNING:** Please be advised that when logged into EFIS, your EFIS session **will** time out (expire) after 20 minutes of inactivity. If your session times out, you will be returned to the logon screen (even if you were able to continue typing text or making entries on the screen). In addition, any data or attachments awaiting submission will be lost.

**DISCLAIMER AND INSTRUCTIONS:** It is the sole responsibility of the person or entity submitting 'public' versions of electronic files to take appropriate measures to ensure that all 'confidential' information is to the best of his or her knowledge, information and belief, non-viewable, non-searchable and non-reversible. Informal consumer complaints and accompanying attachments are automatically designated confidential. For case documents, when submitting 'confidential' information, a **cover sheet or pleading** describing why that information qualifies for 'confidential treatment' must be included.

**Attachment Process:**

1. Click 'Browse' to select the attachment from its saved location.
2. Select the security designation for the attachment.
3. Click the 'Attach' button. (To upload multiple attachments, repeat steps 1 through 3.)
4. After all attachments for the submission have been uploaded, click the 'Done With Attach' button.

**Note:**

- Attachment file names and file paths cannot contain special characters.
- Each attachment must be less than 20MB. Attachments that are 20MB or greater must be divided into multiple parts.
- Password protected documents are not acceptable.
- Maximum of 50 attachments per submission. Multiple submissions are required for filings containing greater than 50 attachments.

Choose File | test document 1.pdf

**Select Document Security from the following:**

Public  Confidential

Check here to designate a document as 'Highly Confidential'. Documents may only be designated as 'Highly Confidential' if a Motion for Protective Order has been filed.

Attach Done with Attach Delete

16. Click the **'Done with Attach'** button after all the attachments have been uploaded.

**Note:**

- Attachment file names and file paths cannot contain special characters.
- Each attachment must be less than 20MB. Attachments that are 20MB or greater must be divided into multiple parts.
- Password protected documents are not acceptable.
- Maximum of 50 attachments per submission. Multiple submissions are required for filings containing greater than 50 attachments.

Choose File | No file chosen

*To remove an item from the 'Attachment' list, click the 'Delete' checkbox and then click the 'Delete' button below.*

ial. Documents may only be designated as

*The 'Attachment' list shows the 'Security Level' selected for each document.*

| Delete                   | Attachments         | Security Level |
|--------------------------|---------------------|----------------|
| <input type="checkbox"/> | test document 1.pdf | Public         |

Attach Done with Attach Delete

17. Verify that the security level of the attachment(s) is correct by clicking the **'OK'** button. (If it's not correct, click 'Cancel' to make corrections.)

Message from webpage

Have you verified the documents attached are properly identified as 'Public', 'Confidential', or 'Highly Confidential' documents?

OK Cancel

# Missouri Public Service Commission

## EFIS – Submit Statement of Revenue Report

On the *Non-Case Related Submission* screen, scroll down to the bottom of the screen to proceed.

18. To finalize the submission, click the **'Submit'** button.

**Non-Case Related Submission**

**SESSION TIMEOUT WARNING:** Please be advised that when logged into EFIS, your EFIS session will time out (expire) after 20 minutes of inactivity. If your session times out, you will be returned to the logon screen (even if you were able to continue typing text or making entries on the screen). In addition, any data or attachments awaiting submission will be lost.

**\* Required Fields**

\* Type of Utility: Electric

\* Company: Electric Missouri, Inc-Investor(Electric)

\* Type of Submission: Statement Of Revenue

\* Gross Intrastate Operating Revenue: 999,999.00  
[Click here for information to enter in this field.](#)

\* Report For Calendar Year: 2016

Applicable Case No.:

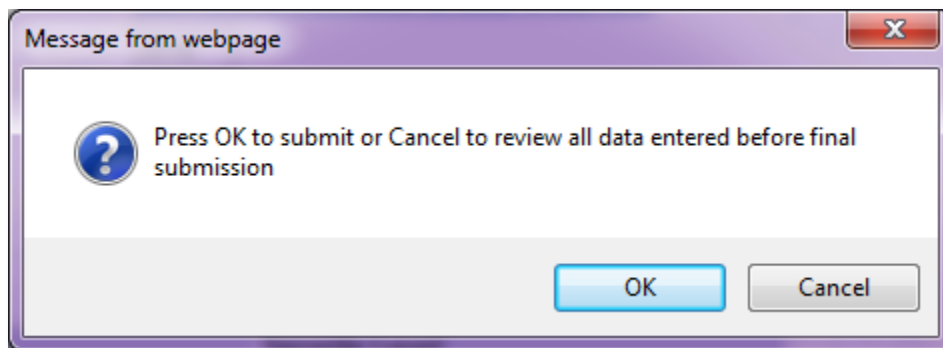
Date Filed: 7/27/2016

Comments: Statement of Revenue  
(Allows only 250 characters)

| Sl.No. | Attachment(s)                | Security Level      |
|--------|------------------------------|---------------------|
| 1.     | <a href="#">test_doc.pdf</a> | Highly Confidential |

Submit Attach Exit

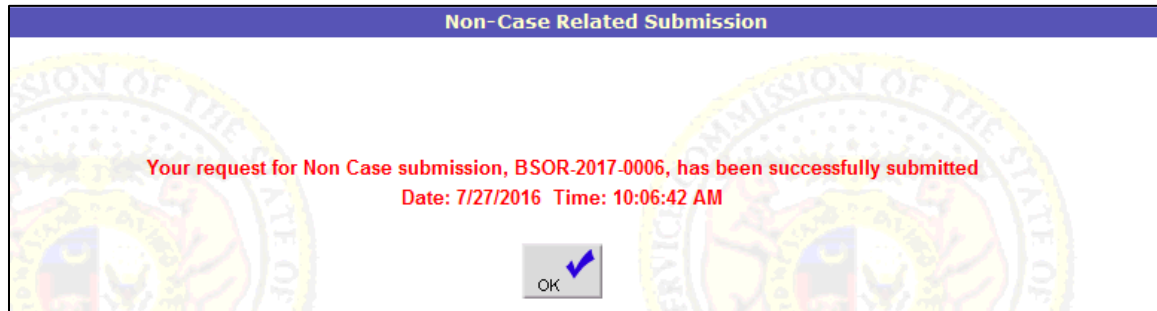
19. Click the **'OK'** button to submit the filing, or click the **'Cancel'** button to make changes to the submission.



## Missouri Public Service Commission EFIS – *Submit Statement of Revenue Report*

---

20. A submission confirmation message will appear on the screen.
21. Click the **OK** button to return to the *Filing/Submission* screen.



**NOTE:** *If the user is asked to provide additional information or need to file amended information, please submit that information as a 'Non-Case Related Supplemental Submission' in EFIS using the tracking number from the original Statement of Revenue submission for that reporting year. Refer to the EFIS 'HELP' topic 'Submit Supplemental Statement of Revenue Report'.*

*For additional assistance, please contact the Data Center at 573-751-7496 or [dcsupport@psc.mo.gov](mailto:dcsupport@psc.mo.gov).*